





# Eastern Washington Sustainable Harvest Calculation Update

July 2, 2024

A Presentation to the Board of Natural Resources

By Glynis Gordon

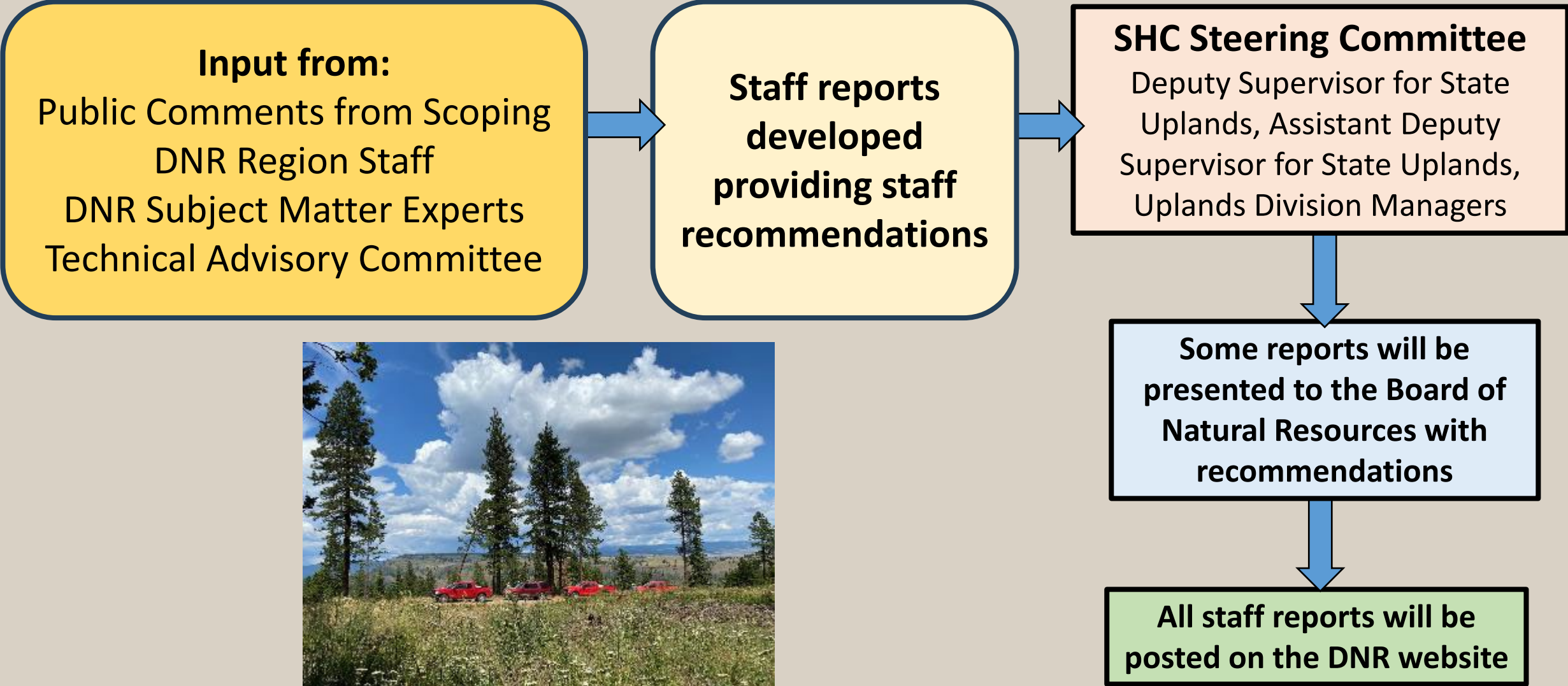


# Agenda

- Sustainable Harvest Calculation decision-making process
- Upcoming Board decision points
- Timeline update



# Decision Making Process for Sustainable Harvest Calculation



## Upcoming Board Decision Points

- Arrearage
- Action Alternatives and No Action Alternative
- Objective function of the model
- Discount Rate
- Which metrics will be used to compare among alternatives
- Sustainable Harvest Units
- Modeling climate change impacts

## Additional Decision Points

- How to translate policies and operations into modeling requirements, including:
  - Silviculture and harvest activities
  - Economic assumptions
  - All policies, plans, and statutes that govern DNR management
  - Forest health and disturbance
  - And others...
- Verification of all models
- Quantifying carbon sequestration and emissions
- Other decisions related to EIS analyses



# September and October Decision Points

## Arrearage



Determine if there is an arrearage since 1996 and analyze options for incorporating arrearage volume harvest into the alternatives

## Sustainable Harvest Units



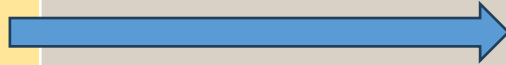
Determine the configuration of the sustainable harvest units

## Objective function of the model



Determine the objective function of the forest estate model

## Action Alternatives and No Action Alternative



Determine which alternatives to examine in the Draft Environmental Impact Statement and how to define the No Action alternative



# November and December Decision Points

## Discount Rate



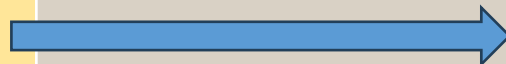
Determine which discount rate will be used in the model

## Metrics used to compare among alternatives



Determine which metrics (financial, ecological, etc.) the Board will want to see in order to compare among alternatives in the DEIS

## Modeling climate change



Determine how climate change impacts will be incorporated into the model



# Arrearage

A shortfall in actual harvest volume compared to the approved sustainable harvest level

Arrearage

Sustainable Harvest  
Units

Objective function of  
the model

Action Alternatives  
and No Action  
Alternative

- RCW 79.10.330: Arrearages—End of decade
- PO 14-024: End of Decade Analysis – Arrearage
  - “The Board will consider the DNR’s arrearage analysis and adopt a course of action to address the decadal arrearage that is in the best interests of the trusts.”





# Sustainable Harvest Units (SHUs)

A geographic area of state trust lands for which a strategic maximum decadal timber harvest level is calculated.

Policy for Sustainable Forests (PSF):

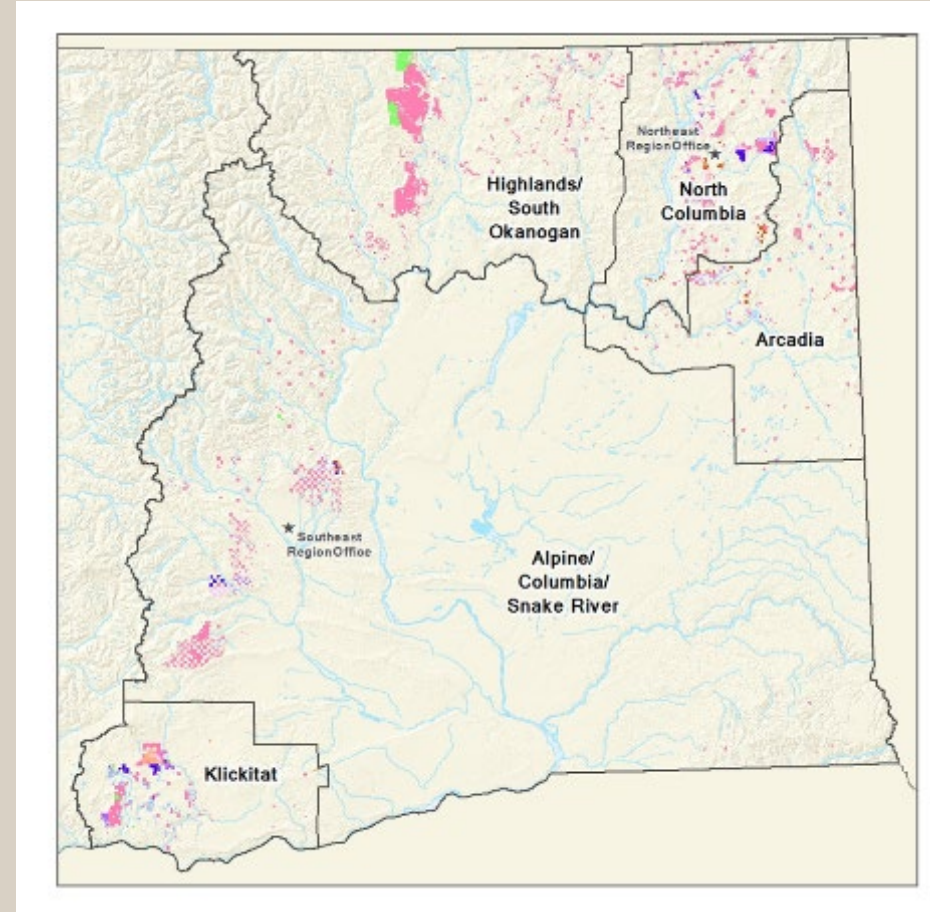
- “The department will calculate, and the Board of Natural Resources will adopt, a separate long-term decadal sustainable harvest level for each of the several distinct sustainable harvest units.”
- “For Eastern Washington, sustainable harvest units will be determined as part of the Eastern Washington sustainable harvest calculation.”

Arrearage

Sustainable Harvest Units

Objective function of the model

Action Alternatives and No Action Alternative



1996 Sustainable Harvest Units

# Objective Function of the Model

What is the model solving for?

Arrearage

Sustainable Harvest  
Units

Objective function  
of the model

Action Alternatives  
and No Action  
Alternative

“The department will analyze the financial characteristics of forest stands in order to **optimize the economic value** of forest stands and timber production over time...”  
- Policy for Sustainable Forests



Board Resolution No. 1591: “Use available inventory data in a multi-objective optimization to explore the implications of incorporating, but not necessarily include, additional objectives into the 2025-2034 SHC or Tactical Plans.”

# Environmental Impact Statement – Alternatives

## Action Alternatives:

- Enable the agency to explore different, feasible ways of achieving the purpose and need of the proposal, and to understand the range of potential environmental impacts
- Inform decision-making

## No Action Alternative:

- Represents current practices and provides a benchmark against which to compare the alternatives

Arrearage

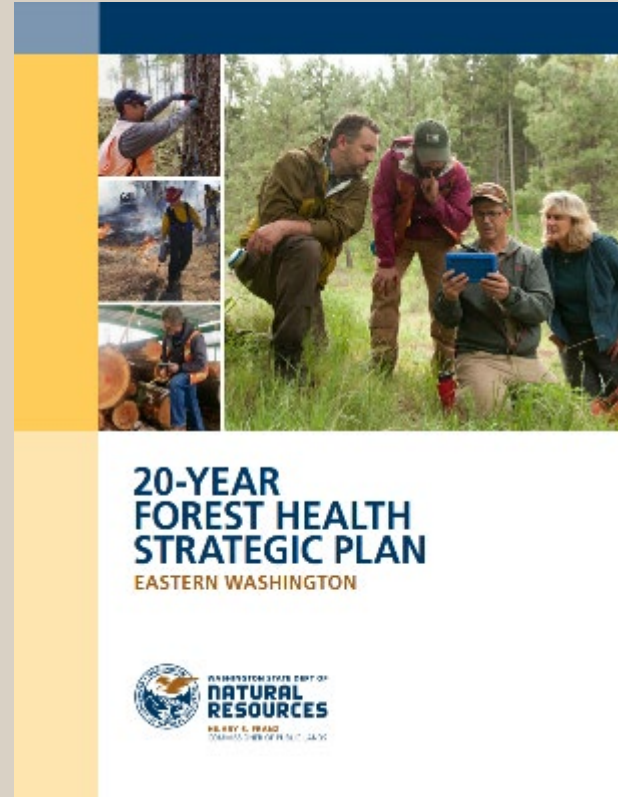
Sustainable Harvest  
Units

Objective function  
of the model

Action Alternatives  
and No Action  
Alternative



# Environmental Impact Statement Action Alternatives



## Phase 1: Project Initiation and EIS (Environmental Impact Statement) Scoping *Completed May 2024*

- Draft project need, purpose, and objectives
- Issue SEPA Determination of Significance and Scoping Notice
- Engage with the public and stakeholders and receive scoping comments
- Complete scoping report
- Finalize project initiation document

## Phase 2: Alternative and Model Development for DEIS (Draft Environmental Impact Statement) *May 2024 - March 2025*

- Continue to engage with the Technical Advisory Committee (TAC)
- Engage with the Board to develop alternative management scenarios (alternatives) to be analyzed through the EIS process
- Finalize growth and yield models
- Finalize forest estate model
- Complete validation contracts for stratified yields and forest estate model

### Phase 3: DEIS (Draft Environmental Impact Statement)

*March 2025 – July 2025*

- Generate final forest estate model outputs (harvest levels) for each alternative
- Analyze the impacts of the alternatives on elements on the environment
- Write the DEIS and conduct internal reviews
- Complete a financial analysis
- Complete an Environmental Justice Assessment
- Publish the DEIS

### Phase 4: FEIS (Final Environmental Impact Statement) and Board Decision

*July 2025 – February 2026*

- Respond to public and stakeholder comments on the DEIS
- Revise the DEIS based on public and Board feedback
- Publish the FEIS
- Finalize the financial analysis and other supporting documents
- Board adopts a harvest level from within the range of alternative harvest levels

# Questions?



