



Lake Merwin 160

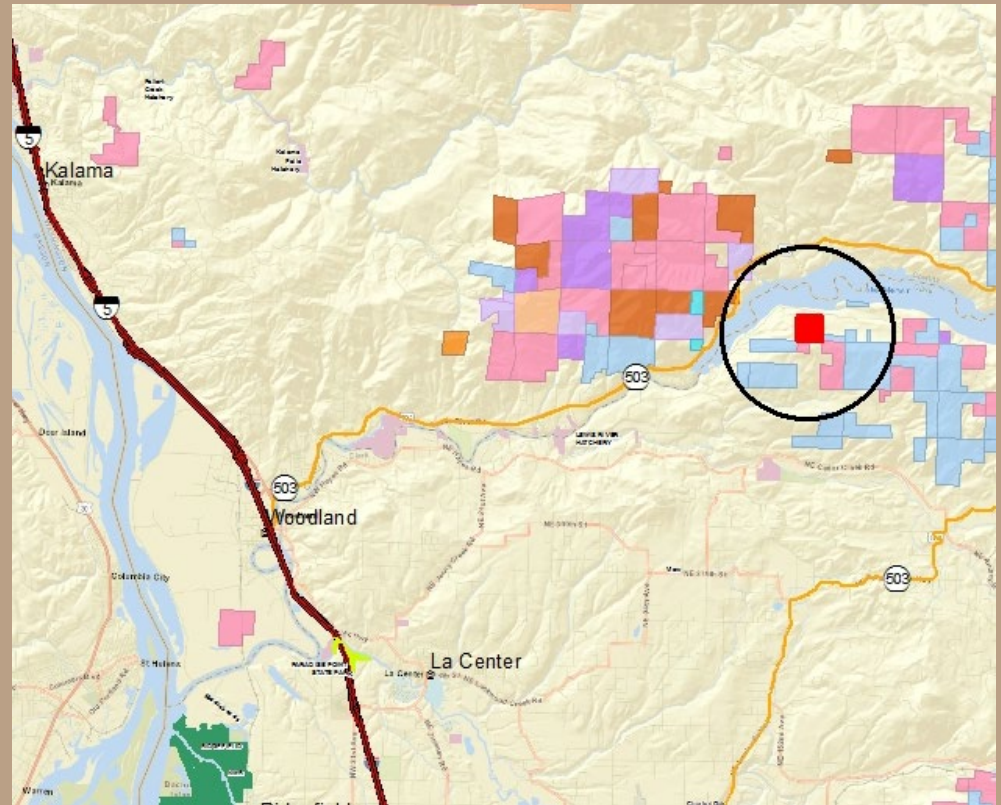
Proposed Common School Purchase Clark County



Lake Merwin 160

Location

- Common School Trust
- Clark County
- Adjacent to other DNR trust lands



Lake Merwin 160



Property

- 160 acres
- Proposed Common School acquisition
- Timber: mix of reprod Douglas fir and Red alder
- Site Class II And III
- Zoned Commercial Forestry



Project Name



Photo taken by Kymm Boire

Purchase Price:

\$600,000

Price per acre = \$3,750 Gross acres



Lake Merwin 160

Benefits

- Adds 160 acres to an existing DNR forest and adds productive forestland to the common school trust in prime timber country
- Retains quality working forests; prevents conversion
- Improves trust revenue potential



Lake Merwin 160

Resolution #1565

Questions?



