



# MMLTCS and SHC

A report to the Board of Natural Resources

*presented by*

Angus Brodie and Andy Hayes

*October 3, 2017*



2017

2018

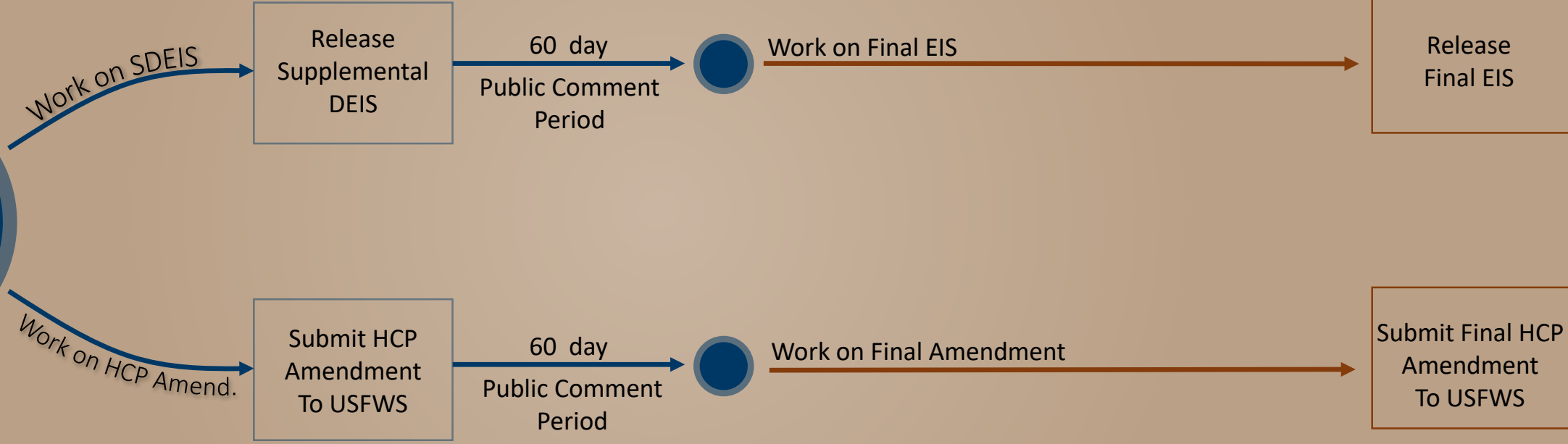
2019

Nov

June

Sep

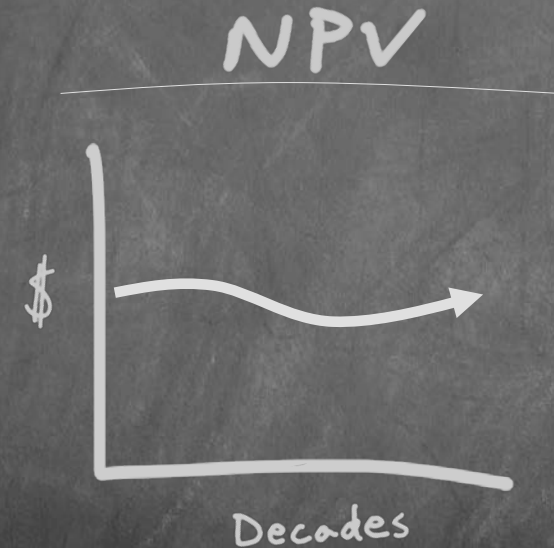
May



# Trust Mandate

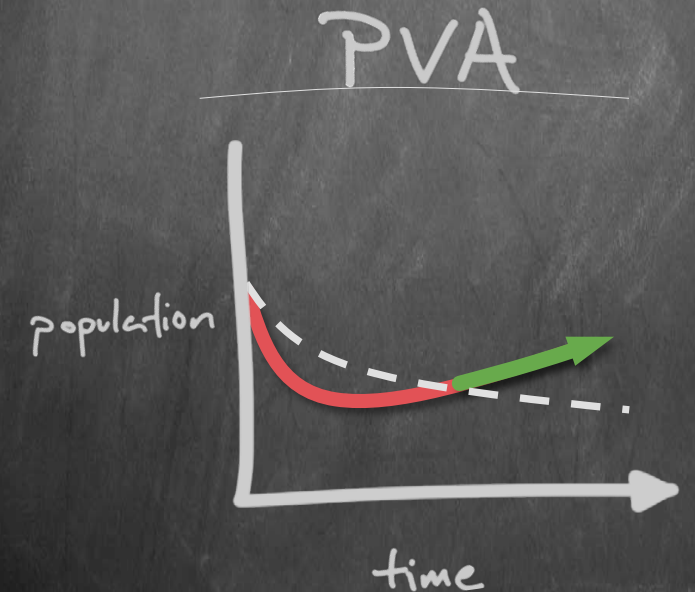
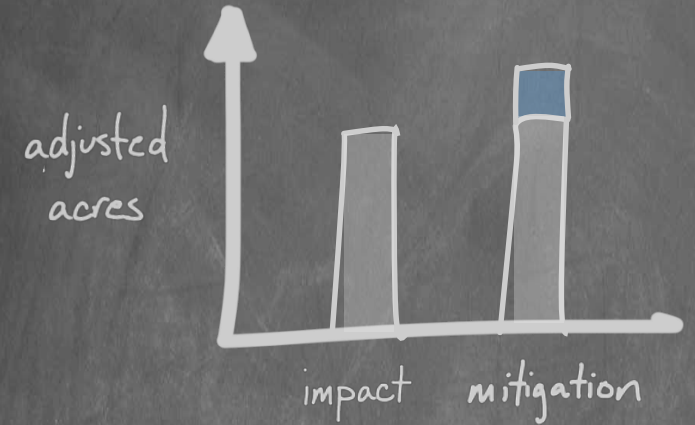
As manager of state trust lands, DNR has legal fiduciary responsibilities under the State Constitution to:

- Generate revenue and other benefits for each trust
  - Preserve the corpus of the trust
  - Exercise reasonable care and skill
- Act prudently to reduce the risk of loss for the trusts
  - Maintain undivided loyalty to beneficiaries
  - Act impartially with respect to current and future beneficiaries



# Evaluation Criteria

- To the maximum extent practicable, minimize and mitigate the impacts of take.
- Not appreciably reduce the likelihood of the survival and recovery of the species in the wild.
- Make a significant contribution to maintaining and protecting marbled murrelet populations in western Washington over the life of the HCP.



# What is the baseline?



# Baseline requirements

- To the maximum extent practicable, minimize and mitigate the impacts of take.
- Not appreciably reduce the likelihood of the survival and recovery of the species in the wild.



# Baseline requirements

- To the maximum extent practicable, minimize and mitigate the impacts of take.
  - Not appreciably reduce the likelihood of the survival and recovery of the species in the wild.
- 

To do this, our HCP, at a minimum, must address these issues:

1. Protect all occupied sites
2. Reduce the risk of degradation over time
3. Provide mitigation through future habitat in strategic locations, to:
  - a) Provide a distribution of interior forest habitat across the range in WA and,
  - b) Bridge gaps in the distribution of habitat around existing occupied sites
4. Minimize the short-term risks to the population



# Staff Recommendation



# Board Input

- ✓ Reduce short-term impacts
- ✓ Provide mitigation for uncertainty (*epsilon*)
- ✓ Concentrate on strategically important locations
- ✓ Ensure no trust is unduly affected

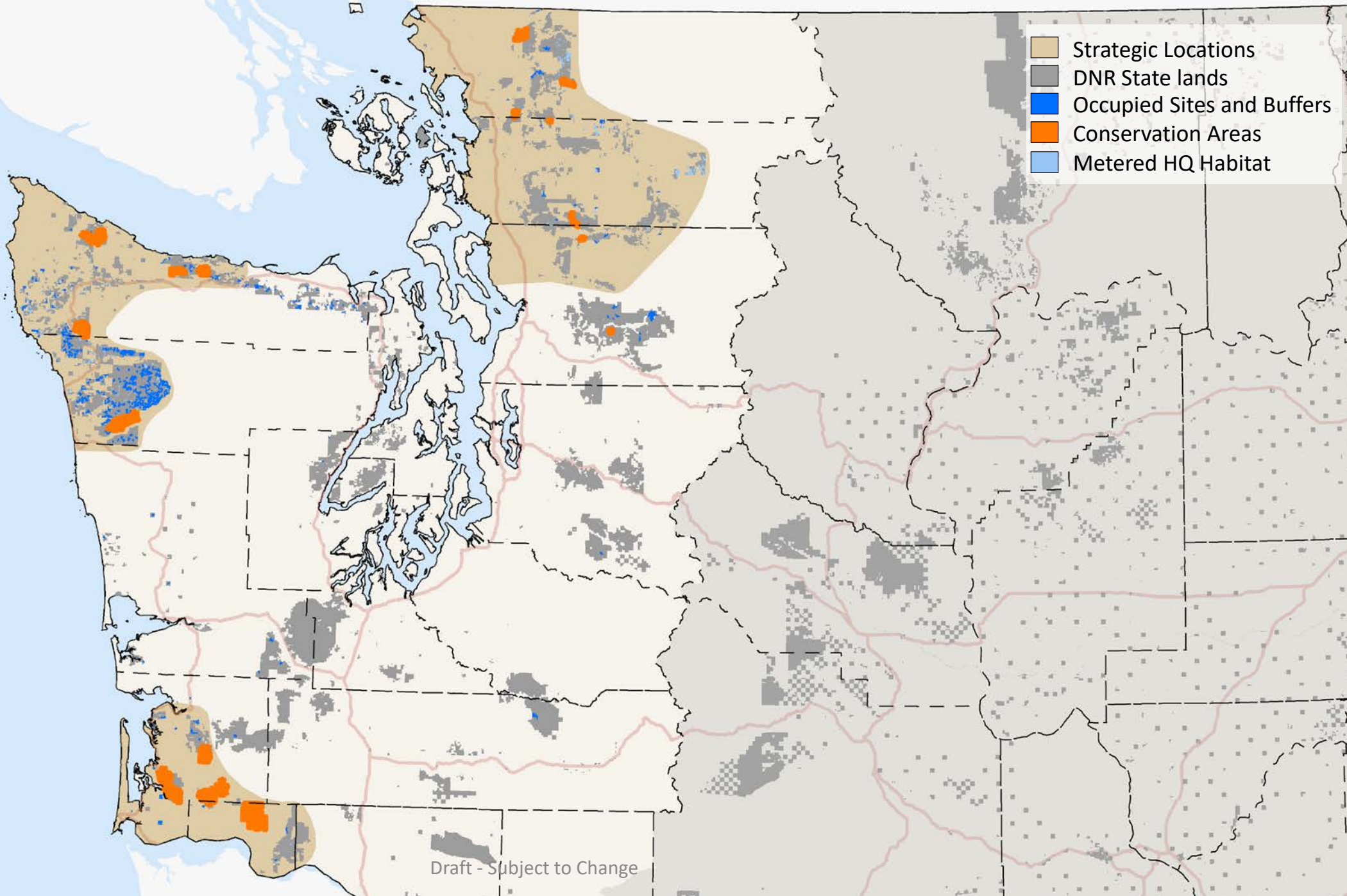
# Public comment

- ☑ Need more conservation near the Strait of Juan de Fuca
- ☑ Too much take of high-quality habitat
- ☑ Adverse economic impacts to some trusts
- ☑ Not enough mitigation for impacts
- ☑ Ongoing population decline

# Staff Proposed Alternative

- Conserves all occupied sites with buffers
- Meters habitat in strategic locations
- Adds conservation areas for interior forest
- Fully offsets impacts and adds additional conservation to cover uncertainty
- Reduces economic impact on heavily impacted county trust land





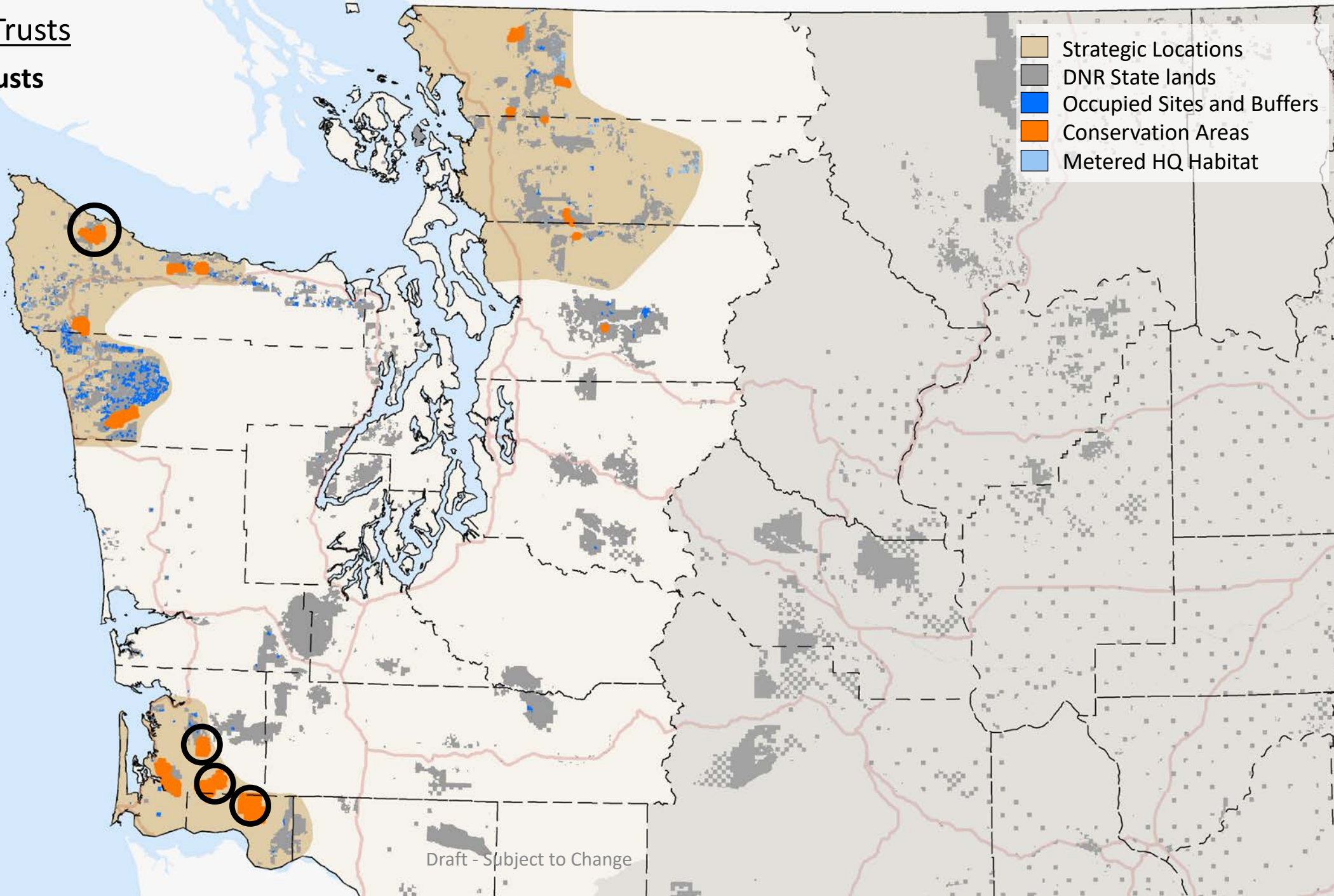
Draft - Subject to Change



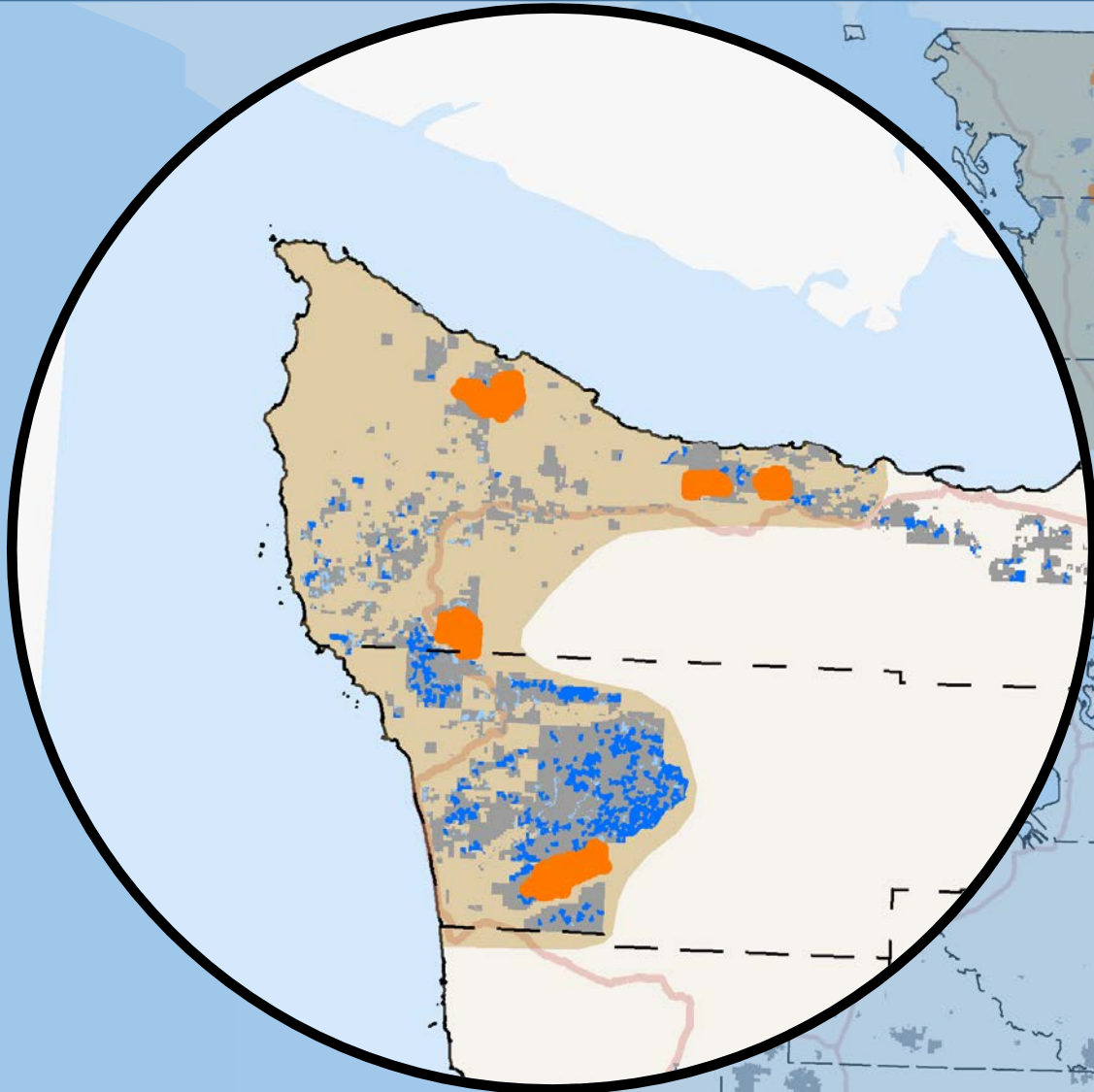
# Heavily Impacted Trusts

## State Forest Land Trusts

*-in-*  
Wahkiakum,  
Pacific, and  
Clallam counties.



Draft - Subject to Change

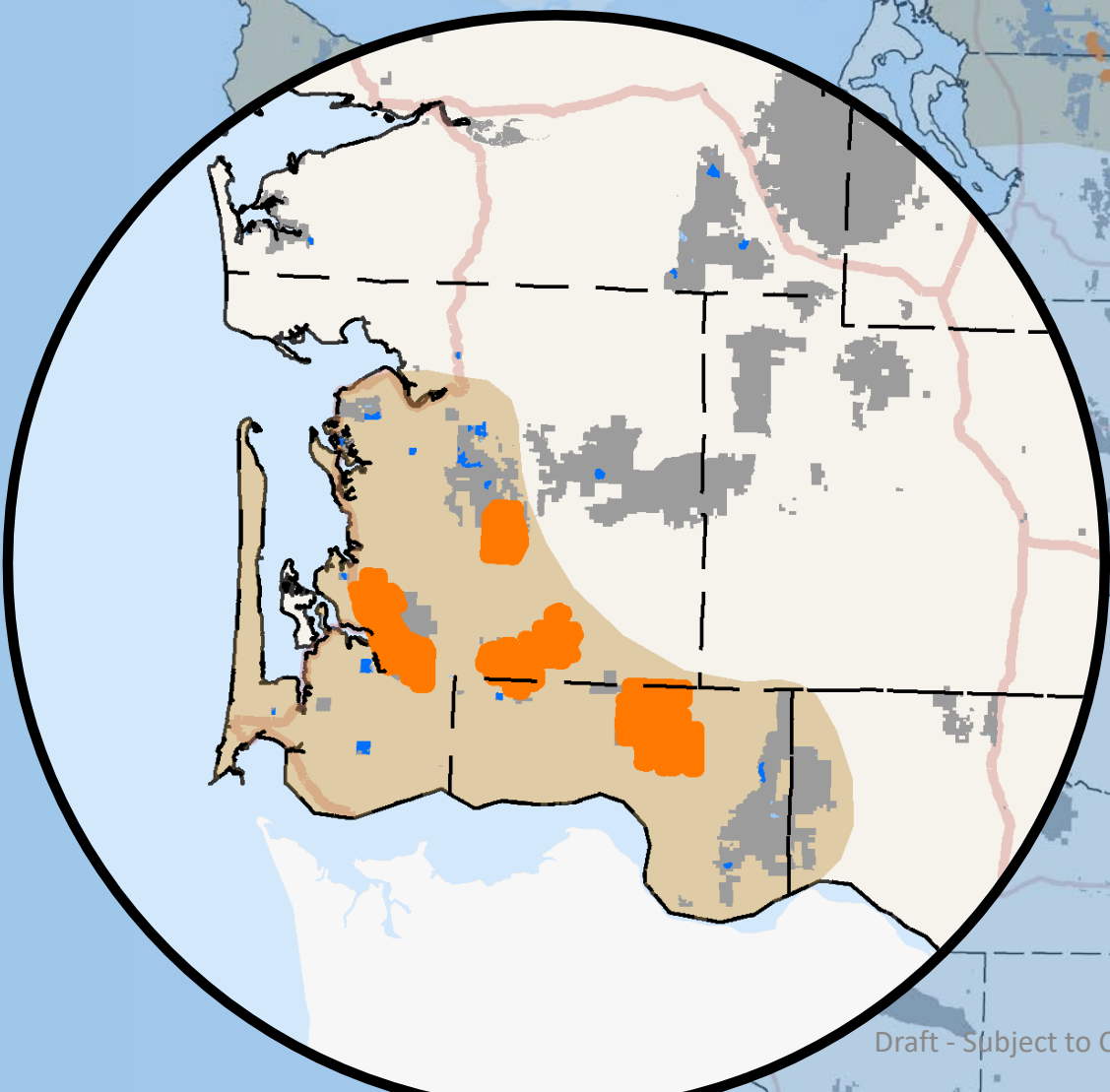


- Strategic Locations
- DNR State lands
- Occupied Sites and Buffers
- Conservation Areas
- Metered HQ Habitat

Draft - Subject to Change

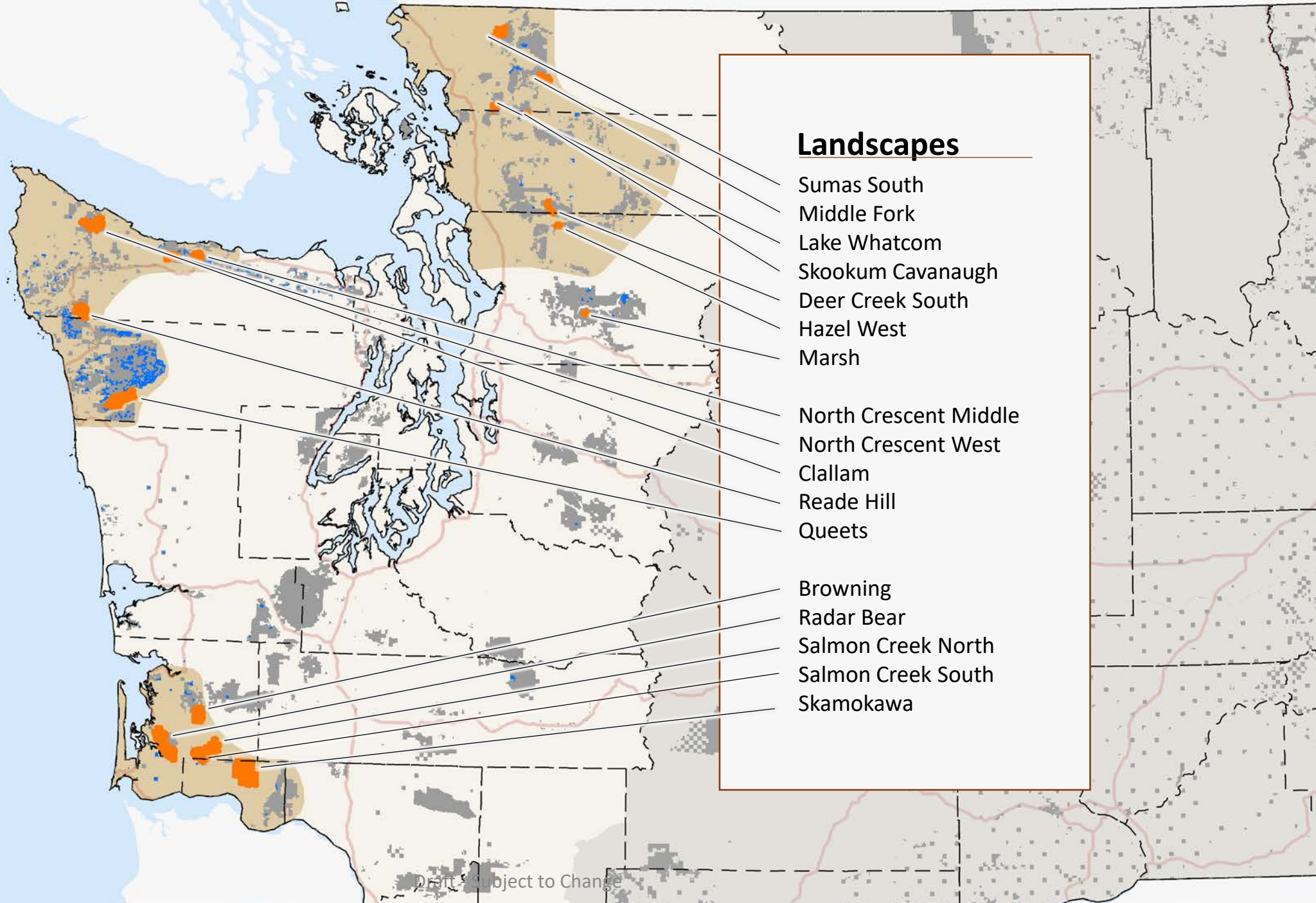


- Strategic Locations
- DNR State lands
- Occupied Sites and Buffers
- Conservation Areas
- Metered HQ Habitat



Draft - Subject to Change





## **Landscapes**

- Sumas South
- Middle Fork
- Lake Whatcom
- Skookum Cavanaugh
- Deer Creek South
- Hazel West
- Marsh
- North Crescent Middle
- North Crescent West
- Clallam
- Reade Hill
- Queets
- Browning
- Radar Bear
- Salmon Creek North
- Salmon Creek South
- Skamokawa

# Ballpark Numbers

	Impact	Mitigation	LTFC
Adjusted Acres	13,800	14,100	
Real Acres	42,000	43,000	626,000



# Staff Proposed Alternative

- Conserves all occupied sites with buffers
- Meters habitat in strategic locations
- Adds conservation areas for interior forest
- Fully offsets impacts and adds additional conservation to cover uncertainty
- Reduces economic impact on heavily impacted county trust land
  - Wahkiakum - Skamokawa Landscape
  - Pacific - Salmon Creek North and South, Browning Landscapes
  - Clallam - Clallam Landscape

# Riparian



# Preferred Alternative

---

- The Board expects riparian harvests to be conducted based on their ecological value as intended as part of the State Lands HCP Riparian Forest Restoration Strategy
- Harvest volume from riparian areas will not be included in the calculation of the sustainable harvest level
- Timber volume obtained from harvests in riparian areas can count towards meeting the sustainable harvest target

---

# Arrearage

---



# Preferred Alternative

---

Harvest 702 MMBF from the sustainable harvest units with deficits over 10 years



# Next Steps





## Next Steps

---

**Today:** Hear Public Comment

**November:** Decide on the Preferred Alternative

**Then take preferred  
alternative and  
produce:**

1. Supplemental Draft Environmental Impact Statement
2. Draft Habitat Conservation Plan Amendment



