

Mount Si

Trust Land Transfer

02-090367

King County



TLT Program Overview

- **Certain trust properties are better suited for recreation or conservation uses**
- **Legislature appropriates funds to buy out the trust's interest**
- **Trust Land Transfer program intended to benefit the Common School Trust**
- **Property is transferred to conservation status for recreation, open space or wildlife habitat purposes**



TLT Program Overview

- Timber value from transferred Common School Trust (K-12) property builds schools
- Land value buys replacement property for the Common School Trust



TLT Projects – 2013-2015

Sixteen TLT Transfer Projects

Project Name

Mount Si

Elk River

Stavis Remainder

Klickitat Canyon

Columbia Falls

Trombetta Canyon

Pleasant Valley

Knights Lake

Project Name

Beausite Lake

Morning Star

Green River 36

West Poulsbo

Spud Mountain

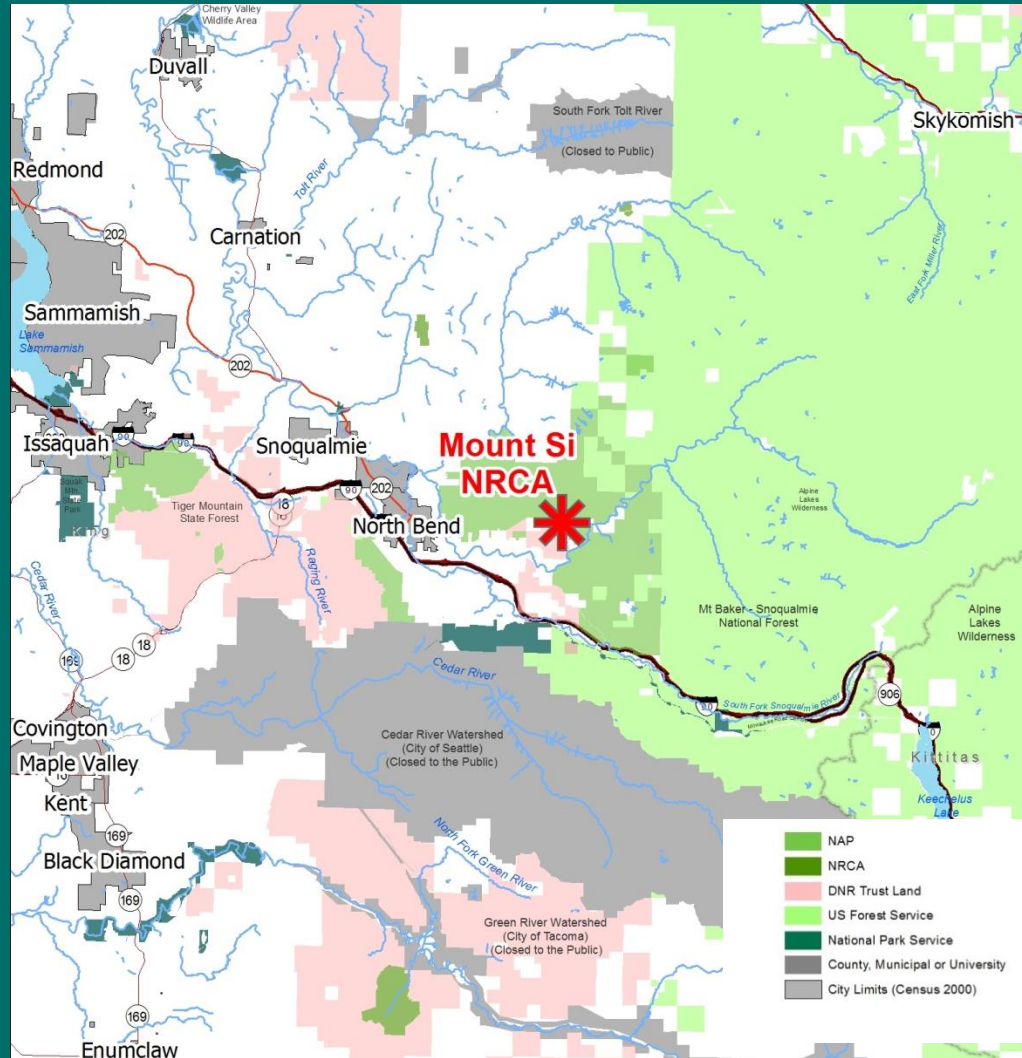
Lake Spokane

Cormorant Bay

Eatonville 200



Mount Si Trust Land Transfer



Located near
North Bend in
King County

Transfers into the
Mount Si NRCA

Mount Si Trust Land Transfer



Natural Areas staff photos

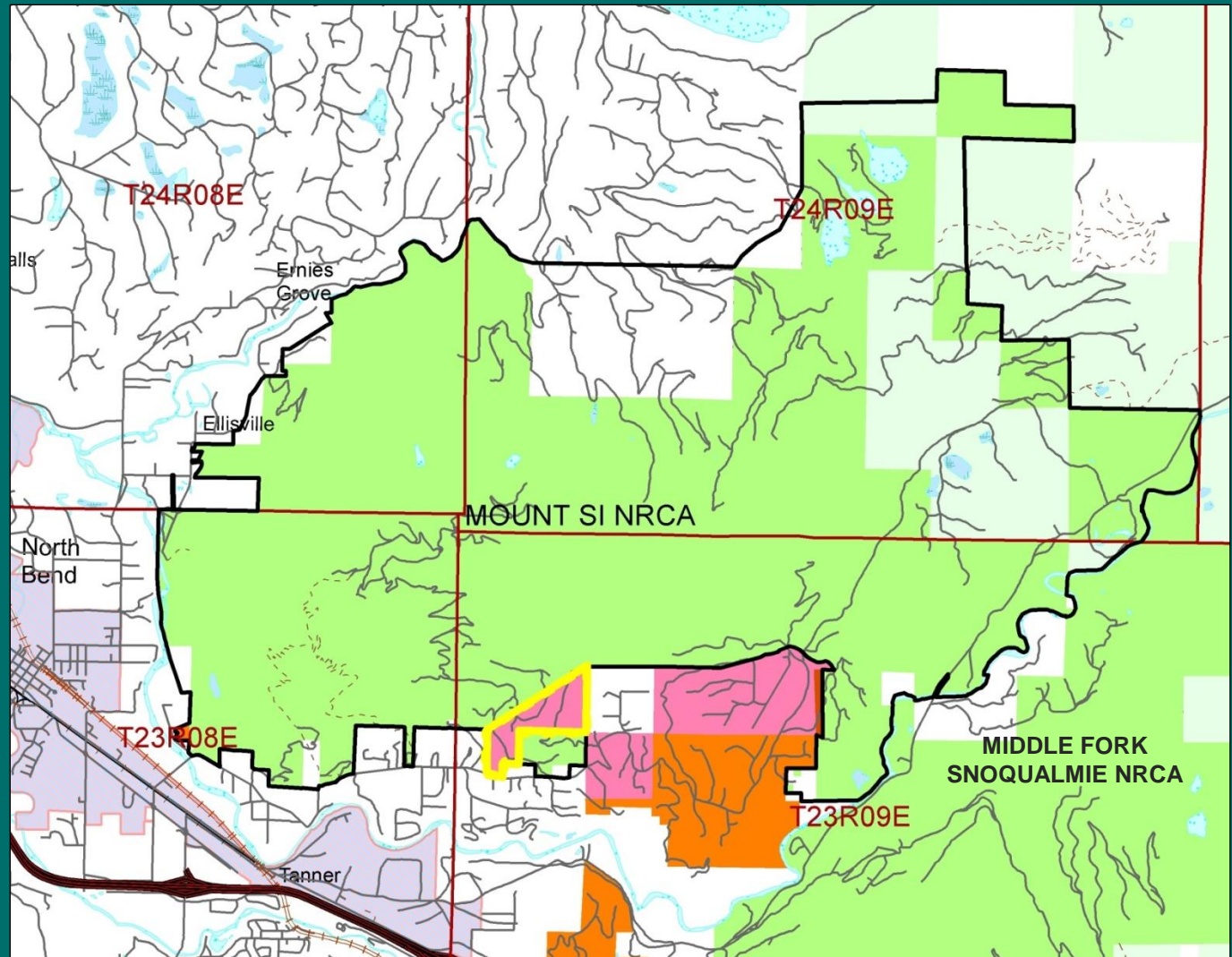
Mount Si NRCA includes old-growth forests, wildlife corridors, geologic features, high and low elevation lakes, & native mountain goat habitat

Part of the Mountains to Sound Greenway

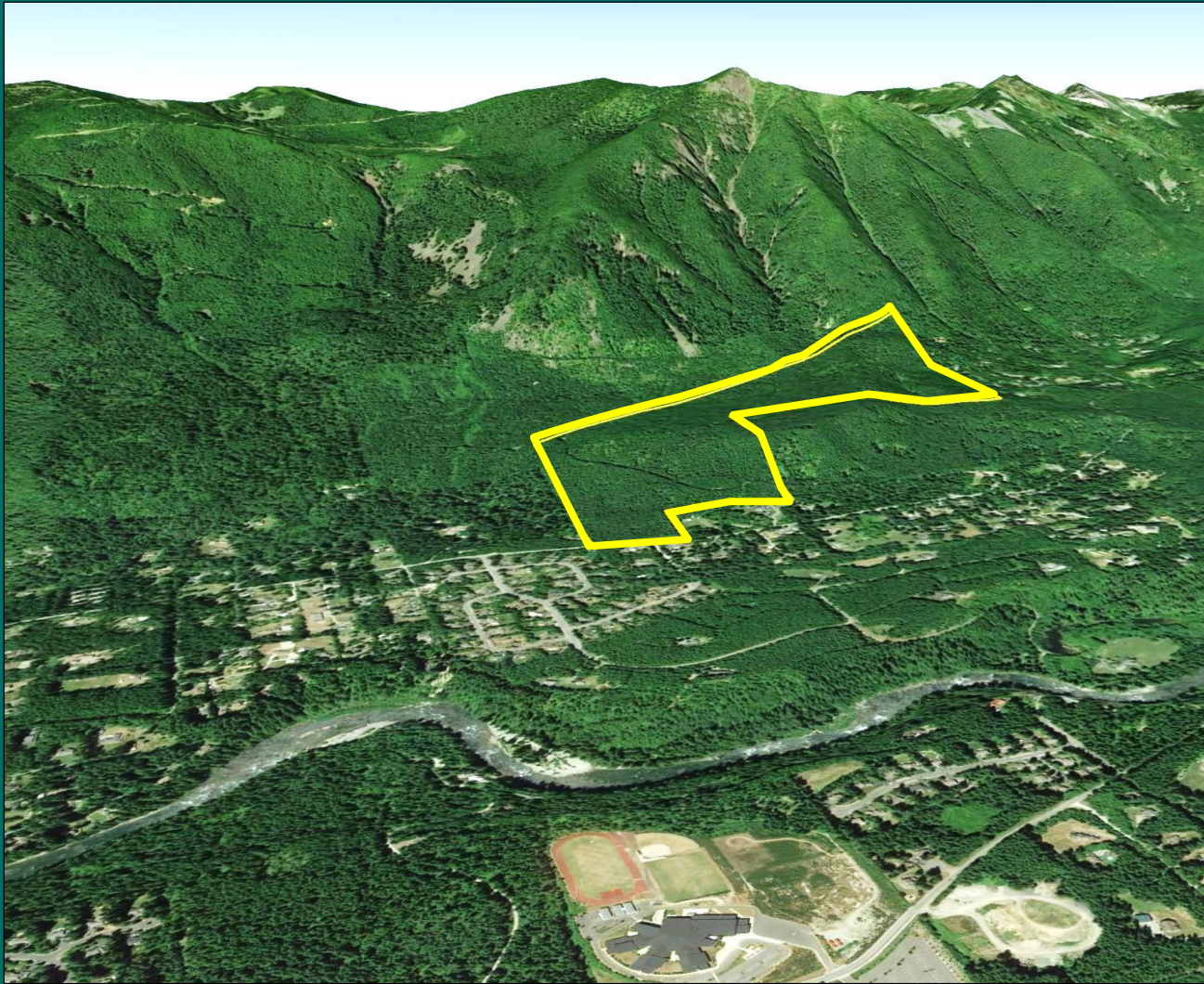
Mount Si Trust Land Transfer

Common
School Trust
proposed
for transfer

163.4 acres



Mount Si Trust Land Transfer



Google Earth

**Forest
and rural
residential
transition
area**

Mount Si Trust Land Transfer

Appraised Value of Transfer Property

Timber (1,930 MBF)	\$ 724,000	\$ 395 /MBF
Land (163.4 acres)	\$ 430,000	\$ 2,632/acre
Total	\$1,154,000	\$ 7,062/acre

Distribution of Funds

Timber Value - Common School Construction Account

Land Value - Real Property Replacement Account



Mount Si Trust Land Transfer

Questions ?

Resolution #1422



Kymm Boire photo





WASHINGTON STATE DEPARTMENT OF
Natural Resources

Peter Goldmark - Commissioner of Public Lands