

NISQUALLY 18

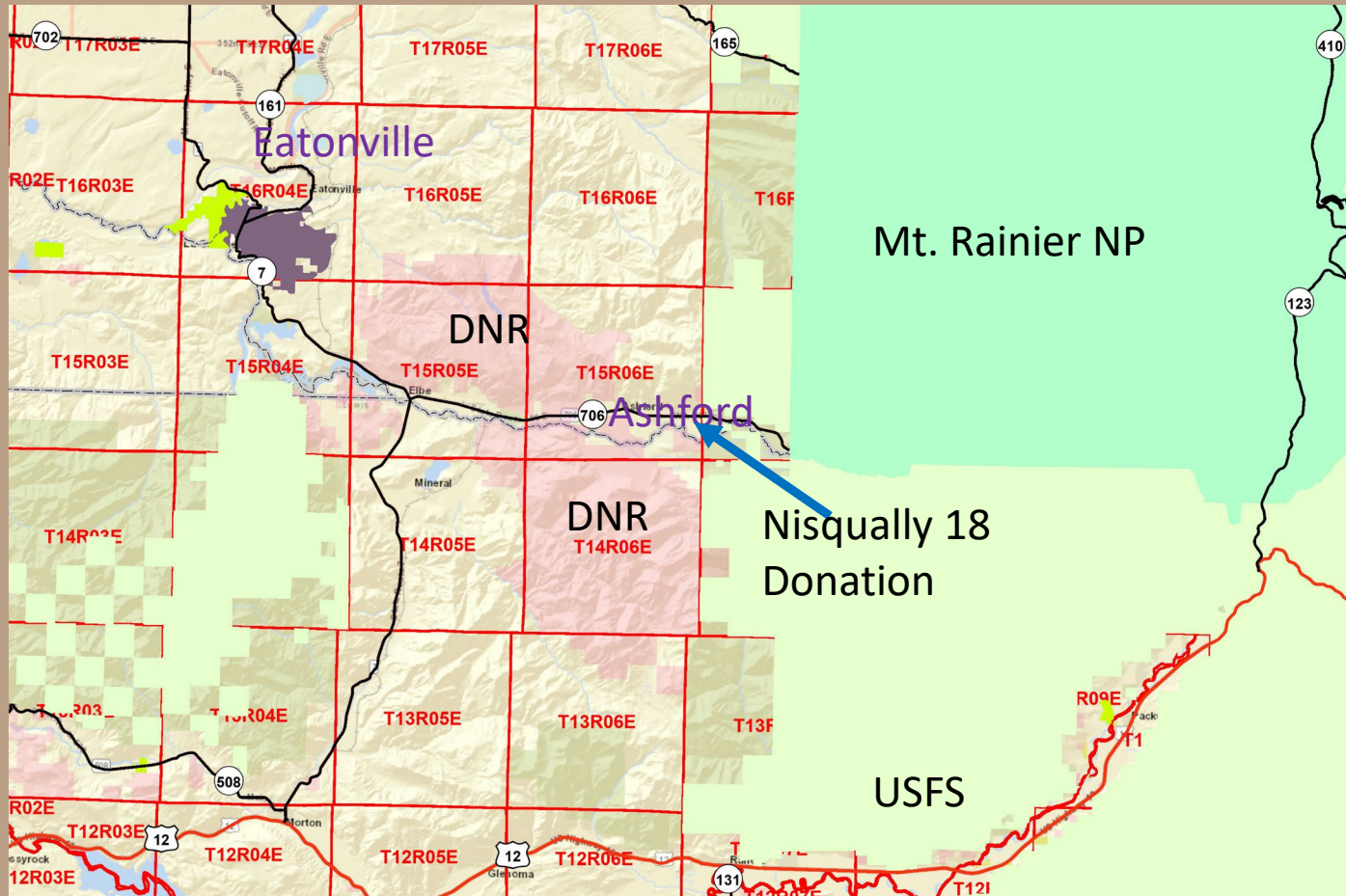
Donation to Common School Trust

Lewis County



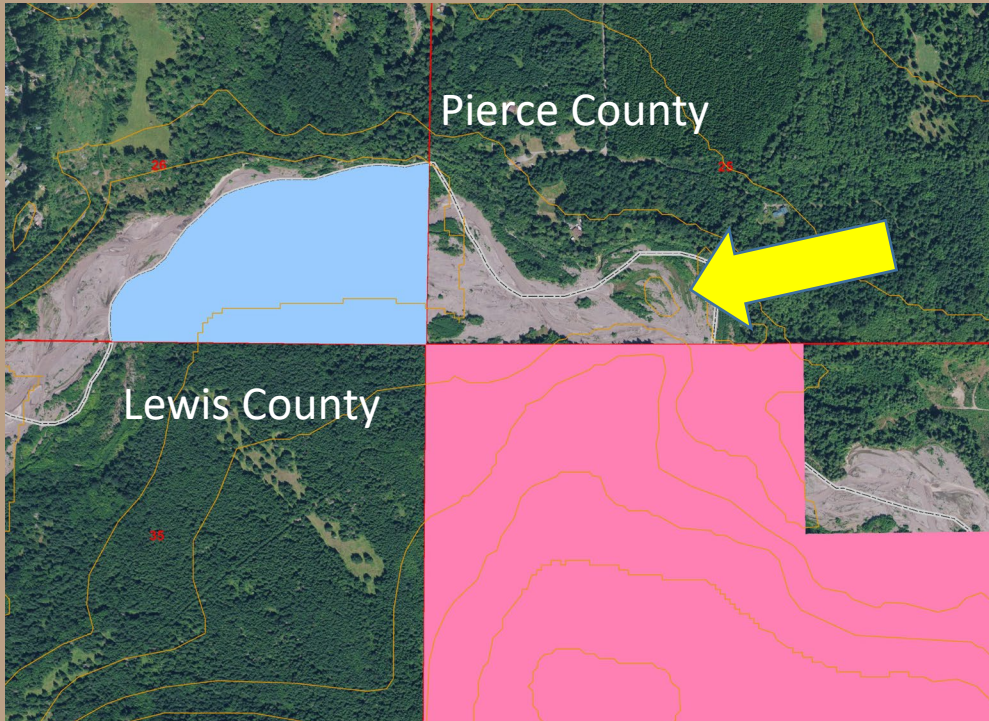
NISQUALLY 18

Vicinity



NISQUALLY 18

Overview

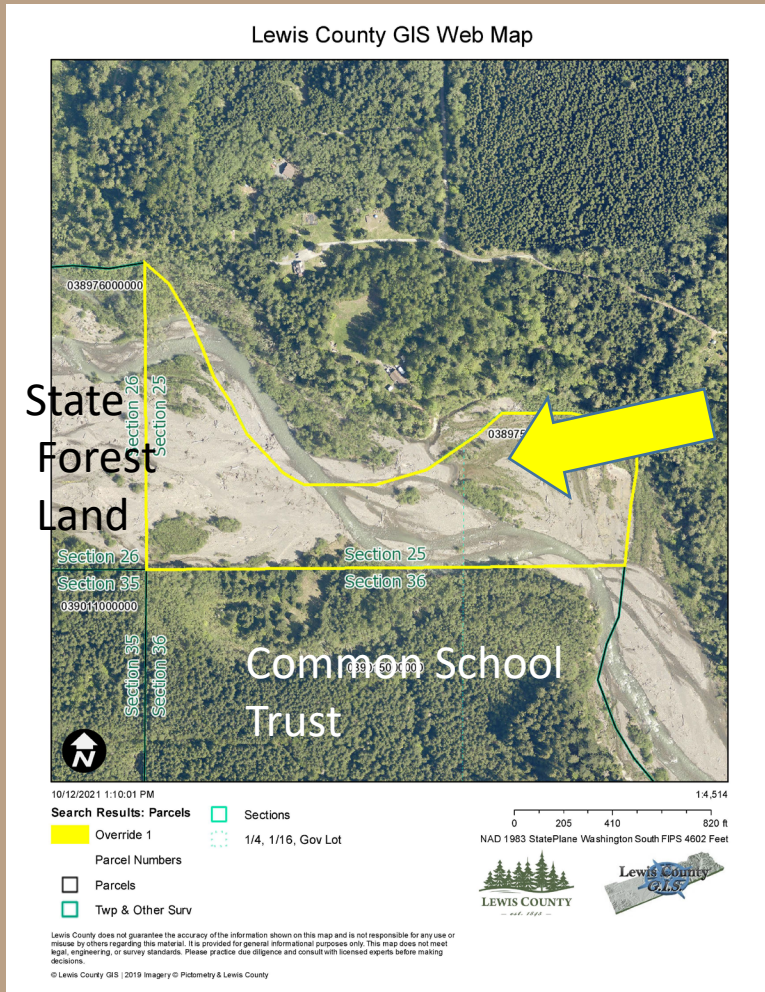


- **29.47 +/- acres**
- **Along Nisqually River**
- **Southeast of Ashford and near Mt. Rainier**
- **Edge-Holding for DNR**
- **Lewis County**



NISQUALLY 18

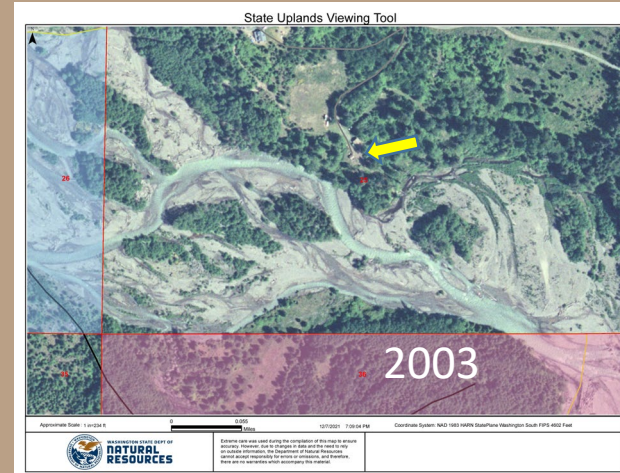
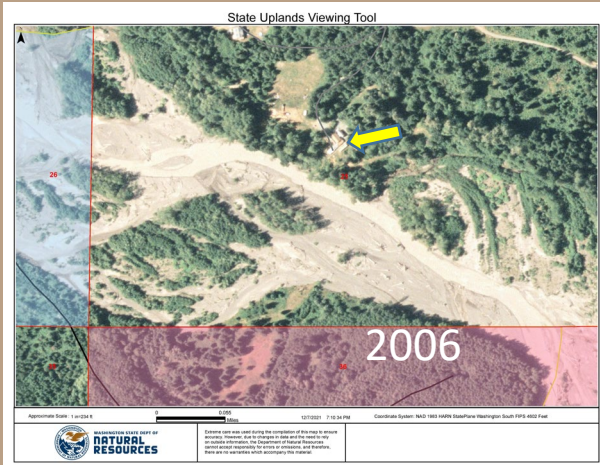
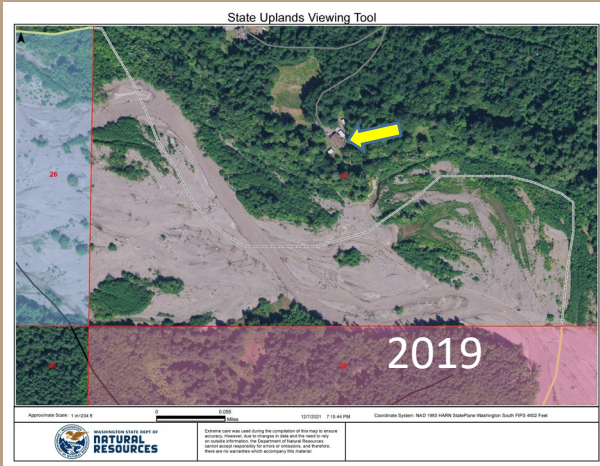
Ortho Image



- Riparian in nature
- River channel migration zone - habitat
- Supports HCP and low impact recreation
- Elk Wintering Habitat

NISQUALLY 18

River changes over time



NISQUALLY 18

Title and RCW

- **DNR and AG office have reviewed title – Acceptable**
- **Donations provided for under RCW 79.10.020**
- **Deed would be for Common School Trust**
- **DNR to cover the Closing Costs**



NISQUALLY 18

Resolution

Questions ?

Nisqually 18 Donation Resolution #1586



