



WASHINGTON STATE DEPARTMENT OF  
**Natural Resources**

---

**Peter Goldmark** - Commissioner of Public Lands

# Sustainable Harvest Calculation

For Forested State Trust Lands  
in Western Washington

A Report to the  
Board of Natural Resources

Angus Brodie  
February 2015



# Today's Objectives

- Informational
- Scoping period
- Provide background information, and staff recommendations, on two areas of interest for the alternatives:
  - Arrearage
  - Riparian



# Sustainable Harvest Calculation

- Scoping

- Scoping notice issued: January 29, 2015
- Comment period ends: February 27, 2015
- Live webinar: February 12, 2015  
4:00 p.m. – 5:00 p.m.



# Sustainable Harvest Calculation Scoping: Purpose

- Analyze the sustainable harvest level associated with the Marbled Murrelet Long-term Conservation Strategy (MMLTCS) alternatives
- Analyze alternative courses of action regarding the arrearage
- Incorporate new information



# Options to Consider

- Marbled murrelet
  - At an upcoming meeting
- Arrearage
  - Three options
- Riparian
  - Two options



# Arrearage



# Arrearage

- Arrearage – RCW 79.10

The summation of the annual sustainable harvest timber volume, less the sum of state timber sales contract default volume and the state timber sales volume deficit

- If an arrearage exists, then the Department will:
  - Conduct an analysis
  - Identify greatest return to the trusts
  - Offer for sale the arrearage in addition to the sustainable harvest level, if in best interests of the trusts





# Arrearage In Numbers

- Western Washington FY 2005-2014
  - Sustainable harvest = 5,500 MMBF
  - Sold volume = 5,062 MMBF
- Arrearage  
 $5,500 - 5,062 = 438$  MMBF



# Why is There an Arrearage?

- Land transactions
- Riparian harvest
- Interim marbled murrelet conservation strategy



# Arrearage Land Transactions

- Reposition land
- Provide revenue to beneficiaries
- Over time, transactions result in disposal of mature forests and acquisition of young forests



# Land Transactions FY 2005 -2014

All transactions	Acquired	Disposed
Land (acres)	<b>69,225</b>	<b>57,426</b>
Timber volume (MMBF)	<b>165</b>	<b>800</b>
Timber value (\$ millions)	<b>\$28</b>	<b>\$195</b>

Trust Land Transfer represented  
82% of the disposed timber volume

# Arrearage Trust Land Transfer (TLT)

- In the 2004 sustainable harvest calculation, some trust lands were placed in a harvest deferral status in anticipation of transferring them out of trust status

	TLT acres	TLT timber volume (MMBF)	TLT timber value (\$ millions)
Deferred	17,854	353	\$90
Not deferred	15,822	304	\$81
<b>Total</b>	<b>33,676</b>	<b>657</b>	<b>\$171</b>

# Arrearage Options



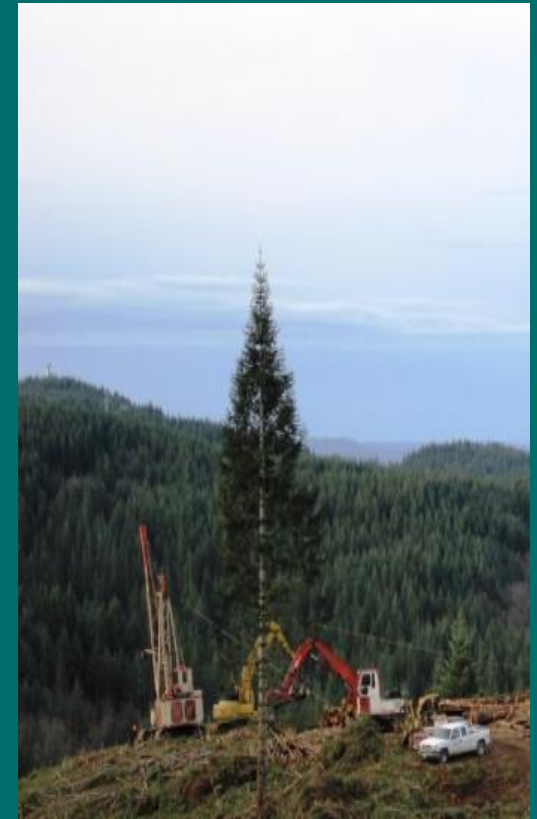
# Arrearage

## Options to Consider

- Option 1:

Incorporate arrearage into the starting forest inventory and schedule harvests over the planning horizon (i.e. 100 years)

438 MMBF



# Arrearage

## Options to Consider

- Option 2:

Schedule harvest for arrearage within first decade -

Non-deferred Trust Land Transfer volume



438 MMBF – 304 MMBF = 135 MMBF



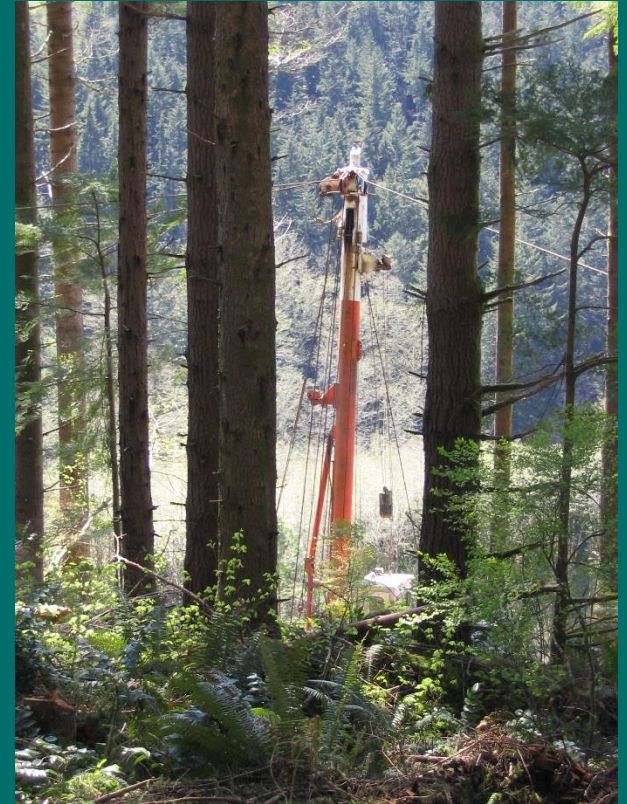
# Arrearage

Options to consider

- Option 3:

Harvest arrearage within the first 2 years of the decade

438 MMBF

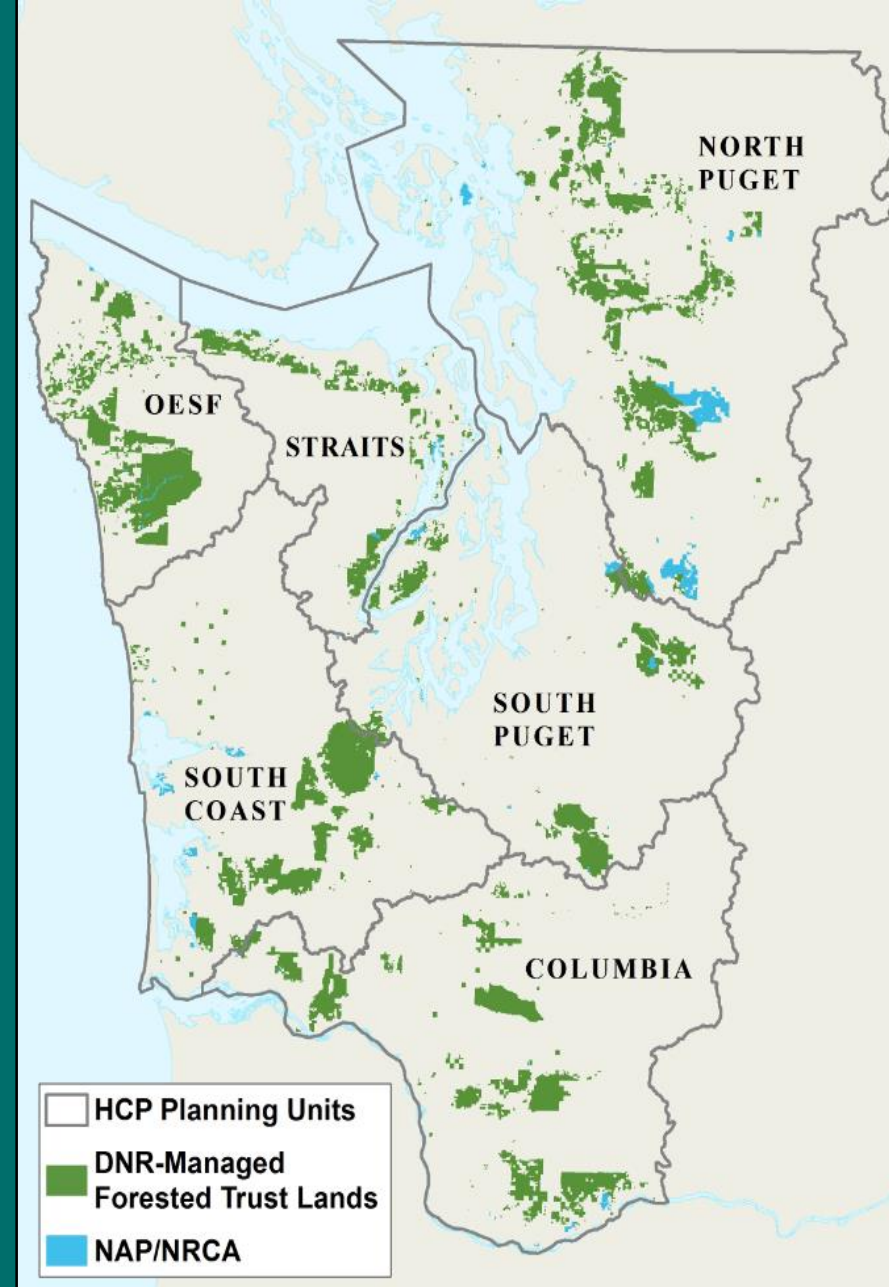


# Riparian



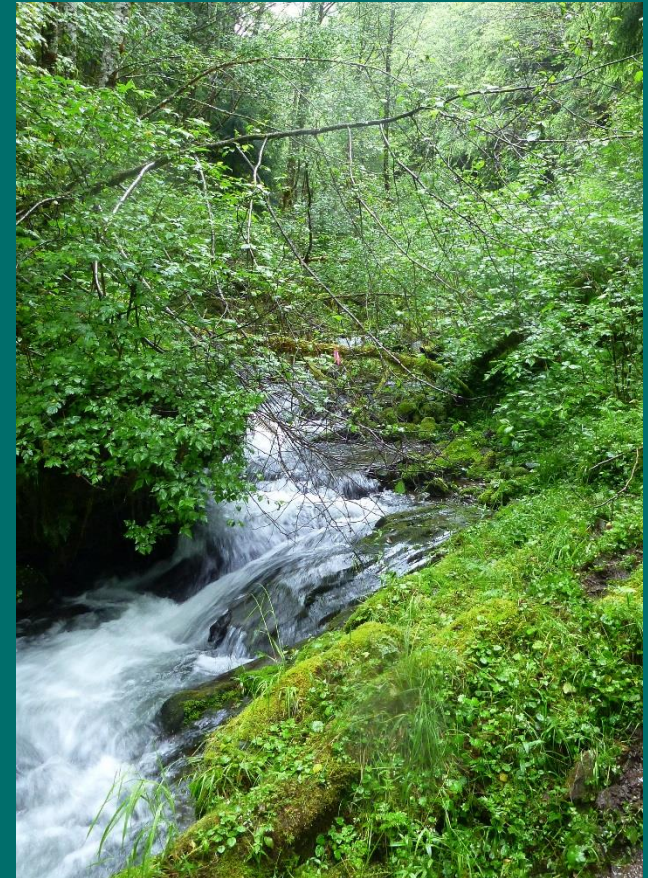
# Riparian Habitat Conservation

- Two Habitat Conservation Plan (HCP) strategies:
  - Riparian Forest Restoration Strategy (RFRS) applied to the 5 Westside HCP units
  - Olympic Experimental State Forest (OESF)



# Riparian Habitat Conservation

- Both strategies include:
  - Riparian management zones (RMZs)
  - Protection of potentially unstable slopes within the RMZs



# Riparian Habitat Conservation

- The two strategies (RFRS and OESF) differ:
  - RFRS has a desired future condition for the RMZ at the stand scale
  - OESF has an objective of restoring and maintaining riparian functions at a watershed scale



# Riparian Options



# Riparian

## Options to Consider

- Of the total sustainable harvest volume, how much will be from riparian areas?
  - Riparian management determined by:
    - HCP objectives
    - Forest conditions in riparian areas
    - Linkage to upland harvests

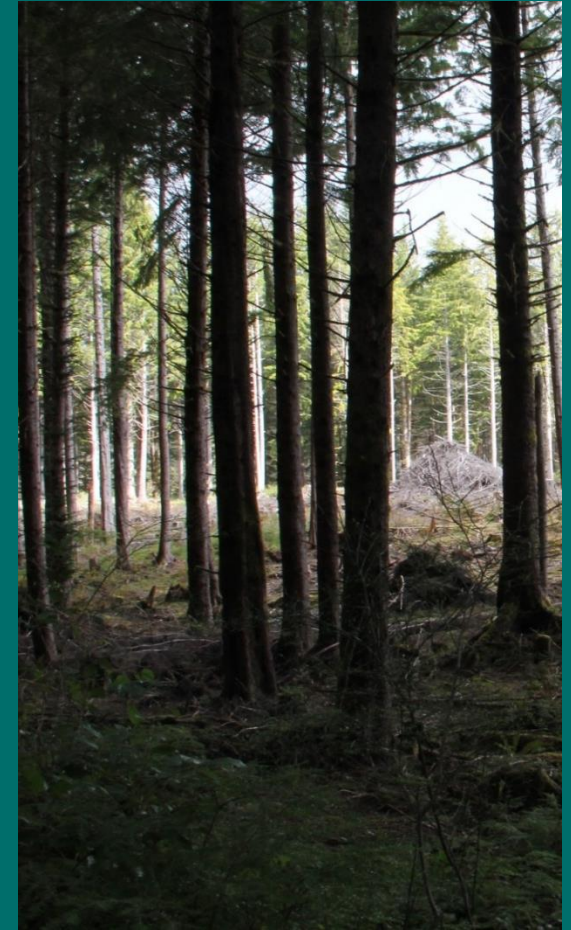


# Riparian

## Options to Consider

For the five westside  
HCP units – RFRS

- Option 1
  - Riparian restoration harvests are considered opportunistic
  - Activity acres likely not to exceed more than 100 acres per year
  - Approximates current performance





# Riparian

## Options to Consider

For the five Westside  
HCP units – RFRS

- Option 2
  - Riparian restoration harvests will not exceed the HCP RFRS
  - Not more than 1 percent of the total riparian area per year
  - Equivalent to approximately a maximum of 3,500 acres/year



# Options to Consider

Options	Arrearage	Riparian*
1	Include in forest inventory	Opportunistic
2	Deduct TLT, harvest in first decade	
3	Harvest in two years	Harvests area not to exceed 1% total riparian area

\*Riparian management in the OESF will use those alternatives presented in the 2013 Revised Draft EIS



# Next Steps

- Marbled murrelet
  - Baseline acres
  - Biological implications
  - Alternatives
  
- Sustainable harvest calculation
  - Scoping summary
  - Alternatives





WASHINGTON STATE DEPARTMENT OF  
**Natural Resources**

---

**Peter Goldmark** - Commissioner of Public Lands