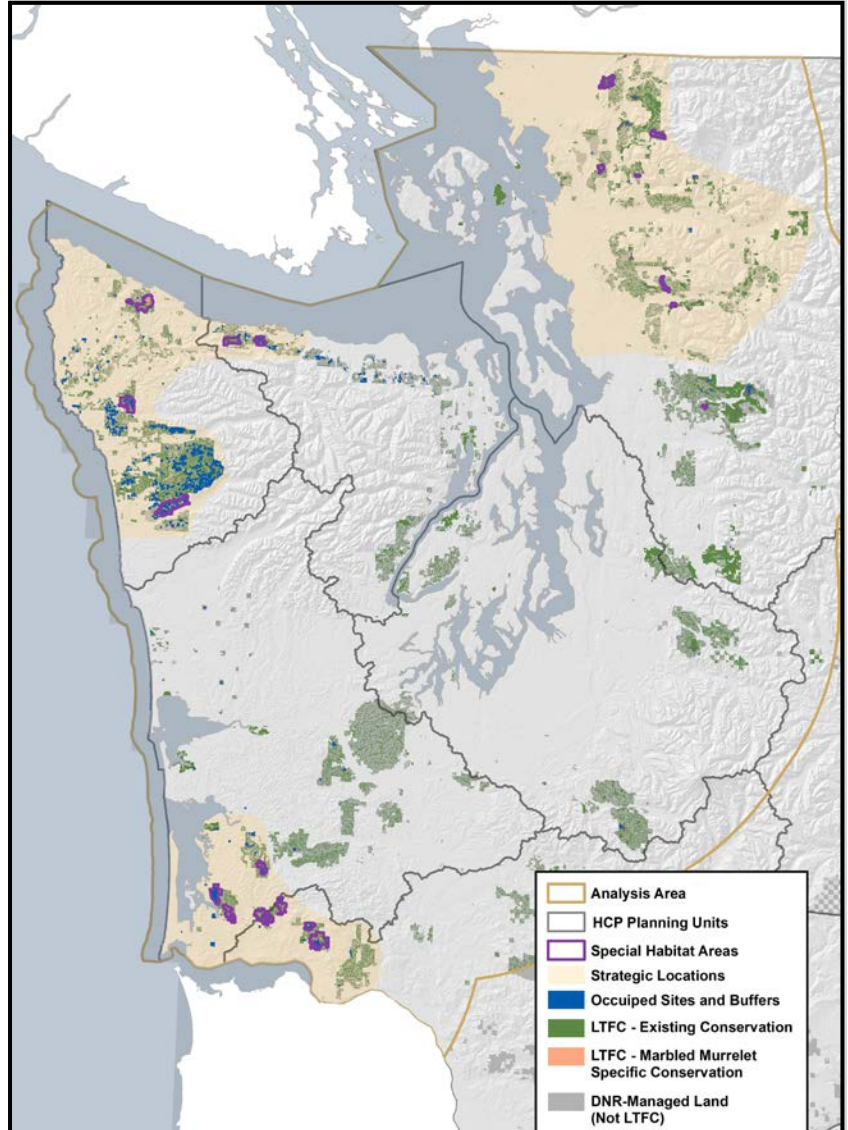




Alternative Profile

The staff recommended alternative concentrates marbled murrelet conservation into **20 special habitat areas**. Long-Term Forest Cover (LTFC) totals approximately **620,000 to 624,000 acres**. These special habitat areas are designed to increase the nesting productivity of existing occupied sites in strategic locations by increasing interior forest and reducing fragmentation and edge effects on those sites. The proposed alternative also **meters the harvest of existing marbled murrelet habitat** outside of LTFC within areas important to the murrelet in order to delay the short-term impacts to the marbled murrelet population. In this proposal, **impacts to marbled murrelet habitat, including those from harvesting, roads and edges, are entirely offset by mitigation**, as measured by DNR and USFWS' analytical framework. Moreover, the proposed alternative incorporates conservation strategies and additional mitigation to address uncertainties identified by USFWS and DNR. Finally the proposed alternative **reduces financial impacts to specific trusts and counties, including Pacific, Wahkiakum, and Clallam** that were heavily impacted in other alternatives analyzed in the Draft Environmental Impact Statement (DEIS).

Note: All reported acres, adjusted acres, and revenue impacts are estimates based on initial assessments done to date. Complete analyses will follow in a Supplemental Environmental Impact Statement and Financial Analysis.



Components

Occupied Sites & Buffers 88,000 gross acres

All occupied sites are conserved. All occupied sites will receive a 100-meter buffer except for those sites within the OESF that are larger than 200 acres. Those will receive a 50-meter buffer.

Special Habitat Areas 50,000 gross acres

Twenty special habitat areas (SHAs) concentrate conservation in strategic locations to maximize interior forest conditions around occupied sites and P-stage habitat, and minimize the P-stage habitat that would be subjected to edge conditions. Conservation on State Forest Lands in timber dependent counties, including Wahkiakum, Pacific, and Clallam, was modified from boundaries proposed in Alternative D in the DEIS.

Existing Conservation

Approximately 583,000 acres of DNR-managed lands are already in a conservation status supporting species conservation under DNR's HCP. These areas already protect 154,000 acres of today's murrelet habitat on DNR-managed lands. These areas are projected to see a twofold increase in habitat over the next 50 years to just over 306,000 acres of habitat.

Metering

The harvest of existing marbled murrelet habitat will be delayed in strategic locations. The purpose is to reduce and delay the initial impacts on the marbled murrelet population until later in the planning period when more habitat will be available on the landscape.

Numbers

estimated Impact	13,800 adjusted acres
estimated Mitigation	14,200 adjusted acres
estimated Epsilon	400 adjusted acres
estimated LTFC	620,000 – 624,000 acres
estimated SHAs	50,000 acres

Table 1. Draft financial analysis for staff's recommended alternative, including current revenue (annual net revenue FY 2011-2015 in 2015 dollars) and % Impact (change from Alternative A (no action) to the recommended alternative)

Trusts		Current Revenue	% Impact
Federally Granted Trusts	Agricultural School Grant	3,000,000	0%
	Capitol Building Grant	7,000,000	0%
	CEP&RI and CEP&RI transferred	4,000,000	0%
	Common School and Escheat	28,000,000	0%
	Normal School	1,000,000	-2%
	Scientific School Grant	6,000,000	1%
	University Grant	1,000,000	-7%
Other Lands	Community College Forest Reserve	500,000	0%
	Water Pollution Control Division Trust Land	200,000	0%
	Other	<100,000	0%
State Forest Trust Land	Clallam County	6,000,000	2%
	Cowlitz County	2,000,000	0%
	Grays Harbor County	200,000	2%
	Jefferson County	2,000,000	3%
	King County	2,000,000	1%
	Kitsap County	400,000	0%
	Lewis County	7,000,000	0%
	Mason County	3,000,000	0%
	Pacific County	1,000,000	-8%
	Pierce County	300,000	0%
	Skagit County	10,000,000	1%
	Snohomish County	11,000,000	0%
	Thurston County	3,000,000	1%
	Wahkiakum County	1,000,000	8%
Whatcom County	3,000,000	0%	