



June 4, 2024

Board of Natural Resources

Timber Sales Fact Sheets



HILARY S. FRANZ
COMMISSIONER OF PUBLIC LANDS

Product Sales and Leasing Division

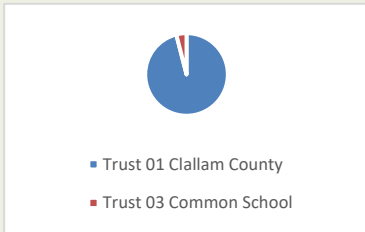
General Location



Sale Specifics

HCP Planning Unit: **Straits**
Management Block:
Sequim/Dungeness
Sale Type: **Contract Harvest**
Volume: **3,639 mbf**

Trust Distribution



Conservation Facts

Original planned area: **240 ac**
Final harvest area: **149 ac**
Conserved area: **91ac**
Percent contributed to Long-term forest cover: **38%**

Notable Protected Features

FP rule-identified landforms, Unstable Slopes, Riparian Areas, Wetlands, Old-Growth

Certifications

Sustainable Forestry Initiative

PISTOL PETE SORTS TIMBER SALE

Region: **Olympic**

County: **Clallam**

Planned BNR meeting: **June 2024**

Planned Auction date: **July 2024**

Status of timber sale: FPA approved, SEPA completed, NFD signed

HARVEST UNIT DETAILS

Unit	Acres	Harvest Type	Stand Origin
1	11	VRH	Post 1970
2	26	VRH	Post 1900
3	9	VRH	Post 1900
4	18	VRH	Post 1900
5	58	VRH	Post 1910
6	7	VRH	Post 1910
7	4	VDT	Post 1910
8	3	VRH	Post 1910
9	2	VRH	Post 1920
10	1	ROW	Post 1940
11	1	VRH	Post 1900
12	5	VRH	Post 1970
13	1	ROW	Post 1990
14	2	ROW	Post 2000
15	1	ROW	Post 1970

DESCRIPTION OF SALE

The Pistol Pete Sorts timber sale, agreement #30-104814, is located in Clallam County approximately 8 miles east of Port Angeles off of Blue Mountain Road. It encompasses approximately 240 gross acres with a cruised volume of 3,639 MBF. This sale consists of ten variable retention harvest (VRH) units, one variable density thinning (VDT) unit, and four right-of-way (ROW) units; all of which are located in the Siebert-McDonald WAU. Within the proposal area, there are 56 acres of riparian management zone and unstable slopes protections, 6 acres of forested wetlands, 20 acres of wetland management zones, 8 acres of designated as Leave Tree Areas (LTAs), and less than 1 acre of pre-existing roads. The net harvest acreage is 149 acres. Approximately 7,825 feet of new road construction, 2,145 feet of road reconstruction and 23,005 feet of required pre-haul maintenance have been proposed to meet access needs to the sale area.



Unit 3, Pistol Pete Sorts TS



Unit 4, Pistol Pete Sorts TS



Unit 5, Pistol Pete Sorts TS

Clearing and harvest operations within Right-of-Way Unit 10 will infringe on the Wetland Management Zone for the wetland centered between Units 6, 7, and 8. As mitigation for the infringement, the buffer was adjusted with on-site and in-kind mitigation to compensate for the loss of buffer acreage. There will be no loss of function to the WMZ. Additionally, Unit 7 is a variable density thinning within portions of a forested WMZ and Type 3 RMZ and will be managed per the Department of Natural Resources HCP and Riparian Forest Restoration Strategy. For every acre of Type 3 RMZ thinning, 5 trees have been designated to be cut and felled towards the stream; and will be left on-site as large woody debris for these streams. There is one type-1 stream associated with this timber sale: McDonald Creek. This stream is protected with a 170-foot site index buffer based on the Douglas-fir site potential height at age 100. However, due to the steep convergent topography with shallow landslide deposits directly adjacent to the stream, additional buffer was applied.

Pistol Pete Sorts timber sale units were reviewed by an Old Growth Designee as well as qualified field staff for the presence of old growth and older trees. As a result, one small clump of legacy old-growth trees were identified within the harvest area, not constituting 5 acres in size. These trees have been marked for retention.

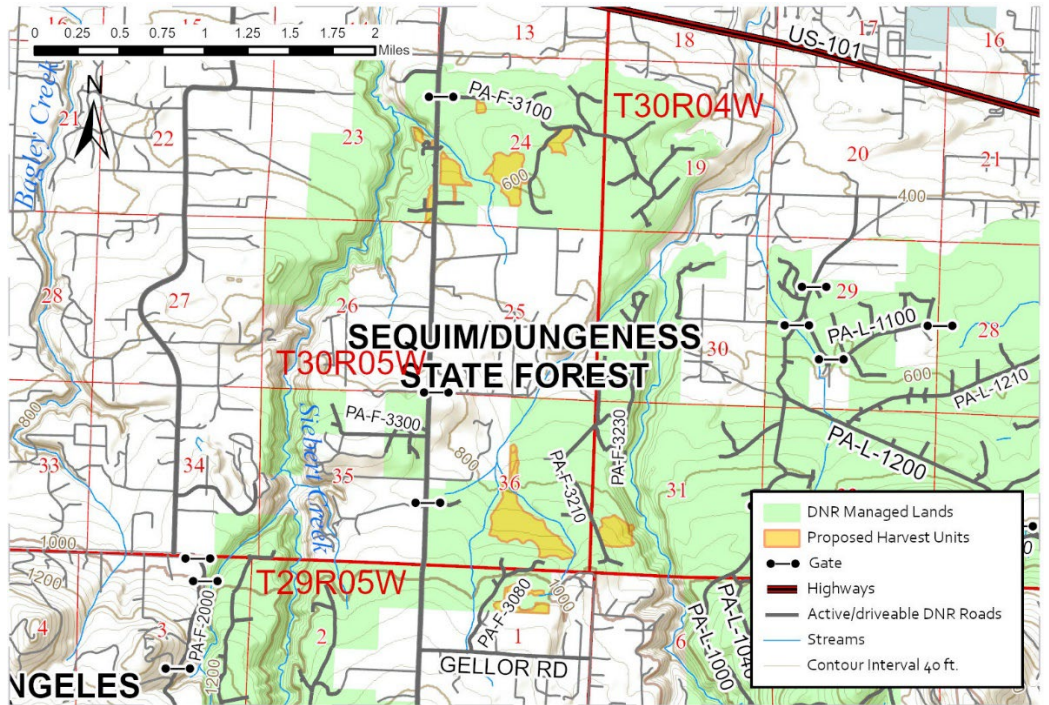
STAND ASSESSMENT

Unit 1 keys out as Maturation 1 with a homogenous Douglas fir canopy and a western red cedar understory, it is < 50 years old with very simple stand structure. Both Units 2 and 3 key out to Maturation 1, with a Douglas fir overstory that is between 100 and 120 years old, the understory is predominantly western red cedar (WRC). Unit 4 keys out to Maturation 1 but with three different dominant species zones as the SW portion has a <120 year old Douglas fir overstory and WRC understory; Mid-unit being a <100 year old WRC/hemlock with WRC in the understory; the Eastern edge being a <90 year old mix of deciduous species, Douglas fir, and WRC. Unit 5's southern interior and eastern edge keys to Maturation 2 with Douglas fir, grand fir, WRC, western hemlock in the overstory and shade tolerant species in mid and understories. This stand is ~100-110 years old. The SW edge of Unit 5 is Maturation 1 and is <110 years old, with a Douglas fir overstory and WRC/WH understory. Units 6, 7 key out to Maturation 1 as it is <110 years old, with a Douglas fir overstory and hemlock/WRC understory. Unit 8 is ~100-110 years old and keys out to Maturation 2, with Douglas fir, grand fir, WRC, western hemlock in overstory with shade tolerant species in mid and understories. Unit 9 is a Maturation 1 WRC stand that is < 100 years old. Unit 11 is sparse Maturation 2, with a 1-acre tuft of scruffy Douglas fir that is <120 years old. Unit 12 keys out to Maturation 1, with a homogenous Douglas fir canopy with sparse WRC understory, stand is < 50 years old with a very simple stand structure. Unit 15 keys out to Maturation 1 with a homogenous Douglas fir canopy with shrub understory, it is < 50 years old with very simple stand structure.

LANDSCAPE VIEW



Unit 5, Pistol Pete Sorts TS



SILVICULTURAL PRESCRIPTION

Species	Stock Type	Trees Per Acre
Grand Fir	P+1	50
Douglas Fir	1+1	300
Western Redcedar	P+1	50

ESTIMATED TRUST 01 REVENUE BREAKDOWN*

Trust 01 - Clallam County - TCA 202**

Taxing District	Total to Fund
Clallam County Roads	\$ 83,605.67
Sequim SD Enrichment	\$ 93,124.84
Sequim SD CP/Bonds	\$ 46,671.76
Port of Port Angeles	\$ 11,870.74
State 1	\$ 162,013.58
State 2	\$ 86,913.81
Conservation Futures	\$ 1,915.02
Clallam County	\$ 82,814.56
Fire District #3 General	\$ 120,307.81
Fire District #3 EMS	\$ 38,045.31
North Olympic Library	\$ 31,539.85
Hospital District #2	\$ 34,126.36
Totals:	\$ 792,949.31



Unit 9, Pistol Pete Sorts TS

*Estimate based on appraisal

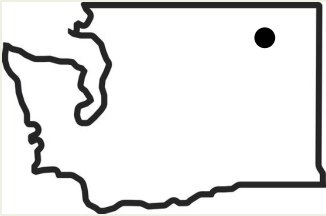
**Based on 2023 assessment for 2024 tax year



HILARY S. FRANZ
COMMISSIONER OF PUBLIC LANDS

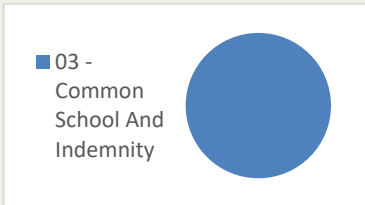
Product Sales and Leasing Division

General Location



HCP Planning Unit: **N/A**
Management Block: **Highlands District**
Sale Type: **Lump Sum**
Volume: **3,738 MBF**

Trust Distribution



Conservation Facts

Original planned area: **351 ac**
Final harvest area: **348 ac**
Conserved area: **2 ac**
Existing roads: **1 ac**

Notable Protected Features

Streams, Wetlands, Legacy Trees, FP rule-identified landforms

Certifications

Sustainable Forestry Initiative

Q KLONDIKE TIMBER SALE

Region: **Northeast**

County: **Ferry**

Planned BNR meeting: **June 2024**

Planned auction date: **July 23, 2024**

Status of timber sale: FPA approved, SEPA process complete. One comment from ECY regarding water quality program. No response was necessary. NFD has been signed.

HARVEST UNIT DETAILS

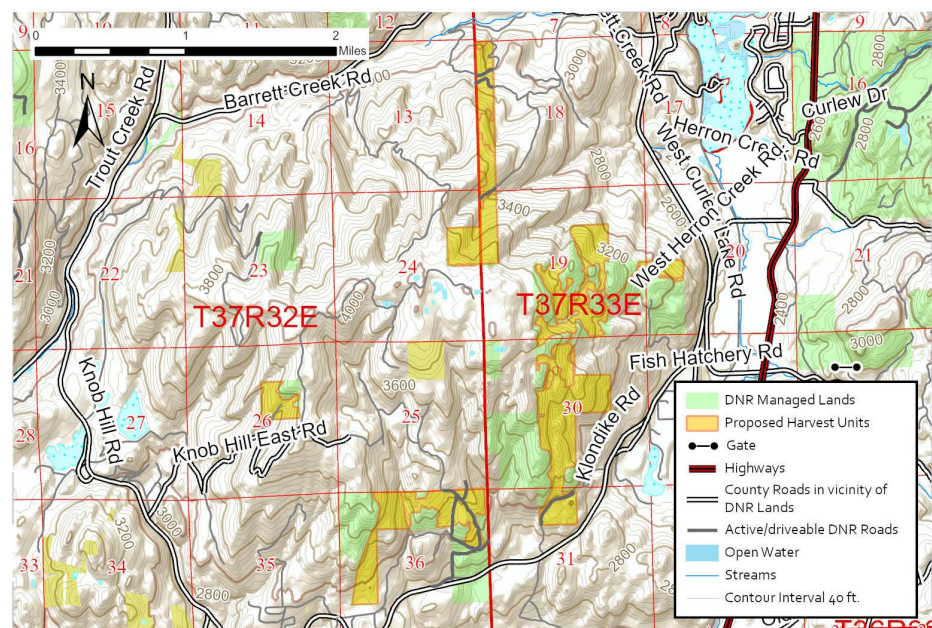
Unit	Acres	Harvest Type	Stand Origin
1	35	VRH	1912
2	23	VRH	1912
3	51	VRH	1903
4	43	VRH	1903
5	68	VRH	1907
6	8	Shelterwood	1915
7	15	VRH	1908
8	25	VRH	1915
9	35	Shelterwood	1915
10	44	Shelterwood	1902
ROW	1	Land Conversion	1905

DESCRIPTION OF SALE

Overall objectives for this proposal have been prescribed to achieve and maintain an improved forest health condition by mimicking the natural disturbance regime of the ecosystems. This will be attained by reducing stocking levels and removing non-vigorous trees to reduce the likelihood of a disease or insect outbreak that might spread across the landscape. An even-aged variable retention harvest prescription has been chosen for Units 1, 2, 3, 4, 5, 7, and 8 to best meet these objectives. An uneven-aged intermediate shelterwood removal harvest prescription has been chosen for Units 6, 9, and 10 to target diseased trees for removal while retaining healthy understory advanced regeneration. Understory vegetation includes grass, ocean spray, mallow ninebark, and common snowberry. Douglas-fir is the dominant

species. Leave trees range in diameter from 10 to 42 inches. The average leave tree diameter is 21 inches. The proposal was marked to leave at least six trees per acre, selected from the largest available. Reserve trees were selected in accordance with DNR's Retention and Perpetuation of Biological Legacies and Green Trees Procedure and Forest Practices Rules. Trees were left individually and in clumps to be conducive to safe operations and allowing distribution of wildlife trees throughout the proposal. All Legacy Trees are retained. Snags and downed wood are left in accordance with Forest Practice Rules.

LANDSCAPE VIEW

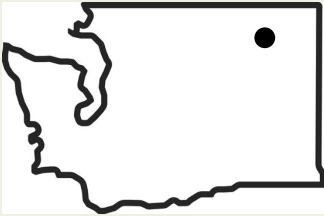




HILARY S. FRANZ
COMMISSIONER OF PUBLIC LANDS

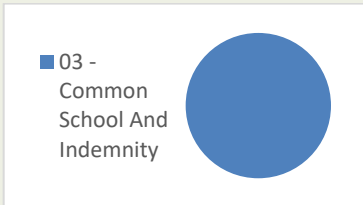
Product Sales and Leasing Division

General Location



HCP Planning Unit: **N/A**
Management Block: **Highlands District**
Sale Type: **Lump Sum**
Volume: **2,391 MBF**

Trust Distribution



Conservation Facts

Original planned area: **273 ac**
Final harvest area: **270 ac**
Existing roads: **3 ac**

Notable Protected Features

Streams, Wetlands, Legacy Trees, FP rule-identified landforms

Certifications

Sustainable Forestry Initiative

Q COPPER SWAN TIMBER SALE

Region: **Northeast**

County: **Ferry**

Planned BNR meeting: **June 2024**

Planned auction date: **July 23, 2024**

Status of timber sale: FPA approved, SEPA process complete. One comment from ECY regarding water quality program. No response was necessary. NFD has been signed.

HARVEST UNIT DETAILS

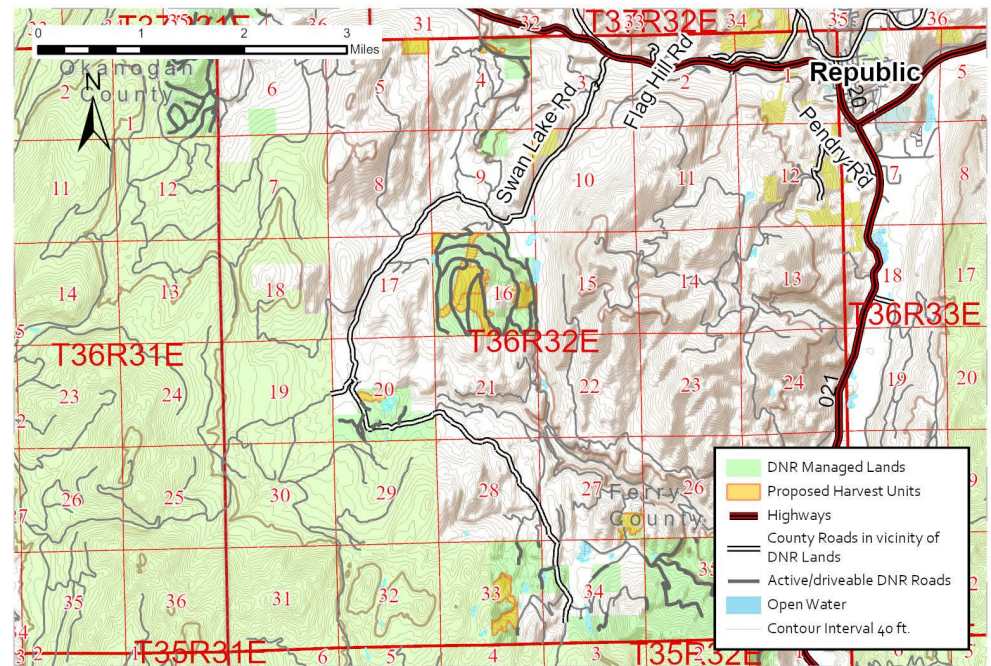
Unit	Acres	Harvest Type	Stand Origin
1	22	VRH	1902
2	6	VRH	1943
3	10	VRH	1902
4	78	VRH	1905
5	40	Shelterwood	1912
6	28	VRH	1912
7	11	VRH	1951
8	26	VRH	1921
9	48	VRH	1921
ROW	1	Land Conversion	1921

DESCRIPTION OF SALE

Overall objectives for this proposal have been prescribed to achieve and maintain an improved forest health condition by mimicking the natural disturbance regime of the ecosystems. This will be implemented by reducing stocking levels and removing infection vectors for current and potential pathogens. Even-aged variable retention harvest prescriptions have been chosen for units 1,2,3,4,6,7,8 and 9 to best meet these objectives. An uneven-aged shelterwood removal prescription has been chosen for Unit 5 to remove diseased trees while retaining healthy understory and advanced regeneration. Understory vegetation includes grass, snowberry, alder, ninebark, and service berry. Douglas-fir is the dominant species. Leave trees range in diameter from 10 to 32 inches. The average leave tree diameter is 18 inches. The proposal was marked to leave at least six trees per acre, selected from the largest available. Reserve trees were selected in accordance with DNR's Retention and Perpetuation of Biological

Legacies and Green Trees Procedure and Forest Practices Rules. Trees were left individually and in clumps to be conducive to safe operations and allowing distribution of wildlife trees throughout the proposal. All Legacy Trees are retained. Snags and downed wood are left in accordance with Forest Practice Rules.

LANDSCAPE VIEW





HILARY S. FRANZ
COMMISSIONER OF PUBLIC LANDS

Product Sales and Leasing Division

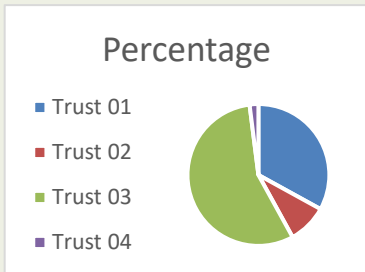
General Location



Sale Specifics

HCP Planning Unit: **North Puget**
Management Block: **Stimson**
Sale Type: **Lump Sum**
Volume: **7,930 mbf**

Trust Distribution



Conservation Facts

Original planned area: **200 acres**
Final harvest area: **152 acres**
Conserved area: **48 acres**
Percent contributed to Long-term forest cover: **24%**

Notable Protected Features

Stream riparian areas, structurally unique trees, delineated old growth, inner gorge slopes, RILS, excluded ground water recharge

Certifications

Sustainable Forestry Initiative

STILLY REVISTED TIMBER SALE

Region: **Northwest**

County: **Snohomish**

Planned BNR meeting: **June 2024**

Planned auction date: **July 2024**

Status of timber sale: FPA approved, SEPA -NFD signed February 23, 2024

HARVEST UNIT DETAILS

Unit	Acres	Harvest Type	Stand Origin
1	10.7	VRH	1926
2	14.5	VRH	1929
3	0.9	VRH	1929
4	0.4	VRH	1929
5	30.1	VRH	Late 1850s on north end, 1930s DF on the south end
6	92.1	VRH	Late 1850s-1940s (mixed, extensive coring done in this unit)

DESCRIPTION OF SALE

Stilly Revisited is comprised primarily of western hemlock, Douglas-fir, and Pacific silver fir. The largest and most unique trees were targeted for scattered leave trees. Larger leave tree groups were designed to maintain the characteristics of the stand and protect unique trees. An old growth polygon was delineated by an old growth designee, which resulted in a new old growth area delineation that was avoided and excluded from all areas of harvest. Riparian areas are steep with similar characteristics of the adjacent upland harvest areas. This sale area is surrounded by commercial forest stands with a range of age classes and developmental stages. The range includes stands similar to this proposal and younger stands, with the exception of Unit 6 which has a rural development on the opposite side of the ridge from the planned harvest.

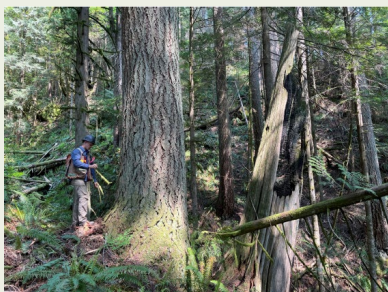
The current stands naturally regenerated following 19th century (and later) fire events, as well as multiple timber harvest 'entries' (i.e., clear cutting and cedar high-grading), which occurred up to the mid-1900s. This has yielded a range of stand ages that span the period of late 1850s to the 1950s. The oldest of these are hemlock dominant areas that clearly established following a large-scale stand regenerating fire that occurred around 1850. Dwarf mistletoe infestation is widespread and combined with other forest health issues, has led to significant



Fire scar on remnant stump/snag next to larger hemlock second growth.



Picture of stand of older hemlock affected by forest health issues.



Coring large Douglas-fir (53" dbh, 132 years old) next to remnant component.

mortality throughout these areas. The largest dominant Douglas-fir (e.g., southern half of Unit 5) are much healthier, with some having obtained DBHs greater than 50 inches and heights in excess of 200 feet. Though the contiguous old growth stand (described below) is largely confined to an area between Units 1 and 2, there are also scattered individuals found within the units (which have been prioritized as leave trees). However, the largest concentration is a linear strip within a steep creek ravine where they were shielded from fire.

OLD GROWTH ASSESSMENT / UNIQUE SALES CHARACTERISTICS / CONSERVATION AREAS

Stilly Revisited is Maturation I/Maturation II. Old growth assessment work, performed by an experienced old growth designee, was conducted throughout much of the proposed harvest area in the summer of 2023 (a total of nine field days). This assessment was triggered not only by the department's weighted old growth habitat index (WOGHI) data base, but also because older forest conditions were observed by the lead pre-sales forester in other parts of the proposed harvest area. Due to the complex stand disturbance history, this assessment involved a comprehensive tree coring effort and stand delineation over several days of field effort. It is clear from this work that a comprehensive stand initiating fire hit this area in the mid-1800s. Surviving trees are fire scarred Douglas-fir and western redcedar. The 25.4-acre old growth stand that was delineated between Units 1 and 2, lies within a geologic depression area that appears to have allowed a substantial number of trees to survive this fire event. Similarly, a linear string of these fire scarred trees are present in a deep riparian ravine between Units 2 and 5. Though there are scattered individual trees within the actual proposed harvest area, these are randomly scattered about in low densities and, thus, do not construe an actual stand-defining cohort. Implementation of the department's policies and procedures related to old growth and retention of stand legacies will ensure that the old growth stand is protected from disturbance when adjacent areas are harvested. Individual pre-1850s origin legacy trees within the harvest area have been given the highest priority for retention through the proposal's leave tree strategy. These are either marked as individual leave trees or protected within leave tree areas. In addition, the leave tree strategy also strives to conserve other legacy elements by establishing large leave tree areas around legacy snags (not withstanding L&I hazard concerns) and aggregations of coarse woody debris.

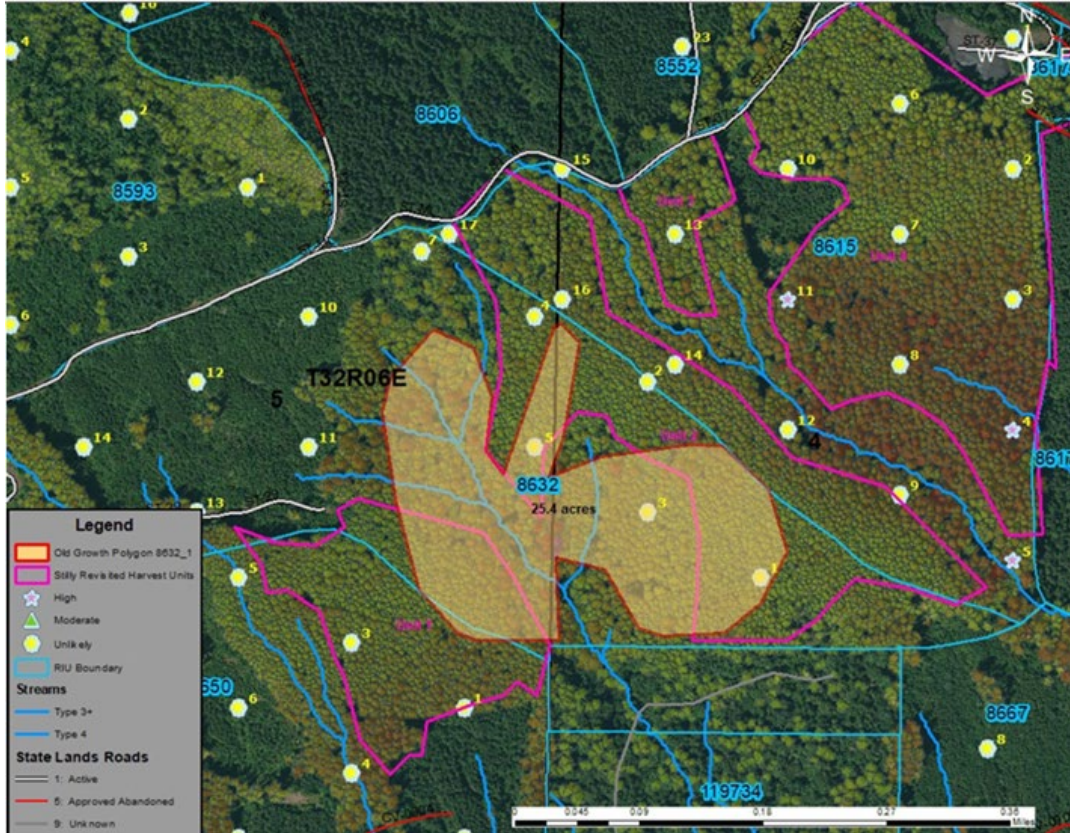
EXPERT & TRIBAL PARTNER REVIEW

Local tribal partners reviewed this proposal during a pre-submittal FPA review. This onsite review was conducted with staff from the Stillaguamish Tribe of Indians and Tulalip Tribes. All parties saw no issues with moving the project forward.

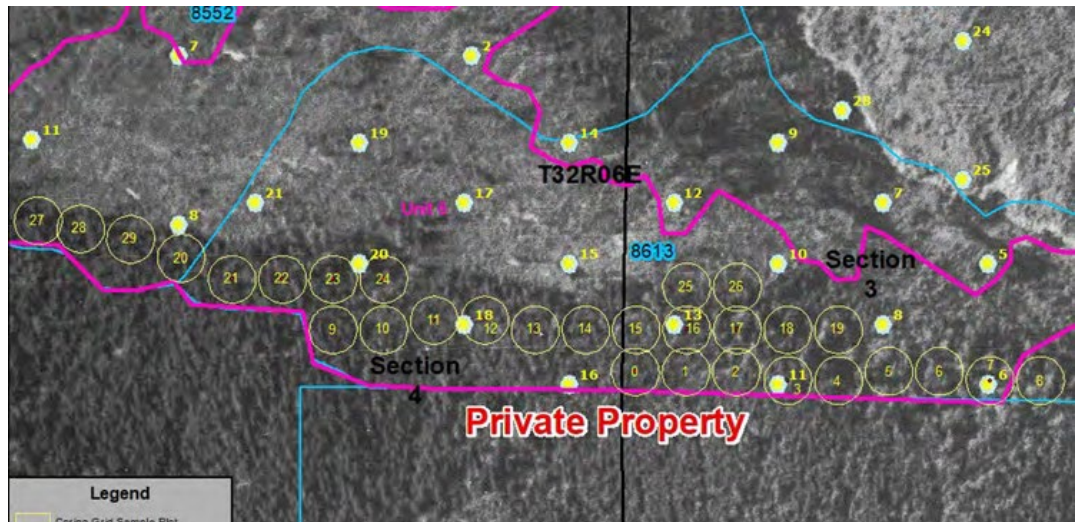
The project has been reviewed by a licensed engineering geologist, who is also a Forest Practices qualified expert. The planned harvest has also been reviewed on

site by our Timber, Fish, and Wildlife Cooperators, including the Department of Ecology, the Department of Fish and Wildlife, representatives from the Stillaguamish Tribe of Indians and representatives from the Tulalip Tribes. All known concerns about slope stability issues that could impact public resources have been addressed and mitigated.

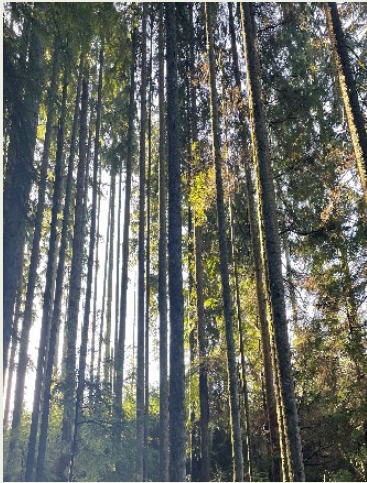
ADDITIONAL MAP INFORMATION



Area of old growth identified during layout. Shows original unit polygons, before the old-growth area was delineated.



Circles are sampling points for tree coring. Ages ranged from late 1850's to 1940's.



Hemlock dominated overstory component with open boles and high stem densities associated with younger forest stages of development.

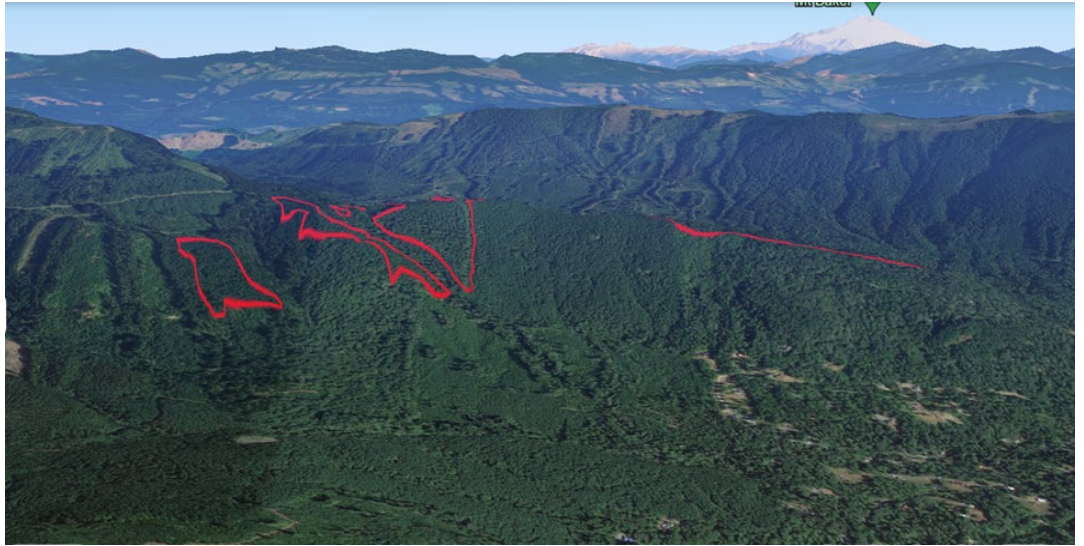


Example of widespread dwarf mistletoe infested hemlock.

LANDSCAPE VIEW



Western hemlock growing from old-growth stump. Cut stumps with springboard notches.



Google earth imagery showing location of the project in comparison to the neighborhood mentioned in SPEA comment letters.

SILVICULTURAL PRESCRIPTION

Species	Stock Type	Trees Per Acre
Western Redcedar	P+1	100
Douglas Fir	1+1	300



Fire scar on old-growth stump, otherwise younger hemlock stand.

ESTIMATED TRUST 01 AND 02 REVENUE BREAKDOWN*

Trust 01 - Snohomish County - TCA 5106** (39.7%)

Taxing District	Total to Fund
County Regular	\$ 14,025.15
County Conservation Futures	\$ 612.25
Fire District 25 EMS	\$ 8,301.20
Hospital Dist 3 Maintenance	\$ 5,627.28
Hospital Dist 3 G.O. Bonds	\$ 10,716.85
Sno-Isle Library	\$ 9,408.80
Road District	\$ 23,503.32
Arlington SD Capital Projects	\$ 24,425.43
Arlington SD Enrichment	\$ 36,168.48
State School 1	\$ 42,511.65
State School 2	\$ 22,811.96
Totals:	\$ 198,112.37

Estimate based on appraisal
**2024 tax rates

Trust 01 - Snohomish County - TCA 5094** (60.3%)

Taxing District	Total to Fund
County Regular	\$ 20,655.74
County Conservation Futures	\$ 901.70
North County Regional Fire EMS	\$ 21,364.18
Hospital Dist 3 Maintenance	\$ 8,287.66
Hospital Dist 3 G.O. Bonds	\$ 15,783.39
Sno-Isle Library	\$ 13,856.94
Road District	\$ 34,614.84
Arlington SD Capital Projects	\$ 35,972.89
Arlington SD Enrichment	\$ 53,267.63
State School 1	\$ 62,609.63
State School 2	\$ 33,596.63
Totals:	\$ 300,911.23

Trust 02 - Snohomish County - TCA 5094**

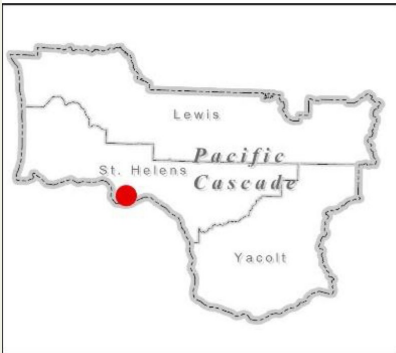
Taxing District	Total to Fund
County Regular	\$ 3,481.40
County Conservation Futures	\$ 151.98
North County Regional Fire EMS	\$ 3,600.80
Hospital Dist 3 Maintenance	\$ 1,396.84
Hospital Dist 3 G.O. Bonds	\$ 2,660.19
Sno-Isle Library	\$ 2,335.50
Road District	\$ 5,834.12
Arlington SD Capital Projects	\$ 6,063.01
Arlington SD Enrichment	\$ 8,977.94
State School 1	\$ 10,552.47
State School 2	\$ 5,662.51
Totals:	\$ 50,716.76



HILARY S. FRANZ
COMMISSIONER OF PUBLIC LANDS

Product Sales and Leasing Division

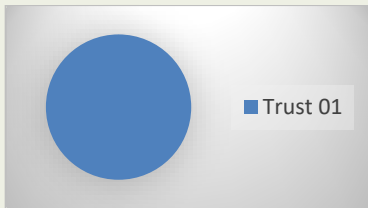
General Location



Sale Specifics

HCP Planning Unit: **Columbia Planning Unit**
Management Block: **Stella**
Sale Type: **Contract Harvest**
Volume: **2,375 mbf**

Trust Distribution



Conservation Facts

Original planned area: **63 ac**
Final harvest area: **42 ac**
Conserved area: **21 ac**
Percent contributed to Long-term forest cover: **33%**

Notable Protected Features

Streams, FP rule-identified landforms

Certifications

Sustainable Forestry Initiative

Lickety Split Sorts

Region: **Pacific Cascade**

County: **Wahkiakum**

Planned BNR meeting: **June 2024**

Planned auction date: **July 25, 2024**

Status of timber sale: FPA approved, NFD signed.

HARVEST UNIT DETAILS

Unit	Acres	Harvest Type	Stand Origin
1	25	VRH	1921
2	17	VRH	1921

DESCRIPTION OF SALE

Unit 1 & Unit 2: are approximately 103 years-old comprised of western hemlock, Douglas-fir, silver fir, western red cedar, and alder. Most of the volume comes from the primary species, western hemlock and has an average DBH of 19.6". The average DBH for the stand comes in at 20".

Leave trees were selected to protect sensitive areas such as wet soils and one Type 5 stream. In most cases leave trees were clumped, capturing trees representing the largest diameter and crown class as well as other characteristics representative of the existing stand. There are few snags and down wood throughout the unit. There is some large down wood left from the last logging entry.

Using the Key to Stand Development Stages in the DNR publication, Identifying Mature and Old Forests in Western Washington, by Bob Van Pelt, (pg. 46 and 47). The harvest area stand development stage has been categorized as Maturation 2 due the western hemlock regeneration that is overhead, (most being 10-20 ft in height) throughout both units, and minor amounts of epicormic branching starting to show. The understory hemlock was released primarily on the edges of both units due to edge effect. The units show signs of being thinned which also helped speed up the understory hemlock regeneration.

SILVICULTURAL PRESCRIPTION

Species	Stock Type	Trees Per Acre
Grand Fir	P+1	50
Douglas Fir	1+1	300
Western Redcedar	P+1	50



Understory western hemlock over-head on the edges



Edge of unit near adjacent harvest unit on private property

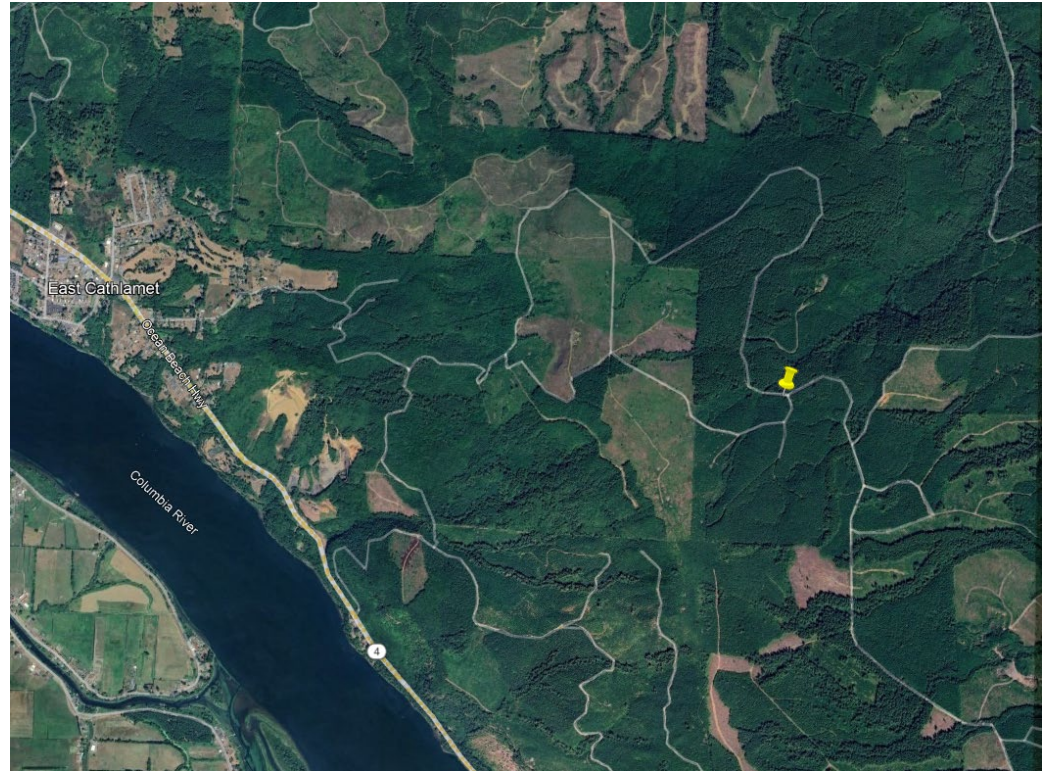


Area of the stand lacking in any understory vegetation.



Cut stump, evidence of first harvest entry.

LANDSCAPE VIEW



ESTIMATED TRUST 01 REVENUE BREAKDOWN*

Trust 01 - Wahkiakum County**

Taxing District	Total to Fund
Wahkiakum County	\$479,051.92
Totals:	\$479,051.92

*Draft estimate based on appraisal

**Note: Wahkiakum County does not further distribute revenue to junior taxing districts.