

**WASHINGTON STATE DEPARTMENT OF NATURAL RESOURCES
HABITAT CONSERVATION PLAN
FY 2002 Annual Report**



Welcome Mat Timber Sale DNR Photo 2002

Annual Report to the Services:
National Marine Fisheries Service
U.S. Fish and Wildlife Service

For the period
July 1, 2001 – June 30, 2002

Habitat Conservation Plan

Annual HCP Report to the Services for FY2002

TABLE OF CONTENTS

1: Introduction

2: NRF and Dispersal Management Areas

- Comparison of Acreage in Designated Areas: Baseline year vs. FY2002
- Silvicultural Activities in Designated Nesting Roosting and Foraging Areas
- Silvicultural Activities in Designated Dispersal Areas

3: Silvicultural Management Activities

- Silvicultural Activities by HCP Planning Units
- Silvicultural Summary

4: Non Timber Activities

- Evaluation of Potential Non-Timber Impacts vs. 1996 Base Year Level

5: Road Management Activities

- Calendar Year 2001 Road Management Activities

6: Land Base Changes (Asset Repositioning)

- Transactions FY 2002
- Effects of Transactions January 1997 to June 2002

7: Monitoring

- Implementation Monitoring
- Effectiveness Monitoring
- Validation Monitoring
- Research
- Implementation Monitoring Pilot Project Summary

APPENDIX A: Silvicultural Activities

1. INTRODUCTION



HABITAT CONSERVATION PLAN

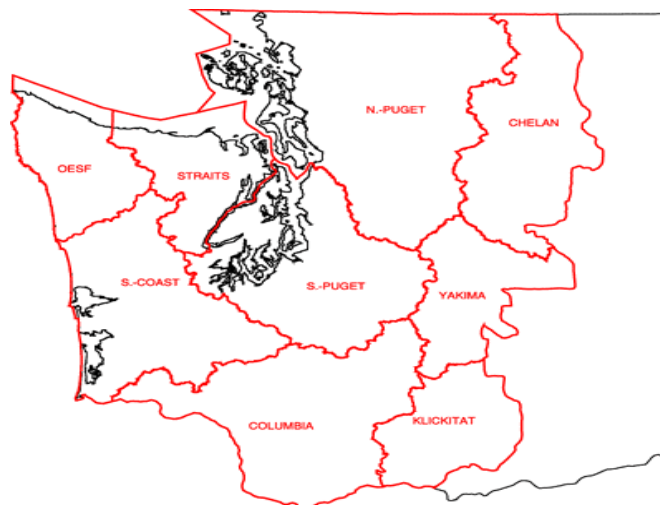
Annual Report to the Services

July 1, 2001 - June 30, 2002
Fiscal Year 2002

INTRODUCTION

The Department of Natural Resource's (DNR) Habitat Conservation Plan (HCP) is a partnership between the DNR and the United States Fish and Wildlife Service and National Marine Fisheries Service (Services), authorized under the Endangered Species Act (ESA), that applies to approximately 1.6 million acres of state trust lands within the range of the northern spotted owl and managed by the DNR. In general, the area includes all DNR trust lands west of the Cascade crest and those on the eastern slopes of the Cascades, from the Canadian border to the Columbia River. The HCP enables DNR to comply with ESA requirements by providing conservation objectives and strategies that provide habitat for listed and unlisted species while providing certainty, flexibility, and stability for the DNR in meeting its trust responsibilities.

HABITAT CONSERVATION PLAN: PLANNING UNITS



Westside HCP planning units: Olympic Experimental State Forest, South Coast, Columbia, South Puget, North Puget and Straits

Eastside HCP planning units: Chelan, Klickitat and Yakima

The Habitat Conservation Plan includes habitat management strategies for ESA listed species and for unique habitats. Some of the major provisions of the HCP are described below.

HCP Conservation Planning Strategies

ESA Habitats Protected: HCP trust land management strategies focus primarily on habitat conservation and enhancement for species listed under the ESA. DNR's habitat management plan identifies specific habitat conservation strategies for the northern spotted owl, marbled murrelet, and for riparian dependent species such as bull trout and salmon. The objectives and strategies of the HCP are designed to conserve and enhance habitats that are scientifically appropriate for the support of multiple species, including those listed under the federal Endangered Species Act, and unlisted species.

Multiple Species Protected: In addition, the conservation strategies developed for the HCP were designed to provide appropriate habitat protection for many other species that are not currently listed as endangered or protected under the ESA. The Department intentionally approached land management in this manner in order to avoid future land management interruptions due to new ESA listings that could disrupt management planning. In addition, the HCP provides specific habitat protection appropriate for numerous state-listed species of concern.

Unique Habitats Protected: Protection of specific habitats includes identification of critical habitats, caves, talus slopes, wetlands, and nesting sites for many species. Future adaptive management changes could modify management practices to address species and habitat needs that are identified through research and monitoring. Therefore, the HCP is also a dynamic, scientifically based management-planning tool.

Highlights:

DNR has begun to focus on a long-term strategy for the marbled murrelet in the Columbia and South Coast planning units where surveys have been completed. Surveys continue in the North Puget, Straits, and OESF planning units. The Straits and OESF surveys are expected to be completed next fiscal year, while surveys in the North Puget planning unit will continue for approximately another three years.

In the eastside planning units, DNR and the Services have been working on forest health issues. Several blocks of DNR lands are infested by forest insects, which have also increased their susceptibility to fire. DNR has been working with the USFWS, NMFS and the Washington Department of Fish and Wildlife (WDFW) to develop an adaptive management strategy that will address these health issues and at the same time address owl habitat issues.

On the monitoring side, DNR began an Implementation Monitoring Pilot Project in the North Puget and South Puget planning units, which covered department trust land management activities. Forty percent of timber management activities were sampled (activities initiated after January 1999 and completed by June 30, 2001). Non-timber management activities conducted during the same time period were 100% sampled. A summary and findings are included in the Monitoring Section of this report. It is expected that the experience and the data collected will help in the formulation and development of an implementation monitoring plan that will have statewide coverage beginning next year.

FY2002 Annual Report Summary: This report covers the third full fiscal year of operations for those forestlands managed under the conservation strategies adopted under the Habitat Conservation Plan.

This Fiscal Year Annual Report will be a little different from previous reports. This is a result of the discussions we had during the fiscal year 2001 Annual Meeting, and also as a result of reexamining the information we provide and formatting it to make it more useful to the Services and the public at large. The report incorporates graphs, which show trends from 1999, when all management activities fully incorporated all the strategies of the HCP. The tables have been reformatted to increase clarity and the non-timber report has been revamped for consistency.

2. NRF & DISPERSAL

Baseline Comparison of Acreage in Designated Areas FY2002 NRF & Dispersal Areas Compared to 1997 Baseline

Designated Management Areas	HCP PLANNING UNITS: ACRES						Totals
	Chelan	Columbia	Klickitat	North Puget	South Puget	Yakima	Total Acres
NRF: Jan 1997	5,647	54,157	20,096	109,409	2,648	13,567	205,524
NRF: June 1999	5,848	53,192	20,943	111,203	2,648	13,567	207,401
NRF: June 2000	5,848	53,192	20,974	111,203	2,648	13,567	207,432
NRF: June 2001	5,851	53,192	20,974	111,363	2,648	13,567	207,595
NRF: June 2002	5,851	53,252	20,974	111,363	2,648	13,567	207,655
Dispersal: Jan 1997	0	38,645	79,095	16,068	71,492	8,332	213,632
Dispersal: June 1999	0	35,234	79,095	15,344	75,302	8,332	213,307
Dispersal: June 2000	0	35,234	79,095	15,344	75,302	8,332	213,307
Dispersal: June 2001	0	35,234	79,095	15,344	75,302	8,332	213,307
Dispersal: June 2002	0	31,890	79,095	15,344	78,179	8,332	212,840

Source: DNR Transactions 11/02

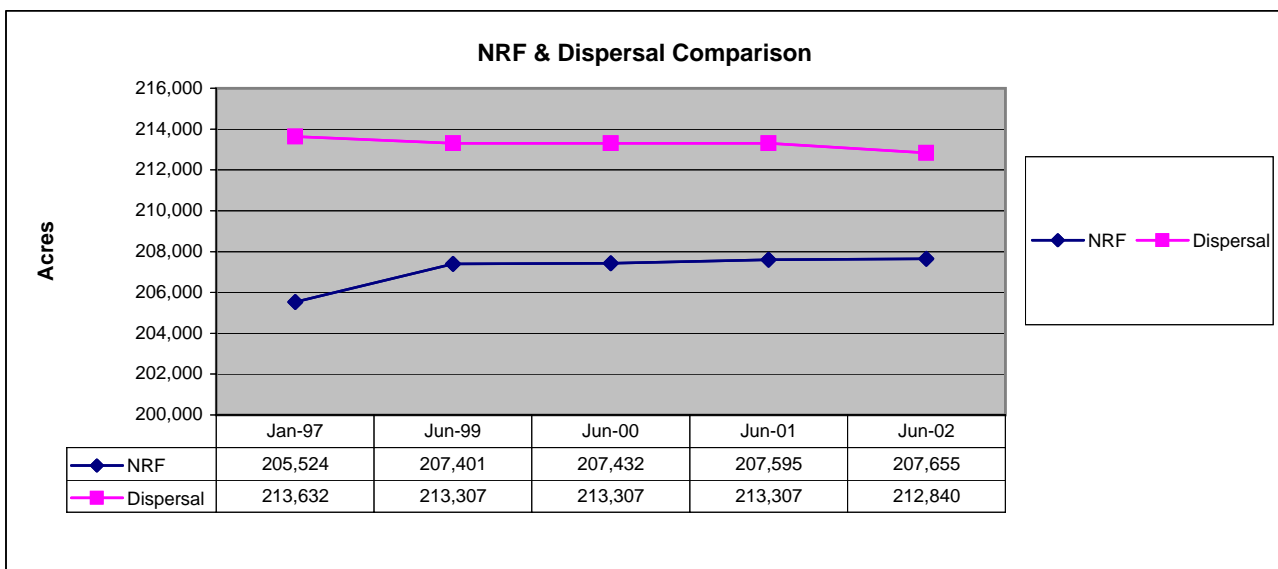
NOTE:

There are no designated NRF or Dispersal management areas in the OESF, Straits or South Coast HCP Planning Units.

Acreage measurements are rounded and may include approximations.

Information is subject to appropriate adjustments and adaptive management changes over time.

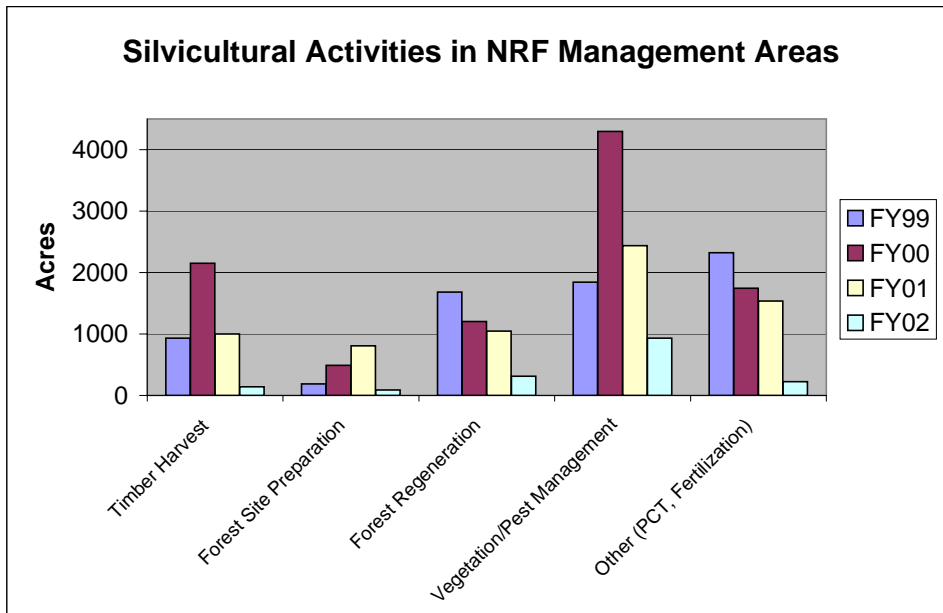
Changes in acreage may be due to management activities, asset repositioning, or updates and refinements in inventory data.



HCP MANAGEMENT OBJECTIVES: NESTING, ROOSTING AND FORAGING AREAS
SILVICULTURAL ACTIVITIES in DESIGNATED NRF MANAGEMENT AREAS
 by
HCP PLANNING UNIT - FY 2002

	Planning Unit						Totals			
	Chelan	Columbia	Klickitat	North Puget	South Puget	Yakima	FY2002 HCP NRF Total	FY2001 HCP NRF Total	FY 2000 HCP NRF Total	FY 1999 HCP NRF Total
Total Designated NRF acres in HCP Unit	5851	53252	20974	111363	2648	13567	207655	207595	207432	207401
% of Total Designated NRF Acreage	2.8%	25.7%	10.1%	53.6%	1.3%	6.5%	100.0%	100.0%	100.00%	100.00%
Harvest & Silvicultural Activity										
Acres										
Timber Harvest										
Regeneration Harvest							0	451	1354	902
Late rotation thinning							0	432	140	0
Phase patch regeneration cut							0	0	6	0
Seed tree intermediate cut							0	0	147	0
Shelterwood removal							0	0	0	28
Selective Product logging							0	0	166	0
Smallwood thinning				130			130	0	0	0
Two-aged management							0	0	6	0
Uneven-aged management				12			12	118	334	0
Timber Harvest Total	0	0	0	142	0	0	142	1001	2153	930
Forest Site Preparation										
Aerial herbicide				90			90	805	326	103
Ground herbicide							0	0	82	82
Ground mechanical							0	0	83	0
Forest Site Preparation Total	0	0	0	90	0	0	90	805	491	185
Forest Regeneration										
Hand Planting	0	95	0	196	0	0	291	1048	1202	1684
Natural Regeneration	0			19			19	0	0	0
Forest Regeneration Totals	0	95	0	215	0	0	310	1048	1202	1684
Vegetation/Pest Management										
Aerial herbicide		163		134			297	818	741	567
Aerial insecticide							0	0	2921	0
Ground herbicide				153			153	702	263	337
Hand cutting (slashing)				480			480	919	370	940
Vegetation/Pest Management Total	0	163	0	767	0	0	930	2439	4295	1844
Other										
Pre-commercial thinning		30		196			226	1537	910	2325
Forest Fertilization							0	0	837	0
Other Totals	0	30	0	196	0	0	226	1537	1747	2325

Source: Planning & Tracking System 10/01



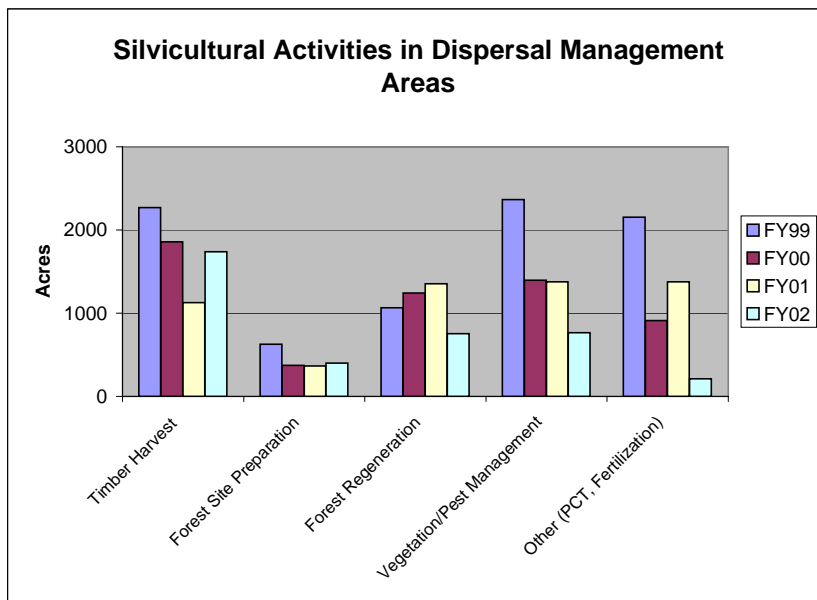
HCP MANAGEMENT OBJECTIVES: SPOTTED OWL DISPERSAL AREAS

SILVICULTURAL ACTIVITIES in DESIGNATED DISPERSAL MANAGEMENT AREAS

by
HCP PLANNING UNIT - FY 2002

	Planning Unit					Totals			
	Columbia FY02	Klickitat FY02	North Puget FY02	South Puget FY02	Yakima FY02	FY2002 HCP Dispersal Total	FY2001 HCP Dispersal Total	FY2000 HCP Dispersal Total	FY1999 HCP Dispersal Total
Total Designated Dispersal acres in HCP Unit	31890	79095	15344	78179	8332	212840	213307	213307	213307
% of Total Designated Dispersal Acreage	15.0%	37.2%	7.2%	36.7%	3.9%	100.0%	100.0%	100.0%	100.0%
Harvest & Silvicultural Activity									
Acres									
Timber Harvest									
Regeneration Harvest	0	184	0	410		594	389	572	953
Late rotation thinning		290				290	7	14	0
Salvage cut						0	0	10	0
Selective product logging						0	93	87	60
Shelterwood intermediate cut						0	0	259	0
Shelterwood removal		78				78	0	0	260
Smallwood thinning	273	337				610	397	84	399
Uneven-aged management		167				167	240	832	597
Timber Harvest Totals	273	1056	0	410	0	1739	1126	1858	2269
Forest Site Preparation									
Aerial herbicide	113					113	294	30	226
Ground herbicide						0	0	89	402
Ground mechanical		33				33	16	194	0
Hand cutting (slashing)		240				240	0	0	0
Pile and burn					14	14	54	62	0
Forest Site Preparation Totals	113	273	0	0	14	400	364	375	628
Forest Regeneration									
Hand planting	48	251	0	363	92	754		1243	1066
Forest Regeneration Totals	48	251	0	363	92	754	1353	1243	1066
Vegetation/Pest Management									
Aerial herbicide			134			134	528	55	912
Aerial insecticide						0	0	465	0
Ground herbicide			57			57	759	100	433
Hand cutting (slashing)	57		138	381		576	89	775	1019
Vegetation/Pest Management Totals	57	0	329	381	0	767	1376	1395	2364
Other									
Pre-commercial thinning			213			213	1376	907	2153
Forest fertilization						0	0	6	0
Other Totals	0	0	213	0	0	213	1376	913	2153

Source: Planning & Tracking System 10/02



3. SILVICULTURAL MANAGEMENT ACTIVITIES

SILVICULTURAL MANAGEMENT ACTIVITIES
by
HCP PLANNING UNIT - FY2002

Harvest & Silvicultural Activity	Acres of Management Activity by Planning Unit										FY02Total Acres	FY01Total Acres	FY00 Total Acres	FY99 Total Acres
	Chelan	Columbia	Klickitat	North Puget	OESF	South Coast	South Puget	Straits	Yakima					
Timber Harvest Type														
Regeneration harvest		1,990	184	2,181	489	1,917	790	551			8,102	9,201	13,549	9,841
Late rotation thinning		461	924		63	384	46				1,878	2,318	862	51
Phased patch regeneration cut						32					32	0	0	0
Salvage cut			77		19		65				161	5	207	301
Seed tree intermediate cut									246		246	165	188	0
Selective product logging						135		303			438	734	1,871	1,177
Shelterwood intermediate cut			341						325		666	151	581	276
Shelterwood removal			78								78	0	0	0
Smallwood thinning		1,158	336	349	943	783					3,569	4,204	2,332	3,111
Temporary retention first cut					192						192	55	36	0
Two aged management											0	67	227	180
Uneven-aged management			167	12					235		414	1,375	2,511	1,939
Harvest Total:	0	3,609	2,107	2,542	1,706	3,251	901	854	806		15,776	18,275	22,364	16,876
Forest Site Preparation														
Aerial herbicide		767		607							1,374	1,934	637	519
Ground herbicide		185				67					252	582	610	669
Ground mechanical		38	33			9			105		185	371	620	0
Hand cutting			240								240	0	0	0
Pile and burn/broadcast burn							2		14		16	416	249	195
Site Prep. Total:	0	990	273	607	0	78	0	119	2,067		3,303	2,116	1,383	
Forest Regeneration														
Hand planting		2,121	657	2,426	908	2,966	1,105	912	493		11,588			
Natural regeneration		25		31	18	94	90				258			
Forest Regeneration Total:	0	2,146	657	2,457	926	3,060	1,195	912	493		11,846	14,316	15,095	13,789
Vegetation Management														
Aerial herbicide		1,430		1,105		1,089	40				3,664	4,182	2,282	3,932
Ground herbicide		256	256	542	148	942		472	55		2,671	5,105	3,343	3,241
Hand cutting		991		2,713	922	2,419	947	1,390			9,382	8,238	12,481	12,931
Seeding grass	254										254	0	0	0
Underburn											0	0	40	0
Vegetation Mgmt. Total:	254	2,677	256	4,360	1,070	4,450	987	1,862	55		15,971	17,525	18,146	20,104
Pest Management														
Animal repellent											0	91	0	N/A
Animal trapping											0	200	0	N/A
Shielding or fencing		40									40	552	0	N/A
Aerial Pesticide											0	0	3,618	
Pest Mgmt. Total:	0	40	0	0	0	0	0	0	0		40	843	3,618	0
Other														
Pre-commercial thinning		387		3,249	1,431	1,048					6,115	14,060	10,907	23,637
Forest fertilization											0	186	2,862	10,187
Tree pruning											0	78	0	91
Other Total:	0	387	0	3,249	1,431	1,048	0	0	0		6,115	14,324	13,769	33,915
Grand Total	254	9,849	3,293	13,215	5,133	11,887	3,083	3,628	1,473		51,815	68,586	75,108	86,067

Source: Planning & Tracking System

SILVICULTURAL MANAGEMENT ACTIVITIES SUMMARY: HARVEST AND SILVICULTURAL ACTIVITIES FY 2002

Harvest & Silvicultural Activity	Acres of Management Activity by Planning Unit										FY2002 Total Acres	FY2001 Total Acres	FY2000 Total Acres	FY1999 Total Acres
	Chelan	Columbia	Klickitat	North Puget	OESF	South Coast	South Puget	Straits	Yakima					
Timber Harvest	0	3,609	2,107	2,542	1,706	3,251	901	854	806		15,776	18,275	22,364	16,876
Site Preparation	0	990	273	607	0	78	0	0	119		2,067	3,303	2,116	1,383
Forest Regeneration	0	2,146	657	2,457	926	3,060	1,195	912	493		11,846	14,316	15,095	13,789
Vegetation Management	254	2,677	256	4,360	1,070	4,450	987	1,862	55		15,971	17,525	18,146	20,104
Pest Management	0	40	0	0	0	0	0	0	0		40	843	3,618	0
Other	0	387	0	3,249	1,431	1,048	0	0	0		6,115	14,324	13,769	33,915
Grand Total	254	9,849	3,293	13,215	5,133	11,887	3,083	3,628	1,473		51,815	68,586	75,108	86,067

Timber Harvest includes regeneration harvest, thinning, selective product logging, salvage cut and others.

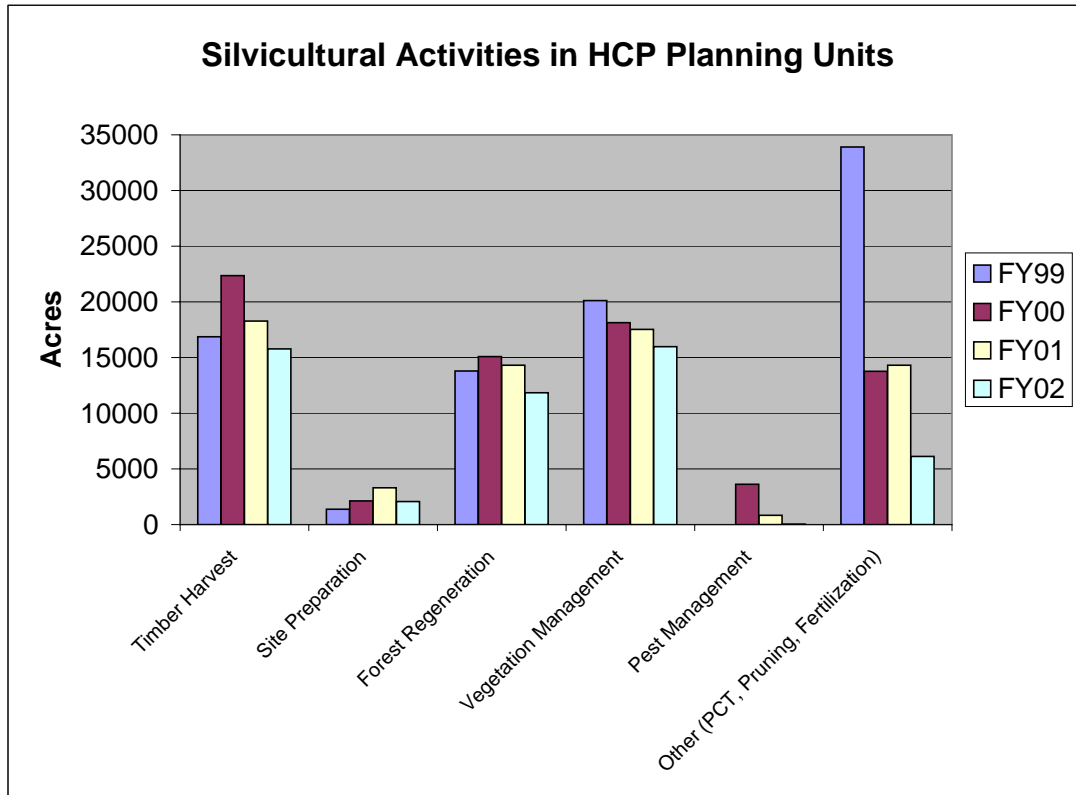
Site Preparation includes herbicide application, ground mechanical and pile and burn.

Forest Regeneration includes hand planting and natural regeneration.

Vegetation Management includes herbicide application and hand cutting.

Pest Management includes animal repellants, trapping and fencing.

Other includes pre-commercial thinning, fertilization and pruning



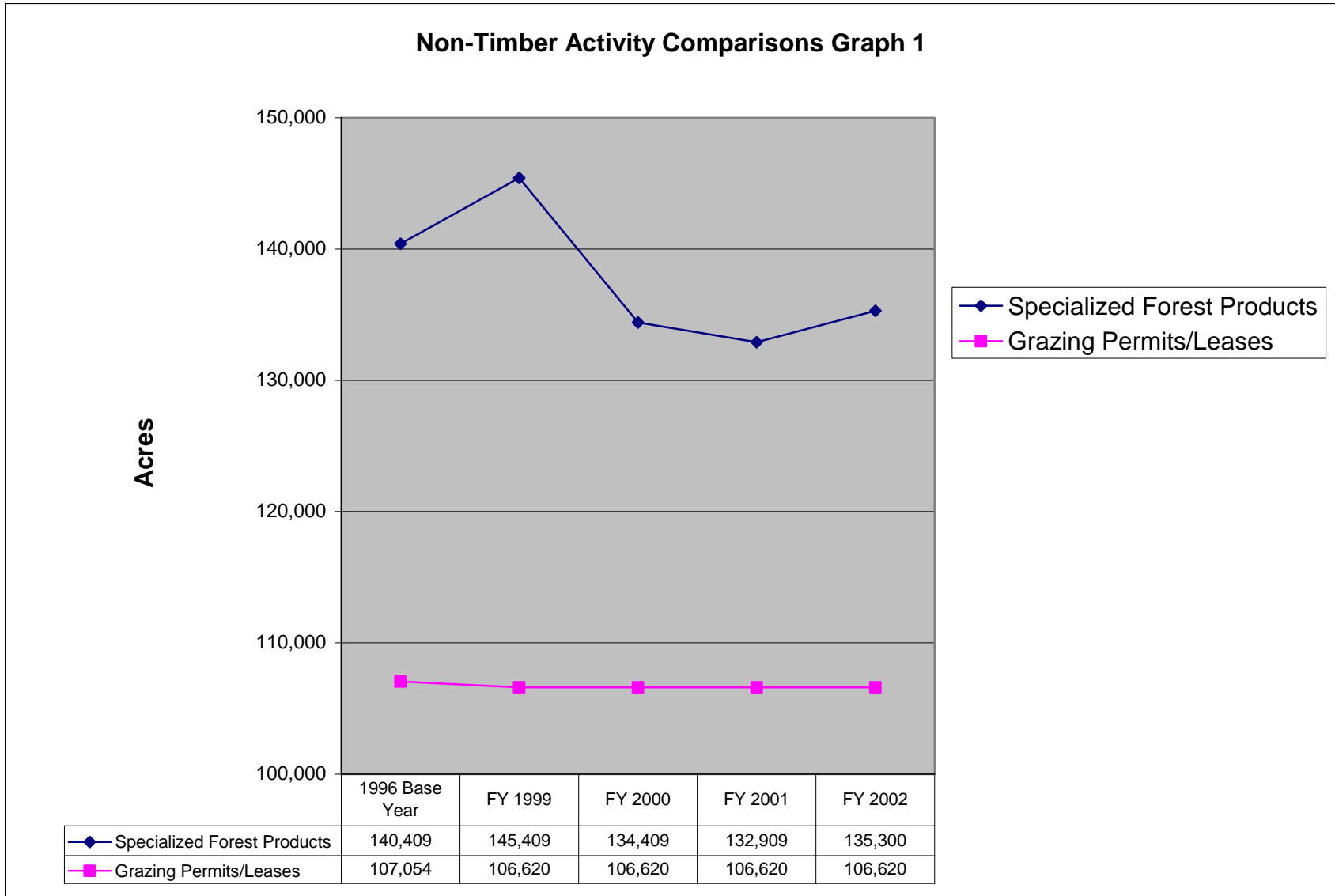
4. NON-TIMBER ACTIVITIES

Evaluation of Potential Non-Timber Impacts vs.1996 Base Year Level

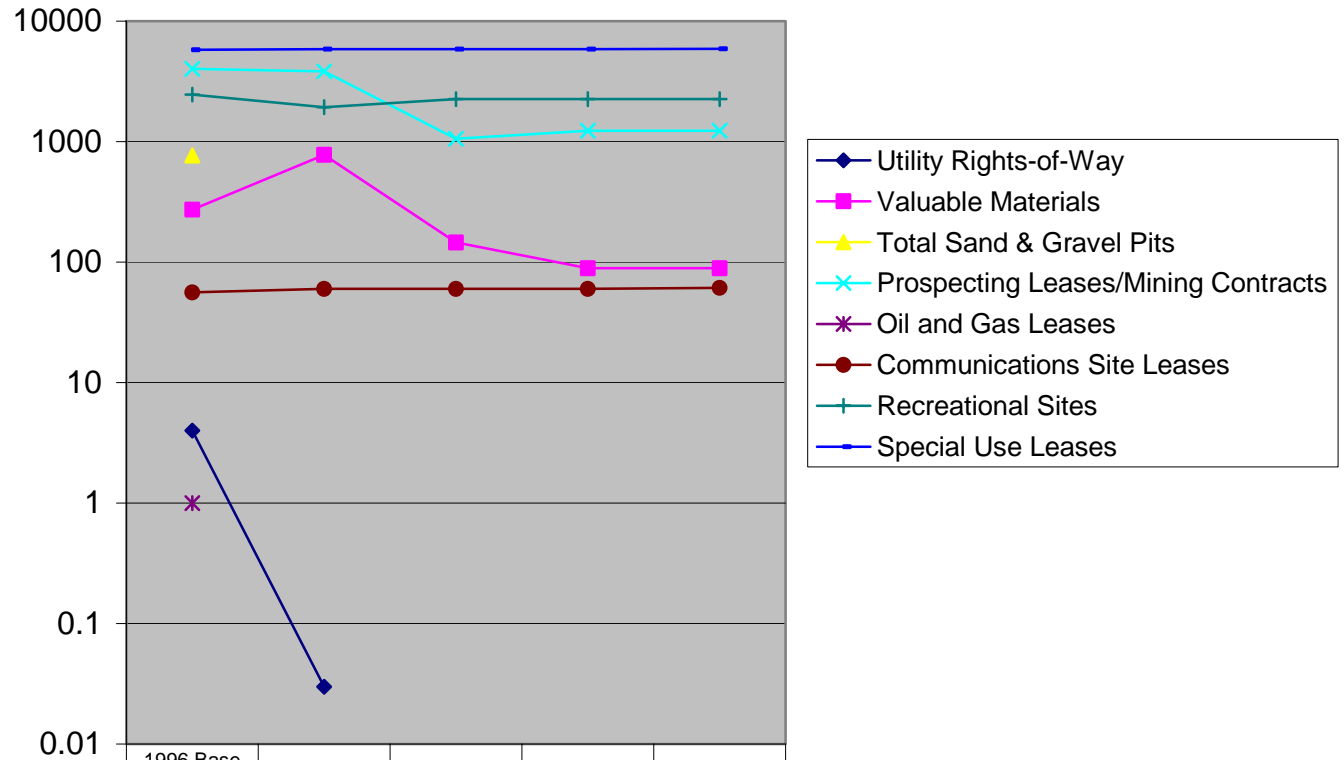
Non-Timber Resources Activity Comparison

	1996 Base Year		FY 2002		FY 2001		FY 2000		FY 1999	
	Number of Leases/Permits/Rights of Way/Sites	Acres	Number of Leases/Permits/Rights of Way/Sites	Acres	Number of Leases/Permits/Rights of Way/Sites	Acres	Number of Leases/Permits/Rights of Way/Sites	Acres	Number of Leases/Permits/Rights of Way/Sites	Acres
The following represent the number and acres of new activities sold, issued or that were active on HCP lands during the reporting period										
Utility Rights-of-Way	9	4	0	0	2	0	4	0	4	0.03
The following represent the total number and acres of activity in force on HCP lands during the reporting period										
Specialized Forest Products										
Western Greens	360	135,000	315	128,000	335	128,000	320	128,000	331	135,000
Christmas Greens	14	5,000	14	7,000	10	4,500	20	6,000	57	10,000
Christmas Trees	8	409	7	300	8	409	8	409	8	409
Misc. (Medicinal, cone and transplant)	20		15		15		15		10	
Specialized Forest Products Totals	402	140,409	351	135,300	368	132,909	363	134,409	406	145,409
Valuable Materials										
Silvicultural Rock, Sand & Gravel Pits (No Commercial Sales)	332	487								
Rock, Sand & Gravel Pits with Commercial Sales	28	281	7	89	7	89	8	90	24	360
Total Sand & Gravel Pits	360	768								
Rock, Sand, Gravel Sales	17	222	0	0	0	0	5	34	24	360
Rock, Sand, Gravel Direct Sales	25	50	0	0	0	0	12	22	34	55.5
Valuable Material Sales Totals	42	272	7	89	7	89	25	146	82	775.5
Prospecting Leases/Mining Contracts										
Leases	4	360	1	180	1	180	0	0	3	249
Contracts	15	3650	7	1056	7	1056	7	1056	14	3570
Prospecting Leases/Mining Contracts Totals	19	4010	8	1236	8	1236	7	1056	17	3819
Oil and Gas Leases										
Leases	43	13196	231	99350	6	2552	6	2552	16	4412
Active Sales	1		0	0	0	0	0	0	0	0
Oil and Gas Leases Totals	1									
Grazing Permits/Leases										
Eastside	25	105,980	25	105,980	25	105,980	25	105,980	25	105,980
Westside	15	1,074	11	640	11	640	11	640	11	640
Grazing Permits/Leases Totals	40	107,054	36	106,620	36	106,620	36	106,620	36	106,620
Communications Site Leases										
Number Sites	56		61		60		60		60	
Number Leases	288		305		302		302		302	
Recreational Sites	119	2456	126	2252	126	2252	126	2252	126	1934
Special Use Leases	90	5792	93	5874	92	5870	92	5870	92	5870

The level of activity for non-timber activities that was present in 1996 (labeled 1996 Base Year) is considered to be a de minimus level of activity. At the 1996 level of these activities, no take, or insignificant take is occurring. The level of impact resulting from these non-timber activities will be reviewed by DNR, the USFWS and NMFS during the annual meeting.



Non-Timber Activity Comparisons Graph 2



	1996 Base Year	FY 1999	FY 2000	FY 2001	FY 2002
◆ Utility Rights-of-Way	4	0.03	0	0	0
■ Valuable Materials	272	775.5	146	89	89
▲ Total Sand & Gravel Pits	768				
✕ Prospecting Leases/Mining Contracts	4010	3819	1056	1236	1236
* Oil and Gas Leases	1				
● Communications Site Leases	56	60	60	60	61
+ Recreational Sites	2456	1934	2252	2252	2252
— Special Use Leases	5792	5870	5870	5870	5874

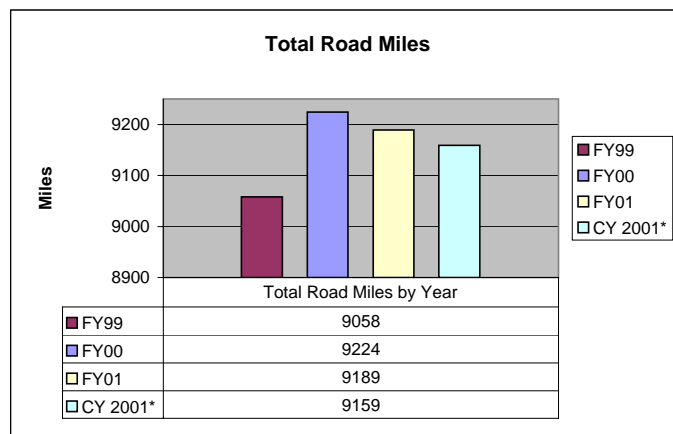
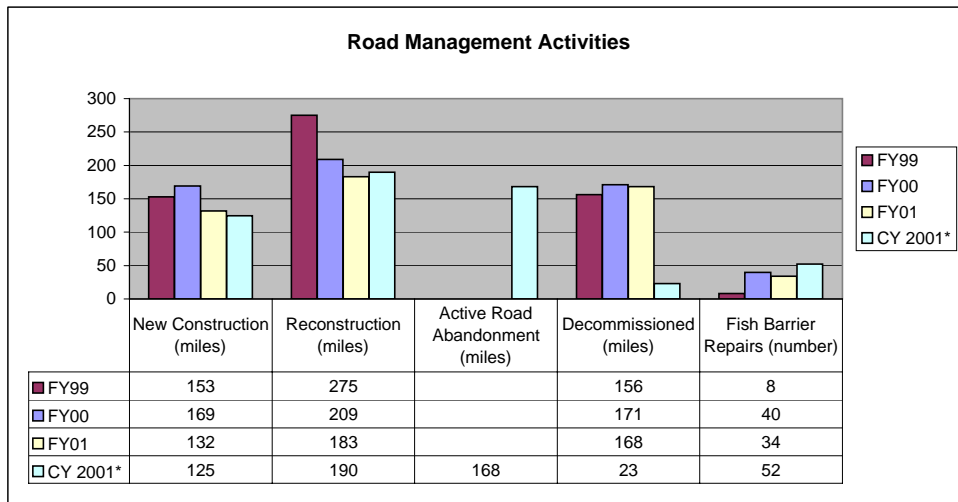
5. ROAD MANAGEMENT ACTIVITIES

**Calendar Year 2001
HCP ROAD MANAGEMENT ACTIVITIES**

FY 2002 HCP Annual Report

	HCP Planning Units										Totals		
	Chelan	Columbia	Klickitat	North Puget	OESF	South Coast	South Puget	Straits	Yakima	CY 2001*	FY01 Total	FY00 Total	FY99 Total
Total Road Miles	93	1524	665	2027	1534	1416	855	550	495	9159	9189	9224	9058
CONSTRUCTION (miles)	0	25	2	42	2	26	5	10	13	125	132	169	153
RECONSTRUCTION (miles)	0	35	7	59	9	38	12	13	17	190	183	209	275
ACTIVE FOREST ROADS ABANDONED (miles)	2	35	4	56	0	55	11	5	0	168	N/A		
DECOMMISSIONED (miles)	0	0	0	9	6	3	1	4	0	23	168	171	156
FISH BARRIERS REMOVED (number)	0	5	2	3	1	32	5	3	1	52	34	40	8
PERCENT OF RMAP RESPONSIBILITY ASSESSED	2%	22%	26%	31%	25%	20%	54%	20%	24%	25%	N/A	N/A	N/A

Source: Road Data Management System (RDMS)



*Calendar year 2001 data includes data from the last 6 months of FY 2001

6. LAND BASE CHANGES

Effects of Transactions on Permit Lands - July 2001 to June 2002

Nov. 8, 2002

Activity		Planning Unit						Totals
		Columbia	Klickitat	N Puget	S Coast	S Puget	Yakima	
	Total Acres Acquired	100	10	357.14	411.91	3414.69	39.15	4332.89
	Total Acres Disposed	-3713.66	0	0	-3.1	-519.49	0	-4236.25
	Net Change	-3613.66	10	357.14	408.81	2895.2	39.15	96.64
Owl Habitat	Designated Dispersal	0	0	0	0	2876.97	0	2876.97
Acquired	Existing Dispersal (41+)	0	0	0	0	1103.36	0	1103.36
	Designated NRF	60	0	0	0	0	0	60
	Existing NRF (71+)	0	0	0	0	0	0	0
	OESF	0	0	0	0	0	0	0
	No Role	40	10	357.14	411.91	537.72	39.15	1395.92
Owl Habitat	Designated Dispersal	-3343.92	0	0	0	0	0	-3343.92
Disposed	Existing Dispersal (41+)	-1152	0	0	0	0	0	-1152
	Designated NRF	0	0	0	0	0	0	0
	Existing NRF (71+)	0	0	0	0	0	0	0
	OESF	0	0	0	0	0	0	0
	No Role	-369.74	0	0	-3.1	-519.49	0	-892.33
Other	Murrelet	0	0	0	0	0	0	0
Habitats	Oregon silverspot butterfly	0	0	0	0	0	0	0
Acquired	Aleutian Canadian goose	0	0	0	0	0	0	0
	Bald eagle	0	0	0	0	0	0	0
	Peregrine falcon	0	0	0	0	0	0	0
	Gray wolf	0	0	0	0	0	0	0
	Grizzly bear	0	0	0	0	0	0	0
	Columbia white-tailed deer	0	0	0	0	0	0	0
	Talus and cliffs	0	0	0	0	0	0	0
	Meadows	0	0	0	0	0	0	0
Other	Murrelet	0	0	0	0	0	0	0
Habitats	Oregon silverspot butterfly	0	0	0	0	0	0	0
Disposed	Aleutian Canadian goose	0	0	0	0	0	0	0
	Bald eagle	-249.74	0	0	0	0	0	-249.74
	Peregrine falcon	0	0	0	0	0	0	0
	Gray wolf	0	0	0	0	0	0	0
	Grizzly bear	0	0	0	0	0	0	0
	Columbia white-tailed deer	0	0	0	0	0	0	0
	Talus and cliffs	0	0	0	0	0	0	0
	Meadows	0	0	0	0	0	0	0
Riparian:								
Stream Miles	Stream type 1	0.49	0	0.29	0.94	0.95	0	2.67
Acquired	Stream type 2	0	0	0	0.91	0	0	0.91
	Stream type 3	0	0	0.19	1.29	3.33	0	4.81
	Stream type 4	0.02	0	0.7	0.63	4.21	0	5.56
	Stream type 5	1.54	0	3.09	0.82	15.83	0	21.28
	Stream type 9	0	0.08	0.71	3.68	0.09	0.25	4.81
	Total Miles	2.05	0.08	4.98	8.27	24.41	0.25	40.04
ROS/Slopes	Rain on Snow	26.22	0	0	0	1109.46	3.43	1139.11
Acquired	Unstable Slopes	0	0	18	0	0	0	18

Activity		Planning Unit					Totals	
		Columbia	Klickitat	N Puget	S Coast	S Puget		Yakima
<i>Riparian:</i>								
<i>Stream Miles</i>	<i>Stream Type 1</i>	-1.01	0	0	0	-0.5	0	-1.51
<i>Disposed</i>	<i>Stream type 2</i>	0.00	0	0	0	0	0	0
	<i>Stream type 3</i>	-13.04	0	0	0	-0.02	0	-13.06
	<i>Stream type 4</i>	-2.27	0	0	0	0	0	-2.27
	<i>Stream type 5</i>	-21.57	0	0	0	-0.18	0	-21.75
	<i>Stream type 9</i>	-1.25	0	0	0	0	0	-1.25
	Total Miles	-39.14	0	0	0	-0.7	0	-39.84
<i>ROS/Slopes</i>	<i>Rain on Snow</i>	-1455.25	0	0	0	0	0	-1455.25
<i>Disposed</i>	<i>Unstable Slopes</i>	0.00	0	0	0	0	0	0.00
<i>Zones:</i>	<i>Interior Douglas Fir</i>	0	10	0	0	0	39.15	49.15
<i>Acquired</i>	<i>Puget Sound Douglas Fir</i>	0	0	36.71	0	536.48	0	573.19
	<i>Silver Fir</i>	0	0	170.73	0	320	0	490.73
	<i>Sitka Spruce</i>	0	0	0	111.91	0	0	111.91
	<i>Western Hemlock</i>	100	0	149.7	300	2558.2	0	3107.9
	Total Acres	100	10	357.14	411.91	3414.68	39.15	4332.88
<i>Zones:</i>	<i>Puget Sound Douglas Fir</i>	0	0	0	0	-0.39	0	-0.39
<i>Disposed</i>	<i>Silver Fir</i>	-640	0	0	0	0	0	-640
	<i>Sitka Spruce</i>	0	0	0	0	0	0	0
	<i>Western Hemlock</i>	-3073.64	0	-3.1	-519.1	0	0	-3595.84
	Total Acres	-3713.64	0	-3.1	-519.1	-0.39	0	-4236.23
<i>Age class</i>	<i>Open 0-10</i>	0	0	145.39	193	1026.29	0	1364.68
<i>Acquired</i>	<i>Regeneration 11-20</i>	0	0	0	82.22	276.32	0	358.54
	<i>Pole 21-40</i>	91	0	6	0	848	0	945
	<i>Closed 41-70</i>	0	0	171	6	989.11	0	1166.11
	<i>Complex 71-100</i>	9	0	0	0	42.38	0	51.38
	<i>Complex 101-150</i>	0	0	0	0	97.5	12.5	110
	<i>Functional 150+</i>	0	0	0	0	0	0	0
	<i>Non-Forest Land</i>	0	10	34.42	130.69	135.09	27	337.2
	Total Acres	100	10	356.81	411.91	3414.69	39.5	4332.91
<i>Age class</i>	<i>Open 0-10</i>	-771.8	0	0	-3.1	-30.49	0	-805.39
<i>Disposed</i>	<i>Regeneration 11-20</i>	-636.12	0	0	0	-8.61	0	-644.73
	<i>Pole 21-40</i>	-756.74	0	0	0	0	0	-756.74
	<i>Closed 41-70</i>	-1163	0	0	0	-57	0	-1220
	<i>Complex 71-100</i>	-159	0	0	0	-400	0	-559
	<i>Complex 101-150</i>	-42	0	0	0	0	0	-42
	<i>Functional 150+</i>	0	0	0	0	0	0	0
	<i>Non-Forest Land</i>	-185	0	0	0	-23.39	0	-208.39
	Total Acres	-3713.66	0	0	-3.1	-519.49	0	-4236.25
<i>Age class</i>	<i>Open 0-10</i>							
<i>by Zone:</i>	<i>--Western Hemlock</i>	-771.8	0	0	0	-30.49	0	-802.29
<i>Disposed</i>	<i>Regeneration 11-20</i>							
	<i>--Western Hemlock</i>	-541.12	0	0	0	-8.61	0	-549.73
	<i>--Silver Fir</i>	-95	0	0	0	0	0	-95
	<i>Pole 21-40</i>							
	<i>--Western Hemlock</i>	-236.74	0	0	0	0	0	-236.74
	<i>--Silver Fir</i>	-520	0	0	0	0	0	-520
	<i>Closed 41-70</i>							
	<i>--Western Hemlock</i>	-1163	0	0	0	-57	0	-1220
	<i>Complex 71-100</i>							
	<i>--Western Hemlock</i>	-159	0	0	0	-400	0	-559
	<i>Complex 101-150</i>							
	<i>--Western Hemlock</i>	-36	0	0	0	0	0	-36
	<i>--Silver Fir</i>	-6	0	0	0	0	0	-6
	Total Acres	-3528.66	0	0	0	-496.1	0	-4024.76

Effects of Transactions of Permit Lands - January 1997 to June 2002

Information subject to corrections and additions over time

Activity	Planning Unit									Totals
	Chelan	Columbia	Klickitat	N Puget [1]	OESF	S Coast	S Puget	Straits	Yakima	
Total Acres Acquired	403.57	5,545.50	887.95	11,220.92	3,180.90	3,176.81	10,244.57	1,062.72	39.15	35,762.09
Total Acres Disposed	-	(9,669.01)	-	(3,456.48)	(838.24)	(3,165.91)	(4,716.40)	-	-	(21,846.04)
Net Change - Acres	403.57	(4,123.51)	887.95	7,764.44	2,342.66	10.90	5,528.17	1,062.72	39.15	13,916.05
Owl Habitat Acquired	-	-	-	10.00	-	-	7,346.73	-	-	7,356.73
Existing Dispersal (41+)	-	-	-	10.00	-	-	3,279.46	-	-	3,289.46
Designated NRF	203.57	380.00	877.95	2,076.24	-	-	-	-	-	3,537.76
Existing NRF (71+)	-	17.39	126.00	-	-	-	-	-	-	143.39
OESF	-	-	-	-	3,180.90	-	-	-	-	3,180.90
No Role	200.00	5,165.50	10.00	9,134.68	-	3,176.81	2,897.84	1,062.72	39.15	21,686.70
Owl Habitat Disposed	-	(6,754.57)	-	(734.36)	-	(560.00)	(100.00)	-	-	(8,148.93)
Existing Dispersal (41+)	-	(2,325.82)	-	(109.00)	-	(38.70)	(93.20)	-	-	(2,566.72)
Designated NRF	-	(1,284.53)	-	(121.55)	-	-	-	-	-	(1,406.08)
Existing NRF (71+)	-	(389.49)	-	-	-	-	-	-	-	(389.49)
OESF	-	-	-	-	(838.21)	-	-	-	-	(838.21)
No Role	-	(1,629.91)	-	(2,600.57)	(0.03)	(2,605.91)	(4,616.40)	-	-	(11,452.82)
Other Habitats Acquired	-	-	-	-	-	-	-	-	-	-
Murrelet	-	-	-	-	-	-	-	-	-	-
Oregon silverspot butterfly	-	-	-	-	-	-	-	-	-	-
Aleutian Canadian goose	-	-	-	-	-	-	-	-	-	-
Bald eagle	-	-	-	20.00	-	-	-	-	-	20.00
Peregrine falcon	-	-	-	-	-	-	-	-	-	-
Gray wolf	-	-	-	-	-	-	-	-	-	-
Grizzly bear	-	-	-	-	-	-	-	-	-	-
Columbia white-tailed deer	-	-	-	-	-	-	-	-	-	-
Talus and cliffs	-	-	-	325.00	-	-	-	-	-	325.00
Meadows	102.50	-	70.45	-	-	-	-	-	-	172.95
Other Habitats Disposed	-	(567.61)	-	-	-	-	(279.91)	-	-	(847.52)
Murrelet	-	-	-	-	-	-	-	-	-	-
Oregon silverspot butterfly	-	-	-	-	-	-	-	-	-	-
Aleutian Canadian goose	-	-	-	-	-	-	-	-	-	-
Bald eagle	-	-	-	(5.00)	(49.42)	-	-	-	-	(54.42)
Peregrine falcon	-	-	-	-	-	-	-	-	-	-
Gray wolf	-	-	-	-	-	-	-	-	-	-
Grizzly bear	-	-	-	-	-	-	-	-	-	-
Columbia white-tailed deer	-	-	-	-	-	-	-	-	-	-
Talus and cliffs	-	(87.00)	-	(20.00)	-	-	-	-	-	(107.00)
Meadows	-	(82.00)	-	-	-	-	-	-	-	(82.00)
Activity	Chelan	Columbia	Klickitat	N Puget	OESF	S Coast	S Puget	Straits	Yakima	Totals
Riparian: Stream Miles Acquired	-	2.41	3.12	11.96	0.32	7.05	2.21	-	-	27.07
Stream type 1	-	-	1.12	0.18	1.02	0.91	0.03	-	-	3.26
Stream type 2	-	8.24	1.01	11.79	7.24	5.99	8.85	-	-	43.12
Stream type 3	0.96	9.93	-	13.38	2.25	5.06	10.33	0.31	-	42.22
Stream type 4	2.47	36.03	0.26	28.50	8.99	7.06	36.14	4.21	-	123.66
Stream type 5	4.47	39.18	2.12	22.88	4.85	15.40	12.68	2.39	0.25	104.22
Stream type 9	-	-	-	-	-	-	-	-	-	-
Total Miles	7.90	95.79	7.63	88.69	24.67	41.47	70.24	6.91	0.25	343.55
ROS/Slopes Acquired	-	1,065.10	786.95	2,203.10	4.47	-	3,165.84	801.15	3.43	8,030.04
Rain on Snow	23.10	809.40	-	959.68	1,137.10	154.55	99.99	828.14	-	4,011.96
Unstable Slopes	-	-	-	-	-	-	-	-	-	-
Stream Miles Disposed	-	1.32	-	3.20	0.30	0.14	0.69	-	-	5.65
Stream type 1	-	-	-	0.33	-	1.97	-	-	-	2.30
Stream type 2	-	15.78	-	11.45	2.18	2.68	199.66	-	-	231.75
Stream type 3	-	9.23	-	0.44	1.71	3.89	2.58	-	-	17.85
Stream type 4	-	49.42	-	3.05	5.15	12.28	3.21	-	-	73.11
Stream type 5	-	31.06	-	1.20	-	13.80	7.51	-	-	53.57
Stream type 9	-	-	-	-	-	-	-	-	-	-
Total Miles	-	106.81	-	19.67	9.34	34.76	213.65	-	-	384.23
ROS/Slopes Disposed	-	3,611.18	-	536.98	78.46	20.46	161.66	-	-	4,408.74
Rain on Snow	-	1,127.60	-	378.10	14.09	31.50	49.25	-	-	1,600.54
Unstable Slopes	-	-	-	-	-	-	-	-	-	-
Zones: Interior Douglas Fir Acquired	401.00	-	887.95	-	-	-	-	-	39.15	1,328.10
Olympic Douglas Fir	-	-	-	-	-	-	-	161.45	-	161.45
Puget Sound Douglas Fir	-	-	-	413.69	-	-	1,660.60	0.75	-	2,075.04
Silver Fir	-	-	-	6,003.30	-	9.11	320.00	-	-	6,332.41
Sitka Spruce	-	-	-	-	920.26	849.79	-	-	-	1,770.05
Western Hemlock	-	5,545.50	-	4,643.90	2,260.64	2,317.90	8,264.00	900.52	-	23,932.46
Subalpine Fir	2.57	-	-	-	-	-	-	-	-	2.57
Mt. Hemlock	-	-	-	160.00	-	-	-	-	-	160.00
Total Acres	403.57	5,545.50	887.95	11,220.89	3,180.90	3,176.80	10,244.60	1,062.72	39.15	35,762.08
Zones: Interior Douglas Fir Disposed	-	-	-	-	-	-	-	-	-	-
Mt Hemlock	-	-	-	(214.77)	-	-	-	-	-	(214.77)
Puget Sound Douglas Fir	-	-	-	(573.49)	-	(108.56)	(2,858.30)	-	-	(3,540.35)
Silver Fir	-	(1,285.30)	-	(410.75)	-	-	-	-	-	(1,696.05)
Sitka Spruce	-	-	-	-	(54.21)	(1,120.00)	-	-	-	(1,174.21)
Western Hemlock	-	(8,383.74)	-	(2,111.11)	(784.03)	(1,937.40)	(1,797.10)	-	-	(15,013.38)
Woodland/Prairie	-	-	-	(146.36)	-	-	(61.00)	-	-	(207.36)
Total Acres	-	(9,669.04)	-	(3,456.48)	(838.24)	(3,165.96)	(4,716.40)	-	-	(21,846.12)

Activity		Planning Unit									Totals
		Chelan	Columbia	Klickitat	N Puget	OESF	S Coast	S Puget	Straits	Yakima	
Age class	Open 0-10	97.50	3,744.50	144.45	2,006.65	216.28	1,318.13	2,699.94	161.45	-	10,388.90
Acquired	Regeneration 11-20	-	2.00	-	2,357.57	509.80	504.01	1,224.41	-	-	4,597.79
	Pole 21-40	0.50	355.00	-	807.56	1,541.21	172.02	1,921.05	-	-	4,797.34
	Closed 41-70	2.57	1,364.34	49.00	4,575.58	633.50	771.67	3,232.24	875.72	-	11,504.62
	Complex 71-100	-	28.39	136.00	165.57	113.30	-	597.49	-	-	1,038.75
	Complex 101-150	-	-	10.00	-	-	-	97.50	-	12.15	119.65
	Functional 150+	-	-	-	7.00	-	-	-	-	-	7.00
	Non-Forest Land	303.00	53.27	548.50	1,300.99	166.81	410.98	472.12	25.55	27.00	3,308.22
	Total Acres	403.57	5,545.50	887.95	11,220.92	3,180.90	3,176.81	10,244.75	1,062.72	39.15	35,762.27
Age class	Open 0-10	-	2,048.85	-	560.01	42.21	875.55	387.19	-	-	3,913.81
Disposed	Regeneration 11-20	-	1,307.22	-	140.02	-	812.27	10.61	-	-	2,270.12
	Pole 21-40	-	2,027.53	-	511.07	207.35	318.51	261.40	-	-	3,325.86
	Closed 41-70	-	2,474.12	-	1,699.89	413.00	852.33	1,554.01	-	-	6,993.35
	Complex 71-100	-	443.20	-	281.36	140.95	33.00	1,371.78	-	-	2,270.29
	Complex 101-150	-	689.71	-	5.00	-	141.80	155.00	-	-	991.51
	Functional 150+	-	168.99	-	59.00	-	-	588.00	-	-	815.99
	Non-Forest Land	-	509.37	-	200.13	33.70	131.89	390.40	-	-	1,265.49
	Total Acres	-	9,668.99	-	3,456.48	837.21	3,165.35	4,718.39	-	-	21,846.42
Age class	Open 0-10	-	-	-	(175.14)	-	(7.00)	(352.50)	-	-	(534.64)
by Zone:	--PS Douglas Fir	-	-	-	-	-	-	-	-	-	(123.00)
Disposed	--Silver Fir	-	(123.00)	-	-	-	-	-	-	-	(42.21)
	--Sitka Spruce	-	-	-	-	(42.21)	-	-	-	-	(3,213.96)
	--Western Hemlock	-	(1,925.85)	-	(384.87)	-	(868.55)	(34.69)	-	-	(1,705.42)
	Regeneration 11-20	-	-	-	-	-	-	2.00	-	-	2.00
	--PS Douglas Fir	-	(223.70)	-	-	-	-	-	-	-	(223.70)
	--Silver Fir	-	-	-	-	-	(339.00)	-	-	-	(339.00)
	--Sitka Spruce	-	-	-	-	-	(473.27)	(8.61)	-	-	(1,705.42)
	--Western Hemlock	-	(1,083.52)	-	(140.02)	-	-	-	-	-	(258.36)
	Pole 21-40	-	-	-	(28.36)	-	-	(230.00)	-	-	(520.00)
	--PS Douglas Fir	-	-	-	(28.36)	-	-	(230.00)	-	-	(169.20)
	--Silver Fir	-	(520.00)	-	-	-	(169.20)	-	-	-	(169.20)
	--Sitka Spruce	-	-	-	-	-	(149.31)	(31.40)	-	-	(2,378.30)
	--Western Hemlock	-	(1,507.53)	-	(482.71)	(207.35)	(149.31)	(31.40)	-	-	(158.00)
	Closed 41-70	-	-	-	(158.00)	-	-	-	-	-	(158.00)
	--Mt Hemlock	-	-	-	(158.00)	-	-	-	-	-	(1,172.65)
	--PS Douglas Fir	-	-	-	(173.43)	-	(83.00)	(916.22)	-	-	(397.00)
	--Silver Fir	-	-	-	(397.00)	-	-	-	-	-	(596.30)
	--Sitka Spruce	-	-	-	-	-	(596.30)	-	-	-	(4,628.40)
	--Western Hemlock	-	(2,474.12)	-	(971.46)	(413.00)	(173.03)	(596.79)	-	-	(43.00)
	--Woodland Prairie	-	-	-	-	-	-	(43.00)	-	-	

Notes:

[1] "Acres Acquired" under North Puget has been recalculated due to unintentional inclusion of some properties in prior reports.

7. MONITORING

HCP MONITORING

The Washington Department of Natural Resources (DNR), in partnership with the USFWS and NMFS, developed a multi-species Habitat Conservation Plan (HCP) to comply with the federal Endangered Species Act for management of state trust lands (DNR 1997). The HCP includes several main conservation strategies for the conservation of the northern spotted owl, marbled murrelet, western Washington runs of several salmonids and other federal and state candidate species. In addition seven other upland species listed by the federal government as endangered or threatened were covered by the incidental take permit. The plan covers approximately 1.6 million acres of state trust lands within the range of the northern spotted owl. The DNR has also agreed to monitor this HCP on DNR-managed lands according to the following objectives for all planning units:

- To determine whether the HCP conservation strategies are implemented as written; and
- To determine whether implementation of the conservation strategies results in anticipated habitat conditions.

These two objectives can be referred to as implementation and effectiveness monitoring, respectively (U.S. Forest Service et al. 1994).

There is a third monitoring objective, referred to as validation monitoring, which will be utilized on DNR-managed lands in the Olympic Experimental State Forest (OESF) Planning Unit. Validation Monitoring will be used to evaluate cause-and-effect relationships between habitat conditions resulting from implementation of the conservation strategies and the animal populations these strategies are intended to benefit.

Implementation Monitoring

An HCP Monitoring/Scientific Section was developed in 2001 that will provide a centralized approach to Implementation Monitoring and a systematic, consistent process for reporting HCP compliance to the Services. The department decided to utilize a pilot project for the initial Implementation Monitoring of the HCP, and to conduct the pilot project in the North Puget and South Puget planning units. A pilot project will allow us to:

- Determine approximate costs of doing implementation monitoring in the eight HCP planning units plus the OESF. This will help in the development of future budgets for implementation monitoring.
- Test and refine some of the technical aspects of the implementation monitoring
- Test and refine methods of measurements
- Revise the Implementation Monitoring Plan
- Identify any possible logistical problems of Implementation Monitoring and its' reporting
- Help determine adequate sampling size to achieve desired confidence intervals

The pilot project was conducted during the months of June through October 2002 and provides information necessary for the development of a comprehensive Implementation

Monitoring Plan, which the department plans to implement in all planning units beginning in July 2003.

Effectiveness Monitoring, Validation Monitoring, and Research

In fiscal year 2002 the following activities dominated HCP research and monitoring:

- Research to support the development of the marbled murrelet long term conservation strategy including the DNR habitat relationship study, Predation research and support of WDFW at-sea surveys.
- Completion of review drafts of key effectiveness monitoring plans and the delivery of a draft to the Federal Services.
- Establishment of pilot monitoring for Spotted Owl Effectiveness
- Establishment of Type 5 stream research to support the development of a long-term conservation plan for seasonal streams.

Limited pilot studies are being conducted to test the feasibility of proposed monitoring methods and other analysis that will allow the revision of the specific study plans. Completion of the marbled murrelet habitat relationship study and development of the murrelet conservation strategy is a priority.

The following describes the progress on FY2002 research related to priorities identified in the HCP.

Riparian

Pilot Monitoring of Windthrow in Riparian Areas

This project was initiated in 1998 and the information gathered has been used in the redesigning of the windthrow monitoring approach and will help in the design of future experimental tests of wind buffers. Our current monitoring is focused on the OESF planning unit to quantify the historic windthrow extent in unmanaged RMZ's. To this end, we plan to establish experimental harvests to test wind buffer effectiveness. We are using a chronosequence of existing aerial photographs to measure wind impacts of canopy extent in RMZ's from the early 1990's.

Riparian Adaptive Management Support Tools

This project was initiated in 1998 and jointly funded by the U.S. Geological Survey Biological Services Division, and DNR to evaluate and test riparian adaptive management support tools. The project calibrates a decision support tool for the synthesis of existing information on the impacts of forest management and natural processes on the quality of fish habitats on the western Olympic Peninsula. A final report is now in peer review. The results will help in setting priorities for riparian restoration as well as placing in context monitoring of riparian conditions and trends.

Type 5 Streams

In support of the development of this research and the eventual development of long-term management strategies for headwater streams, the DNR has conducted a literature review, illustrating the gaps and needed areas of research. This review, which can be found on the World Wide Web at <http://www2.wadnr.gov/type5/>, was completed in 2001 with continual updates in 2002. It analyses the existing scientific information on the ecology and management of type 5 streams.

Type 5 Streams Buffer Effectiveness Experiment

The DNR in cooperation with the USFS Pacific Northwest Experiment Station initiated a project to determine the possible impacts and consequences of different management approaches on 1st order streams in Western Washington in spring of 2002. During the summer we started pre-treatment measurements on 9 sets of headwater streams.

The study design will test the potential downstream impacts of different management approaches. The following key questions define the objectives of the study:

- How does timber harvesting affect headwater stream functions, i.e., sediment delivery, channel morphology, water chemistry, and changes in plant communities, water levels, and amphibian and invertebrate populations?
- What specific headwater stream functions should be protected and how will these be measured?
- What are the options for protecting headwater stream functions within the scope of the WADNR Habitat Conservation Plan riparian management strategy?

The study design will impose a range of management configurations on adjacent headwater streams. The three buffer configurations that we would like to compare are, variable buffer widths, fixed widths, no buffers, and use an unmanaged stream as a control. We will control treatments within the entire headwater stream basin (typically 4 to 12 Ha). The areas in which we are particularly interested in finding cooperators include: Discharge/ water level; Sediment storage; Invertebrates/amphibians; Organic matter transport; Changes in plant community; and Water chemistry.

Riparian Conditions and Trend Effectiveness Monitoring

An initial effort to characterize variations in stream temperature was conducted under contract by NMFS. This monitoring was initiated in 2001 and continued in 2002. The objective is to determine the required monitoring sample sizes for the in-stream habitat conditions and trends effectiveness monitoring. On the reaches monitored, initial results suggest that water temperature has recovered more than anticipated from previous disturbances. NMFS riparian ecologists are preparing a report from the last two years of monitoring.

Feasibility Assessment and Design of a Low Cost Escapement Estimation Method for Coho Salmon in the Clallam River

Jointly funded by the University of Washington and DNR, this project, initiated in 2001 and completed in 2002, will test proposed methods that may be of use for riparian validation monitoring. A final report has been produced.

Silviculture for Restoring Riparian Ecosystems

This cooperative project with the USFWS was conducted on the North Fork of the Calawah River on the OESF planning unit. It tests four prescriptions to convert hardwood dominated riparian areas to conifer stands. A final report was prepared in 2002.

Spotted Owls

Baseline Spotted Owl Validation Monitoring on the OESF

Conducted annually since 1993, baseline spotted owl surveys will provide context for eventual spotted owl validation monitoring. In the 2002 survey season one known occupied site was surveyed and confirmed still occupied.

Managing Young Stand Composition and Structure for Forest Productivity and Biodiversity

The project, jointly funded by the National Biological Service and DNR, was initiated on the OESF in the winter of 1998. The project tests four pre-commercial thinning regimes that are designed to restore diverse ecological stand structures and increase the development of quality wildlife habitat. The treatments will be remeasured early in 2003.

Functional role of down woody debris and Long-term Site Productivity

The project funded by the US Forest Service was initiated on the OESF in the winter of 1997. The OESF site is one of five replicates in the Pacific Northwest. The project tests the functional role of down woody debris as habitat. The DNR site was remeasured in 2002.

Spotted Owl Effectiveness Monitoring on the OESF

The operations feasibility and marketability of the proposed HCP spotted owl effectiveness monitoring prescriptions will be tested on a sub-basin scale on a timber sale in 2004. Extensive analysis by harvest engineers has allowed the placement of 2 replicates of 4 treatments on a large thinning sale on the OESF. In 2002 pretreatment plots were established to allow analysis and refine sampling of the treatment units.

Marbled Murrelets

Habitat Relationship Study and Interim Marbled Murrelet Conservation Strategy

Approximately \$720,000 was spent on marbled murrelet stand surveys to support the development of the long-term conservation strategy in 2002. Surveys of reclassified habitat in SW Washington were completed. Surveys continued in the OESF, Straits, and North Puget planning units.

Influence of Stand Structure, Proximity to Human Activity, and Forest Fragmentation on the Risk of Predation to Nests of Marbled Murrelets on the Olympic Peninsula

In 2002 the DNR continued its support of this four-year project. The results will provide information that will be used in developing the long-term murrelet conservation strategy.

Distribution and Abundance of Marbled Murrelets in Relation to Marine Habitat on the Outer Coast of Washington

This project, jointly funded by DNR and others, is part of the methods development for the USFS Forest Plan Marbled Murrelet Effectiveness Monitoring. Identical efforts are also underway in Oregon and California.

HCP Implementation Monitoring Pilot Project 2002

Key Summary Points: Observations and Results

Timber Activities

- Out of 28 total Timber Sales within the North Puget and South Puget planning units, 12 timber Sales, six in each planning unit, were sampled.
- Out of 96 combinations (12 activities and 8 strategies or strategy components), only four were found to be non-compliant. All four were associated with the Riparian strategy. Three RMZ buffers were deficient; the other was a mistyped stream, however a proper width buffer had been applied.
- A total of 29 streams were identified within the 12 timber sales and all were evaluated.
- In many instances, it was not possible to verify whether adequate leave trees were left to meet the requirements of the HCP strategy. In some cases, the differentiation of leave trees and adjoining timber stands was not possible, while in other cases removal and subsequent replacement of required leave trees that had blown down was not well documented.
- Substantial wind throw was observed and in some very severe cases most of the leave trees had fallen.

Silvicultural Activities

- A total of 34 Silvicultural management activities were randomly sampled from 340 total silvicultural activities. Three hundred six (306) possible combinations (34 individual activities and 9 strategies) were found to be in compliance. In many instances, conservation strategies did not apply to the activities we reviewed. However, we considered them to be in compliance since they did not violate the strategy.

Non-Timber Activities

- Forty-eight non-timber management activities were randomly sampled from a total of 179 non-timber management activities. All 48 were office reviewed and 9 of the 48 were field reviewed. All of the activities were compliant with the conservation strategies.

Acknowledgements

The Pilot Project provided very good interaction between region and division staff and the Services. It provided the best opportunity of meeting the people who were involved in setting up and complying the activities on the ground, and especially the thinking that they went through. It provided an opportunity to exchange and discuss ideas.

The monitoring team expresses its gratitude for all the support they received from the regions and the programs. The project met the objectives and the information gathered will be crucial as we move to the next phase of developing a statewide implementation plan.

Results Summaries

There are concerns with regard to our inability to verify leave trees in the timber management activities. This has resulted in our not being able to calculate a confidence

DNR Annual HCP Report to the Services – FY 2002

interval for the Structurally Unique Trees strategy. Although we completed a 100% count of required leave trees in only one timber management activity, we recognized that the amount of time and costs required to accomplish the leave tree verifications would be substantial. In many instances, the verifications were not even possible. The challenge will be to find a solution that validates whether or not we have met our leave tree requirements.

The following tables provide summary information of results from the 2002 Pilot Project. In the samples that were reviewed, most DNR activities were shown to be in compliance with the HCP strategies.

Timber Management Activities Summary

Implementation Monitoring Pilot Project 2002

Activities Reviewed	Activity Type	Stream Typing		RMZ Buffer Width			Owls		Murrelets		Structurally Unique Trees		Unstable Slopes		Listed Species		Unlisted Species		Hydrologic Maturity	
		Applies?	Compliant?	Applies?	Compliant before correction?	Compliant after correction?	Applies?	Compliant?	Applies?	Compliant?	Applies?	Compliant?	Applies?	Compliant?	Applies?	Compliant?	Applies?	Compliant?	Applies?	Compliant?
Victory	Regen Harvest	yes	yes	yes	no	no	no	n/a	yes	yes	yes	unable to count	yes	yes	yes	yes	no	n/a	no	n/a
Nellita	Regen Harvest	yes	yes	yes	no	yes	no	n/a	no	n/a	yes	yes (100% count)	yes	yes	no	n/a	no	n/a	no	n/a
Distribution Pole	Selective Product Logging	yes	yes	yes	no	no	no	n/a	no	n/a	no	n/a	no	n/a	no	n/a	no	n/a	no	n/a
Corked Too	Regen Harvest	yes	yes	yes	yes	yes	no	n/a	no	n/a	yes	unable to count	yes	yes	no	n/a	no	n/a	no	n/a
Hannus Road Blowdown	Salvage Logging	no	n/a	no	n/a	n/a	no	n/a	no	n/a	yes	unable to count	yes	yes	no	n/a	no	n/a	no	n/a
Old Blue	Regen Harvest	yes	yes	yes	no	yes	no	n/a	no	n/a	yes	unable to count	no	n/a	no	n/a	no	n/a	no	n/a
Pitch Black	Regen Harvest	yes	yes	yes	no	no	no	n/a	no	n/a	yes	unable to count	yes	yes	no	n/a	no	n/a	no	n/a
Grub Flats	Regen Harvest	yes	yes	no	n/a	n/a	no	n/a	yes	yes	yes	unable to count	no	n/a	yes	yes	no	n/a	no	n/a
Fall Out	Regen Harvest	yes	yes	yes	yes	yes	no	n/a	yes	yes	yes	unable to count	no	n/a	yes	yes	yes	yes	no	n/a
Welcome Mat	Regen Harvest	yes	yes	yes	yes	yes	no	n/a	no	n/a	yes	unable to count	no	n/a	no	n/a	no	n/a	no	n/a
Boulderwash	Regen Harvest	yes	no	yes	yes	yes	no	n/a	no	n/a	yes	unable to count	yes	yes	no	n/a	no	n/a	no	n/a
Hazel PC U4	Late Rotation Thinning	yes	yes	yes	yes	yes	yes	yes	no	n/a	no	n/a	no	n/a	no	n/a	no	n/a	no	n/a

Shaded entries = North Puget Planning Unit, Unshaded entries = South Puget Planning Unit

Twelve (12) timber management activities were selected for review from 28 total timber activities (43% sample).

Out of 96 possible combinations (12 activities and 8 strategies), only four were found to be non-compliant.

All distance measurements were corrected for margin of error with the following factors (-4.9% for paced distances; -1.70% for laser rangefinder distances).

A total of 29 streams within the 12 management activities were field reviewed. Three buffer widths were non-compliant after the margin of error was applied.

A mistyped stream on one activity was adequately buffered with an RMZ of 100' on each side of the stream.

**ESTIMATED LEVELS OF COMPLIANCE WITH HCP STRATEGIES
FOR TIMBER HARVEST ACTIVITIES
FISCAL YEAR 2001**

STRATEGY	SOUTH PUGET PLANNING AREA		NORTH PUGET PLANNING AREA	
	% COMPLIANCE	95% CONFIDENCE INTERVAL †	% COMPLIANCE	95% CONFIDENCE INTERVAL
Stream Typing	100	65-100	83	47-96
RMZ	67	33-89	83	47-96
Owls	100	65-100	100	65-100
Murrelet	100	65-100	100	65-100
Structurally Unique Trees	*	*	*	*
Unstable Slopes	100	65-100	100	65-100
Listed Species	100	65-100	100	65-100
Unlisted Species	100	65-100	100	65-100
Hydrologic Maturity	100	65-100	100	65-100

*Level of compliance for Structurally Unique Trees strategy was not computed because of the inability to verify the number of leave trees on most of the sampled activities.

†The 95% confidence interval means that there is a 95% chance that the interval includes the true level of compliance based on a sample size **n** taken from a population size **N**.

Silvicultural Management Activities Summary

Implementation Monitoring Pilot Project 2002

Activities Reviewed	Activity Type	Stream Typing		RMZ Buffer Width		Owls		Murrelets		Structurally Unique Trees		Unstable Slopes		Listed Species		Unlisted Species		Hydrologic Maturity	
		Applies?	Compliant?	Applies?	Compliant?	Applies?	Compliant?	Applies?	Compliant?	Applies?	Compliant?	Applies?	Compliant?	Applies?	Compliant?	Applies?	Compliant?	Applies?	Compliant?
Eberley Christie 2	Hand Plant	no	yes	no	n/a	no	n/a	no	n/a	no	n/a	no	n/a	none	n/a	none	n/a	no	n/a
Red Star 2	Hand Plant	yes	yes	yes	yes	no	n/a	no	n/a	no	n/a	no	n/a	none	n/a	none	n/a	no	n/a
Sweet and Sour 2	Hand Plant	yes	yes	n/a	yes	no	n/a	no	n/a	no	n/a	no	n/a	none	n/a	none	n/a	no	n/a
Redi-Cash	PCT	yes	yes	yes	yes	no	n/a	no	n/a	no	n/a	no	n/a	none	n/a	none	n/a	no	n/a
Zinger 1	Hand Plant	no	n/a	no	n/a	no	n/a	no	n/a	no	n/a	no	n/a	none	n/a	none	n/a	no	n/a
Go For It 2	Hand Cut	no	n/a	no	n/a	no	n/a	no	n/a	no	n/a	no	n/a	none	n/a	none	n/a	no	n/a
Mustard 1	Ground Herb	no	n/a	no	n/a	no	n/a	no	n/a	no	n/a	no	n/a	none	n/a	none	n/a	no	n/a
Silver View 0	Hand Plant	yes	yes	yes	yes	no	n/a	no	n/a	no	n/a	no	n/a	none	n/a	none	n/a	no	n/a
Iced Tea 2	Hand Cut	yes	n/a	no	n/a	no	n/a	no	n/a	no	n/a	no	n/a	none	n/a	none	n/a	no	n/a
Over Squire	Ground Herb	no	n/a	no	n/a	no	n/a	no	n/a	no	n/a	no	n/a	none	n/a	none	n/a	no	n/a
Good-By-Don 2	Ground Herb	yes	yes	no	n/a	no	n/a	no	n/a	no	n/a	no	n/a	none	n/a	none	n/a	no	n/a
Wilbur 1	Hand Cut	yes	yes	no	n/a	no	n/a	no	n/a	no	n/a	no	n/a	none	n/a	none	n/a	no	n/a
Carpenter Road 1	Hand Cut	yes	yes	yes	yes	no	n/a	no	n/a	no	n/a	no	n/a	none	n/a	none	n/a	no	n/a
Astro 1	Hand Plant	no	n/a	no	n/a	no	n/a	no	n/a	no	n/a	no	n/a	none	n/a	none	n/a	no	n/a
Gettysburg 3	Aerial Herb	no	n/a	no	n/a	no	n/a	no	n/a	no	n/a	no	n/a	none	n/a	none	n/a	no	n/a
Kirk 1	Hand Cut	no	n/a	no	n/a	no	n/a	no	n/a	no	n/a	no	n/a	none	n/a	none	n/a	no	n/a
Ridge Cleanup	Ground Herb	no	n/a	no	n/a	yes	yes	no	n/a	no	n/a	no	n/a	none	n/a	none	n/a	no	n/a
Mud Bay Grade 3	PCT	yes	yes	no	n/a	no	n/a	no	n/a	no	n/a	no	n/a	none	n/a	none	n/a	no	n/a
North Slope U-6	Hand Plant	no	n/a	no	n/a	no	n/a	no	n/a	no	n/a	no	n/a	none	n/a	none	n/a	no	n/a
Thorny U1-A	Aerial Herb	yes	yes	yes	yes	yes	yes	no	n/a	no	n/a	no	n/a	none	n/a	none	n/a	no	n/a
Buck Flats U-2	Hand Cut	no	n/a	no	n/a	no	n/a	no	n/a	no	n/a	no	n/a	none	n/a	none	n/a	no	n/a
Page Flat 1	Hand Cut	yes	yes	no	n/a	no	n/a	no	n/a	no	n/a	no	n/a	none	n/a	none	n/a	no	n/a
5400-2P	PCT	yes	yes	no	n/a	no	n/a	no	n/a	no	n/a	no	n/a	none	n/a	none	n/a	yes	n/a
Flag Forever 3	PCT	yes	yes	no	n/a	no	n/a	no	n/a	no	n/a	no	n/a	none	n/a	none	n/a	no	n/a
Muskkrat Luv	PCT	no	n/a	no	n/a	no	n/a	no	n/a	no	n/a	no	n/a	none	n/a	none	n/a	no	n/a
Olalla Unit 2	Hand Plant	no	n/a	no	n/a	no	n/a	no	n/a	no	n/a	no	n/a	none	n/a	none	n/a	no	n/a
Skeleton Key 5	Hand Plant	no	n/a	no	n/a	no	n/a	no	n/a	no	n/a	no	n/a	none	n/a	none	n/a	no	n/a
Blacksmith U 1 A	Hand Plant	no	n/a	no	n/a	no	n/a	no	n/a	no	n/a	no	n/a	none	n/a	none	n/a	no	n/a
Powergate	Hand Plant	no	n/a	no	n/a	no	n/a	no	n/a	no	n/a	no	n/a	none	n/a	none	n/a	no	n/a
Topnotch 1	Hand Plant	no	n/a	no	n/a	no	yes	no	n/a	no	n/a	no	n/a	none	n/a	none	n/a	no	n/a
UPS1	Hand Plant	no	n/a	no	n/a	no	yes	no	n/a	no	n/a	yes	yes	none	n/a	none	n/a	no	n/a
Old Wildberry 2	PCT	yes	n/a	no	n/a	no	n/a	no	n/a	no	n/a	no	n/a	none	n/a	none	n/a	no	n/a
Morgan 3B	Hand Cut	no	n/a	no	n/a	no	n/a	no	n/a	no	n/a	no	n/a	none	n/a	none	n/a	no	n/a
Tin Mine Overlook 1	Hand Cut	no	n/a	no	n/a	no	n/a	no	n/a	no	n/a	yes	yes	none	n/a	none	n/a	no	n/a

Shaded entries = North Puget Planning Unit, Unshaded entries = South Puget Planning Unit

Thirty-four (34) silvicultural management activities were randomly selected for review from 340 total silvicultural activities (10% sample).

All 306 possible combinations (34 activities and 9 strategies) were found to be in compliance.

In many instances, conservation strategies did not apply to the activities we reviewed. However, we considered them to be in compliance because they did not violate the strategy.

**ESTIMATED LEVELS OF COMPLIANCE WITH HCP STRATEGIES
FOR SILVICULTURAL ACTIVITIES
FISCAL YEAR 2001**

STRATEGY	SOUTH PUGET PLANNING AREA		NORTH PUGET PLANNING AREA	
	% COMPLIANCE	95% CONFIDENCE INTERVAL †	% COMPLIANCE	95% CONFIDENCE INTERVAL
Stream Typing	100	82-100	100	82-100
RMZ	100	82-100	100	82-100
Owls	100	82-100	100	82-100
Murrelet	100	82-100	100	82-100
Structurally Unique Trees	100	82-100	100	82-100
Unstable Slopes	100	82-100	100	82-100
Listed Species	100	82-100	100	82-100
Unlisted Species	100	82-100	100	82-100
Hydrologic Maturity	100	82-100	100	82-100

†The 95% confidence interval means that there is a 95% chance that the interval includes the true level of compliance based on a sample size *n* taken from a population size **N**.

Non-Timber Management Activities Summary

Implementation Monitoring Pilot Project 2002

Activities Reviewed	Activity Type	Activities Reviewed X=Field Review	Stream Typing		RMZ Buffer Width		Owls		Murrelets		Structurally Unique Trees		Unstable Slopes		Listed Species		Unlisted Species		Hydrologic Maturity	
			Applies?	Compliant?	Applies?	Compliant?	Applies?	Compliant?	Applies?	Compliant?	Applies?	Compliant?	Applies?	Compliant?	Applies?	Compliant?	Applies?	Compliant?	Applies?	Compliant?
Walker Valley Trail Upgrade	Rec.Trails+Bridge	X	yes	yes	yes	yes	no	n/a	no	n/a	no	n/a	no	n/a	none	n/a	none	n/a	no	n/a
Walker Valley Jeep Trail	Rec.Trails	X	yes	yes	yes	yes	no	n/a	no	n/a	no	n/a	no	n/a	none	n/a	none	n/a	no	n/a
Subtotal		2																		
Capitol Forest M&O	Recreation Trails	X	yes	yes	yes	yes	no	n/a	no	n/a	no	n/a	no	n/a	none	n/a	none	n/a	no	n/a
Capitol Forest ORV Trail	Recreation Trails	X	yes	yes	yes	yes	no	n/a	no	n/a	no	n/a	no	n/a	none	n/a	none	n/a	no	n/a
Capitol Forest ORV Bridge	Bridge reconstruction	X	yes	yes	yes	yes	no	n/a	no	n/a	no	n/a	no	n/a	none	n/a	none	n/a	no	n/a
Tiger Mtn.Iverson Trai Bridge	Trail construction	X	yes	yes	yes	yes	no	n/a	no	n/a	no	n/a	no	n/a	none	n/a	none	n/a	no	n/a
Tahuya ORV Trail	Trail and a Bridge	X	yes	yes	yes	yes	no	n/a	no	n/a	no	n/a	no	n/a	none	n/a	none	n/a	no	n/a
Gold Creek Trail	Parking relocation	X	yes	yes	yes	yes	no	n/a	no	n/a	no	n/a	no	n/a	none	n/a	none	n/a	no	n/a
Tahuya/Green Trail Maint	Rec.Trail reconstruct.	X	yes	yes	yes	yes	no	n/a	no	n/a	no	n/a	no	n/a	none	n/a	none	n/a	no	n/a
Subtotal		7																		
Western Wireless	Easements		no	n/a	no	n/a	no	n/a	no	n/a	no	n/a	no	n/a	none	n/a	none	n/a	no	n/a
Crown Pacific	Rights of Way		no	n/a	no	n/a	no	n/a	no	n/a	no	n/a	no	n/a	none	n/a	none	n/a	no	n/a
Subtotal		2																		
Mtn. To Sound Greenway	Easements		no	n/a	no	n/a	no	n/a	no	n/a	no	n/a	no	n/a	none	n/a	none	n/a	no	n/a
Pierce Co. Public Works	Easements		no	n/a	no	n/a	no	n/a	no	n/a	no	n/a	no	n/a	none	n/a	none	n/a	no	n/a
Single Track Mind	Easements		no	n/a	no	n/a	no	n/a	no	n/a	no	n/a	no	n/a	none	n/a	none	n/a	no	n/a
Mason Co. Public Works	Easements		no	n/a	no	n/a	no	n/a	no	n/a	no	n/a	no	n/a	none	n/a	none	n/a	no	n/a
Subtotal		4																		
Walville	Communication Site		no	n/a	no	n/a	no	n/a	no	n/a	no	n/a	no	n/a	none	n/a	none	n/a	no	n/a
Raging River	Communication Site		no	n/a	no	n/a	no	n/a	no	n/a	no	n/a	no	n/a	none	n/a	none	n/a	no	n/a
Subtotal		2																		
Birdwell#10055854	Grazing Lease		no	n/a	no	n/a	no	n/a	no	n/a	no	n/a	no	n/a	none	n/a	none	n/a	no	n/a
Ault #10A55854	Grazing Lease		no	n/a	no	n/a	no	n/a	no	n/a	no	n/a	no	n/a	none	n/a	none	n/a	no	n/a
Ashe # 10A68793	Grazing Lease		no	n/a	no	n/a	no	n/a	no	n/a	no	n/a	no	n/a	none	n/a	none	n/a	no	n/a
WDFD #10071964	Grazing Lease		no	n/a	no	n/a	no	n/a	no	n/a	no	n/a	no	n/a	none	n/a	none	n/a	no	n/a
Subtotal		4																		
Grays Harbor Block	Spec.Forest Products		n/a	n/a	no	n/a	no	n/a	no	n/a	no	n/a	no	n/a	none	n/a	none	n/a	no	n/a
Lewis Block	Spec.Forest Products		n/a	n/a	no	n/a	no	n/a	no	n/a	no	n/a	no	n/a	none	n/a	none	n/a	no	n/a
Pacific Block	Spec.Forest Products		n/a	n/a	no	n/a	no	n/a	no	n/a	no	n/a	no	n/a	none	n/a	none	n/a	no	n/a
Thurston Block	Spec.Forest Products		n/a	n/a	no	n/a	no	n/a	no	n/a	no	n/a	no	n/a	none	n/a	none	n/a	no	n/a
Subtotal		4																		
NW Contractors#35-00-5602	Spec.Forest Products		n/a	n/a	no	n/a	no	n/a	no	n/a	no	n/a	no	n/a	none	n/a	none	n/a	no	n/a
NW Contractors#35-00-5614	Spec.Forest Products		n/a	n/a	no	n/a	no	n/a	no	n/a	no	n/a	no	n/a	none	n/a	none	n/a	no	n/a
NW Contractors#35-00-5604	Spec.Forest Products		n/a	n/a	no	n/a	no	n/a	no	n/a	no	n/a	no	n/a	none	n/a	none	n/a	no	n/a
Mt.Baker Evergreen#35-00-5611	Spec.Forest Products		n/a	n/a	no	n/a	no	n/a	no	n/a	no	n/a	no	n/a	none	n/a	none	n/a	no	n/a
Mt.Baker Evergreen#35-00-5407	Spec.Forest Products		n/a	n/a	no	n/a	no	n/a	no	n/a	no	n/a	no	n/a	none	n/a	none	n/a	no	n/a
Subtotal		5																		
North Puget	Land Transaction	4	n/a	n/a	no	n/a	no	n/a	no	n/a	no	n/a	no	n/a	none	n/a	none	n/a	no	n/a
South Puget	Land Transaction	4	n/a	n/a	no	n/a	no	n/a	no	n/a	no	n/a	no	n/a	none	n/a	none	n/a	no	n/a
South Puget	Mineral,Rock,Sand,Gr.	5	n/a	n/a	no	n/a	no	n/a	no	n/a	no	n/a	no	n/a	none	n/a	none	n/a	no	n/a
North Puget	Mineral,Rock,Sand,Gr.	5	n/a	n/a	no	n/a	no	n/a	no	n/a	no	n/a	no	n/a	none	n/a	none	n/a	no	n/a
North Puget Total	All Activities	18																		
South Puget Total	All Activities	30																		

Shaded entries = North Puget Planning Unit, Unshaded entries = South Puget Planning Unit

Forty-eight (48) non-timber management activities were randomly selected for review from 179 total non-timber activities (27% sample)

All 48 non-timber activities were reviewed in the office; nine (9) of the forty-eight were also field reviewed.

In many instances, conservation strategies did not apply to the activities we reviewed. However, we considered them to be in compliance because they did not violate the strategy

**ESTIMATED LEVELS OF COMPLIANCE WITH HCP STRATEGIES
FOR NON-TIMBER MANAGEMENT ACTIVITIES*
IN THE NORTH PUGET PLANNING AREA
FISCAL YEAR 2001**

STRATEGY	RECREATIONAL USE		LAND TRANSACTIONS		MINERAL, ROCK, SAND & GRAVEL	
	% Compliance	95% † Confidence Interval	% Compliance	95% † Confidence Interval	% Compliance	95% † Confidence Interval
Stream Typing	100	60-100	100	44-100	100	57-100
RMZ	100	60-100	100	44-100	100	57-100
Owls	100	60-100	100	44-100	100	57-100
Murrelet	100	60-100	100	44-100	100	57-100
Structurally Unique Trees	100	60-100	100	44-100	100	57-100
Unstable Slopes	100	60-100	100	44-100	100	57-100
Listed Species	100	60-100	100	44-100	100	57-100
Unlisted Species	100	60-100	100	44-100	100	57-100
Hydrologic Maturity	100	60-100	100	44-100	100	57-100

*Right of ways/easements, communication sites, grazing leases, and special forest products are not listed in the table because 100% were reviewed and all were compliant with the strategies considered.

†The 95% confidence interval means that there is a 95% chance that the interval includes the true level of compliance based on a sample size **n** taken from a population size **N**.

**ESTIMATED LEVELS OF COMPLIANCE WITH HCP STRATEGIES
FOR NON-TIMBER MANAGEMENT ACTIVITIES*
IN THE SOUTH PUGET PLANNING AREA
FISCAL YEAR 2001**

STRATEGY	RECREATIONAL USE		LAND TRANSACTIONS		MINERAL, ROCK, SAND & GRAVEL	
	% Compliance	95% † Confidence Interval	% Compliance	95% † Confidence Interval	% Compliance	95% † Confidence Interval
Stream Typing	100	70-100	100	43-100	100	50-100
RMZ	100	70-100	100	43-100	100	50-100
Owls	100	70-100	100	43-100	100	50-100
Murrelet	100	70-100	100	43-100	100	50-100
Structurally Unique Trees	100	70-100	100	43-100	100	50-100
Unstable Slopes	100	70-100	100	43-100	100	50-100
Listed Species	100	70-100	100	43-100	100	50-100
Unlisted Species	100	70-100	100	43-100	100	50-100
Hydrologic Maturity	100	70-100	100	43-100	100	50-100

*Right of ways/easements, communication sites, grazing leases, and special forest products are not listed in the table because 100% were reviewed and all were compliant with the strategies considered.

†The 95% confidence interval means that there is a 95% chance that the interval includes the true level of compliance based on a sample size **n** taken from a population size **N**.

APPENDIX A: SILVICULTURAL ACTIVITIES

Appendix A

Silvicultural Activities

Fiscal Year 2002

Chelan HCP Planning Unit			
Silvicultural Activity	Acres	Location	FPA #
Vegetation management - Seeding grass	254	T32N R21E S36	

Columbia HCP Planning Unit			
Silvicultural Activity	Acres	Location	FPA #
Timber Harvest - Clear cut	64	T02N R04E S12	2901651
Timber Harvest - Clear cut	4	T03N R03E S12	2902386
Timber Harvest - Clear cut	26	T03N R03E S12	2902386
Timber Harvest - Clear cut	89	T03N R03E S13	2901721
Timber Harvest - Clear cut	65	T03N R04E S08	2902451
Timber Harvest - Clear cut	31	T03N R04E S18	2902451
Timber Harvest - Clear cut	26	T03N R04E S18	2901721
Timber Harvest - Clear cut	48	T03N R04E S25	2902392
Timber Harvest - Clear cut	70	T03N R04E S25	2902392
Timber Harvest - Clear cut	35	T03N R05E S30	2901720
Timber Harvest - Clear cut	26	T03N R05E S30	2901720
Timber Harvest - Clear cut	22	T03N R05E S31	2901720
Timber Harvest - Clear cut	16	T03N R05E S31	2901720
Timber Harvest - Clear cut	79	T04N R03E S36	2903160
Timber Harvest - Clear cut	53	T04N R04E S28	2902386
Timber Harvest - Clear cut	7	T05N R03E S04	2902275
Timber Harvest - Clear cut	49	T05N R03E S06	2902828
Timber Harvest - Clear cut	2	T05N R03E S09	2902275
Timber Harvest - Clear cut	48	T06N R02E S17	2902702
Timber Harvest - Clear cut	21	T06N R02E S17	2902702
Timber Harvest - Clear cut	29	T06N R02E S20	2902702
Timber Harvest - Clear cut	33	T06N R02E S30	2901722
Timber Harvest - Clear cut	55	T06N R02E S30	2901722
Timber Harvest - Clear cut	1	T06N R03E S10	2903032
Timber Harvest - Clear cut	3	T06N R03E S10	2903032
Timber Harvest - Clear cut	11	T06N R03E S10	2903032
Timber Harvest - Clear cut	68	T06N R03E S12	2903032
Timber Harvest - Clear cut	4	T06N R03E S14	2903032
Timber Harvest - Clear cut	3	T06N R03E S14	2903032
Timber Harvest - Clear cut	15	T06N R03E S14	2903032
Timber Harvest - Clear cut	11	T06N R03E S31	2902828
Timber Harvest - Clear cut	55	T06N R03E S33	2902275
Timber Harvest - Clear cut	6	T06N R04E S05	2902608
Timber Harvest - Clear cut	31	T06N R04E S06	2901708
Timber Harvest - Clear cut	47	T06N R04E S08	2901707
Timber Harvest - Clear cut	72	T06N R04E S08	2901707
Timber Harvest - Clear cut	82	T07N R01E S22	2902607
Timber Harvest - Clear cut	31	T07N R04E S32	2902608
Timber Harvest - Clear cut	14	T07N R04E S32	2902608
Timber Harvest - Clear cut	19	T07N R04E S32	2902608
Timber Harvest - Clear cut	7	T07N R04E S32	2902608
Timber Harvest - Clear cut	36	T08N R04W S04	2902576

Columbia HCP Planning Unit			
Silvicultural Activity	Acres	Location	FPA #
Timber Harvest - Clear cut	55	T08N R04W S04	2902576
Timber Harvest - Clear cut	1	T08N R04W S04	2902576
Timber Harvest - Clear cut	45	T08N R05W S10	2903227
Timber Harvest - Clear cut	5	T09N R02E S03	2902379
Timber Harvest - Clear cut	7	T09N R02E S11	2902379
Timber Harvest - Clear cut	96	T09N R05W S28	2902524
Timber Harvest - Clear cut	92	T10N R06W S02	2902153
Timber Harvest - Clear cut	64	T10N R06W S35	2903159
Timber Harvest - Clear cut	9	T10N R06W S36	2903159
Timber Harvest - Clear cut	29	T11N R07W S18	2506129
Timber Harvest - Clear cut	39	T11N R07W S18	2506129
Timber Harvest - Clear cut	47	T11N R07W S21	2506244
Timber Harvest - Clear cut	87	T11N R07W S30	2506427
Timber Harvest - Late rotation thinning	100	T09N R04W S18	2901709
Timber Harvest - Late rotation thinning	19	T10N R04W S31	2902488
Timber Harvest - Late rotation thinning	76	T10N R05W S25	2902488
Timber Harvest - Late rotation thinning	37	T10N R05W S35	2902488
Timber Harvest - Late rotation thinning	6	T10N R05W S35	2902488
Timber Harvest - Late rotation thinning	11	T10N R05W S36	2902488
Timber Harvest - Late rotation thinning	54	T10N R05W S36	2902488
Timber Harvest - Late rotation thinning	44	T10N R05W S36	2902488
Timber Harvest - Late rotation thinning	79	T10N R05W S36	2902488
Timber Harvest - Late rotation thinning	35	T12N R03W S25	2506865
Timber Harvest - Smallwood thinning	16	T09N R02E S03	2902379
Timber Harvest - Smallwood thinning	6	T09N R02E S03	2902379
Timber Harvest - Smallwood thinning	9	T09N R02E S03	2902379
Timber Harvest - Smallwood thinning	9	T09N R02E S03	2902379
Timber Harvest - Smallwood thinning	14	T09N R02E S03	2902379
Timber Harvest - Smallwood thinning	16	T09N R02E S04	2902379
Timber Harvest - Smallwood thinning	4	T09N R02E S04	2902379
Timber Harvest - Smallwood thinning	25	T09N R02E S04	2902379
Timber Harvest - Smallwood thinning	64	T09N R02E S04	2902379
Timber Harvest - Smallwood thinning	12	T09N R02E S10	2902379
Timber Harvest - Smallwood thinning	21	T09N R02E S10	2902379
Timber Harvest - Smallwood thinning	7	T09N R02E S11	2902379
Timber Harvest - Smallwood thinning	99	T09N R02E S11	2902379
Timber Harvest - Smallwood thinning	167	T09N R02E S15	2902489
Timber Harvest - Smallwood thinning	311	T09N R02E S16	2902489
Timber Harvest - Smallwood thinning	105	T11N R03E S18	2508117
Timber Harvest - Smallwood thinning	22	T13N R03E S29	2504153
Timber Harvest - Smallwood thinning	15	T13N R03E S31	2504153
Timber Harvest - Smallwood thinning	52	T13N R03E S32	2504153
Timber Harvest - Smallwood thinning	184	T13N R03E S32	2504153
Forest site preparation - Aerial herbicide	89	T02N R04E S01	2903329
Forest site preparation - Aerial herbicide	45	T02N R04E S01	2903329
Forest site preparation - Aerial herbicide	64	T02N R04E S12	2903329
Forest site preparation - Aerial herbicide	33	T02N R04E S13	2903329
Forest site preparation - Aerial herbicide	36	T02N R04E S16	2903329
Forest site preparation - Aerial herbicide	28	T02N R05E S07	2903329
Forest site preparation - Aerial herbicide	4	T02N R05E S07	2903329
Forest site preparation - Aerial herbicide	3	T02N R05E S07	2903329
Forest site preparation - Aerial herbicide	50	T03N R03E S13	2903329

Columbia HCP Planning Unit			
Silvicultural Activity	Acres	Location	FPA #
Forest site preparation - Aerial herbicide	75	T03N R06E S20	2903329
Forest site preparation - Aerial herbicide	13	T03N R06E S22	2903329
Forest site preparation - Aerial herbicide	7	T03N R06E S22	2903329
Forest site preparation - Aerial herbicide	18	T03N R06E S22	2903329
Forest site preparation - Aerial herbicide	31	T06N R02E S19	2903329
Forest site preparation - Aerial herbicide	68	T06N R02E S30	2903329
Forest site preparation - Aerial herbicide	57	T06N R02E S36	2903329
Forest site preparation - Aerial herbicide	55	T06N R03E S12	2903329
Forest site preparation - Aerial herbicide	43	T06N R03E S31	2903329
Forest site preparation - Aerial herbicide	48	T07N R01E S16	2903329
Forest site preparation - Ground herbicide	55	T10N R02W S10	
Forest site preparation - Ground herbicide	46	T10N R02W S10	
Forest site preparation - Ground herbicide	29	T10N R02W S10	
Forest site preparation - Ground herbicide	11	T10N R02W S10	
Forest site preparation - Ground herbicide	4	T11N R02W S31	
Forest site preparation - Ground herbicide	25	T11N R02W S31	
Forest site preparation - Ground herbicide	15	T11N R02W S31	
Forest site preparation - Ground mechanical	8	T04N R02E S36	
Forest site preparation - Ground mechanical	16	T04N R02E S36	
Forest site preparation - Ground mechanical	14	T04N R02E S36	
Forest regeneration - Hand planting	39	T02N R04E S01	
Forest regeneration - Hand planting	68	T02N R04E S01	
Forest regeneration - Hand planting	64	T02N R04E S12	
Forest regeneration - Hand planting	33	T02N R04E S13	
Forest regeneration - Hand planting	36	T02N R04E S16	
Forest regeneration - Hand planting	87	T02N R04E S17	
Forest regeneration - Hand planting	28	T02N R05E S07	
Forest regeneration - Hand planting	3	T02N R05E S07	
Forest regeneration - Hand planting	4	T02N R05E S07	
Forest regeneration - Hand planting	10	T02N R05E S25	
Forest regeneration - Hand planting	4	T03N R02E S21	
Forest regeneration - Hand planting	23	T03N R03E S12	
Forest regeneration - Hand planting	53	T03N R03E S13	
Forest regeneration - Hand planting	7	T03N R06E S22	
Forest regeneration - Hand planting	18	T03N R06E S22	
Forest regeneration - Hand planting	13	T03N R06E S22	
Forest regeneration - Hand planting	6	T03N R06E S23	
Forest regeneration - Hand planting	62	T03N R06E S23	
Forest regeneration - Hand planting	14	T04N R02E S36	
Forest regeneration - Hand planting	14	T04N R02E S36	
Forest regeneration - Hand planting	71	T04N R03E S36	
Forest regeneration - Hand planting	15	T04N R04E S28	
Forest regeneration - Hand planting	4	T05N R02E S36	
Forest regeneration - Hand planting	22	T05N R02E S36	
Forest regeneration - Hand planting	1	T05N R02E S36	
Forest regeneration - Hand planting	23	T06N R02E S18	
Forest regeneration - Hand planting	29	T06N R02E S19	
Forest regeneration - Hand planting	66	T06N R02E S30	
Forest regeneration - Hand planting	55	T06N R02E S30	
Forest regeneration - Hand planting	33	T06N R02E S30	
Forest regeneration - Hand planting	33	T06N R02E S32	
Forest regeneration - Hand planting	57	T06N R02E S36	

Columbia HCP Planning Unit			
Silvicultural Activity	Acres	Location	FPA #
Forest regeneration - Hand planting	55	T06N R03E S12	
Forest regeneration - Hand planting	50	T06N R03E S16	
Forest regeneration - Hand planting	43	T06N R03E S31	
Forest regeneration - Hand planting	27	T06N R04E S26	
Forest regeneration - Hand planting	57	T07N R01E S09	
Forest regeneration - Hand planting	46	T08N R05W S01	
Forest regeneration - Hand planting	84	T08N R05W S03	
Forest regeneration - Hand planting	46	T09N R04W S19	
Forest regeneration - Hand planting	26	T09N R05W S13	
Forest regeneration - Hand planting	96	T09N R05W S28	
Forest regeneration - Hand planting	46	T10N R02W S10	
Forest regeneration - Hand planting	29	T10N R02W S10	
Forest regeneration - Hand planting	11	T10N R02W S10	
Forest regeneration - Hand planting	55	T10N R02W S10	
Forest regeneration - Hand planting	7	T10N R04W S34	
Forest regeneration - Hand planting	18	T10N R06W S02	
Forest regeneration - Hand planting	92	T10N R06W S02	
Forest regeneration - Hand planting	17	T11N R02E S28	
Forest regeneration - Hand planting	78	T11N R02E S28	
Forest regeneration - Hand planting	4	T11N R02W S31	
Forest regeneration - Hand planting	25	T11N R02W S31	
Forest regeneration - Hand planting	15	T11N R02W S31	
Forest regeneration - Hand planting	29	T11N R07W S18	
Forest regeneration - Hand planting	39	T11N R07W S18	
Forest regeneration - Hand planting	29	T11N R07W S18	
Forest regeneration - Hand planting	47	T11N R07W S21	
Forest regeneration - Hand planting	9	T12N R02E S32	
Forest regeneration - Hand planting	30	T12N R02E S32	
Forest regeneration - Hand planting	16	T12N R02W S30	
Forest regeneration - Natural regeneration	25	T11N R07W S18	
Vegetation management - Aerial herbicide	42	T06N R01E S25	2903330
Vegetation management - Aerial herbicide	60	T06N R01E S25	2903330
Vegetation management - Aerial herbicide	69	T06N R01E S36	2903330
Vegetation management - Aerial herbicide	87	T06N R02E S27	2903330
Vegetation management - Aerial herbicide	12	T06N R02E S32	2903330
Vegetation management - Aerial herbicide	50	T06N R02E S32	2903330
Vegetation management - Aerial herbicide	19	T06N R02E S32	2903330
Vegetation management - Aerial herbicide	22	T06N R04E S13	2903330
Vegetation management - Aerial herbicide	25	T06N R04E S14	2903330
Vegetation management - Aerial herbicide	31	T06N R04E S14	2903330
Vegetation management - Aerial herbicide	30	T06N R05E S18	2903330
Vegetation management - Aerial herbicide	55	T06N R05E S19	2903330
Vegetation management - Aerial herbicide	60	T07N R01E S09	2903330
Vegetation management - Aerial herbicide	78	T07N R01E S16	2903330
Vegetation management - Aerial herbicide	92	T07N R01E S16	2903330
Vegetation management - Aerial herbicide	57	T07N R01E S24	2903330
Vegetation management - Aerial herbicide	72	T08N R04W S07	2903330
Vegetation management - Aerial herbicide	32	T08N R05W S04	2903330
Vegetation management - Aerial herbicide	66	T08N R05W S04	2903330
Vegetation management - Aerial herbicide	47	T09N R05W S33	2903330
Vegetation management - Aerial herbicide	31	T09N R05W S33	2903330
Vegetation management - Aerial herbicide	44	T11N R03E S15	2508109

Columbia HCP Planning Unit			
Silvicultural Activity	Acres	Location	FPA #
Vegetation management - Aerial herbicide	15	T11N R03E S17	2508109
Vegetation management - Aerial herbicide	60	T11N R03E S17	2508109
Vegetation management - Aerial herbicide	9	T11N R03E S18	2508109
Vegetation management - Aerial herbicide	60	T12N R02E S30	2509029
Vegetation management - Aerial herbicide	60	T12N R02E S30	2509029
Vegetation management - Aerial herbicide	15	T12N R02W S30	2508109
Vegetation management - Aerial herbicide	52	T12N R03W S14	2508109
Vegetation management - Aerial herbicide	14	T12N R03W S14	2508109
Vegetation management - Aerial herbicide	24	T12N R03W S14	2508109
Vegetation management - Aerial herbicide	40	T12N R03W S14	2508109
Vegetation management - Ground herbicide	8	T06N R02E S30	
Vegetation management - Ground herbicide	5	T06N R02E S32	
Vegetation management - Ground herbicide	13	T09N R02E S02	
Vegetation management - Ground herbicide	11	T09N R02E S02	
Vegetation management - Ground herbicide	8	T09N R02E S02	
Vegetation management - Ground herbicide	29	T10N R02W S08	
Vegetation management - Ground herbicide	20	T10N R02W S09	
Vegetation management - Ground herbicide	89	T11N R02E S22	
Vegetation management - Ground herbicide	58	T12N R07E S23	
Vegetation management - Ground herbicide	7	T12N R08E S19	
Vegetation management - Ground herbicide	8	T12N R08E S19	
Vegetation management - Hand cutting	18	T04N R04E S34	
Vegetation management - Hand cutting	20	T04N R04E S34	
Vegetation management - Hand cutting	5	T04N R04E S35	
Vegetation management - Hand cutting	10	T09N R04W S09	
Vegetation management - Hand cutting	38	T10N R08W S01	
Vegetation management - Hand cutting	30	T11N R02E S02	
Vegetation management - Hand cutting	28	T11N R02E S03	
Vegetation management - Hand cutting	94	T11N R07W S18	
Vegetation management - Hand cutting	23	T11N R07W S19	
Vegetation management - Hand cutting	93	T11N R07W S19	
Vegetation management - Hand cutting	2	T11N R07W S19	
Vegetation management - Hand cutting	7	T11N R07W S19	
Vegetation management - Hand cutting	77	T11N R07W S19	
Vegetation management - Hand cutting	3	T11N R07W S19	
Vegetation management - Hand cutting	3	T11N R07W S19	
Vegetation management - Hand cutting	3	T11N R07W S20	
Vegetation management - Hand cutting	60	T11N R07W S20	
Vegetation management - Hand cutting	27	T11N R07W S20	
Vegetation management - Hand cutting	86	T11N R07W S20	
Vegetation management - Hand cutting	3	T11N R07W S20	
Vegetation management - Hand cutting	3	T11N R07W S20	
Vegetation management - Hand cutting	3	T11N R07W S20	
Vegetation management - Hand cutting	3	T11N R07W S20	
Vegetation management - Hand cutting	2	T11N R07W S21	
Vegetation management - Hand cutting	37	T11N R07W S29	
Vegetation management - Hand cutting	12	T11N R07W S31	
Vegetation management - Hand cutting	19	T11N R07W S31	
Vegetation management - Hand cutting	3	T11N R08W S36	
Vegetation management - Hand cutting	40	T11N R08W S36	
Vegetation management - Hand cutting	5	T11N R08W S36	
Vegetation management - Hand cutting	20	T11N R08W S36	

Columbia HCP Planning Unit			
Silvicultural Activity	Acres	Location	FPA #
Vegetation management - Hand cutting	7	T12N R01E S36	
Vegetation management - Hand cutting	35	T12N R02E S34	
Vegetation management - Hand cutting	47	T13N R02E S25	
Vegetation management - Hand cutting	10	T13N R03E S18	
Vegetation management - Hand cutting	29	T13N R09E S09	
Vegetation management - Hand cutting	5	T13N R09E S16	
Vegetation management - Hand cutting	4	T13N R09E S16	
Vegetation management - Hand cutting	3	T13N R09E S16	
Vegetation management - Hand cutting	7	T13N R09E S16	
Vegetation management - Hand cutting	7	T13N R09E S16	
Vegetation management - Hand cutting	4	T13N R09E S16	
Vegetation management - Hand cutting	5	T13N R09E S16	
Vegetation management - Hand cutting	30	T13N R09E S17	
Vegetation management - Hand cutting	21	T13N R09E S20	
Pre-commercial thinning	77	T03N R04E S18	
Pre-commercial thinning	38	T06N R01E S24	
Pre-commercial thinning	39	T06N R01E S36	
Pre-commercial thinning	4	T06N R02E S19	
Pre-commercial thinning	24	T06N R02E S22	
Pre-commercial thinning	36	T06N R02E S35	
Pre-commercial thinning	9	T06N R02E S35	
Pre-commercial thinning	30	T06N R04E S34	
Pre-commercial thinning	130	T09N R05W S33	
Pest management - Shielding or fencing	31	T12N R02E S32	
Pest management - Shielding or fencing	9	T12N R02E S32	

Klickitat HCP Planning Unit			
Silvicultural Activity	Acres	Location	FPA #
Timber Harvest - Clear cut	94	T04N R09E S24	2701534
Timber Harvest - Clear cut	25	T04N R10E S07	2701041
Timber Harvest - Clear cut	8	T04N R10E S08	2701041
Timber Harvest - Clear cut	24	T04N R10E S08	2701041
Timber Harvest - Clear cut	2	T04N R10E S08	2701041
Timber Harvest - Clear cut	5	T04N R10E S08	2701041
Timber Harvest - Clear cut	4	T05N R11E S29	2701199
Timber Harvest - Clear cut	3	T05N R11E S29	2701199
Timber Harvest - Clear cut	4	T05N R11E S29	2701199
Timber Harvest - Clear cut	15	T05N R11E S29	2701199
Timber Harvest - Late rotation thinning	27	T05N R11E S30	2701199
Timber Harvest - Late rotation thinning	25	T05N R11E S31	2701199
Timber Harvest - Late rotation thinning	238	T06N R11E S35	2701246
Timber Harvest - Late rotation thinning	256	T06N R14E S36	2701506
Timber Harvest - Late rotation thinning	42	T06N R14E S36	2701506
Timber Harvest - Late rotation thinning	152	T06N R14E S36	2701506
Timber Harvest - Late rotation thinning	184	T06N R15E S16	2701198
Timber Harvest - Salvage cut	77	T06N R14E S22	2701506
Timber Harvest - Shelterwood intermediate cut	262	T03N R12E S06	2700933
Timber Harvest - Shelterwood intermediate cut	79	T04N R12E S31	2700933
Timber Harvest - Shelterwood removal cut	70	T05N R11E S31	2701199
Timber Harvest - Shelterwood removal cut	8	T05N R11E S31	2701199
Timber Harvest - Smallwood thinning	3	T04N R10E S07	2701041
Timber Harvest - Smallwood thinning	15	T04N R10E S07	2701041

Klickitat HCP Planning Unit			
Silvicultural Activity	Acres	Location	FPA #
Timber Harvest - Smallwood thinning	91	T04N R10E S08	2701041
Timber Harvest - Smallwood thinning	5	T04N R10E S08	2701041
Timber Harvest - Smallwood thinning	47	T04N R10E S08	2701041
Timber Harvest - Smallwood thinning	8	T04N R10E S08	2701041
Timber Harvest - Smallwood thinning	1	T04N R10E S08	2701041
Timber Harvest - Smallwood thinning	5	T04N R10E S08	2701041
Timber Harvest - Smallwood thinning	9	T04N R10E S08	2701041
Timber Harvest - Smallwood thinning	2	T04N R10E S08	2701041
Timber Harvest - Smallwood thinning	38	T04N R10E S08	2701041
Timber Harvest - Smallwood thinning	61	T04N R10E S08	2701041
Timber Harvest - Smallwood thinning	3	T04N R10E S17	2701041
Timber Harvest - Smallwood thinning	32	T04N R10E S17	2701041
Timber Harvest - Smallwood thinning	12	T04N R10E S17	2701041
Timber Harvest - Smallwood thinning	4	T04N R10E S20	2701041
Timber Harvest - Uneven-aged management	167	T11N R14E S04	2701180
Forest site preparation - Ground mechanical	12	T04N R09E S24	
Forest site preparation - Ground mechanical	6	T04N R10E S07	
Forest site preparation - Ground mechanical	15	T04N R10E S07	
Forest site preparation - Hand cutting	80	T12N R14E S14	
Forest site preparation - Hand cutting	105	T12N R14E S14	
Forest site preparation - Hand cutting	55	T12N R14E S14	
Forest regeneration - Hand planting	94	T04N R09E S24	
Forest regeneration - Hand planting	56	T04N R11E S25	
Forest regeneration - Hand planting	28	T04N R12E S25	
Forest regeneration - Hand planting	15	T05N R11E S29	
Forest regeneration - Hand planting	4	T05N R11E S29	
Forest regeneration - Hand planting	4	T05N R11E S29	
Forest regeneration - Hand planting	3	T05N R11E S29	
Forest regeneration - Hand planting	70	T05N R11E S31	
Forest regeneration - Hand planting	8	T05N R11E S31	
Forest regeneration - Hand planting	48	T05N R12E S17	
Forest regeneration - Hand planting	15	T05N R12E S18	
Forest regeneration - Hand planting	28	T05N R12E S32	
Forest regeneration - Hand planting	53	T06N R10E S12	
Forest regeneration - Hand planting	75	T06N R14E S22	
Forest regeneration - Hand planting	98	T06N R14E S36	
Klickitat HCP Planning Unit			
Silvicultural Activity	Acres	Location	FPA #
Forest regeneration - Hand planting	58	T06N R14E S36	
Vegetation management - Ground herbicide	44	T04N R12E S25	
Vegetation management - Ground herbicide	28	T04N R12E S25	
Vegetation management - Ground herbicide	28	T05N R12E S32	
Vegetation management - Ground herbicide	98	T06N R14E S36	
Vegetation management - Ground herbicide	58	T06N R14E S36	
North Puget HCP Planning Unit			
Silvicultural Activity	Acres	Location	FPA #
Timber Harvest - Clear cut	83	T23N R07E S16	2405677
Timber Harvest - Clear cut	6	T24N R07E S34	2406183
Timber Harvest - Clear cut	50	T24N R07E S34	2406183
Timber Harvest - Clear cut	74	T26N R08E S19	2405959
Timber Harvest - Clear cut	57	T28N R07E S01	2803254
Timber Harvest - Clear cut	38	T28N R07E S09	2803997

North Puget HCP Planning Unit			
Silvicultural Activity	Acres	Location	FPA #
Timber Harvest - Clear cut	21	T28N R07E S09	2803997
Timber Harvest - Clear cut	87	T28N R08E S05	2802389
Timber Harvest - Clear cut	29	T28N R08E S11	2802000
Timber Harvest - Clear cut	31	T28N R08E S11	2802000
Timber Harvest - Clear cut	57	T28N R08E S15	2803260
Timber Harvest - Clear cut	98	T28N R08E S16	2803253
Timber Harvest - Clear cut	52	T29N R08E S33	2802000
Timber Harvest - Clear cut	35	T29N R08E S33	2802000
Timber Harvest - Clear cut	28	T32N R06E S05	2801917
Timber Harvest - Clear cut	33	T32N R06E S07	2801917
Timber Harvest - Clear cut	15	T32N R06E S08	2801917
Timber Harvest - Clear cut	27	T34N R05E S09	2803257
Timber Harvest - Clear cut	14	T34N R05E S09	2803257
Timber Harvest - Clear cut	28	T34N R05E S09	2803257
Timber Harvest - Clear cut	71	T34N R05E S28	2804139
Timber Harvest - Clear cut	6	T34N R05E S28	2804139
Timber Harvest - Clear cut	26	T34N R05E S33	2804139
Timber Harvest - Clear cut	73	T35N R06E S01	2803847
Timber Harvest - Clear cut	91	T35N R06E S01	2802625
Timber Harvest - Clear cut	42	T35N R06E S02	2803847
Timber Harvest - Clear cut	78	T36N R06E S17	2801971
Timber Harvest - Clear cut	57	T36N R06E S34	2803737
Timber Harvest - Clear cut	36	T37N R04E S13	2804098
Timber Harvest - Clear cut	13	T37N R05E S02	2803010
Timber Harvest - Clear cut	18	T37N R05E S02	2803010
Timber Harvest - Clear cut	35	T37N R05E S02	2803010
Timber Harvest - Clear cut	17	T37N R05E S15	2803848
Timber Harvest - Clear cut	54	T37N R05E S19	2803194
Timber Harvest - Clear cut	58	T37N R05E S22	2803848
Timber Harvest - Clear cut	8	T37N R05E S22	2803848
Timber Harvest - Clear cut	43	T37N R05E S34	2804152
Timber Harvest - Clear cut	12	T37N R05E S34	2804152
Timber Harvest - Clear cut	42	T38N R05E S15	2804046
Timber Harvest - Clear cut	51	T38N R05E S15	2803423
Timber Harvest - Clear cut	42	T38N R05E S15	2804046
Timber Harvest - Clear cut	45	T38N R05E S21	2804046
Timber Harvest - Clear cut	59	T39N R05E S08	2803198
Timber Harvest - Clear cut	66	T40N R04E S36	2803212
Timber Harvest - Clear cut	17	T40N R05E S19	2803334
Timber Harvest - Clear cut	59	T40N R05E S26	2803339
Timber Harvest - Clear cut	12	T40N R05E S30	2803334
Timber Harvest - Clear cut	48	T40N R06E S27	2804184
Timber Harvest - Clear cut	26	T40N R06E S29	2803551
Timber Harvest - Clear cut	31	T40N R06E S29	2803551
Timber Harvest - Clear cut	34	T40N R06E S33	2802357
Timber Harvest - Clear cut	48	T40N R06E S33	2802357
Timber Harvest - Smallwood thinning	14	T27N R09E S13	2804231
Timber Harvest - Smallwood thinning	23	T27N R09E S13	2804231
Timber Harvest - Smallwood thinning	93	T27N R10E S07	2804231
Timber Harvest - Smallwood thinning	4	T28N R07E S13	2803751
Timber Harvest - Smallwood thinning	49	T28N R07E S13	2803751
Timber Harvest - Smallwood thinning	166	T28N R08E S15	2802603

North Puget HCP Planning Unit			
Silvicultural Activity	Acres	Location	FPA #
Timber Harvest - Uneven-aged management	12	T32N R08E S08	2801187
Forest site preparation - Aerial herbicide	31	T28N R08E S11	2804617
Forest site preparation - Aerial herbicide	29	T28N R08E S11	2804617
Forest site preparation - Aerial herbicide	74	T28N R09E S29	2804617
Forest site preparation - Aerial herbicide	4	T28N R09E S29	2804617
Forest site preparation - Aerial herbicide	34	T28N R09E S32	2804617
Forest site preparation - Aerial herbicide	90	T29N R07E S02	2804617
Forest site preparation - Aerial herbicide	7	T31N R06E S02	2804617
Forest site preparation - Aerial herbicide	6	T31N R06E S02	2804617
Forest site preparation - Aerial herbicide	9	T31N R06E S02	2804617
Forest site preparation - Aerial herbicide	51	T31N R06E S02	2804617
Forest site preparation - Aerial herbicide	43	T31N R06E S03	2804617
Forest site preparation - Aerial herbicide	23	T32N R06E S05	2804606
Forest site preparation - Aerial herbicide	30	T32N R06E S07	2804606
Forest site preparation - Aerial herbicide	15	T32N R06E S08	2804606
Forest site preparation - Aerial herbicide	36	T32N R06E S35	2804617
Forest site preparation - Aerial herbicide	23	T32N R06E S35	2804617
Forest site preparation - Aerial herbicide	15	T32N R06E S36	2804617
Forest site preparation - Aerial herbicide	18	T32N R06E S36	2804617
Forest site preparation - Aerial herbicide	38	T32N R06E S36	2804617
Forest site preparation - Aerial herbicide	7	T32N R06E S36	2804617
Forest site preparation - Aerial herbicide	24	T33N R05E S29	2804606
Forest regeneration - Hand planting	28	T23N R07E S03	
Forest regeneration - Hand planting	5	T23N R07E S03	
Forest regeneration - Hand planting	35	T23N R07E S16	
Forest regeneration - Hand planting	17	T23N R07E S16	
Forest regeneration - Hand planting	6	T24N R07E S34	
Forest regeneration - Hand planting	50	T24N R07E S34	
Forest regeneration - Hand planting	74	T26N R08E S19	
Forest regeneration - Hand planting	22	T27N R09E S13	
Forest regeneration - Hand planting	80	T27N R10E S07	
Forest regeneration - Hand planting	38	T28N R07E S09	
Forest regeneration - Hand planting	21	T28N R07E S09	
Forest regeneration - Hand planting	75	T28N R08E S05	
Forest regeneration - Hand planting	28	T28N R08E S11	
Forest regeneration - Hand planting	28	T28N R08E S11	
Forest regeneration - Hand planting	87	T28N R08E S16	
Forest regeneration - Hand planting	4	T28N R09E S29	
Forest regeneration - Hand planting	74	T28N R09E S29	
Forest regeneration - Hand planting	33	T28N R09E S32	
Forest regeneration - Hand planting	90	T29N R07E S02	
Forest regeneration - Hand planting	20	T29N R07E S03	
Forest regeneration - Hand planting	12	T30N R07E S21	
Forest regeneration - Hand planting	20	T30N R07E S21	
Forest regeneration - Hand planting	6	T31N R06E S02	
Forest regeneration - Hand planting	9	T31N R06E S02	
Forest regeneration - Hand planting	7	T31N R06E S02	
Forest regeneration - Hand planting	49	T31N R06E S02	
Forest regeneration - Hand planting	42	T31N R06E S03	
Forest regeneration - Hand planting	28	T31N R06E S12	
Forest regeneration - Hand planting	13	T31N R06E S23	
Forest regeneration - Hand planting	39	T31N R06E S23	

North Puget HCP Planning Unit			
Silvicultural Activity	Acres	Location	FPA #
Forest regeneration - Hand planting	13	T31N R06E S25	
Forest regeneration - Hand planting	2	T31N R06E S25	
Forest regeneration - Hand planting	38	T31N R06E S26	
Forest regeneration - Hand planting	2	T32N R05E S02	
Forest regeneration - Hand planting	20	T32N R06E S05	
Forest regeneration - Hand planting	27	T32N R06E S07	
Forest regeneration - Hand planting	14	T32N R06E S08	
Forest regeneration - Hand planting	36	T32N R06E S35	
Forest regeneration - Hand planting	23	T32N R06E S35	
Forest regeneration - Hand planting	18	T32N R06E S36	
Forest regeneration - Hand planting	7	T32N R06E S36	
Forest regeneration - Hand planting	15	T32N R06E S36	
Forest regeneration - Hand planting	37	T32N R06E S36	
Forest regeneration - Hand planting	27	T32N R07E S04	
Forest regeneration - Hand planting	6	T32N R07E S16	
Forest regeneration - Hand planting	32	T32N R07E S17	
Forest regeneration - Hand planting	53	T33N R05E S26	
Forest regeneration - Hand planting	4	T33N R05E S35	
Forest regeneration - Hand planting	25	T33N R06E S20	
Forest regeneration - Hand planting	41	T33N R07E S33	
Forest regeneration - Hand planting	16	T33N R07E S34	
Forest regeneration - Hand planting	4	T33N R10E S08	
Forest regeneration - Hand planting	14	T34N R05E S09	
Forest regeneration - Hand planting	24	T34N R05E S09	
Forest regeneration - Hand planting	26	T34N R05E S09	
Forest regeneration - Hand planting	91	T35N R06E S01	
Forest regeneration - Hand planting	50	T36N R06E S34	
Forest regeneration - Hand planting	31	T37N R04E S13	
Forest regeneration - Hand planting	43	T37N R05E S19	
Forest regeneration - Hand planting	8	T37N R05E S22	
Forest regeneration - Hand planting	19	T37N R05E S22	
Forest regeneration - Hand planting	19	T37N R05E S27	
Forest regeneration - Hand planting	35	T37N R05E S28	
Forest regeneration - Hand planting	9	T37N R05E S29	
Forest regeneration - Hand planting	4	T37N R05E S33	
Forest regeneration - Hand planting	21	T37N R05E S33	
Forest regeneration - Hand planting	9	T37N R05E S33	
Forest regeneration - Hand planting	42	T37N R05E S33	
Forest regeneration - Hand planting	14	T37N R05E S34	
Forest regeneration - Hand planting	38	T37N R05E S34	
Forest regeneration - Hand planting	17	T37N R05E S35	
Forest regeneration - Hand planting	42	T38N R05E S15	
Forest regeneration - Hand planting	41	T38N R05E S15	
Forest regeneration - Hand planting	48	T38N R05E S15	
Forest regeneration - Hand planting	45	T38N R05E S21	
Forest regeneration - Hand planting	76	T38N R05E S22	
Forest regeneration - Hand planting	12	T40N R05E S19	
Forest regeneration - Hand planting	57	T40N R05E S26	
Forest regeneration - Hand planting	9	T40N R05E S30	
Forest regeneration - Hand planting	38	T40N R06E S27	
Forest regeneration - Hand planting	24	T40N R06E S29	
Forest regeneration - Hand planting	20	T40N R06E S29	

North Puget HCP Planning Unit			
Silvicultural Activity	Acres	Location	FPA #
Forest regeneration - Natural regeneration	4	T32N R09E S21	
Forest regeneration - Natural regeneration	6	T32N R09E S22	
Forest regeneration - Natural regeneration	9	T32N R09E S22	
Forest regeneration - Natural regeneration	12	T37N R05E S34	
Vegetation management - Aerial herbicide	54	T27N R07E S17	2804608
Vegetation management - Aerial herbicide	47	T28N R07E S02	2804608
Vegetation management - Aerial herbicide	46	T28N R07E S02	2804608
Vegetation management - Aerial herbicide	38	T28N R07E S16	2804608
Vegetation management - Aerial herbicide	82	T28N R08E S18	2804608
Vegetation management - Aerial herbicide	47	T32N R06E S02	2804595
Vegetation management - Aerial herbicide	78	T32N R06E S02	2804595
Vegetation management - Aerial herbicide	23	T32N R06E S03	2804595
Vegetation management - Aerial herbicide	48	T32N R09E S04	2804595
Vegetation management - Aerial herbicide	41	T32N R09E S09	2804595
Vegetation management - Aerial herbicide	89	T32N R10E S06	2804595
Vegetation management - Aerial herbicide	44	T33N R05E S29	2804595
Vegetation management - Aerial herbicide	61	T33N R05E S30	2804595
Vegetation management - Aerial herbicide	44	T33N R06E S36	2804595
Vegetation management - Aerial herbicide	38	T33N R07E S28	2804595
Vegetation management - Aerial herbicide	63	T33N R07E S30	2804595
Vegetation management - Aerial herbicide	45	T33N R09E S36	2804595
Vegetation management - Aerial herbicide	46	T35N R05E S03	2804585
Vegetation management - Aerial herbicide	67	T35N R06E S32	2804595
Vegetation management - Aerial herbicide	104	T35N R06E S32	2804595
Vegetation management - Ground herbicide	15	T26N R07E S01	
Vegetation management - Ground herbicide	11	T26N R07E S02	
Vegetation management - Ground herbicide	6	T26N R07E S02	
Vegetation management - Ground herbicide	20	T26N R07E S24	
Vegetation management - Ground herbicide	74	T26N R08E S20	
Vegetation management - Ground herbicide	58	T27N R07E S30	
Vegetation management - Ground herbicide	32	T27N R08E S31	
Vegetation management - Ground herbicide	12	T30N R07E S21	
Vegetation management - Ground herbicide	8	T33N R10E S16	
Vegetation management - Ground herbicide	49	T33N R10E S21	
Vegetation management - Ground herbicide	9	T33N R10E S27	
Vegetation management - Ground herbicide	26	T37N R05E S04	
Vegetation management - Ground herbicide	3	T37N R05E S21	
Vegetation management - Ground herbicide	6	T37N R05E S32	
Vegetation management - Ground herbicide	4	T37N R05E S35	
Vegetation management - Ground herbicide	36	T38N R05E S14	
Vegetation management - Ground herbicide	86	T39N R05E S12	
Vegetation management - Ground herbicide	87	T40N R06E S27	
Vegetation management - Hand cutting	125	T23N R08E S07	
Vegetation management - Hand cutting	4	T27N R07E S17	
Vegetation management - Hand cutting	61	T28N R07E S36	
Vegetation management - Hand cutting	4	T28N R08E S05	
Vegetation management - Hand cutting	10	T28N R08E S07	
Vegetation management - Hand cutting	12	T28N R08E S08	
Vegetation management - Hand cutting	71	T28N R08E S18	
Vegetation management - Hand cutting	3	T28N R09E S20	
Vegetation management - Hand cutting	67	T29N R07E S24	
Vegetation management - Hand cutting	15	T29N R07E S34	

North Puget HCP Planning Unit			
Silvicultural Activity	Acres	Location	FPA #
Vegetation management - Hand cutting	22	T31N R06E S22	
Vegetation management - Hand cutting	51	T31N R06E S23	
Vegetation management - Hand cutting	91	T31N R07E S32	
Vegetation management - Hand cutting	30	T31N R07E S32	
Vegetation management - Hand cutting	99	T32N R05E S01	
Vegetation management - Hand cutting	60	T32N R06E S25	
Vegetation management - Hand cutting	19	T32N R06E S26	
Vegetation management - Hand cutting	42	T32N R06E S36	
Vegetation management - Hand cutting	26	T32N R06E S36	
Vegetation management - Hand cutting	36	T32N R08E S07	
Vegetation management - Hand cutting	42	T32N R08E S07	
Vegetation management - Hand cutting	5	T32N R08E S11	
Vegetation management - Hand cutting	1	T32N R08E S18	
Vegetation management - Hand cutting	48	T32N R09E S04	
Vegetation management - Hand cutting	43	T32N R09E S05	
Vegetation management - Hand cutting	52	T32N R09E S25	
Vegetation management - Hand cutting	5	T33N R10E S10	
Vegetation management - Hand cutting	7	T33N R10E S13	
Vegetation management - Hand cutting	31	T33N R10E S17	
Vegetation management - Hand cutting	39	T34N R05E S08	
Vegetation management - Hand cutting	43	T34N R05E S08	
Vegetation management - Hand cutting	75	T34N R05E S33	
Vegetation management - Hand cutting	3	T34N R09E S24	
Vegetation management - Hand cutting	16	T34N R09E S25	
Vegetation management - Hand cutting	38	T35N R09E S21	
Vegetation management - Hand cutting	4	T35N R09E S21	
Vegetation management - Hand cutting	30	T36N R04E S22	
Vegetation management - Hand cutting	84	T36N R05E S02	
Vegetation management - Hand cutting	54	T36N R05E S07	
Vegetation management - Hand cutting	10	T36N R05E S08	
Vegetation management - Hand cutting	65	T36N R06E S27	
Vegetation management - Hand cutting	45	T36N R07E S31	
Vegetation management - Hand cutting	93	T36N R07E S31	
Vegetation management - Hand cutting	45	T37N R04E S14	
Vegetation management - Hand cutting	15	T37N R04E S24	
Vegetation management - Hand cutting	45	T37N R05E S04	
Vegetation management - Hand cutting	69	T37N R05E S18	
Vegetation management - Hand cutting	57	T37N R05E S19	
Vegetation management - Hand cutting	42	T37N R05E S19	
Vegetation management - Hand cutting	70	T37N R05E S32	
Vegetation management - Hand cutting	37	T38N R05E S21	
Vegetation management - Hand cutting	13	T38N R05E S25	
Vegetation management - Hand cutting	20	T38N R05E S26	
Vegetation management - Hand cutting	7	T38N R05E S26	
Vegetation management - Hand cutting	39	T38N R05E S28	
Vegetation management - Hand cutting	36	T38N R05E S28	
Vegetation management - Hand cutting	6	T38N R05E S34	
Vegetation management - Hand cutting	64	T38N R05E S34	
Vegetation management - Hand cutting	27	T38N R05E S36	
Vegetation management - Hand cutting	12	T38N R06E S22	
Vegetation management - Hand cutting	12	T38N R06E S22	
Vegetation management - Hand cutting	29	T38N R06E S22	

North Puget HCP Planning Unit			
Silvicultural Activity	Acres	Location	FPA #
Vegetation management - Hand cutting	4	T38N R06E S22	
Vegetation management - Hand cutting	4	T38N R06E S22	
Vegetation management - Hand cutting	29	T38N R06E S27	
Vegetation management - Hand cutting	14	T38N R06E S31	
Vegetation management - Hand cutting	17	T39N R04E S02	
Vegetation management - Hand cutting	83	T39N R05E S09	
Vegetation management - Hand cutting	37	T40N R05E S16	
Vegetation management - Hand cutting	41	T40N R05E S16	
Vegetation management - Hand cutting	60	T40N R05E S21	
Vegetation management - Hand cutting	14	T40N R05E S32	
Vegetation management - Hand cutting	32	T40N R05E S32	
Vegetation management - Hand cutting	23	T40N R06E S36	
Pre-commercial thinning	4	T28N R08E S03	
Pre-commercial thinning	21	T28N R08E S03	
Pre-commercial thinning	62	T28N R08E S03	
Pre-commercial thinning	92	T28N R08E S03	
Pre-commercial thinning	61	T29N R07E S22	
Pre-commercial thinning	73	T32N R06E S14	
Pre-commercial thinning	45	T32N R06E S22	
Pre-commercial thinning	51	T32N R06E S22	
Pre-commercial thinning	77	T32N R06E S22	
Pre-commercial thinning	86	T32N R06E S22	
Pre-commercial thinning	90	T32N R06E S23	
Pre-commercial thinning	22	T32N R06E S24	
Pre-commercial thinning	95	T32N R06E S24	
Pre-commercial thinning	48	T32N R06E S25	
Pre-commercial thinning	48	T32N R06E S27	
Pre-commercial thinning	88	T32N R06E S27	
Pre-commercial thinning	61	T32N R06E S27	
Pre-commercial thinning	90	T32N R06E S34	
Pre-commercial thinning	65	T32N R07E S19	
Pre-commercial thinning	150	T33N R05E S08	
Pre-commercial thinning	32	T33N R05E S21	
Pre-commercial thinning	196	T33N R10E S24	
Pre-commercial thinning	55	T34N R05E S04	
Pre-commercial thinning	15	T34N R05E S05	
Pre-commercial thinning	3	T34N R05E S05	
Pre-commercial thinning	119	T34N R05E S08	
Pre-commercial thinning	39	T34N R05E S08	
Pre-commercial thinning	10	T34N R05E S08	
Pre-commercial thinning	22	T34N R05E S17	
Pre-commercial thinning	1	T35N R06E S01	
Pre-commercial thinning	96	T35N R07E S01	
Pre-commercial thinning	117	T35N R07E S01	
Pre-commercial thinning	132	T36N R03E S03	
Pre-commercial thinning	132	T36N R03E S03	
Pre-commercial thinning	87	T36N R04E S15	
Pre-commercial thinning	67	T36N R04E S15	
Pre-commercial thinning	88	T36N R04E S16	
Pre-commercial thinning	140	T36N R04E S16	
Pre-commercial thinning	131	T37N R04E S13	
Pre-commercial thinning	247	T37N R04E S13	

North Puget HCP Planning Unit			
Silvicultural Activity	Acres	Location	FPA #
Pre-commercial thinning	98	T37N R04E S25	
Pre-commercial thinning	4	T37N R05E S04	
Pre-commercial thinning	1	T37N R06E S06	
Pre-commercial thinning	61	T38N R05E S36	
Pre-commercial thinning	14	T38N R06E S19	
Pre-commercial thinning	13	T38N R06E S20	

OESF HCP Planning Unit			
Silvicultural Activity	Acres	Location	FPA #
Timber Harvest - Clear cut	15	T27N R12W S27	2601597
Timber Harvest - Clear cut	1	T27N R12W S28	2601597
Timber Harvest - Clear cut	1	T29N R13W S03	2604003
Timber Harvest - Clear cut	5	T29N R14W S25	2603078
Timber Harvest - Clear cut	3	T29N R14W S25	2603078
Timber Harvest - Clear cut	15	T29N R14W S26	2603078
Timber Harvest - Clear cut	5	T29N R14W S26	2603078
Timber Harvest - Clear cut	99	T30N R12W S21	2601283
Timber Harvest - Clear cut	29	T30N R12W S25	2601279
Timber Harvest - Clear cut	22	T30N R12W S25	2601279
Timber Harvest - Clear cut	60	T30N R12W S26	2601246
Timber Harvest - Clear cut	18	T30N R12W S35	2603067
Timber Harvest - Clear cut	22	T30N R12W S35	2603067
Timber Harvest - Clear cut	4	T30N R12W S36	2603067
Timber Harvest - Clear cut	4	T30N R12W S36	2603067
Timber Harvest - Clear cut	4	T30N R12W S36	2601281
Timber Harvest - Clear cut	5	T31N R13W S11	2600628
Timber Harvest - Clear cut	23	T31N R13W S11	2600628
Timber Harvest - Clear cut	52	T31N R13W S11	2600628
Timber Harvest - Clear cut	64	T31N R13W S12	2600628
Timber Harvest - Clear cut	10	T31N R13W S12	2600628
Timber Harvest - Clear cut	28	T31N R13W S14	2600628
Timber Harvest - Late rotation thinning	63	T30N R12W S26	2601281
Timber Harvest - Salvage cut	12	T27N R12W S27	2601597
Timber Harvest - Salvage cut	3	T30N R12W S32	2603923
Timber Harvest - Salvage cut	4	T30N R12W S32	2603923
Timber Harvest - Smallwood thinning	39	T27N R13W S03	201106
Timber Harvest - Smallwood thinning	21	T27N R13W S04	201106
Timber Harvest - Smallwood thinning	18	T27N R13W S05	201106
Timber Harvest - Smallwood thinning	20	T27N R13W S06	201106
Timber Harvest - Smallwood thinning	21	T27N R13W S06	201106
Timber Harvest - Smallwood thinning	46	T27N R13W S09	201106
Timber Harvest - Smallwood thinning	84	T28N R13W S12	215934
Timber Harvest - Smallwood thinning	38	T28N R13W S13	215934
Timber Harvest - Smallwood thinning	30	T28N R13W S13	215934
Timber Harvest - Smallwood thinning	62	T28N R13W S13	215934
Timber Harvest - Smallwood thinning	16	T28N R13W S13	215934
Timber Harvest - Smallwood thinning	119	T28N R13W S13	215934
Timber Harvest - Smallwood thinning	30	T28N R13W S13	215934
Timber Harvest - Smallwood thinning	29	T28N R13W S13	215934
Timber Harvest - Smallwood thinning	45	T28N R13W S14	215934
Timber Harvest - Smallwood thinning	55	T28N R13W S15	215644
Timber Harvest - Smallwood thinning	23	T30N R10W S30	2602968

OESF HCP Planning Unit			
Silvicultural Activity	Acres	Location	FPA #
Timber Harvest - Smallwood thinning	45	T30N R12W S21	2602968
Timber Harvest - Smallwood thinning	8	T30N R12W S21	2602968
Timber Harvest - Smallwood thinning	37	T30N R12W S34	2602968
Timber Harvest - Smallwood thinning	79	T30N R12W S35	2602968
Timber Harvest - Smallwood thinning	30	T30N R12W S36	2602968
Timber Harvest - Smallwood thinning	31	T32N R12W S29	2601475
Timber Harvest - Smallwood thinning	7	T32N R12W S29	2601475
Timber Harvest - Smallwood thinning	6	T32N R12W S29	2601475
Timber Harvest - Smallwood thinning	4	T32N R12W S32	2601475
Timber Harvest - Temporary retention first cut	48	T30N R11W S26	2603512
Timber Harvest - Temporary retention first cut	15	T30N R11W S26	2603512
Timber Harvest - Temporary retention first cut	7	T30N R11W S26	2603512
Timber Harvest - Temporary retention first cut	7	T30N R11W S26	2603512
Timber Harvest - Temporary retention first cut	31	T30N R11W S27	2603512
Timber Harvest - Temporary retention first cut	33	T30N R11W S27	2603512
Timber Harvest - Temporary retention first cut	11	T30N R11W S27	2603512
Timber Harvest - Temporary retention first cut	11	T31N R13W S12	2600628
Timber Harvest - Temporary retention first cut	29	T32N R13W S35	2601291
Forest regeneration - Hand planting	6	T26N R11W S20	
Forest regeneration - Hand planting	8	T26N R11W S20	
Forest regeneration - Hand planting	27	T27N R10W S27	
Forest regeneration - Hand planting	11	T27N R10W S28	
Forest regeneration - Hand planting	12	T27N R12W S27	
Forest regeneration - Hand planting	15	T27N R12W S27	
Forest regeneration - Hand planting	1	T27N R12W S28	
Forest regeneration - Hand planting	77	T29N R12W S09	
Forest regeneration - Hand planting	1	T29N R13W S03	
Forest regeneration - Hand planting	1	T29N R13W S03	
Forest regeneration - Hand planting	5	T29N R13W S16	
Forest regeneration - Hand planting	3	T29N R13W S16	
Forest regeneration - Hand planting	6	T30N R11W S26	
Forest regeneration - Hand planting	46	T30N R11W S26	
Forest regeneration - Hand planting	7	T30N R11W S26	
Forest regeneration - Hand planting	15	T30N R11W S26	
Forest regeneration - Hand planting	20	T30N R11W S27	
Forest regeneration - Hand planting	5	T30N R11W S27	
Forest regeneration - Hand planting	20	T30N R11W S27	
Forest regeneration - Hand planting	94	T30N R12W S21	
Forest regeneration - Hand planting	19	T30N R12W S25	
Forest regeneration - Hand planting	34	T30N R12W S26	
Forest regeneration - Hand planting	12	T30N R12W S34	
Forest regeneration - Hand planting	18	T30N R12W S35	
Forest regeneration - Hand planting	22	T30N R12W S35	
Forest regeneration - Hand planting	4	T30N R12W S36	
Forest regeneration - Hand planting	4	T30N R12W S36	
Forest regeneration - Hand planting	10	T30N R13W S30	
Forest regeneration - Hand planting	10	T30N R14W S25	
Forest regeneration - Hand planting	10	T30N R14W S36	
Forest regeneration - Hand planting	6	T31N R12W S08	
Forest regeneration - Hand planting	32	T31N R13W S01	
Forest regeneration - Hand planting	18	T31N R13W S02	
Forest regeneration - Hand planting	4	T31N R13W S02	

OESF HCP Planning Unit			
Silvicultural Activity	Acres	Location	FPA #
Forest regeneration - Hand planting	5	T31N R13W S11	
Forest regeneration - Hand planting	52	T31N R13W S11	
Forest regeneration - Hand planting	23	T31N R13W S11	
Forest regeneration - Hand planting	64	T31N R13W S12	
Forest regeneration - Hand planting	10	T31N R13W S12	
Forest regeneration - Hand planting	28	T31N R13W S14	
Forest regeneration - Hand planting	28	T31N R13W S14	
Forest regeneration - Hand planting	57	T31N R13W S14	
Forest regeneration - Hand planting	16	T32N R13W S16	
Forest regeneration - Hand planting	6	T32N R13W S16	
Forest regeneration - Hand planting	8	T32N R13W S29	
Forest regeneration - Hand planting	12	T32N R13W S31	
Forest regeneration - Hand planting	16	T32N R13W S35	
Forest regeneration - Natural regeneration	18	T30N R15W S34	
Vegetation management - Ground herbicide	36	T30N R12W S20	
Vegetation management - Ground herbicide	11	T30N R12W S21	
Vegetation management - Ground herbicide	47	T31N R12W S09	
Vegetation management - Ground herbicide	48	T31N R12W S16	
Vegetation management - Ground herbicide	6	T31N R12W S16	
Vegetation management - Hand cutting	18	T29N R13W S08	
Vegetation management - Hand cutting	7	T29N R13W S08	
Vegetation management - Hand cutting	5	T29N R13W S09	
Vegetation management - Hand cutting	8	T29N R13W S09	
Vegetation management - Hand cutting	3	T29N R13W S16	
Vegetation management - Hand cutting	7	T29N R13W S16	
Vegetation management - Hand cutting	5	T29N R13W S16	
Vegetation management - Hand cutting	2	T29N R13W S16	
Vegetation management - Hand cutting	8	T29N R13W S16	
Vegetation management - Hand cutting	14	T29N R13W S30	
Vegetation management - Hand cutting	24	T30N R10W S21	
Vegetation management - Hand cutting	47	T30N R10W S22	
Vegetation management - Hand cutting	36	T30N R10W S30	
Vegetation management - Hand cutting	7	T30N R11W S25	
Vegetation management - Hand cutting	5	T30N R11W S25	
Vegetation management - Hand cutting	7	T30N R11W S25	
Vegetation management - Hand cutting	92	T30N R12W S19	
Vegetation management - Hand cutting	72	T30N R12W S25	
Vegetation management - Hand cutting	7	T30N R12W S28	
Vegetation management - Hand cutting	7	T30N R12W S28	
Vegetation management - Hand cutting	10	T30N R12W S28	
Vegetation management - Hand cutting	9	T30N R12W S28	
Vegetation management - Hand cutting	23	T30N R12W S29	
Vegetation management - Hand cutting	11	T30N R12W S29	
Vegetation management - Hand cutting	79	T30N R12W S32	
Vegetation management - Hand cutting	83	T30N R12W S33	
Vegetation management - Hand cutting	7	T30N R12W S35	
Vegetation management - Hand cutting	21	T30N R13W S36	
Vegetation management - Hand cutting	81	T31N R11W S16	
Vegetation management - Hand cutting	48	T31N R12W S16	
Vegetation management - Hand cutting	5	T31N R13W S01	
Vegetation management - Hand cutting	8	T31N R13W S01	
Vegetation management - Hand cutting	13	T31N R13W S02	

OESF HCP Planning Unit			
Silvicultural Activity	Acres	Location	FPA #
Vegetation management - Hand cutting	4	T31N R13W S02	
Vegetation management - Hand cutting	5	T31N R13W S02	
Vegetation management - Hand cutting	2	T32N R12W S29	
Vegetation management - Hand cutting	16	T32N R12W S30	
Vegetation management - Hand cutting	5	T32N R12W S30	
Vegetation management - Hand cutting	2	T32N R12W S30	
Vegetation management - Hand cutting	5	T32N R12W S31	
Vegetation management - Hand cutting	5	T32N R12W S31	
Vegetation management - Hand cutting	88	T32N R13W S16	
Vegetation management - Hand cutting	3	T32N R13W S36	
Vegetation management - Hand cutting	3	T32N R13W S36	
Vegetation management - Hand cutting	5	T32N R13W S36	
Pre-commercial thinning	15	T24N R11W S31	
Pre-commercial thinning	65	T25N R11W S09	
Pre-commercial thinning	96	T25N R11W S21	
Pre-commercial thinning	7	T25N R11W S24	
Pre-commercial thinning	113	T25N R12W S03	
Pre-commercial thinning	38	T25N R12W S20	
Pre-commercial thinning	29	T25N R12W S31	
Pre-commercial thinning	51	T25N R13W S36	
Pre-commercial thinning	51	T25N R13W S36	
Pre-commercial thinning	61	T26N R09W S30	
Pre-commercial thinning	24	T26N R09W S31	
Pre-commercial thinning	11	T26N R10W S16	
Pre-commercial thinning	101	T26N R10W S26	
Pre-commercial thinning	99	T26N R10W S34	
Pre-commercial thinning	54	T26N R11W S24	
Pre-commercial thinning	142	T26N R11W S25	
Pre-commercial thinning	83	T26N R13W S16	
Pre-commercial thinning	10	T26N R13W S16	
Pre-commercial thinning	56	T26N R13W S16	
Pre-commercial thinning	102	T27N R13W S19	
Pre-commercial thinning	3	T28N R14W S02	
Pre-commercial thinning	5	T28N R14W S03	
Pre-commercial thinning	83	T28N R14W S03	
Pre-commercial thinning	17	T28N R14W S17	
Pre-commercial thinning	28	T28N R14W S17	
Pre-commercial thinning	87	T30N R12W S35	

South Coast HCP Planning Unit			
Silvicultural Activity	Acres	Location	FPA #
Timber Harvest - Clear cut	13	T10N R10W S16	2506841
Timber Harvest - Clear cut	46	T10N R10W S16	2506841
Timber Harvest - Clear cut	31	T11N R08W S21	2505645
Timber Harvest - Clear cut	4	T11N R08W S21	2505645
Timber Harvest - Clear cut	96	T12N R03W S16	2506134
Timber Harvest - Clear cut	6	T12N R08W S04	2506243
Timber Harvest - Clear cut	1	T12N R08W S04	2506243
Timber Harvest - Clear cut	5	T12N R08W S04	2506243
Timber Harvest - Clear cut	19	T12N R08W S04	2506243
Timber Harvest - Clear cut	24	T13N R07W S01	2507210
Timber Harvest - Clear cut	59	T13N R07W S02	

South Coast HCP Planning Unit			
Silvicultural Activity	Acres	Location	FPA #
Timber Harvest - Clear cut	55	T13N R07W S03	2505003
Timber Harvest - Clear cut	33	T13N R07W S18	2507530
Timber Harvest - Clear cut	41	T13N R07W S29	2506072
Timber Harvest - Clear cut	18	T13N R07W S31	2506072
Timber Harvest - Clear cut	17	T13N R07W S31	2506072
Timber Harvest - Clear cut	53	T13N R08W S07	2507783
Timber Harvest - Clear cut	16	T13N R08W S18	2506277
Timber Harvest - Clear cut	12	T13N R08W S28	2506153
Timber Harvest - Clear cut	10	T13N R08W S29	2506128
Timber Harvest - Clear cut	4	T13N R08W S29	2506128
Timber Harvest - Clear cut	18	T13N R08W S29	2506128
Timber Harvest - Clear cut	5	T13N R08W S29	2506128
Timber Harvest - Clear cut	4	T13N R08W S29	2506128
Timber Harvest - Clear cut	2	T13N R08W S29	2506128
Timber Harvest - Clear cut	3	T13N R08W S29	2506128
Timber Harvest - Clear cut	3	T13N R08W S30	2506128
Timber Harvest - Clear cut	45	T13N R08W S36	2505621
Timber Harvest - Clear cut	4	T13N R09W S36	2506134
Timber Harvest - Clear cut	9	T13N R09W S36	2506134
Timber Harvest - Clear cut	100	T13N R09W S36	2506134
Timber Harvest - Clear cut	65	T14N R03W S04	2507537
Timber Harvest - Clear cut	32	T15N R01E S08	2503744
Timber Harvest - Clear cut	57	T15N R01E S09	2503744
Timber Harvest - Clear cut	70	T15N R03W S31	2506135
Timber Harvest - Clear cut	69	T15N R05W S04	2502146
Timber Harvest - Clear cut	92	T16N R01W S36	2504859
Timber Harvest - Clear cut	60	T16N R03W S06	2504886
Timber Harvest - Clear cut	30	T16N R03W S07	2507179
Timber Harvest - Clear cut	5	T16N R03W S07	2507179
Timber Harvest - Clear cut	71	T16N R04W S03	2504408
Timber Harvest - Clear cut	36	T16N R04W S04	2507153
Timber Harvest - Clear cut	34	T16N R04W S10	2505747
Timber Harvest - Clear cut	51	T16N R05W S34	2502146
Timber Harvest - Clear cut	36	T17N R03W S31	2504886
Timber Harvest - Clear cut	87	T17N R04W S06	2507436
Timber Harvest - Clear cut	69	T17N R04W S34	2504408
Timber Harvest - Clear cut	87	T17N R05W S26	2507589
Timber Harvest - Clear cut	42	T17N R05W S35	2507589
Timber Harvest - Clear cut	38	T17N R05W S36	2597264
Timber Harvest - Clear cut	1	T18N R03W S34	2503523
Timber Harvest - Clear cut	25	T18N R04W S19	2507342
Timber Harvest - Clear cut	50	T18N R04W S23	2504387
Timber Harvest - Clear cut	36	T18N R04W S26	2504387
Timber Harvest - Clear cut	18	T19N R12W S16	2604098
Timber Harvest - Late rotation thinning	119	T12N R03W S25	2506865
Timber Harvest - Late rotation thinning	36	T16N R01W S34	2506327
Timber Harvest - Late rotation thinning	60	T16N R01W S34	2506327
Timber Harvest - Late rotation thinning	121	T18N R04W S29	2505159
Timber Harvest - Late rotation thinning	48	T18N R04W S30	2505159
Timber Harvest - Phased patch regeneration cut	32	T17N R03W S20	2506563
Timber Harvest - Selective product logging	54	T16N R03W S06	2504817
Timber Harvest - Selective product logging	36	T16N R03W S06	2504817

South Coast HCP Planning Unit			
Silvicultural Activity	Acres	Location	FPA #
Timber Harvest - Selective product logging	45	T17N R03W S32	2504817
Timber Harvest - Smallwood thinning	342	T14N R04W S01	2503564
Timber Harvest - Smallwood thinning	254	T15N R02W S05	2507197
Timber Harvest - Smallwood thinning	26	T16N R02W S32	2507197
Timber Harvest - Smallwood thinning	22	T17N R04W S20	2504411
Timber Harvest - Smallwood thinning	26	T17N R04W S20	2504411
Timber Harvest - Smallwood thinning	33	T19N R11W S36	2603205
Timber Harvest - Smallwood thinning	80	T19N R11W S36	2603205
Forest site preparation - Ground herbicide	58	T16N R05W S31	
Forest site preparation - Ground herbicide	9	T17N R05W S22	
Forest site preparation - Ground mechanical	9	T17N R05W S22	
Forest site preparation - Pile and burn	2	T14N R05W S04	
Forest regeneration - Hand planting	46	T10N R10W S16	
Forest regeneration - Hand planting	46	T10N R10W S16	
Forest regeneration - Hand planting	46	T10N R10W S16	
Forest regeneration - Hand planting	31	T11N R08W S21	
Forest regeneration - Hand planting	93	T12N R03W S16	
Forest regeneration - Hand planting	35	T13N R06W S06	
Forest regeneration - Hand planting	26	T13N R06W S06	
Forest regeneration - Hand planting	24	T13N R07W S01	
Forest regeneration - Hand planting	59	T13N R07W S02	
Forest regeneration - Hand planting	55	T13N R07W S03	
Forest regeneration - Hand planting	78	T13N R07W S11	
Forest regeneration - Hand planting	55	T13N R07W S13	
Forest regeneration - Hand planting	33	T13N R07W S18	
Forest regeneration - Hand planting	41	T13N R07W S29	
Forest regeneration - Hand planting	17	T13N R07W S31	
Forest regeneration - Hand planting	18	T13N R07W S31	
Forest regeneration - Hand planting	63	T14N R03W S04	
Forest regeneration - Hand planting	63	T14N R03W S10	
Forest regeneration - Hand planting	40	T14N R04W S12	
Forest regeneration - Hand planting	82	T14N R04W S13	
Forest regeneration - Hand planting	50	T14N R05W S01	
Forest regeneration - Hand planting	30	T14N R05W S04	
Forest regeneration - Hand planting	55	T14N R05W S23	
Forest regeneration - Hand planting	89	T15N R01E S08	
Forest regeneration - Hand planting	30	T15N R01E S08	
Forest regeneration - Hand planting	70	T15N R01E S08	
Forest regeneration - Hand planting	56	T15N R01E S09	
Forest regeneration - Hand planting	64	T15N R03W S31	
Forest regeneration - Hand planting	63	T15N R03W S31	
Forest regeneration - Hand planting	61	T15N R04W S18	
Forest regeneration - Hand planting	80	T15N R04W S36	
Forest regeneration - Hand planting	77	T15N R05W S04	
Forest regeneration - Hand planting	4	T16N R01W S29	
Forest regeneration - Hand planting	34	T16N R01W S29	
Forest regeneration - Hand planting	19	T16N R01W S32	
Forest regeneration - Hand planting	43	T16N R01W S32	
Forest regeneration - Hand planting	91	T16N R01W S36	
Forest regeneration - Hand planting	58	T16N R03W S06	
Forest regeneration - Hand planting	30	T16N R03W S07	
Forest regeneration - Hand planting	5	T16N R03W S07	

South Coast HCP Planning Unit			
Silvicultural Activity	Acres	Location	FPA #
Forest regeneration - Hand planting	46	T16N R04W S03	
Forest regeneration - Hand planting	36	T16N R04W S04	
Forest regeneration - Hand planting	51	T16N R04W S07	
Forest regeneration - Hand planting	31	T16N R04W S11	
Forest regeneration - Hand planting	22	T16N R04W S14	
Forest regeneration - Hand planting	27	T16N R04W S15	
Forest regeneration - Hand planting	21	T16N R04W S15	
Forest regeneration - Hand planting	33	T16N R04W S15	
Forest regeneration - Hand planting	8	T16N R04W S16	
Forest regeneration - Hand planting	5	T16N R05W S11	
Forest regeneration - Hand planting	58	T16N R05W S31	
Forest regeneration - Hand planting	56	T16N R05W S34	
Forest regeneration - Hand planting	13	T17N R03W S19	
Forest regeneration - Hand planting	59	T17N R03W S19	
Forest regeneration - Hand planting	30	T17N R03W S30	
Forest regeneration - Hand planting	33	T17N R03W S31	
Forest regeneration - Hand planting	24	T17N R03W S31	
Forest regeneration - Hand planting	23	T17N R03W S31	
Forest regeneration - Hand planting	2	T17N R04W S22	
Forest regeneration - Hand planting	67	T17N R04W S34	
Forest regeneration - Hand planting	29	T17N R04W S36	
Forest regeneration - Hand planting	16	T17N R05W S26	
Forest regeneration - Hand planting	38	T17N R05W S36	
Forest regeneration - Hand planting	1	T18N R03W S34	
Forest regeneration - Hand planting	23	T18N R04W S19	
Forest regeneration - Hand planting	45	T18N R04W S23	
Forest regeneration - Hand planting	17	T18N R04W S26	
Forest regeneration - Hand planting	33	T19N R10W S36	
Forest regeneration - Hand planting	17	T19N R12W S16	
Forest regeneration - Hand planting	7	T20N R10W S36	
Forest regeneration - Hand planting	22	T20N R10W S36	
Forest regeneration - Hand planting	33	T21N R10W S16	
Forest regeneration - Hand planting	75	T21N R10W S16	
Forest regeneration - Hand planting	5	T21N R10W S36	
Forest regeneration - Natural regeneration	4	T11N R08W S21	
Forest regeneration - Natural regeneration	31	T11N R08W S21	
Forest regeneration - Natural regeneration	34	T13N R08W S20	
Forest regeneration - Natural regeneration	25	T13N R08W S32	
Vegetation management - Aerial herbicide	15	T12N R03W S22	2508109
Vegetation management - Aerial herbicide	30	T12N R03W S34	2508109
Vegetation management - Aerial herbicide	30	T12N R03W S34	2508109
Vegetation management - Aerial herbicide	22	T13N R05W S08	2508109
Vegetation management - Aerial herbicide	24	T13N R05W S16	2508109
Vegetation management - Aerial herbicide	20	T13N R05W S17	2508109
Vegetation management - Aerial herbicide	12	T13N R05W S17	2508109
Vegetation management - Aerial herbicide	58	T13N R05W S17	2508109
Vegetation management - Aerial herbicide	6	T13N R05W S19	2508109
Vegetation management - Aerial herbicide	23	T13N R05W S19	2508109
Vegetation management - Aerial herbicide	23	T13N R05W S19	2508109
Vegetation management - Aerial herbicide	18	T13N R05W S19	2508109
Vegetation management - Aerial herbicide	1	T13N R05W S19	2508109
Vegetation management - Aerial herbicide	21	T13N R05W S20	2508109

South Coast HCP Planning Unit			
Silvicultural Activity	Acres	Location	FPA #
Vegetation management - Aerial herbicide	12	T13N R05W S20	2508109
Vegetation management - Aerial herbicide	30	T13N R05W S20	2508109
Vegetation management - Aerial herbicide	17	T13N R05W S20	2508109
Vegetation management - Aerial herbicide	9	T14N R01W S07	2508109
Vegetation management - Aerial herbicide	69	T14N R01W S07	2508109
Vegetation management - Aerial herbicide	50	T14N R03W S09	2509029
Vegetation management - Aerial herbicide	60	T14N R03W S14	2509029
Vegetation management - Aerial herbicide	30	T14N R03W S16	2509029
Vegetation management - Aerial herbicide	30	T14N R03W S16	2509029
Vegetation management - Aerial herbicide	10	T15N R01E S05	2508109
Vegetation management - Aerial herbicide	80	T15N R01E S05	2508109
Vegetation management - Aerial herbicide	50	T15N R01E S05	2508109
Vegetation management - Aerial herbicide	20	T16N R01E S30	2508109
Vegetation management - Aerial herbicide	30	T16N R01E S32	2508109
Vegetation management - Aerial herbicide	80	T16N R01W S34	2508109
Vegetation management - Aerial herbicide	60	T16N R04W S21	2507042
Vegetation management - Aerial herbicide	27	T17N R04W S04	2508109
Vegetation management - Aerial herbicide	76	T18N R04W S20	2507042
Vegetation management - Aerial herbicide	46	T18N R04W S33	2507043
Vegetation management - Ground herbicide	12	T12N R03W S22	
Vegetation management - Ground herbicide	45	T14N R03W S09	
Vegetation management - Ground herbicide	32	T14N R03W S16	
Vegetation management - Ground herbicide	15	T14N R03W S18	
Vegetation management - Ground herbicide	33	T14N R03W S18	
Vegetation management - Ground herbicide	60	T14N R03W S18	
Vegetation management - Ground herbicide	12	T14N R03W S19	
Vegetation management - Ground herbicide	26	T14N R03W S19	
Vegetation management - Ground herbicide	14	T14N R03W S20	
Vegetation management - Ground herbicide	53	T14N R03W S20	
Vegetation management - Ground herbicide	60	T14N R04W S01	
Vegetation management - Ground herbicide	55	T14N R04W S12	
Vegetation management - Ground herbicide	40	T14N R05W S11	
Vegetation management - Ground herbicide	97	T15N R04W S36	
Vegetation management - Ground herbicide	54	T16N R05W S28	
Vegetation management - Ground herbicide	94	T16N R05W S29	
Vegetation management - Ground herbicide	74	T16N R05W S34	
Vegetation management - Ground herbicide	4	T17N R04W S20	
Vegetation management - Ground herbicide	4	T17N R04W S20	
Vegetation management - Ground herbicide	3	T17N R04W S20	
Vegetation management - Ground herbicide	3	T17N R04W S20	
Vegetation management - Ground herbicide	4	T17N R04W S20	
Vegetation management - Ground herbicide	3	T17N R04W S20	
Vegetation management - Ground herbicide	53	T18N R04W S20	
Vegetation management - Ground herbicide	92	T18N R04W S21	
Vegetation management - Hand cutting	33	T10N R09W S03	
Vegetation management - Hand cutting	13	T11N R08W S35	
Vegetation management - Hand cutting	40	T11N R09W S33	
Vegetation management - Hand cutting	41	T11N R10W S16	
Vegetation management - Hand cutting	40	T13N R07W S27	
Vegetation management - Hand cutting	62	T14N R03W S06	
Vegetation management - Hand cutting	30	T14N R05W S02	
Vegetation management - Hand cutting	20	T15N R01W S02	

South Coast HCP Planning Unit			
Silvicultural Activity	Acres	Location	FPA #
Vegetation management - Hand cutting	36	T15N R03W S16	
Vegetation management - Hand cutting	34	T15N R03W S16	
Vegetation management - Hand cutting	35	T15N R04W S16	
Vegetation management - Hand cutting	32	T15N R04W S18	
Vegetation management - Hand cutting	123	T16N R03W S03	
Vegetation management - Hand cutting	80	T16N R03W S05	
Vegetation management - Hand cutting	58	T16N R04W S01	
Vegetation management - Hand cutting	48	T16N R04W S04	
Vegetation management - Hand cutting	51	T16N R04W S07	
Vegetation management - Hand cutting	42	T16N R04W S08	
Vegetation management - Hand cutting	71	T16N R04W S08	
Vegetation management - Hand cutting	64	T16N R04W S20	
Vegetation management - Hand cutting	77	T16N R04W S21	
Vegetation management - Hand cutting	37	T16N R04W S23	
Vegetation management - Hand cutting	38	T16N R04W S27	
Vegetation management - Hand cutting	80	T16N R04W S28	
Vegetation management - Hand cutting	13	T16N R05W S11	
Vegetation management - Hand cutting	18	T16N R05W S11	
Vegetation management - Hand cutting	74	T16N R05W S27	
Vegetation management - Hand cutting	64	T16N R05W S28	
Vegetation management - Hand cutting	20	T16N R05W S31	
Vegetation management - Hand cutting	39	T16N R05W S31	
Vegetation management - Hand cutting	4	T16N R05W S31	
Vegetation management - Hand cutting	43	T16N R05W S32	
Vegetation management - Hand cutting	32	T17N R03W S17	
Vegetation management - Hand cutting	24	T17N R03W S28	
Vegetation management - Hand cutting	14	T17N R03W S28	
Vegetation management - Hand cutting	92	T17N R04W S05	
Vegetation management - Hand cutting	51	T17N R04W S14	
Vegetation management - Hand cutting	65	T17N R04W S26	
Vegetation management - Hand cutting	42	T17N R04W S35	
Vegetation management - Hand cutting	43	T17N R04W S36	
Vegetation management - Hand cutting	93	T17N R04W S36	
Vegetation management - Hand cutting	50	T17N R05W S11	
Vegetation management - Hand cutting	57	T17N R05W S32	
Vegetation management - Hand cutting	74	T17N R05W S36	
Vegetation management - Hand cutting	72	T17N R06W S36	
Vegetation management - Hand cutting	24	T18N R03W S33	
Vegetation management - Hand cutting	3	T18N R04W S09	
Vegetation management - Hand cutting	3	T18N R04W S10	
Vegetation management - Hand cutting	15	T18N R04W S20	
Vegetation management - Hand cutting	1	T18N R04W S25	
Vegetation management - Hand cutting	36	T18N R04W S27	
Vegetation management - Hand cutting	3	T18N R04W S33	
Vegetation management - Hand cutting	2	T18N R04W S33	
Vegetation management - Hand cutting	44	T18N R04W S34	
Vegetation management - Hand cutting	45	T18N R05W S35	
Vegetation management - Hand cutting	29	T18N R05W S35	
Vegetation management - Hand cutting	22	T18N R06W S36	
Vegetation management - Hand cutting	15	T18N R11W S16	
Vegetation management - Hand cutting	8	T20N R10W S16	
Pre-commercial thinning	107	T16N R05W S05	

South Coast HCP Planning Unit			
Silvicultural Activity	Acres	Location	FPA #
Pre-commercial thinning	143	T16N R05W S05	
Pre-commercial thinning	46	T17N R04W S23	
Pre-commercial thinning	172	T17N R04W S25	
Pre-commercial thinning	52	T17N R04W S25	
Pre-commercial thinning	53	T17N R04W S26	
Pre-commercial thinning	73	T17N R05W S13	
Pre-commercial thinning	42	T17N R05W S24	
Pre-commercial thinning	41	T17N R05W S24	
Pre-commercial thinning	84	T17N R05W S35	
Pre-commercial thinning	149	T17N R06W S25	
Pre-commercial thinning	51	T18N R04W S26	
Pre-commercial thinning	35	T18N R05W S36	
South Puget HCP Planning Unit			
Silvicultural Activity	Acres	Location	FPA #
Timber Harvest - Clear cut	40	T15N R05E S01	2406420
Timber Harvest - Clear cut	66	T15N R05E S01	2405780
Timber Harvest - Clear cut	37	T15N R05E S12	2405780
Timber Harvest - Clear cut	65	T15N R05E S12	2405780
Timber Harvest - Clear cut	77	T15N R05E S18	2407074
Timber Harvest - Clear cut	39	T16N R05E S32	2406538
Timber Harvest - Clear cut	86	T16N R05E S35	2407562
Timber Harvest - Clear cut	42	T18N R03W S34	2503523
Timber Harvest - Clear cut	38	T18N R03W S34	2503523
Timber Harvest - Clear cut	60	T18N R04W S23	2504387
Timber Harvest - Clear cut	17	T18N R04W S23	2504387
Timber Harvest - Clear cut	43	T18N R04W S24	2504387
Timber Harvest - Clear cut	19	T21N R07E S16	2406422
Timber Harvest - Clear cut	65	T21N R07E S16	2406422
Timber Harvest - Clear cut	1	T21N R07E S20	2408168
Timber Harvest - Clear cut	1	T21N R07E S20	2408168
Timber Harvest - Clear cut	2	T24N R01W S18	2407682
Timber Harvest - Clear cut	10	T24N R01W S18	2407682
Timber Harvest - Clear cut	7	T24N R01W S18	2407682
Timber Harvest - Clear cut	75	T25N R01W S33	2406638
Timber Harvest - Late rotation thinning	46	T20N R02W S36	2407439
Timber Harvest - Salvage cut	44	T18N R03W S04	2508042
Timber Harvest - Salvage cut	21	T18N R03W S04	2508042
Forest regeneration - Hand planting	66	T15N R05E S01	
Forest regeneration - Hand planting	37	T15N R05E S12	
Forest regeneration - Hand planting	65	T15N R05E S12	
Forest regeneration - Hand planting	27	T15N R05E S13	
Forest regeneration - Hand planting	39	T16N R05E S32	
Forest regeneration - Hand planting	9	T16N R05E S32	
Forest regeneration - Hand planting	34	T16N R05E S32	
Forest regeneration - Hand planting	86	T16N R05E S35	
Forest regeneration - Hand planting	4	T18N R03W S20	
Forest regeneration - Hand planting	28	T18N R03W S27	
Forest regeneration - Hand planting	40	T18N R03W S34	
Forest regeneration - Hand planting	38	T18N R03W S34	
Forest regeneration - Hand planting	26	T18N R04W S23	
Forest regeneration - Hand planting	15	T18N R04W S23	
Forest regeneration - Hand planting	31	T18N R04W S24	

South Puget HCP Planning Unit			
Silvicultural Activity	Acres	Location	FPA #
Forest regeneration - Hand planting	53	T21N R01W S06	
Forest regeneration - Hand planting	65	T21N R07E S16	
Forest regeneration - Hand planting	19	T21N R07E S16	
Forest regeneration - Hand planting	12	T21N R07E S17	
Forest regeneration - Hand planting	37	T21N R07E S20	
Forest regeneration - Hand planting	33	T21N R07E S20	
Forest regeneration - Hand planting	11	T22N R01W S16	
Forest regeneration - Hand planting	40	T22N R01W S16	
Forest regeneration - Hand planting	33	T22N R01W S31	
Forest regeneration - Hand planting	49	T23N R02W S28	
Forest regeneration - Hand planting	42	T23N R02W S33	
Forest regeneration - Hand planting	2	T24N R01W S18	
Forest regeneration - Hand planting	10	T24N R01W S18	
Forest regeneration - Hand planting	7	T24N R01W S18	
Forest regeneration - Hand planting	72	T24N R02W S15	
Forest regeneration - Hand planting	75	T25N R01W S33	
Forest regeneration - Natural regeneration	65	T19N R04E S36	
Forest regeneration - Natural regeneration	25	T23N R02W S15	
Vegetation management - Aerial herbicide	40	T16N R01E S30	2508109
Vegetation management - Hand cutting	43	T14N R06E S04	
Vegetation management - Hand cutting	44	T15N R05E S10	
Vegetation management - Hand cutting	47	T15N R05E S11	
Vegetation management - Hand cutting	37	T15N R05E S16	
Vegetation management - Hand cutting	165	T15N R05E S21	
Vegetation management - Hand cutting	78	T15N R05E S21	
Vegetation management - Hand cutting	17	T18N R03W S04	
Vegetation management - Hand cutting	54	T18N R03W S09	
Vegetation management - Hand cutting	17	T18N R03W S19	
Vegetation management - Hand cutting	49	T18N R03W S26	
Vegetation management - Hand cutting	4	T18N R03W S27	
Vegetation management - Hand cutting	51	T18N R03W S30	
Vegetation management - Hand cutting	2	T18N R03W S33	
Vegetation management - Hand cutting	48	T18N R03W S35	
Vegetation management - Hand cutting	8	T18N R03W S36	
Vegetation management - Hand cutting	5	T18N R04W S10	
Vegetation management - Hand cutting	7	T18N R04W S10	
Vegetation management - Hand cutting	15	T18N R04W S13	
Vegetation management - Hand cutting	63	T18N R04W S14	
Vegetation management - Hand cutting	39	T18N R04W S15	
Vegetation management - Hand cutting	9	T18N R04W S25	
Vegetation management - Hand cutting	18	T21N R07E S16	
Vegetation management - Hand cutting	3	T21N R07E S36	
Vegetation management - Hand cutting	7	T21N R08E S04	
Vegetation management - Hand cutting	48	T21N R08E S09	
Vegetation management - Hand cutting	2	T21N R08E S10	
Vegetation management - Hand cutting	17	T21N R08E S22	
Vegetation management - Hand cutting	7	T21N R08E S22	

South Puget HCP Planning Unit			
Silvicultural Activity	Acres	Location	FPA #
Vegetation management - Hand cutting	15	T22N R07E S36	
Vegetation management - Hand cutting	28	T23N R06E S11	

Straits HCP Planning Unit			
Silvicultural Activity	Acres	Location	FPA #
Timber Harvest - Clear cut	58	T23N R03W S09	2407561
Timber Harvest - Clear cut	61	T23N R04W S15	2406619
Timber Harvest - Clear cut	72	T23N R04W S16	2406744
Timber Harvest - Clear cut	45	T23N R04W S23	2406745
Timber Harvest - Clear cut	26	T23N R04W S24	2406745
Timber Harvest - Clear cut	18	T24N R03W S01	2405560
Timber Harvest - Clear cut	47	T29N R01W S16	2603875
Timber Harvest - Clear cut	19	T29N R01W S16	2603875
Timber Harvest - Clear cut	66	T29N R05W S10	2603783
Timber Harvest - Clear cut	17	T30N R04W S30	2603783
Timber Harvest - Clear cut	24	T30N R05W S23	2603207
Timber Harvest - Clear cut	32	T31N R09W S30	2603388
Timber Harvest - Clear cut	66	T31N R09W S31	2603388
Timber Harvest - Selective product logging	303	T23N R04W S21	2405676
Forest regeneration - Hand planting	118	T26N R02W S11	
Forest regeneration - Hand planting	49	T27N R01W S08	
Forest regeneration - Hand planting	48	T28N R01W S21	
Forest regeneration - Hand planting	40	T28N R01W S21	
Forest regeneration - Hand planting	13	T29N R02W S17	
Forest regeneration - Hand planting	25	T29N R02W S19	
Forest regeneration - Hand planting	52	T29N R02W S20	
Forest regeneration - Hand planting	16	T29N R02W S21	
Forest regeneration - Hand planting	25	T29N R02W S21	
Forest regeneration - Hand planting	80	T29N R04W S06	
Forest regeneration - Hand planting	39	T29N R04W S08	
Forest regeneration - Hand planting	11	T30N R04W S29	
Forest regeneration - Hand planting	21	T30N R04W S29	
Forest regeneration - Hand planting	24	T30N R04W S29	
Forest regeneration - Hand planting	17	T30N R04W S30	
Forest regeneration - Hand planting	35	T30N R05W S24	
Forest regeneration - Hand planting	21	T30N R08W S20	
Forest regeneration - Hand planting	89	T30N R09W S06	
Forest regeneration - Hand planting	64	T31N R09W S30	
Forest regeneration - Hand planting	79	T31N R09W S31	
Forest regeneration - Hand planting	37	T31N R09W S33	
Forest regeneration - Hand planting	9	T31N R10W S36	
Vegetation management - Ground herbicide	58	T29N R04W S07	
Vegetation management - Ground herbicide	21	T30N R04W S29	
Vegetation management - Ground herbicide	24	T30N R04W S29	
Vegetation management - Ground herbicide	11	T30N R04W S29	
Vegetation management - Ground herbicide	83	T30N R04W S32	
Vegetation management - Ground herbicide	25	T30N R05W S31	
Vegetation management - Ground herbicide	9	T30N R06W S18	
Vegetation management - Ground herbicide	80	T30N R06W S19	
Vegetation management - Ground herbicide	82	T30N R08W S13	
Vegetation management - Ground herbicide	79	T31N R08W S27	
Vegetation management - Hand cutting	94	T28N R01E S07	

Straits HCP Planning Unit			
Silvicultural Activity	Acres	Location	FPA #
Vegetation management - Hand cutting	55	T28N R02W S02	
Vegetation management - Hand cutting	11	T28N R02W S36	
Vegetation management - Hand cutting	10	T28N R02W S36	
Vegetation management - Hand cutting	12	T28N R02W S36	
Vegetation management - Hand cutting	25	T28N R02W S36	
Vegetation management - Hand cutting	3	T28N R02W S36	
Vegetation management - Hand cutting	2	T28N R02W S36	
Vegetation management - Hand cutting	7	T28N R02W S36	
Vegetation management - Hand cutting	18	T29N R02W S05	
Vegetation management - Hand cutting	6	T29N R02W S05	
Vegetation management - Hand cutting	31	T29N R02W S05	
Vegetation management - Hand cutting	3	T29N R02W S05	
Vegetation management - Hand cutting	121	T29N R03W S07	
Vegetation management - Hand cutting	92	T29N R04W S06	
Vegetation management - Hand cutting	94	T29N R05W S15	
Vegetation management - Hand cutting	28	T30N R04W S32	
Vegetation management - Hand cutting	8	T30N R04W S33	
Vegetation management - Hand cutting	16	T30N R04W S33	
Vegetation management - Hand cutting	2	T30N R04W S35	
Vegetation management - Hand cutting	33	T30N R04W S35	
Vegetation management - Hand cutting	13	T30N R04W S35	
Vegetation management - Hand cutting	30	T30N R05W S31	
Vegetation management - Hand cutting	6	T30N R07W S24	
Vegetation management - Hand cutting	69	T30N R08W S05	
Vegetation management - Hand cutting	81	T30N R08W S11	
Vegetation management - Hand cutting	56	T30N R08W S12	
Vegetation management - Hand cutting	9	T30N R08W S12	
Vegetation management - Hand cutting	8	T30N R09W S06	
Vegetation management - Hand cutting	48	T30N R09W S09	
Vegetation management - Hand cutting	56	T31N R09W S30	
Vegetation management - Hand cutting	57	T31N R09W S31	
Vegetation management - Hand cutting	60	T31N R09W S31	
Vegetation management - Hand cutting	73	T31N R09W S32	
Vegetation management - Hand cutting	33	T31N R09W S32	
Vegetation management - Hand cutting	45	T31N R09W S32	
Vegetation management - Hand cutting	75	T31N R10W S35	

Yakima HCP Planning Unit			
Silvicultural Activity	Acres	Location	FPA #
Timber Harvest - Seed tree intermediate cut	55	T19N R20E S08	2701615
Timber Harvest - Seed tree intermediate cut	90	T19N R20E S08	2701615
Timber Harvest - Seed tree intermediate cut	50	T19N R20E S08	2701615
Timber Harvest - Seed tree intermediate cut	18	T20N R19E S02	2701239
Timber Harvest - Seed tree intermediate cut	33	T20N R19E S02	2701239
Timber Harvest - Shelterwood intermediate cut	12	T13N R15E S16	2700817
Timber Harvest - Shelterwood intermediate cut	23	T13N R15E S16	2700817
Timber Harvest - Shelterwood intermediate cut	227	T13N R15E S16	2700817
Timber Harvest - Shelterwood intermediate cut	22	T20N R19E S02	2701239
Timber Harvest - Shelterwood intermediate cut	41	T20N R19E S02	2701239
Timber Harvest - Uneven-aged management	50	T17N R16E S32	2701633
Timber Harvest - Uneven-aged management	4	T17N R16E S32	2701633
Timber Harvest - Uneven-aged management	47	T20N R19E S14	2701239

Yakima HCP Planning Unit			
Silvicultural Activity	Acres	Location	FPA #
Timber Harvest - Uneven-aged management	60	T21N R20E S36	2700873
Timber Harvest - Uneven-aged management	37	T21N R20E S36	2700873
Timber Harvest - Uneven-aged management	37	T21N R20E S36	2700873
Forest site preparation - Ground mechanical	50	T19N R20E S08	
Forest site preparation - Ground mechanical	55	T19N R20E S08	
Forest site preparation - Pile and burn	14	T13N R14E S34	
Forest regeneration - Hand planting	80	T12N R14E S06	
Forest regeneration - Hand planting	85	T13N R14E S32	
Forest regeneration - Hand planting	92	T13N R14E S34	
Forest regeneration - Hand planting	55	T19N R20E S08	
Forest regeneration - Hand planting	90	T19N R20E S08	
Forest regeneration - Hand planting	11	T20N R20E S10	
Forest regeneration - Hand planting	11	T20N R20E S16	
Forest regeneration - Hand planting	14	T20N R20E S16	
Forest regeneration - Hand planting	55	T20N R20E S20	
Vegetation management - Ground herbicide	55	T19N R20E S08	