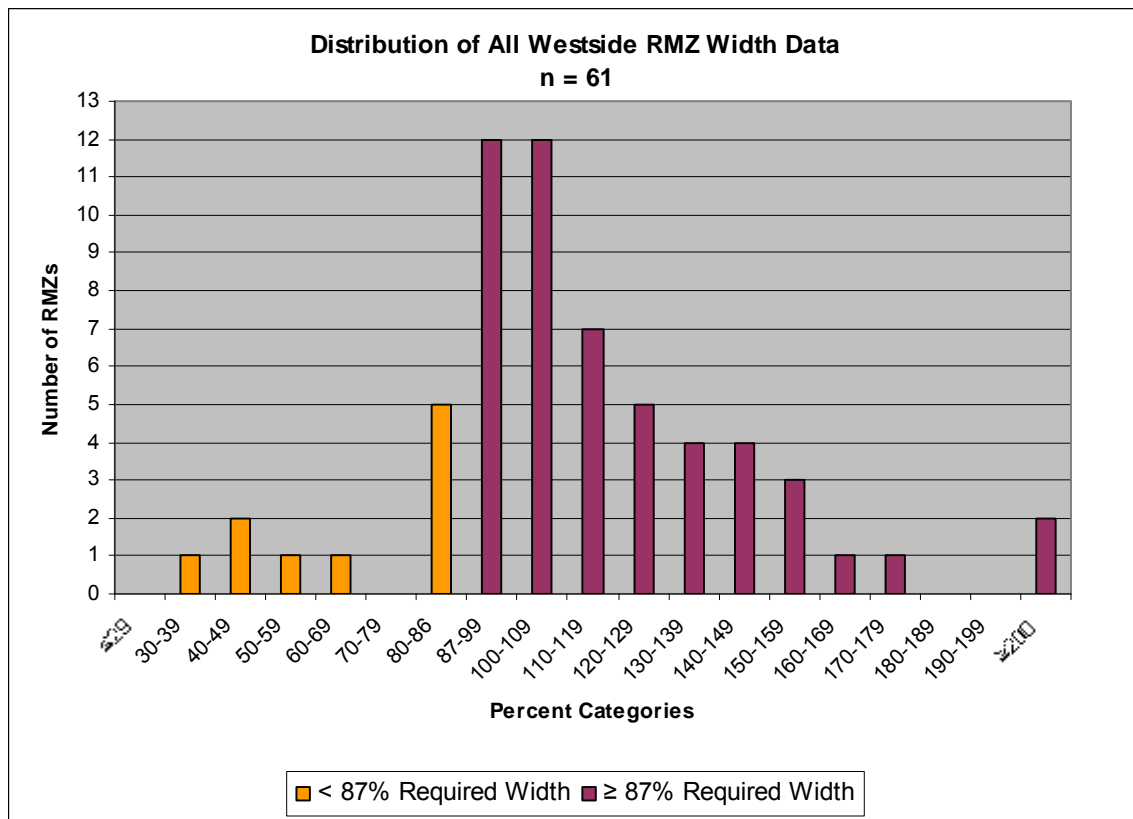


# Habitat Conservation Plan for State Trust Lands 2006 Implementation Monitoring Report Errata

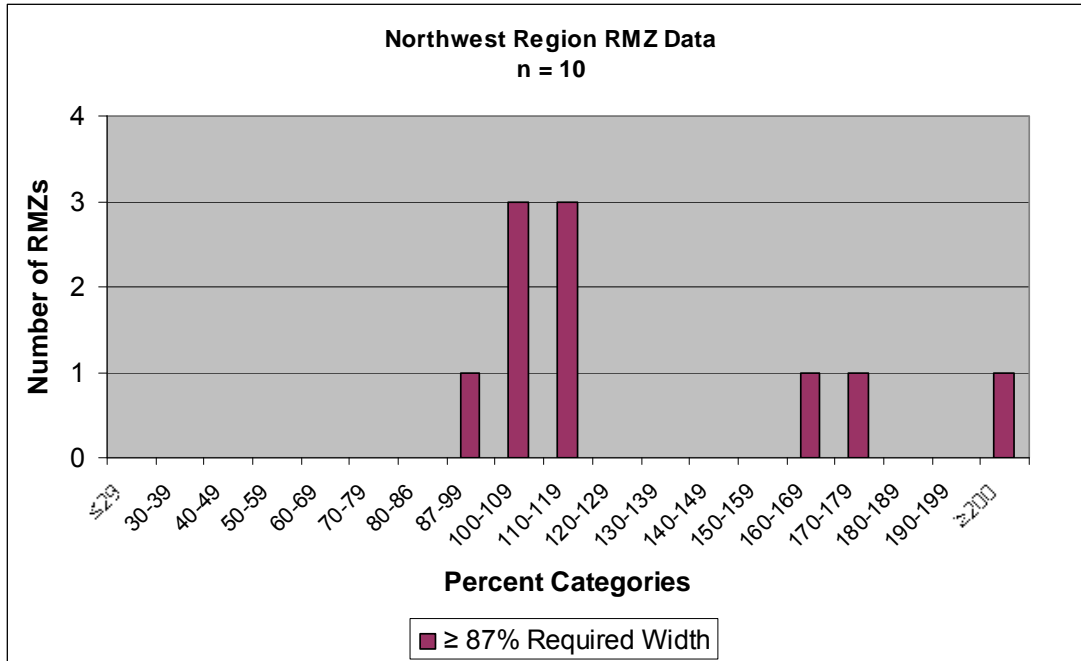
## NORTHWEST REGION

The following is a correction to the 2006 implementation monitoring report. We found a mistake in data collection where an RMZ was improperly reported to be narrower than it actually was on the ground. On page 17 of the original report it states “one RMZ was less than 87 percent of the required width.” This should be changed to the following: In Northwest Region, all measured RMZs were  $\geq 87$  percent (Figure 3.2).

Figures 3.1 and 3.2 and Table 3.1 (pages 17-18) should reflect the following corrected results.



**Figure 3.1.** Distribution of all Western Washington 2006 RMZ width compliance data



**Figure 3.2.** Distribution of Northwest Region 2006 RMZ compliance data

**Table 3.1.** Northwest Region RMZ data for individual timber sales.

Timber Sale Name	Measured Width (in feet)	Required Width (in feet)	Additional Average Width (in feet) Required to be Compliant	Percent Required Width Applied	Compliant?
<b>Back Hat</b>	112	100	-	112	Yes
	465	153	-	304	Yes
<b>Capriccio</b>	110	100	-	110	Yes
	139	144	-	97	Yes
<b>Chipper</b>	162	100	-	162	Yes
	158	158	-	100	Yes
	166	158	-	105	Yes
<b>Loquat</b>	271	152	-	178	Yes
<b>Waterworks</b>	102	100	-	102	Yes
<b>Zinfandel</b>	170	153	-	111	Yes