



Public Auction Sale of Timber

April 2022

Book 1034



IMPORTANT NOTICES

Natural Resources (DNR)

Governmental Regulatory Actions or Orders

The purchaser assumes the risk of liabilities related to regulatory actions or orders by any government agency that may affect the operability of these timber sales. Such regulatory actions or orders include, but are not limited to, actions taken pursuant to the State Forest Practices Act, Chapter 76.09 RCW, and the Federal Endangered Species Act, 16 U.S.C. §§ 1531-1544. Please see timber sale contract clauses G-066 and G-220 for further information.

Threatened and Endangered Species

DNR cannot verify the presence or absence of any threatened or endangered species that may affect the operability of the timber sale. Purchasers must rely on their own assessments.

Export Restricted

All timber purchased under these state DNR contracts shall not be exported outside of the United States until the timber has been processed. Purchasers shall not violate any of the prohibitions in WAC 240-15-015 (relating to the prohibitions on export and substitution), WAC 240-15-025 (relating to reporting requirements), and WAC 240-15-030 (relating to enforcement). If purchasers knowingly violate WAC 240-15-015, purchasers shall be barred from bidding on or purchasing export restricted timber as provided.

Cover photos

Timber Sales in this book are from state trust lands, managed to help build K-12 public schools, state universities, colleges, prisons, mental hospitals, the state Capitol; and to support local services in many counties.

Top right: Landscape view of DNR-managed trust lands in western Washington. Photo courtesy of DNR staff.

Second down right: Timber harvest operations on DNR-managed trust land. Photo courtesy of DNR staff.

Third down right: Log truck loaded with timber harvested from DNR-managed trust land. Photo courtesy of DNR staff.

Bottom right: Marcus Whitman Elementary School in Richland Washington. Photo courtesy of Richland School District.

Bottom middle: Storytime at the Shelton Timberland Library. Photo courtesy of Timberland Regional Library.

Bottom left: Douglas-fir seedlings growing at the Webster Nursery. Many of these seedlings will be planted following timber harvest on DNR-managed trust lands. Photo courtesy of DNR staff.

Table of Contents

Certification Opportunities for DNR Timber Purchasers	Page 3
Bidder/Purchaser Auction and Bidding Information	Page 5
Summary of All Sales Being Offered in April	Page 9
BBQ Heat Low	Page 11
Q Cassner Creek	Page 17
Q South Jumbo Sorts	Page 25
Striped Fly	Page 33
Sealed Bid Form and Instructions	Page 37
Statewide Bid Bond and Instructions	Page 39
Timber Sale per Sale Bid Bond and Instructions	Page 43
Log Sort Sealed Bid Form and Instructions	Page 47



Certification Opportunities for DNR Timber Purchasers

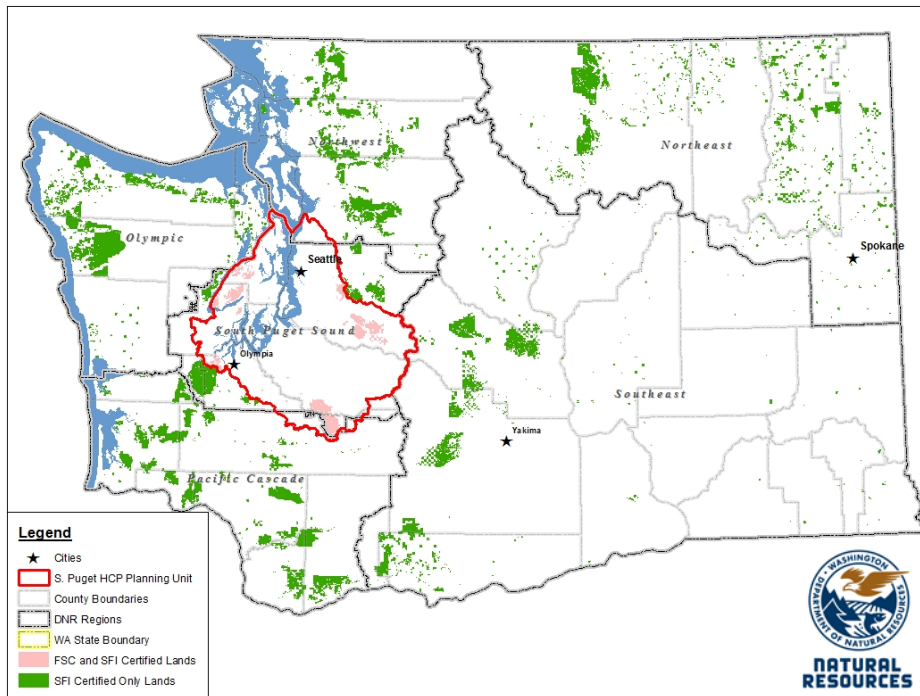
Certified forests are grown to an approved set of standards which demonstrate environmentally responsible, socially beneficial, and economically viable management practices that promote responsible forestry. This unique commitment to responsible forestry recognizes that forest landowners play a critical role in ensuring the long-term health and sustainability of our forests.

Forest Stewardship Council® (FSC®) is an independent, non-profit organization that promotes responsible management of the world's working forests through the development of forest management standards, a voluntary certification system, and trademarks that provide recognition and value to products bearing the FSC label in the marketplace. FSC standards ensure forestry is practiced in an environmentally responsible, socially beneficial, and economically viable way.

Sustainable Forestry Initiative Inc. is an independent, non-profit organization internationally endorsed and accepted around the world. The Sustainable Forestry Initiative® (SFI) program is based on the premise that responsible environmental behavior and sound business decisions can coexist. Its three-chamber Board of Directors governs all aspects of the SFI® program, with equal representation from the environmental, economic, and social sectors.

Currently, all Department of Natural Resources (DNR)-managed forestlands and conservation areas in Washington State are certified under the SFI program Standard. Forestlands within DNR's South Puget Habitat Conservation Plan Planning Unit, located within parts of King, Pierce, Thurston, Lewis, Kitsap, and Mason counties, are dually certified under both the FSC-US Forest Management Standard and the SFI program Standard.

Certification under each standard involves an inspection audit of the landowner's forest management activities by an independent, accredited third-party to verify that it meets specified forest management principles. If the forest unit complies with the specific standard, the landowner receives a certificate of conformance ensuring that responsible forestry is being practiced. Both standards encourage integration of perpetual growing and harvesting of trees with strong measures to protect wildlife, plants, soil, water, and air quality. Both standards provide a seal of approval that forests certified under these principles are well-managed. The global marketplace recognizes and endorses multiple forest certification standards. Each standard has individual market niches. By being dually certified, DNR can maximize its customer base and provide choices to the consumer.



DNR's FSC certificate number is: BV-FM/COC-080501

DNR's SFI certificate number is: PwC-SFIFM-513

DNR-managed forestlands within the South Puget Habitat Conservation Plan Planning Unit (located within parts of King, Pierce, Thurston, Lewis, Kitsap, and Mason counties) are certified as being in compliance with the Forest Stewardship US Forest Management Standard.

To learn more about chain of custody and demonstrating that your timber is derived from a responsibly managed forest and/or to learn more about becoming a participant in the FSC Program, visit <https://us.fsc.org/>.

To learn more about DNR timber sales certified under the FSC Standard, visit www.dnr.wa.gov.

FSC A.C. owns all right, title, and interest in and to the Forest Stewardship Council trademarks.

All DNR-managed forested state trust lands across the state have been certified as being in compliance with the Sustainable Forestry Initiative Forest Management Standard.

To learn more about chain of custody and demonstrating that your timber is derived from a responsibly managed forest and/or to learn more about becoming a participant in the SFI program, visit www.sfiprogram.org.

To learn more about DNR timber sales certified under the SFI program Standard, visit www.dnr.wa.gov.

SFI Marks are registered marks owned by Sustainable Forestry Initiative Inc.

To learn more about certification on DNR-managed forested state trust lands, visit <https://www.dnr.wa.gov/programs-and-services/product-sales-and-leasing/timber-sales/forest-certification> or contact:

Product Sales & Leasing Division, Product Sales Section:

Koshare Eagle, Assistant Division Manager, 360-902-1561, koshare.eagle@dnr.wa.gov
 Steve Teitzel, Operations, 360-902-1741, steve.teitzel@dnr.wa.gov

Forest Resources Division, HCP and Scientific Consultation Section:

Allen Estep, Assistant Division Manager, 360-902-2898, allen.estep@dnr.wa.gov
 Nicole Jacobsen, Forest Certification Program Lead, 360-902-1283, nicole.jacobsen@dnr.wa.gov

Washington State Department of Natural Resources (DNR)

Bidder's/Purchaser's Inspection of Sale Area and Forest Products

Acreage estimates and volume estimates contained within each timber notice of sale and each timber sale contract are made only for administrative and identification purposes. Except as expressly provided by the timber sale contract, the purchaser shall be responsible for paying the entire purchase price, even if the actual acreage or timber volume varies from the estimated quantity or volume shown.

All prospective bidders have the opportunity and are expected to inspect the sale area and the forest products located thereon. Bidders shall not rely on any representations by the State including, but not limited to, acreage estimates, volume estimates, appraisal or pre-bid documentation. The successful bidder/purchaser will further warrant that they have entered the timber sale contract without any reliance upon the DNR's volume estimates, acreage estimates, appraisals, pre-bid documentation, or any other representation by the DNR.

Any timber sale contract arising out of these public auctions will require the successful purchaser to warrant that they are entering the timber sale contract based solely upon their own judgment of the value of the forest products, formed after their own examination and inspection of both the timber sale area and the forest products being sold.

Exclusion and Disclaimer of Warranties

The PARTIES AGREE that the IMPLIED WARRANTIES OF MERCHANTABILITY AND FITNESS FOR A PARTICULAR PURPOSE, and ALL OTHER WARRANTIES EXPRESS OR IMPLIED, ARE EXCLUDED from this transaction, and shall not apply to the goods sold. For example, THE FOLLOWING SPECIFIC MATTERS ARE NOT WARRANTED, and are EXCLUDED from this transaction:

- A. ***The merchantability of the forest products.*** The use of the term "merchantable" in any document is not intended to vary the foregoing.
- B. ***The condition of the forest products.*** All forest products will be conveyed "AS IS."
- C. ***The acreage contained within any sale area.*** Any acreage descriptions appearing in the timber notices of sale, timber sale contract, timber sale map or other documents are estimates only, provided solely for administrative and identification purposes.
- D. ***The volume, quality, or grade of the forest products.*** The descriptions of the forest products to be conveyed are estimates only, made solely for administrative and identification purposes.
- E. ***The correctness of any soil or surface conditions, presale construction appraisals, investigations, and all other pre-bid documents prepared by or for the State.*** These documents have been prepared for the State's appraisal purposes only.
- F. ***That the sale area is free from threatened or endangered species, or their habitat.*** The State is not responsible for any interferences with forestry operations that result from the presence of any threatened or endangered species, or the presence of their habitat, within the sale area.
- G. That the forestry operations to be performed under this contract will be free from regulatory actions by governmental agencies. The State is not responsible for actions to enforce regulatory laws, such as the Washington Forest Practices Act (Chapter 76.09 RCW), taken by the Department of Natural Resources or any other agency that may affect the operability of these timber sales.
- H. Items contained in any other documents prepared for or by the State.

Please also see timber sale contract clause G-060 for further information.

BIDDING PROCEDURES FOR TIMBER AUCTIONS

The general requirements that follow are a part of all Timber Notices of Sale to be auctioned by the Department of Natural Resources (DNR).

General Information

The State reserves the right to waive minor irregularities and the right to reject any or all bids.

- A. This book contains the timber notices of sale and maps for each timber sale scheduled to be auctioned. More specific information can be obtained by contacting the appropriate region office at the number listed on the back cover of this book. Sales may be added to each monthly auction by the Department which are not included in this publication. This publication is not updated following original production.
- B. The timber notice of sale is a summary of sale information. For more specific information, interested parties are encouraged to view the Auction Packets on www.dnr.wa.gov. Auction Packets contain **DRAFT** copies of the timber notice of sale, map, contract, road plan, cruise data, precruise and cruise narrative, and other associated documents.
- C. Timber sale auction packets may also be obtained at no charge for individual sales by visiting the appropriate region office.
- D. Timber sale contracts contain extensive terms and conditions that will be binding upon successful high bidders. Each bidder should carefully review all terms contained in the appropriate **DRAFT** timber sale contract prior to bidding on a sale, and should review the final contract prior to signing. **DRAFT** timber sale contracts are contained in the auction packets and are available upon request at the respective region office.
- E. Sales advertised in this book are subject to the Board of Natural Resources approval before they will be sold. The Board meets and approves sales approximately six weeks prior to auction.
- F. The State does not guarantee the accuracy of any information contained herein pertaining to particular sales. Therefore, all prospective purchasers are expected to make their own independent inspections and appraisals prior to bidding.
- G. If any conflict exists between the information in the Timber Notice of Sale, timber sale map, sale auction packets and that in the timber sale contract, the signed contract will prevail.
- H. Purchasers must pay the Forest Excise Tax on the bid price, permanent road construction costs, and other considerations. The tax rate is 5% without the EARR credit and 4.2% with the credit. For more information contact the Department of Revenue, Forest Tax Section at 1-800-548-8829.
- I. **All sales are subject to confirmation by the DNR under RCW 79.15.120.**
- J. **Within 30 days of sale confirmation, the apparent high bidder will provide to the State the Performance Security specified on each Notice of Sale. The successful bidder also agrees to return a signed contract to the State within 30 days of confirmation.** Failure to provide a signed contract to the state within 30 days of confirmation may result in a loss of bidder's rights to the products sold and forfeiture of initial deposit moneys.
- K. Each DNR region office has information about sales offered in that region. For further information, contact the respective DNR region office. Region office addresses and telephone numbers appear on the back cover of this booklet.
- L. The purchaser assumes the responsibility for any costs associated with extra maintenance or repair levied by a county for any county road used by the purchaser.

Auction Time and Location

Auctions will start at 10:00 a.m. and close at 4:00 p.m. on the date and at the location specified in each Timber Notice of Sale.

Bidding Process

- A. All timber will be auctioned using the sealed bid method.
- B. Bids submitted on day of auction must be in the bid box at the specified auction location before 10:00 a.m. The respective DNR region office must receive mailed bids by 4:30 p.m., on the last business day before the auction. Bidders assume all risk for the method of delivery.
- C. The DNR has the right to reject bid forms that are completed incorrectly. *All bid forms must have an original signature on behalf of the person or entity submitting the bid, and must be on the form provided in this booklet or a photocopy thereof. Revised documents are not permissible.* Bidding instructions are on the back of the Sealed Bid Form. A bid deposit must be included in the sealed bid envelope unless using a Timber Sale Statewide Bid Bond.
- D. All bids must include the completed Sealed Bid Form and bid deposit.
- E. Bids will be opened in each respective region in the order in which sales appear in the Public Auction Sale of Timber book (alphabetically by county and by agreement number). Sales added after the book is printed will be inserted to retain this order. Sort sales may be auctioned out of this sequence at the State's convenience.
- F. If a tie bid occurs, the names of the tie bidders will be placed in a hat and the successful bidder will be determined by a drawing.
- G. Opportunities to Withdraw Bids:
For all sales offered on a stumpage basis only, the apparent high bidder on a particular sale will have the option of withdrawing additional sealed bids submitted for any remaining sales to be auctioned. The apparent high bidder must exercise this option within two minutes after the apparent high bidder is announced. This option is not available for sales offered on a delivered basis.

Eligibility to Bid

The following criteria must be met in order to bid on State timber sales:

- 18 years of age (or have a co-signer who meets the eligibility requirements)
- Licensed to do business in the State of Washington
- Eligible to bid on Export Restricted timber
- Authorized to submit bids

Authorized Representatives

Company officers or company authorized representatives may bid on State sales, sign State documents, or sign checks. A list of authorized representatives and their specific authorities must be submitted, in writing, to the Department of Natural Resources, Product Sales and Leasing Division, P.O. Box 47014, Olympia, Washington, 98504-7014, ten days in advance of the auction. *A company owner or officer must sign this submittal.*

Bid Deposits

- A. Required bid deposits are listed on each Timber Notice of Sale.
- B. Bid deposits must be in the form of cash, certified check, cashiers' check, money order or bid bond.
- C. Bid bonds may be either a Timber Sale Per Sale Bid Bond or a Timber Sale Statewide Bid Bond.
- D. All bid deposits shall be submitted by the person or entity submitting the bid and made payable to the Department of Natural Resources. **Third party deposits will not be accepted.**

Timber Sale Per Sale Bid Bonds

- A. The Per Sale Bid Bond shall guarantee payment of the bid deposit **within ten days of auction.**
- B. The balance between the bid bond and the Initial Deposit payment is due **by 4:30 p.m., on the day of auction.**
- C. Additional forms and instructions for a Per Sale Bid Bond are available at any DNR region office.

Timber Sale Statewide Bid Bond

- A. Statewide Bid Bonds shall guarantee payment of the Initial Deposit on any statewide timber sale while the bond is in effect.
- B. The Statewide Bid Bond must be received by the Department of Natural Resources, Product Sales and Leasing Division, P.O. Box 47014, Olympia, Washington, 98504-7014, ten days in advance of the auction date. The bond shall be in the amount of \$150,000.00.
- C. Successful bidders using a Statewide Bid Bond must pay the total Initial Deposit payment (10% of the total bid price) **by 4:30 p.m., on the day of the auction.**
- D. A Statewide Bid Bond cannot be used to secure the Initial Deposit payment due the day of auction.
- E. Additional forms and instructions for a statewide bid bond are available at any DNR region office.

Payments

The initial deposit for a sale is 10% of the total bid value as submitted by the apparent high bidder (25% if the bidder is a defaulter as defined under WAC 332-140-300) and never less than \$5,000.00 for lump sum sales. For Lump Sum sales appraised at less than \$5,000.00, the entire bid value is due on day of auction.

- A. Apparent high bidders using cash, certified check, cashiers' check or money order as a bid deposit must pay the total Initial Deposit amount by 4:30 p.m. on auction day.
- B. Apparent high bidders using a Timber Sale Per Sale Bid Bond as a bid deposit must pay the difference between the bid deposit and the total initial deposit by 4:30 p.m., on the day of auction. The bid bond amount must be replaced with a certified check, cashiers' check, bank draft, cash, money order, or wire transfer within ten days of the auction.
- C. Apparent high bidders using a Timber Sale Statewide Bid Bond must pay the entire Initial Deposit amount by 4:30 p.m. on the day of auction.
- D. All payments must be in the form of a certified check, cashiers' check, bank draft, cash, money order or wire transfer.



Summary Report of All Sales for the Month of April 2022

Board Sales

<u>County</u>	<u>Region</u>	<u>Agree #</u>	<u>FSC® Sale Name</u>	<u>Volume</u>	<u>Value</u>
Grays Harbor	Pacific Cascade	101392	BBQ HEAT LOW	5,400	\$1,739,000.00
Stevens	Northeast	102406	Q CASSNER CREEK	4,832	\$1,123,000.00
Stevens	Northeast	102451	Q SOUTH JUMBO SORTS	3,350	\$1,792,434.00
Total				13,582	\$4,654,434.00

Region Sales

<u>County</u>	<u>Region</u>	<u>Agree #</u>	<u>FSC Sale Name</u>	<u>Volume</u>	<u>Value</u>
Clallam	Olympic	102915	STRIPED FLY	469	\$114,000.00
Total				469	\$114,000.00



*Scan with your smartphone or tablet to go
to the April 2022 timber auction page*



TIMBER NOTICE OF SALE

SALE NAME: *BBQ HEAT LOW*

AGREEMENT NO: *30-101392*

AUCTION: April 28, 2022 starting at 10:00 a.m., **COUNTY:** Grays Harbor
Pacific Cascade Region Office, Castle Rock, WA

SALE LOCATION: Sale located approximately 12 miles southwest of Oakville

**PRODUCTS SOLD
AND SALE AREA:**

All timber, except for leave trees bounded by yellow "Leave Tree Area" tags, individual leave trees marked with blue paint and all downed timber existing 5 years prior to the day of sale bound by the following:

Unit 1 - 2: White "Timber Sale Boundary" tags and pink "Timber Harvest Boundary" flagging.

Units 3 - 6 ROW: Orange "Right of Way Boundary" tags and orange flagging.

All forest products above located on part(s) of Sections 1, 11 and 12 all in Township 15 North, Range 6 West, W.M., containing 138 acres, more or less.

CERTIFICATION: This sale is certified under the Sustainable Forestry Initiative® program Standard (cert no: PwC-SFIFM-513)

ESTIMATED SALE VOLUMES AND QUALITY:

Species	Avg DBH	Ring Count	Total MBF	MBF by Grade								
				1P	2P	3P	SM	1S	2S	3S	4S	UT
Hemlock	19		2,926						1,905	803	199	19
Douglas fir	21	6	2,037				34		1,405	505	73	20
Red alder	14		386						77	104	190	15
Spruce	24		43						28	13	1	1
Red cedar	25		8							8		
Sale Total			5,400									

MINIMUM BID: \$1,739,000.00 **BID METHOD:** Sealed Bids

PERFORMANCE SECURITY: \$100,000.00 **SALE TYPE:** Lump Sum

EXPIRATION DATE: October 31, 2023 **ALLOCATION:** Export Restricted

BID DEPOSIT: \$173,900.00 or Bid Bond. Said deposit shall constitute an opening bid at the appraised price.

HARVEST METHOD: Cable, Cable-Assist, and Shovel. This sale is estimated to be 70% ground based harvest systems and 30% cable/cable assist harvest systems. Ground based yarding equipment will not be permitted on sustained slopes over 45%. Self-leveling ground based yarding equipment will not be permitted sustained slopes over 60%. Cable assist equipment will not be permitted on sustained slopes over 75%. For additional harvesting restrictions see Clause H-140 in the contract.



TIMBER NOTICE OF SALE

ROADS: 31.20 stations of required construction. 63.76 stations of required reconstruction. 50.04 stations of optional construction. 6.40 stations of optional reconstruction. Rock used in accordance with the quantities on the ROCK LIST may be obtained from the X-Line Pit (Sec 10 T15N R6W). X-Line Pit Development is required as described in the road plan and X-Line Pit Development Plan. Rock used in accordance with the quantities on the ROCK LIST may be obtained from any commercial source at the Purchaser's expense. Rock sources are subject to written approval by the Contract Administrator before their use. Purchaser will provide 24 hours of Rock Exploration. See Road Plan 6-10 and 11-1 for additional information. Gates will be supplied and installed by purchaser on the following roads; BR-2000 at station 1+70, BR-3000 at station 1+00. See Road Plan 7-76 for additional information. Road construction will not be permitted from October 1 to April 30 unless authorized in writing by the Contract Administrator. Road work will not be permitted from October 1 to April 30 unless authorized in writing by the Contract Administrator. The hauling of forest products will not be permitted from November 1 to April 30 unless authorized in writing by the Contract Administrator. The hauling of forest products will not be permitted on the BR-2000 road November 1 to April 30 unless authorized in writing by the Contract Administrator.

ACREAGE DETERMINATION

CRUISE METHOD: The sale acres were determined by GPS. The sale area was cruised using a variable plot cruise method.

FEES: \$91,800.00 is due on day of sale. \$9.00 per MBF is due upon removal. These are in addition to the bid price.

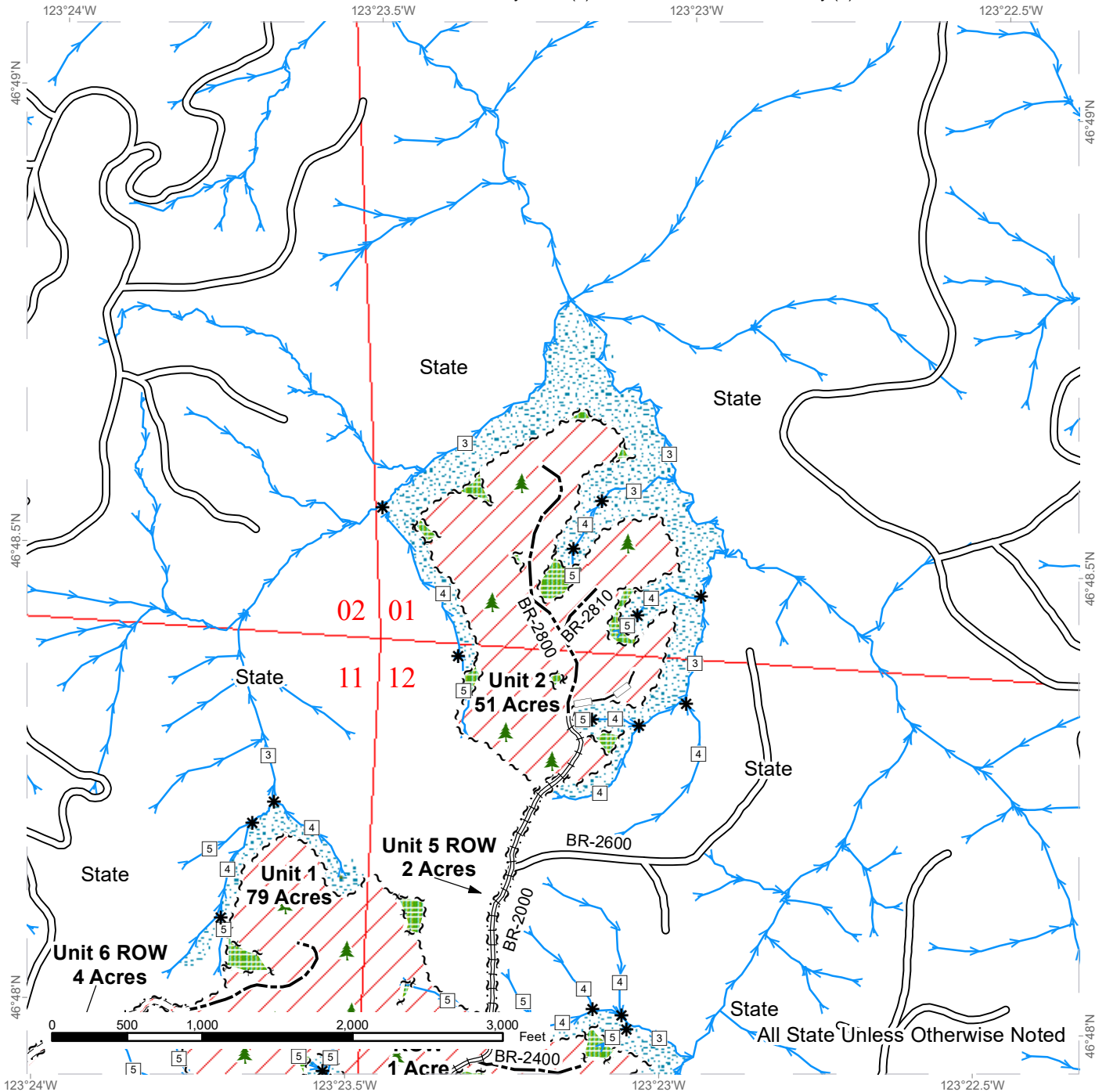
SPECIAL REMARKS: This sale has approximately 34 MBF of special mill DF, 468 MBF high quality DF 2 saw, 11 MBF high quality DF 3 saw, see cruise for details.

PCP 1-1 gate keys may be obtained from the Pacific Cascade Region office

TIMBER SALE MAP

SALE NAME: BBQ HEAT LOW
AGREEMENT #: 30-101392
TOWNSHIP(S): T15R6W
TRUST(S): Charitable/Educational/Penal & Reformatory Instit. (6), Common School and Indemnity (3)

REGION: Pacific Cascade Region
COUNTY(S): Grays Harbor
ELEVATION RGE: 520-1080



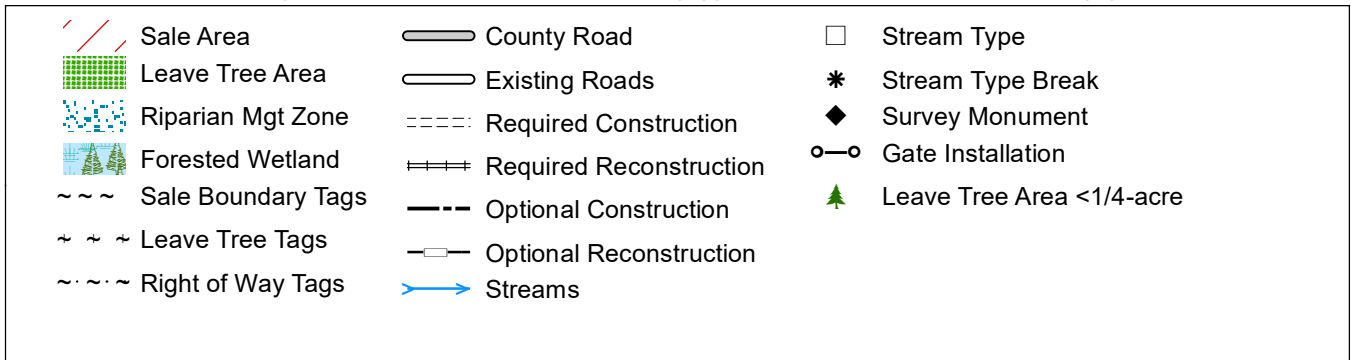
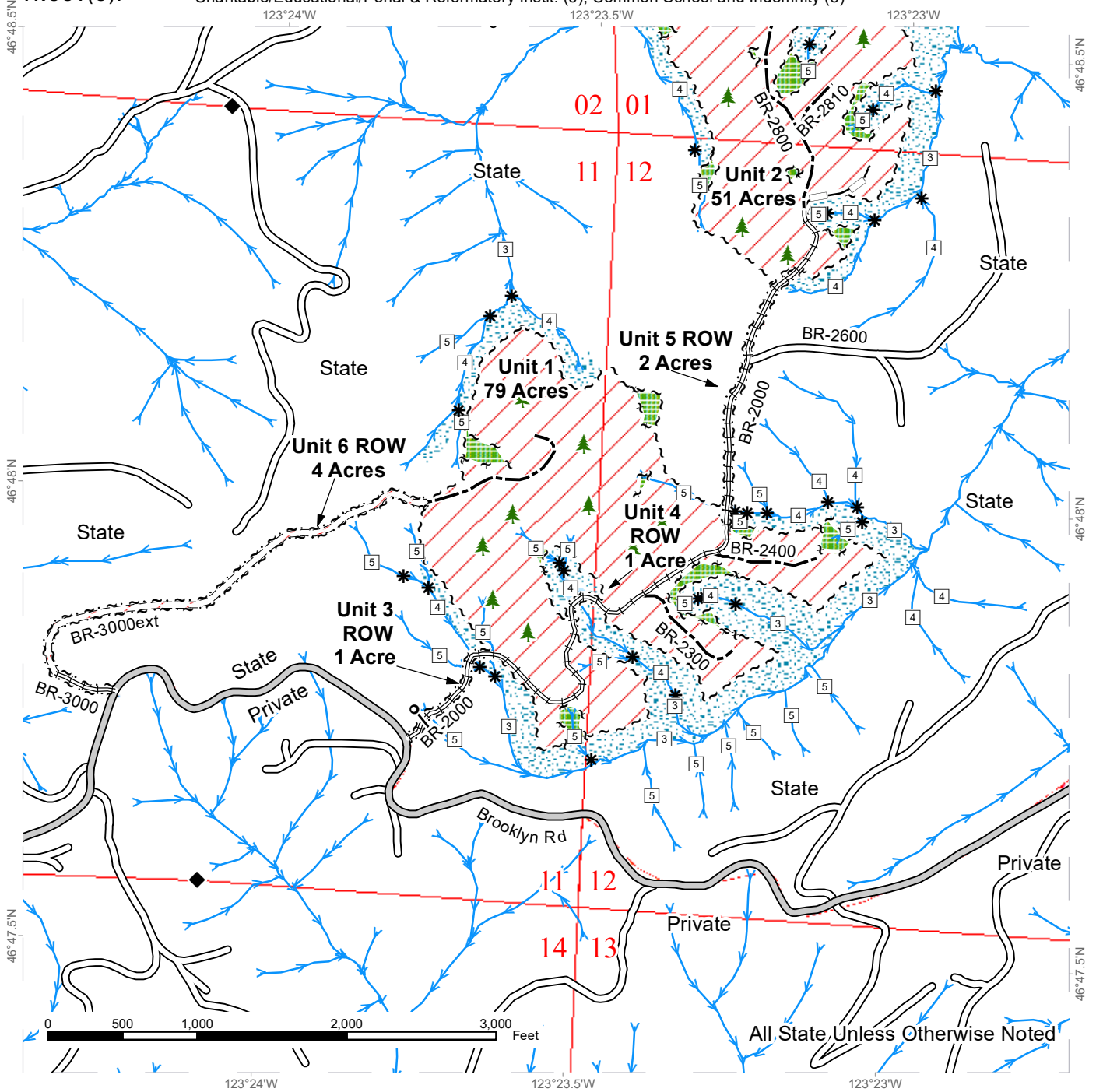
Sale Area	Existing Roads	Stream Type
Leave Tree Area	Required Construction	Stream Type Break
Riparian Mgt Zone	Required Reconstruction	Leave Tree Area <1/4-acre
Forested Wetland	Optional Construction	
Sale Boundary Tags	Optional Reconstruction	
Leave Tree Tags	Streams	
Right of Way Tags		



TIMBER SALE MAP

SALE NAME: BBQ HEAT LOW
AGREEMENT #: 30-101392
TOWNSHIP(S): T15R6W
TRUST(S): Charitable/Educational/Penal & Reformatory Instit. (6), Common School and Indemnity (3)

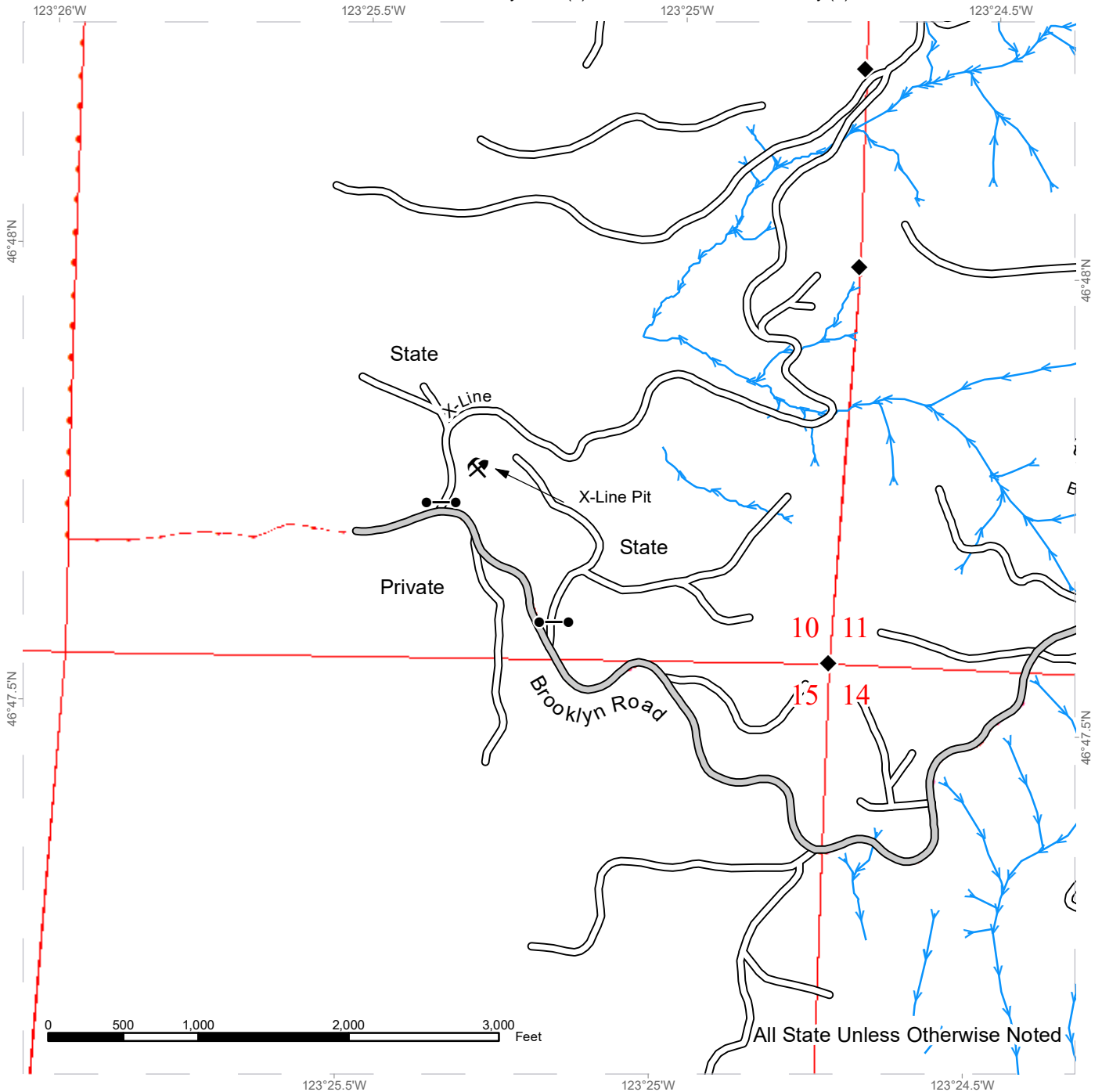
REGION: Pacific Cascade Region
COUNTY(S): Grays Harbor
ELEVATION RGE: 520-1080



TIMBER SALE MAP

SALE NAME: BBQ HEAT LOW
AGREEMENT #: 30-101392
TOWNSHIP(S): T15R6W
TRUST(S): Charitable/Educational/Penal & Reformatory Instit. (6), Common School and Indemnity (3)

REGION: Pacific Cascade Region
COUNTY(S): Grays Harbor
ELEVATION RGE: 520-1080



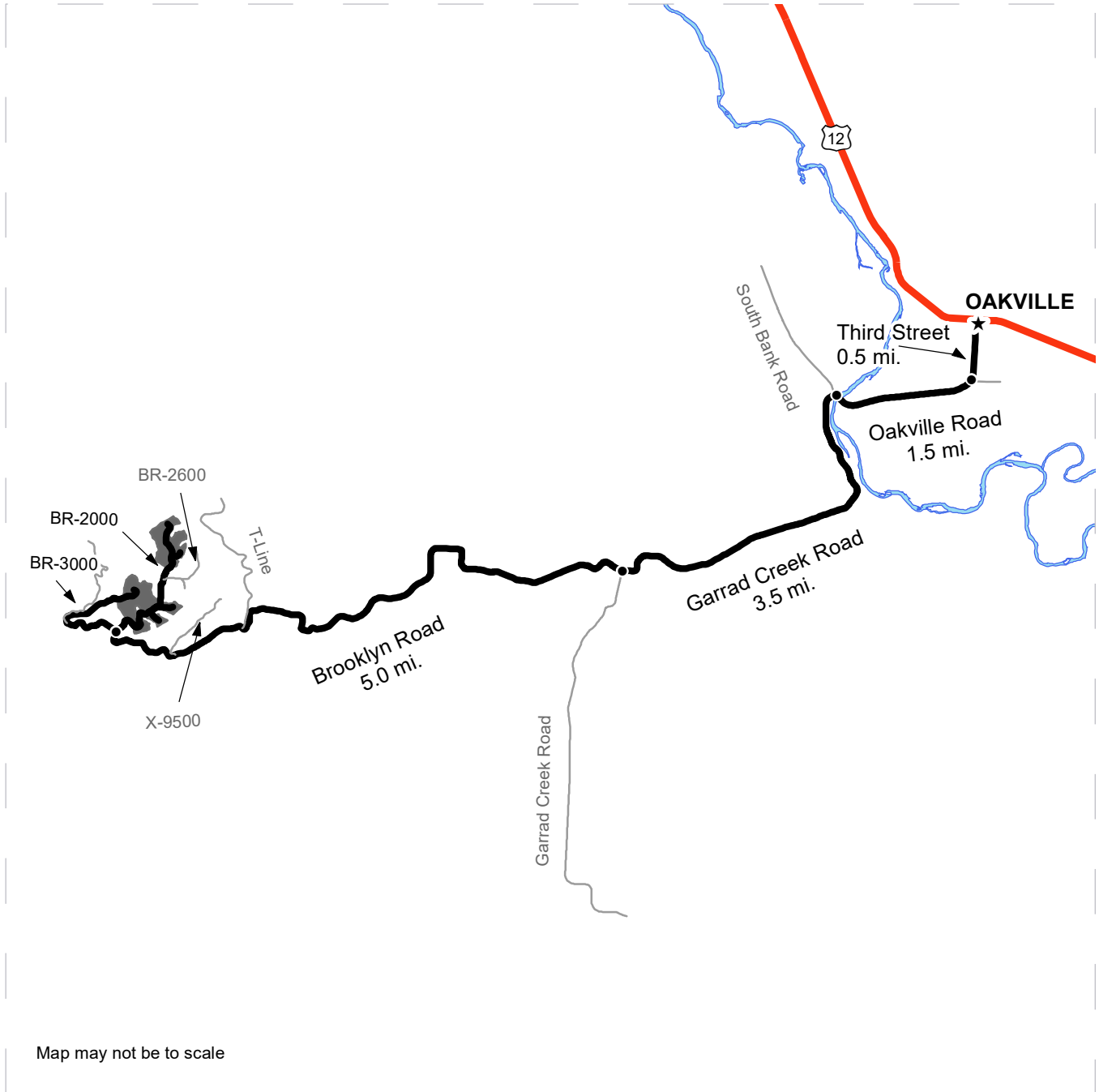
	County Road
	Existing Roads
	Streams
	Survey Monument
	Gate (<<Lock Type>>)
	Rock Pit



DRIVING MAP

SALE NAME: BBQ HEAT LOW
AGREEMENT#: 30-101392
TOWNSHIP(S): T15R6W
TRUST(S): Charitable/Educational/Penal & Reformatory Instit. (6), Common School and Indemnity (3)

REGION: Pacific Cascade Region
COUNTY(S): Grays Harbor
ELEVATION RGE: 520-1080



Map may not be to scale

<ul style="list-style-type: none"> Timber Sale Unit Haul Route View Only Route Highway Open Water Town 	<p><u>DRIVING DIRECTIONS:</u></p> <p>BBQ Heat Low is located off of the Brooklyn Rd in Grays Harbor County. From Highway 12 at the town of Oakville turn south on Third St continue on third St for 0.5 miles and then veer right onto Oakville Road. Continue west on Oakville Rd for 1.5 mile, then turn south onto Garrard Creek Rd. Continue for 3.5 miles to the Brooklyn Rd. Take a Right on the Brooklyn Rd and follow for 5 miles to the BR-2000 and the Proposal.</p>
--	---



TIMBER NOTICE OF SALE

SALE NAME: Q CASSNER CREEK

AGREEMENT NO: 30-102406

AUCTION: April 26, 2022 starting at 10:00 a.m., Northeast Region Office, Colville, WA

COUNTY: Stevens

SALE LOCATION: Sale located approximately 9 miles west of Addy, WA.

PRODUCTS SOLD AND SALE AREA:

All conifer species except for leave trees banded with blue paint, two standing snags and two down logs per acre in Units 1, 2, 3, 4, 5, 6 and 7 bounded by white timber sale boundary tags; and all right of way timber bounded by orange right of way tags.

All forest products above located on part(s) of Sections 19 and 30 all in Township 33 North, Range 39 East, Sections 24, 25 and 36 all in Township 33 North, Range 38 East, W.M., containing 448 acres, more or less.

CERTIFICATION: This sale is certified under the Sustainable Forestry Initiative® program Standard (cert no: PwC-SFIFM-513)

ESTIMATED SALE VOLUMES AND QUALITY:

Table with columns: Species, Avg DBH, Ring Count, Total MBF, and MBF by Grade (P, SM, 1S, 2S, 3S, 4S, 5S, 6S, UT). Rows include Douglas fir, Ponderosa pine, Grand fir, Larch, and Sale Total.

MINIMUM BID: \$1,123,000.00

BID METHOD: Sealed Bids

PERFORMANCE SECURITY:

\$100,000.00

SALE TYPE: Lump Sum

EXPIRATION DATE: July 30, 2024

ALLOCATION: Export Restricted

BID DEPOSIT: \$112,300.00 or Bid Bond. Said deposit shall constitute an opening bid at the appraised price.

HARVEST METHOD: Rubber tired skidder, Track skidder, and Ground based equipment. Falling and Yarding will not be permitted from March 1 to June 1 unless authorized in writing by the Contract Administrator in Units 1 and 2 due to spring breakup and February 1 to August 1 unless authorized in writing by the Contract Administrator in Units 3, 4, 5, 6 and 7 due to spring breakup and beetle timing restrictions.

ROADS: 92.11 stations of required reconstruction. 10.20 stations of optional construction. 8.15 stations of optional reconstruction. 535.27 stations of required prehaul maintenance. 5.44 stations of optional prehaul maintenance. Road construction will not be permitted from March 1 to June 1 unless authorized in writing by the Contract Administrator due to spring breakup. The hauling of forest products will not be permitted from March 1 to June 1 unless authorized in writing by the Contract Administrator due to spring breakup.



TIMBER NOTICE OF SALE

ACREAGE DETERMINATION

CRUISE METHOD: Acreage determined using GPS methods. Acreage shown above is net harvest acres in harvest units. Ponderosa pine: 8.0 - 17.5 inches dbh has a minimum top of 5.6 inch dib. All other species: 7.0 - 17.5 inches dbh has minimum top of 4.6 inch dib. All species 17.6 inches and greater dbh have a minimum top dib of 40% of dob at 16 feet or a 6 inch top whichever is greater.

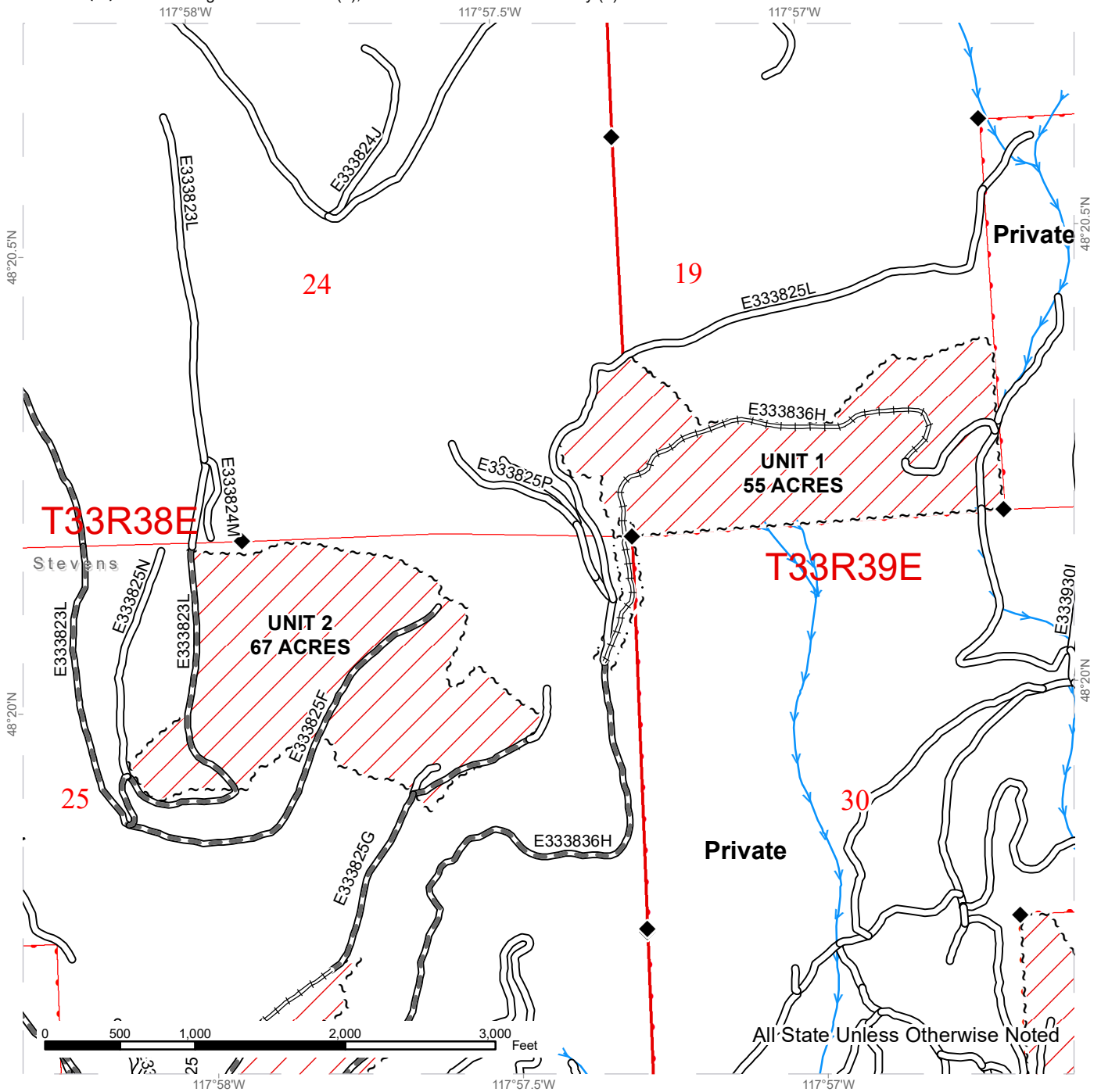
FEES: \$82,144.00 is due on day of sale. \$9.00 per MBF is due upon removal. These are in addition to the bid price.

SPECIAL REMARKS: None.

TIMBER SALE MAP

SALE NAME: Q CASSNER CREEK
AGREEMENT #: 30-102406
TOWNSHIP(S): T33R38E, T33R39E
TRUST(S): Agricultural School (4), Common School and Indemnity (3)

REGION: Northeast Region
COUNTY(S): Stevens
ELEVATION RGE: 2880-4960

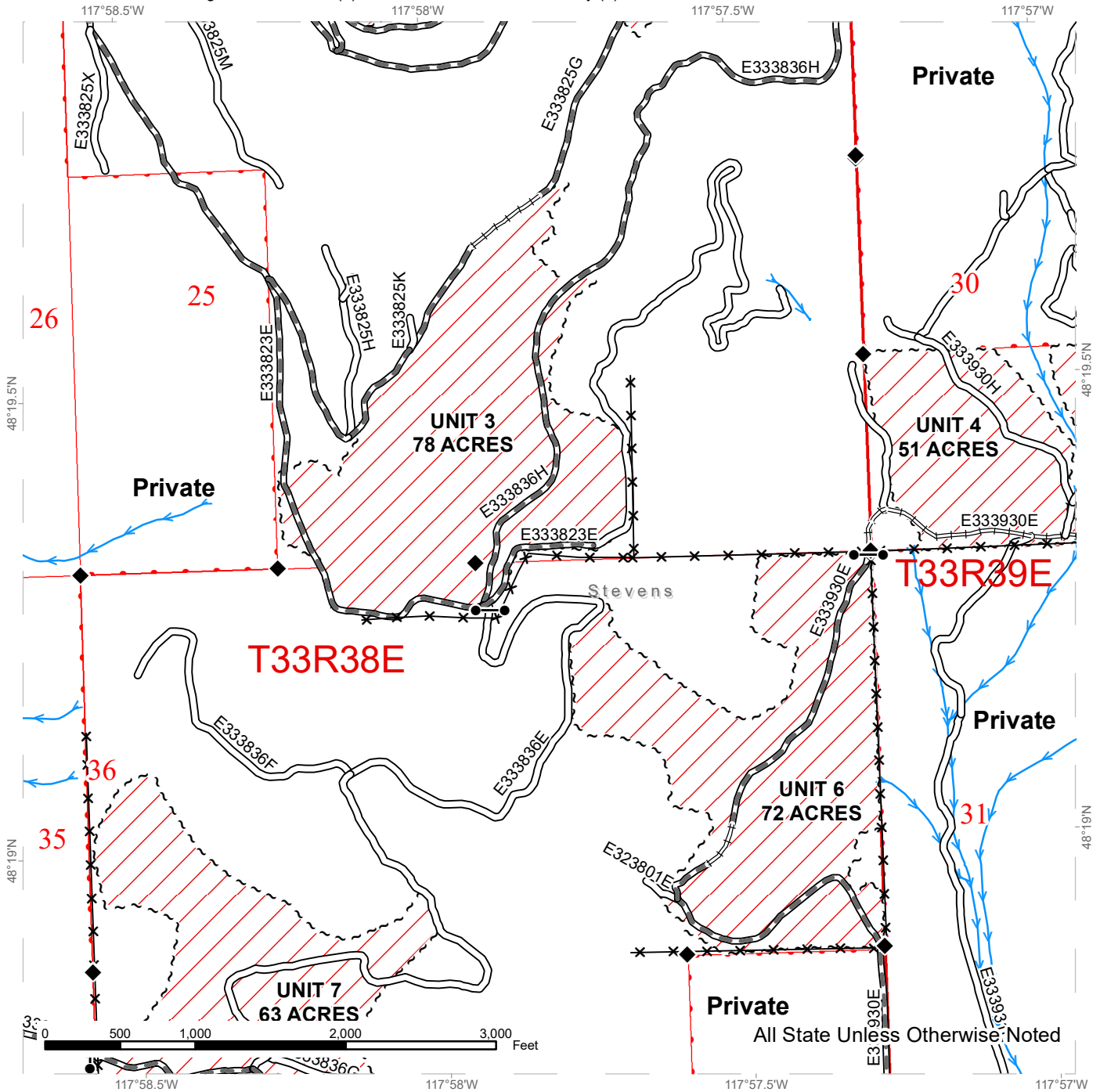


Public Land Survey Sections	Existing Roads	Streams
DNR Managed Lands	Required Pre-Haul Maintenance	Survey Monument
Variable Retention Harvest	Required Reconstruction	
Sale Boundary Tags		
Right of Way Tags = 1 Acre		

TIMBER SALE MAP

SALE NAME: Q CASSNER CREEK
AGREEMENT #: 30-102406
TOWNSHIP(S): T33R38E, T33R39E
TRUST(S): Agricultural School (4), Common School and Indemnity (3)

REGION: Northeast Region
COUNTY(S): Stevens
ELEVATION RGE: 2880-4960



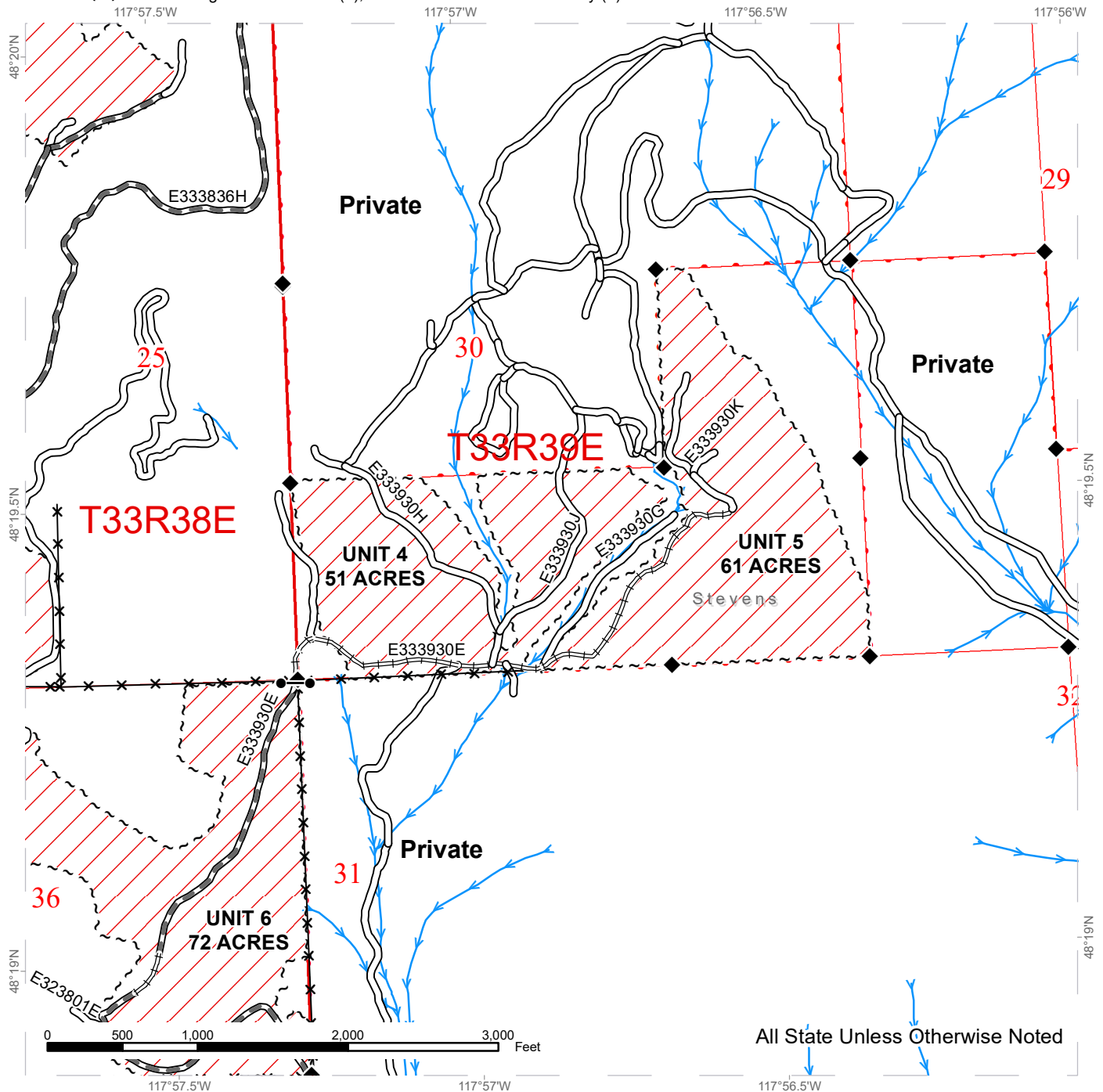
Public Land Survey Sections	Existing Roads	Streams
DNR Managed Lands	Required Pre-Haul Maintenance	Survey Monument
Variable Retention Harvest	Required Reconstruction	Gate
Sale Boundary Tags		Fence



TIMBER SALE MAP

SALE NAME: Q CASSNER CREEK
AGREEMENT #: 30-102406
TOWNSHIP(S): T33R38E, T33R39E
TRUST(S): Agricultural School (4), Common School and Indemnity (3)

REGION: Northeast Region
COUNTY(S): Stevens
ELEVATION RGE: 2880-4960

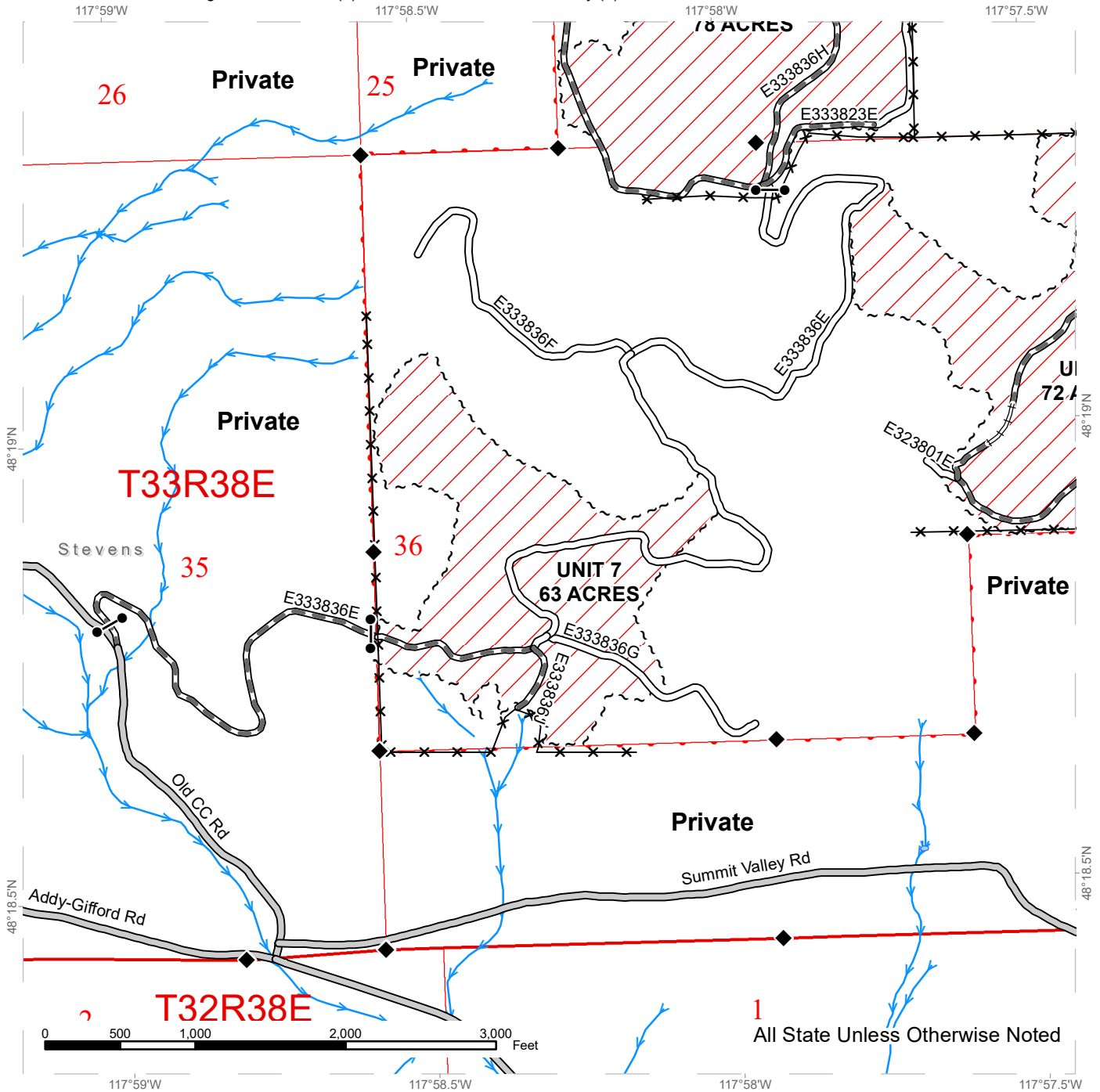


	Public Land Survey Sections		Existing Roads		Streams
	DNR Managed Lands		Required Pre-Haul Maintenance		Survey Monument
	Variable Retention Harvest		Required Reconstruction		Gate
	Sale Boundary Tags		Fence		Fence

TIMBER SALE MAP

SALE NAME: Q CASSNER CREEK
AGREEMENT #: 30-102406
TOWNSHIP(S): T33R38E, T33R39E
TRUST(S): Agricultural School (4), Common School and Indemnity (3)

REGION: Northeast Region
COUNTY(S): Stevens
ELEVATION RGE: 2880-4960



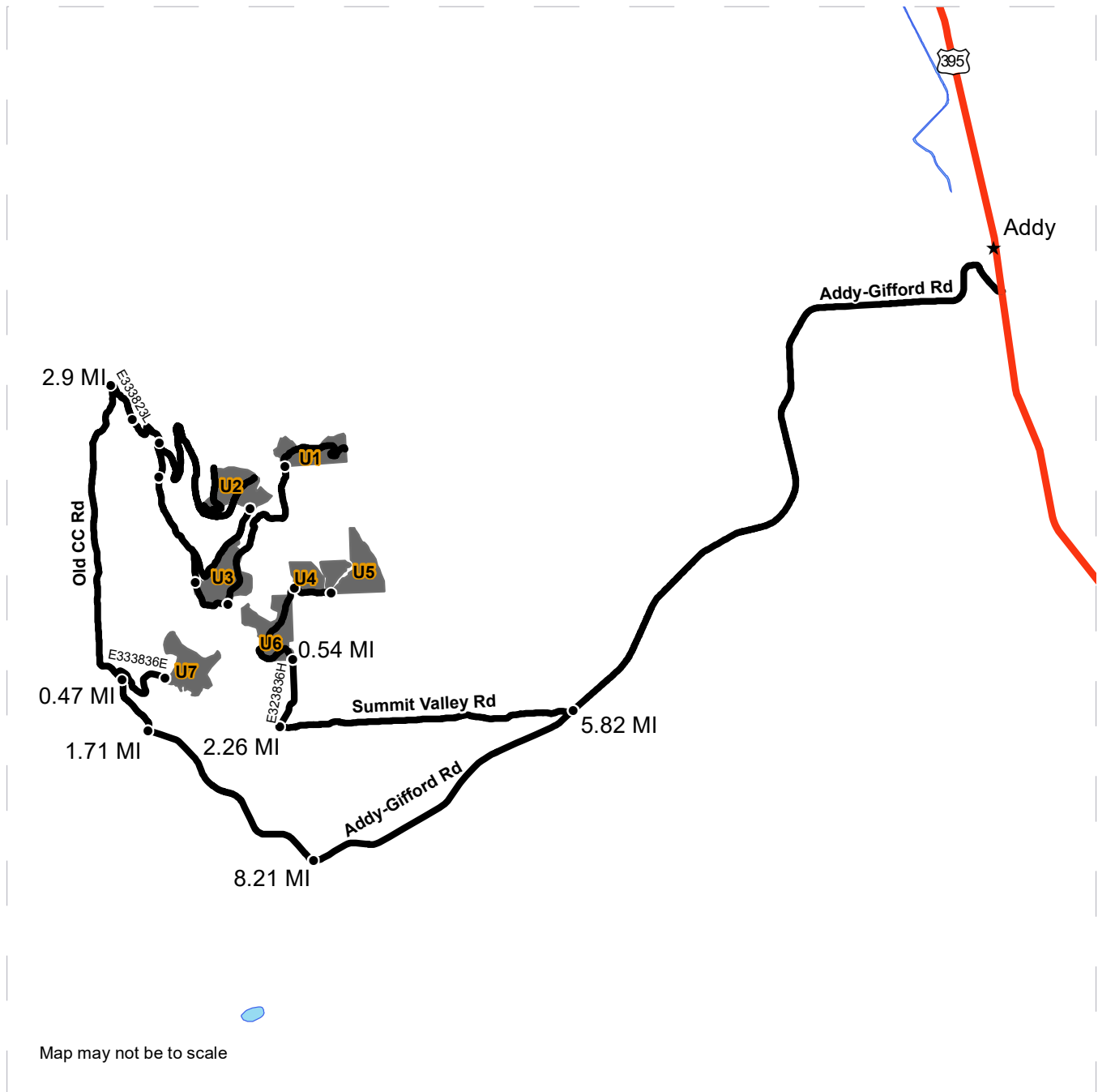
All State Unless Otherwise Noted

Public Land Survey Sections	County Road	Streams
DNR Managed Lands	Existing Roads	Survey Monument
Variable Retention Harvest	Required Pre-Haul Maintenance	Gate
Sale Boundary Tags	Required Reconstruction	Fence

DRIVING MAP

SALE NAME: Q CASSNER CREEK
AGREEMENT#: 30-102406
TOWNSHIP(S): T33R38E, T33R39E
TRUST(S): Agricultural School (4), Common School and Indemnity (3)

REGION: Northeast Region
COUNTY(S): Stevens
ELEVATION RGE: 2880-4960

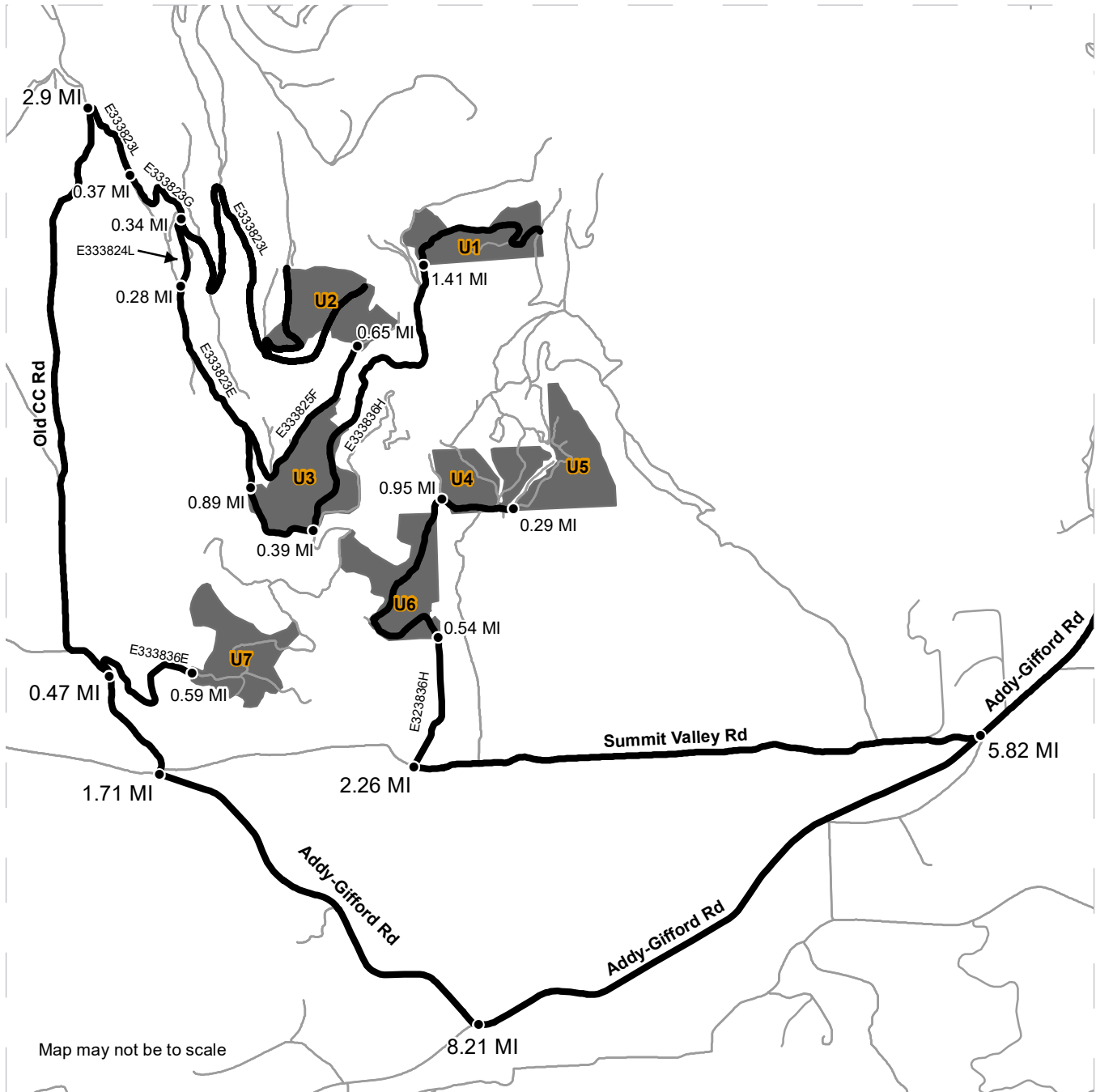


<ul style="list-style-type: none"> Timber Sale Unit Haul Route Highway Distance Indicator Town 	<p><u>DRIVING DIRECTIONS:</u> From the junction of Highway 395 and Addy-Gifford Road located in Addy, WA, proceed west on Addy-Gifford Road for 5.82 miles and turn right onto Summit Valley Road; proceed for 2.26 miles and turn right onto the E323836H road, travel for 0.54 miles to reach Unit 6. From Unit 6 proceed on the E323836H road for 0.95 miles to reach Unit 4 and another 0.29 miles to reach Unit 5. From the junction of Highway 395 and Addy-Gifford road in Addy, travel west on Addy-Gifford Road for 8.21 miles and then merge right to continue on Addy-Gifford Road and proceed for another 1.71 miles to Old CC Road, travel for 0.47 miles on Old CC Road and turn right onto the E333836E road, proceed for 0.59 miles to reach Unit 7. From the junction of Addy-Gifford and Old CC Roads in Summit Valley, travel for 2.9 miles on Old CC Road and turn right onto the E333823L road, proceed for 0.37 miles and then turn left onto the E333823G road, travel for 0.34 miles and then merge right onto the 333824K road, proceed for 0.28 miles and merge onto the E333823E road continue for 0.89 miles to reach Unit 3. From Unit 3 travel for 0.39 miles and then turn right onto the E333836H road, proceed for 1.41 miles to reach Unit 1. From the E333825F road located in Unit 3, travel north for 0.65 miles to reach Unit 2.</p>
---	--

DRIVING MAP

SALE NAME: Q CASSNER CREEK
AGREEMENT#: 30-102406
TOWNSHIP(S): T33R38E, T33R39E
TRUST(S): Agricultural School (4), Common School and Indemnity (3)

REGION: Northeast Region
COUNTY(S): Stevens
ELEVATION RGE: 2880-4960



Map may not be to scale

- Timber Sale Unit
- Haul Route
- Other Route
- Distance Indicator

DRIVING DIRECTIONS:
 From the junction of Highway 395 and Addy-Gifford Road located in Addy, WA, proceed west on Addy-Gifford Road for 5.82 miles and turn right onto Summit Valley Road; proceed for 2.26 miles and turn right onto the E323836H road, travel for 0.54 miles to reach Unit 6. From Unit 6 proceed on the E323836H road for 0.95 miles to reach Unit 4 and another 0.29 miles to reach Unit 5. From the junction of Highway 395 and Addy-Gifford road in Addy, travel west on Addy-Gifford Road for 8.21 miles and then merge right to continue on Addy-Gifford Road and proceed for another 1.71 miles to Old CC Road, travel for 0.47 miles on Old CC Road and turn right onto the E333836E road, proceed for 0.59 miles to reach Unit 7. From the junction of Addy-Gifford and Old CC Roads in Summit Valley, travel for 2.9 miles on Old CC Road and turn right onto the E333823L road, proceed for 0.37 miles and then turn left onto the E333823G road, travel for 0.34 miles and then merge right onto the 333824K road, proceed for 0.28 miles and merge onto the E333823E road continue for 0.89 miles to reach Unit 3. From Unit 3 travel for 0.39 miles and then turn right onto the E333836H road, proceed for 1.41 miles to reach Unit 1. From the E333825F road located in Unit 3, travel north for 0.65 miles to reach Unit 2.





TIMBER NOTICE OF SALE

SALE NAME: Q SOUTH JUMBO SORTS

AGREEMENT NO: 30-103021 - 30-103025

AUCTION: April 26, 2022 starting at 10:00 a.m.
Northeast Region Office, Colville, WA

COUNTY: Stevens

SALE LOCATION: Sale located approximately 16 miles north of Kettle Falls, WA.

PRODUCTS SOLD

AND SALE AREA: All timber except for leave trees banded with purple paint bounded by white timber sale boundary tags in Units 1, 2, 3, 4, 5, 6, 7, 8 and 9 meeting the specifications described below; on parts of Section 4 in Township 38 North, Range 37 East, Sections 19, 28, 29, 33, and 34 all in Township 39 North, Range 37 East W.M., containing 539 acres, more or less.

MINIMUM BID AND ESTIMATED LOG VOLUMES:

Agreement #	Sort #	Species and Sort Specifications	Average Log Length	Estimated Volume		Tons Per MBF	Minimum Bid Delivered Prices		Total Appraised Value	Bid Deposit
				Mbf	Tons		\$/mbf	\$/Ton		
103021	01	DF/WL 7-10" dib	N/A	1060	6360	6		\$83.00	\$527,880.00	\$52,788.00
103022	02	DF/WL 11"+ dib	N/A	1264	6320	5		\$100.00	\$632,000.00	\$63,200.00
103023	03	WRC 5"+ dib	N/A	335	1474	4.4		\$280.00	\$412,720.00	\$41,272.00
103024	04	DF/WL 5-6"dib	N/A	616	3942	6.4		\$52.00	\$204,984.00	\$20,498.40
103025	05	All conifer species except WRC 2"+ utility	N/A	75	675	9		\$22.00	\$14,850.00	\$5,000.00

Totals: **3350 18771** **\$1,792,434.00**

CERTIFICATION: This sale is certified under the Sustainable Forestry Initiative® program Standard (cert no: PwC-SFIFM-513)

BID METHOD: Sealed Bids **UNIT OF MEASURE:** Tonnage Scale

EXPIRATION DATE: January 31, 2023 **ALLOCATION:** Export Restricted

PAYMENT SECURITY: To be determined by the State as described in Clause P-045.2 of the Purchaser's Contract.

BIDDING PROCEDURES: A separate sealed bid and envelope must be submitted for each log sort. Prospective Purchasers may bid on any or all log sorts. On the day of sale the Purchaser must bring their bid deposit up to 10% of their total bid price. Complete bidding procedures and auction information may be obtained from the Northeast Region Office in Colville WA. Phone number (509)684-7474.

TIMBER EXCISE



TIMBER NOTICE OF SALE

TAX: Purchaser must pay the forest excise taxes associated with the log sorts delivered to them. The tax rate for this sale is 4.2 %. Taxable Stumpage = Total Delivered Value – (Harvest Cost + Estimated Haul Cost + ARRF). For more information contact the Department of Revenue, Forest Tax Section at 1-800-548-8829.

Use the following rates for estimating taxable stumpage:

Harvest Cost = \$32.00 per Ton for sorts 01, 02, 03 and 04 and \$13.00 per Ton for sort 05.

Hauling Services Payment Rate per Ton
= (Base Rate + Mileage Rate) x (Contractor's hauling bid factor)

Base Rate = \$2.35 per ton

Mileage Rate = $(\$0.16 \times C \text{ miles}) + (\$0.11 \times A \text{ miles}) \times \text{Fuel Index Factor}$

ARRF = \$0.00 per MBF for sort 05 and \$26.00 per MBF for sorts 01, 02, 03 and 04.

Note: To calculate ARRF rates per ton use the tons\mbf conversion factor in the table above.

Long-haul surcharge: An additional haul payment of \$25/mbf net scale for mbf scale sorts or \$4.60/ton for tonnage sorts will be added for delivery destinations in excess of 250 total one-way miles (A miles plus C miles).

CONFIRMATION: Each sort is subject to confirmation following auction. Sorts will not be confirmed until at least 10 days after auction. Final contract award is contingent upon the State's haul cost analysis. Actual haul route may vary and is subject to change at the State's discretion.

SPECIAL REMARKS: The successful Purchaser(s) will be required to purchase logs from the sale area upon delivery to their location specified in the bid submitted. Logs will be delivered to the Purchaser's delivery location by the State's contract harvester. Purchaser is responsible for weighing and scaling costs. All tonnage loads will be weighed and all mbf loads will be scaled at State approved locations. The State reserves the right to determine where logs are authorized to be scaled and weighed.

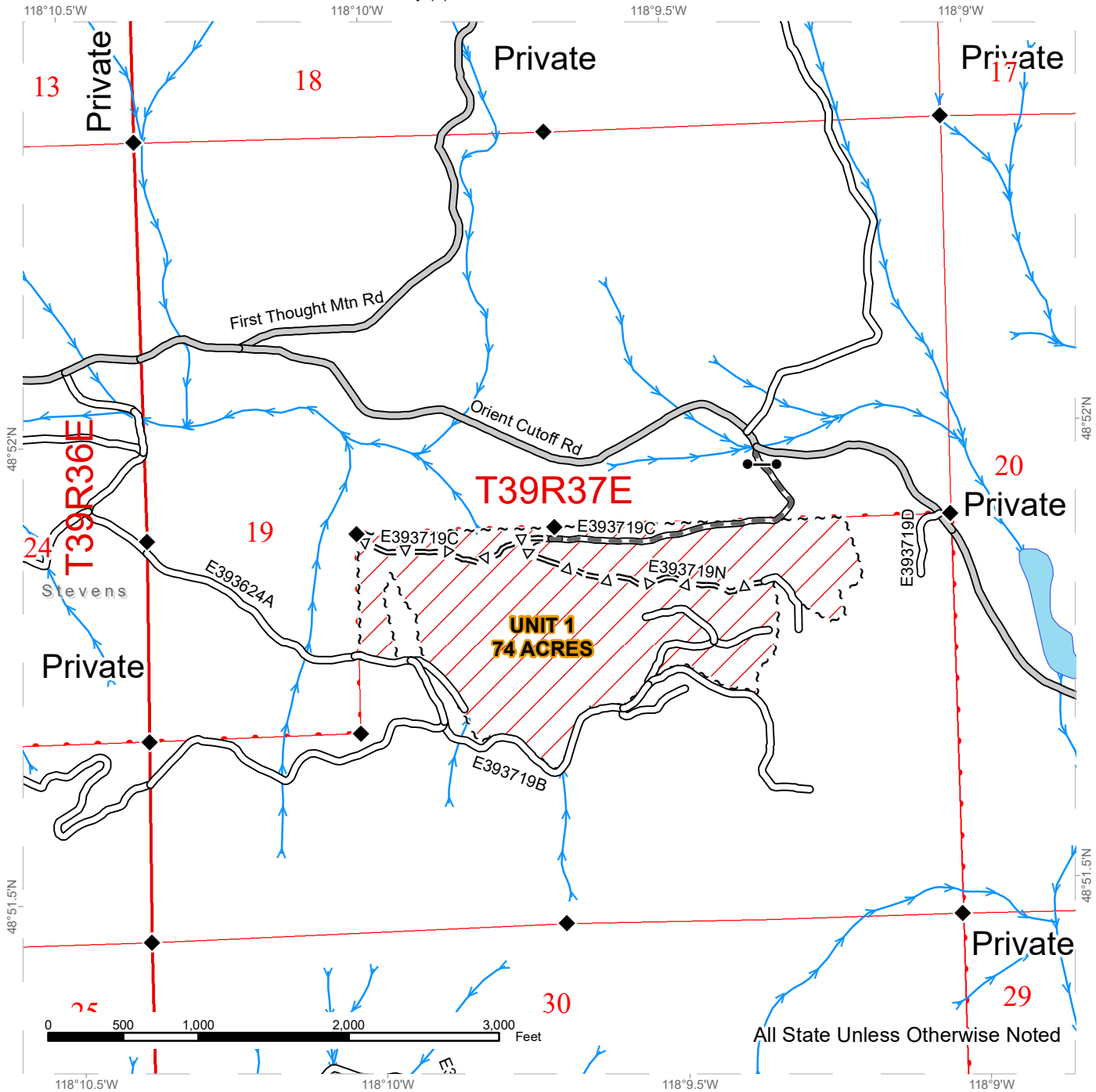
Locked gates restricts access to the sale area. Contact the Northeast Region Office at (509) 684-7474 for access.

For more information regarding this log sort sale visit our web site: <http://www.dnr.wa.gov/programs-and-services/product-sales-and-leasing/timber-sales/timber-auction-packets>. If you have questions call Chris Hosch at the Northeast Region Office at (509)675-2625 or Steve Teitzel at the Product Sales and Leasing Division Office in Olympia at (360)902-1741.

TIMBER SALE MAP

SALE NAME: Q SOUTH JUMBO SORTS
AGREEMENT #: 30-102451
TOWNSHIP(S): T38R37E, T39R37E
TRUST(S): Common School and Indemnity (3)

REGION: Northeast Region
COUNTY(S): Stevens
ELEVATION RGE: 2160-3480

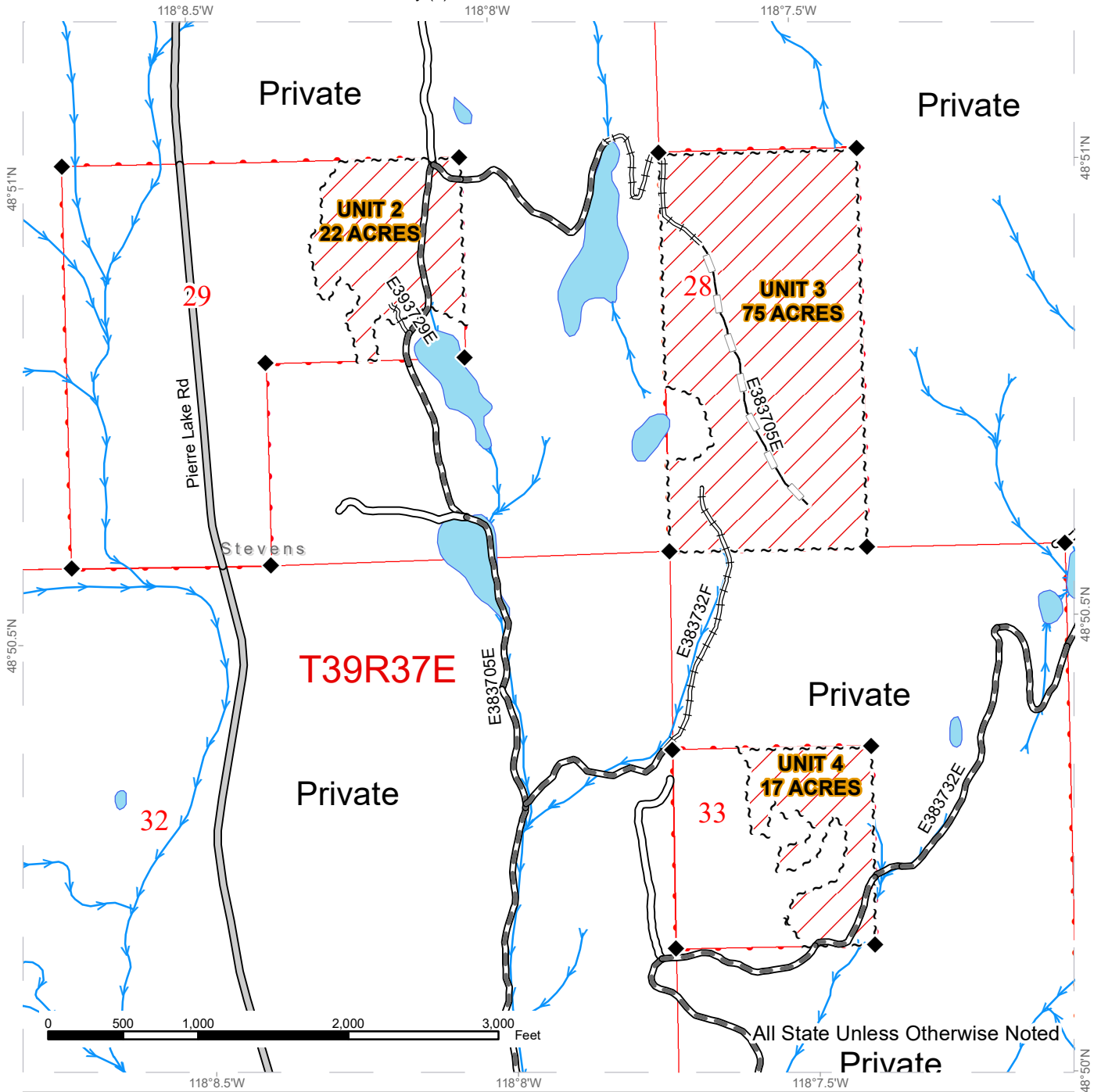


Public Land Survey Sections	County Road	Streams
DNR Managed Lands	Existing Roads	Survey Monument
Variable Retention Harvest	Required Pre-Haul Maintenance	Gate
Sale Boundary Tags	Optional Pre-Haul Maintenance	

TIMBER SALE MAP

SALE NAME: Q SOUTH JUMBO SORTS
AGREEMENT #: 30-102451
TOWNSHIP(S): T38R37E, T39R37E
TRUST(S): Common School and Indemnity (3)

REGION: Northeast Region
COUNTY(S): Stevens
ELEVATION RGE: 2160-3480

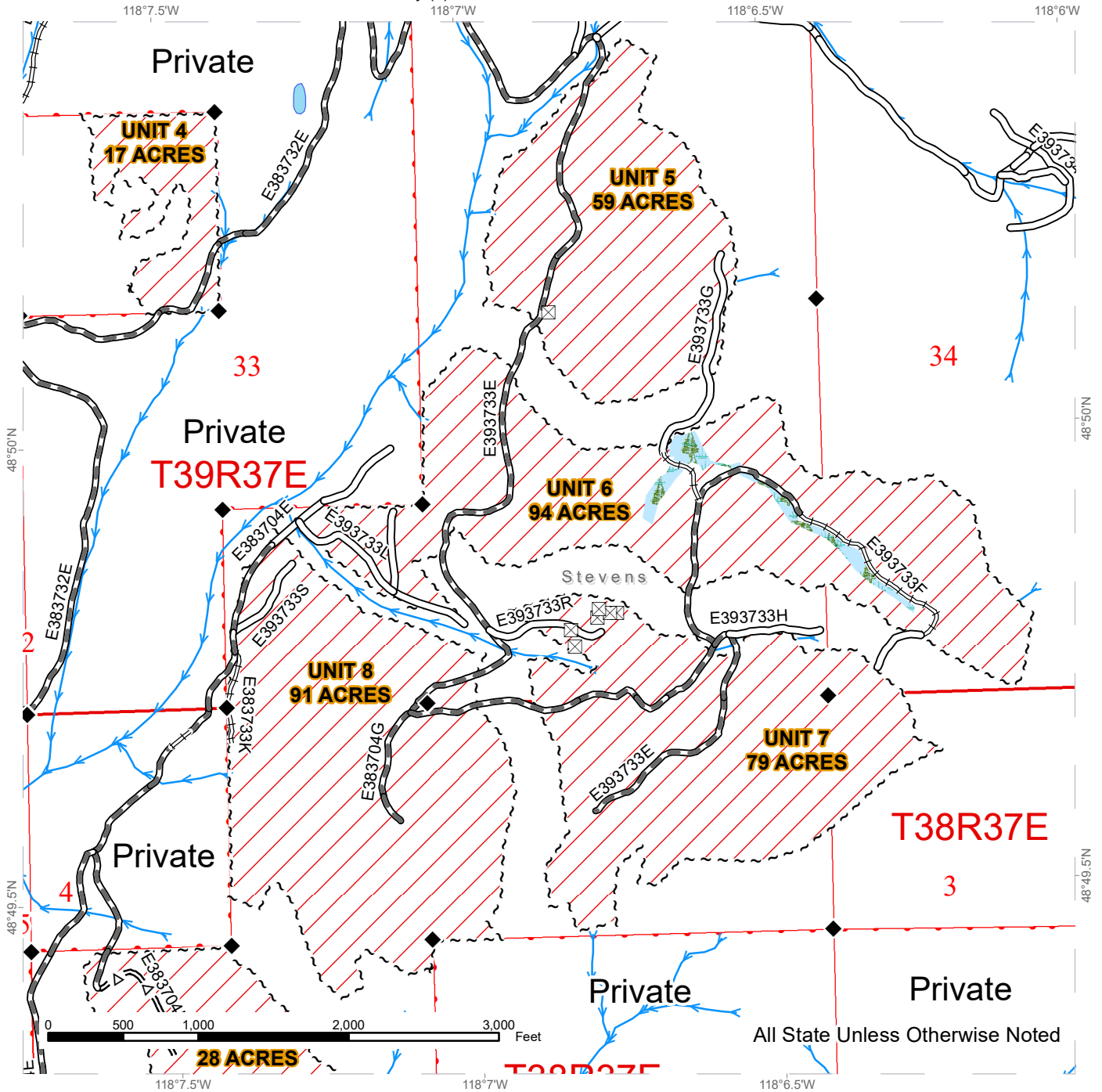


Public Land Survey Sections	County Road	Streams
DNR Managed Lands	Existing Roads	Survey Monument
Variable Retention Harvest	Required Pre-Haul Maintenance	
Sale Boundary Tags	Required Reconstruction	
	Optional Reconstruction	

TIMBER SALE MAP

SALE NAME: Q SOUTH JUMBO SORTS
AGREEMENT #: 30-102451
TOWNSHIP(S): T38R37E, T39R37E
TRUST(S): Common School and Indemnity (3)

REGION: Northeast Region
COUNTY(S): Stevens
ELEVATION RGE: 2160-3480



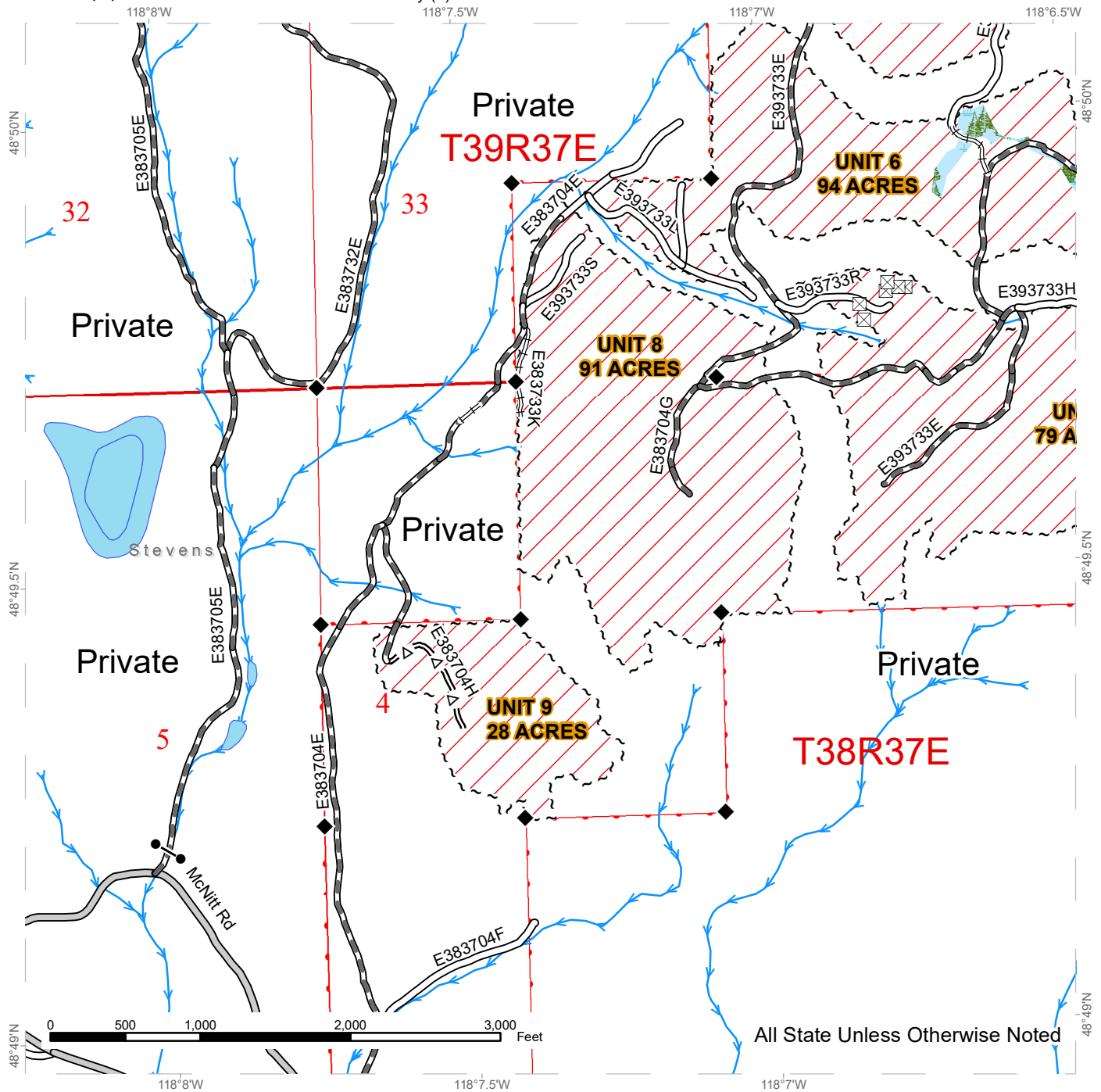
All State Unless Otherwise Noted

Public Land Survey Sections	Existing Roads	Streams
DNR Managed Lands	Required Pre-Haul Maintenance	Survey Monument
Variable Retention Harvest	Required Reconstruction	Special Feature - ELZ
Sale Boundary Tags	Optional Pre-Haul Maintenance	
Forested Wetland		

TIMBER SALE MAP

SALE NAME: Q SOUTH JUMBO SORTS
AGREEMENT #: 30-102451
TOWNSHIP(S): T38R37E, T39R37E
TRUST(S): Common School and Indemnity (3)

REGION: Northeast Region
COUNTY(S): Stevens
ELEVATION RGE: 2160-3480



All State Unless Otherwise Noted

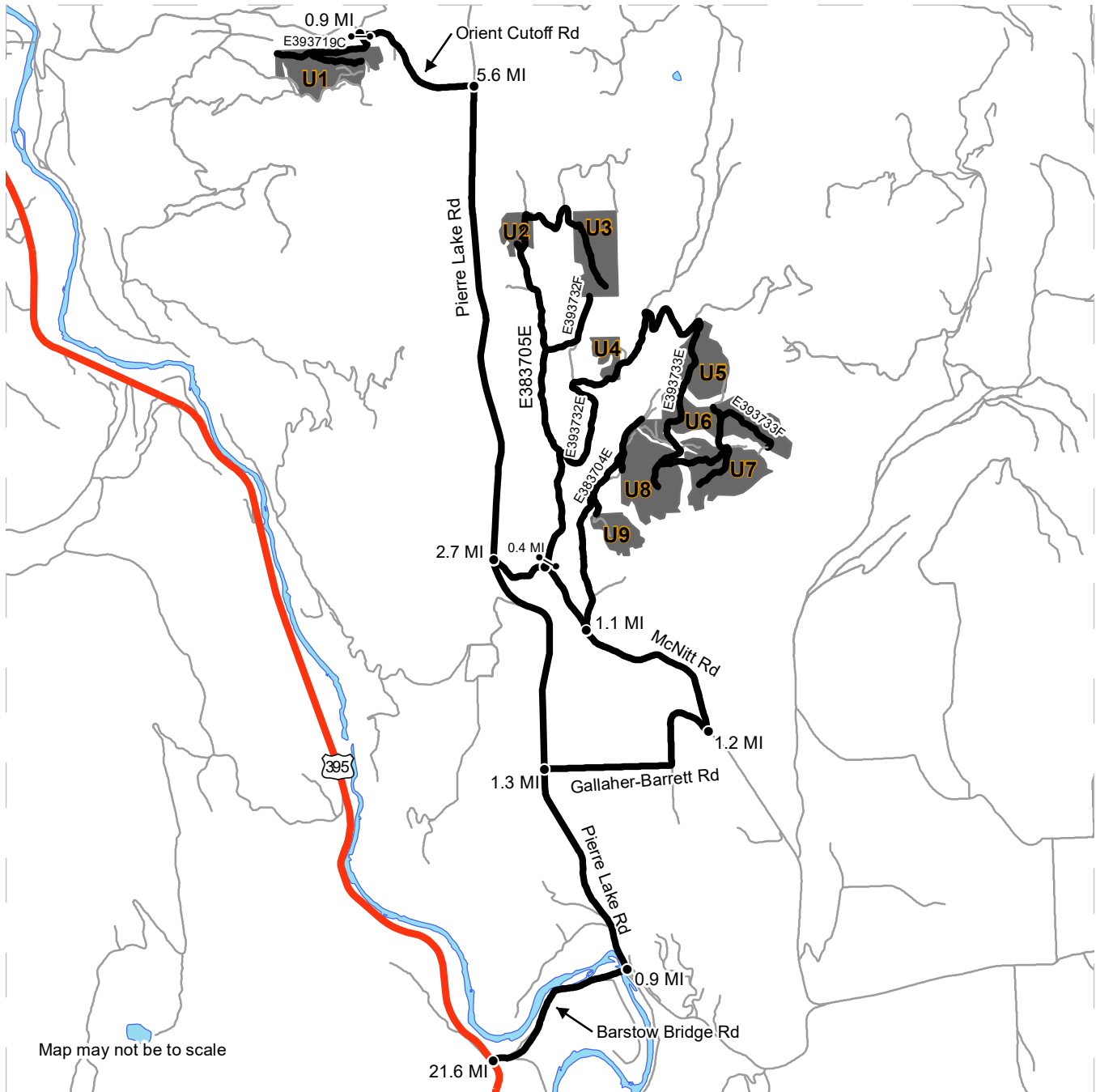
Public Land Survey Sections	County Road	Streams
DNR Managed Lands	Existing Roads	Survey Monument
Variable Retention Harvest	Required Pre-Haul Maintenance	Gate
Sale Boundary Tags	Required Reconstruction	Special Feature - ELZ
Forested Wetland	Optional Pre-Haul Maintenance	



DRIVING MAP

SALE NAME: Q SOUTH JUMBO SORTS
AGREEMENT#: 30-102451
TOWNSHIP(S): T38R37E, T39R37E
TRUST(S): Common School and Indemnity (3)

REGION: Northeast Region
COUNTY(S): Stevens
ELEVATION RGE: 2160-3480



Map may not be to scale

	Timber Sale Unit
	Haul Route
	Other Route
	Highway
	Distance Indicator
	Gate

DRIVING DIRECTIONS:

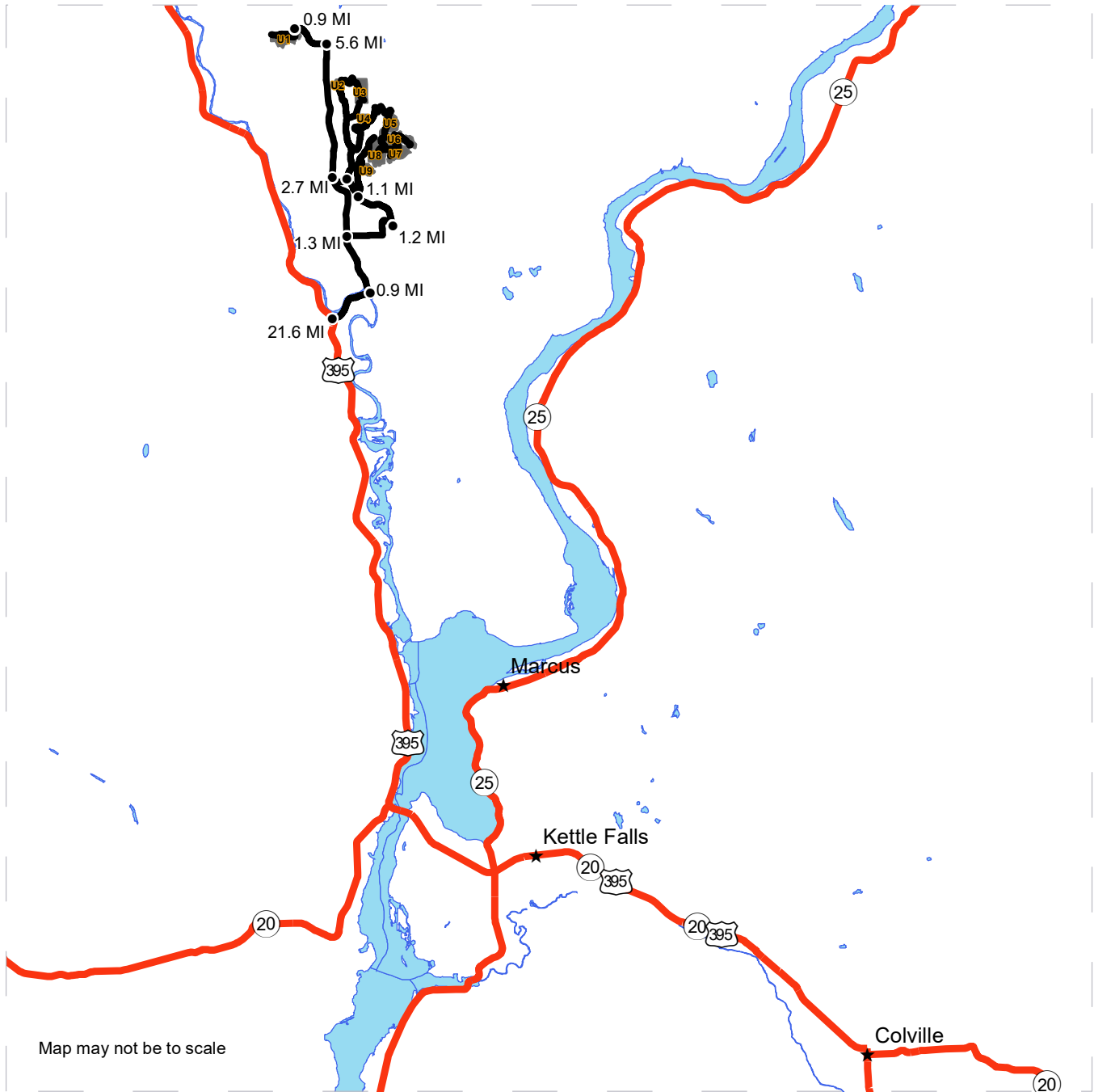
To Unit 1: Travel north from Colville on Hwy 395 for 21.6 miles to Barstow. Turn right on Barstow Bridge Road and go 0.9 miles. Turn left on Pierre Lake Road and go 5.6 miles. Turn left on Orient Cutoff Road and go 0.9 miles and take a left going through cable gate following signs and timbersale map to access Unit 1. To Units 2-7: Travel north from Colville on Hwy 395 for 21.6 miles to Barstow. Turn right on Barstow Road and go 0.9 miles. Turn left on Pierre Lake Road and go 2.7 miles. Turn right on McNitt Road and go 0.4 miles and take left through the gate. Follow signs and timber sale map to access Units 2, 3, 4, 5, 6 and 7. To Unit 8 and 9: Travel north from Colville on Hwy 395 for 21.6 miles to Barstow. Turn right on Barstow Road and go 0.9 miles. Turn left on Pierre Lake Road and go 1.3 miles. Turn right on Barrett / Gallaher Road and go 1.2 miles to McNitt Road. Take a left on McNitt road and travel 1.1 miles and then take a right through the gate following signs and timber sale map to access Units 8 and 9.



DRIVING MAP

SALE NAME: Q SOUTH JUMBO SORTS
AGREEMENT#: 30-102451
TOWNSHIP(S): T38R37E, T39R37E
TRUST(S): Common School and Indemnity (3)

REGION: Northeast Region
COUNTY(S): Stevens
ELEVATION RGE: 2160-3480



- Timber Sale Unit
- Haul Route
- Highway
- Town
- Distance Indicator

DRIVING DIRECTIONS:

To Unit 1: Travel north from Colville on Hwy 395 for 21.6 miles to Barstow. Turn right on Barstow Bridge Road and go 0.9 miles. Turn left on Pierre Lake Road and go 5.6 miles. Turn left on Orient Cutoff Road and go 0.9 miles and take a left going through cable gate following signs and timbersale map to access Unit 1. To Units 2-7: Travel north from Colville on Hwy 395 for 21.6 miles to Barstow. Turn right on Barstow Road and go 0.9 miles. Turn left on Pierre Lake Road and go 2.7 miles. Turn right on McNitt Road and go 0.4 miles and take left through the gate. Follow signs and timber sale map to access Units 2, 3, 4, 5, 6 and 7. To Unit 8 and 9: Travel north from Colville on Hwy 395 for 21.6 miles to Barstow. Turn right on Barstow Road and go 0.9 miles. Turn left on Pierre Lake Road and go 1.3 miles. Turn right on Barrett / Gallaher Road and go 1.2 miles to McNitt Road. Take a left on McNitt road and travel 1.1 miles and then take a right through the gate following signs and timber sale map to access Units 8 and 9.





TIMBER NOTICE OF SALE

SALE NAME: STRIPED FLY

AGREEMENT NO: 30-102915

AUCTION: April 27, 2022 starting at 10:00 a.m.,
Olympic Region Office, Forks, WA

COUNTY: Clallam

SALE LOCATION: Sale located approximately 15 miles northwest of Port Angeles

**PRODUCTS SOLD
AND SALE AREA:**

Timber Sale Boundary tags, flagged line, timber type change, the PA-I-3000 road, and the PA-I-3020 road.

All forest products above located on part(s) of Sections 26 all in Township 31 North, Range 8 West, W.M., containing 33 acres, more or less.

CERTIFICATION: This sale is certified under the Sustainable Forestry Initiative® program Standard (cert no: PwC-SFIFM-513)

ESTIMATED SALE VOLUMES AND QUALITY:

Species	Avg DBH	Ring Count	Total MBF	MBF by Grade								
				1P	2P	3P	SM	1S	2S	3S	4S	UT
Douglas fir	15.1	8	326						154	102	62	8
Red alder	13.9		60						4	4	44	8
Maple	11.8		35							6	23	6
Red cedar	25		25							24	1	
Grand fir	12.6		18						8	7	1	3
Hemlock	11.4		5							2	2	
Sale Total			469									

MINIMUM BID: \$114,000.00

BID METHOD: Sealed Bids

PERFORMANCE

SECURITY: \$22,800.00

SALE TYPE: Lump Sum

EXPIRATION DATE: October 31, 2022

ALLOCATION: Export Restricted

BID DEPOSIT: \$11,400.00 or Bid Bond. Said deposit shall constitute an opening bid at the appraised price.

HARVEST METHOD: Approximately 20% Cable, 80% Ground Based.

Forest products sold under this contract shall be harvested and removed using cable, cable-tethered, and ground based equipment as shown on the Logging Plan Map. Feller bunchers will not operate on sustained slopes over 45%. Tether assisted equipment will not operate on slopes over 60%. Authority to use other equipment or to operate outside the equipment specifications detailed above must be approved in writing by the State.

Falling, yarding and timber haul is not allowed on weekends or State recognized holidays, or from the hours of 8:00 PM to 6:00 AM; unless approved by the Contract Administrator.



TIMBER NOTICE OF SALE

ROADS: 1.70 stations of required construction. 2.00 stations of required reconstruction. 5.20 stations of optional reconstruction. 180.80 stations of required prehaul maintenance.

Rock hauling and road construction will not be permitted on weekends or State recognized holidays; from the hours of 8:00 PM to 6:00 AM; or November 1st through March 31st unless approved by the Contract Administrator.

ACREAGE DETERMINATION

CRUISE METHOD: Sale acreage was 100% GPS'd. Sale units were cruised using a variable plot sample.

FEES: \$8,432.00 is due on day of sale. \$9.00 per MBF is due upon removal. These are in addition to the bid price.

SPECIAL REMARKS: There are locked gates on the PA-I-3000 road and the PA-I-3020 road. Contact the Olympic Region Dispatch Center at 360-374-2800 to obtain an AA-1 key.

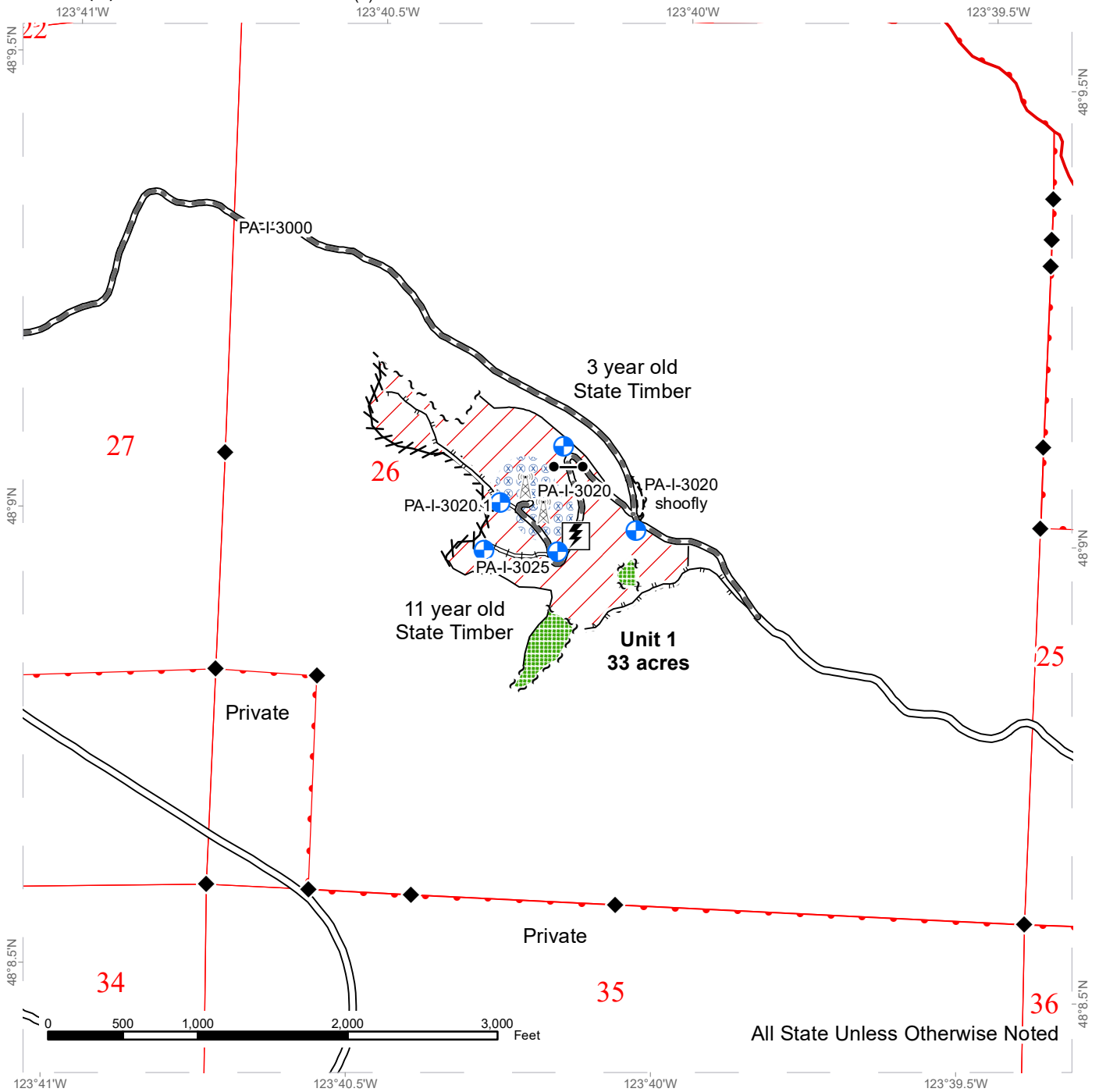
All trees 60 inches in Diameter at Breast Height (DBH) and greater shall not be felled unless for safety reasons, which must be approved by the Contract Administrator. If trees 60 inches DBH or greater needs to be felled for safety reasons, trees will be left where felled.

Approximately 13 acres of mastication is required in Unit 1 as shown on the Logging Plan Map.

TIMBER SALE MAP

SALE NAME: STRIPED FLY
AGREEMENT #: 30-102915
TOWNSHIP(S): T31R8W
TRUST(S): State Forest Transfer (1)

REGION: Olympic Region
COUNTY(S): Clallam
ELEVATION RGE: 720-1040



All State Unless Otherwise Noted

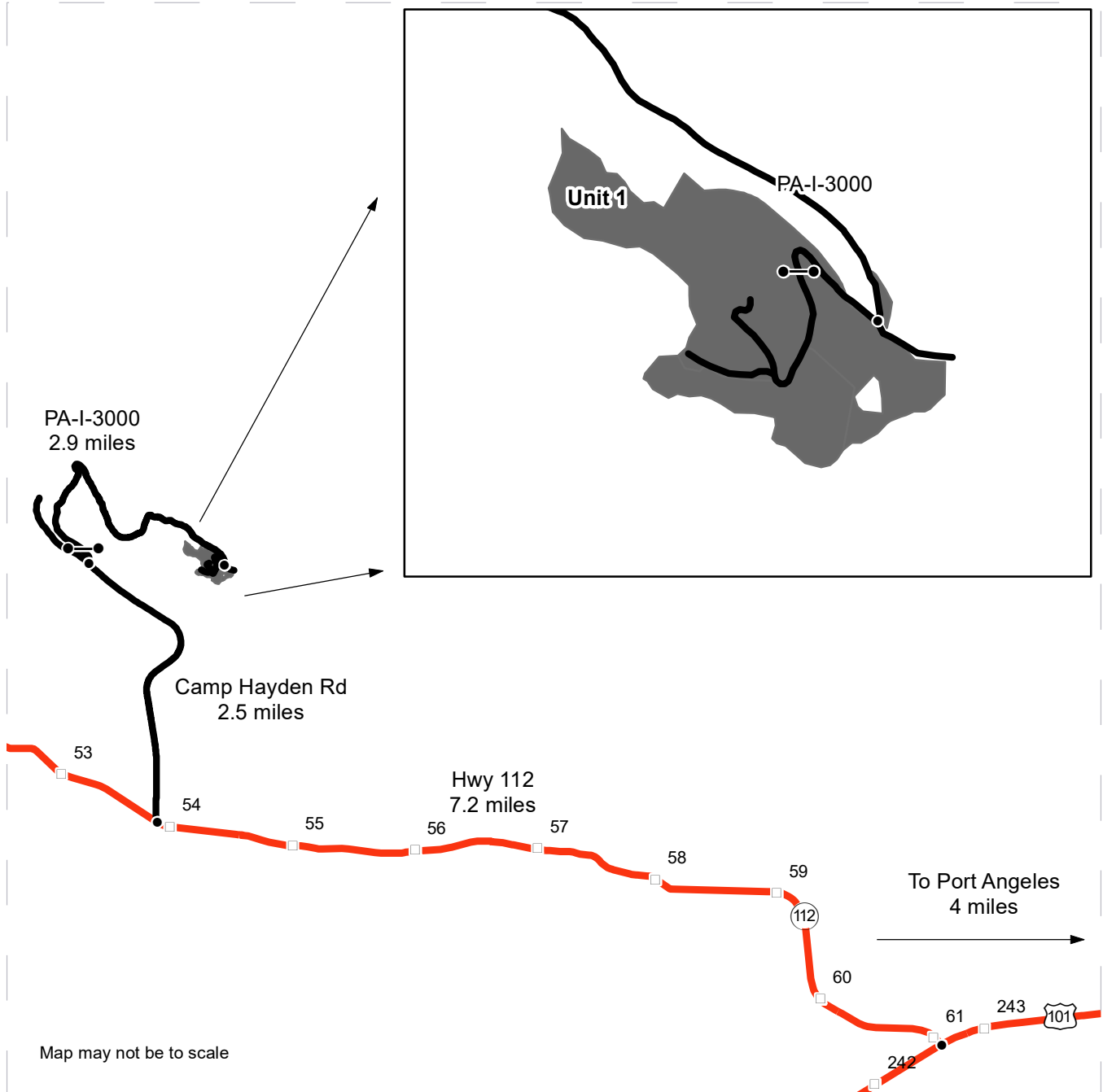
	Variable Retention Harvest		Sale Boundary Tags		Existing Roads		Survey Monument
	Leave Tree Area		Leave Tree Tags		Required Reconstruction		Utility Box
	Hazard Abatement Area		Flag Line		Required Pre-Haul Maintenance		Communication Tower
	DNR Managed Lands		Timber Type Change		Designated Skid Trail		Gate (AA-1)
							Landing - Proposed



DRIVING MAP

SALE NAME: STRIPED FLY
 AGREEMENT#: 30-102915
 TOWNSHIP(S): T31R8W
 TRUST(S): State Forest Transfer (1)

REGION: Olympic Region
 COUNTY(S): Clallam
 ELEVATION RGE: 720-1040



- Timber Sale Unit
- Highway
- Haul Route
- Milepost Markers
- Gate (AA-1)
- Distance Indicator

DRIVING DIRECTIONS:
 Unit 1: Head west from Port Angeles on US-101 for 4 miles. Turn right onto Hwy 112 and continue for 7.2 miles. Turn right onto Camp Hayden Rd and continue for 2.5 miles. Then turn right onto PA-I-3000 and proceed through locked gate (AA-1). Continue for 2.9 miles before arriving at Unit 1



**State of Washington
Department of Natural Resources**

SEALED BID FORM

Sale Name _____ Agreement Number _____

_____ hereby submits the following bid for timber.
(Print full, legal company name)

(Street address, City, State, Zip Code)

(Phone Number)

Lump Sum Bid (Not Including Fees) \$ _____ **For Total Sale**

Weight Scale Sale Bid (Not Including Fees) \$ _____ / **Ton**

Scribner Scale Sale Bid (Not Including Fees) \$ _____ / **MBF For Biddable Species**

BID DEPOSIT

Bid Deposit Amount: \$ _____

Bid Deposit Type:

- Cash, certified check, cashiers check, or money order
- Per Sale Bid Bond
- Statewide Bid Bond, Number _____

Within 30 days of confirmation date the successful bidder agrees to furnish Performance Security acceptable to the State in the amount specified on the Notice of Sale. Performance Security must guarantee performance of all provisions of the contract and payment of any damages caused by operations under the contract or resulting from the successful bidders noncompliance with any rule or law.

Bidder's Warranty and Bid Signature

By signing and submitting this bid as an offer to purchase forest products from the State, the Bidder hereby warrants to the State that they have had an opportunity to fully inspect the sale area and the forest products being sold. Bidder further warrants to the State that they enter this bid based upon their own judgments of the value of the forest products, formed after their own examination and inspection of both the timber sale area and the forest products being sold. Bidder also warrants to the State that they enter this bid without any reliance upon the volume estimates, acreage, appraisals, pre-bid documentation, or any other representation by the Washington State Department of Natural Resources.

_____ Date _____
(Signature of Authorized Representative submitting this bid)

(Print name and title of Authorized Representative submitting this bid)

Note: all sales are subject to confirmation by the Commissioner of Public Lands (Refer 79.15.120)

Instructions For Completing Sealed Bid Form

All bids submitted for the purchase of forest products being sold by the Washington State Department of Natural Resources must have an original signature on behalf of the person or entity submitting the bid, and must be on the form provided in this booklet or a photocopy thereof. The DNR will not accept bids that are not signed, and will not accept bids that are not on the current, approved bid form. All appropriate blanks on bid form must be completed including the bid bond number if the bidder is relying upon a bid bond for bid deposit.

For more specific information, contact the appropriate region office.

In-Person Bids

- A. Sealed bids must be in auction box before 10:00 a.m. on the day of auction at the location specified in the Timber Notice of Sale.
 - B. Sealed bids must be submitted in an envelope with the name of the sale, the bidder's name and the contract number clearly written on the outside of the envelope. The full legal name and business address of the bidder must be inserted where indicated on the form, and must be on the bid bond and timber sale contract. The bid form must be signed by an authorized representative. When a bidder has more than one person authorized to bid, documentation of those persons with signature authority for bidding must accompany the bid or be on file at the region office. Sealed bid envelopes are available at all region offices. One bid per envelope.
 - C. Sealed bid envelopes **must** contain a completed bid form and a bid deposit.
 - D. Sealed bid envelopes **may** contain a check for the Initial Deposit amount and a check for fees.
-

Mailed Bids

- A. Bids that are mailed are required to have printed on the outside: "DO NOT OPEN UNTIL SALE DATE. SEALED BID ENCLOSED". The sealed bid envelope(s) will be enclosed inside the mailed-in envelope. Mailed bids must be submitted in an envelope with the name of the sale, the bidder's name and the agreement number clearly written on the outside of the envelope. The full legal name and business address of the bidder must be inserted where indicated on the form, and must be the same on the bid bond and timber sale contract. The Sealed Bid Form must be signed by an authorized representative. When a bidder has more than one person authorized to bid, documentation of those persons with signature authority for bidding must accompany the bid or be on file at the region office. Mail-in envelopes are available at all region offices. One bid per mailed-in envelope.
 - B. Bids that are mailed will be accepted up to 4:30 p.m. the last business day before the auction by the region office in which the sale is located. Bidders assume the risk for the method of delivery. The DNR assumes no responsibility for any delays caused by any delivery service.
 - C. Sealed bid envelopes **must** contain a completed bid form and a bid deposit.
 - D. Sealed bid envelopes **may** contain a check for the Initial Deposit amount and a check for fees.
-

Initial Deposit:

Lump Sum Sales - Initial Deposit must equal 10% of the total bid submitted.
(25% if the bidder is a defaulter as defined under WAC 332-140-300)

Weight Scale Sales - Initial Deposit must equal 10% of the bid per ton multiplied by the total sale estimated tonnage. (25% if the bidder is a defaulter as defined under WAC 332-140-300)

Scribner MBF Scale Sales - Initial Deposit must equal 10% of the bid per MBF multiplied by the total sale MBF. (25% if the bidder is a defaulter as defined under WAC 332-140-300)

State of Washington
Department of Natural resources

STATEWIDE BID BOND

Bond Number _____

_____ of _____,
(Principal's Name) (City, State)

hereinafter called PRINCIPAL, and _____ hereinafter called
SURETY,

a corporation organized under the laws of the State of _____, and authorized to transact surety business in the State of Washington, as SURETY, are held and firmly bound jointly and severally to the State of Washington, Department of Natural Resources, hereinafter called the STATE, in the sum of \$150,000.00 Dollars, lawful money of the United States of America. The PRINCIPAL binds itself, its heirs, executors, administrators, successors, and assigns, and the SURETY binds itself, its successors, and assigns, all jointly and severally.

This bond shall be governed by the laws of the State of Washington. In the event of a lawsuit involving this bond, a venue shall be proper only in Thurston County Superior Court.

Signed, sealed and dated this _____ day of _____, _____ .
(month) (year)

This statewide bid bond may be used for bidding between the following dates:

Starting:

Ending:

It Is Hereby Understood and Agreed:

If PRINCIPAL is an apparent high bidder, PRINCIPAL shall before 4:30 p.m ., on day of sale, pay to the STATE the amount of the initial deposit in the form of a certified check, cashier's check, bank draft, cash or money order, then this agreement shall be void for the sale on which the payment is made; otherwise, it will remain in force.

SURETY will make payment to the STATE within ten days after demand by the STATE if the PRINCIPAL shall fail to make timely payment as described above.

The SURETY may cancel this bond by sending a written notice to the STATE, not less than forty-five days before a cancellation date; liability shall terminate as to acts or omissions of the PRINCIPAL that occur after the cancellation date.

The PRINCIPAL and the SURETY executed this bond on the date first mentioned.

Principal: (Above named)

Signature: _____

Name: _____

Title: _____

Address: _____

City: _____
State & Zip Code

Surety: (Above named)

Signature: _____

Name: _____

Title: _____

Address: _____

City: _____
State & Zip Code

Surety: (Local Office of Authorized agent)

Signature: _____

Name: _____

Title: _____

Address: _____

City: _____
State & Zip Code

Notary or Company Seal in Space Above

Instructions for Completing Timber Sale Statewide Bid Bond

- A. This form is authorized for use as bid guaranty to qualify for bidding on Washington State Department of Natural Resources timber sales.
- B. The Statewide Bid Bond may be used as bid guaranty on more than one timber sale.
- C. The full legal name and business address of the PRINCIPAL must be inserted where indicated and must be the same as will appear on the bidding record and timber sale contract. The bond must be signed by an authorized person. Additionally, the name must be typed or printed below the signature and title must be shown.
- D. The full legal name and business address of the SURETY must be inserted where indicated. The bond must be signed by an authorized person. Additionally, the name must be typed or printed below the signature and the title must be shown.
- E. If the SURETY does not have a Washington State office or resident agent, but is authorized to transact surety business in the State of Washington as SURETY, it may leave this signature block blank.
- F. This form must be received by the Department of Natural Resources, Product Sales & Leasing Division, PO BOX 47016, Olympia, Washington, 98504-7016, ten days in advance of the auction.
- G. **The State reserves the right to reject *incomplete or incorrect* bid bond forms, making such forms unacceptable as bid guaranty.**

**State of Washington
Department of Natural Resources**

Timber Sale Per Sale Bid Bond

Bond Number _____

_____ of _____, hereinafter called PRINCIPAL, and _____, hereinafter called SURETY, a corporation organized under the laws of the State of _____ and authorized to transact surety business in the State of Washington, as SURETY, are held and firmly bound jointly and severally to the State of Washington, Department of Natural Resources, hereinafter called the STATE, in the sum of \$ _____ Dollars, lawful money of the United States of America. The PRINCIPAL binds itself, its heirs, executors, administrators, successors, and assigns, and the SURETY binds itself, its successors, and assigns, all jointly and severally.

This bond shall be governed by the laws of the State of Washington. In the event of a lawsuit involving this bond, venue shall be proper only in Thurston County Superior Court.

Signed, sealed, and dated this _____ day of _____, 20 _____.

BID IDENTIFICATION:

SALES NAME(S)	REQUIRED DEPOSIT	AGREEMENT NUMBER(S)

DATE OF BID: _____

It Is Hereby Understood and Agreed:

If PRINCIPAL is the high bidder on the sale(s) identified above and, within ten (10) days of the day of sale, transmits cash, certified check, cashier's check, bank draft or money order, payable to the STATE, in the amount of the bid guaranty required by the terms of the Notice of Sale, *then* this obligation shall be void; *otherwise*, it shall remain in force.

SURETY will make payment to the STATE within ten (10) days after demand by the STATE whenever the PRINCIPAL shall fail to make timely payment as described above.

IN WITNESS WHEREOF: the PRINCIPAL and the SURETY have caused this bond to be executed on the date first mentioned.

SECOND OFFICER:

Signature: _____

Name: _____

Title: _____

PRINCIPAL: (Above Named)

Signature: _____

Name: _____

Title: _____

SURETY: (Local Office of Authorized Agent)

Signature: _____

Name: _____

Title: _____

Address: _____

City: _____

State & Zip: _____

SURETY: (Above Named)

Signature: _____

Name: _____

Title: _____

Address: _____

City: _____

State & Zip _____

NOTARY OR COMPANY SEAL IN THE SPACE ABOVE

Instructions for Completing Timber Sale Per Sale(s) Bid Bond

- A. This form is authorized for use as bid guaranty to qualify for bidding on Washington State Department of Natural Resources timber sales.
- B. The Timber Sale Per Sale Bid Bond may be used as bid guaranty on more than one timber sale auction held the same date at the same location.
- C. The full legal name and business address of the PRINCIPAL must be the same as will appear on the bidding record and timber sale contract. The bond must be signed by an authorized person, the name typed or printed, and title shown. If PRINCIPAL is a corporation, a second officer must sign in the space to the left of the signature of the officer executing for the PRINCIPAL.
- D. The full legal name and business address of the SURETY must be inserted where indicated. The bond must be signed by an authorized person. Additionally, the name must be typed or printed below the signature and the title must be shown. If this person is not an officer of the corporation, evidence of authority must be submitted.
- E. If the SURETY does not have a Washington State office or resident agent, but is authorized to transact surety business in the State of Washington as Surety, it may leave the local office signature block blank.
- F. The date of the bid bond must not be later than the auction date.
- G. **The State reserves the right to reject incomplete or *incorrect* bid bond forms, making such forms unacceptable as guaranty.**

STATE OF WASHINGTON
DEPARTMENT OF NATURAL RESOURCES

LOG SORT SEALED BID FORM

Sale Name _____ Agreement Number _____ Date _____

_____ hereby submits the following bid for delivered logs.
(Print Company Name)

_____ Telephone Number _____
(Print Name Authorized Company Representative) (Contact for bid result notification)

(Street Address)

(City, State and Zip)

Agreement Number	Sort Number	<u>Delivered Logs Bid Amount</u> (fill in one only)	
		\$ /MBF	\$ /TON

Bid Deposit Amount \$ _____

- Bid Deposit Type:**
- Cash, Certified Check, Cashiers Check, or Money Order
 - Per Sale Bid Bond
 - Statewide Bid Bond, Number _____

The successful bidder agrees to furnish payment security acceptable to the State in the amount as described in clause P-041 of the Purchaser’s contract prior to log delivery and at a date to be determined by the State.

Bidder’s Warranty and Bid Signature

By signing and submitting this bid as offer to purchase forest products from the State, the Bidder hereby warrants to the State that they have had an opportunity to fully inspect the sale area and the forest products being sold. Bidder further warrants to the State that they enter this bid based solely upon their own judgment of the value of the forest products, formed after their own examination and inspection of both the timber sale area and the forest products being sold. Bidder also warrants to the State that they enter this bid without any reliance upon the volume estimates, acreage estimates, appraisals, pre-bid documentation, or any other representation by the State Department of Natural Resources.

(Signature of Authorized Representative submitting this bid)

(Date of Signature)

(Print name and title of Authorized Representative submitting this bid)

NOTES: A separate bid form is required for each log sort bid and must be delivered in a separate envelope. Photocopies of this bid form may be used. Each photocopy must have original signatures. Final contract award is contingent upon the State’s haul cost analysis. Actual haul route may vary and is subject to change at the State’s discretion. All sales are subject to confirmation by the Commissioner of Public Lands as per RCW 79.15.100.

LOG SORT SEALED BID SUPPLEMENTAL INFORMATION FORM_____
(Print Company Name)_____
(Sale Name)_____
(Agreement Number)_____
(Sort Number)_____
(email: optional for DNR production report distribution)**Log Manufacturing Specifications:****Sawlog and Peeler sorts:** Enter at least one preferred log length including trim for each log length range below.**Pole sorts (Distribution):** Enter three or more lengths. Attach preferred manufacturing information.**Pole sorts (Transmission):** Enter six or more lengths. Attach preferred manufacturing information.**Tonnage sorts:** See bid form instructions for required log lengths. Enter additional custom lengths as desired.

Log Length Ranges	Bidder's Preferred Log Lengths
16 ft. through 20 ft.	
22 ft. through 30 ft.	
32 ft. through 40 ft.	
Distribution Poles – 35 ft. through 55 ft.	
Transmission Poles – 60 ft.+	

Log Delivery Information:**1) Designate the point of delivery and address (must be a street address)**_____
(Location Name)_____
(Street Address)_____
(City, State and Zip)**2) Designate the state approved Scaling and Weighing facilities closest to the point of delivery as needed.****Scaling Location Information****Weighing Location Information**_____
(Scaling Location Name)_____
(Weighing Location Name)_____
(Third Party Scaling Organization)_____
(Weighing Location Owner)_____
(Scaling Location Street Address)_____
(Weighing Location Street Address)_____
(Scaling Location City, State and Zip)_____
(Weighing Location City, State and Zip)

Final contract award is contingent upon the State's haul cost analysis. Actual haul route may vary and is subject to change at the State's discretion. Additional terms or conditions requested by the bidder on or attached to the Log Sort Sealed Bid or Supplemental Information Forms are informational only and non-binding.

Instructions for Completing the Log Sort Sealed Bid and Supplemental Information Forms.

All bids submitted for the purchase of forest products being sold by the Washington State Department of Natural Resources must have an original signature on behalf of the person or entity submitting the bid, and must be on the form(s) provided in this booklet or a photocopy thereof. The DNR will not accept bids that are not signed, and will not accept bids that are not on the current, approved bid form. All appropriate blanks including Agreement Number, Sort Number, Bid amount (per mbf or ton as appropriate for the sort), Bid deposit amount and type. Signatures and date on bid form must be completed including the bid bond number if bidder is relying upon a bid bond for bid deposit.

Bids shall not be accepted if a completed '**Log Sort Sealed Bid Supplemental Information Form**' is not included with the approved '**Log Sort Sealed Bid Form**'.

Required log lengths for tonnage sorts: Preferred log lengths for tonnage sawlog sorts shall include the following plus any additional lengths identified on the Bid Supplemental Information form:

Species Type	Preferred Lengths
Conifer Sorts	16', 20', 24', 26', 32', 40'
Hardwood Sorts	18', 20', 26', 28', 30', 36', 38', 40'

For more specific information, contact the appropriate region office.

In-Person Bids

- A. Sealed bids must be in auction box or auction envelope before 10:00 a.m. on the day of sale at the location specified in the notice of sale.
- B. Sealed bids must be submitted in an envelope with the name of the sale, the bidder's name and the contract agreement number clearly written on the outside of the envelope. The full legal name and business address of the bidder must be inserted where indicated on the form, and must be the same as the name on the bid bond and timber sale contract. The bid form must be signed by an authorized person. When a bidder has more than one person authorized to bid, then documentation of those persons with signature authority for bidding must accompany the bid or be on file at the region office. Sealed bid envelopes are available at all region offices. One bid per envelope.
- C. Sealed bid envelopes must contain the following:
 1. A completed '**Log Sort Sealed Bid Form**';
 2. A completed '**Supplemental Information Form**' and;
 3. A bid deposit

Mailed Bids

- A. Mail-in bid envelopes are required to have printed on the outside: "DO NOT OPEN UNTIL SALE DATE. SEALED BID ENCLOSED." The sealed bid envelope(s) will be enclosed inside the mailed-in envelope. Mailed bids must be submitted in an envelope with the name of the sale, the bidder's name and the agreement number clearly written on the outside of the envelope. The full legal name and business address of the bidder must be inserted where indicated on the form, and must be the same on the bid bond and timber sale contract. The bid form must be signed by an authorized person. When a bidder has more than one person authorized to bid, then documentation of those persons with signature authority for bidding must accompany the bid or be on file at the region office. Mail-in envelopes are available at all region offices. One bid per mailed-in envelope.
- B. Mail-in or otherwise delivered bids will be accepted up to 4:30 p.m. the last business day before the auction by the region office in which the sale is located. Bidders assume the risk for the method of delivery they chose. The DNR assumes no responsibility for any delays caused by any delivery service.
- C. Sealed bid envelopes must contain the following:
 1. A completed '**Log Sort Sealed Bid Form**';
 2. A completed '**Log Sort Sealed Bid Supplemental Information Form**' and;
 3. A bid deposit

Department of Natural Resources Region Offices

Olympia Headquarters

1111 Washington St SE
MS 47000
Olympia, WA 98504-7000
(360) 902-1000
www.dnr.wa.gov

Product Sales &

Leasing Division

1111 Washington St SE
MS 47014
Olympia, WA 98504-7014
(360) 902-1600

South Puget Sound Region

950 Fairman Ave N
Enumclaw, WA 98022-9282
(360) 825-1631

Pacific Cascade Region

601 Bond Road
PO Box 280
Castle Rock, WA 98611-0280
(360) 577-2025

Southeast Region

713 Bowers Road
Ellensburg, WA 98926-9301
(509) 925-8510

Northwest Region

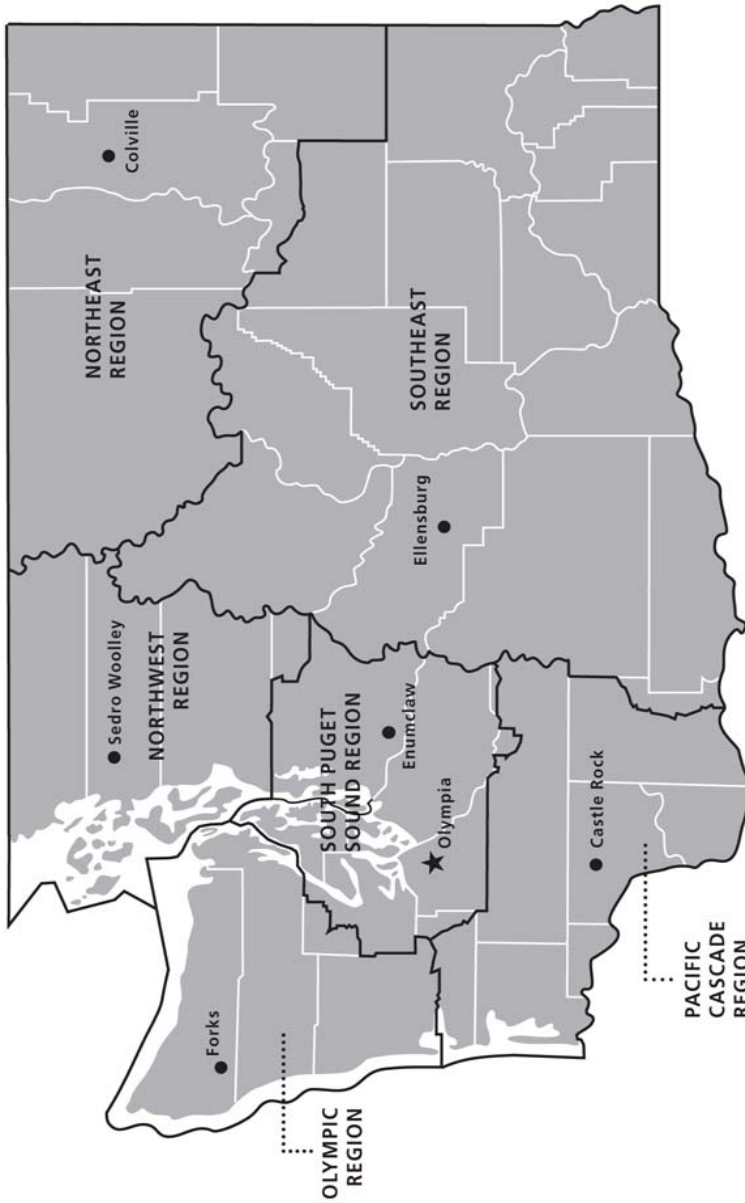
919 N Township St
Sedro Woolley,
WA 98284-9384
(360) 856-3500

Olympic Region





411 Tillicum Lane
Forks, WA 98331-9271
(360) 374-2800

Northeast Region

225 S Silke Road
PO Box 190
Colville, WA 99114-0190
(509) 684-7474



DNR REGIONS

-  DNR Region Boundaries
-  County Boundaries
-  DNR Region Office
-  Olympia Headquarters



WASHINGTON STATE DEPT OF
**NATURAL
RESOURCES**



For more information about how public lands are managed visit DNR's web page at www.dnr.wa.gov

Fire, Burn Ban Information and Region Offices
Toll Free: 1-800-527-3305 General TTY: 7-1-1





WASHINGTON STATE DEPT OF
**NATURAL
RESOURCES**

1111 WASHINGTON ST SE
MS 47014
OLYMPIA WA 98504-7014

www.dnr.wa.gov

For alternate formats
of this document,
Call (360) 902-1000
TRS: 7-1-1

PRINTED IN THE USA ON RECYCLED PAPER

