



Public Auction Sale of Timber

July 2023

Book 1049



IMPORTANT NOTICES

Natural Resources (DNR)

Governmental Regulatory Actions or Orders

The purchaser assumes the risk of liabilities related to regulatory actions or orders by any government agency that may affect the operability of these timber sales. Such regulatory actions or orders include, but are not limited to, actions taken pursuant to the State Forest Practices Act, Chapter 76.09 RCW, and the Federal Endangered Species Act, 16 U.S.C. §§ 1531-1544. Please see timber sale contract clauses G-066 and G-220 for further information.

Threatened and Endangered Species

DNR cannot verify the presence or absence of any threatened or endangered species that may affect the operability of the timber sale. Purchasers must rely on their own assessments.

Export Restricted

All timber purchased under these state DNR contracts shall not be exported outside of the United States until the timber has been processed. Purchasers shall not violate any of the prohibitions in WAC 240-15-015 (relating to the prohibitions on export and substitution), WAC 240-15-025 (relating to reporting requirements), and WAC 240-15-030 (relating to enforcement). If purchasers knowingly violate WAC 240-15-015, purchasers shall be barred from bidding on or purchasing export restricted timber as provided.

Cover photos

Timber Sales in this book are from state trust lands, managed to help build K-12 public schools, state universities, colleges, prisons, mental hospitals, the state Capitol; and to support local services in many counties.

Top right: Landscape view of DNR-managed trust lands in western Washington. Photo courtesy of DNR staff.

Second down right: Timber harvest operations on DNR-managed trust land. Photo courtesy of DNR staff.

Third down right: Log truck loaded with timber harvested from DNR-managed trust land. Photo courtesy of DNR staff.

Bottom right: Marcus Whitman Elementary School in Richland Washington. Photo courtesy of Richland School District.

Bottom middle: Storytime at the Shelton Timberland Library. Photo courtesy of Timberland Regional Library.

Bottom left: Douglas-fir seedlings growing at the Webster Nursery. Many of these seedlings will be planted following timber harvest on DNR-managed trust lands. Photo courtesy of DNR staff.

Table of Contents

Certification Opportunities for DNR Timber Purchasers	Page 3
Bidder/Purchaser Auction and Bidding Information	Page 5
Summary of All Sales Being Offered in July	Page 9
Power Plant	Page 11
Wishbone	Page 15
Q LeClerc Highway	Page 21
Pretender SWT	Page 27
TCB 23	Page 33
Twayblade Thin VRH	Page 37
Sealed Bid Form and Instructions	Page 43
Statewide Bid Bond and Instructions	Page 45
Timber Sale per Sale Bid Bond and Instructions	Page 49
Log Sort Sealed Bid Form and Instructions	Page 53



Certification Opportunities for DNR Timber Purchasers

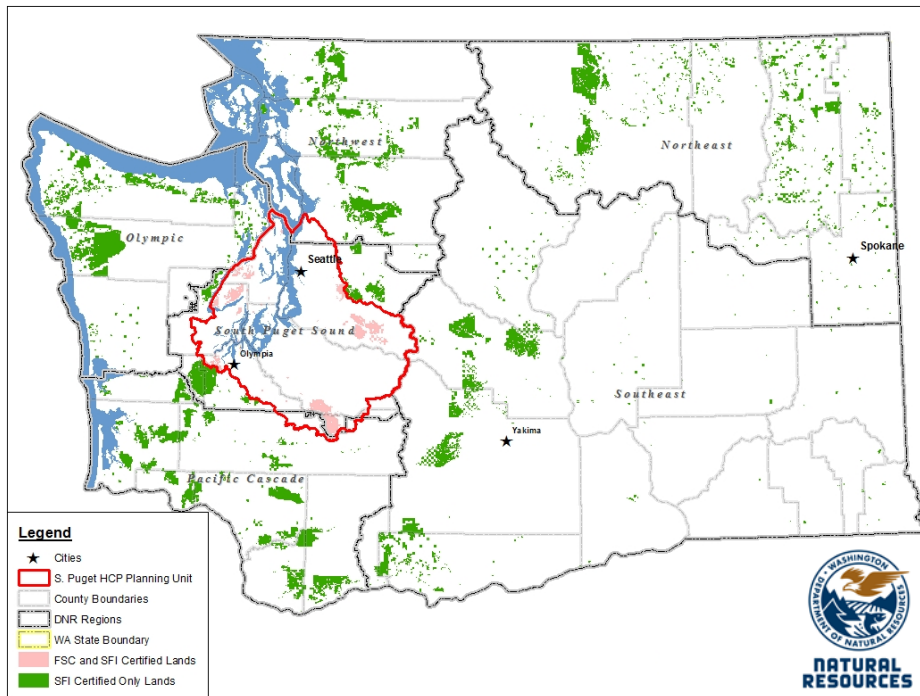
Certified forests are grown to an approved set of standards which demonstrate environmentally responsible, socially beneficial, and economically viable management practices that promote responsible forestry. This unique commitment to responsible forestry recognizes that forest landowners play a critical role in ensuring the long-term health and sustainability of our forests.

Forest Stewardship Council® (FSC®) is an independent, non-profit organization that promotes responsible management of the world's working forests through the development of forest management standards, a voluntary certification system, and trademarks that provide recognition and value to products bearing the FSC label in the marketplace. FSC standards ensure forestry is practiced in an environmentally responsible, socially beneficial, and economically viable way.

Sustainable Forestry Initiative Inc. is an independent, non-profit organization internationally endorsed and accepted around the world. The Sustainable Forestry Initiative® (SFI) program is based on the premise that responsible environmental behavior and sound business decisions can coexist. Its three-chamber Board of Directors governs all aspects of the SFI® program, with equal representation from the environmental, economic, and social sectors.

Currently, all Department of Natural Resources (DNR)-managed forestlands and conservation areas in Washington State are certified under the SFI program Standard. Forestlands within DNR's South Puget Habitat Conservation Plan Planning Unit, located within parts of King, Pierce, Thurston, Lewis, Kitsap, and Mason counties, are dually certified under both the FSC-US Forest Management Standard and the SFI program Standard.

Certification under each standard involves an inspection audit of the landowner's forest management activities by an independent, accredited third-party to verify that it meets specified forest management principles. If the forest unit complies with the specific standard, the landowner receives a certificate of conformance ensuring that responsible forestry is being practiced. Both standards encourage integration of perpetual growing and harvesting of trees with strong measures to protect wildlife, plants, soil, water, and air quality. Both standards provide a seal of approval that forests certified under these principles are well-managed. The global marketplace recognizes and endorses multiple forest certification standards. Each standard has individual market niches. By being dually certified, DNR can maximize its customer base and provide choices to the consumer.



DNR's FSC certificate number is: BV-FM/COC-080501

DNR's SFI certificate number is: PwC-SFIFM-513

DNR-managed forestlands within the South Puget Habitat Conservation Plan Planning Unit (located within parts of King, Pierce, Thurston, Lewis, Kitsap, and Mason counties) are certified as being in compliance with the Forest Stewardship US Forest Management Standard.

To learn more about chain of custody and demonstrating that your timber is derived from a responsibly managed forest and/or to learn more about becoming a participant in the FSC Program, visit <https://us.fsc.org/>.

To learn more about DNR timber sales certified under the FSC Standard, visit www.dnr.wa.gov.

FSC A.C. owns all right, title, and interest in and to the Forest Stewardship Council trademarks.

All DNR-managed forested state trust lands across the state have been certified as being in compliance with the Sustainable Forestry Initiative Forest Management Standard.

To learn more about chain of custody and demonstrating that your timber is derived from a responsibly managed forest and/or to learn more about becoming a participant in the SFI program, visit www.sfiprogram.org.

To learn more about DNR timber sales certified under the SFI program Standard, visit www.dnr.wa.gov.

SFI Marks are registered marks owned by Sustainable Forestry Initiative Inc.

To learn more about certification on DNR-managed forested state trust lands, visit <https://www.dnr.wa.gov/programs-and-services/product-sales-and-leasing/timber-sales/forest-certification> or contact:

Product Sales & Leasing Division, Product Sales Section:

Michael Kearney, Division Manager, 360-902-1088, michael.kearney@dnr.wa.gov
Steve Teitzel, Operations, 360-902-1741, steve.teitzel@dnr.wa.gov

Forest Resources Division, HCP and Scientific Consultation Section:

Allen Estep, Assistant Division Manager, 360-902-2898, allen.estep@dnr.wa.gov

Washington State Department of Natural Resources (DNR)

Bidder's/Purchaser's Inspection of Sale Area and Forest Products

Acreage estimates and volume estimates contained within each timber notice of sale and each timber sale contract are made only for administrative and identification purposes. Except as expressly provided by the timber sale contract, the purchaser shall be responsible for paying the entire purchase price, even if the actual acreage or timber volume varies from the estimated quantity or volume shown.

All prospective bidders have the opportunity and are expected to inspect the sale area and the forest products located thereon. Bidders shall not rely on any representations by the State including, but not limited to, acreage estimates, volume estimates, appraisal or pre-bid documentation. The successful bidder/purchaser will further warrant that they have entered the timber sale contract without any reliance upon the DNR's volume estimates, acreage estimates, appraisals, pre-bid documentation, or any other representation by the DNR.

Any timber sale contract arising out of these public auctions will require the successful purchaser to warrant that they are entering the timber sale contract based solely upon their own judgment of the value of the forest products, formed after their own examination and inspection of both the timber sale area and the forest products being sold.

Exclusion and Disclaimer of Warranties

The PARTIES AGREE that the IMPLIED WARRANTIES OF MERCHANTABILITY AND FITNESS FOR A PARTICULAR PURPOSE, and ALL OTHER WARRANTIES EXPRESS OR IMPLIED, ARE EXCLUDED from this transaction, and shall not apply to the goods sold. For example, THE FOLLOWING SPECIFIC MATTERS ARE NOT WARRANTED, and are EXCLUDED from this transaction:

- A. ***The merchantability of the forest products.*** The use of the term "merchantable" in any document is not intended to vary the foregoing.
- B. ***The condition of the forest products.*** All forest products will be conveyed "AS IS."
- C. ***The acreage contained within any sale area.*** Any acreage descriptions appearing in the timber notices of sale, timber sale contract, timber sale map or other documents are estimates only, provided solely for administrative and identification purposes.
- D. ***The volume, quality, or grade of the forest products.*** The descriptions of the forest products to be conveyed are estimates only, made solely for administrative and identification purposes.
- E. ***The correctness of any soil or surface conditions, presale construction appraisals, investigations, and all other pre-bid documents prepared by or for the State.*** These documents have been prepared for the State's appraisal purposes only.
- F. ***That the sale area is free from threatened or endangered species, or their habitat.*** The State is not responsible for any interferences with forestry operations that result from the presence of any threatened or endangered species, or the presence of their habitat, within the sale area.
- G. That the forestry operations to be performed under this contract will be free from regulatory actions by governmental agencies. The State is not responsible for actions to enforce regulatory laws, such as the Washington Forest Practices Act (Chapter 76.09 RCW), taken by the Department of Natural Resources or any other agency that may affect the operability of these timber sales.
- H. Items contained in any other documents prepared for or by the State.

Please also see timber sale contract clause G-060 for further information.

BIDDING PROCEDURES FOR TIMBER AUCTIONS

The general requirements that follow are a part of all Timber Notices of Sale to be auctioned by the Department of Natural Resources (DNR).

General Information

The State reserves the right to waive minor irregularities and the right to reject any or all bids.

- A. This book contains the timber notices of sale and maps for each timber sale scheduled to be auctioned. More specific information can be obtained by contacting the appropriate region office at the number listed on the back cover of this book. Sales may be added to each monthly auction by the Department which are not included in this publication. This publication is not updated following original production.
- B. The timber notice of sale is a summary of sale information. For more specific information, interested parties are encouraged to view the Auction Packets on www.dnr.wa.gov. Auction Packets contain **DRAFT** copies of the timber notice of sale, map, contract, road plan, cruise data, precruise and cruise narrative, and other associated documents.
- C. Timber sale auction packets may also be obtained at no charge for individual sales by visiting the appropriate region office.
- D. Timber sale contracts contain extensive terms and conditions that will be binding upon successful high bidders. Each bidder should carefully review all terms contained in the appropriate **DRAFT** timber sale contract prior to bidding on a sale, and should review the final contract prior to signing. **DRAFT** timber sale contracts are contained in the auction packets and are available upon request at the respective region office.
- E. Sales advertised in this book are subject to the Board of Natural Resources approval before they will be sold. The Board meets and approves sales approximately six weeks prior to auction.
- F. The State does not guarantee the accuracy of any information contained herein pertaining to particular sales. Therefore, all prospective purchasers are expected to make their own independent inspections and appraisals prior to bidding.
- G. If any conflict exists between the information in the Timber Notice of Sale, timber sale map, sale auction packets and that in the timber sale contract, the signed contract will prevail.
- H. Purchasers must pay the Forest Excise Tax on the bid price, permanent road construction costs, and other considerations. The tax rate is 5% without the EARR credit and 4.2% with the credit. For more information contact the Department of Revenue, Forest Tax Section at 1-800-548-8829.
- I. **All sales are subject to confirmation by the DNR under RCW 79.15.120.**
- J. **Within 30 days of sale confirmation, the apparent high bidder will provide to the State the Performance Security specified on each Notice of Sale. The successful bidder also agrees to return a signed contract to the State within 30 days of confirmation.** Failure to provide a signed contract to the state within 30 days of confirmation may result in a loss of bidder's rights to the products sold and forfeiture of initial deposit moneys.
- K. Each DNR region office has information about sales offered in that region. For further information, contact the respective DNR region office. Region office addresses and telephone numbers appear on the back cover of this booklet.
- L. The purchaser assumes the responsibility for any costs associated with extra maintenance or repair levied by a county for any county road used by the purchaser.

Auction Time and Location

Auctions will start at 10:00 a.m. and close at 4:00 p.m. on the date and at the location specified in each Timber Notice of Sale.

Bidding Process

- A. All timber will be auctioned using the sealed bid method.
- B. Bids submitted on the day of auction must be in the bid box at the specified auction location before 10:00 a.m. The respective DNR region office must receive mailed bids by 4:30 p.m., on the last business day before the auction. Bidders assume all risk for the method of delivery.
- C. The DNR has the right to reject bid forms that are completed incorrectly. *All bid forms must have an original signature on behalf of the person or entity submitting the bid, and must be on the form provided in this booklet or a photocopy thereof. Revised documents are not permissible.* Bidding instructions are on the back of the Sealed Bid Form. A bid deposit must be included in the sealed bid envelope unless using a Timber Sale Statewide Bid Bond.
- D. All bids must include the completed Sealed Bid Form and bid deposit.
- E. Bids will be opened in each respective region in the order in which sales appear in the Public Auction Sale of Timber book (alphabetically by county and by agreement number). Sales added after the book is printed will be inserted to retain this order. Sort sales may be auctioned out of this sequence at the State's convenience.
- F. If a tie bid occurs, the names of the tie bidders will be placed in a hat and the successful bidder will be determined by a drawing.
- G. Opportunities to Withdraw Bids:
For all sales offered on a stumpage basis only, the apparent high bidder on a particular sale will have the option of withdrawing additional sealed bids submitted for any remaining sales to be auctioned. The apparent high bidder must exercise this option within two minutes after the apparent high bidder is announced. This option is not available for sales offered on a delivered basis.

Eligibility to Bid

The following criteria must be met in order to bid on State timber sales:

- 18 years of age (or have a co-signer who meets the eligibility requirements)
- Licensed to do business in the State of Washington
- Eligible to bid on Export Restricted timber
- Authorized to submit bids

Authorized Representatives

Company officers or company authorized representatives may bid on State sales, sign State documents, or sign checks. A list of authorized representatives and their specific authorities must be submitted, in writing, to the Department of Natural Resources, Product Sales and Leasing Division, P.O. Box 47014, Olympia, Washington, 98504-7014, ten days in advance of the auction. *A company owner or officer must sign this submittal.*

Bid Deposits

- A. Required bid deposits are listed on each Timber Notice of Sale.
- B. Bid deposits must be in the form of cash, certified check, cashiers' check, money order or bid bond.
- C. Bid bonds may be either a Timber Sale Per Sale Bid Bond or a Timber Sale Statewide Bid Bond.
- D. All bid deposits shall be submitted by the person or entity submitting the bid and made payable to the Department of Natural Resources. **Third party deposits will not be accepted.**

Timber Sale Per Sale Bid Bonds

- A. The Per Sale Bid Bond shall guarantee payment of the bid deposit **within ten days of auction.**
- B. The balance between the bid bond and the Initial Deposit payment is due **by 4:30 p.m., on the day of auction.**
- C. Additional forms and instructions for a Per Sale Bid Bond are available at any DNR region office.

Timber Sale Statewide Bid Bond

- A. Statewide Bid Bonds shall guarantee payment of the Initial Deposit on any statewide timber sale while the bond is in effect.
- B. The Statewide Bid Bond must be received by the Department of Natural Resources, Product Sales and Leasing Division, P.O. Box 47014, Olympia, Washington, 98504-7014, ten days in advance of the auction date. The bond shall be in the amount of \$150,000.00.
- C. Successful bidders using a Statewide Bid Bond must pay the total Initial Deposit payment (10% of the total bid price) **by 4:30 p.m., on the day of the auction.**
- D. A Statewide Bid Bond cannot be used to secure the Initial Deposit payment due the day of auction.
- E. Additional forms and instructions for a statewide bid bond are available at any DNR region office.

Payments

The initial deposit for a sale is 10% of the total bid value as submitted by the apparent high bidder (25% if the bidder is a defaulter as defined under WAC 332-140-300) and never less than \$5,000.00 for lump sum sales. For Lump Sum sales appraised at less than \$5,000.00, the entire bid value is due on day of auction.

- A. Apparent high bidders using cash, certified check, cashiers' check or money order as a bid deposit must pay the total Initial Deposit amount by 4:30 p.m. on auction day.
- B. Apparent high bidders using a Timber Sale Per Sale Bid Bond as a bid deposit must pay the difference between the bid deposit and the total initial deposit by 4:30 p.m., on the day of auction. The bid bond amount must be replaced with a certified check, cashiers' check, bank draft, cash, money order, or wire transfer within ten days of the auction.
- C. Apparent high bidders using a Timber Sale Statewide Bid Bond must pay the entire Initial Deposit amount by 4:30 p.m. on the day of auction.
- D. All payments must be in the form of a certified check, cashiers' check, bank draft, cash, money order or wire transfer.



Summary Report of All Sales for the Month of July 2023

Board Sales

<u>County</u>	<u>Region</u>	<u>Agree #</u>	<u>FSC® Sale Name</u>	<u>Volume</u>	<u>Value</u>
Clallam	Olympic	104354	POWER PLANT	1,216	\$463,000.00
King	South Puget	103629	WISHBONE	4,742	\$1,620,000.00
Pend Oreille	Northeast	104204	Q LECLERC HIGHWAY	3,450	\$816,000.00
Skagit	Northwest	104194	PRETENDER SWT	2,959	\$456,000.00
Total				12,367	\$3,355,000.00

Region Sales

<u>County</u>	<u>Region</u>	<u>Agree #</u>	<u>FSC Sale Name</u>	<u>Volume</u>	<u>Value</u>
Clallam	Olympic	103864	TCB 23	1,048	\$227,000.00
Whatcom	Northwest	94599	TWAYBLADE Thin VRH	1,640	\$134,000.00
Total				2,688	\$361,000.00



Scan with your smartphone or tablet to go to the July 2023 timber auction page



TIMBER NOTICE OF SALE

SALE NAME: POWER PLANT

AGREEMENT NO: 30-104354

AUCTION: July 26, 2023 starting at 10:00 a.m., Olympic Region Office, Forks, WA

COUNTY: Clallam

SALE LOCATION: Sale located approximately 7 miles west of Port Angeles, WA

PRODUCTS SOLD AND SALE AREA:

All timber, except trees marked with a band of blue paint or bounded out by leave tree area tags; bounded by timber sale boundary tags, flag line, red-ringed take trees and the Dan Kelly Road in Unit 1; timber sale boundary tags, the PA-I-1000 Road, Karpen Road and red-ringed take trees in Unit 2; timber sale boundary tags, red-ringed-take trees, the PA-I-4000 Road and the 11+00 spur in Unit 3; Highway 112 and red-ringed take trees in Unit 4.

All timber marked with red paint and bounded by special management unit boundary tags and carsonite posts in Unit 5.

All forest products above located on part(s) of Sections 9, 10, 15 and 16 all in Township 30 North, Range 7 West, W.M., containing 126 acres, more or less.

CERTIFICATION: This sale is certified under the Sustainable Forestry Initiative® program Standard (cert no: PwC-SFIFM-513)

ESTIMATED SALE VOLUMES AND QUALITY:

Table with columns: Species, Avg DBH, Ring Count, Total MBF, and MBF by Grade (1P, 2P, 3P, SM, 1S, 2S, 3S, 4S, UT). Rows include Douglas fir, Redcedar, Hemlock, Silver fir, Red alder, Maple, and Sale Total.

MINIMUM BID: \$463,000.00

BID METHOD: Sealed Bids

PERFORMANCE SECURITY:

\$92,600.00

SALE TYPE: Lump Sum

EXPIRATION DATE: October 31, 2024

ALLOCATION: Export Restricted

BID DEPOSIT: \$46,300.00 or Bid Bond. Said deposit shall constitute an opening bid at the appraised price.

HARVEST METHOD: 100% - Ground. Forest Products sold under this contract shall be harvested and removed using cable, cable-tethered, and ground based equipment. Cable-tethered equipment is limited to sustained slopes of 75% and less. Non-tethered self-leveling tracked equipment is limited to sustained slopes that are 45 percent and less. Rubber tired skidders are restricted unless approved by the Contact Administrator. Authority to use other



TIMBER NOTICE OF SALE

equipment or to operate outside the equipment specifications detailed above must be approved in writing by the State.

All trees 60 inches in Diameter at Breast Height (DBH) and greater shall not be felled, unless for safety reasons, which must be approved by the Contract Administrator. If trees 60 in DBH or greater need to be felled for safety reasons, trees will be left where felled.

Falling and Yarding will not be permitted from November 1 to April 30, or on weekends, State recognized holidays, or from the hours of 8:00pm to 6:00am, unless authorized in writing by the Contract Administrator

ROADS:

7.25 stations of required construction. 5.80 stations of required reconstruction. 4.80 stations of optional reconstruction. 30.40 stations of required pre-haul maintenance. 2.00 stations of optional pre-haul maintenance. 19.85 stations of decommissioning. Pre-haul maintenance, reconstruction, rock haul, timber haul and road construction will not be permitted from November 1 to April 30, or on weekends, State recognized holidays or from 8:00pm to 6:00am, unless authorized in writing by the Contract Administrator.

On the PA-I-2600, PA-I-2610, PA-I-2620 Roads and the Place Pit, no road work, right-of-way timber falling and yarding, rock pit operations or operation of heavy equipment can be performed during the marbled murrelet nesting season (April 1 through September 23) is restricted to two hours after sunrise to two hours before sunset. This restriction does not apply to hauling timber, rock or equipment.

Rock identified to be used out of a State lands rock pit shall meet specifications as identified within the Road Plan, which will be determined by the Contract Administrator. If the rock does not meet the specifications, a commercial source shall be used that does and at the Purchaser's expense. The hauling of forest products will not be permitted from November 1 to April 30 unless authorized in writing by the Contract Administrator.

ACREAGE DETERMINATION

CRUISE METHOD: Sale acreage was 100% GPS'd. Sale units were cruised using a variable plot sample.

FEES: \$20,672.00 is due on day of sale. \$9.00 per MBF is due upon removal. These are in addition to the bid price.

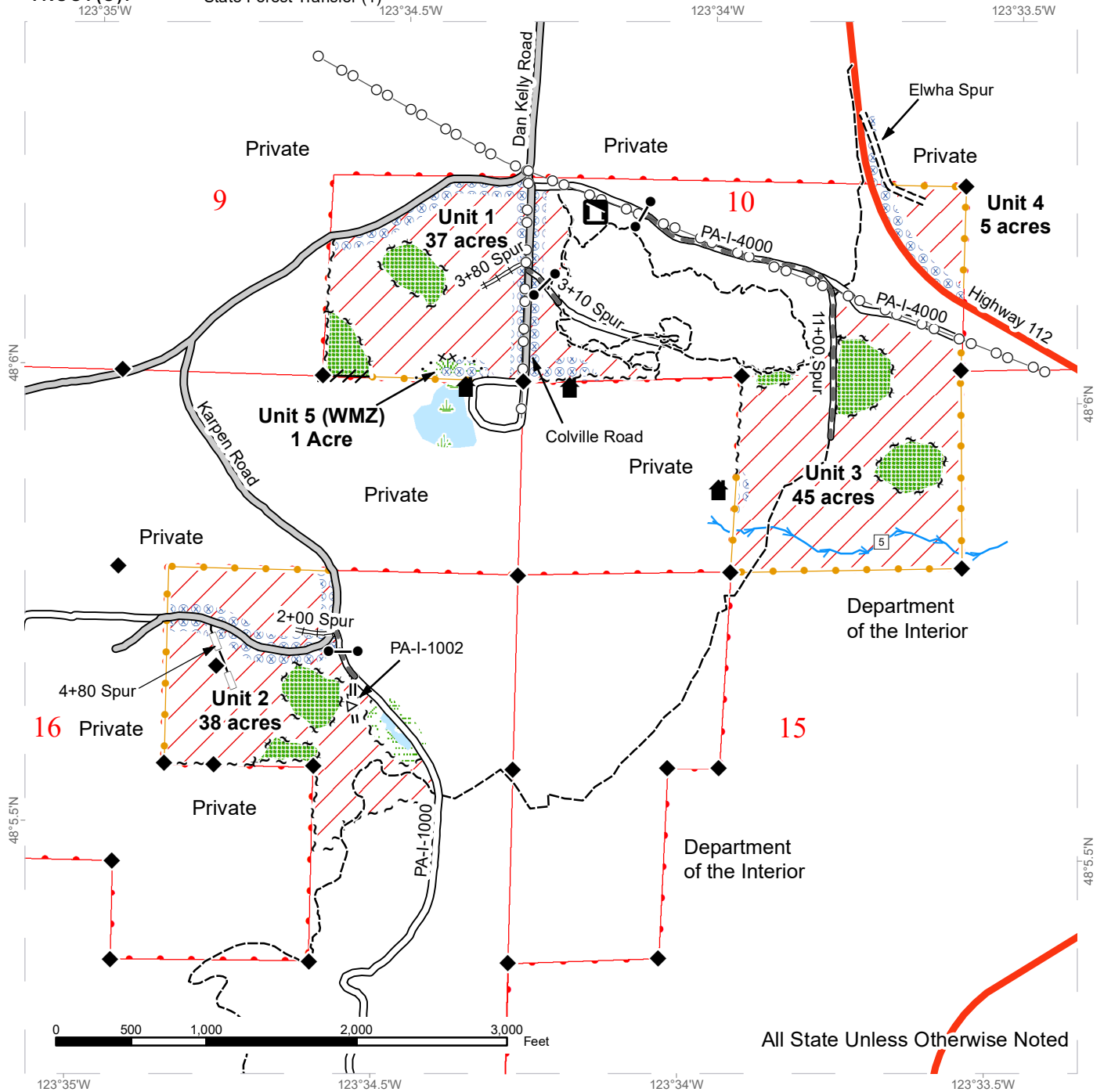
SPECIAL REMARKS: There are locked gates on the Place Pit, PA-I-4000, PA-I-1000, and the 3+10 spur - contact the Olympic Region Dispatch Center to obtain a AA-1 key.

Two weeks' notice must be given before road building or timber cutting to allow for closure of the recreation trails.

TIMBER SALE MAP

SALE NAME: POWER PLANT
AGREEMENT #: 30-104354
TOWNSHIP(S): T30R7W
TRUST(S): State Forest Transfer (1)

REGION: Olympic Region
COUNTY(S): Clallam
ELEVATION RGE: 320-720'



All State Unless Otherwise Noted

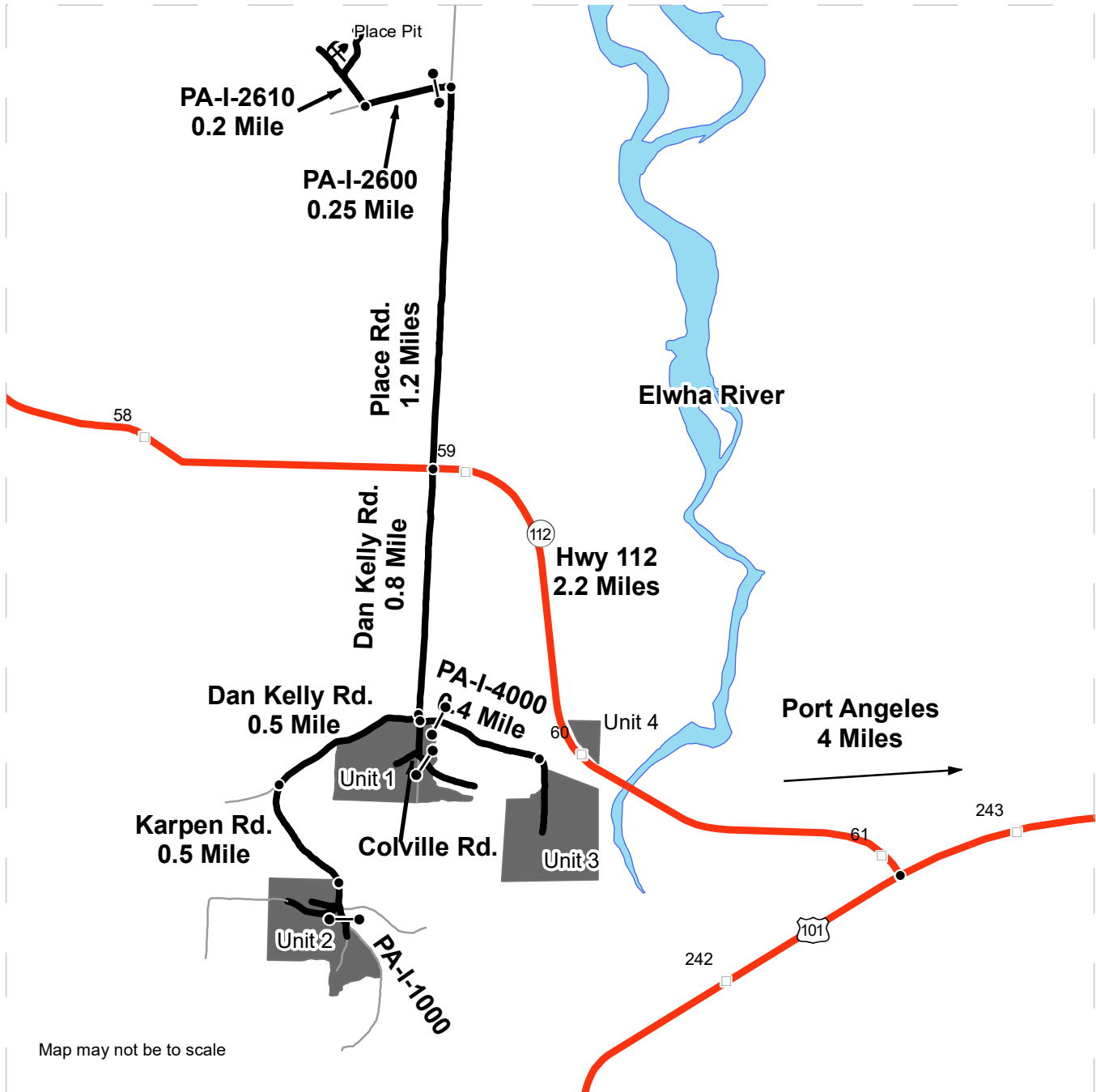
Variable Retention Harvest	Sale Boundary Tags	County Road	Streams
DNR Managed Lands	Special Mgmt Area	Optional Pre-Haul Maintenance	Recreation Trail
Wetlands - Non-forested	Leave Tree Tags	Optional Reconstruction	Stream Type
Wetland Mgt Zone	Take / Removal Trees	Existing Roads	Stream Type Break
Leave Tree Area	Flag Line	Required Pre-Haul Maintenance	Survey Monument
Hazard Abatement Area	Power Lines	Required Construction	Gate
		Required Reconstruction	Recreation Site
			Structure



DRIVING MAP

SALE NAME: POWER PLANT
 AGREEMENT#: 30-104354
 TOWNSHIP(S): T30R7W
 TRUST(S): State Forest Transfer (1)

REGION: Olympic Region
 COUNTY(S): Clallam
 ELEVATION RGE: 320-720'



Map may not be to scale

- Timber Sale Unit
- Highway
- Haul Route
- Other Road
- Milepost Markers
- Distance Indicator
- Gate
- Rock Pit

DRIVING DIRECTIONS:

Unit 1: Head west from Port Angeles on US-101 for 4 miles. Turn right onto Hwy 112 and continue for 2.2 miles. Turn left onto Dan Kelly Rd and continue for 0.8 mile. Turn left onto Colville Rd. The unit lies on both sides of Colville Rd.

Unit 2: From unit 1, return to Dan Kelly Rd, and turn left and continue for 0.5 mile. Turn left onto Karpen Rd and continue for 0.5 mile. The unit lies on the west side of Karpen Rd as well as along the west side of PA-I-1000.

Unit 3: From unit 1, head north towards Dan Kelly Rd, and turn east into the Colville Trails multi-use parking area (PA-I-4000). Continue through the parking area to the east end and go through the gate and continue onto PA-I-4000. Continue east along the PA-I-4000 for 0.4 mile, the unit will be on the right.

Unit 4: From the intersection of Hwy 101 and Hwy 112 drive west on Hwy 112 for 1.3 miles. The unit will be on your right at MP60 just after crossing the Elwha river.





TIMBER NOTICE OF SALE

SALE NAME: WISHBONE

AGREEMENT NO: 30-103629

AUCTION: July 25, 2023 starting at 10:00 a.m., COUNTY: King
South Puget Sound Region Office, Enumclaw, WA

SALE LOCATION: Sale located approximately 11 miles north of Carnation.

PRODUCTS SOLD AND SALE AREA:

All timber, except trees marked with blue paint or bounded out by yellow leave tree area tags, snags, and down timber existing more than 5 years from the day of sale, bounded by the following: white timber sale boundary tags, the 2710 Road, and property boundary marked with white Carsonite posts in Unit #1; white timber sale boundary tags, and the 2730 Road in Unit #2; white timber sale boundary tags, and the 2000 Road in Unit #3; white timber sale boundary tags, and timber type change marked with pink flagging in Unit #4;

All timber bounded by orange right of way tags in Right of Way Units #5, and #6;

All timber, except logs required to be left onsite as described in Road Plan clause 3-6, bounded by orange right of way tags in Right of Way Unit #7;

All forest products above located on part(s) of Sections 19 all in Township 26 North, Range 8 East, Sections 1, 2 and 11 all in Township 26 North, Range 7 East, W.M., containing 102 acres, more or less.

CERTIFICATION: This sale is certified under the Sustainable Forestry Initiative® program Standard (cert no: PwC-SFIFM-513)

ESTIMATED SALE VOLUMES AND QUALITY:

Table with columns: Species, Avg DBH, Ring Count, Total MBF, and MBF by Grade (1P, 2P, 3P, SM, 1S, 2S, 3S, 4S, UT). Rows include Douglas fir, Hemlock, Redcedar, Maple, Cottonwood, Red alder, and Sale Total.

MINIMUM BID: \$1,620,000.00 BID METHOD: Sealed Bids

PERFORMANCE SECURITY: \$100,000.00 SALE TYPE: Lump Sum

EXPIRATION DATE: October 31, 2025 ALLOCATION: Export Restricted

BID DEPOSIT: \$162,000.00 or Bid Bond. Said deposit shall constitute an opening bid at the appraised price.

HARVEST METHOD: Harvest activities are estimated to be 100 percent ground based harvest. Ground based equipment, with self-leveling equipment limited to sustained slopes 65 percent or less,



TIMBER NOTICE OF SALE

and all other tracked ground based equipment limited to sustained slopes 45 percent or less. Yarding may be restricted during wet weather if rutting becomes excessive, per clause H-017.

ROADS:

25.95 stations of optional construction. 196.46 stations of required prehaul maintenance. 25.95 stations of abandonment, if constructed. Purchaser maintenance on the 1000, 1200, 1210, 2000, 2700, 2710, 2710-4, 2730, 2730-2, 5000, and 5050 roads.

Rock for this proposal can be obtained from the State owned 5050 Pit at no cost to the Purchaser or any commercial rock source at the Purchaser's expense. Rock source development is to be completed per Section 6 in the Road Plan and according to the Rock Source Development Plan if rock is obtained from the 5050. Pit.

Operation of road construction equipment and rock haul will not be permitted from November 1 to April 30, unless authority to do so is granted, in writing, by the Contract Administrator. If permission is granted to operate from November 1 to April 30, the Purchaser shall comply with a maintenance plan, when a maintenance plan is determined necessary by the Contract Administrator, to include further protection of State resources per Road Plan clause 1-26. The hauling of forest products will not be permitted from November 1 to April 30 unless authorized in writing by the Contract Administrator. If permission is granted to operate from November 1 to April 30, Purchaser shall comply with a maintenance plan, when a maintenance plan is determined necessary by the Contract Administrator, to include further protection of State resources per Road Plan clause 1-26.

ACREAGE DETERMINATION

CRUISE METHOD:

Acreage for Units #1, #2, and #3 were determined by traversing boundaries by GPS. Acreage for Unit #3, and Right of Way Units #5, #6, and #7 were determined by GPS and by multiplying length times width. GPS data files are available at DNR's website for timber sale packets. See cruise narrative for cruise method.

FEES:

\$80,614.00 is due on day of sale. \$9.00 per MBF is due upon removal. These are in addition to the bid price.

SPECIAL REMARKS:

This sale contains Douglas-fir high quality logs. See Cruise.

Trees marked with three bands of blue paint in Right of Way Unit #7 along the 1000 Road are to cut and placed at each Type 3 stream crossing within 25 feet of the stream on either side of the streambank. Trees that have been pre-marked with three bands of blue paint are Douglas fir and at least twice the width of the ordinary high water mark. All other marked trees within Right of Way Unit #7 can be cut and removed once a pre-marked tree has been cut and placed in a Type 3 stream. See Road Plan clause 3-6 for additional information.

Non-tradeable individual leave trees within Units #2 and #3 are marked with two bands of blue paint.

Timber haul will not be allowed on the Stossel Creek Road between the 1000 Road and 2730 Road junction. Only equipment haul and light vehicle use will be allowed on this section of Stossel Creek Road due to maintenance and sedimentation issues.

Cut all vine maple greater than 6 feet in height within the harvest unit, leaving a stump no more than 12 inches in height.



TIMBER NOTICE OF SALE

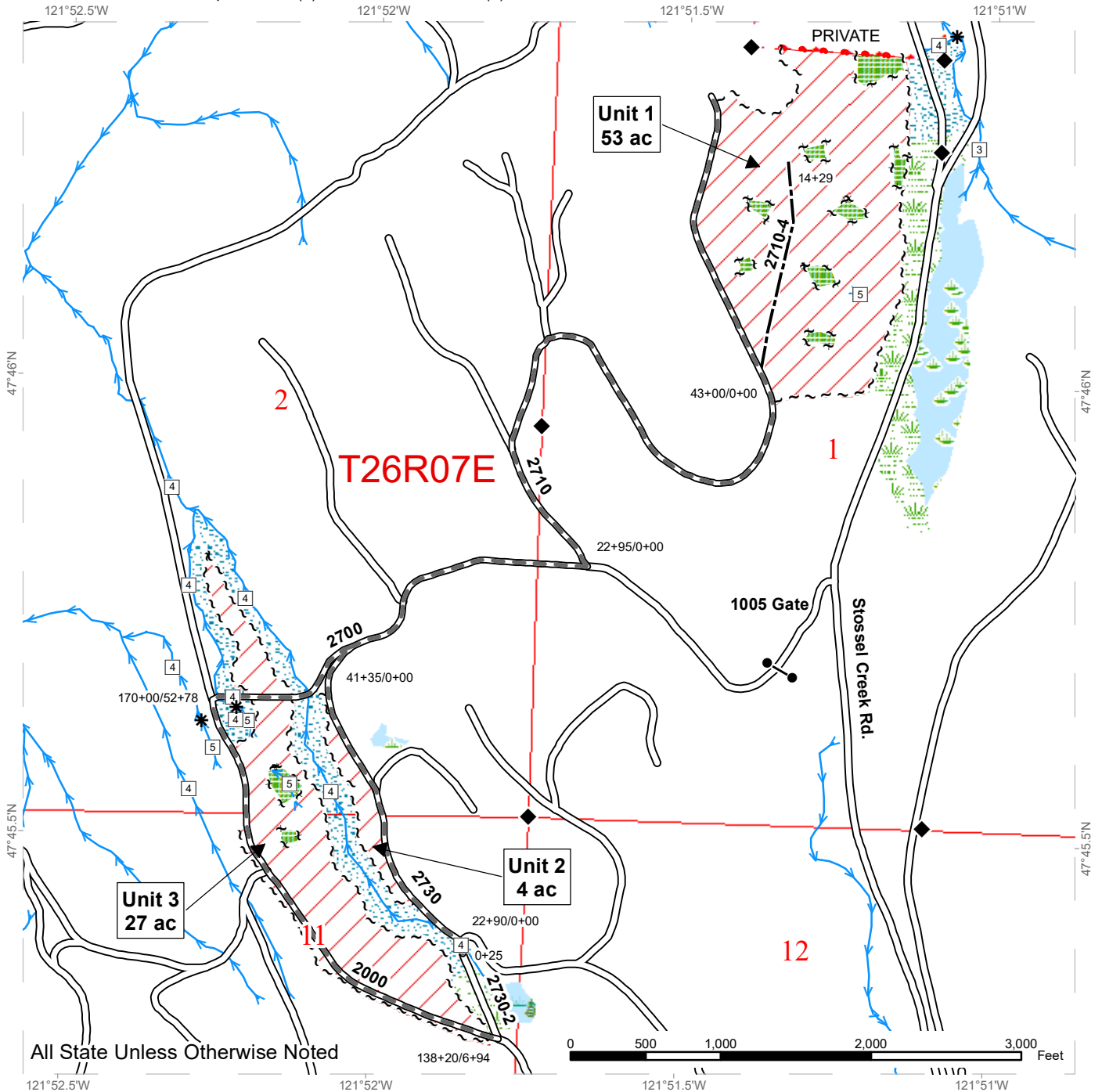
Note to cruisers and appraisers: Please refrain from leaving pink, orange or blue flagging from your cruises in or around the sale area to avoid confusion with DNR's marking. Additionally, for the safety of the public, please remove from roads all string from string boxes used during appraising or cruising this sale.

See map for gate locations. Gate keys may be obtained by contacting the South Puget Sound Region office at 360-825-1631 or by contacting Paul Footen at 425-736-1708.

TIMBER SALE MAP

SALE NAME: WISHBONE VRH
AGREEMENT #: 30-103629
TOWNSHIP(S): T26R7E, T26R8E
TRUST(S): Capitol Grant (7), State Forest Transfer (1)

REGION: South Puget Sound Region
COUNTY(S): King
ELEVATION RGE: 600-1320



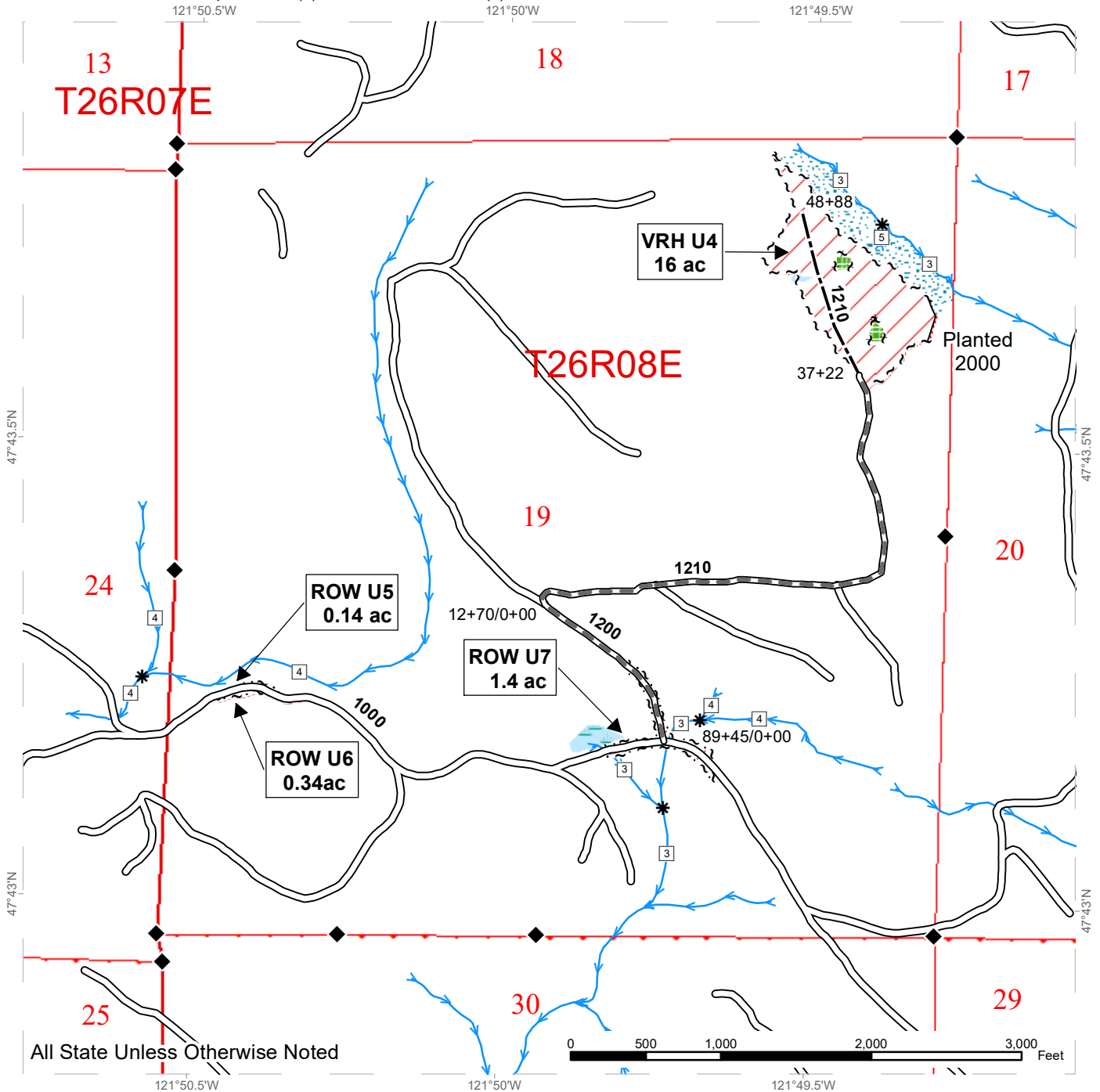
All State Unless Otherwise Noted

Variable Retention Harvest	Sale Boundary Tags	Streams
Wetlands - Non-forested	Leave Tree Tags	Stream Type
Leave Tree Area	Property Line	Stream Type Break
Riparian Mgt Zone	Existing Roads	Public Land Survey Sections
Forested Wetland	Required Pre-Haul Maintenance	Public Land Survey Townships
Wetland Mgt Zone	Optional Construction	
Survey Monument		
Gate (Master 383)		

TIMBER SALE MAP

SALE NAME: WISHBONE VRH
AGREEMENT #: 30-103629
TOWNSHIP(S): T26R7E, T26R8E
TRUST(S): Capitol Grant (7), State Forest Transfer (1)

REGION: South Puget Sound Region
COUNTY(S): King
ELEVATION RGE: 600-1320



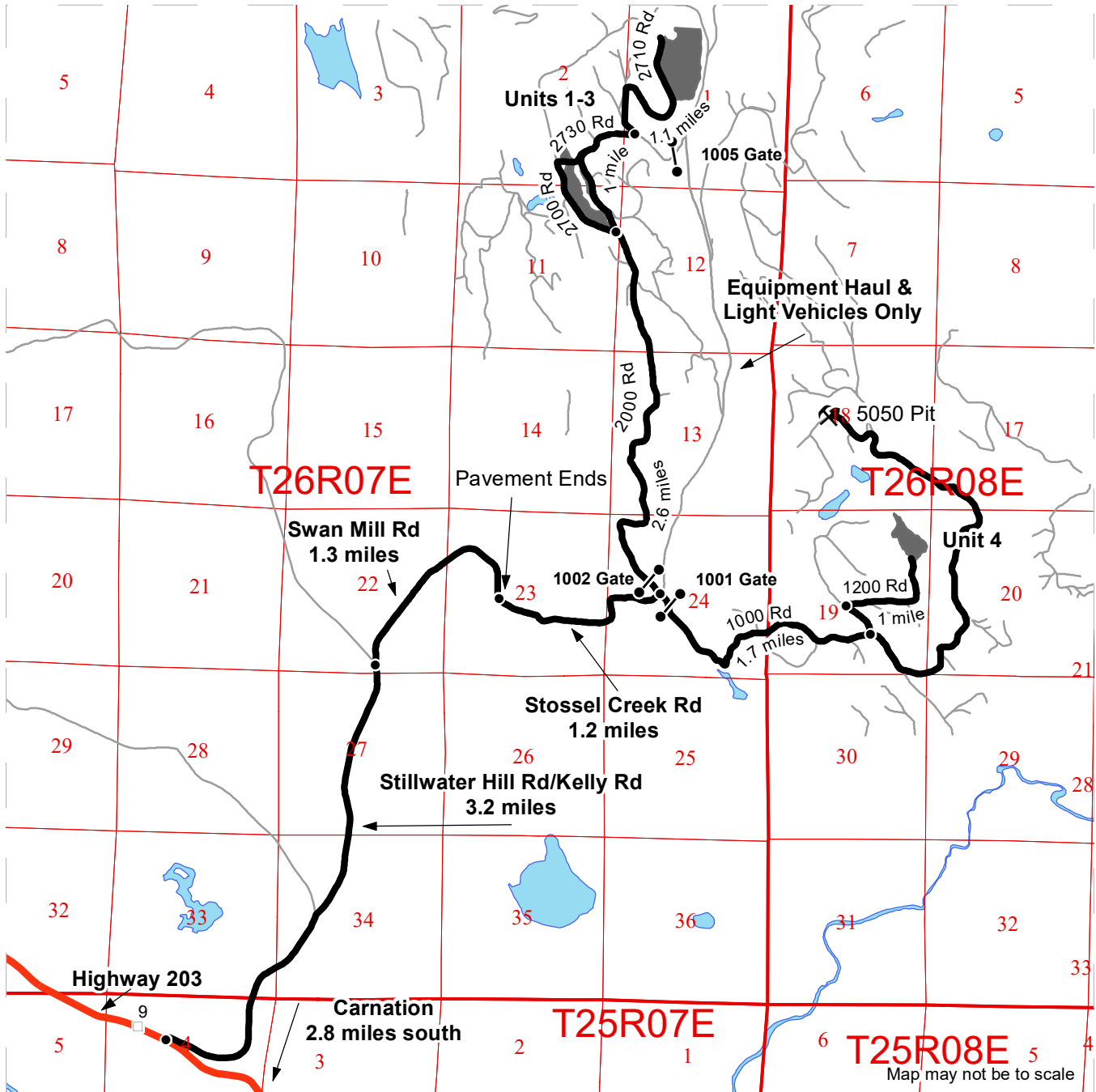
All State Unless Otherwise Noted



DRIVING MAP FROM CARNATION

SALE NAME: WISHBONE VRH
AGREEMENT#: 30-103629
TOWNSHIP(S): T26R7E, T26R8E
TRUST(S): Capitol Grant (7), State Forest Transfer (1)

REGION: South Puget Sound Region
COUNTY(S): King
ELEVATION RGE: 600-1320



- Timber Sale Unit
- Haul Route
- Other Road
- Distance Indicator
- 383 Gate (Master 383)
- X Rock Pit
- Milepost Markers
- Highway

DRIVING DIRECTIONS:

FROM CARNATION: Head north on Highway 203 for 2.8 miles and take a right onto Stillwater Hill Rd, which shortly turns into Kelly Rd NE. After 3.2 miles, veer right onto Swan Mill Rd, which then becomes Stossel Creek Rd. After 1.3 miles, keep right to stay on Stossel Creek Rd, entering Marckworth State Forest. Pavement ends here. After 1.2 miles, you will approach a 4-way intersection.

UNITS 1-3: Turn left at the 4-way onto the 2000 Rd and head through the 1002 gate (Master 383 key). Continue on the 2000 Rd for 2.6 miles before approaching Units 2 and 3. To continue to Unit 1, drive on the 2710 Rd for 1 mile, then turn left onto the 2710 Rd. Unit 1 will be on the right in approximately .6 miles.

UNIT 4: Turn right at the 4-way onto the 1000 Rd and head through the 1001 gate (Master 383 key). Continue on the 1000 Rd for 1.7 miles, then turn left onto the 1200 Rd and continue for 1 mile before coming to Unit 4.





TIMBER NOTICE OF SALE

SALE NAME: Q LECLERC HIGHWAY

AGREEMENT NO: 30-104204

AUCTION: July 25, 2023 starting at 10:00 a.m.,
Northeast Region Office, Colville, WA.

COUNTY: Pend Oreille

SALE LOCATION: Sale located approximately 8 miles north of Usk, WA.

**PRODUCTS SOLD
AND SALE AREA:**

All green conifer species except for leave trees banded with blue paint in Units 1, 2, 3 and 4 bounded by white timber sale boundary tags and all right of way timber banded with red paint.

All forest products above located on part(s) of Sections 20 all in Township 34 North, Range 44 East, W.M., containing 175 acres, more or less.

CERTIFICATION: This sale is certified under the Sustainable Forestry Initiative® program Standard (cert no: PwC-SFIFM-513)

ESTIMATED SALE VOLUMES AND QUALITY:

Species	Avg Ring DBH Count	Total MBF	MBF by Grade									
			P	SM	1S	2S	3S	4S	5S	6S	UT	
Douglas fir	16.7	1,914				963	815	136				
Grand fir	11.3	681			32	201	326	122				
Ponderosa pine	22.6	432							316	116		
Redcedar	23.8	283					280	3				
Larch	20.1	123				79	39	5				
Lodgepole	16.3	9				5	3	1				
Hemlock	22.4	8				6	2					
Sale Total		3,450										

MINIMUM BID: \$816,000.00

BID METHOD: Sealed Bids

PERFORMANCE

SECURITY: \$100,000.00

SALE TYPE: Lump Sum

EXPIRATION DATE: October 25, 2025

ALLOCATION: Export Restricted

BID DEPOSIT: \$81,600.00 or Bid Bond. Said deposit shall constitute an opening bid at the appraised price.

HARVEST METHOD: Track skidder, Rubber tired skidder, and Ground based equipment. Falling and Yarding will not be permitted from February 1 to April 15 unless authorized in writing by the Contract Administrator due to spring breakup.

ROADS: 9.60 stations of required construction. 31.22 stations of required reconstruction. 52.44 stations of required prehaul maintenance. Road construction will not be permitted from November 1 to June 1 unless authorized in writing by the Contract Administrator due to frozen conditions and spring breakup. The hauling of forest products will not be permitted from February 1 to April 15 unless authorized in writing by the Contract Administrator due to spring breakup.



TIMBER NOTICE OF SALE

ACREAGE DETERMINATION

CRUISE METHOD: Acreage determined using GPS methods. Acreage shown above is net harvest acres in harvest units. Ponderosa pine and western redcedar: 8.0 - 17.5 inches dbh has a minimum top of 4.6 inch dib. All other species: 7.0 - 17.5 inches dbh has minimum top of 4.6 inch dib. All species 17.6 inches and greater dbh have a minimum top dib of 40% of dob at 16 feet or a 6 inch top whichever is greater.

FEES: Purchaser is responsible for obtaining a road approach permit from Pend Oreille county. \$58,650.00 is due on day of sale. \$9.00 per MBF is due upon removal. These are in addition to the bid price.

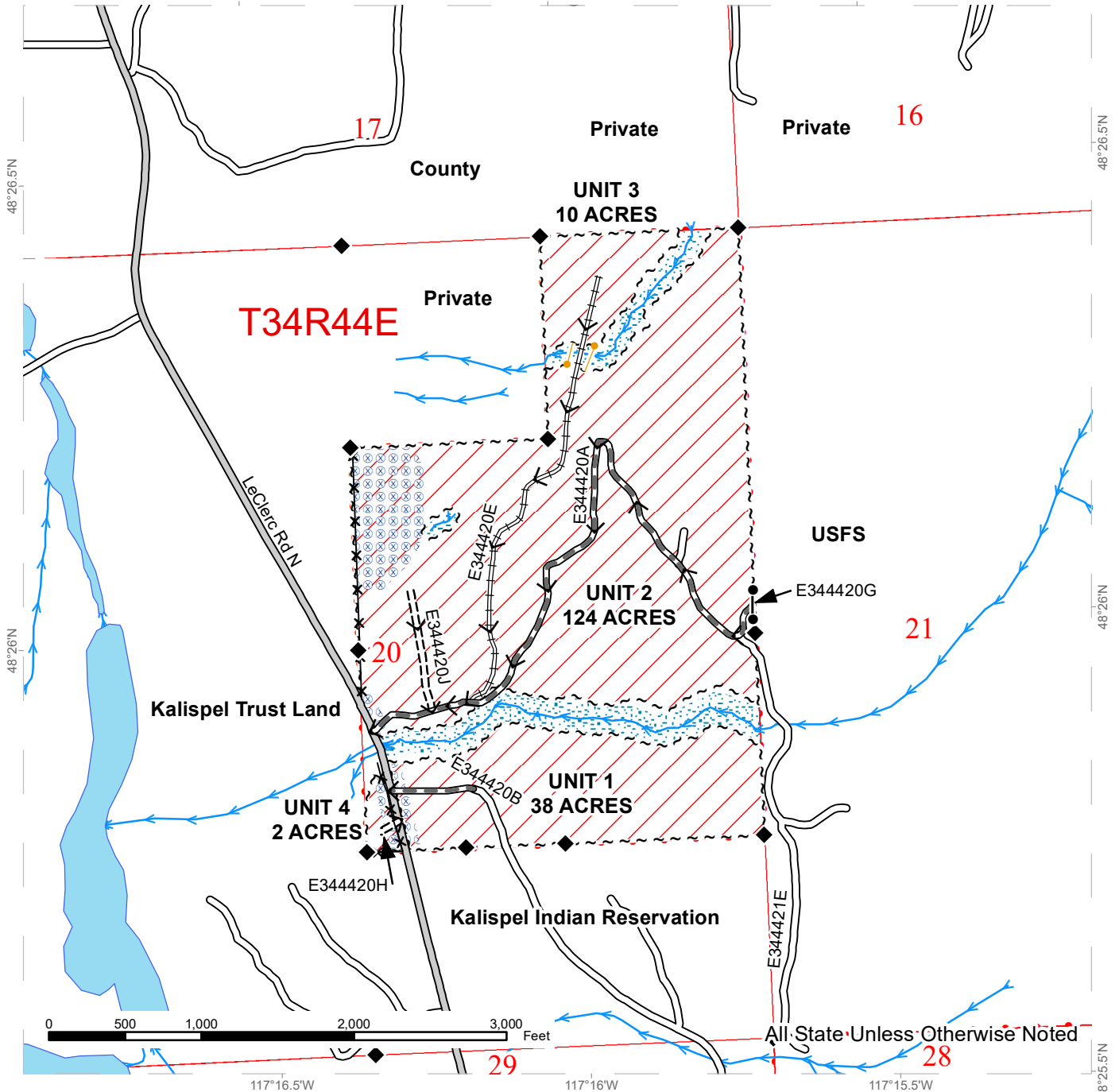
SPECIAL REMARKS: If operating during the pine beetle window from April 15 to June 30, logs must be hauled off site within 7 days unless authorized in writing by the Contract Administrator.

TIMBER SALE MAP

SALE NAME: Q LECLERC HWY
AGREEMENT #: 30-104204
TOWNSHIP(S): T34R44E
TRUST(S): Charitable/Educational/Penal & Reformatory Inst. (6)

REGION: Northeast Region
COUNTY(S): Pend Oreille
ELEVATION RGE: 2142-2680

117°16.5'W 117°16'W 117°15.5'W

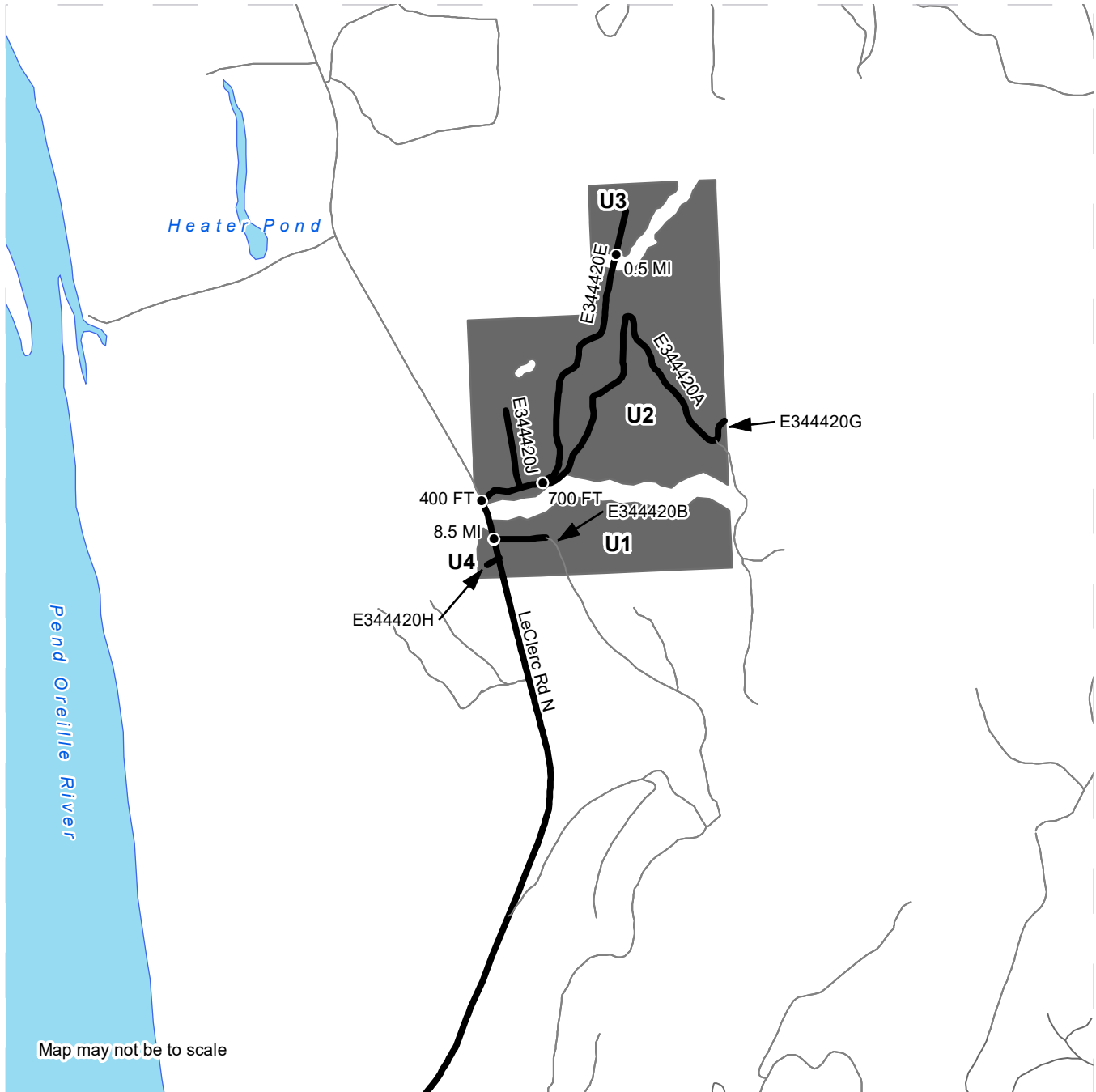


Public Land Survey Townships	Haul Route	Streams
DNR Managed Lands	County Road	Survey Monument
Variable Retention Harvest	Existing Roads	Gate
Sale Boundary Tags	Required Pre-Haul Maintenance	Fence
Take / Removal Trees = 1 Acre	Required Construction	
Riparian Mgt Zone	Required Reconstruction	
Hazard Abatement Area		

DRIVING MAP

SALE NAME: Q LECLERC HWY
AGREEMENT#: 30-104204
TOWNSHIP(S): T34R44E
TRUST(S): Charitable/Educational/Penal & Reformatory Instit. (6)

REGION: Northeast Region
COUNTY(S): Pend Oreille
ELEVATION RGE: 2142-2680



- Timber Sale Unit
- Haul Route
- Other Route
- Distance Indicator

DRIVING DIRECTIONS:

From Usk:

From Highway 20, travel northeast on Kings Lake Rd/5th St for 0.9 miles. After the bridge, turn left onto LeClerc Rd N. Stay on LeClerc Rd N for 8.5 miles. **To access Unit 1:** Off LeClerc Rd N, Unit 1 is to the east, accessible by the E344420B Rd. **To access Unit 2:** From the E344420B Rd and LeClerc Rd N intersection, travel north 400 feet and turn right on the E344420A Rd. **To access Unit 3:** Turn right onto E344420A Rd off of LeClerc Rd N. Travel 700 feet west. Take a left onto E344420E, travelling north for 0.5 miles. **To access Unit 4:** Unit 4 is on the west side of the LeClerc Rd N, opposite of the E344420B Rd.



DRIVING MAP

SALE NAME: Q LECLERC HWY
AGREEMENT#: 30-104204
TOWNSHIP(S): T34R44E
TRUST(S): Charitable/Educational/Peal & Reformatory Instit. (6)

REGION: Northeast Region
COUNTY(S): Pend Oreille
ELEVATION RGE: 2142-2680



Map may not be to scale

- Timber Sale Unit
- Haul Route
- Highway
- Distance Indicator
- ★ Town

DRIVING DIRECTIONS:

From Usk:

From Highway 20, travel northeast on Kings Lake Rd/5th St for 0.9 miles. After the bridge, turn left onto LeClerc Rd N. Stay on LeClerc Rd N for 8.5 miles. **To access Unit 1:** Off LeClerc Rd N, Unit 1 is to the east, accessible by the E344420B Rd. **To access Unit 2:** From the E344420B Rd and LeClerc Rd N intersection, travel north 400 feet and turn right on the E344420A Rd. **To access Unit 3:** Turn right onto E344420A Rd off of LeClerc Rd N. Travel 700 feet west. Take a left onto E344420E, travelling north for 0.5 miles. **To access Unit 4:** Unit 4 is on the west side of the LeClerc Rd N, opposite of the E344420B Rd.





TIMBER NOTICE OF SALE

SALE NAME: PRETENDER SWT

AGREEMENT NO: 30-104194

AUCTION: July 26, 2023 starting at 10:00 a.m., COUNTY: Skagit Northwest Region Office, Sedro Woolley, WA

SALE LOCATION: Sale located approximately 10 miles northeast of Darrington, WA.

PRODUCTS SOLD AND SALE AREA:

All timber as described for removal in schedule B, bounded by white timber sale boundary tags, adjacent young stands, and the WH-08, WH-0804, WH-0806, WH-15, SR-ML, SR-09 and SR-17 roads, except trees marked with blue paint on the bole and root collar in Unit #1.

All timber as described for removal in Schedule B located in the RMZ thinning areas (beyond the blue special management tags up to the white timber sale boundary tags) within Unit #1.

All timber bounded by orange right of way tags and all timber within 30 feet of centerline of roads to be constructed, except that title to the timber within the right of way tags is not conveyed to the Purchaser unless the road segment is actually constructed, except as described for removal in Schedule B.

All forest products above located on part(s) of Sections 8, 9, 10 and 16 all in Township 33 North, Range 10 East, W.M., containing 414 acres, more or less.

CERTIFICATION: This sale is certified under the Sustainable Forestry Initiative® program Standard (cert no: PwC-SFIFM-513)

ESTIMATED SALE VOLUMES AND QUALITY:

Table with columns: Species, Avg DBH, Ring Count, Total MBF, Total Tons, Price \$/Ton, and MBF by Grade (1P, 2P, 3P, SM, 1S, 2S, 3S, 4S, UT). Rows include Douglas fir, Hemlock, Redcedar, Cottonwood, and Sale Total.

MINIMUM BID: \$25.8/ton (est. value \$456,000.00) BID METHOD: Sealed Bids

PERFORMANCE SECURITY: \$91,200.00 SALE TYPE: Tonnage Scale

EXPIRATION DATE: March 31, 2026 ALLOCATION: Export Restricted

BIDDABLE SPECIES: Douglas fir

BID DEPOSIT: \$45,600.00 or Bid Bond. Said deposit shall constitute an opening bid at the appraised price.

HARVEST METHOD: Cable or tethered equipment (See below for restrictions); Shovel, tracked skidder, rubber-tired skidder or 6-wheeled-rubber-tired-skidders-with-over-the-tire-tracks-spanning-both-



TIMBER NOTICE OF SALE

sets-of-rear-tires (See below for restrictions) on sustained slopes 35% or less; self-leveling equipment on sustained slopes 50% or less (See below for restrictions).

Purchaser must obtain prior written approval from the Contract Administrator for areas as to where to utilize tethered, self-leveling or rubber-tired skidder equipment prior to use. If ground disturbance is causing excessive damage, as determined by the Contract Administrator, the equipment shall no longer be authorized. Falling and Yarding will not be permitted from November 1 to March 31 unless authorized in writing by the Contract Administrator (THIS PERTAINS TO GROUND-BASED EQUIPMENT ONLY) to reduce soil damage and erosion.

Additional restrictions apply, see Remarks section below.

ROADS:

25.15 stations of required construction. 56.70 stations of required reconstruction. 128.19 stations of optional construction. 475.63 stations of required prehaul maintenance.

Rock may be obtained from the following sources on State land at no charge to the Purchaser: White Creek Gravel Pit at station 3+05 of the WH-0802 Road. East White Creek Gravel Pit at station 79+47 of the WH-15 Road. Section 9 Gravel Pit at MP 1.7 of the SR-ML Road.

Development of existing rock sources will involve clearing and stripping to generate riprap and pit run gravel.

An estimated total quantity of rock needed for this proposal: 33 cubic yards of riprap and 7,788 cubic yards of pit run gravel.

Road work and the hauling of rock will not be permitted from November 1 to March 31 unless authorized in writing by the Contract Administrator to reduce soil damage and siltation. The hauling of forest products will not be permitted from November 1 to March 31 unless authorized in writing by the Contract Administrator to reduce soil damage and siltation.

ACREAGE DETERMINATION

CRUISE METHOD: Acres determined by GPS traverse. Cruise was conducted via variable plot sample type. See Cruise Narrative for further details. Shapefiles of units are available upon request, and on the DNR website after the BNR meeting in which the sale is presented.

FEES: \$50,303.00 is due on day of sale. \$1.09 per ton is due upon removal. These are in addition to the bid price.

SPECIAL REMARKS:

1. Cutting and yarding shall not be permitted during the bark slippage season unless authorized in writing by the Contract Administrator. This season is estimated to run from April 1 to July 15 but may vary depending on weather conditions. If permission is granted to operate during the bark slippage season the Purchaser shall be required to provide a plan outlining mitigation measures.
2. The Section 9 Gravel Pit is heavily used for recreational target shooting.

Schedule B
Thinning Prescription

Thinning Prescription: Unit 1

- Purchaser shall leave a residual stand that shall achieve the following evenly distributed across the sale area.

Average spacing of 19 feet x 19 feet

To accomplish this prescription, fallers shall harvest trees starting with smallest diameter trees working up to the larger trees (thin from below). The following take tree preference shall be followed to achieve the desired residual stand spacing:

- 1) all hardwoods
- 2) Western hemlock
- 3) defective, or diseased, Douglas-fir
- 4) smallest diameter Douglas-fir

- Examples of defect are trees with broken tops and little canopy, well developed spike knots, and highly sinuous forms should be prioritized for take.

- Where the prescription would leave an opening greater than 30 feet in diameter, the Purchaser must leave a conifer take tree from the largest diameter, largest crown class, best form, and undamaged.

- Western redcedar is not to be cut without prior approval of the Contract Administrator (CA). Only trees necessary to facilitate harvest operations or those which pose safety hazards shall be considered for approval.

Riparian Forest Restoration Strategy Trees

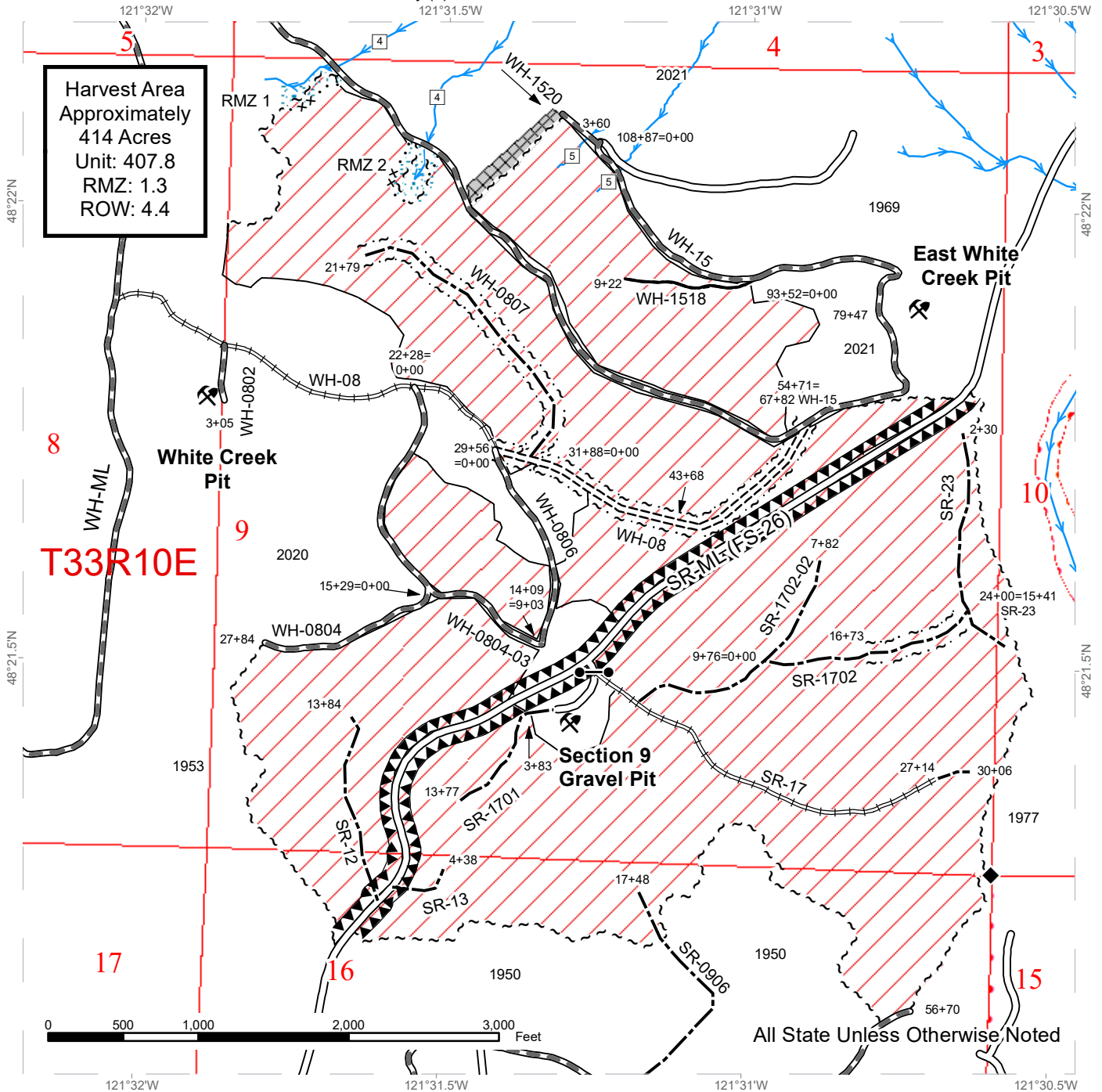
- RMZ's shall have an 8-13 inch diameter limit for cutting.
- Three enhancement conifer trees per thinned RMZ acre from the largest diameter class of thinned trees shall be felled toward streams and left as down woody debris.
- Two enhancement conifer trees per thinned RMZ acre from the largest diameter class of thinned trees shall be cut in a manner that facilitates snag creation and recruitment (girdled or topped).
- These enhancement trees are in addition to the residual stocking targets mentioned above, and should be distributed evenly throughout the RMZs.

RMZ Identifier	Net RMZ Acres	Number of Felled Trees	Number of Snag Creation Trees
RMZ 1	0.5	3	2
RMZ 2	0.8	3	2

TIMBER SALE MAP

SALE NAME: PRETENDER SWT
AGREEMENT #: 30-104194
TOWNSHIP(S): T33R10E
TRUST(S): Common School and Indemnity (3)

REGION: Northwest Region
COUNTY(S): Skagit
ELEVATION RGE: 520-680



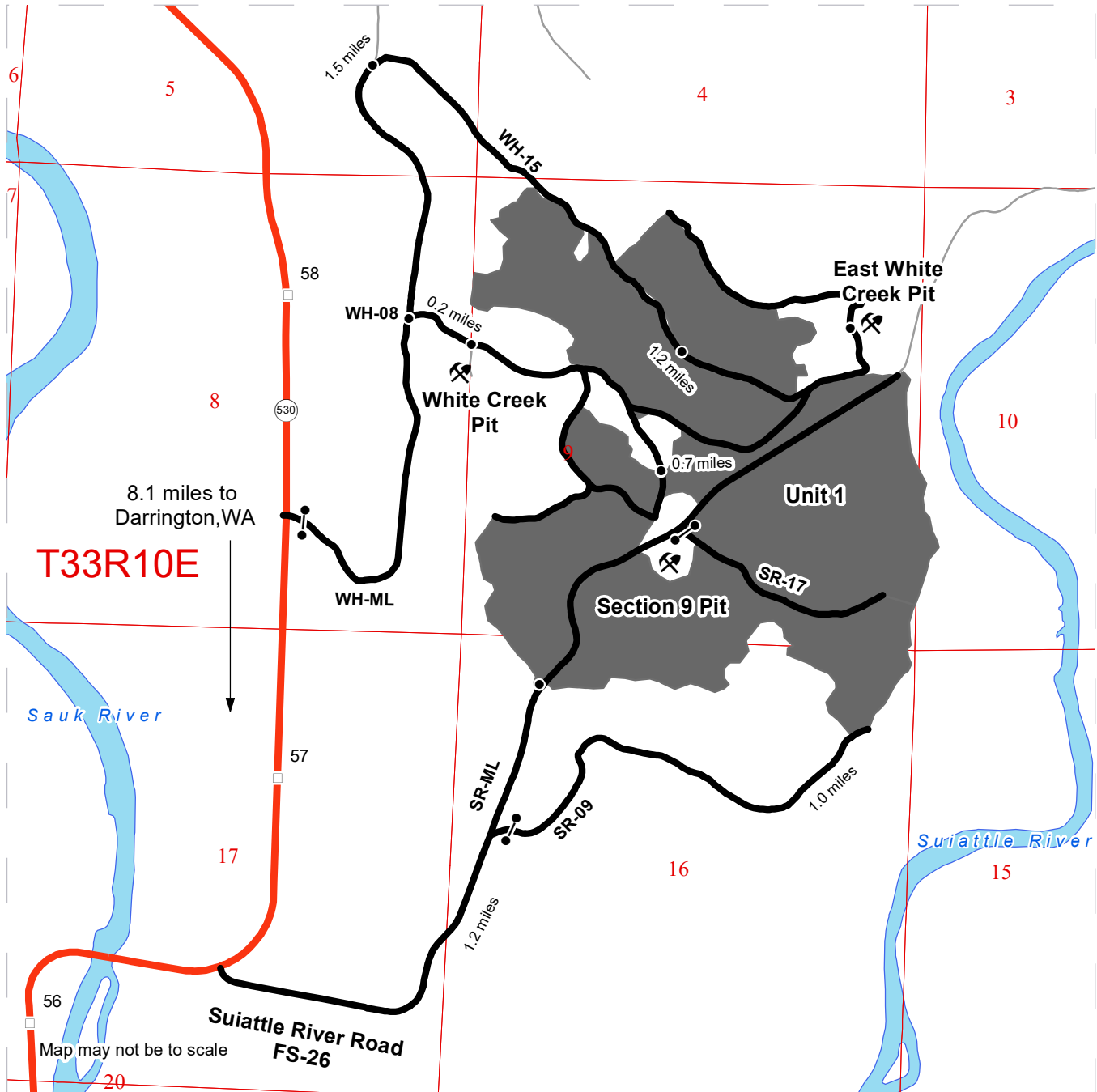
	Sale Area		Required Reconstruction		Riparian Mgt Zone
	Sale Boundary Tags		Optional Construction		Equipment Exclusion Zone
	Right of Way Tags		Streams		Hazard Abatement Area
	Property Line		Stream Type 4		Public Land Survey Townships
	Timber Type Change		Stream Type 5		Public Land Survey Sections
	Existing Roads		Gate (F1-3)		DNR Managed Lands
	Required Pre-Haul Maintenance		Rock Pit		
	Required Construction		Survey Monument		



DRIVING MAP

SALE NAME: PRETENDER SWT
AGREEMENT#: 30-104194
TOWNSHIP(S): T33R10E
TRUST(S): Common School and Indemnity (3)

REGION: Northwest Region
COUNTY(S): Skagit
ELEVATION RGE: 520-680



- Timber Sale Unit
- Haul Route
- Other Road
- Highway
- Milepost Markers
- Distance Indicator
- Gate (F 1-3)
- 530 Highway 530
- ⚡ Rock Pit

DRIVING DIRECTIONS:

From Darrington, travel 8.1 miles north on SR 530 to WH-ML. To get to the upper sale area, travel 1.5 miles on the WH-ML. Staying east at the junction, travel another 1.2 miles on the WH-15 to the sale area.
 From the WH-08, travel 0.7 miles to the sale area
 From Suiattle River Road (FS-26), travel 1.2 miles to the sale area.
 White Creek Pit: From the WH-ML, travel 0.9 miles to the WH-08. Turn right and continue for 0.2 miles to the WH-0802. Continue for 400 ft. to the pit.
 East White Creek Pit: From the WH-ML, travel 1.5 miles to the junction. Stay east and continue on for 1.5 miles to the pit.
 Section 9 Pit: From Suiattle River Road, travel 1.7 miles to the gate off the SR-17. Drive through the gate to the pit.





TIMBER NOTICE OF SALE

SALE NAME: TCB 23

AGREEMENT NO: 30-103864

AUCTION: July 26, 2023 starting at 10:00 a.m., Olympic Region Office, Forks, WA

COUNTY: Clallam

SALE LOCATION: Sale located approximately 11 miles southwest of Port Angeles, WA

PRODUCTS SOLD AND SALE AREA:

All timber, except madrone, trees marked with a band of blue paint, or bounded out by leave tree area tags; bounded by timber sale boundary tags, red painted take trees, PA-I-1405 Road and the PA-I-1405.1 Road in Unit 1; timber type change and the PA-I-1000 Road in Unit 2.

All forest products above located on part(s) of Sections 20 and 21 all in Township 30 North, Range 7 West, W.M., containing 46 acres, more or less.

CERTIFICATION: This sale is certified under the Sustainable Forestry Initiative® program Standard (cert no: PwC-SFIFM-513)

ESTIMATED SALE VOLUMES AND QUALITY:

Table with columns: Species, Avg Ring DBH, Ring Count, Total MBF, and MBF by Grade (1P, 2P, 3P, SM, 1S, 2S, 3S, 4S, UT). Rows include Douglas fir, Grand fir, Redcedar, Red alder, Hemlock, Maple, Cottonwood, and Sale Total.

MINIMUM BID: \$227,000.00

BID METHOD: Sealed Bids

PERFORMANCE SECURITY:

\$45,400.00

SALE TYPE: Lump Sum

EXPIRATION DATE: December 31, 2024

ALLOCATION: Export Restricted

BID DEPOSIT: \$22,700.00 or Bid Bond. Said deposit shall constitute an opening bid at the appraised price.

HARVEST METHOD: 100% ground. Forest products sold under this contract shall be harvested and removed using cable, cable-tethered, and ground based equipment. Cable-tethered equipment is limited to sustained slopes of 75 percent and less. Non-tethered self-leveling tracked equipment is limited to sustained slopes of 65 percent and less. Other ground based equipment is limited to tracked equipment on sustained slopes that are 45 percent and less. Rubber tired skidders are restricted unless approved by the Contract Administrator.

No activity from January 1 through July 31, or on weekends or State recognized holidays.



TIMBER NOTICE OF SALE

Ground Based Yarding will also not be permitted from November 1 to December 31 unless authorized in writing by the Contract Administrator in Unit 1. Timber haul is also not allowed from 8:00pm to 5:00am.

ROADS:

18.45 stations of required reconstruction. 185.40 stations of required pre-haul maintenance. No road activities, including timber haul and rock pit development will be allowed from January 1 to July 31, or on weekends, State recognized holidays, or from 8:00pm to 6:00am. Pre-haul maintenance, reconstruction, timber haul and rock haul, road construction will not be permitted unless authorized in writing by the Contract Administrator.

On the PA-I-1000 Road (85+00 to 91+00), timber felling, road work or operation of heavy equipment performed during the marbled murrelet nesting season (April 1 through September 23), is restricted to, two hours after sunrise to two hours before sunset. This does not apply to hauling timber, rock or equipment.

ACREAGE DETERMINATION

CRUISE METHOD: Sale acreage was 100% GPS'd. Sale units were cruised using a variable plot sample

FEES: \$17,816.00 is due on day of sale. \$9.00 per MBF is due upon removal. These are in addition to the bid price.

SPECIAL REMARKS: There is a locked gate on the PA-I-1000 Road. Contact the Olympic Region Dispatch Center at 360-374-2811, to obtain a AA-1 key.

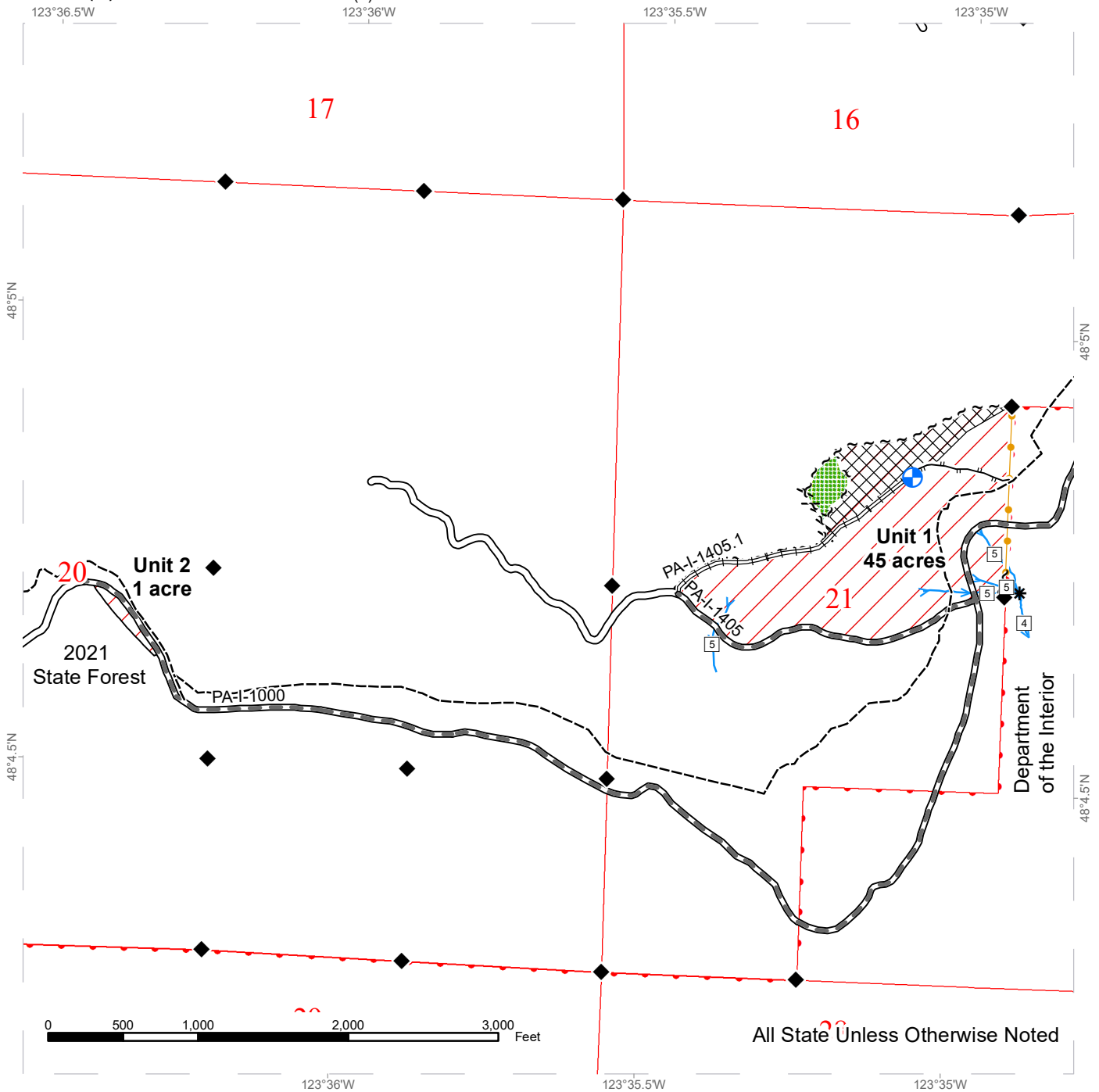
The younger timber in Unit 1 makes up 12.2 acres of the sale. The original Unit 1 and Unit 4 were combined after the cruise was done.

All trees 60 inches in Diameter at Breast Height (DBH) and greater shall not be felled unless for safety reasons, which must be approved by the Contract Administrator. If trees 60 inches in DBH or greater need to be felled for safety reasons, trees will be left where felled.

TIMBER SALE MAP

SALE NAME: TCB 23
AGREEMENT #: 30-103864
TOWNSHIP(S): T30R7W
TRUST(S): State Forest Transfer (1)

REGION: Olympic Region
COUNTY(S): Clallam
ELEVATION RGE: 480-1080'

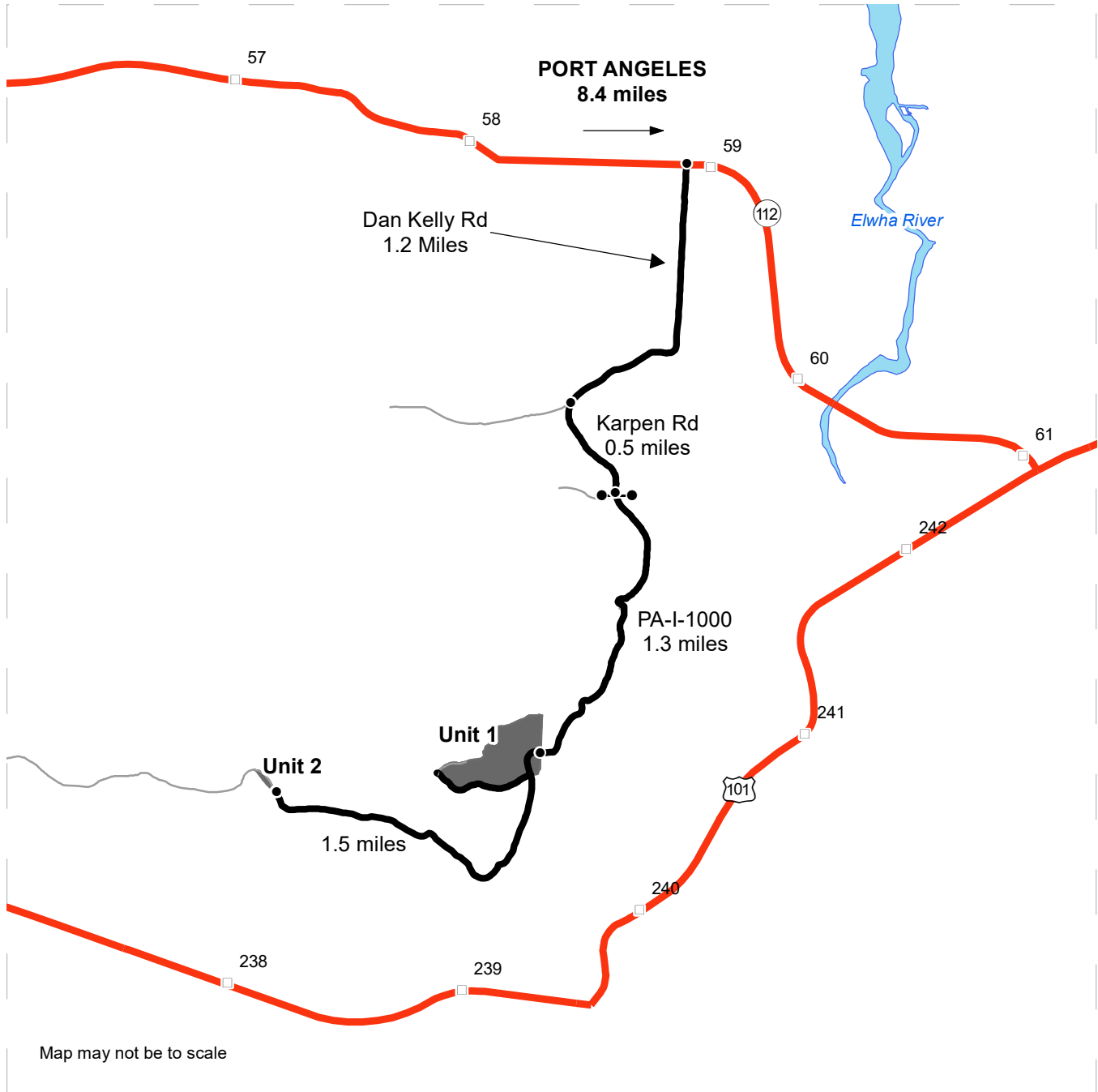


	Variable Retention Harvest		Sale Boundary Tags		Existing Roads		Streams
	DNR Managed Lands		Leave Tree Tags		Required Pre-Haul Maintenance		Stream Type
	Riparian Management Zone		Right of Way Tags		Required Reconstruction		Stream Type Break
	Leave Tree Area		Take / Removal Trees		Designated Skid Trail		Survey Monument
	Slash Piling Area		Flag Line		Recreation Trail		Landing - Proposed
			Timber Type Change				

DRIVING MAP

SALE NAME: TCB 23
AGREEMENT#: 30-103864
TOWNSHIP(S): T30R7W
TRUST(S): State Forest Transfer (1)

REGION: Olympic Region
COUNTY(S): Clallam
ELEVATION RGE: 480-1080'



	Timber Sale Unit	<p>Unit 1: From Port Angeles head west on US 101 for 6.2 miles, then turn north on Highway 112. Continue on Highway 112 for 2.2 miles until reaching Dan Kelly Road. Head South on Dan Kelly Road for 1.2 miles then, turn left onto Karpen Road and continue for 0.5 miles. Turn left onto the PA-I-1000 and proceed through the locked gate. Continue for 1.3 miles before reaching unit 1</p> <p>Unit 2: From Unit 1, continue on the PA-I-1000 for 0.5 Miles to arrive at Unit 2. Unit is located directly south of the PA-I-1000.</p>
	Waterbodies	
	Highway	
	Haul Route	
	Other Road	
	Milepost Markers	
	Distance Indicator	
	Gate (AA-1)	





TIMBER NOTICE OF SALE

SALE NAME: *TWAYBLADE Thin VRH*

AGREEMENT NO: 30-94599

AUCTION: July 26, 2023 starting at 10:00 a.m., **COUNTY:** Whatcom
Northwest Region Office, Sedro Woolley, WA

SALE LOCATION: Sale located approximately 1 miles southwest of Acme, WA.

**PRODUCTS SOLD
AND SALE AREA:**

All timber as described for removal in Schedule B bounded by white timber sale boundary tags, blue special management tags, and existing roads (CC-1414 and CC-1418 roads) in Unit #1.

All timber bounded by adjacent young stands located beyond the blue special management tags (up to the adjacent young stands edge), except cedar salvage (cedar snags, preexisting dead and down cedar trees and cedar logs), trees marked with blue paint on the bole and root collar, and forest products tagged out by yellow leave tree area tags within Unit #2.

All timber bounded by orange right-of-way tags, except that title to the timber within the right-of-way associated with areas of road construction is not conveyed to the Purchaser unless the road segment is actually constructed.

All forest products above located on part(s) of Sections 7 and 18 all in Township 37 North, Range 5 East, Sections 12 and 13 all in Township 37 North, Range 4 East, W.M., containing 178 acres, more or less.

CERTIFICATION: This sale is certified under the Sustainable Forestry Initiative® program Standard (cert no: PwC-SFIFM-513)

ESTIMATED SALE VOLUMES AND QUALITY:

Species	Avg DBH	Ring Count	Total MBF	Total Tons	Price \$/Ton	MBF by Grade								
						1P	2P	3P	SM	1S	2S	3S	4S	UT
Douglas fir	14.3	5	1,086	8,673	\$10.80				9		46	806	200	25
Hemlock	13.5		497	4,370	\$4.00						47	355	87	8
Redcedar	16.1		31	260	\$88.00							28	3	
Red alder	11		26	227	\$2.00							1	21	4
Sale Total			1,640	13,530										

MINIMUM BID: \$10.8/ton (est. value \$134,000.00) **BID METHOD:** Sealed Bids

PERFORMANCE SECURITY: \$26,800.00 **SALE TYPE:** Tonnage Scale

EXPIRATION DATE: March 31, 2026 **ALLOCATION:** Export Restricted

BIDDABLE SPECIES: Douglas fir

BID DEPOSIT: \$13,400.00 or Bid Bond. Said deposit shall constitute an opening bid at the appraised price.



TIMBER NOTICE OF SALE

HARVEST METHOD: Shovel (Unit #2 only), tracked forwarder, tracked skidder; also, a feller-buncher or processor may be utilized (See below for restrictions).

Purchaser must obtain prior written approval from the Contract Administrator for areas as to where to utilize feller-buncher or processor equipment prior to use in Unit #1. Equipment size must be operable within the corridor width limitations as defined in H-015 Skid Trail Requirements. If the equipment is causing excessive damage to resources, as determined by the Contract Administrator, the equipment will no longer be authorized for use. Falling and Yarding will not be permitted from November 1 to March 31 unless authorized in writing by the Contract Administrator (THIS PERTAINS TO GROUND-BASED EQUIPMENT ONLY) to reduce soil damage and erosion.

ROADS: 9.15 stations of required construction. 442.00 stations of required prehaul maintenance. 9.15 stations of abandonment.

Rock may be obtained from the following source(s) on State land at no charge to the Purchaser: Christie Pit at station 181+35 of the CT-ML Road.

Development of an existing rock source will involve drilling, shooting, and processing rock to generate riprap, 2-inch minus crushed rock, and 3-inch-minus ballast rock.

An estimated total quantity of rock needed for this proposal: 65 cubic yards of riprap, 2,525 cubic yards of 2-inch minus crushed rock, and 485 cubic yards of 3-inch-minus ballast rock.

Additional restrictions apply, see Remarks section below.

Road work and the hauling of rock will not be permitted from November 1 to March 31 unless authorized in writing by the Contract Administrator to reduce soil damage and siltation. The hauling of forest products will not be permitted from November 1 to March 31 unless authorized in writing by the Contract Administrator to reduce soil damage and siltation.

ACREAGE DETERMINATION

CRUISE METHOD: Acres determined by GPS traverse for units and length x width calculation for right-of-way. Cruise was conducted via variable plot sample type. Cruise acres are based on FMA (Forest Management Activity) acres including leave tree areas. Leave tree volume is not included in the cruise. See Cruise Narrative for further details. Shapefiles of units are available upon request, and on the DNR website after the BNR meeting in which the sale is presented.

FEES: \$27,880.00 is due on day of sale. \$1.08 per ton is due upon removal. These are in addition to the bid price.

SPECIAL REMARKS:

1. The thinning portion of this timber sale was designed for cut to length harvest systems. Harvest and yarding equipment that cannot comply with the skid trail width specified in the contract will not be approved to operate in the thinning areas.
2. 100% ground-based yarding is anticipated.
3. Outer boundary of harvest area in VRH area is demarcated with blue special management tags within the sale area.
4. HQ DF noted within Unit 2. See cruise for further details.

Twayblade Schedule B
Agreement# 30-094599
Prepared by Kyle Galloway

Harvesting from the smallest diameter class first, achieve a residual stand with approximately 100 evenly spaced trees (21' x 21') per acre in Compartment A and 130 evenly spaced trees (19' x 19') per acre in Compartment B. See Schedule B Addendum Map for compartment locations.

In order of preference, take tree species should be prioritized as 1) red alder, 2) western hemlock, and 3) Douglas-fir. Trees with broken tops and little canopy, well developed spike knots, and highly sinuous forms should be prioritized for take.

Other requirements:

When operating along RMZs, the department is required to place a specific number of the largest designated take trees towards the buffered creek to serve as downed woody debris (DWD) recruitment. Requirements are as follows:

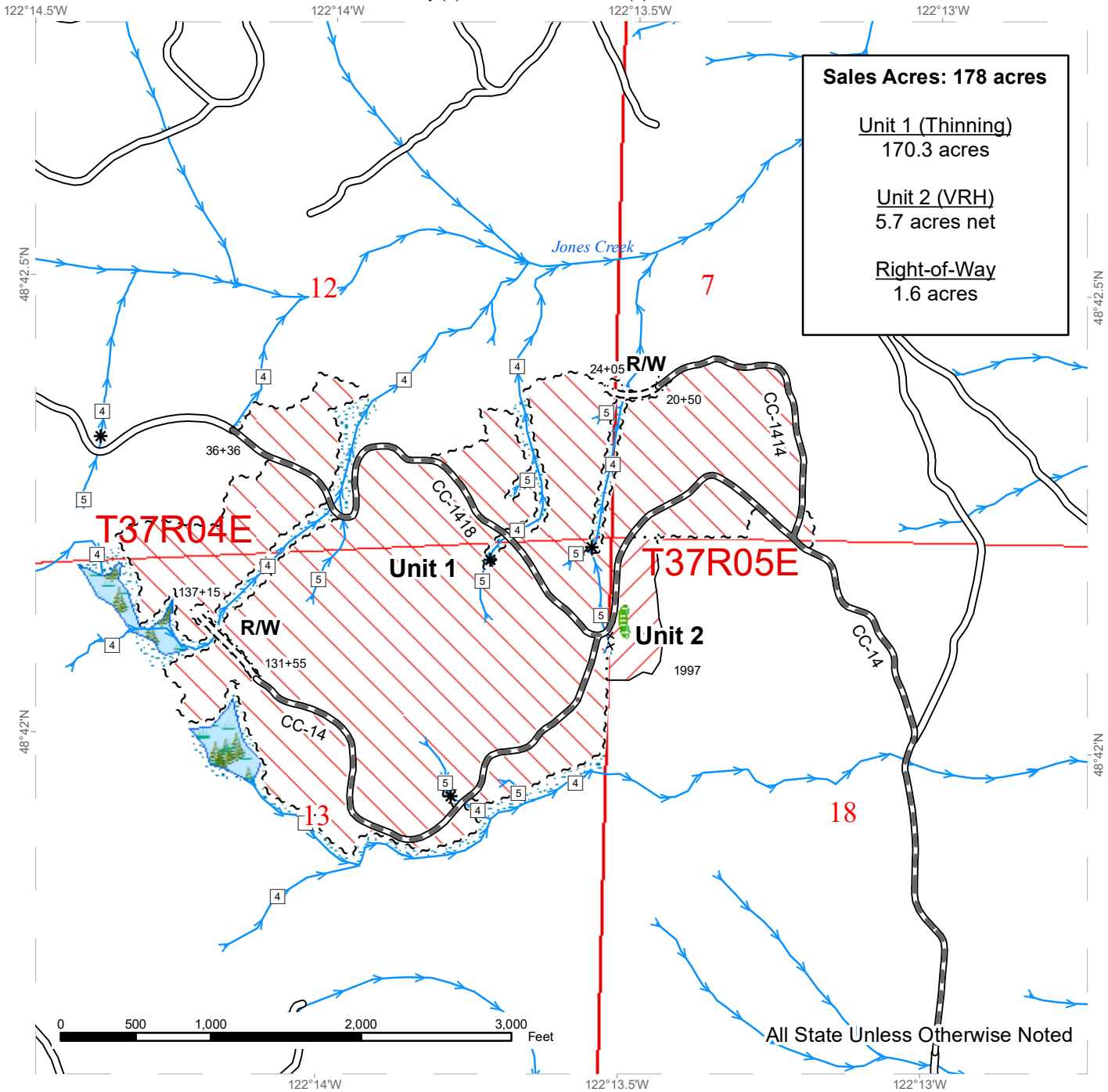
- Operator shall select one tree every 100-130 feet to be felled into the creek for DWD.
- Selected trees shall be from the largest diameter class of the designated take trees.
- DWD recruit trees shall be selected from within 25' of the timber sale boundary tags.
- The DWD recruit trees shall be marked with orange (or other bright color as agreed to by the CA) paint on the butt and paint shall be visible from the interior of the sale.

See the attached "Schedule B Addendum Map" for specific locations for the DWD recruitment areas and total number of DWD recruits required for each section of stream.

TIMBER SALE MAP

SALE NAME: TWAYBLADE
AGREEMENT #: 30-094599
TOWNSHIP(S): T37R4E, T37R5E
TRUST(S): Common School and Indemnity (3), State Forest Transfer (1)

REGION: Northwest Region
COUNTY(S): Whatcom
ELEVATION RGE: 1564-2199



Sales Acres: 178 acres

- Unit 1 (Thinning)
170.3 acres
- Unit 2 (VRH)
5.7 acres net
- Right-of-Way
1.6 acres

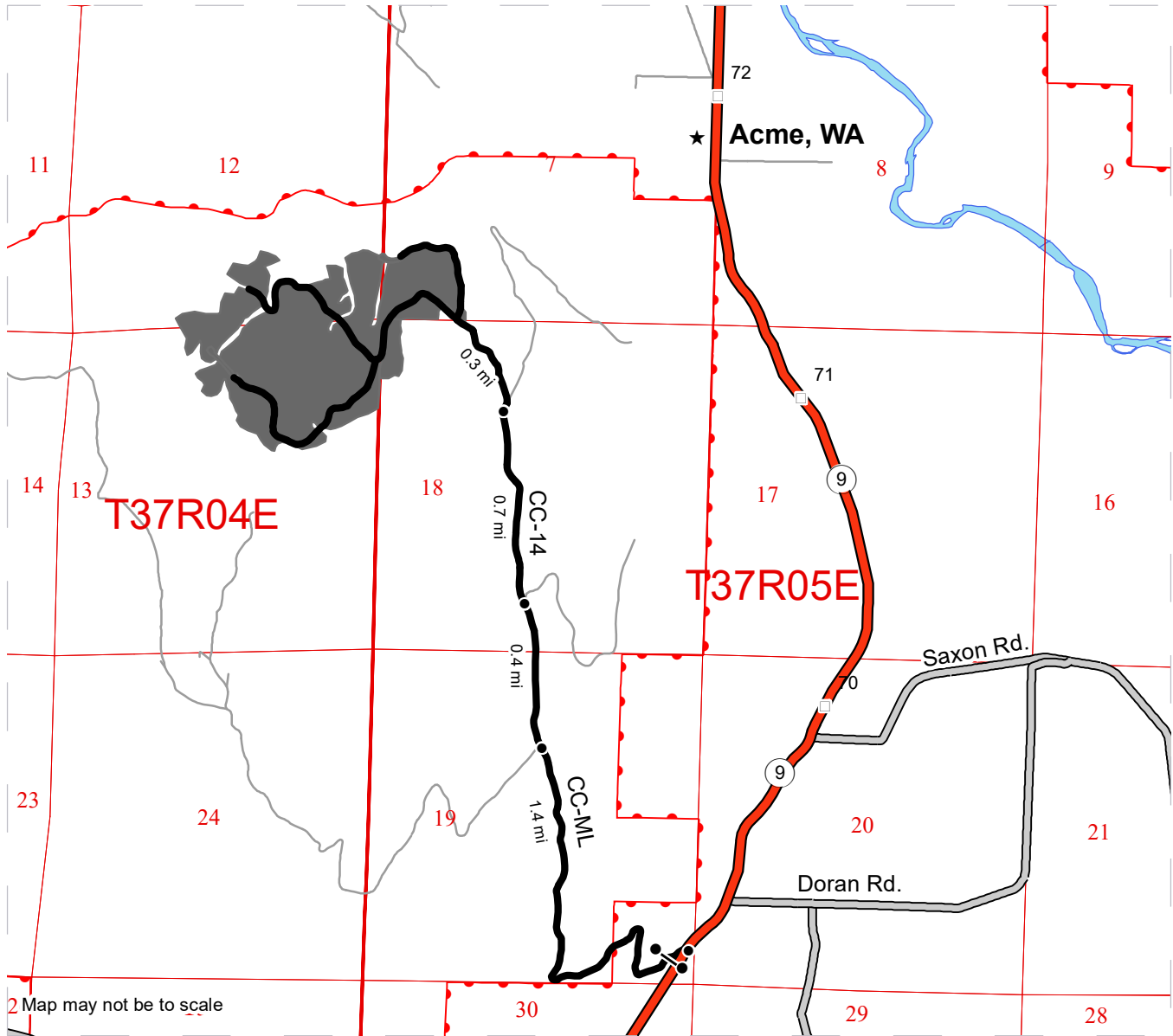
Variable Retention Harvest	Sale Boundary Tags	Streams
Thinning	Timber Type Change	Stream Type
Leave Tree Area	Special Mgmt Area	Stream Type Break
Riparian Mgt Zone	Right of Way Tags - Single	
Forested Wetland	Existing Roads	
	Required Pre-Haul Maintenance	
	Required Construction	



DRIVING MAP

SALE NAME: TWAYBLADE THIN VRH
AGREEMENT#: 30-094599
TOWNSHIP(S): T37R4E, T37R5E
TRUST(S): Common School and Indemnity (3), State Forest Transfer (1)

REGION: Northwest Region
COUNTY(S): Whatcom
ELEVATION RGE: 1564-2199



2 Map may not be to scale

- Timber Sale Unit
- Haul Route
- Other Road
- County Road
- Highway
- Milepost Markers
- State Land
- Distance Indicator
- Gate (F1-3)
- Town

DRIVING DIRECTIONS:

To Harvest Unit:

From the intersection of Park Rd. and SR-9, head north on SR-9 for 1.2 miles and turn west onto the CC-ML. Go through the gate (accessible with an F1-3 key) and continue for 1.4 miles. At the intersection continue north (straight). The road now becomes the CC-14. Continue north on the CC-14 for 1.4 miles until you reach the harvest unit.

To Christie Hard Rock Pit: (not mapped)

From the intersection of Park Rd. and SR9, head north on SR-9 for 1.4 miles and turn east onto Doran Rd. Continue for 0.25 miles and turn south onto Innis Creek Rd. Travel 0.7 miles and turn east onto the CT-ML. Proceed through the gate (accessible with an F1-3) and continue on the CT-ML for 3.5 miles to the rock pit.



**State of Washington
Department of Natural Resources**

SEALED BID FORM

Sale Name _____ Agreement Number _____

_____ hereby submits the following bid for timber.
(Print full, legal company name)

(Street address, City, State, Zip Code)

(Phone Number)

Lump Sum Bid (Not Including Fees) \$ _____ **For Total Sale**

Weight Scale Sale Bid (Not Including Fees) \$ _____ / **Ton**

Scribner Scale Sale Bid (Not Including Fees) \$ _____ / **MBF For Biddable Species**

BID DEPOSIT

Bid Deposit Amount: \$ _____

Bid Deposit Type:

- Cash, certified check, cashiers check, or money order
 Per Sale Bid Bond
 Statewide Bid Bond, Number _____

Within 30 days of confirmation date the successful bidder agrees to furnish Performance Security acceptable to the State in the amount specified on the Notice of Sale. Performance Security must guarantee performance of all provisions of the contract and payment of any damages caused by operations under the contract or resulting from the successful bidders noncompliance with any rule or law.

Bidder's Warranty and Bid Signature

By signing and submitting this bid as an offer to purchase forest products from the State, the Bidder hereby warrants to the State that they have had an opportunity to fully inspect the sale area and the forest products being sold. Bidder further warrants to the State that they enter this bid based upon their own judgments of the value of the forest products, formed after their own examination and inspection of both the timber sale area and the forest products being sold. Bidder also warrants to the State that they enter this bid without any reliance upon the volume estimates, acreage, appraisals, pre-bid documentation, or any other representation by the Washington State Department of Natural Resources.

_____ Date _____
(Signature of Authorized Representative submitting this bid)

(Print name and title of Authorized Representative submitting this bid)

Note: all sales are subject to confirmation by the Commissioner of Public Lands (Refer 79.15.120)

Instructions For Completing Sealed Bid Form

All bids submitted for the purchase of forest products being sold by the Washington State Department of Natural Resources must have an original signature on behalf of the person or entity submitting the bid, and must be on the form provided in this booklet or a photocopy thereof. The DNR will not accept bids that are not signed, and will not accept bids that are not on the current, approved bid form. All appropriate blanks on bid form must be completed including the bid bond number if the bidder is relying upon a bid bond for bid deposit.

For more specific information, contact the appropriate region office.

In-Person Bids

- A. Sealed bids must be in auction box before 10:00 a.m. on the day of auction at the location specified in the Timber Notice of Sale.
 - B. Sealed bids must be submitted in an envelope with the name of the sale, the bidder's name and the contract number clearly written on the outside of the envelope. The full legal name and business address of the bidder must be inserted where indicated on the form, and must be on the bid bond and timber sale contract. The bid form must be signed by an authorized representative. When a bidder has more than one person authorized to bid, documentation of those persons with signature authority for bidding must accompany the bid or be on file at the region office. Sealed bid envelopes are available at all region offices. One bid per envelope.
 - C. Sealed bid envelopes **must** contain a completed bid form and a bid deposit.
 - D. Sealed bid envelopes **may** contain a check for the Initial Deposit amount and a check for fees.
-

Mailed Bids

- A. Bids that are mailed are required to have printed on the outside: "DO NOT OPEN UNTIL SALE DATE. SEALED BID ENCLOSED". The sealed bid envelope(s) will be enclosed inside the mailed-in envelope. Mailed bids must be submitted in an envelope with the name of the sale, the bidder's name and the agreement number clearly written on the outside of the envelope. The full legal name and business address of the bidder must be inserted where indicated on the form, and must be the same on the bid bond and timber sale contract. The Sealed Bid Form must be signed by an authorized representative. When a bidder has more than one person authorized to bid, documentation of those persons with signature authority for bidding must accompany the bid or be on file at the region office. Mail-in envelopes are available at all region offices. One bid per mailed-in envelope.
 - B. Bids that are mailed will be accepted up to 4:30 p.m. the last business day before the auction by the region office in which the sale is located. Bidders assume the risk for the method of delivery. The DNR assumes no responsibility for any delays caused by any delivery service.
 - C. Sealed bid envelopes **must** contain a completed bid form and a bid deposit.
 - D. Sealed bid envelopes **may** contain a check for the Initial Deposit amount and a check for fees.
-

Initial Deposit:

Lump Sum Sales - Initial Deposit must equal 10% of the total bid submitted.
(25% if the bidder is a defaulter as defined under WAC 332-140-300)

Weight Scale Sales - Initial Deposit must equal 10% of the bid per ton multiplied by the total sale estimated tonnage. (25% if the bidder is a defaulter as defined under WAC 332-140-300)

Scribner MBF Scale Sales - Initial Deposit must equal 10% of the bid per MBF multiplied by the total sale MBF. (25% if the bidder is a defaulter as defined under WAC 332-140-300)

**State of Washington
Department of Natural resources**

STATEWIDE BID BOND

Bond Number _____

_____ of _____,
(Principal's Name) (City, State)

hereinafter called PRINCIPAL, and _____ hereinafter called
SURETY,

a corporation organized under the laws of the State of _____, and authorized to transact surety business in the State of Washington, as SURETY, are held and firmly bound jointly and severally to the State of Washington, Department of Natural Resources, hereinafter called the STATE, in the sum of \$150,000.00 Dollars, lawful money of the United States of America. The PRINCIPAL binds itself, its heirs, executors, administrators, successors, and assigns, and the SURETY binds itself, its successors, and assigns, all jointly and severally.

This bond shall be governed by the laws of the State of Washington. In the event of a lawsuit involving this bond, a venue shall be proper only in Thurston County Superior Court.

Signed, sealed and dated this _____ day of _____, _____ .
(month) (year)

This statewide bid bond may be used for bidding between the following dates:

Starting:

Ending:

It Is Hereby Understood and Agreed:

If PRINCIPAL is an apparent high bidder, PRINCIPAL shall before 4:30 p.m ., on day of sale, pay to the STATE the amount of the initial deposit in the form of a certified check, cashier's check, bank draft, cash or money order, then this agreement shall be void for the sale on which the payment is made; otherwise, it will remain in force.

SURETY will make payment to the STATE within ten days after demand by the STATE if the PRINCIPAL shall fail to make timely payment as described above.

The SURETY may cancel this bond by sending a written notice to the STATE, not less than forty-five days before a cancellation date; liability shall terminate as to acts or omissions of the PRINCIPAL that occur after the cancellation date.

The PRINCIPAL and the SURETY executed this bond on the date first mentioned.

Principal: (Above named)

Signature: _____

Name: _____

Title: _____

Address: _____

City: _____
State & Zip Code

Surety: (Above named)

Signature: _____

Name: _____

Title: _____

Address: _____

City: _____
State & Zip Code

Surety: (Local Office of Authorized agent)

Signature: _____

Name: _____

Title: _____

Address: _____

City: _____
State & Zip Code

Notary or Company Seal in Space Above

Instructions for Completing Timber Sale Statewide Bid Bond

- A. This form is authorized for use as bid guaranty to qualify for bidding on Washington State Department of Natural Resources timber sales.
- B. The Statewide Bid Bond may be used as bid guaranty on more than one timber sale.
- C. The full legal name and business address of the PRINCIPAL must be inserted where indicated and must be the same as will appear on the bidding record and timber sale contract. The bond must be signed by an authorized person. Additionally, the name must be typed or printed below the signature and title must be shown.
- D. The full legal name and business address of the SURETY must be inserted where indicated. The bond must be signed by an authorized person. Additionally, the name must be typed or printed below the signature and the title must be shown.
- E. If the SURETY does not have a Washington State office or resident agent, but is authorized to transact surety business in the State of Washington as SURETY, it may leave this signature block blank.
- F. This form must be received by the Department of Natural Resources, Product Sales & Leasing Division, PO BOX 47016, Olympia, Washington, 98504-7016, ten days in advance of the auction.
- G. **The State reserves the right to reject *incomplete or incorrect* bid bond forms, making such forms unacceptable as bid guaranty.**

**State of Washington
Department of Natural Resources**

Timber Sale Per Sale Bid Bond

Bond Number _____

_____ of _____, hereinafter called PRINCIPAL, and _____, hereinafter called SURETY, a corporation organized under the laws of the State of _____ and authorized to transact surety business in the State of Washington, as SURETY, are held and firmly bound jointly and severally to the State of Washington, Department of Natural Resources, hereinafter called the STATE, in the sum of \$ _____ Dollars, lawful money of the United States of America. The PRINCIPAL binds itself, its heirs, executors, administrators, successors, and assigns, and the SURETY binds itself, its successors, and assigns, all jointly and severally.

This bond shall be governed by the laws of the State of Washington. In the event of a lawsuit involving this bond, venue shall be proper only in Thurston County Superior Court.

Signed, sealed, and dated this _____ day of _____, 20 _____.

BID IDENTIFICATION:

SALES NAME(S)	REQUIRED DEPOSIT	AGREEMENT NUMBER(S)

DATE OF BID: _____

It Is Hereby Understood and Agreed:

If PRINCIPAL is the high bidder on the sale(s) identified above and, within ten (10) days of the day of sale, transmits cash, certified check, cashier's check, bank draft or money order, payable to the STATE, in the amount of the bid guaranty required by the terms of the Notice of Sale, *then* this obligation shall be void; *otherwise*, it shall remain in force.

SURETY will make payment to the STATE within ten (10) days after demand by the STATE whenever the PRINCIPAL shall fail to make timely payment as described above.

IN WITNESS WHEREOF: the PRINCIPAL and the SURETY have caused this bond to be executed on the date first mentioned.

SECOND OFFICER:

Signature: _____

Name: _____

Title: _____

PRINCIPAL: (Above Named)

Signature: _____

Name: _____

Title: _____

SURETY: (Local Office of Authorized Agent)

Signature: _____

Name: _____

Title: _____

Address: _____

City: _____

State & Zip: _____

SURETY: (Above Named)

Signature: _____

Name: _____

Title: _____

Address: _____

City: _____

State & Zip _____

NOTARY OR COMPANY SEAL IN THE SPACE ABOVE

Instructions for Completing Timber Sale Per Sale(s) Bid Bond

- A. This form is authorized for use as bid guaranty to qualify for bidding on Washington State Department of Natural Resources timber sales.
- B. The Timber Sale Per Sale Bid Bond may be used as bid guaranty on more than one timber sale auction held the same date at the same location.
- C. The full legal name and business address of the PRINCIPAL must be the same as will appear on the bidding record and timber sale contract. The bond must be signed by an authorized person, the name typed or printed, and title shown. If PRINCIPAL is a corporation, a second officer must sign in the space to the left of the signature of the officer executing for the PRINCIPAL.
- D. The full legal name and business address of the SURETY must be inserted where indicated. The bond must be signed by an authorized person. Additionally, the name must be typed or printed below the signature and the title must be shown. If this person is not an officer of the corporation, evidence of authority must be submitted.
- E. If the SURETY does not have a Washington State office or resident agent, but is authorized to transact surety business in the State of Washington as Surety, it may leave the local office signature block blank.
- F. The date of the bid bond must not be later than the auction date.
- G. **The State reserves the right to reject incomplete or *incorrect* bid bond forms, making such forms unacceptable as guaranty.**

STATE OF WASHINGTON
DEPARTMENT OF NATURAL RESOURCES

LOG SORT SEALED BID FORM

Sale Name _____ Agreement Number _____ Date _____

_____ hereby submits the following bid for delivered logs.
(Print Company Name)

_____ Telephone Number _____
(Print Name Authorized Company Representative) (Contact for bid result notification)

(Street Address)

(City, State and Zip)

Agreement Number	Sort Number	<u>Delivered Logs Bid Amount</u> (fill in one only)	
		\$ /MBF	\$ /TON

Bid Deposit Amount \$ _____

- Bid Deposit Type:**
- Cash, Certified Check, Cashiers Check, or Money Order
 - Per Sale Bid Bond
 - Statewide Bid Bond, Number _____

The successful bidder agrees to furnish payment security acceptable to the State in the amount as described in clause P-041 of the Purchaser’s contract prior to log delivery and at a date to be determined by the State.

Bidder’s Warranty and Bid Signature

By signing and submitting this bid as offer to purchase forest products from the State, the Bidder hereby warrants to the State that they have had an opportunity to fully inspect the sale area and the forest products being sold. Bidder further warrants to the State that they enter this bid based solely upon their own judgment of the value of the forest products, formed after their own examination and inspection of both the timber sale area and the forest products being sold. Bidder also warrants to the State that they enter this bid without any reliance upon the volume estimates, acreage estimates, appraisals, pre-bid documentation, or any other representation by the State Department of Natural Resources.

(Signature of Authorized Representative submitting this bid)

(Date of Signature)

(Print name and title of Authorized Representative submitting this bid)

NOTES: A separate bid form is required for each log sort bid and must be delivered in a separate envelope. Photocopies of this bid form may be used. Each photocopy must have original signatures. Final contract award is contingent upon the State’s haul cost analysis. Actual haul route may vary and is subject to change at the State’s discretion. All sales are subject to confirmation by the Commissioner of Public Lands as per RCW 79.15.100.

LOG SORT SEALED BID SUPPLEMENTAL INFORMATION FORM

(Print Company Name)

(Sale Name)

(Agreement Number)

(Sort Number)

(email: optional for DNR production report distribution)

Log Manufacturing Specifications:

Sawlog and Peeler sorts: Enter at least one preferred log length including trim for each log length range below.

Pole sorts (Distribution): Enter three or more lengths. Attach preferred manufacturing information.

Pole sorts (Transmission): Enter six or more lengths. Attach preferred manufacturing information.

Tonnage sorts: See bid form instructions for required log lengths. Enter additional custom lengths as desired.

Log Length Ranges	Bidder's Preferred Log Lengths
16 ft. through 20 ft.	
22 ft. through 30 ft.	
32 ft. through 40 ft.	
Distribution Poles – 35 ft. through 55 ft.	
Transmission Poles – 60 ft.+	

Log Delivery Information:

1) Designate the point of delivery and address (must be a street address)

(Location Name)

(Street Address)

(City, State and Zip)

2) Designate the state approved Scaling and Weighing facilities closest to the point of delivery as needed.

Scaling Location Information

Weighing Location Information

(Scaling Location Name)

(Weighing Location Name)

(Third Party Scaling Organization)

(Weighing Location Owner)

(Scaling Location Street Address)

(Weighing Location Street Address)

(Scaling Location City, State and Zip)

(Weighing Location City, State and Zip)

Final contract award is contingent upon the State's haul cost analysis. Actual haul route may vary and is subject to change at the State's discretion. Additional terms or conditions requested by the bidder on or attached to the Log Sort Sealed Bid or Supplemental Information Forms are informational only and non-binding.

Instructions for Completing the Log Sort Sealed Bid and Supplemental Information Forms.

All bids submitted for the purchase of forest products being sold by the Washington State Department of Natural Resources must have an original signature on behalf of the person or entity submitting the bid, and must be on the form(s) provided in this booklet or a photocopy thereof. The DNR will not accept bids that are not signed, and will not accept bids that are not on the current, approved bid form. All appropriate blanks including Agreement Number, Sort Number, Bid amount (per mbf or ton as appropriate for the sort), Bid deposit amount and type. Signatures and date on bid form must be completed including the bid bond number if bidder is relying upon a bid bond for bid deposit.

Bids shall not be accepted if a completed '**Log Sort Sealed Bid Supplemental Information Form**' is not included with the approved '**Log Sort Sealed Bid Form**'.

Required log lengths for tonnage sorts: Preferred log lengths for tonnage sawlog sorts shall include the following plus any additional lengths identified on the Bid Supplemental Information form:

Species Type	Preferred Lengths
Conifer Sorts	16', 20', 24', 26', 32', 40'
Hardwood Sorts	18', 20', 26', 28', 30', 36', 38', 40'

For more specific information, contact the appropriate region office.

In-Person Bids

- A. Sealed bids must be in auction box or auction envelope before 10:00 a.m. on the day of sale at the location specified in the notice of sale.
- B. Sealed bids must be submitted in an envelope with the name of the sale, the bidder's name and the contract agreement number clearly written on the outside of the envelope. The full legal name and business address of the bidder must be inserted where indicated on the form, and must be the same as the name on the bid bond and timber sale contract. The bid form must be signed by an authorized person. When a bidder has more than one person authorized to bid, then documentation of those persons with signature authority for bidding must accompany the bid or be on file at the region office. Sealed bid envelopes are available at all region offices. One bid per envelope.
- C. Sealed bid envelopes must contain the following:
 1. A completed '**Log Sort Sealed Bid Form**';
 2. A completed '**Supplemental Information Form**' and;
 3. A bid deposit

Mailed Bids

- A. Mail-in bid envelopes are required to have printed on the outside: "DO NOT OPEN UNTIL SALE DATE. SEALED BID ENCLOSED." The sealed bid envelope(s) will be enclosed inside the mailed-in envelope. Mailed bids must be submitted in an envelope with the name of the sale, the bidder's name and the agreement number clearly written on the outside of the envelope. The full legal name and business address of the bidder must be inserted where indicated on the form, and must be the same on the bid bond and timber sale contract. The bid form must be signed by an authorized person. When a bidder has more than one person authorized to bid, then documentation of those persons with signature authority for bidding must accompany the bid or be on file at the region office. Mail-in envelopes are available at all region offices. One bid per mailed-in envelope.
- B. Mail-in or otherwise delivered bids will be accepted up to 4:30 p.m. the last business day before the auction by the region office in which the sale is located. Bidders assume the risk for the method of delivery they chose. The DNR assumes no responsibility for any delays caused by any delivery service.
- C. Sealed bid envelopes must contain the following:
 1. A completed '**Log Sort Sealed Bid Form**';
 2. A completed '**Log Sort Sealed Bid Supplemental Information Form**' and;
 3. A bid deposit

Department of Natural Resources Region Offices

Olympia Headquarters
 1111 Washington St SE
 MS 47000
 Olympia, WA 98504-7000
 (360) 902-1000
www.dnr.wa.gov

Product Sales & Leasing Division

1111 Washington St SE
 MS 47014
 Olympia, WA 98504-7014
 (360) 902-1600

South Puget Sound Region
 950 Fairman Ave N
 Enumclaw, WA 98022-9282
 (360) 825-1631

Pacific Cascade Region

601 Bond Road
 PO Box 280
 Castle Rock, WA 98611-0280
 (360) 577-2025

Southeast Region

713 Bowers Road
 Ellensburg, WA 98926-9301
 (509) 925-8510

Northwest Region

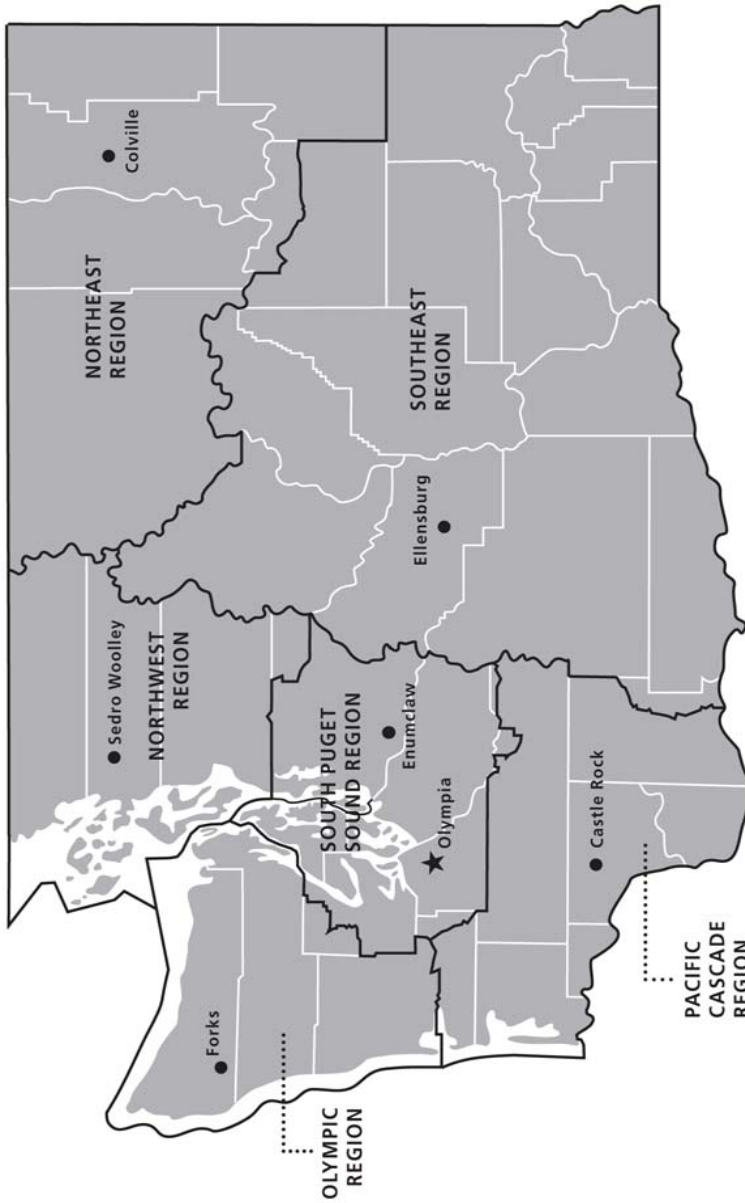
919 N Township St
 Sedro Woolley,
 WA 98284-9384
 (360) 856-3500

Olympic Region





411 Tillicum Lane
 Forks, WA 98331-9271
 (360) 374-2800

Northeast Region

225 S Silke Road
 PO Box 190
 Colville, WA 99114-0190
 (509) 684-7474



DNR REGIONS

-  DNR Region Boundaries
-  County Boundaries
-  DNR Region Office
-  Olympia Headquarters



WASHINGTON STATE DEPT OF
NATURAL RESOURCES



For more information about how public lands are managed visit DNR's web page at www.dnr.wa.gov

Fire, Burn Ban Information and Region Offices
 Toll Free: 1-800-527-3305 General TTY: 7-1-1





WASHINGTON STATE DEPT OF
**NATURAL
RESOURCES**

1111 WASHINGTON ST SE
MS 47014
OLYMPIA WA 98504-7014

www.dnr.wa.gov

For alternate formats
of this document,
Call (360) 902-1000
TRS: 7-1-1

PRINTED IN THE USA ON RECYCLED PAPER

