



# Public Auction Sale of Timber

## September 2022

**Book 1039**



# IMPORTANT NOTICES

## *Natural Resources (DNR)*

### **Governmental Regulatory Actions or Orders**

The purchaser assumes the risk of liabilities related to regulatory actions or orders by any government agency that may affect the operability of these timber sales. Such regulatory actions or orders include, but are not limited to, actions taken pursuant to the State Forest Practices Act, Chapter 76.09 RCW, and the Federal Endangered Species Act, 16 U.S.C. §§ 1531-1544. Please see timber sale contract clauses G-066 and G-220 for further information.

### **Threatened and Endangered Species**

DNR cannot verify the presence or absence of any threatened or endangered species that may affect the operability of the timber sale. Purchasers must rely on their own assessments.

### **Export Restricted**

All timber purchased under these state DNR contracts shall not be exported outside of the United States until the timber has been processed. Purchasers shall not violate any of the prohibitions in WAC 240-15-015 (relating to the prohibitions on export and substitution), WAC 240-15-025 (relating to reporting requirements), and WAC 240-15-030 (relating to enforcement). If purchasers knowingly violate WAC 240-15-015, purchasers shall be barred from bidding on or purchasing export restricted timber as provided.

### **Cover photos**

Timber Sales in this book are from state trust lands, managed to help build K-12 public schools, state universities, colleges, prisons, mental hospitals, the state Capitol; and to support local services in many counties.

**Top right:** Landscape view of DNR-managed trust lands in western Washington. Photo courtesy of DNR staff.

**Second down right:** Timber harvest operations on DNR-managed trust land. Photo courtesy of DNR staff.

**Third down right:** Log truck loaded with timber harvested from DNR-managed trust land. Photo courtesy of DNR staff.

**Bottom right:** Marcus Whitman Elementary School in Richland Washington. Photo courtesy of Richland School District.

**Bottom middle:** Storytime at the Shelton Timberland Library. Photo courtesy of Timberland Regional Library.

**Bottom left:** Douglas-fir seedlings growing at the Webster Nursery. Many of these seedlings will be planted following timber harvest on DNR-managed trust lands. Photo courtesy of DNR staff.

## Table of Contents

Certification Opportunities for DNR Timber Purchasers	Page 3
Bidder/Purchaser Auction and Bidding Information	Page 5
Summary of All Sales Being Offered in September	Page 9
Trap 15	Page 11
Unibrow	Page 15
Pinnacoal	Page 19
Q Cook	Page 25
Sealed Bid Form and Instructions	Page 31
Statewide Bid Bond and Instructions	Page 33
Timber Sale per Sale Bid Bond and Instructions	Page 37
Log Sort Sealed Bid Form and Instructions	Page 41





## **Certification Opportunities for DNR Timber Purchasers**

Certified forests are grown to an approved set of standards which demonstrate environmentally responsible, socially beneficial, and economically viable management practices that promote responsible forestry. This unique commitment to responsible forestry recognizes that forest landowners play a critical role in ensuring the long-term health and sustainability of our forests.

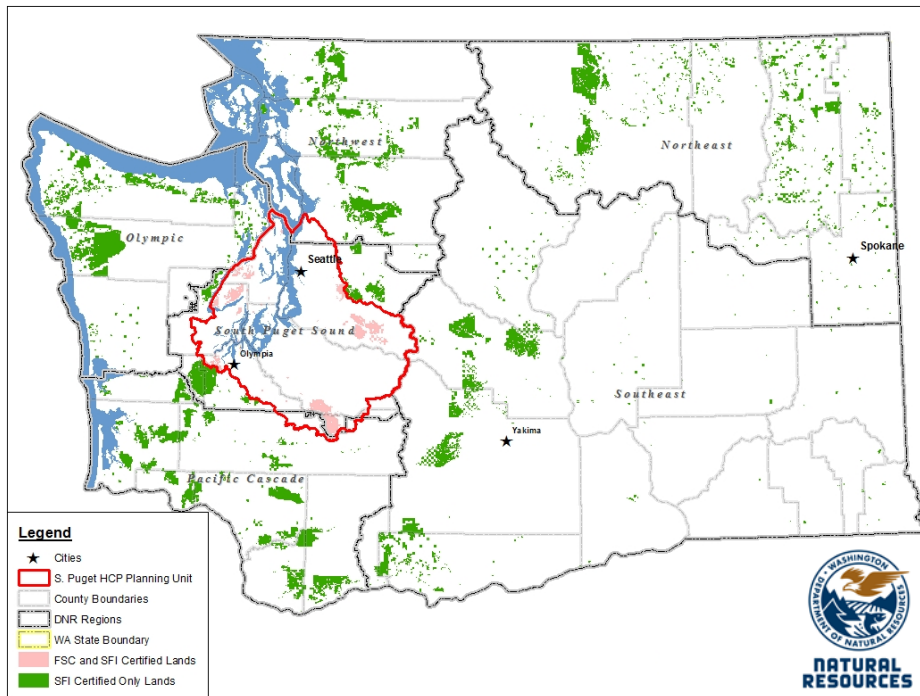
Forest Stewardship Council® (FSC®) is an independent, non-profit organization that promotes responsible management of the world's working forests through the development of forest management standards, a voluntary certification system, and trademarks that provide recognition and value to products bearing the FSC label in the marketplace. FSC standards ensure forestry is practiced in an environmentally responsible, socially beneficial, and economically viable way.

Sustainable Forestry Initiative Inc. is an independent, non-profit organization internationally endorsed and accepted around the world. The Sustainable Forestry Initiative® (SFI) program is based on the premise that responsible environmental behavior and sound business decisions can coexist. Its three-chamber Board of Directors governs all aspects of the SFI® program, with equal representation from the environmental, economic, and social sectors.

Currently, all Department of Natural Resources (DNR)-managed forestlands and conservation areas in Washington State are certified under the SFI program Standard. Forestlands within DNR's South Puget Habitat Conservation Plan Planning Unit, located within parts of King, Pierce, Thurston, Lewis, Kitsap, and Mason counties, are dually certified under both the FSC-US Forest Management Standard and the SFI program Standard.

Certification under each standard involves an inspection audit of the landowner's forest management activities by an independent, accredited third-party to verify that it meets specified forest management principles. If the forest unit complies with the specific standard, the landowner receives a certificate of conformance ensuring that responsible forestry is being practiced. Both standards encourage integration of perpetual growing and harvesting of trees with strong measures to protect wildlife, plants, soil, water, and air quality. Both standards provide a seal of approval that forests certified under these principles are well-managed. The global marketplace recognizes and endorses multiple forest certification standards. Each standard has individual market niches. By being dually certified, DNR can maximize its customer base and provide choices to the consumer.





DNR's FSC certificate number is: BV-FM/COC-080501

DNR's SFI certificate number is: PwC-SFIFM-513

DNR-managed forestlands within the South Puget Habitat Conservation Plan Planning Unit (located within parts of King, Pierce, Thurston, Lewis, Kitsap, and Mason counties) are certified as being in compliance with the Forest Stewardship US Forest Management Standard.

To learn more about chain of custody and demonstrating that your timber is derived from a responsibly managed forest and/or to learn more about becoming a participant in the FSC Program, visit <https://us.fsc.org/>.

To learn more about DNR timber sales certified under the FSC Standard, visit [www.dnr.wa.gov](http://www.dnr.wa.gov).

FSC A.C. owns all right, title, and interest in and to the Forest Stewardship Council trademarks.

All DNR-managed forested state trust lands across the state have been certified as being in compliance with the Sustainable Forestry Initiative Forest Management Standard.

To learn more about chain of custody and demonstrating that your timber is derived from a responsibly managed forest and/or to learn more about becoming a participant in the SFI program, visit [www.sfiprogram.org](http://www.sfiprogram.org).

To learn more about DNR timber sales certified under the SFI program Standard, visit [www.dnr.wa.gov](http://www.dnr.wa.gov).

SFI Marks are registered marks owned by Sustainable Forestry Initiative Inc.

**To learn more about certification on DNR-managed forested state trust lands, visit <https://www.dnr.wa.gov/programs-and-services/product-sales-and-leasing/timber-sales/forest-certification> or contact:**

**Product Sales & Leasing Division, Product Sales Section:**

Duane Emmons, Division Manager, 360-902-1088, [duane.emmons@dnr.wa.gov](mailto:duane.emmons@dnr.wa.gov)  
Steve Teitzel, Operations, 360-902-1741, [steve.teitzel@dnr.wa.gov](mailto:steve.teitzel@dnr.wa.gov)

**Forest Resources Division, HCP and Scientific Consultation Section:**

Allen Estep, Assistant Division Manager, 360-902-2898, [allen.estep@dnr.wa.gov](mailto:allen.estep@dnr.wa.gov)  
Nicole Jacobsen, Forest Certification Program Lead, 360-902-1283, [nicole.jacobsen@dnr.wa.gov](mailto:nicole.jacobsen@dnr.wa.gov)

# Washington State Department of Natural Resources (DNR)

## Bidder's/Purchaser's Inspection of Sale Area and Forest Products

Acreage estimates and volume estimates contained within each timber notice of sale and each timber sale contract are made only for administrative and identification purposes. Except as expressly provided by the timber sale contract, the purchaser shall be responsible for paying the entire purchase price, even if the actual acreage or timber volume varies from the estimated quantity or volume shown.

All prospective bidders have the opportunity and are expected to inspect the sale area and the forest products located thereon. Bidders shall not rely on any representations by the State including, but not limited to, acreage estimates, volume estimates, appraisal or pre-bid documentation. The successful bidder/purchaser will further warrant that they have entered the timber sale contract without any reliance upon the DNR's volume estimates, acreage estimates, appraisals, pre-bid documentation, or any other representation by the DNR.

*Any timber sale contract arising out of these public auctions will require the successful purchaser to warrant that they are entering the timber sale contract based solely upon their own judgment of the value of the forest products, formed after their own examination and inspection of both the timber sale area and the forest products being sold.*

## Exclusion and Disclaimer of Warranties

The PARTIES AGREE that the IMPLIED WARRANTIES OF MERCHANTABILITY AND FITNESS FOR A PARTICULAR PURPOSE, and ALL OTHER WARRANTIES EXPRESS OR IMPLIED, ARE EXCLUDED from this transaction, and shall not apply to the goods sold. For example, THE FOLLOWING SPECIFIC MATTERS ARE NOT WARRANTED, and are EXCLUDED from this transaction:

- A. ***The merchantability of the forest products.*** The use of the term "merchantable" in any document is not intended to vary the foregoing.
- B. ***The condition of the forest products.*** All forest products will be conveyed "AS IS."
- C. ***The acreage contained within any sale area.*** Any acreage descriptions appearing in the timber notices of sale, timber sale contract, timber sale map or other documents are estimates only, provided solely for administrative and identification purposes.
- D. ***The volume, quality, or grade of the forest products.*** The descriptions of the forest products to be conveyed are estimates only, made solely for administrative and identification purposes.
- E. ***The correctness of any soil or surface conditions, presale construction appraisals, investigations, and all other pre-bid documents prepared by or for the State.*** These documents have been prepared for the State's appraisal purposes only.
- F. ***That the sale area is free from threatened or endangered species, or their habitat.*** The State is not responsible for any interferences with forestry operations that result from the presence of any threatened or endangered species, or the presence of their habitat, within the sale area.
- G. That the forestry operations to be performed under this contract will be free from regulatory actions by governmental agencies. The State is not responsible for actions to enforce regulatory laws, such as the Washington Forest Practices Act (Chapter 76.09 RCW), taken by the Department of Natural Resources or any other agency that may affect the operability of these timber sales.
- H. Items contained in any other documents prepared for or by the State.

Please also see timber sale contract clause G-060 for further information.

# BIDDING PROCEDURES FOR TIMBER AUCTIONS

*The general requirements that follow are a part of all Timber Notices of Sale to be auctioned by the Department of Natural Resources (DNR).*

## General Information

*The State reserves the right to waive minor irregularities and the right to reject any or all bids.*

- A. This book contains the timber notices of sale and maps for each timber sale scheduled to be auctioned. More specific information can be obtained by contacting the appropriate region office at the number listed on the back cover of this book. Sales may be added to each monthly auction by the Department which are not included in this publication. This publication is not updated following original production.
- B. The timber notice of sale is a summary of sale information. For more specific information, interested parties are encouraged to view the Auction Packets on [www.dnr.wa.gov](http://www.dnr.wa.gov). Auction Packets contain **DRAFT** copies of the timber notice of sale, map, contract, road plan, cruise data, precruise and cruise narrative, and other associated documents.
- C. Timber sale auction packets may also be obtained at no charge for individual sales by visiting the appropriate region office.
- D. Timber sale contracts contain extensive terms and conditions that will be binding upon successful high bidders. Each bidder should carefully review all terms contained in the appropriate **DRAFT** timber sale contract prior to bidding on a sale, and should review the final contract prior to signing. **DRAFT** timber sale contracts are contained in the auction packets and are available upon request at the respective region office.
- E. Sales advertised in this book are subject to the Board of Natural Resources approval before they will be sold. The Board meets and approves sales approximately six weeks prior to auction.
- F. The State does not guarantee the accuracy of any information contained herein pertaining to particular sales. Therefore, all prospective purchasers are expected to make their own independent inspections and appraisals prior to bidding.
- G. If any conflict exists between the information in the Timber Notice of Sale, timber sale map, sale auction packets and that in the timber sale contract, the signed contract will prevail.
- H. Purchasers must pay the Forest Excise Tax on the bid price, permanent road construction costs, and other considerations. The tax rate is 5% without the EARR credit and 4.2% with the credit. For more information contact the Department of Revenue, Forest Tax Section at 1-800-548-8829.
- I. **All sales are subject to confirmation by the DNR under RCW 79.15.120.**
- J. **Within 30 days of sale confirmation, the apparent high bidder will provide to the State the Performance Security specified on each Notice of Sale. The successful bidder also agrees to return a signed contract to the State within 30 days of confirmation.** Failure to provide a signed contract to the state within 30 days of confirmation may result in a loss of bidder's rights to the products sold and forfeiture of initial deposit moneys.
- K. Each DNR region office has information about sales offered in that region. For further information, contact the respective DNR region office. Region office addresses and telephone numbers appear on the back cover of this booklet.
- L. The purchaser assumes the responsibility for any costs associated with extra maintenance or repair levied by a county for any county road used by the purchaser.

## Auction Time and Location

Auctions will start at 10:00 a.m. and close at 4:00 p.m. on the date and at the location specified in each Timber Notice of Sale.



## **Bidding Process**

- A. All timber will be auctioned using the sealed bid method.
- B. Bids submitted on the day of auction must be in the bid box at the specified auction location before 10:00 a.m. The respective DNR region office must receive mailed bids by 4:30 p.m., on the last business day before the auction. Bidders assume all risk for the method of delivery.
- C. The DNR has the right to reject bid forms that are completed incorrectly. *All bid forms must have an original signature on behalf of the person or entity submitting the bid, and must be on the form provided in this booklet or a photocopy thereof. Revised documents are not permissible.* Bidding instructions are on the back of the Sealed Bid Form. A bid deposit must be included in the sealed bid envelope unless using a Timber Sale Statewide Bid Bond.
- D. All bids must include the completed Sealed Bid Form and bid deposit.
- E. Bids will be opened in each respective region in the order in which sales appear in the Public Auction Sale of Timber book (alphabetically by county and by agreement number). Sales added after the book is printed will be inserted to retain this order. Sort sales may be auctioned out of this sequence at the State's convenience.
- F. If a tie bid occurs, the names of the tie bidders will be placed in a hat and the successful bidder will be determined by a drawing.
- G. Opportunities to Withdraw Bids:  
For all sales offered on a stumpage basis only, the apparent high bidder on a particular sale will have the option of withdrawing additional sealed bids submitted for any remaining sales to be auctioned. The apparent high bidder must exercise this option within two minutes after the apparent high bidder is announced. This option is not available for sales offered on a delivered basis.

## **Eligibility to Bid**

The following criteria must be met in order to bid on State timber sales:

- 18 years of age (or have a co-signer who meets the eligibility requirements)
- Licensed to do business in the State of Washington
- Eligible to bid on Export Restricted timber
- Authorized to submit bids

## **Authorized Representatives**

Company officers or company authorized representatives may bid on State sales, sign State documents, or sign checks. A list of authorized representatives and their specific authorities must be submitted, in writing, to the Department of Natural Resources, Product Sales and Leasing Division, P.O. Box 47014, Olympia, Washington, 98504-7014, ten days in advance of the auction. *A company owner or officer must sign this submittal.*

## **Bid Deposits**

- A. Required bid deposits are listed on each Timber Notice of Sale.
- B. Bid deposits must be in the form of cash, certified check, cashiers' check, money order or bid bond.
- C. Bid bonds may be either a Timber Sale Per Sale Bid Bond or a Timber Sale Statewide Bid Bond.
- D. All bid deposits shall be submitted by the person or entity submitting the bid and made payable to the Department of Natural Resources. **Third party deposits will not be accepted.**

## **Timber Sale Per Sale Bid Bonds**

- A. The Per Sale Bid Bond shall guarantee payment of the bid deposit **within ten days of auction.**
- B. The balance between the bid bond and the Initial Deposit payment is due **by 4:30 p.m., on the day of auction.**
- C. Additional forms and instructions for a Per Sale Bid Bond are available at any DNR region office.

## **Timber Sale Statewide Bid Bond**

- A. Statewide Bid Bonds shall guarantee payment of the Initial Deposit on any statewide timber sale while the bond is in effect.
- B. The Statewide Bid Bond must be received by the Department of Natural Resources, Product Sales and Leasing Division, P.O. Box 47014, Olympia, Washington, 98504-7014, ten days in advance of the auction date. The bond shall be in the amount of \$150,000.00.
- C. Successful bidders using a Statewide Bid Bond must pay the total Initial Deposit payment (10% of the total bid price) **by 4:30 p.m., on the day of the auction.**
- D. A Statewide Bid Bond cannot be used to secure the Initial Deposit payment due the day of auction.
- E. Additional forms and instructions for a statewide bid bond are available at any DNR region office.

## **Payments**

The initial deposit for a sale is 10% of the total bid value as submitted by the apparent high bidder (25% if the bidder is a defaulter as defined under WAC 332-140-300) and never less than \$5,000.00 for lump sum sales. For Lump Sum sales appraised at less than \$5,000.00, the entire bid value is due on day of auction.

- A. Apparent high bidders using cash, certified check, cashiers' check or money order as a bid deposit must pay the total Initial Deposit amount by 4:30 p.m. on auction day.
- B. Apparent high bidders using a Timber Sale Per Sale Bid Bond as a bid deposit must pay the difference between the bid deposit and the total initial deposit by 4:30 p.m., on the day of auction. The bid bond amount must be replaced with a certified check, cashiers' check, bank draft, cash, money order, or wire transfer within ten days of the auction.
- C. Apparent high bidders using a Timber Sale Statewide Bid Bond must pay the entire Initial Deposit amount by 4:30 p.m. on the day of auction.
- D. All payments must be in the form of a certified check, cashiers' check, bank draft, cash, money order or wire transfer.



**Summary Report of All Sales for the Month of September 2022**

---

**Board Sales**

<u>County</u>	<u>Region</u>	<u>Agree #</u>	<u>FSC®</u>	<u>Sale Name</u>	<u>Volume</u>	<u>Value</u>
Pacific	Pacific Cascade	102759		TRAP 15	6,774	\$1,767,000.00
Wahkiakum	Pacific Cascade	101956		UNIBROW	1,103	\$424,000.00
Whatcom	Northwest	102825		PINNACOAL	3,435	\$942,000.00
<b>Total</b>					11,312	\$3,133,000.00

**Region Sales**

<u>County</u>	<u>Region</u>	<u>Agree #</u>	<u>FSC</u>	<u>Sale Name</u>	<u>Volume</u>	<u>Value</u>
Okanogan	Northeast	103037		Q COOK	2,252	\$189,000.00
<b>Total</b>					2,252	\$189,000.00



*Scan with your smartphone or tablet to go to the September 2022 timber auction page*





TIMBER NOTICE OF SALE

SALE NAME: TRAP 15

AGREEMENT NO: 30-102759

AUCTION: September 29, 2022 starting at 10:00 a.m., COUNTY: Pacific Pacific Cascade Region Office, Castle Rock, WA

SALE LOCATION: Sale located approximately 11 miles south of Raymond, WA

PRODUCTS SOLD AND SALE AREA:

All timber, except leave trees marked with blue paint, trees bound by yellow "Leave Tree Area" tags, all down timber existing 5 years prior to day of sale and all down timber greater than 60 inches diameter bounded by the following:

Unit 1: White "Timber Sale Boundary" tags, D-Line and the D-1300 road.

Unit 2: White "Timber Sale Boundary" tags, pink flagging and the D-1000 road.

All forest products above located on part(s) of Sections 10, 14 and 15 all in Township 12 North, Range 8 West, W.M., containing 144 acres, more or less.

CERTIFICATION: This sale is certified under the Sustainable Forestry Initiative® program Standard (cert no: PwC-SFIFM-513)

ESTIMATED SALE VOLUMES AND QUALITY:

Table with columns: Species, Avg DBH, Ring Count, Total MBF, and MBF by Grade (1P, 2P, 3P, SM, 1S, 2S, 3S, 4S, UT). Rows include Hemlock, Douglas fir, Silver fir, Red alder, Redcedar, and Sale Total.

MINIMUM BID: \$1,767,000.00 BID METHOD: Sealed Bids

PERFORMANCE SECURITY: \$100,000.00 SALE TYPE: Lump Sum

EXPIRATION DATE: October 31, 2024 ALLOCATION: Export Restricted

BID DEPOSIT: \$176,700.00 or Bid Bond. Said deposit shall constitute an opening bid at the appraised price.

HARVEST METHOD: Shovel, Cable, and Cable-Assist. This sale is estimated to be 55% cable/cable assist harvest systems and 45% ground based harvest systems. Ground based yarding equipment will not be permitted on sustained slopes over 45%. Cable assist equipment will not be permitted on sustained slopes over 70%. For additional harvesting restrictions see Clause H-140 in the contract.





## TIMBER NOTICE OF SALE

---

**ROADS:** 3.47 stations of required reconstruction. 5.60 stations of optional construction. 85.03 stations of optional reconstruction. 346.13 stations of required prehaul maintenance. Rock used in accordance with the quantities on the ROCK LIST may be obtained from the D-Line Quarry and D-Line Quarry Stockpile (Sec 15, T12N R8W W.M) at no charge to the purchaser. For additional information see Road Plan 6-2 and 6-3. Rock used in accordance with the quantities on the ROCK LIST may be obtained from any commercial source at the Purchaser's expense. Rock sources are subject to written approval by the Contract Administrator before their use. For additional information see Road Plan 6-5. Purchaser shall conduct rock source development in accordance with Rock Source Development Plan. See Road Plan 6-10 for additional information. Road construction will not be permitted from October 1 to April 30 unless authorized in writing by the Contract Administrator. Road construction and reconstruction will be restricted from October 1 to April 30. See Road Plan 1-25 for additional information.

Marbled Murrelet timing restrictions are applied to D-1300 road, stations 10+84 to 12+92. Any road work, right-of-way timber falling and yarding, rock pit operations, or heavy equipment operation is not allowed from two hours before official sunset to two hours after official sunrise from April 1 through September 23. This restriction does not apply to hauling timber, rock or equipment. See Road Plan 1-27 and Contract H-142 for additional information.

### ACREAGE DETERMINATION

**CRUISE METHOD:** The sale acres were determined by GPS delineation. Cruise was completed using variable plot cruise methods.

**FEES:** \$115,158.00 is due on day of sale. \$9.00 per MBF is due upon removal. These are in addition to the bid price.

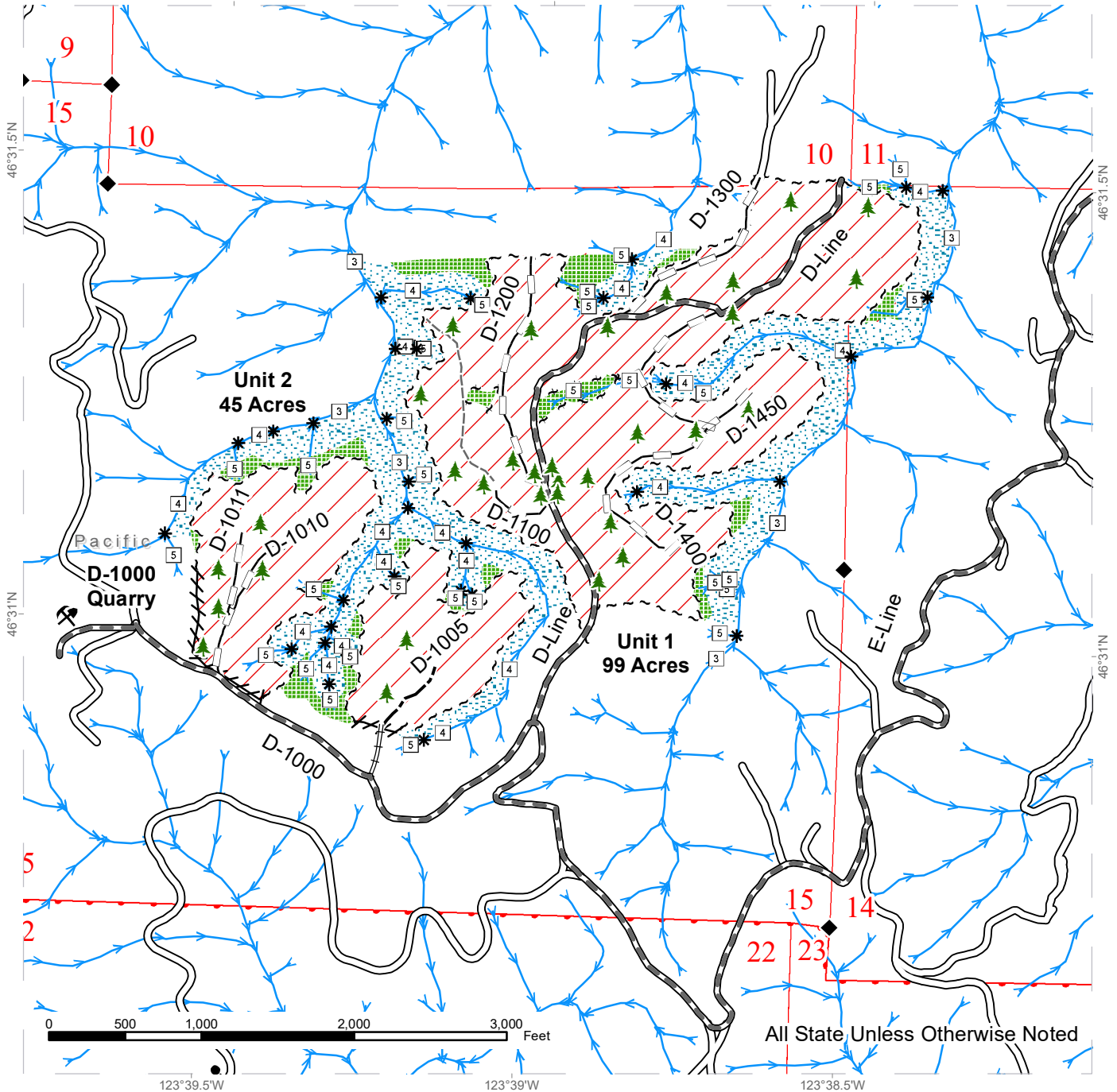
**SPECIAL REMARKS:** Purchaser responsible for identifying any utilities not listed. See Road plan 1-43 for additional information. Purchaser shall work in accordance with all applicable laws or rules concerning utilities. Purchaser is responsible for all notification, including "Call Before You Dig" and liabilities associated with the Utilities and their rights of way.

# TIMBER SALE MAP

**SALE NAME:** TRAP 15  
**AGREEMENT #:** 30-102759  
**TOWNSHIP(S):** T12R8W  
**TRUST(S):** Common School and Indemnity (3), State Forest Transfer (1)

**REGION:** Pacific Cascade Region  
**COUNTY(S):** Pacific  
**ELEVATION RGE:** 640-1360

123°39.5'W      123°39'W      123°38.5'W



All State Unless Otherwise Noted

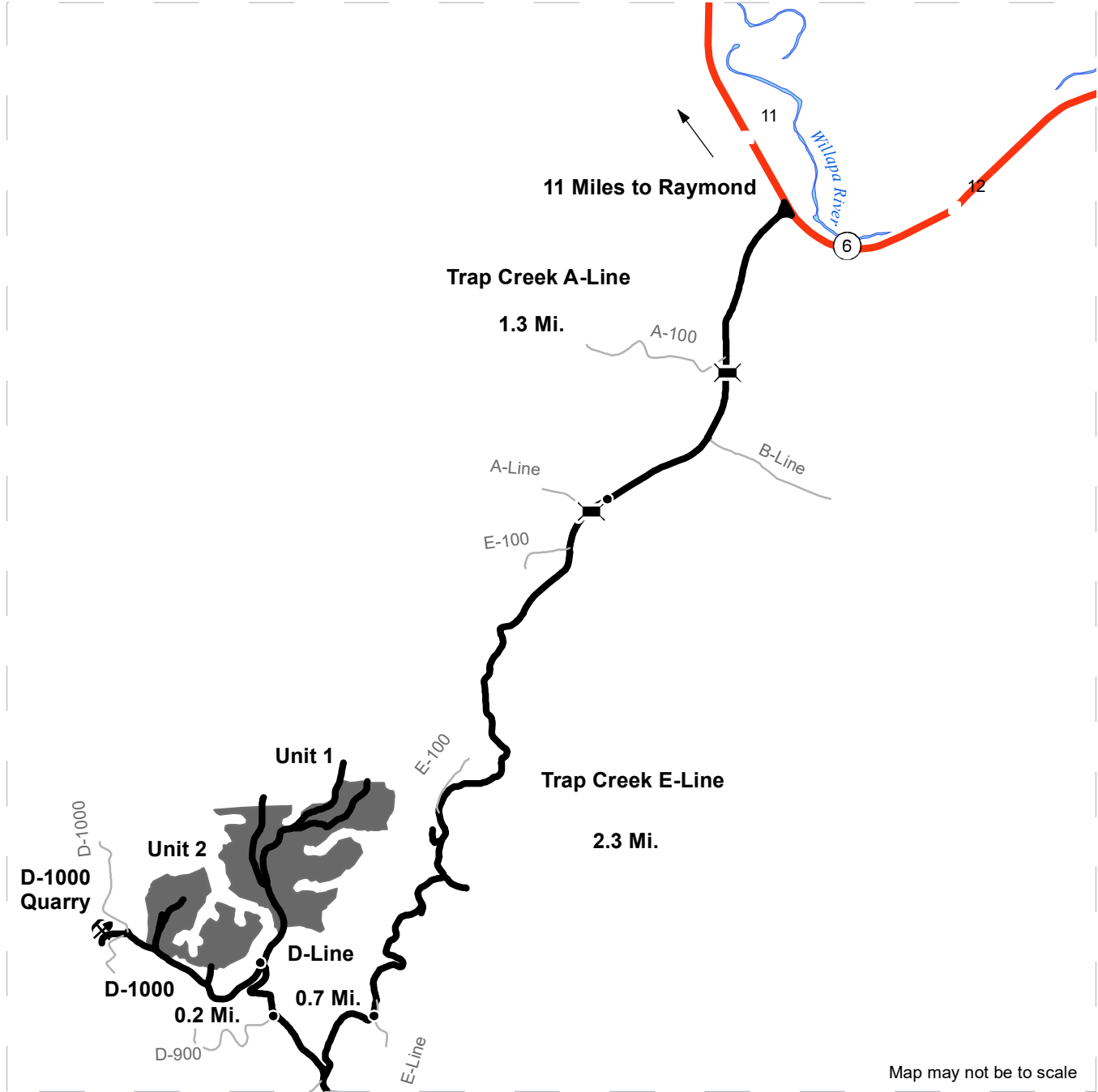
Sale Area	Existing Roads	Streams
Leave Tree Area	Required Pre-Haul Maintenance	Stream Type
Riparian Mgt Zone	Required Reconstruction	Stream Type Break
Sale Boundary Tags	Optional Construction	Survey Monument
Leave Tree Tags	Optional Reconstruction	Leave Tree Area <1/4-acre
Right of Way Tags	Old Grades/Trails	Rock Pit
Flag Line		



# DRIVING MAP

**SALE NAME:** TRAP 15  
**AGREEMENT#:** 30-102759  
**TOWNSHIP(S):** T12R8W  
**TRUST(S):** Common School and Indemnity (3), State Forest Transfer (1)

**REGION:** Pacific Cascade Region  
**COUNTY(S):** Pacific  
**ELEVATION RGE:** 640-1360



	Timber Sale Unit
	Highway
	Other Route
	Haul Route
	Milepost Markers
	Bridge
	Distance Indicator
	Rock Pit

**DRIVING DIRECTIONS:**

From State Route 6 Between mile marker 11 and 12.

Turn South onto Trap Creek A-Line.  
 Continue 1.3 Miles on Trap Creek A-Line to Trap Creek E-Line.  
 Turn Left onto Trap Creek E-Line and continue 2.3 Miles to D-Line.  
 Continue 1.0 Miles on D-Line To Unit 1.  
 From D-Line/D-1000 junction continue 0.3 Miles to Unit 2.

Continue 0.3 miles past Unit 2 to the D-1000 Quarry





TIMBER NOTICE OF SALE

SALE NAME: UNIBROW

AGREEMENT NO: 30-101956

AUCTION: September 29, 2022 starting at 10:00 a.m., COUNTY: Wahkiakum
Pacific Cascade Region Office, Castle Rock, WA

SALE LOCATION: Sale located approximately 18 miles west of Longview, WA

PRODUCTS SOLD AND SALE AREA:

All timber, except leave trees marked with blue paint, all down timber existing five years prior to day of sale, bounded by the following;

White "Timber Sale Boundary" tags with pink flagging, timber type change with pink flagging and the E-1000 road with pink flagging in Unit 1;

White "Timber Sale Boundary" tags with pink flagging and timber type change with pink flagging in Unit 2;

All forest products above located on part(s) of Sections 19 and 30 all in Township 9 North, Range 4 West, W.M., containing 23 acres, more or less.

CERTIFICATION: This sale is certified under the Sustainable Forestry Initiative® program Standard (cert no: PwC-SFIFM-513)

ESTIMATED SALE VOLUMES AND QUALITY:

Table with columns: Species, Avg DBH, Ring Count, Total MBF, Total \$/MBF, and MBF by Grade (1P, 2P, 3P, SM, 1S, 2S, 3S, 4S, UT). Rows include Douglas fir, Hemlock, Red alder, Redcedar, and Sale Total.

MINIMUM BID: \$437/MBF (est. value \$424,000.00) BID METHOD: Sealed Bids

PERFORMANCE SECURITY: \$84,800.00 SALE TYPE: MBF Scale

EXPIRATION DATE: September 30, 2024 ALLOCATION: Export Restricted

BIDDABLE SPECIES: Douglas fir

BID DEPOSIT: \$42,400.00 or Bid Bond. Said deposit shall constitute an opening bid at the appraised price.

HARVEST METHOD: Estimated 100% Ground Based.

ROADS: 65.17 stations of required prehaul maintenance. 1.13 stations of abandonment. Rock used in accordance with the quantities on the ROCK LIST shall be obtained from any commercial source at the Purchaser's expense.



## TIMBER NOTICE OF SALE

---

### ACREAGE DETERMINATION

**CRUISE METHOD:** The sale acres were determined by GPS delineation. Cruise was completed using variable plot cruise methods.

**FEES:** \$18,751.00 is due on day of sale. \$9.00 per MBF is due upon removal. These are in addition to the bid price.

**SPECIAL REMARKS:** This sale has approximately 108 MBF of high quality 2 saw DF, 30 MBF of high quality 3 saw DF. See cruise for further detail.





TIMBER NOTICE OF SALE

SALE NAME: PINNACOAL

AGREEMENT NO: 30-102825

AUCTION: September 28, 2022 starting at 10:00 a.m., COUNTY: Whatcom Northwest Region Office, Sedro Woolley, WA

SALE LOCATION: Sale located approximately 8 miles by road, northeast of Deming, WA.

PRODUCTS SOLD AND SALE AREA:

All timber (including preexisting dead and down cedar trees and cedar logs) bounded by white timber sale boundary tags and SU-58 Road, except preexisting dead and down cedar trees and cedar logs marked with blue paint, cedar snags, trees marked with blue paint on the bole and root collar, forest products tagged out by blue special management tags (RMZs), and forest products tagged out by yellow leave tree area tags in Unit #1.

All timber (including preexisting dead and down cedar trees and cedar logs) bounded by white timber sale boundary tags and BE-53 Road, except preexisting dead and down cedar trees and cedar logs marked with blue paint, cedar snags, trees marked with blue paint on the bole and root collar, forest products tagged out by blue special management tags (RMZs), and forest products tagged out by yellow leave tree area tags in Unit #2.

All timber bounded by white timber sale boundary tags and SU-58 Road, except cedar salvage (cedar snags, preexisting dead and down cedar trees and cedar logs), trees marked with blue paint on the bole and root collar, and forest products tagged out by yellow leave tree area tags in Unit #3.

All timber bounded by white orange right-of-way tags, SU-ML and existing rock pit in Unit #4 (SU-58 Pit Expansion).

All timber as described for removal in Schedule B located in the RMZ thinning areas (beyond the blue special management tags up to the white timber sale boundary tags) within Units #1 and #2.

All timber bounded by orange right of way tags.

All forest products above located on part(s) of Sections 5, 6, 7 and 8 all in Township 39 North, Range 5 East, W.M., containing 100 acres, more or less.

CERTIFICATION: This sale is certified under the Sustainable Forestry Initiative® program Standard (cert no: PwC-SFIFM-513)

ESTIMATED SALE VOLUMES AND QUALITY:

Table with columns: Species, Avg DBH, Ring Count, Total MBF, and MBF by Grade (1P, 2P, 3P, SM, 1S, 2S, 3S, 4S, UT). Rows include Hemlock, Douglas fir, Silver fir, Redcedar, Cottonwood, Red alder, Cedar Salvage, and Sale Total.





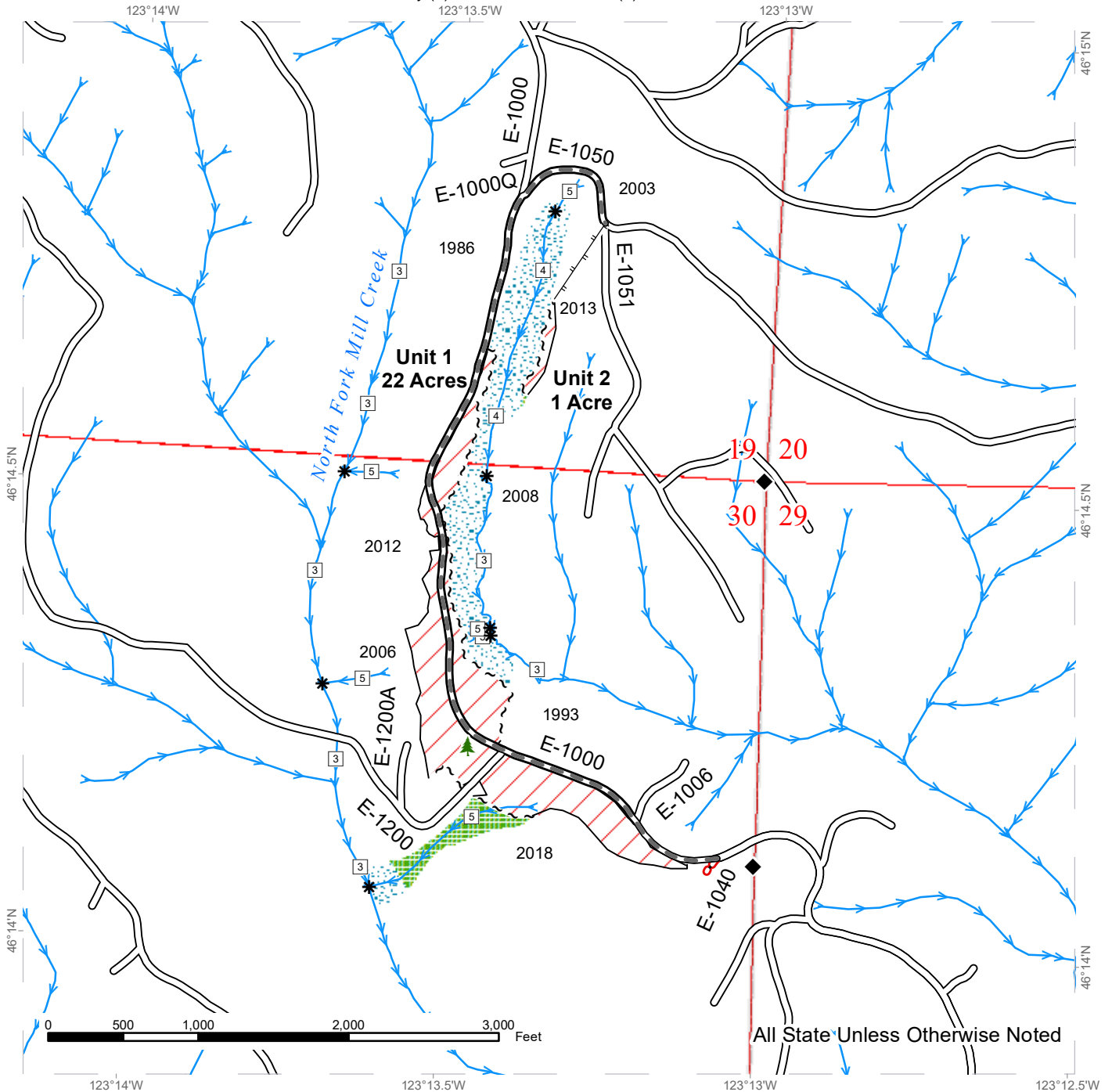
## TIMBER NOTICE OF SALE

3. CEDAR SALAVGE: The DNR's standard conversion factor is 600 board feet per cord (cord = 128 cubic feet). Cedar salvage forest products removed on a cord basis will be converted to MBF for payment purposes. An estimate of approximately 20 cords total, which equates to approximately 12 mbf, of cedar is available for removal in Units #1, #2, and right-of-way.
4. A portion of the construction is on an abandoned grade.
5. Cedar bark stripping/pulling has taken place, or will take place within the sale area prior to auction.

# TIMBER SALE MAP

**SALE NAME:** UNIBROW  
**AGREEMENT #:** 30-101956  
**TOWNSHIP(S):** T9R4W  
**TRUST(S):** Common School and Indemnity (3), State Forest Transfer (1)

**REGION:** Pacific Cascade Region  
**COUNTY(S):** Wahkiakum  
**ELEVATION RGE:** 760-880



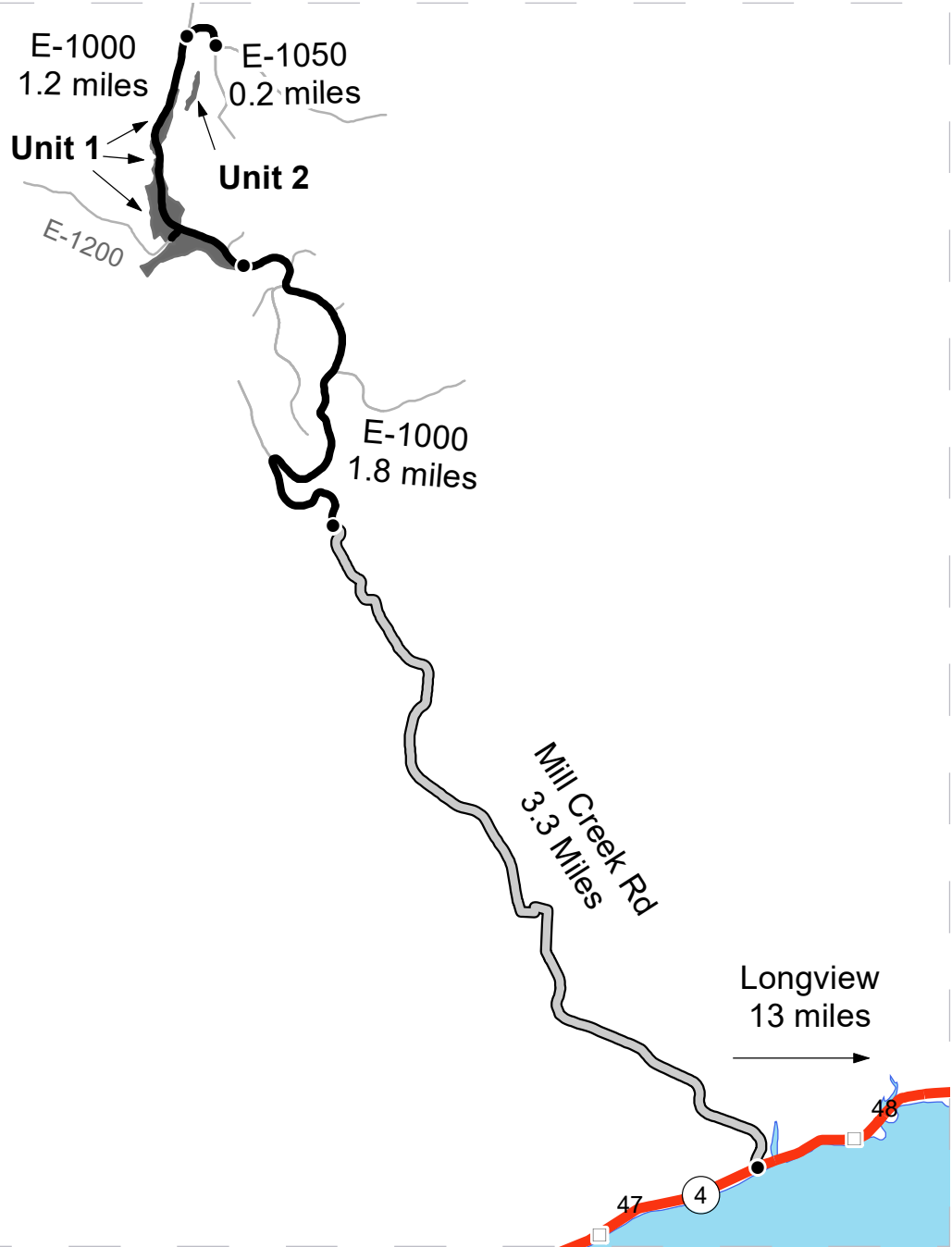
	Variable Retention Harvest		Existing Roads		Streams
	Leave Tree Area		Required Pre-Haul Maintenance		Stream Type
	Riparian Mgt Zone		Required Abandonment		Stream Type Break
	Leave Tree Area <1/4-acre		Designated Skid Trail		
	Sale Boundary Tags				
	Timber Type Change				



# DRIVING MAP

**SALE NAME:** UNIBROW  
**AGREEMENT#:** 30-101956  
**TOWNSHIP(S):** T9R4W  
**TRUST(S):** Common School and Indemnity (3), State Forest Transfer (1)

**REGION:** Pacific Cascade Region  
**COUNTY(S):** Wahkiakum  
**ELEVATION RGE:** 760-880



Map may not be to scale

- Timber Sale Unit
- Haul Route
- Other Road
- Milepost Markers

**DRIVING DIRECTIONS:**

From Route 4, drive north on Mill Creek Rd for 3.3 miles. Continue onto the E-1000. Continue north for 1.8 miles. Arrive at Unit 1.

Continue north for 1.2 miles. Turn east onto the E-1050. Continue for 0.2 miles, reaching a junction. Here begins the designated skid trail into Unit 2.

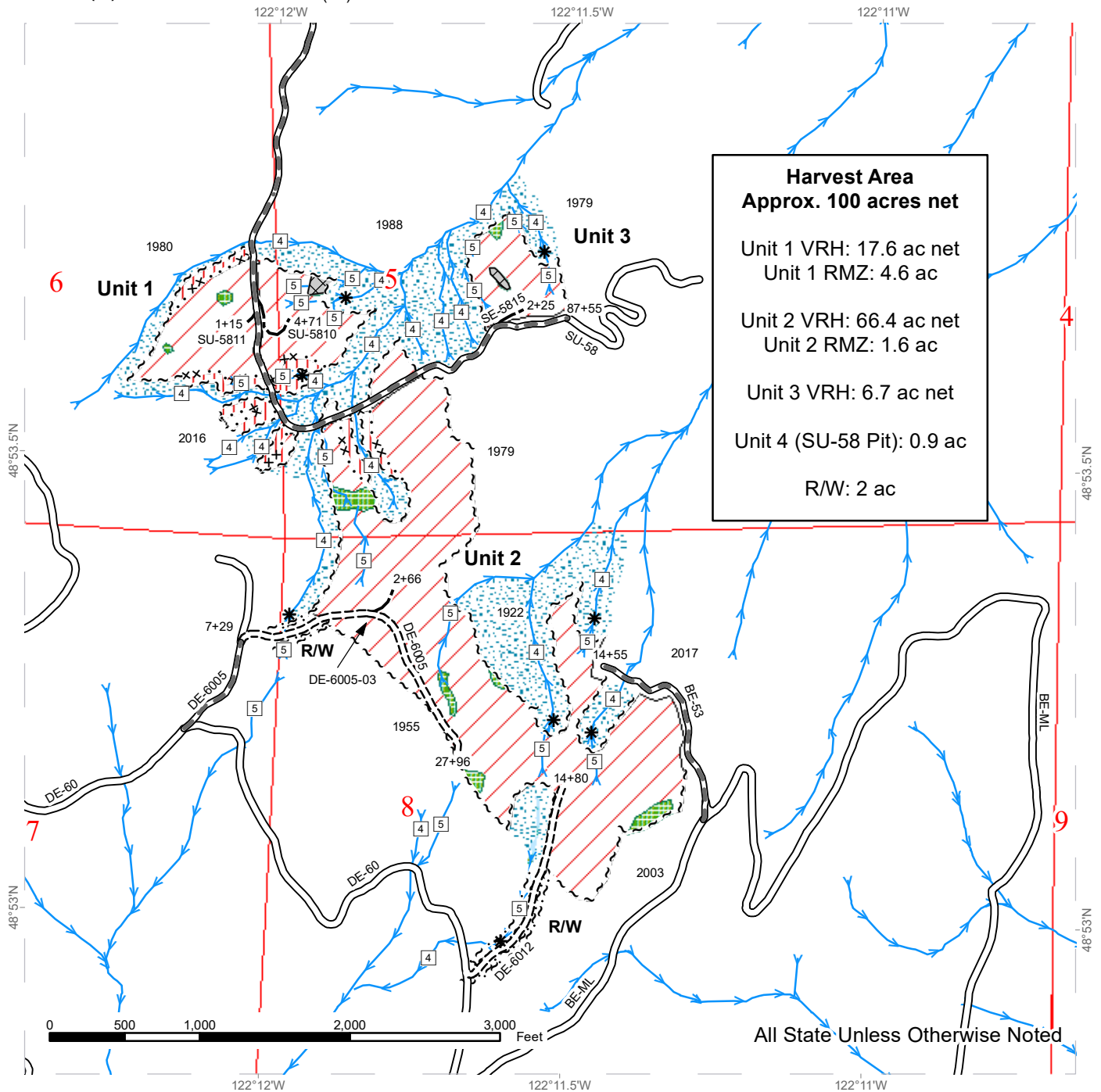




# TIMBER SALE MAP

**SALE NAME:** PINNACOAL  
**AGREEMENT #:** 30-102825  
**TOWNSHIP(S):** T39R5E  
**TRUST(S):** Scientific School (10)

**REGION:** Northwest Region  
**COUNTY(S):** Whatcom  
**ELEVATION RGE:** 2200-2800



**Harvest Area**  
**Approx. 100 acres net**

Unit 1 VRH: 17.6 ac net  
 Unit 1 RMZ: 4.6 ac

Unit 2 VRH: 66.4 ac net  
 Unit 2 RMZ: 1.6 ac

Unit 3 VRH: 6.7 ac net

Unit 4 (SU-58 Pit): 0.9 ac

R/W: 2 ac

All State Unless Otherwise Noted

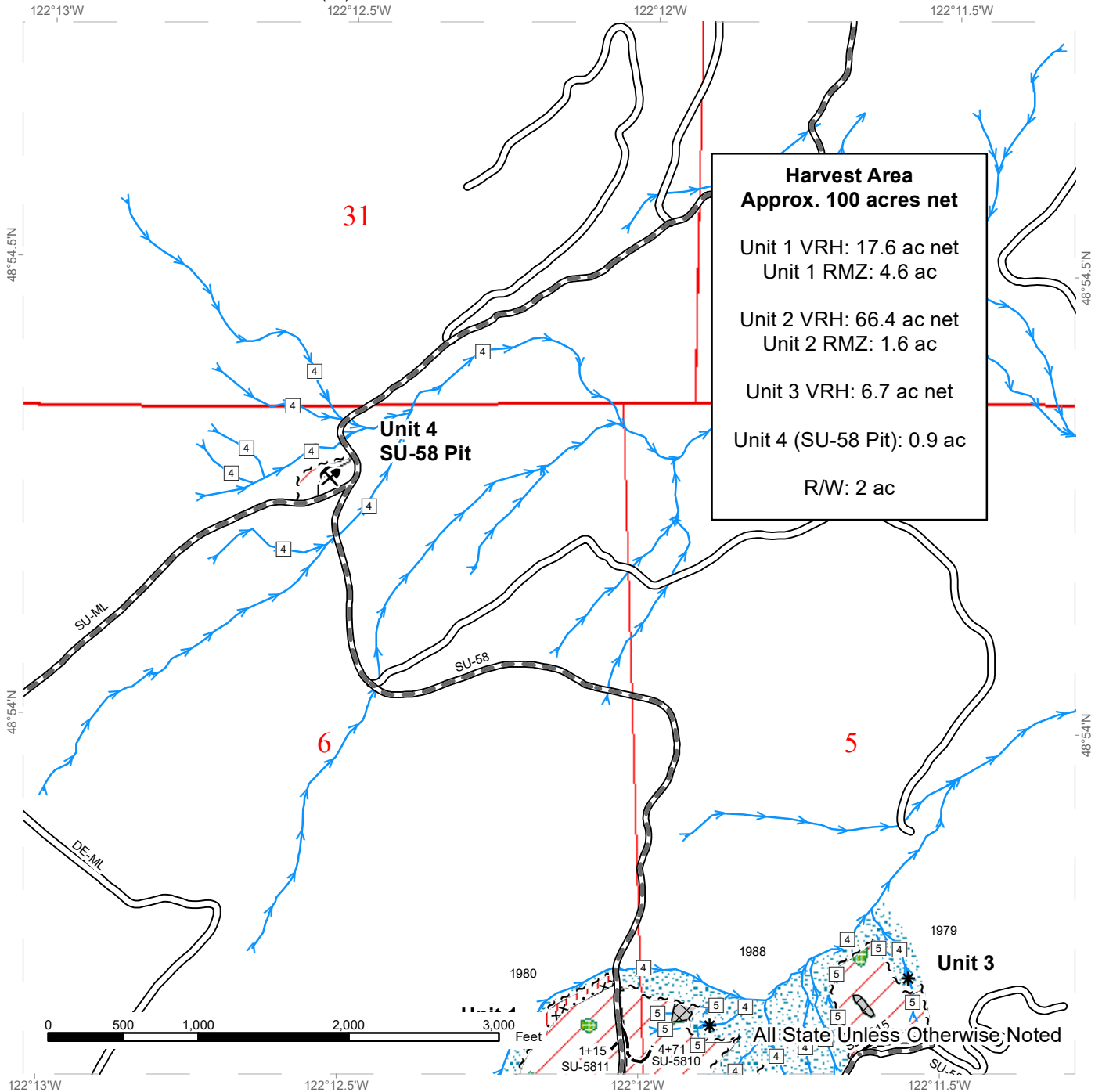
	Variable Retention Harvest		Sale Boundary Tags		Existing Roads
	Riparian Restoration		Special Mgmt Area		Required Pre-Haul Maintenance
	Leave Tree Area		Right of Way Tags		Required Construction
	Riparian Mgt Zone		Timber Type Change		Optional Construction
	Forested Wetland		Streams		Stream Type
	Non-tradeable Leave Tree Areas		Stream Type Break		



# TIMBER SALE MAP

**SALE NAME:** PINNACOAL  
**AGREEMENT #:** 30-102825  
**TOWNSHIP(S):** T39R5E  
**TRUST(S):** Scientific School (10)

**REGION:** Northwest Region  
**COUNTY(S):** Whatcom  
**ELEVATION RGE:** 2200-2800



**Harvest Area**  
**Approx. 100 acres net**  
 Unit 1 VRH: 17.6 ac net  
 Unit 1 RMZ: 4.6 ac  
 Unit 2 VRH: 66.4 ac net  
 Unit 2 RMZ: 1.6 ac  
 Unit 3 VRH: 6.7 ac net  
 Unit 4 (SU-58 Pit): 0.9 ac  
 R/W: 2 ac



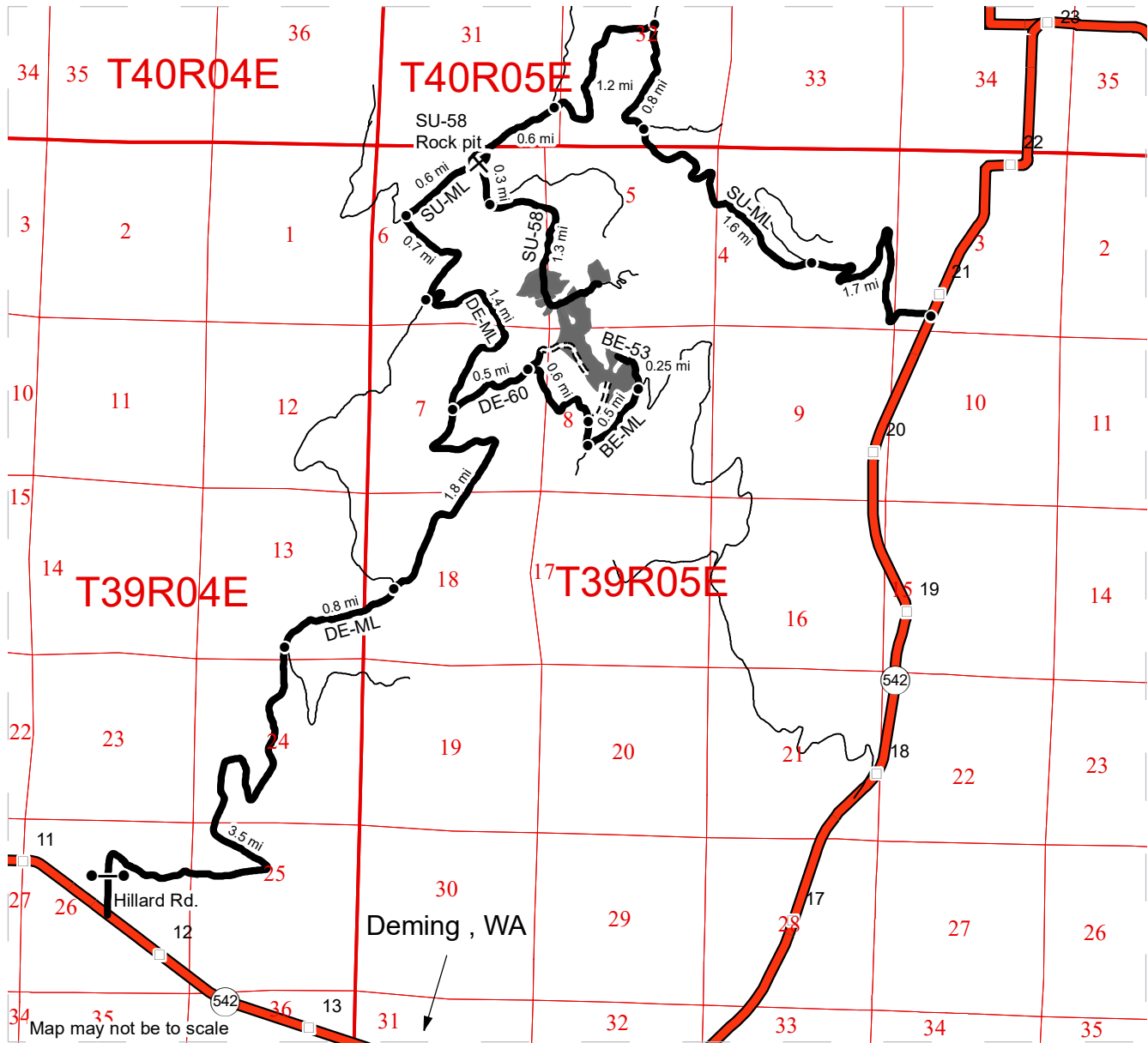
	Variable Retention Harvest		Sale Boundary Tags		Existing Roads
	Riparian Restoration		Special Mgmt Area		Required Pre-Haul Maintenance
	Leave Tree Area		Right of Way Tags		Optional Construction
	Riparian Mgt Zone		Timber Type Change		Streams
	Non-tradeable Leave Tree Areas		Stream Type		Stream Type Break
			Rock Pit		



# DRIVING MAP

**SALE NAME:** PINNACOAL  
**AGREEMENT#:** 30-102825  
**TOWNSHIP(S):** T39R5E  
**TRUST(S):** Scientific School (10)

**REGION:** Northwest Region  
**COUNTY(S):** Whatcom  
**ELEVATION RGE:** 2200-2800



Map may not be to scale

Deming, WA

- Timber Sale Unit
- Haul Route
- Other Roads
- Highway
- New Construction
- Milepost Markers
- Distance Indicator
- Gate (F1-3)
- X

 Rock Pit

**DRIVING DIRECTIONS:**

**Rock Pit:** Just before reaching MP 21 on Highway 542, turn west onto the SU-ML and continue for 1.7 miles. Veer left and continue for 1.6 miles. Continue straight for 0.8 miles and turn left to remain on the SU-ML. Continue for 1.8 miles before reaching the rock pit.

**North Access to Harvest Units:** From the rock pit, turn left onto the SU-58 and continue straight at the intersection in 0.3 miles. Continue for 0.75 miles until you reach the timber sale. Access to the sale area continues for 0.6 miles.

**South Access to Harvest Units:** at MP 11.5 on Highway 542, turn north onto Hillard Rd and continue on the DE-ML for 4.3 miles. Veer right to remain on the DE-ML, and continue for 1.8 miles. Turn right onto the DE-60 and continue for 0.5 miles. Keep straight to turn onto the DE-6005 and continue for 0.1 miles before reaching the point on new construction into the center of the sale area. From the intersection of the DE-60 and DE-6005, continue on the DE-60 for 0.6 miles before reaching the beginning of new construction of the DE-6012 that will access the southern portion of the sale area. From the beginning of construction of the DE-6012, continue south on the DE-60 for 0.1 miles and turn hard to the left to begin traveling on the BE-ML. Continue for 0.5 miles and veer left to begin on the BE-53. The timber sale will be on your left.





TIMBER NOTICE OF SALE

SALE NAME: Q COOK

AGREEMENT NO: 30-103037

AUCTION: September 27, 2022 starting at 10:00 a.m., COUNTY: Okanogan
Northeast Region Office, Colville, WA

SALE LOCATION: Sale located approximately 8 miles west of Okanogan, WA.

PRODUCTS SOLD AND SALE AREA: All green conifer species except for leave trees banded with blue paint and all standing snags excluding ponderosa pine, except for two standing snags per acre in Units 1, 2, 3, 4, 5, 6 and 7 bounded with white timber sale boundary tags.

All forest products above located on part(s) of Sections 11, 12, 13, 14, 23 and 24 all in Township 33 North, Range 24 East, W.M., containing 280 acres, more or less.

CERTIFICATION: This sale is certified under the Sustainable Forestry Initiative® program Standard (cert no: PwC-SFIFM-513)

ESTIMATED SALE VOLUMES AND QUALITY:

Table with columns: Species, Avg Ring DBH, Ring Count, Total MBF, and MBF by Grade (P, SM, 1S, 2S, 3S, 4S, 5S, 6S, UT). Rows include Ponderosa pine, Douglas fir, Larch, Lodgepole, and Sale Total.

MINIMUM BID: \$189,000.00 BID METHOD: Sealed Bids

PERFORMANCE SECURITY: \$37,800.00 SALE TYPE: Lump Sum

EXPIRATION DATE: October 31, 2024 ALLOCATION: Export Restricted

BID DEPOSIT: \$18,900.00 or Bid Bond. Said deposit shall constitute an opening bid at the appraised price.

HARVEST METHOD: Rubber tired skidder, Track skidder, and Ground based equipment. Falling and Yarding will not be permitted from March 1 to May 1 unless authorized in writing by the Contract Administrator due to spring breakup.

ROADS: 12.80 stations of required reconstruction. 593.41 stations of required prehaul maintenance. Road construction will not be permitted from November 15 to May 1 unless authorized in writing by the Contract Administrator due to frozen conditions and spring breakup. The hauling of forest products will not be permitted from March 1 to May 1 unless authorized in writing by the Contract Administrator due to spring breakup.

ACREAGE DETERMINATION

CRUISE METHOD: Acreage determined using GPS methods. Acreage shown above is net harvest acres in harvest units. Ponderosa pine: 8.0 - 17.5 inches dbh has a minimum top of 5.6 inch dib. All other species: 7.0 - 17.5 inches dbh has minimum top of 4.6 inch dib. All species



TIMBER NOTICE OF SALE

17.6 inches and greater dbh have a minimum top dib of 40% of dob at 16 feet or a 6 inch top whichever is greater.

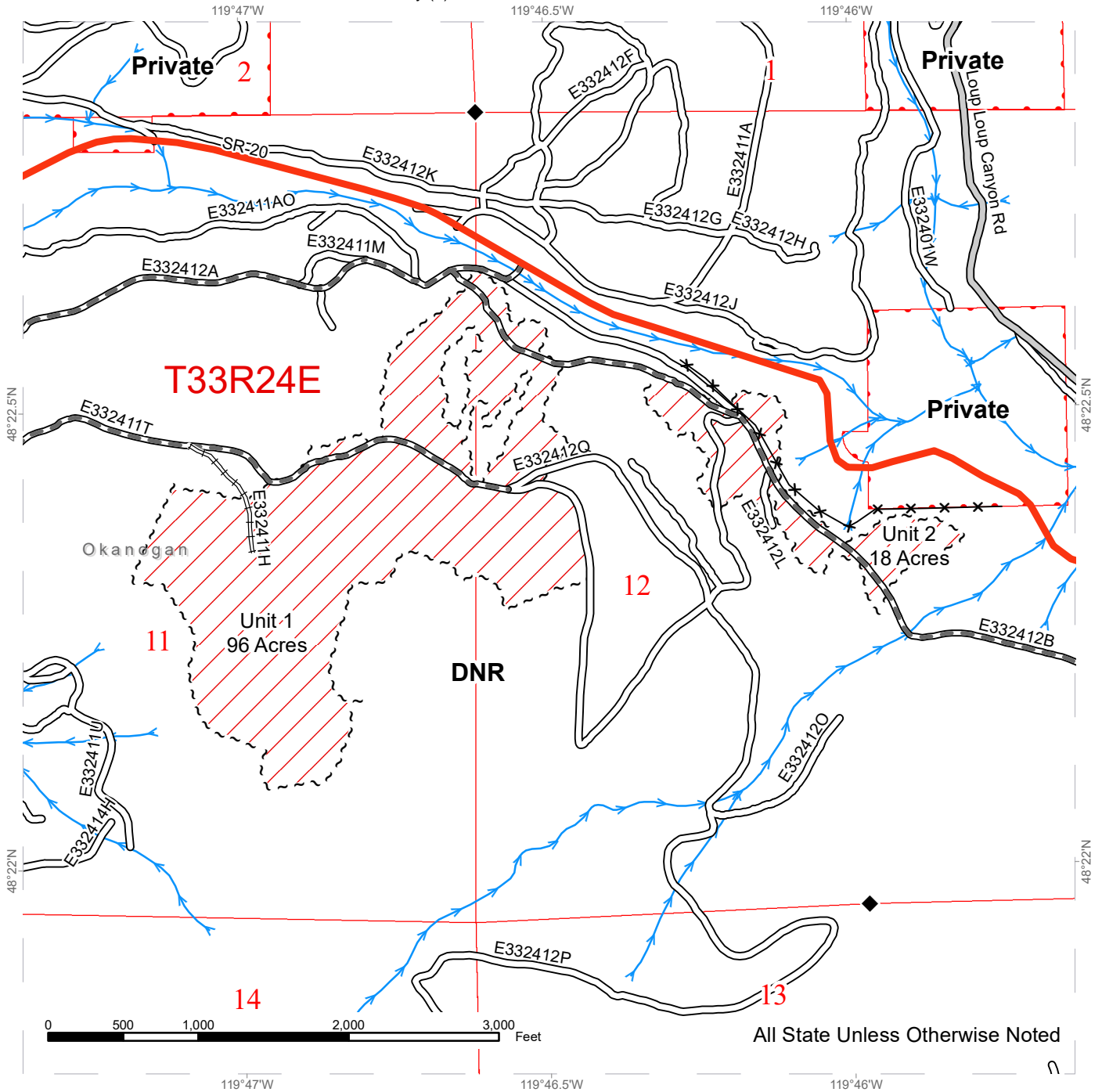
**FEES:** \$38,284.00 is due on day of sale. \$9.00 per MBF is due upon removal. These are in addition to the bid price.

**SPECIAL REMARKS:** Locked gates restricts access to Units 3, 4, 5, 6, and 7. Contact the Northeast Region Office at (509) 684-7474 for access.

# TIMBER SALE MAP

**SALE NAME:** Q COOK  
**AGREEMENT #:** 30-103037  
**TOWNSHIP(S):** T33R24E  
**TRUST(S):** Common School and Indemnity (3)

**REGION:** Northeast Region  
**COUNTY(S):** Okanogan  
**ELEVATION RGE:** 2320-3440



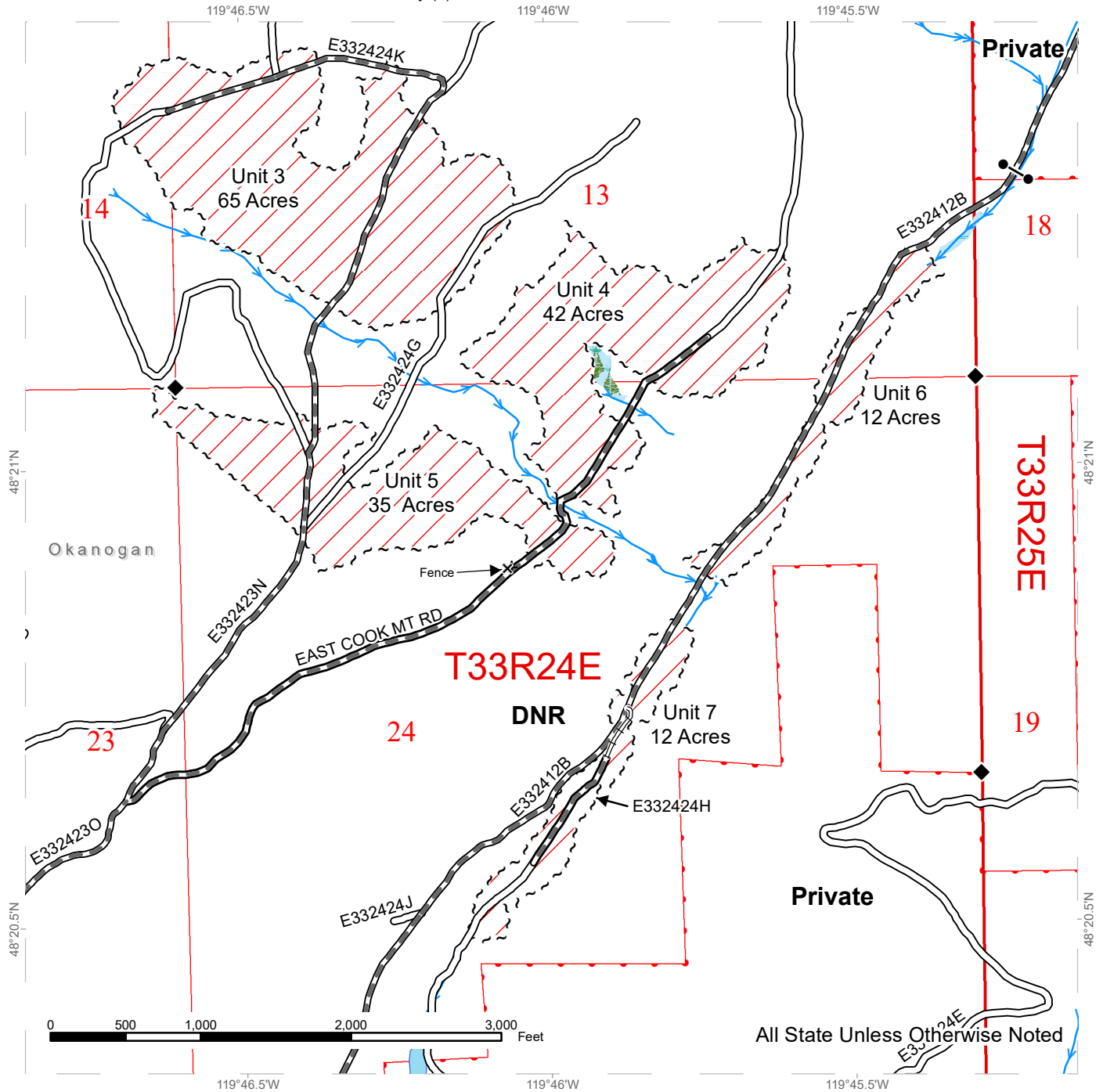
Public Land Survey Sections	County Road	Streams
DNR Managed Lands	Existing Roads	Survey Monument
Variable Retention Harvest	Required Pre-Haul Maintenance	Fence
Sale Boundary Tags	Required Reconstruction	Highway



# TIMBER SALE MAP

**SALE NAME:** Q COOK  
**AGREEMENT #:** 30-103037  
**TOWNSHIP(S):** T33R24E  
**TRUST(S):** Common School and Indemnity (3)

**REGION:** Northeast Region  
**COUNTY(S):** Okanogan  
**ELEVATION RGE:** 2320-3440



All State Unless Otherwise Noted

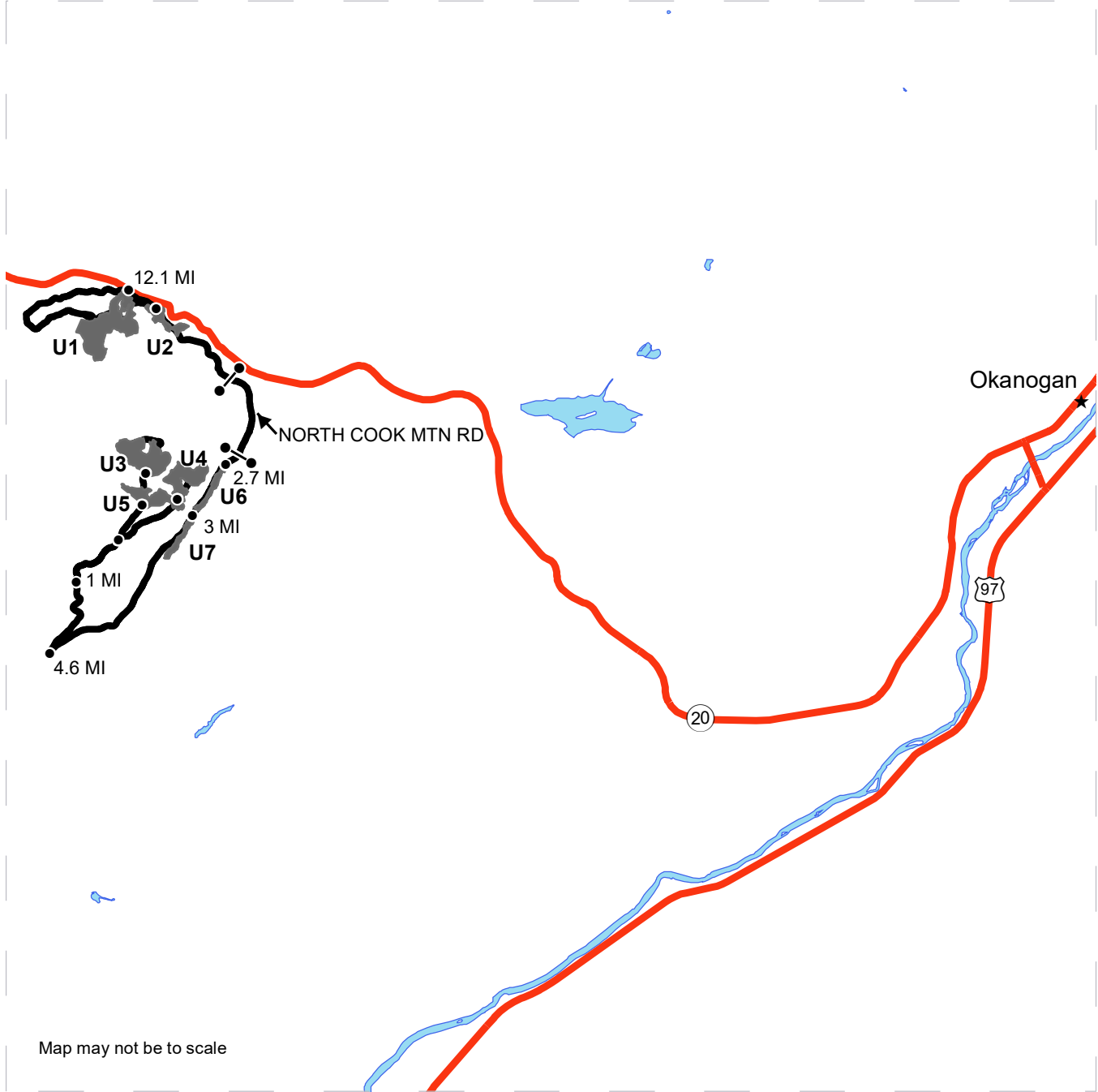
Public Land Survey Sections	Existing Roads	Streams
DNR Managed Lands	Required Pre-Haul Maintenance	Survey Monument
Variable Retention Harvest	Required Reconstruction	Gate
Wetlands - Non-forested	Fence	
Forested Wetland		
Sale Boundary Tags		









# DRIVING MAP

**SALE NAME:** Q COOK TS  
**AGREEMENT#:** 30-103037  
**TOWNSHIP(S):** T33R24E  
**TRUST(S):** Common School and Indemnity (3)

**REGION:** Northeast Region  
**COUNTY(S):** Okanogan  
**ELEVATION RGE:** 2320-3440



Map may not be to scale

	Timber Sale Unit
	Haul Route
	Highway
	Distance Indicator
	Gate
	Town

**DRIVING DIRECTIONS:**

From the south end of Okanogan, travel 12.1 miles southwest on State Highway 20 to the Junction of North Cook Mtn Road. Unit 1: Turn left onto North Cook Mtn Road off of State Highway 20, cross the cattle guard and take a right and travel 250 feet and turn left arriving at the north end of Unit 1. Unit 2: Continue on North Cook Mtn Road heading east past Unit 1 for approximately 0.25 miles to arrive at Unit 2. Units 3, 4, and 5: Continue past Unit 1 on North Cook Mtn Road heading south for 4.6 miles, then turn right on the E3322426E road. Travel north on the E332426E road for 1 mile, then turn right on the E332423O road. Travel 0.6 miles to the E332423N and stay straight for 0.6 miles to Unit 3. For Unit 4, travel north 0.6 miles on the East Cook Mtn Road off of the E332423O road. For Unit 5 travel 0.4 miles north on the E332423N road off of the E332423O road. Units 6 and 7: From Unit 1, travel south on the North Cook Mtn Road for 2.7 miles to arrive at Unit 6. Travel 3 miles south from Unit 1 on the North Cook Mtn Road to arrive at Unit 7.

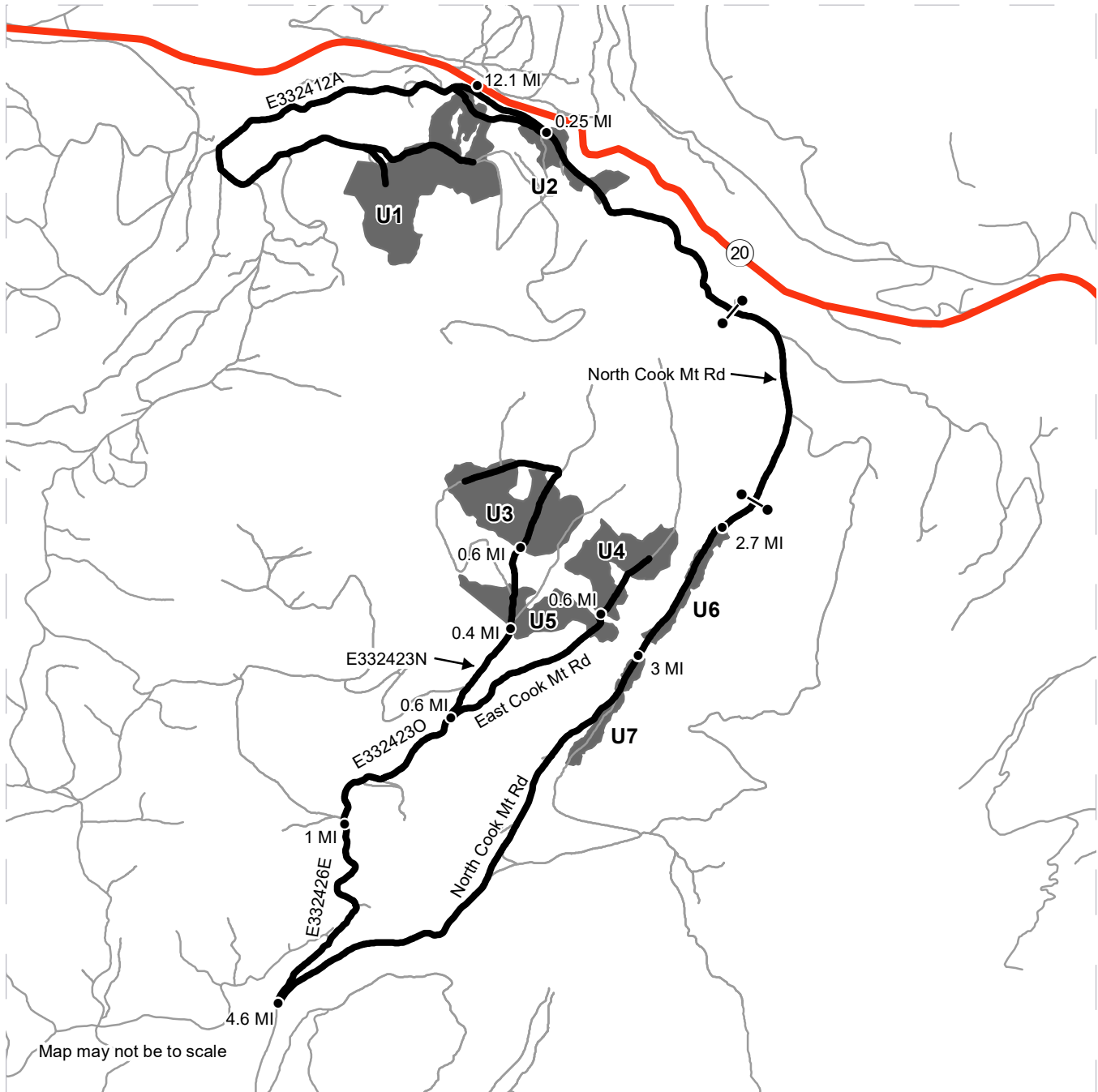




# DRIVING MAP

**SALE NAME:** Q COOK TS  
**AGREEMENT#:** 30-103037  
**TOWNSHIP(S):** T33R24E  
**TRUST(S):** Common School and Indemnity (3)

**REGION:** Northeast Region  
**COUNTY(S):** Okanogan  
**ELEVATION RGE:** 2320-3440



Map may not be to scale

	Timber Sale Unit
	Haul Route
	Other Route
	Highway
	Distance Indicator
	Gate

**DRIVING DIRECTIONS:**

From the south end of Okanogan, travel 12.1 miles southwest on State Highway 20 to the Junction of North Cook Mtn Road. Unit 1: Turn left onto North Cook Mtn Road off of State Highway 20, cross the cattle guard and take a right and travel 250 feet and turn left arriving at the north end of Unit 1. Unit 2: Continue on North Cook Mtn Road heading east past Unit 1 for approximately 0.25 miles to arrive at Unit 2. Units 3, 4, and 5: Continue past Unit 1 on North Cook Mtn Road heading south for 4.6 miles, then turn right on the E332426E road. Travel north on the E332426E road for 1 mile, then turn right on the E332423O road. Travel 0.6 miles to the E332423N and stay straight for 0.6 miles to Unit 3. For Unit 4, travel north 0.6 miles on the East Cook Mtn Road off of the E332423O road. For Unit 5 travel 0.4 miles north on the E332423N road off of the E332423O road. Units 6 and 7: From Unit 1, travel south on the North Cook Mtn Road for 2.7 miles to arrive at Unit 6. Travel 3 miles south from Unit 1 on the North Cook Mtn Road to arrive at Unit 7.



**State of Washington  
Department of Natural Resources**

**SEALED BID FORM**

Sale Name \_\_\_\_\_ Agreement Number \_\_\_\_\_

\_\_\_\_\_ hereby submits the following bid for timber.  
(Print full, legal company name)

\_\_\_\_\_  
(Street address, City, State, Zip Code)

\_\_\_\_\_  
(Phone Number)

---

---

**Lump Sum Bid** (Not Including Fees)      \$ \_\_\_\_\_ **For Total Sale**

**Weight Scale Sale Bid** (Not Including Fees)      \$ \_\_\_\_\_ / **Ton**

**Scribner Scale Sale Bid** (Not Including Fees)      \$ \_\_\_\_\_ / **MBF For Biddable Species**

---

---

**BID DEPOSIT**

**Bid Deposit Amount:** \$ \_\_\_\_\_

**Bid Deposit Type:**

- Cash, certified check, cashiers check, or money order
- Per Sale Bid Bond
- Statewide Bid Bond, Number \_\_\_\_\_

---

---

**Within 30 days of confirmation date** the successful bidder agrees to furnish Performance Security acceptable to the State in the amount specified on the Notice of Sale. Performance Security must guarantee performance of all provisions of the contract and payment of any damages caused by operations under the contract or resulting from the successful bidders noncompliance with any rule or law.

Bidder's Warranty and Bid Signature

*By signing and submitting this bid as an offer to purchase forest products from the State, the Bidder hereby warrants to the State that they have had an opportunity to fully inspect the sale area and the forest products being sold. Bidder further warrants to the State that they enter this bid based upon their own judgments of the value of the forest products, formed after their own examination and inspection of both the timber sale area and the forest products being sold. Bidder also warrants to the State that they enter this bid without any reliance upon the volume estimates, acreage, appraisals, pre-bid documentation, or any other representation by the Washington State Department of Natural Resources.*

\_\_\_\_\_ Date \_\_\_\_\_  
(Signature of Authorized Representative submitting this bid)

\_\_\_\_\_  
(Print name and title of Authorized Representative submitting this bid)

**Note: all sales are subject to confirmation by the Commissioner of Public Lands (Refer 79.15.120)**

## Instructions For Completing Sealed Bid Form

---

*All bids submitted for the purchase of forest products being sold by the Washington State Department of Natural Resources must have an original signature on behalf of the person or entity submitting the bid, and must be on the form provided in this booklet or a photocopy thereof. The DNR will not accept bids that are not signed, and will not accept bids that are not on the current, approved bid form. All appropriate blanks on bid form must be completed including the bid bond number if the bidder is relying upon a bid bond for bid deposit.*

*For more specific information, contact the appropriate region office.*

---

### In-Person Bids

- A. Sealed bids must be in auction box before 10:00 a.m. on the day of auction at the location specified in the Timber Notice of Sale.
  - B. Sealed bids must be submitted in an envelope with the name of the sale, the bidder's name and the contract number clearly written on the outside of the envelope. The full legal name and business address of the bidder must be inserted where indicated on the form, and must be on the bid bond and timber sale contract. The bid form must be signed by an authorized representative. When a bidder has more than one person authorized to bid, documentation of those persons with signature authority for bidding must accompany the bid or be on file at the region office. Sealed bid envelopes are available at all region offices. One bid per envelope.
  - C. Sealed bid envelopes **must** contain a completed bid form and a bid deposit.
  - D. Sealed bid envelopes **may** contain a check for the Initial Deposit amount and a check for fees.
- 

### Mailed Bids

- A. Bids that are mailed are required to have printed on the outside: "DO NOT OPEN UNTIL SALE DATE. SEALED BID ENCLOSED". The sealed bid envelope(s) will be enclosed inside the mailed-in envelope. Mailed bids must be submitted in an envelope with the name of the sale, the bidder's name and the agreement number clearly written on the outside of the envelope. The full legal name and business address of the bidder must be inserted where indicated on the form, and must be the same on the bid bond and timber sale contract. The Sealed Bid Form must be signed by an authorized representative. When a bidder has more than one person authorized to bid, documentation of those persons with signature authority for bidding must accompany the bid or be on file at the region office. Mail-in envelopes are available at all region offices. One bid per mailed-in envelope.
  - B. Bids that are mailed will be accepted up to 4:30 p.m. the last business day before the auction by the region office in which the sale is located. Bidders assume the risk for the method of delivery. The DNR assumes no responsibility for any delays caused by any delivery service.
  - C. Sealed bid envelopes **must** contain a completed bid form and a bid deposit.
  - D. Sealed bid envelopes **may** contain a check for the Initial Deposit amount and a check for fees.
- 

### Initial Deposit:

**Lump Sum Sales** - Initial Deposit must equal 10% of the total bid submitted.  
(25% if the bidder is a defaulter as defined under WAC 332-140-300)

**Weight Scale Sales** - Initial Deposit must equal 10% of the bid per ton multiplied by the total sale estimated tonnage. (25% if the bidder is a defaulter as defined under WAC 332-140-300)

**Scribner MBF Scale Sales** - Initial Deposit must equal 10% of the bid per MBF multiplied by the total sale MBF. (25% if the bidder is a defaulter as defined under WAC 332-140-300)

**State of Washington  
Department of Natural resources**

**STATEWIDE BID BOND**

Bond Number \_\_\_\_\_

\_\_\_\_\_ of \_\_\_\_\_,  
(Principal's Name) (City, State)

hereinafter called PRINCIPAL, and \_\_\_\_\_ hereinafter called  
SURETY,

a corporation organized under the laws of the State of \_\_\_\_\_, and authorized to transact surety business in the State of Washington, as SURETY, are held and firmly bound jointly and severally to the State of Washington, Department of Natural Resources, hereinafter called the STATE, in the sum of \$150,000.00 Dollars, lawful money of the United States of America. The PRINCIPAL binds itself, its heirs, executors, administrators, successors, and assigns, and the SURETY binds itself, its successors, and assigns, all jointly and severally.

This bond shall be governed by the laws of the State of Washington. In the event of a lawsuit involving this bond, a venue shall be proper only in Thurston County Superior Court.

Signed, sealed and dated this \_\_\_\_\_ day of \_\_\_\_\_, \_\_\_\_\_ .  
(month) (year)

This statewide bid bond may be used for bidding between the following dates:

Starting:

Ending:

**It Is Hereby Understood and Agreed:**

If PRINCIPAL is an apparent high bidder, PRINCIPAL shall before 4:30 p.m ., on day of sale, pay to the STATE the amount of the initial deposit in the form of a certified check, cashier's check, bank draft, cash or money order, then this agreement shall be void for the sale on which the payment is made; otherwise, it will remain in force.

SURETY will make payment to the STATE within ten days after demand by the STATE if the PRINCIPAL shall fail to make timely payment as described above.

The SURETY may cancel this bond by sending a written notice to the STATE, not less than forty-five days before a cancellation date; liability shall terminate as to acts or omissions of the PRINCIPAL that occur after the cancellation date.

The PRINCIPAL and the SURETY executed this bond on the date first mentioned.

**Principal:** (Above named)

Signature: \_\_\_\_\_

Name: \_\_\_\_\_

Title: \_\_\_\_\_

Address: \_\_\_\_\_

City: \_\_\_\_\_  
State & Zip Code

**Surety:** (Above named)

Signature: \_\_\_\_\_

Name: \_\_\_\_\_

Title: \_\_\_\_\_

Address: \_\_\_\_\_

City: \_\_\_\_\_  
State & Zip Code

**Surety:** (Local Office of Authorized agent)

Signature: \_\_\_\_\_

Name: \_\_\_\_\_

Title: \_\_\_\_\_

Address: \_\_\_\_\_

City: \_\_\_\_\_  
State & Zip Code

Notary or Company Seal in Space Above

## **Instructions for Completing Timber Sale Statewide Bid Bond**

- A. This form is authorized for use as bid guaranty to qualify for bidding on Washington State Department of Natural Resources timber sales.
- B. The Statewide Bid Bond may be used as bid guaranty on more than one timber sale.
- C. The full legal name and business address of the PRINCIPAL must be inserted where indicated and must be the same as will appear on the bidding record and timber sale contract. The bond must be signed by an authorized person. Additionally, the name must be typed or printed below the signature and title must be shown.
- D. The full legal name and business address of the SURETY must be inserted where indicated. The bond must be signed by an authorized person. Additionally, the name must be typed or printed below the signature and the title must be shown.
- E. If the SURETY does not have a Washington State office or resident agent, but is authorized to transact surety business in the State of Washington as SURETY, it may leave this signature block blank.
- F. This form must be received by the Department of Natural Resources, Product Sales & Leasing Division, PO BOX 47016, Olympia, Washington, 98504-7016, ten days in advance of the auction.
- G. **The State reserves the right to reject *incomplete or incorrect* bid bond forms, making such forms unacceptable as bid guaranty.**



**State of Washington  
Department of Natural Resources**

**Timber Sale Per Sale Bid Bond**

Bond Number \_\_\_\_\_

\_\_\_\_\_ of \_\_\_\_\_, hereinafter called PRINCIPAL, and \_\_\_\_\_, hereinafter called SURETY, a corporation organized under the laws of the State of \_\_\_\_\_ and authorized to transact surety business in the State of Washington, as SURETY, are held and firmly bound jointly and severally to the State of Washington, Department of Natural Resources, hereinafter called the STATE, in the sum of \$ \_\_\_\_\_ Dollars, lawful money of the United States of America. The PRINCIPAL binds itself, its heirs, executors, administrators, successors, and assigns, and the SURETY binds itself, its successors, and assigns, all jointly and severally.

This bond shall be governed by the laws of the State of Washington. In the event of a lawsuit involving this bond, venue shall be proper only in Thurston County Superior Court.

Signed, sealed, and dated this \_\_\_\_\_ day of \_\_\_\_\_, 20 \_\_\_\_\_.

**BID IDENTIFICATION:**

SALES NAME(S)	REQUIRED DEPOSIT	AGREEMENT NUMBER(S)

**DATE OF BID:** \_\_\_\_\_

**It Is Hereby Understood and Agreed:**

If PRINCIPAL is the high bidder on the sale(s) identified above and, within ten (10) days of the day of sale, transmits cash, certified check, cashier's check, bank draft or money order, payable to the STATE, in the amount of the bid guaranty required by the terms of the Notice of Sale, *then* this obligation shall be void; *otherwise*, it shall remain in force.

SURETY will make payment to the STATE within ten (10) days after demand by the STATE whenever the PRINCIPAL shall fail to make timely payment as described above.



IN WITNESS WHEREOF: the PRINCIPAL and the SURETY have caused this bond to be executed on the date first mentioned.

**SECOND OFFICER:**

Signature: \_\_\_\_\_

Name: \_\_\_\_\_

Title: \_\_\_\_\_

**PRINCIPAL:** (Above Named)

Signature: \_\_\_\_\_

Name: \_\_\_\_\_

Title: \_\_\_\_\_

**SURETY:** (Local Office of Authorized Agent)

Signature: \_\_\_\_\_

Name: \_\_\_\_\_

Title: \_\_\_\_\_

Address: \_\_\_\_\_

City: \_\_\_\_\_

State & Zip: \_\_\_\_\_

**SURETY:** (Above Named)

Signature: \_\_\_\_\_

Name: \_\_\_\_\_

Title: \_\_\_\_\_

Address: \_\_\_\_\_

City: \_\_\_\_\_

State & Zip \_\_\_\_\_

**NOTARY OR COMPANY SEAL IN THE SPACE ABOVE**

## **Instructions for Completing Timber Sale Per Sale(s) Bid Bond**

- A. This form is authorized for use as bid guaranty to qualify for bidding on Washington State Department of Natural Resources timber sales.
- B. The Timber Sale Per Sale Bid Bond may be used as bid guaranty on more than one timber sale auction held the same date at the same location.
- C. The full legal name and business address of the PRINCIPAL must be the same as will appear on the bidding record and timber sale contract. The bond must be signed by an authorized person, the name typed or printed, and title shown. If PRINCIPAL is a corporation, a second officer must sign in the space to the left of the signature of the officer executing for the PRINCIPAL.
- D. The full legal name and business address of the SURETY must be inserted where indicated. The bond must be signed by an authorized person. Additionally, the name must be typed or printed below the signature and the title must be shown. If this person is not an officer of the corporation, evidence of authority must be submitted.
- E. If the SURETY does not have a Washington State office or resident agent, but is authorized to transact surety business in the State of Washington as Surety, it may leave the local office signature block blank.
- F. The date of the bid bond must not be later than the auction date.
- G. **The State reserves the right to reject incomplete or *incorrect* bid bond forms, making such forms unacceptable as guaranty.**



STATE OF WASHINGTON  
DEPARTMENT OF NATURAL RESOURCES

**LOG SORT SEALED BID FORM**

Sale Name \_\_\_\_\_ Agreement Number \_\_\_\_\_ Date \_\_\_\_\_

\_\_\_\_\_ hereby submits the following bid for delivered logs.  
(Print Company Name)

\_\_\_\_\_ Telephone Number \_\_\_\_\_  
(Print Name Authorized Company Representative) (Contact for bid result notification)

\_\_\_\_\_  
(Street Address)

\_\_\_\_\_  
(City, State and Zip)

Agreement Number	Sort Number	<u>Delivered Logs Bid Amount</u> (fill in one only)	
		\$ /MBF	\$ /TON

**Bid Deposit Amount** \$ \_\_\_\_\_

- Bid Deposit Type:**
- Cash, Certified Check, Cashiers Check, or Money Order
  - Per Sale Bid Bond
  - Statewide Bid Bond, Number \_\_\_\_\_

The successful bidder agrees to furnish payment security acceptable to the State in the amount as described in clause P-041 of the Purchaser's contract prior to log delivery and at a date to be determined by the State.

**Bidder's Warranty and Bid Signature**

*By signing and submitting this bid as offer to purchase forest products from the State, the Bidder hereby warrants to the State that they have had an opportunity to fully inspect the sale area and the forest products being sold. Bidder further warrants to the State that they enter this bid based solely upon their own judgment of the value of the forest products, formed after their own examination and inspection of both the timber sale area and the forest products being sold. Bidder also warrants to the State that they enter this bid without any reliance upon the volume estimates, acreage estimates, appraisals, pre-bid documentation, or any other representation by the State Department of Natural Resources.*

\_\_\_\_\_  
(Signature of Authorized Representative submitting this bid)

\_\_\_\_\_  
(Date of Signature)

\_\_\_\_\_  
(Print name and title of Authorized Representative submitting this bid)

**NOTES:** A separate bid form is required for each log sort bid and must be delivered in a separate envelope. Photocopies of this bid form may be used. Each photocopy must have original signatures. Final contract award is contingent upon the State's haul cost analysis. Actual haul route may vary and is subject to change at the State's discretion. All sales are subject to confirmation by the Commissioner of Public Lands as per RCW 79.15.100.

**LOG SORT SEALED BID SUPPLEMENTAL INFORMATION FORM**\_\_\_\_\_  
(Print Company Name)\_\_\_\_\_  
(Sale Name)\_\_\_\_\_  
(Agreement Number)\_\_\_\_\_  
(Sort Number)\_\_\_\_\_  
(email: optional for DNR production report distribution)**Log Manufacturing Specifications:****Sawlog and Peeler sorts:** Enter at least one preferred log length including trim for each log length range below.**Pole sorts (Distribution):** Enter three or more lengths. Attach preferred manufacturing information.**Pole sorts (Transmission):** Enter six or more lengths. Attach preferred manufacturing information.**Tonnage sorts:** See bid form instructions for required log lengths. Enter additional custom lengths as desired.

<b>Log Length Ranges</b>	<b>Bidder's Preferred Log Lengths</b>
<b>16 ft. through 20 ft.</b>	
<b>22 ft. through 30 ft.</b>	
<b>32 ft. through 40 ft.</b>	
<b>Distribution Poles – 35 ft. through 55 ft.</b>	
<b>Transmission Poles – 60 ft.+</b>	

**Log Delivery Information:****1) Designate the point of delivery and address (must be a street address)**\_\_\_\_\_  
(Location Name)\_\_\_\_\_  
(Street Address)\_\_\_\_\_  
(City, State and Zip)**2) Designate the state approved Scaling and Weighing facilities closest to the point of delivery as needed.****Scaling Location Information****Weighing Location Information**\_\_\_\_\_  
(Scaling Location Name)\_\_\_\_\_  
(Weighing Location Name)\_\_\_\_\_  
(Third Party Scaling Organization)\_\_\_\_\_  
(Weighing Location Owner)\_\_\_\_\_  
(Scaling Location Street Address)\_\_\_\_\_  
(Weighing Location Street Address)\_\_\_\_\_  
(Scaling Location City, State and Zip)\_\_\_\_\_  
(Weighing Location City, State and Zip)

**Final contract award is contingent upon the State's haul cost analysis. Actual haul route may vary and is subject to change at the State's discretion. Additional terms or conditions requested by the bidder on or attached to the Log Sort Sealed Bid or Supplemental Information Forms are informational only and non-binding.**

## **Instructions for Completing the Log Sort Sealed Bid and Supplemental Information Forms.**

All bids submitted for the purchase of forest products being sold by the Washington State Department of Natural Resources must have an original signature on behalf of the person or entity submitting the bid, and must be on the form(s) provided in this booklet or a photocopy thereof. The DNR will not accept bids that are not signed, and will not accept bids that are not on the current, approved bid form. All appropriate blanks including Agreement Number, Sort Number, Bid amount (per mbf or ton as appropriate for the sort), Bid deposit amount and type. Signatures and date on bid form must be completed including the bid bond number if bidder is relying upon a bid bond for bid deposit.

Bids shall not be accepted if a completed '**Log Sort Sealed Bid Supplemental Information Form**' is not included with the approved '**Log Sort Sealed Bid Form**'.

**Required log lengths for tonnage sorts:** Preferred log lengths for tonnage sawlog sorts shall include the following plus any additional lengths identified on the Bid Supplemental Information form:

<b>Species Type</b>	<b>Preferred Lengths</b>
Conifer Sorts	16', 20', 24', 26', 32', 40'
Hardwood Sorts	18', 20', 26', 28', 30', 36', 38', 40'

For more specific information, contact the appropriate region office.

### **In-Person Bids**

- A. Sealed bids must be in auction box or auction envelope before 10:00 a.m. on the day of sale at the location specified in the notice of sale.
- B. Sealed bids must be submitted in an envelope with the name of the sale, the bidder's name and the contract agreement number clearly written on the outside of the envelope. The full legal name and business address of the bidder must be inserted where indicated on the form, and must be the same as the name on the bid bond and timber sale contract. The bid form must be signed by an authorized person. When a bidder has more than one person authorized to bid, then documentation of those persons with signature authority for bidding must accompany the bid or be on file at the region office. Sealed bid envelopes are available at all region offices. One bid per envelope.
- C. Sealed bid envelopes must contain the following:
  1. A completed '**Log Sort Sealed Bid Form**';
  2. A completed '**Supplemental Information Form**' and;
  3. A bid deposit

### **Mailed Bids**

- A. Mail-in bid envelopes are required to have printed on the outside: "DO NOT OPEN UNTIL SALE DATE. SEALED BID ENCLOSED." The sealed bid envelope(s) will be enclosed inside the mailed-in envelope. Mailed bids must be submitted in an envelope with the name of the sale, the bidder's name and the agreement number clearly written on the outside of the envelope. The full legal name and business address of the bidder must be inserted where indicated on the form, and must be the same on the bid bond and timber sale contract. The bid form must be signed by an authorized person. When a bidder has more than one person authorized to bid, then documentation of those persons with signature authority for bidding must accompany the bid or be on file at the region office. Mail-in envelopes are available at all region offices. One bid per mailed-in envelope.
- B. Mail-in or otherwise delivered bids will be accepted up to 4:30 p.m. the last business day before the auction by the region office in which the sale is located. Bidders assume the risk for the method of delivery they chose. The DNR assumes no responsibility for any delays caused by any delivery service.
- C. Sealed bid envelopes must contain the following:
  1. A completed '**Log Sort Sealed Bid Form**';
  2. A completed '**Log Sort Sealed Bid Supplemental Information Form**' and;
  3. A bid deposit



# Department of Natural Resources Region Offices

**Olympia Headquarters**  
 1111 Washington St SE  
 MS 47000  
 Olympia, WA 98504-7000  
 (360) 902-1000  
[www.dnr.wa.gov](http://www.dnr.wa.gov)

**Product Sales & Leasing Division**

1111 Washington St SE  
 MS 47014  
 Olympia, WA 98504-7014  
 (360) 902-1600

**South Puget Sound Region**  
 950 Fairman Ave N  
 Enumclaw, WA 98022-9282  
 (360) 825-1631

**Pacific Cascade Region**

601 Bond Road  
 PO Box 280  
 Castle Rock, WA 98611-0280  
 (360) 577-2025

**Southeast Region**

713 Bowers Road  
 Ellensburg, WA 98926-9301  
 (509) 925-8510

**Northwest Region**

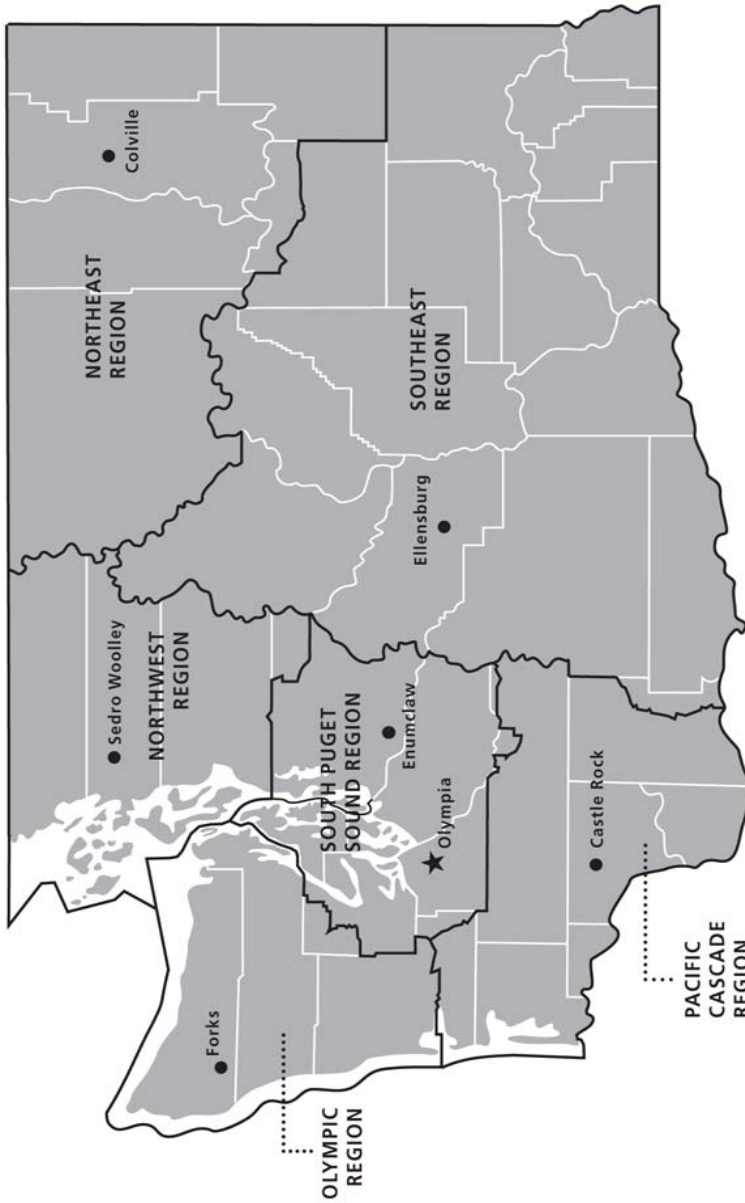
919 N Township St  
 Sedro Woolley,  
 WA 98284-9384  
 (360) 856-3500

**Olympic Region**





411 Tillicum Lane  
 Forks, WA 98331-9271  
 (360) 374-2800

**Northeast Region**

225 S Silke Road  
 PO Box 190  
 Colville, WA 99114-0190  
 (509) 684-7474



**DNR REGIONS**

-  DNR Region Boundaries
-  County Boundaries
-  DNR Region Office
-  Olympia Headquarters



WASHINGTON STATE DEPT OF  
**NATURAL RESOURCES**



For more information about how public lands are managed visit DNR's web page at [www.dnr.wa.gov](http://www.dnr.wa.gov)

Fire, Burn Ban Information and Region Offices  
 Toll Free: 1-800-527-3305 General TTY: 7-1-1







WASHINGTON STATE DEPT OF  
**NATURAL  
RESOURCES**

1111 WASHINGTON ST SE  
MS 47014  
OLYMPIA WA 98504-7014

[www.dnr.wa.gov](http://www.dnr.wa.gov)

For alternate formats  
of this document,  
Call (360) 902-1000  
TRS: 7-1-1

PRINTED IN THE USA ON RECYCLED PAPER

