

An aerial photograph of a forest with a dirt road running through it. The forest is dense with green trees, and the road is a light brown color. The text is overlaid on a semi-transparent green rectangle in the center of the image.

2019-2021 Treatment Highlights

DNR Forest Hazard
Reduction Capital

Breakdown of 2019-21 funds

\$14.2M obligated, \$5.979 re-appropriated

State Lands Forest Health Restoration: \$2.3M*

**Private Lands/Firewise/Fire Adapted
Communities: \$4.6M***

Federal Lands Investments (non-GNA): \$1.6M*

Federal Lands - GNA: \$2.0M*

Landscape Collaborative Grant Program: \$1.6M*

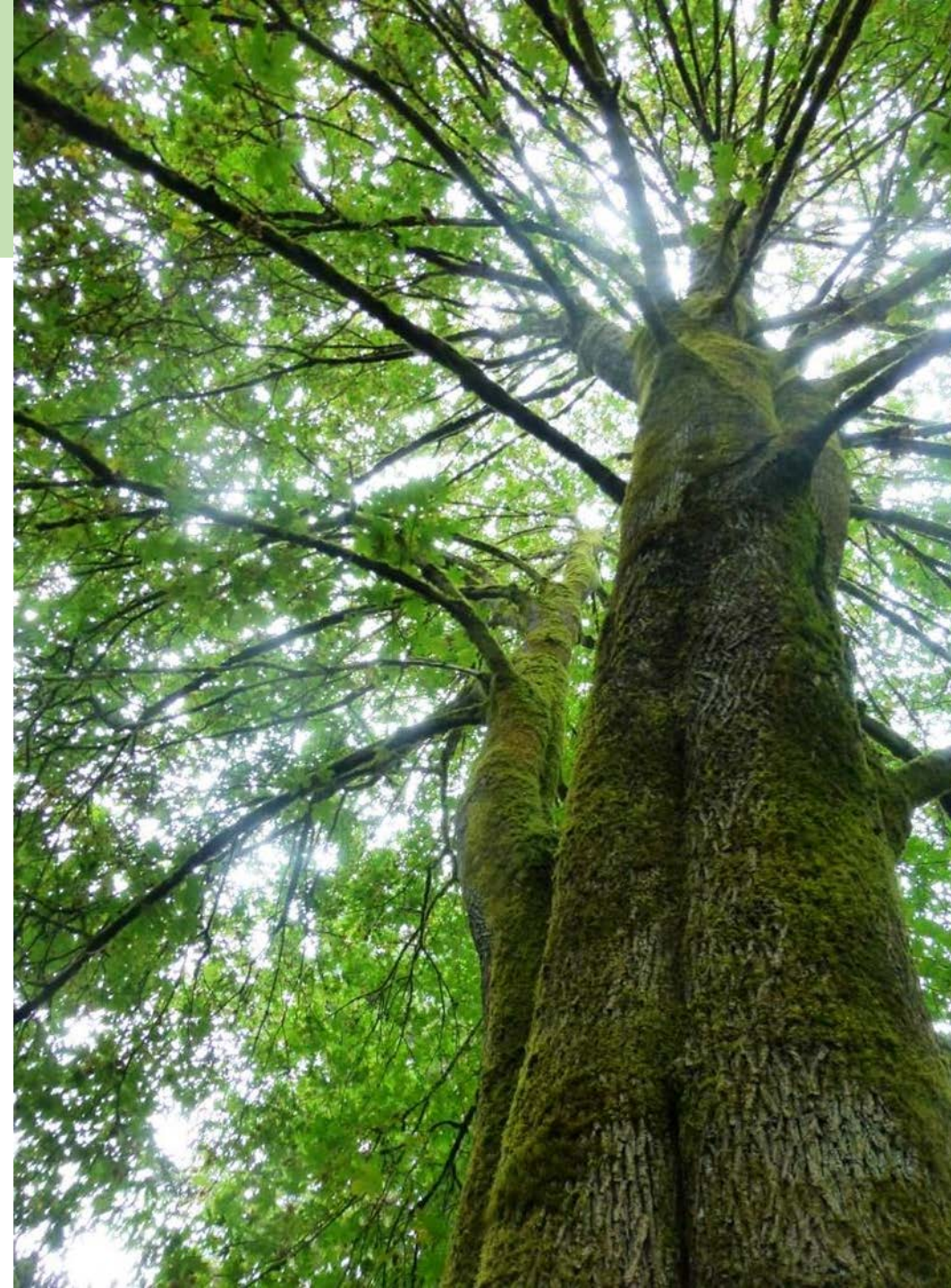
Forest Health Monitoring: \$700K*

Forest Health Tracking System: \$350K

Prescribed Fire: \$500k*

Strategic Investments: \$550k

** Items that include a portion of funds re-appropriated to spend in 2021-2023*



Program Highlights:

Deliverables are integrated with broader partner report-outs

Prescribed Fire: \$500k*

- 20 acres near Roslyn (10 on private, 10 on Roslyn Urban Forest)
- TRES support to burns in NE:
 - 85 acres on the Kalispell Reservation, TRES supplied the Burn Boss and resources.
 - 3 additional burns in spring 2021: 2 with NPS, 1 with BLM
- Prescribed fire burn plans to be written on 5 NE WA sites (tribal, non-profit, and private).
- DNR staff to assist with development of Certified Prescribed Burn Manager program.

* Items that include a portion of funds re-appropriated to spend in 2021-2023



Program Highlights:

Deliverables are integrated with broader partner report-outs

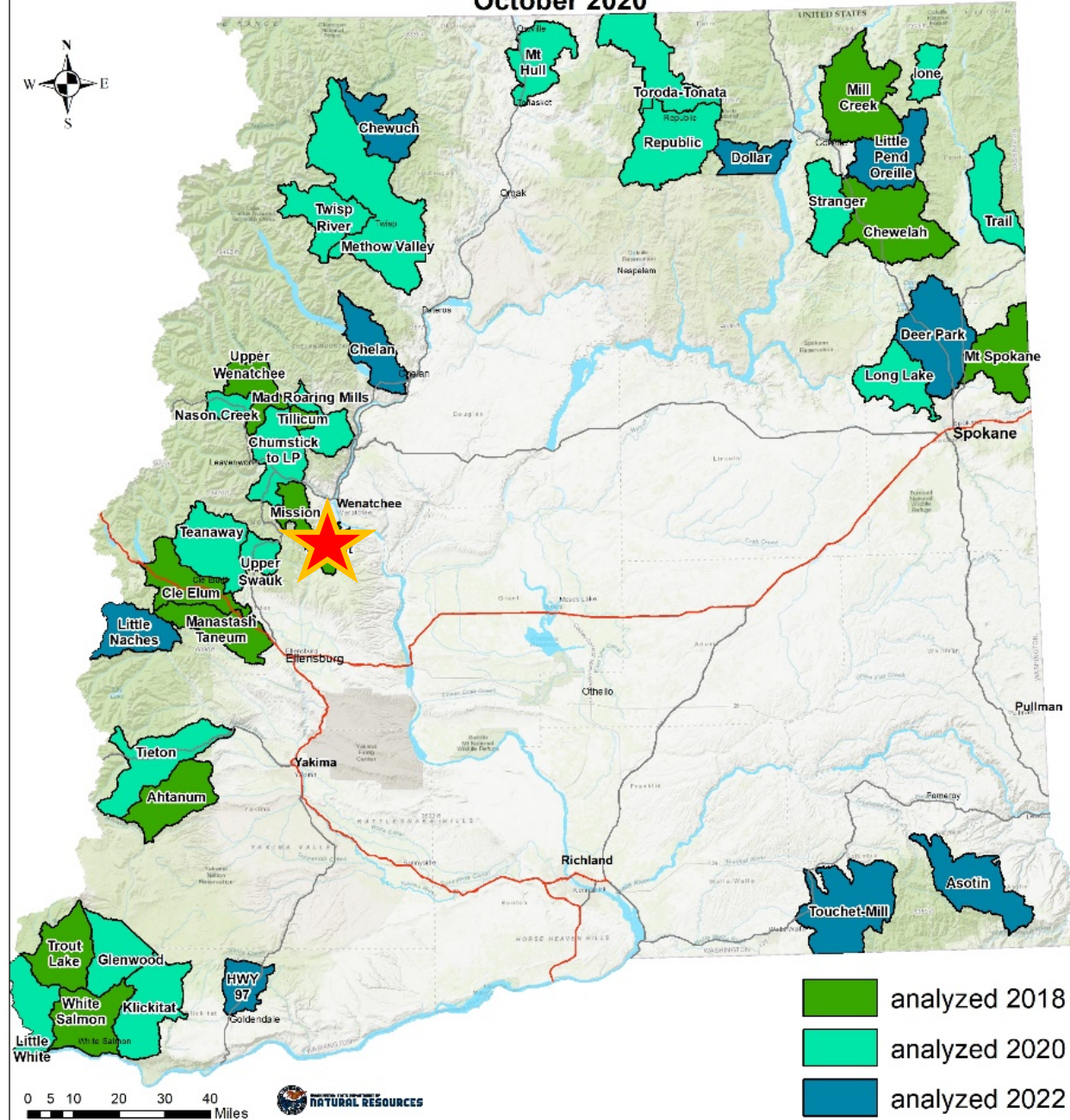
Federal Lands - GNA: \$2.0M*

- Total Spent: Est \$1.8M with remainder re-approp
- Costs primarily used for FLP field staffing to layout and administer contracts
- Total Staffing 14.3 FTE for 19-21 Biennium
- \$200K towards fuels reduction contracts*
- \$200K towards engineering projects*
- **Total statewide acreage statewide 7,506 acres**
 - 4,701 Commercial Acres (approx. 49,206 MBF sold, est \$9.3M in value)
 - 2,710 Non-commercial Acres (fuels reduction contracts)

**Leveraged funds with federal appropriations and revenue generated with commercial projects (when available).*



Planning Areas for 20-Year Forest Health Strategic Plan/SB 5546 Eastern Washington October 2020



Stemilt Treatments

Lead Partners: Stemilt Partnership/Chelan County

DNR capital invested in the Stemilt Partnership, in Chelan County through 2 competitive collaborative grant programs:

- \$171,947 in All Lands Forest Restoration funding
- \$27,786 in Building Forest Partnerships funding

Secured a FY 2021 USDA Landscape Scale Restoration grant to leverage these dollars.



Mount Hull Project

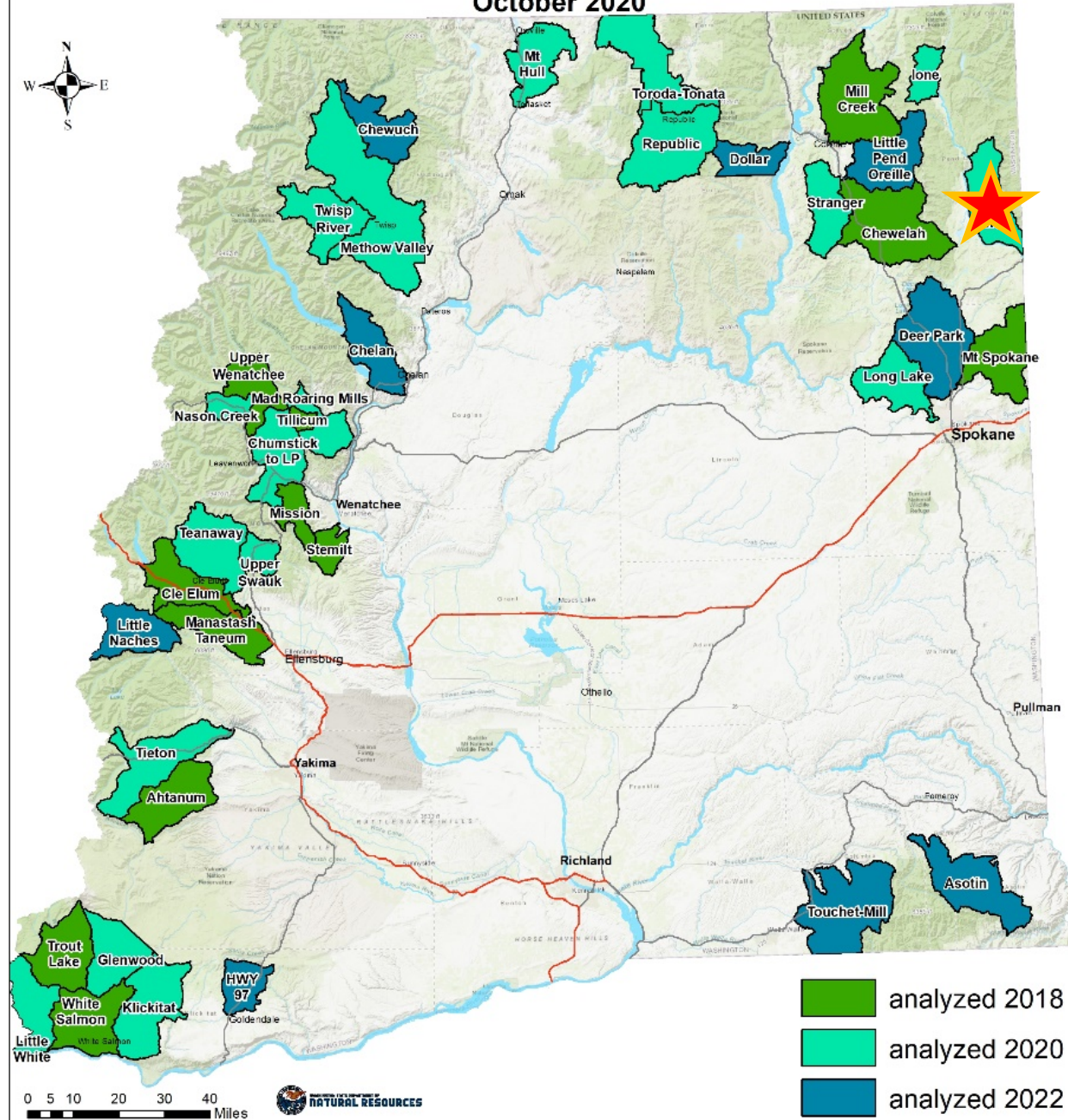
Lead partner: US Forest Service

704 acres of non-commercial vegetation treatments in 2020 in 5 units to both improve bighorn sheep habitat adjacent to cliffs and reduce fuel loadings, which required non-commercial thinning to be followed by prescribed burn.

DNR provided \$400,000 in 2019-21 Federal Lands direct investments, leveraging funding and support from Washington State Wild Sheep Foundation, US Forest Service, Colville Confederated Tribes, and Washington Department of Fish and Wildlife to complete thinning on these acres and set them up for pile and broadcast burning in the 2021-2023 biennium.



Planning Areas for 20-Year Forest Health Strategic Plan/SB 5546 Eastern Washington October 2020



Sxwuytn - Kaniksu Connections 'Trail' Project

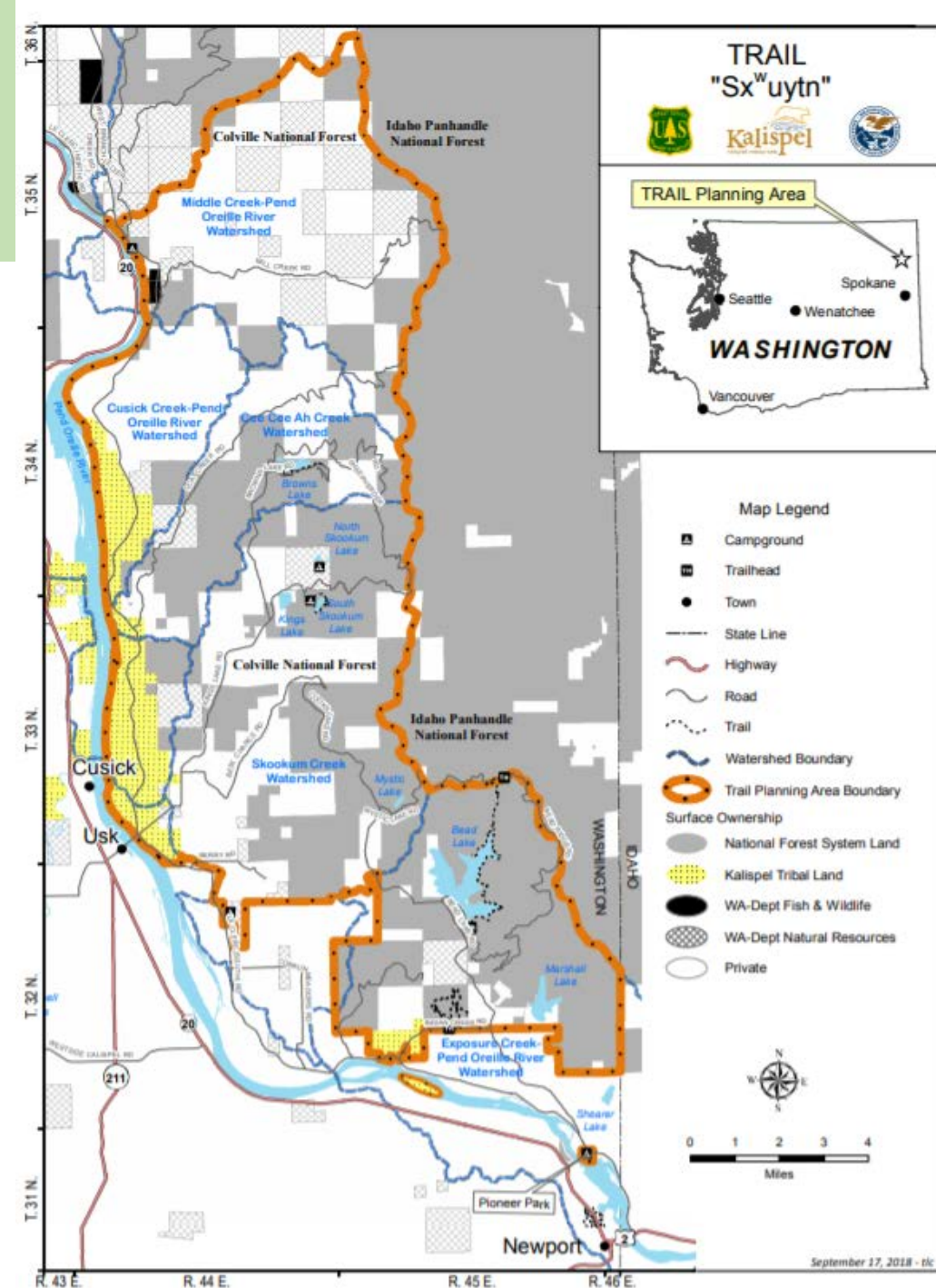
Lead Partner: Kalispell Tribe

\$120,000 in Federal Lands direct investments to Kalispell Tribe to support engineering, Project Team leadership, and writing to complete NEPA in this 90,700 acre project area.

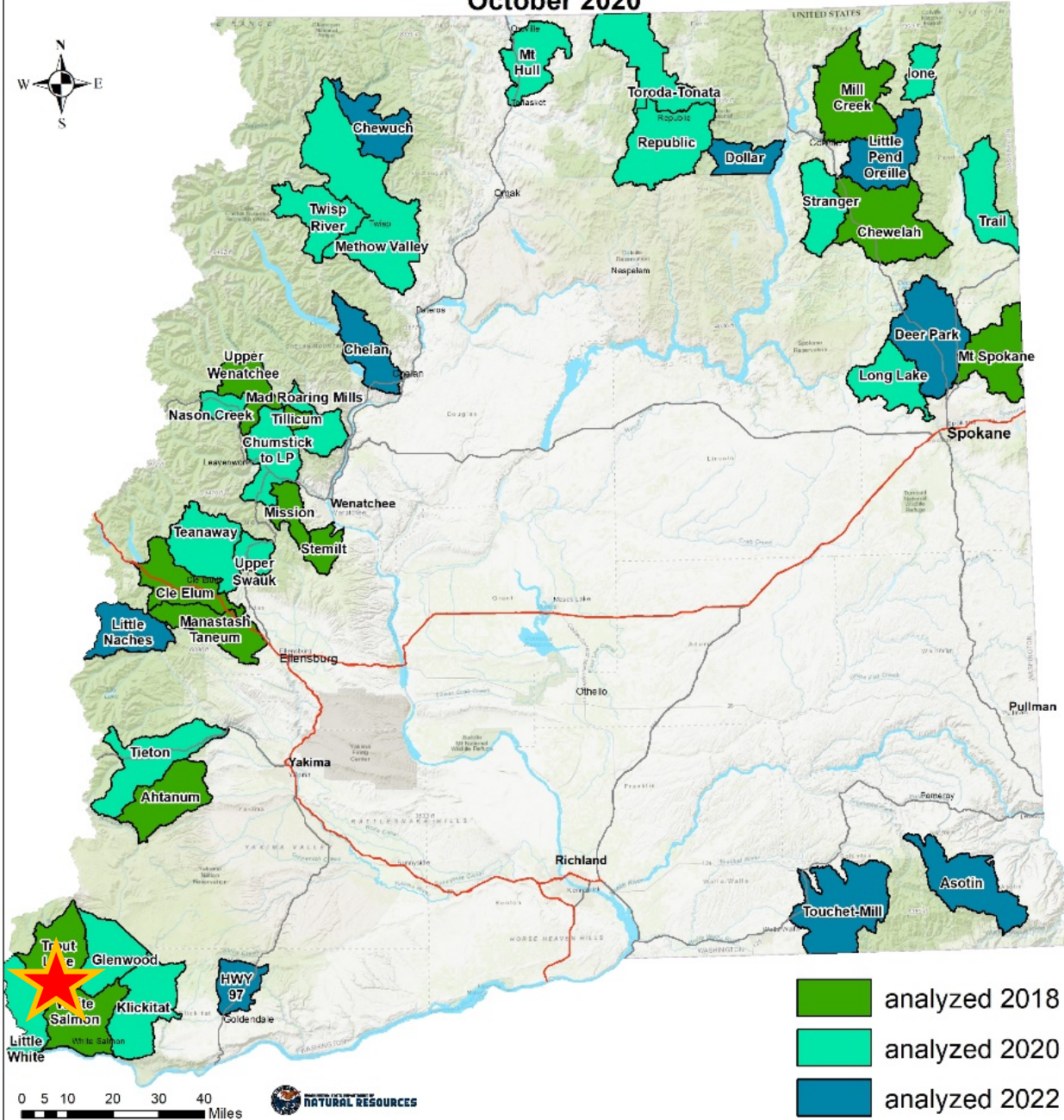
This NEPA was a partnership effort of Kalispell Tribes, Colville National Forest, and DNR working with many other partners.

NE Region, Federal Lands Section staff spent time directly engaged in the NEPA development.

Final decision signed in spring 2021



Planning Areas for 20-Year Forest Health Strategic Plan/SB 5546 Eastern Washington October 2020

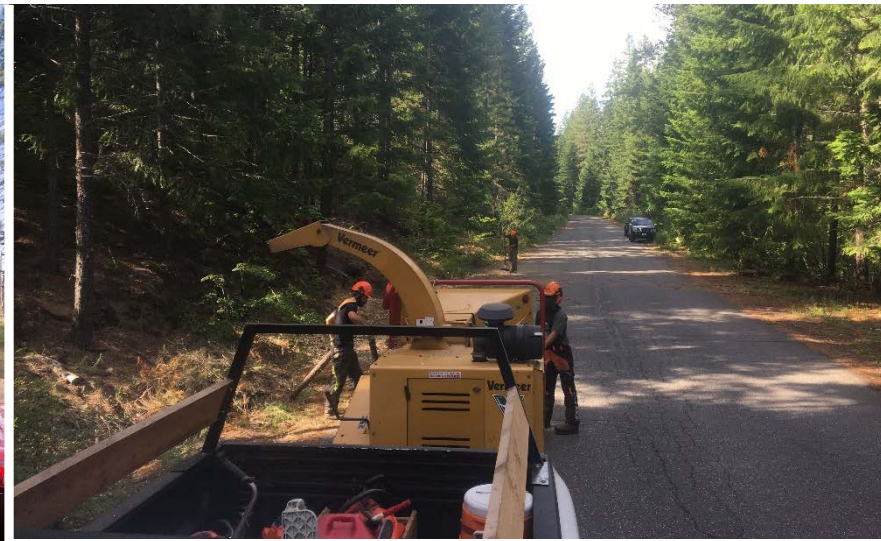


Trout Lake & Little White

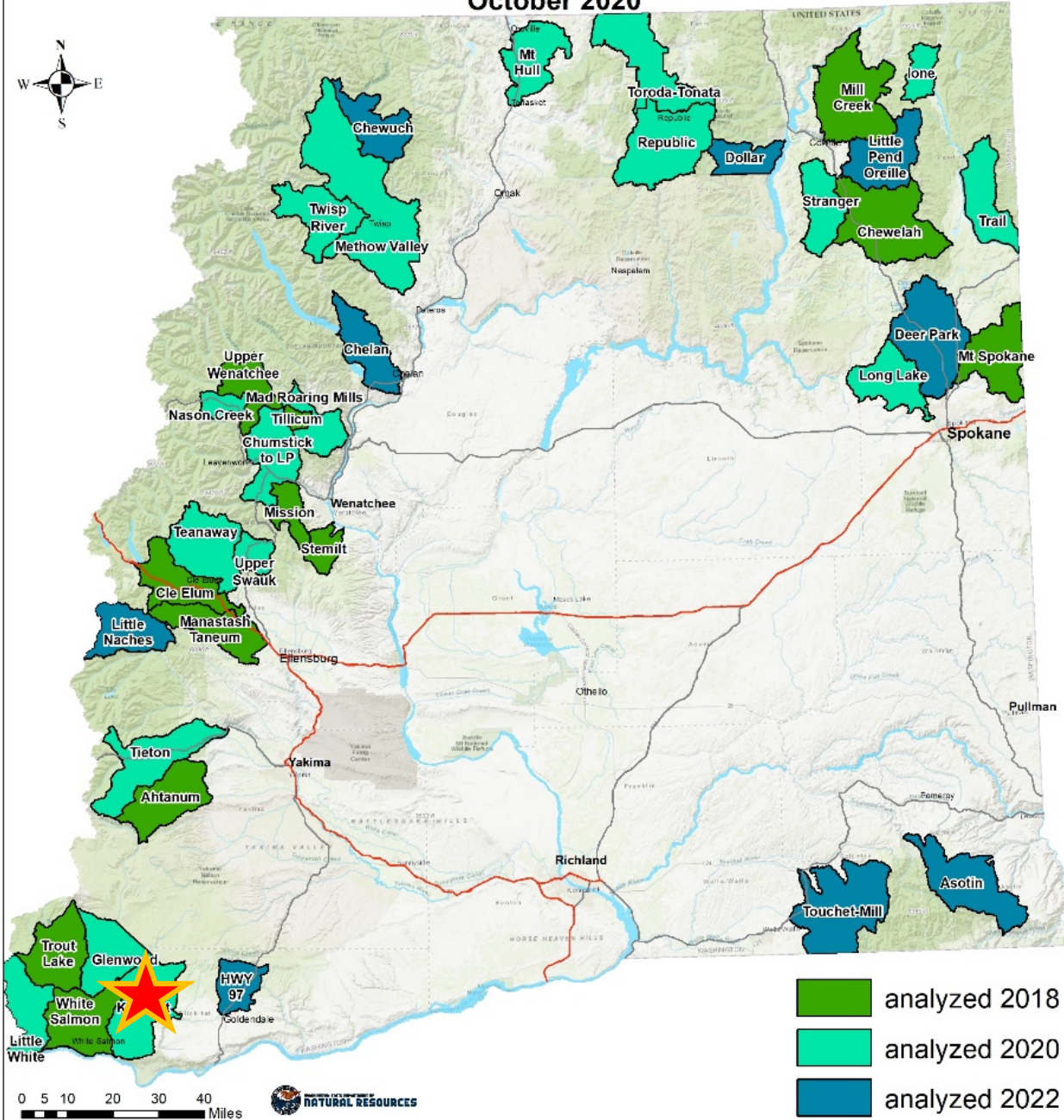
Lead partners: Mount Adams Resource Stewards and Gifford Pinchot National Forest

\$353,376 in All Lands Forest Restoration collaborative grant funding for 279 acres of mechanical fuels manipulation and fuels piling

\$420,000 in Federal Lands Direct Investments (non-GNA) for over 500 acres of fuels reduction work in Trout Lake and stand exams in Little White



Planning Areas for 20-Year Forest Health Strategic Plan/SB 5546 Eastern Washington October 2020



Columbia Land Trust

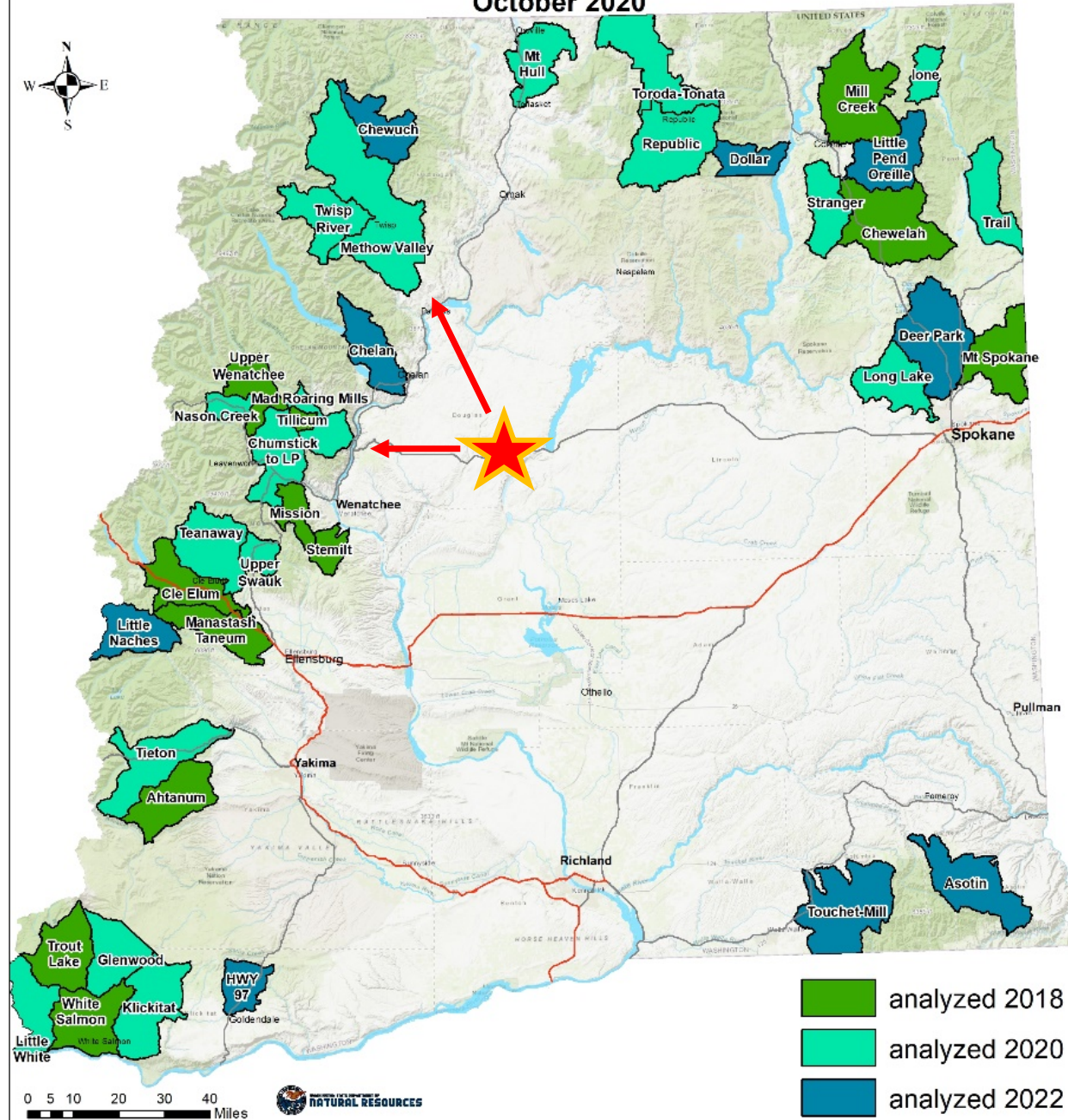
In coordination with DNR Landowner Assistance

\$30,000 in DNR capital funds went to brush control, non-commercial thinning, pruning, and slash disposal on 15 acres of private land in the Klickitat priority landscape.

This direct funding leveraged SE Region Landowner Assistance cost-share on adjacent acreage.



Planning Areas for 20-Year Forest Health Strategic Plan/SB 5546 Eastern Washington October 2020



Upper Columbia Beaver Dam Analog

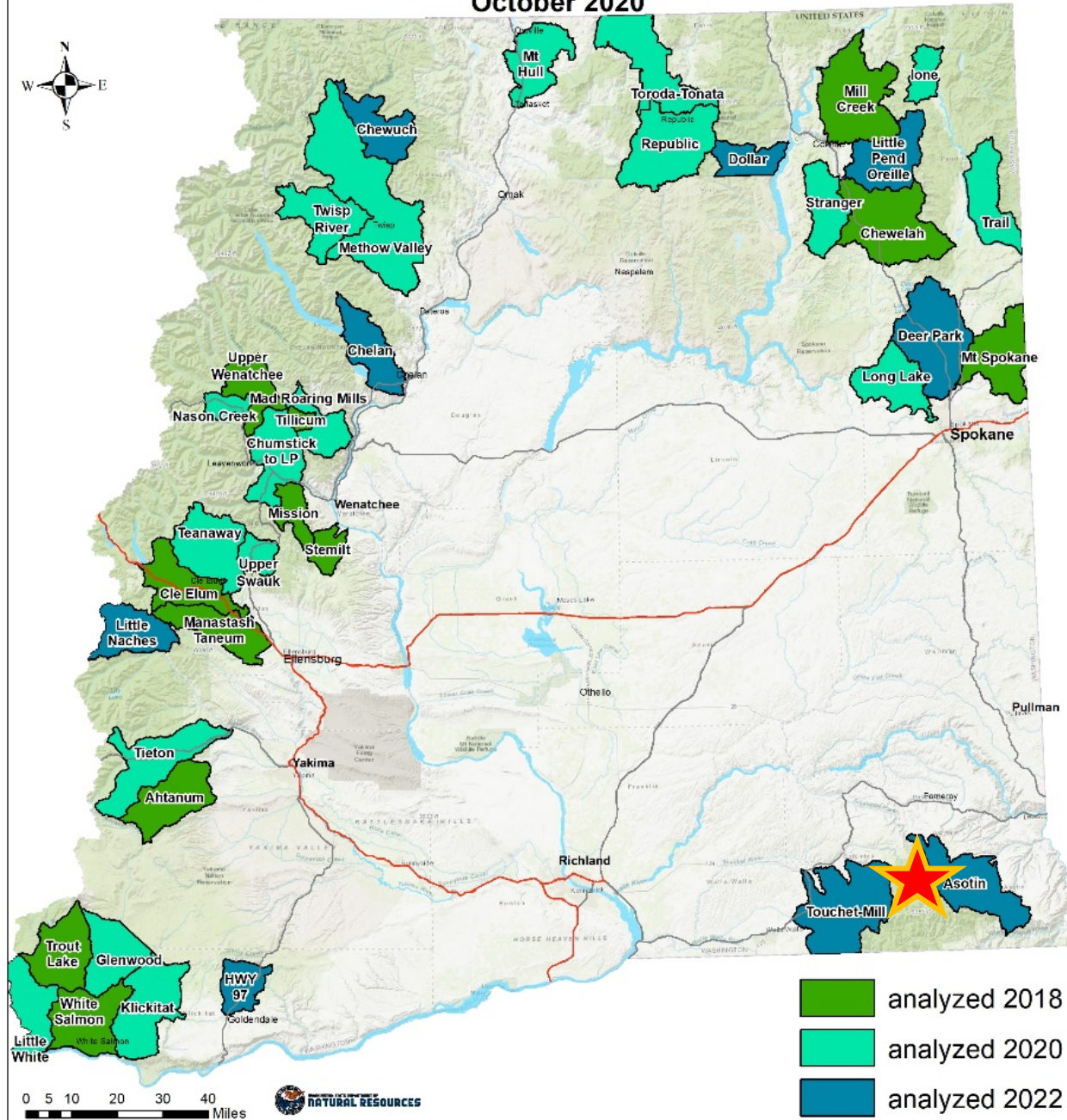
Lead partner: Colville Confederated Tribes

\$80,000 of DNR capital dollars were invested in the installation of over 40 beaver dam analogs in the Upper Columbia River basin in the Entiat, Wenatchee, and Methow sub-basins on national forest land within DNR priority landscapes to increase watershed resilience.

Colville Confederated Tribes worked in close partnership with Okanogan-Wenatchee National Forest and Trout Unlimited.



Planning Areas for 20-Year Forest Health Strategic Plan/SB 5546 Eastern Washington October 2020



0 5 10 20 30 40 Miles



- analyzed 2018
- analyzed 2020
- analyzed 2022



Umatilla National Forest

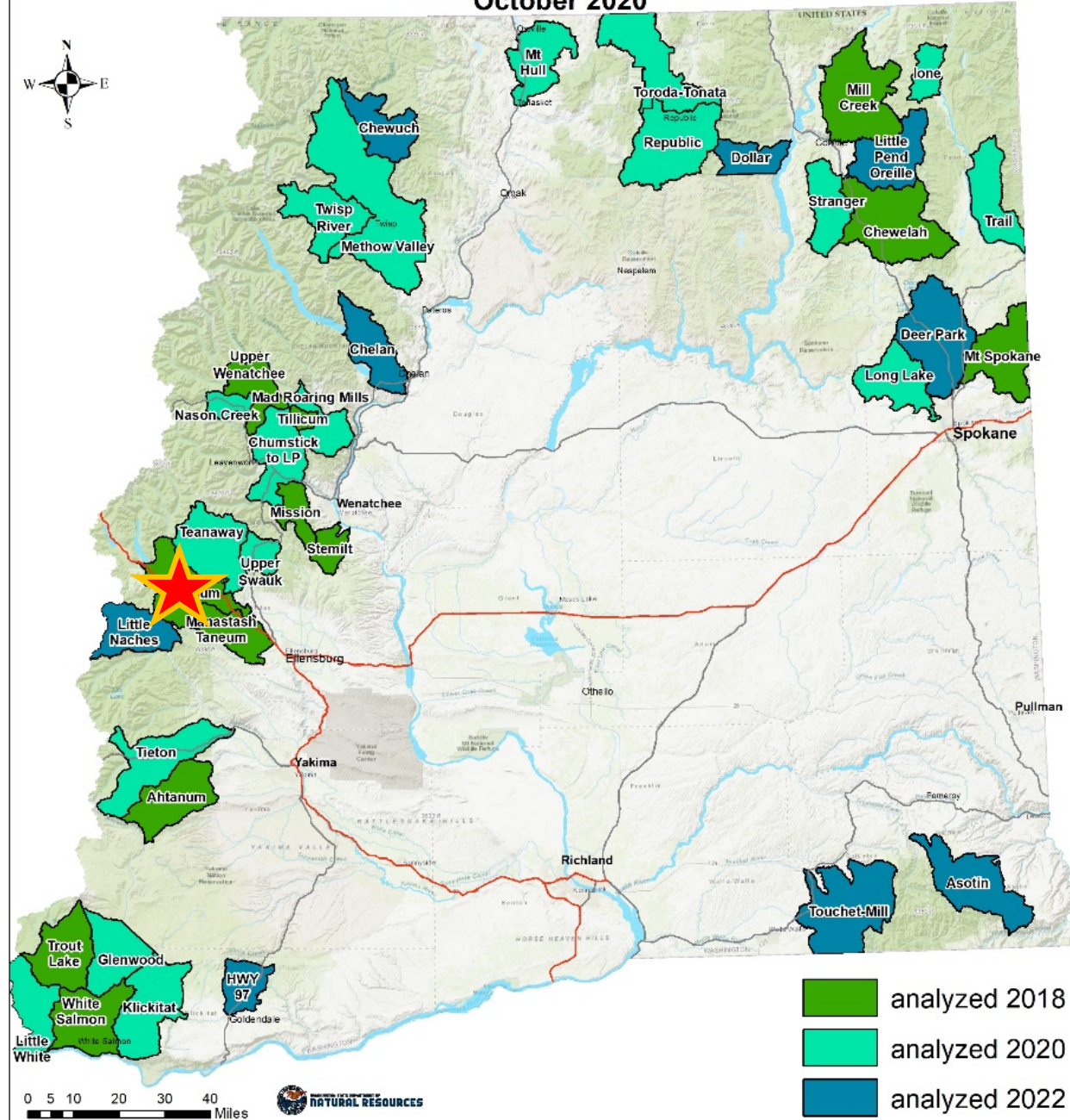
Pomeroy Ranger District

\$300,000 in Federal Lands direct investments went to the Umatilla National Forest for forest health treatments as follows:

- 399 acres of ladder fuel reduction and thinning in Pomeroy Hand NCT
- 435 acres of ladder fuel and thinning in Lick Mechanical NCT
- 40 acres of thinning hand piles and ground fuel reduction adjacent to Stentz recreation cabins



Planning Areas for 20-Year Forest Health Strategic Plan/SB 5546 Eastern Washington October 2020



Cle Elum Ridge

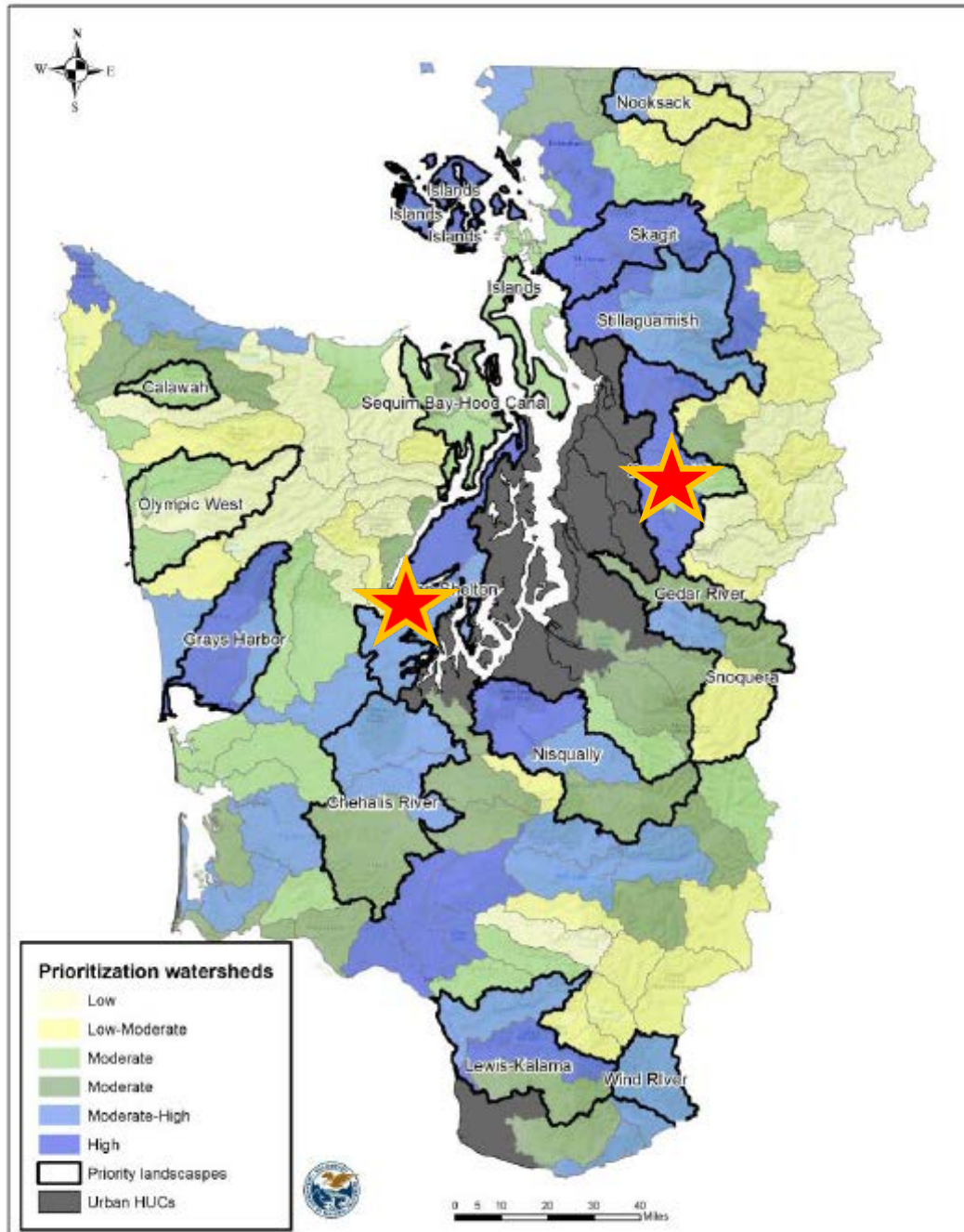
Lead partner: The Nature Conservancy

\$79,000 in DNR Strategic Investments resulted in 79 acres of thinning, slash disposal, and mastication for forest health and fuels reduction using 3 tracked machine masticators on TNC land.

High priority location identified in our landscape evaluation for Cle Elum priority landscape.



Western Washington Landscape Resilience



DNR Natural Areas

Implemented by crews with Mountains to Sound Greenway & Hood Canal Salmon Enhancement Group

\$80,000 in DNR Strategic Investment capital funds went to invasive species management and control through our DNR Natural Areas program in 2 Forest Action Plan priority landscapes on state and private land.

