



Independent Statistics & Analysis
U.S. Energy Information
Administration

Domestic Uranium Production Report 3rd Quarter 2014

October 2014



This report was prepared by the U.S. Energy Information Administration (EIA), the statistical and analytical agency within the U.S. Department of Energy. By law, EIA's data, analyses, and forecasts are independent of approval by any other officer or employee of the United States Government. The views in this report therefore should not be construed as representing those of the Department of Energy or other Federal agencies.

Contacts

This report was prepared by the staff of the Renewables and Uranium Statistics Team, Office of Electricity, Renewables, and Uranium Statistics. Questions about the preparation and content of this report may be directed to InfoNuclearData@eia.gov.

Preface

The U.S. Energy Information Administration (EIA) reports data spanning 1996 through third quarter 2014 on U.S. uranium production activities in this report, *3rd Quarter 2014 Domestic Uranium Production Report*. Data in this report are based on information reported on Form EIA-851A, “Domestic Uranium Production Report (Annual)” and Form EIA-851Q, “Domestic Uranium Production Report (Quarterly).”

Previous issues of this report may be found on the EIA website at <http://www.eia.gov/uranium/production/quarterly>

Definitions for terms used in this report can be found in EIA’s Energy Glossary: <http://www.eia.gov/tools/glossary/>.

Contents

Contacts	ii
Preface	iii
3rd Quarter 2014	1

Tables

Table 1. Total production of uranium concentrate in the United States, 1996 – 3rd Quarter 2014.....	2
Table 2. Number of uranium mills and plants producing uranium concentrate in the United States	3
Table 3. U.S. uranium mills and heap leach facilities by owner, location, capacity, and operating status ..	4
Table 4. U.S. uranium in-situ-leach plants by owner, location, capacity, and operating status.....	5

Figures

Figure 1. Uranium concentrate production in the United States, 1996 – 3rd Quarter 2014	7
--	---

3rd Quarter 2014

U.S. production of uranium concentrate in the third quarter 2014 was 1,468,608 pounds U_3O_8 , up 34% from the previous quarter and up 25% from the third quarter 2013. During the third quarter 2014, U.S. uranium was produced at eight U.S. uranium facilities.

U.S. Uranium Mill in Production (State)

1. White Mesa Mill (Utah)

U.S. Uranium In-Situ-Leach Plants in Production (State)

1. Alta Mesa Project (Texas)
2. Crow Butte Operation (Nebraska)
3. Hobson ISR Plant/La Palangana (Texas)
4. Lost Creek Project (Wyoming)
5. Nichols Ranch ISR Project (Wyoming)
6. Smith Ranch-Highland Operation (Wyoming)
7. Willow Creek Project (Wyoming)

New during this quarter, Strata Energy's Ross CPP (central processing plant) is under construction in Wyoming.

At the end of September 2014, U.S. uranium concentrate production totaled 3,805,798 pounds U_3O_8 . This amount is 3% higher than the 3,712,541 pounds produced during the first nine months of 2013.

Table 1. Total production of uranium concentrate in the United States, 1996 – 3rd Quarter 2014pounds U₃O₈

Calendar-year quarter	1st quarter	2nd quarter	3rd quarter	4th quarter	Calendar-year total
1996	1,734,427	1,460,058	1,691,796	1,434,425	6,320,706
1997	1,149,050	1,321,079	1,631,384	1,541,052	5,642,565
1998	1,151,587	1,143,942	1,203,042	1,206,003	4,704,574
1999	1,196,225	1,132,566	1,204,984	1,076,897	4,610,672
2000	1,018,683	983,330	981,948	973,585	3,975,545
2001	709,177	748,298	628,720	553,060	2,639,256
2002	620,952	643,432	579,723	E500,000	E2,344,107
2003	E400,000	E600,000	E400,000	E600,000	E2,000,000
2004	E600,000	E400,000	588,738	E600,000	2,282,406
2005	709,600	630,053	663,068	686,456	2,689,178
2006	931,065	894,268	1,083,808	1,196,485	4,105,626
2007	1,162,737	1,119,536	1,075,460	1,175,845	4,533,578
2008	810,189	1,073,315	980,933	1,037,946	3,902,383
2009	880,036	982,760	956,657	888,905	3,708,358
2010	876,084	1,055,102	1,150,725	1,146,281	4,228,192
2011	1,063,047	1,189,083	846,624	892,013	3,990,767
2012	1,078,404	1,061,289	1,048,018	957,936	4,145,647
2013	1,147,031	1,394,232	1,171,278	946,301	4,658,842
P2014	1,242,179	1,095,011	1,468,608	NA	--

E = Estimated data. P = Preliminary data. NA = Not available. -- = Not applicable.

Notes: The reported 4th quarter 2002 production amount was adjusted by rounding to the nearest 100,000 pounds to avoid disclosure of individual company data. This also affects the 2002 annual production. The reported 2003 and 1st, 2nd, and 4th quarter 2004 production amounts were adjusted by rounding to the nearest 200,000 pounds to avoid disclosure of individual company data. The reported 2004 total is the actual production for 2004. Totals may not equal sum of components because of independent rounding.

Source: U.S. Energy Information Administration: Form EIA-851A and Form EIA-851Q, "Domestic Uranium Production Report."

Table 2. Number of uranium mills and plants producing uranium concentrate in the United States

End of	Uranium Concentrate Processing Facilities				Total
	Mills - conventional milling ¹	Mills - other operations ²	In-situ-leach plants ³	Byproduct recovery plants ⁴	
1996	0	2	5	2	9
1997	0	3	6	2	11
1998	0	2	6	1	9
1999	1	2	4	0	7
2000	1	2	3	0	6
2001	0	1	3	0	4
2002	0	1	2	0	3
2003	0	0	2	0	2
2004	0	0	3	0	3
2005	0	1	3	0	4
2006	0	1	5	0	6
2007	0	1	5	0	6
2008	1	0	6	0	7
2009	0	1	3	0	4
2010	1	0	4	0	5
2011	1	0	5	0	6
2012	1	0	5	0	6
2013	0	1	6	0	7
3rd Quarter					
2014	1	0	7	0	8

¹ Milling uranium-bearing ore.

² Not milling ore, but producing uranium concentrate from other (non-ore) materials.

³ Not including in-situ-leach plants that only produced uranium concentrate from restoration.

⁴ Uranium concentrate as a byproduct from phosphate production.

Source: U.S. Energy Information Administration: Form EIA-851A and Form EIA-851Q, "Domestic Uranium Production Report."

Table 3. U.S. uranium mills and heap leach facilities by owner, location, capacity, and operating status

Owner	Mill and Heap Leach ¹ Facility name	County, state (existing and planned locations)	Capacity (short tons of ore per day)	Operating status at end of			
				2013	1st quarter 2014	2nd quarter 2014	3rd quarter 2014
EFR White Mesa LLC	White Mesa Mill	San Juan, Utah	2,000	Operating- Processing Alternate Feed	Operating- Processing Alternate Feed	Operating	Operating
Energy Fuels Resources Corporation	Pinon Ridge Mill	Montrose, Colorado	500	Permitted And Licensed	Permitted And Licensed	Permitted And Licensed	Permitted And Licensed
Energy Fuels Wyoming, Inc.	Sheep Mountain	Fremont, Wyoming	725	Undeveloped	Undeveloped	Undeveloped	Undeveloped
Kennecott Uranium Company/Wyoming Coal Resource Company	Sweetwater Uranium Project	Sweetwater, Wyoming	3,000	Standby	Standby	Standby	Standby
Uranium One Americas, Inc.	Shootaring Canyon Uranium Mill	Garfield, Utah	750	Standby	Standby	Standby	Standby
Total Capacity:			6,975				

¹ Heap leach solutions: The separation, or dissolving-out from mined rock, of the soluble uranium constituents by the natural action of percolating a prepared chemical solution through mounded (heaped) rock material. The mounded material usually contains low grade mineralized material and/or waste rock produced from open pit or underground mines. The solutions are collected after percolation is completed and processed to recover the valued components.

Notes: Capacity for 3rd Quarter 2014. An operating status of "Operating" indicates the mill was producing uranium concentrate at the end of the period.

Source: U.S. Energy Information Administration: Form EIA-851A and Form EIA-851Q, "Domestic Uranium Production Report."

Table 4. U.S. uranium in-situ-leach plants by owner, location, capacity, and operating status

In-situ-leach plant owner	In-situ-leach plant name	County, state (existing and planned locations)	Production capacity (pounds U ₃ O ₈ per year)	Operating status at end of			
				2013	1st quarter 2014	2nd quarter 2014	3rd quarter 2014
AUC LLC	Reno Creek	Campbell, Wyoming	-	Developing	Developing	Developing	Developing
Cameco	Crow Butte Operation	Dawes, Nebraska	1,000,000	Operating	Operating	Operating	Operating
Hydro Resources, Inc.	Church Rock	McKinley, New Mexico	1,000,000	Partially Permitted And Licensed	Partially Permitted And Licensed	Partially Permitted And Licensed	Partially Permitted And Licensed
Hydro Resources, Inc.	Crownpoint	McKinley, New Mexico	1,000,000	Partially Permitted And Licensed	Partially Permitted And Licensed	Partially Permitted And Licensed	Partially Permitted And Licensed
Lost Creek ISR, LLC	Lost Creek Project	Sweetwater, Wyoming	2,000,000	Operating	Operating	Operating	Operating
Mestena Uranium LLC	Alta Mesa Project	Brooks, Texas	1,500,000	Producing	Producing	Producing	Producing
Power Resources, Inc. dba Cameco Resources	Smith Ranch-Highland Operation	Converse, Wyoming	5,500,000	Operating	Operating	Operating	Operating
Powertech Uranium Corp	Dewey Burdock Project	Fall River and Custer, South Dakota	1,000,000	Developing	Partially Permitted And Licensed	Partially Permitted And Licensed	Partially Permitted And Licensed
South Texas Mining Venture	Hobson ISR Plant	Karnes, Texas	1,000,000	Operating	Operating	Operating	Operating
South Texas Mining Venture	La Palangana	Duval, Texas	1,000,000	Operating	Operating	Operating	Operating
Strata Energy Inc	Ross CPP	Crook, Wyoming	3,000,000	Partially Permitted And Licensed	Partially Permitted And Licensed	Permitted And Licensed	Under Construction
URI, Inc.	Kingsville Dome	Kleberg, Texas	1,000,000	Restoration	Restoration	Restoration	Restoration
URI, Inc.	Rosita	Duval, Texas	1,000,000	Restoration	Restoration	Restoration	Restoration

Table 4. U.S. uranium in-situ-leach plants by owner, location, capacity, and operating status (cont.)

In-situ-leach plant owner	In-situ-leach plant name	County, state (existing and planned locations)	Production capacity (pounds U ₃ O ₈ per year)	Operating status at end of			
				2013	1st quarter 2014	2nd quarter 2014	3rd quarter 2014
URI, Inc.	Vasquez	Duval, Texas	800,000	Restoration	Restoration	Restoration	Restoration
Uranerz Energy Corporation	Nichols Ranch ISR Project	Johnson and Campbell, Wyoming	2,000,000	Under Construction	Under Construction	Producing	Operating
Uranium Energy Corp.	Goliad ISR Uranium Project	Goliad, Texas	1,000,000	Permitted And Licensed	Permitted And Licensed	Permitted And Licensed	Permitted And Licensed
Uranium One Americas, Inc.	Jab and Antelope	Sweetwater, Wyoming	2,000,000	Developing	Developing	Developing	Developing
Uranium One Americas, Inc.	Moore Ranch	Campbell, Wyoming	500,000	Permitted And Licensed	Permitted And Licensed	Permitted And Licensed	Permitted And Licensed
Uranium One Americas, Inc.	Willow Creek Project (Christensen Ranch and Irigaray)	Campbell and Johnson, Wyoming	1,300,000	Producing	Producing	Operating	Operating
Total Production Capacity:			27,600,000				

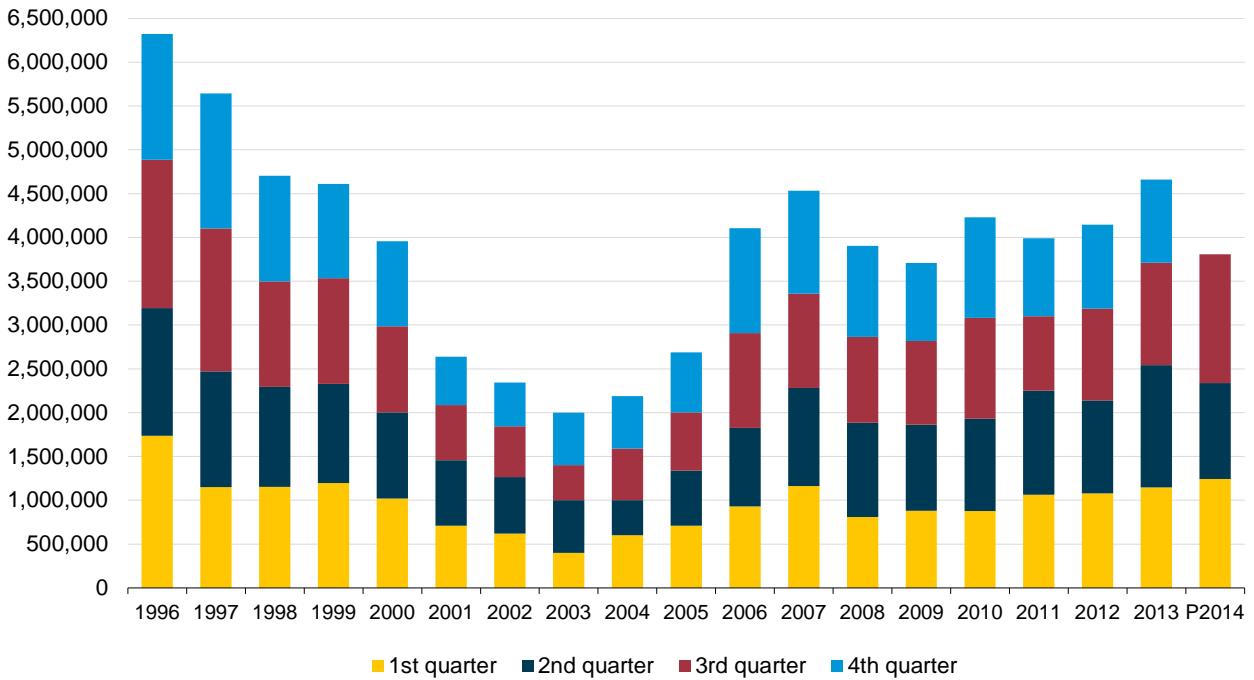
- = No data reported

Notes: Production capacity for 3rd Quarter 2014. An operating status of "Operating" indicates the in-situ-leach plant usually was producing uranium concentrate at the end of the period. Hobson ISR Plant processed uranium concentrate that came from La Palangana. Hobson and La Palangana are part of the same project. ISR stands for in-situ recovery. Christensen Ranch and Irigaray are part of the Willow Creek Project. Uranerz Energy has a tolling arrangement with Cameco Resources. Uranium is first processed at the Nichols Ranch plant and then transported to the Smith Ranch-Highland Operation plant for final processing into Uranerz's uranium concentrate. CPP stands for central processing plant.

Source: U.S. Energy Information Administration: Form EIA-851A and Form EIA-851Q, "Domestic Uranium Production Report."

Figure 1. Uranium concentrate production in the United States, 1996 – 3rd Quarter 2014

pounds U₃O₈



P = Preliminary data.

Source: U.S. Energy Information Administration: Form EIA-851A and Form EIA-851Q, "Domestic Uranium Production Report."