

UNWANTED!

EMERALD ASH BORER



Emerald Ash Borer



Healthy ash tree

The borer prefers white, green, blue and black ash, but not mountain ash.



Sick ash trees



Adults emerge leaving D-shaped exit holes



S-shaped galleries



Ash bark



Ash leaf



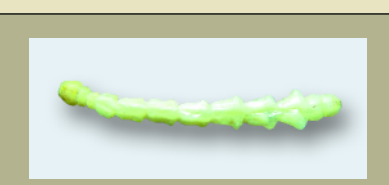
White ash seeds



Larvae overwinter under bark



Adult (1/2 inch)



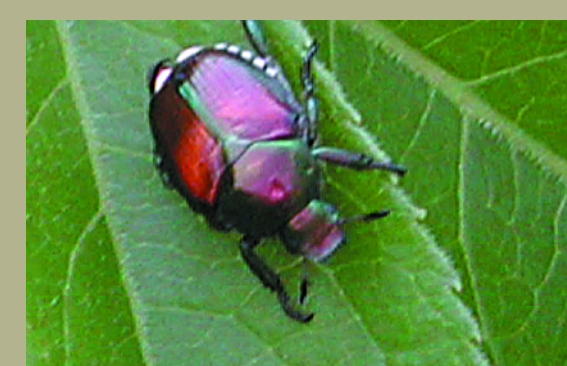
Larva (1 1/2 inches)

Actual size

Other insects that are mistaken for emerald ash borer:



Banded Ash Borer



Japanese Beetle



Six-spotted Tiger Beetle

Call the **USDA APHIS EAB Hotline:**

1-866-322-4512

www.emeraldashborer.info

Produced by:

**USDA Forest Service
Michigan State University**

MSU is an affirmative-action, equal-opportunity employer.

E-3004 | Revised | September 2009

UNWANTED!

EMERALD ASH BORER



Call the USDA APHIS EAB Hotline:
1-866-322-4512
www.emeraldashborer.info

Produced by:
USDA Forest Service
Michigan State University