



Join
the

LORAX

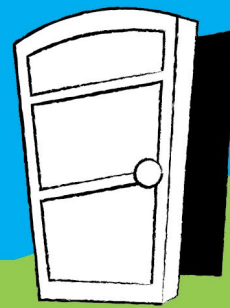
To Help Save Energy, Water,
and Protect the Planet

Activity Book

Join the Lorax and ENERGY STAR by doing your part.
Save energy at home and at school -
to keep pollution out of the air and keep the earth cool!
The Lorax can teach us a thing or two,
about saving water - that's good for the earth too!



The **Lorax** is proud to speak for the earth!
 Without it, what would our **future** be worth?
 Now he **needs YOU** to be of assistance
 And to all the **Once-lers**, offer **resistance!**
 Join **US** in **spreading the word**,
 And finally the **voice** of the **earth** will be heard.



Do you want to help?
 Well it's your lucky day-
 The tips on this trail will show you the way.
 Just follow the path - go hurry on in,
 And mark what you've read by coloring in!

Heating and cooling your
 humble abode,
 Increases your home's total
 energy load.
 Stop energy waste, and keep
 your air clean,
 By shutting the doors and
 the windows you've seen!

WATER CROSSWORD PUZZLE

Truffula Trees can grow greener and taller,
 When you take simple steps to help conserve water!
 Check out the poem below for ways to save and reduce.
 And then fill in the blanks about smart water use.

It's wasteful to leave the tap pouring and running-
 So turn off the **faucet** while brushing.
 And **scrape** dishes off before dishwasher loading.
 Wash **fruit** and veggies in a water-filled bowl-
 No need for running water - now you're on a roll!

What else uses water? The washing machine.
 Make sure it's **full** before getting clothes clean.
 Time for a shower? Keep it short if you can!
Five minutes is plenty to get spick and span.

And when the time comes for a new faucet,
WaterSense means it's efficient - so pick it!



Across

- 1- Make sure the washing machine is _____ and set to use cold water before turning it on.
- 2- Turn off the _____ while you brush your teeth.
- 3- Look for Water _____ labeled shower heads, faucets, and other products.

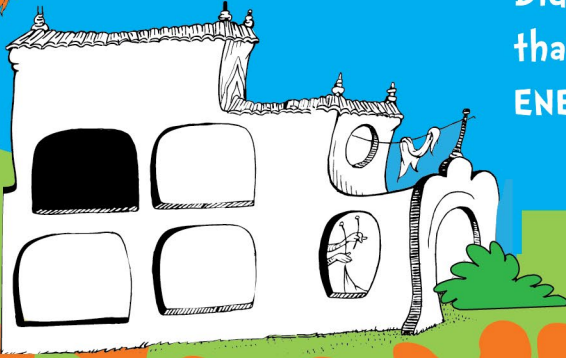
Down

- 1- Keep your showers to _____ minutes or less.
- 2- _____ off dishes, instead of rinsing, before they go in the dishwasher.
- 3- Wash _____ and veggies in a container or bowl, instead of under running water.

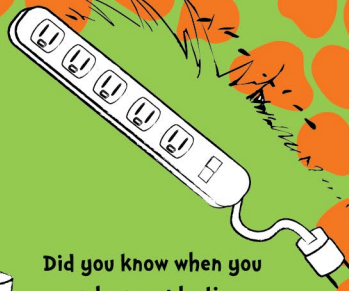
When you walk by the
 trash basket today,
 Remember the Lorax and
 what he would say:
Paper is made from the
 Truffula Trees,
 So whenever you can,
 recycle it please!



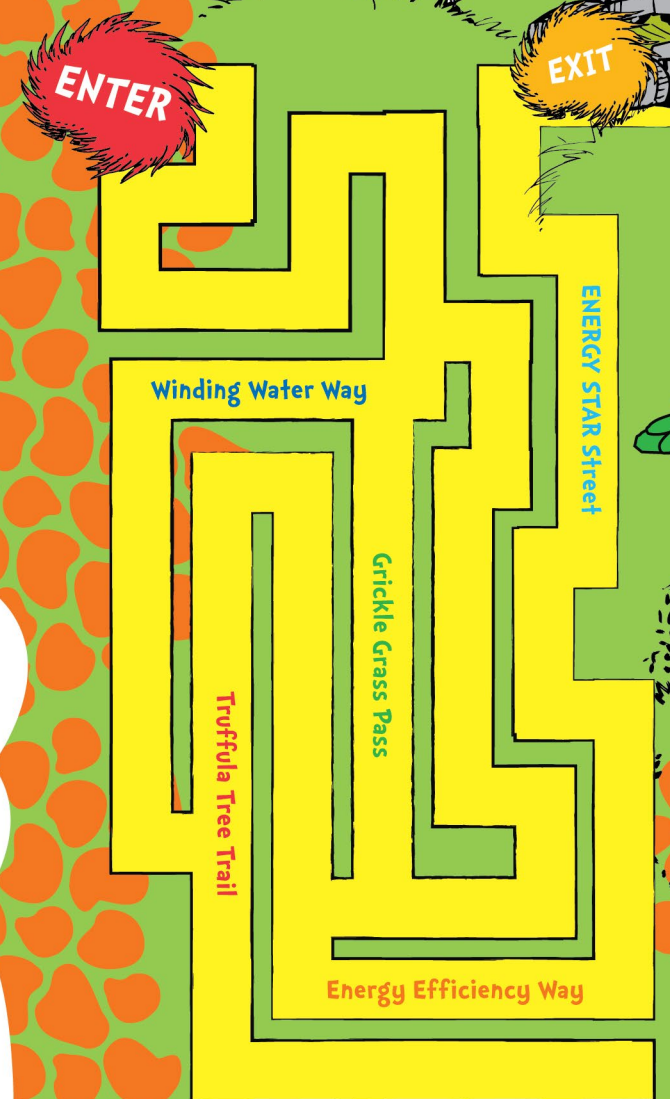
Did you know? Buildings and homes that save energy can earn the ENERGY STAR too!



It may be surprising - it may make you scoff,
But electronics use energy even when turned off!
A "smart" power strip cuts the energy flow.
When you turn off the TV at the end of your show!



Did you know when you recycle your plastic, its transformation can be truly drastic?
Playgrounds and t-shirts, and sleeping bags too,
Are just some of the ways plastic can be made new.



WORD SEARCH

Here are some ways you can help save the planet. And a puzzle to make it more fun, while you're at it! The words in this puzzle are hidden, it's true— But look very closely and they'll come into view.

C	T	F	A	L	T	H	F	G	V	H	X
U	E	Q	R	E	D	U	C	E	W	J	M
I	N	Q	M	L	A	R	Q	Z	S	I	B
V	E	U	L	U	O	Z	S	H	A	R	E
O	R	K	E	P	R	O	T	E	C	T	L
R	G	W	A	T	E	R	S	E	N	S	E
E	Y	U	R	S	L	L	Q	R	G	X	B
U	S	E	N	R	R	K	R	T	T	L	T
S	T	L	C	O	N	S	E	R	V	E	Y
E	A	E	I	U	B	G	H	R	Q	H	G
W	R	E	A	N	B	K	I	L	T	S	N
R	E	C	Y	C	L	E	Z	A	O	P	T

CONSERVE | PROTECT | RECYCLE | REDUCE | REUSE | SHARE
LEARN | ENERGY STAR | WATERSENSE

ENERGY STAR and WaterSense Super Sleuths

When you go to the store, you face so many options:
"Pick me!" "I'm the best!" say all the contraptions.

In all of those sounds, there is one little voice saying,
ENERGY STAR is the simple choice!

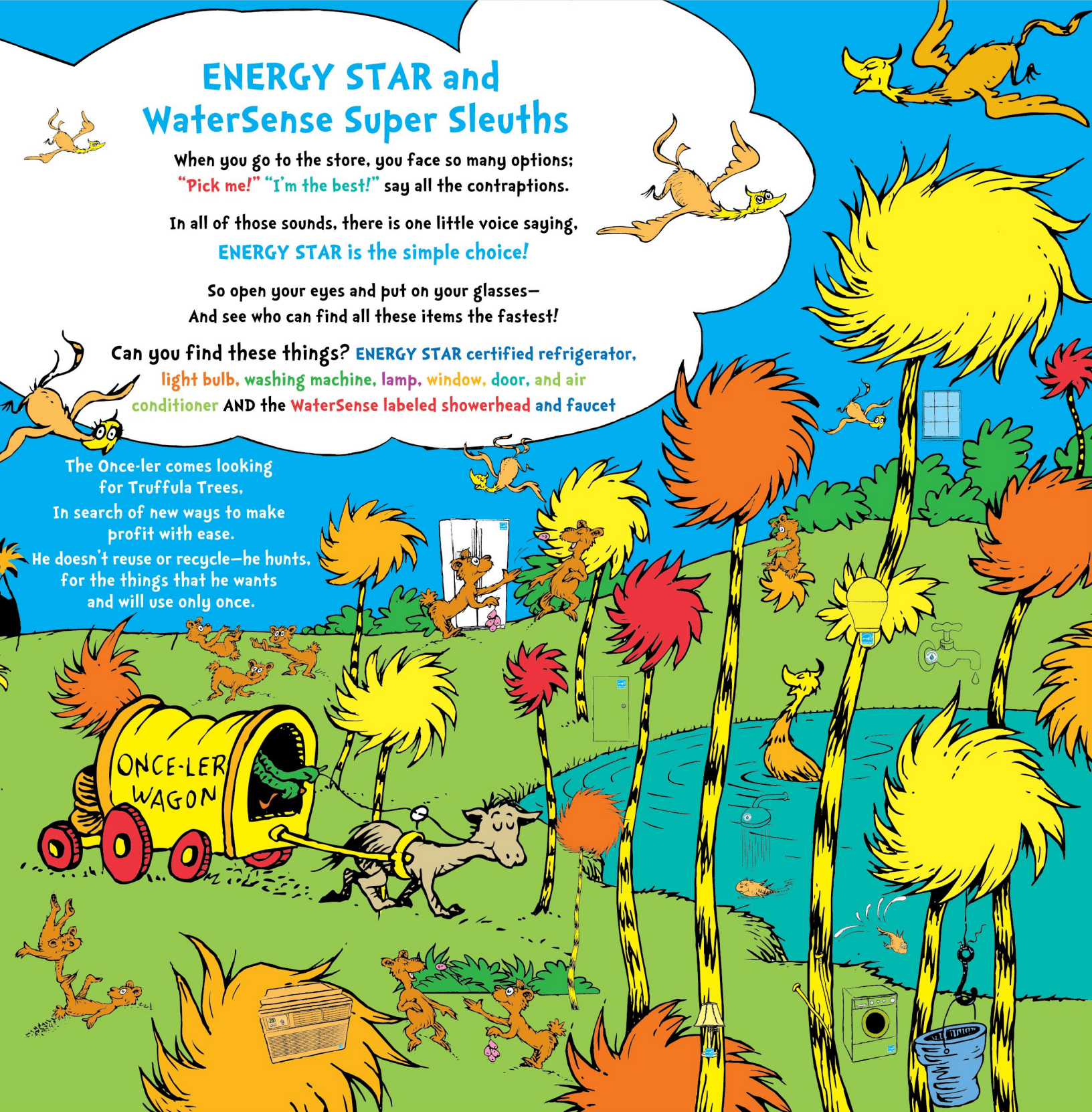
So open your eyes and put on your glasses—
And see who can find all these items the fastest!

Can you find these things? **ENERGY STAR** certified refrigerator, light bulb, washing machine, lamp, window, door, and air conditioner AND the **WaterSense** labeled showerhead and faucet

The Once-ler comes looking
for Truffula Trees.

In search of new ways to make
profit with ease.

He doesn't reuse or recycle—he hunts,
for the things that he wants
and will use only once.



More ways to help

Our planet has limited resources, but the population continues to grow –
So EPA offers tips and tricks to help us reduce, reuse, and recycle.
Learn how you can save and share what you learn with your friends and family!

energystar.gov | epa.gov/watersense/kids | epa.gov/recycle



FINISH

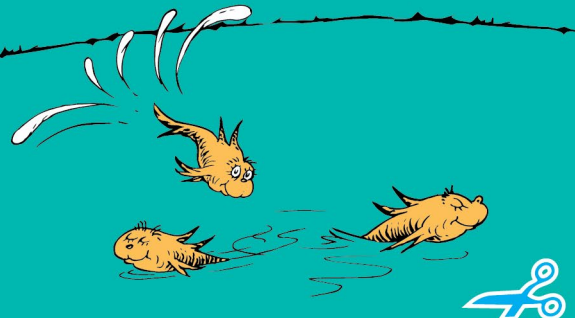


Leaving the room?
 Is it time to depart?
 Empty rooms like to be quiet and dark.
 Flip off the lights and turn off the TV.
 Because unused appliances don't
 need to see!

If you like to splish and splash,
 Keep the water on the grass.
 Streets and paths don't need to be wet;
 Make good use of each drop of water you get!

FUN WITH SAVING MATCH GAME

Each of us must do our part to conserve,
 But if two work together, that steepens the curve!
 The trees must stay green; the ice must not melt—
 So ENERGY STAR and WaterSense are here to help.
 Cut out the cards, and place them face-down.
 Pick up a card, and flip it around.
 Can you remember the right card to match?
 Two at a time only, please—that's the catch!



 Join the LORAX	 Join the LORAX	 Join the LORAX	 Join the LORAX	 Join the LORAX
 Join the LORAX	 Join the LORAX	 Join the LORAX	 Join the LORAX	 Join the LORAX

Do-It-Yourself!

Fill in the blanks to write your own poem and see how the world will look if we all find ways to save energy and protect the environment.

Protecting the _____ is a tough job for one.
your favorite part of nature

But if nobody starts, it never gets done!

So when leaving the _____, be energy smart.
room in your home

Turn off the _____ so you're doing your part!
rhymes with "rights"

And if you're getting a new game console or TV,

ask for one that's proven to _____ energy!
verb

Together we'll keep _____ healthy and clean,
your favorite part of nature

And the skies always _____,
color

And the trees always _____.
color



Go to:
energystar.gov and
epa.gov/watersense/kids
to learn more





Join
the



LORAX

To Help Save Energy And
Protect The Planet

Helper Checklist

- Keep doors and windows closed when the air conditioning or heat is on.
- Turn off lights, the TV, and other electronics when I leave the room.
- Unplug electronics and chargers when I am done with them.
- Put my computer to sleep.
- Walk, ride a bike, or skateboard instead of using a car or bus.
- Tell my friends and family about the importance of Earth Day and learn what they can do to help the planet at energystar.gov/EarthDay.



Join the Lorax and EPA by doing your part every day.
We can all support a healthier planet by making easy
energy-saving changes at home and at school.
Learn more at energystar.gov

