



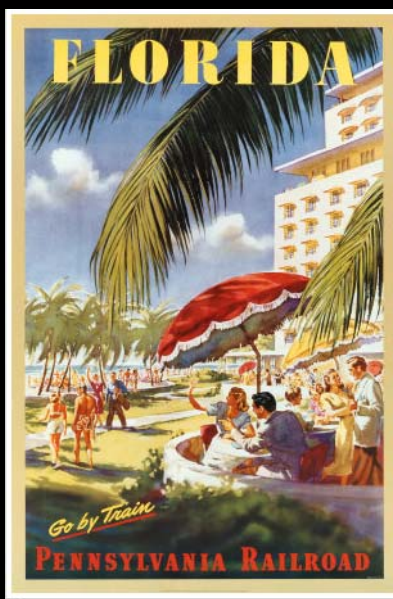
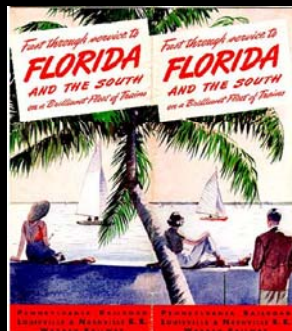
Why Should I Care About Transportation and Land Use?



Traveling to Florida – c1880s



Traveling to Florida – c1950s



Today ... Welcome to Florida!



2010 Most Congested Regions in US:

Southeast Florida Rankings

#7 in Travel Delay

140 Million hours lost per year

#8 in Congestion Costs

\$3.2 Billion wasted per year

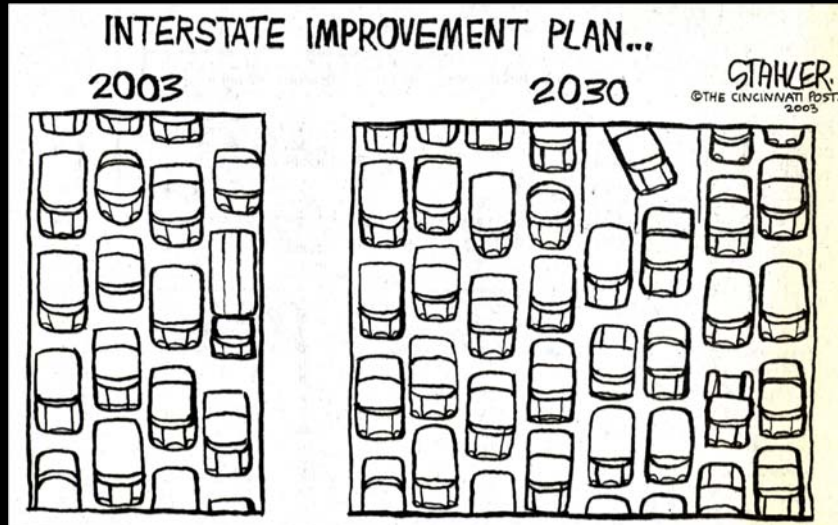
SOURCE: TTI 2010 Urban Mobility Report (Dec 2010)



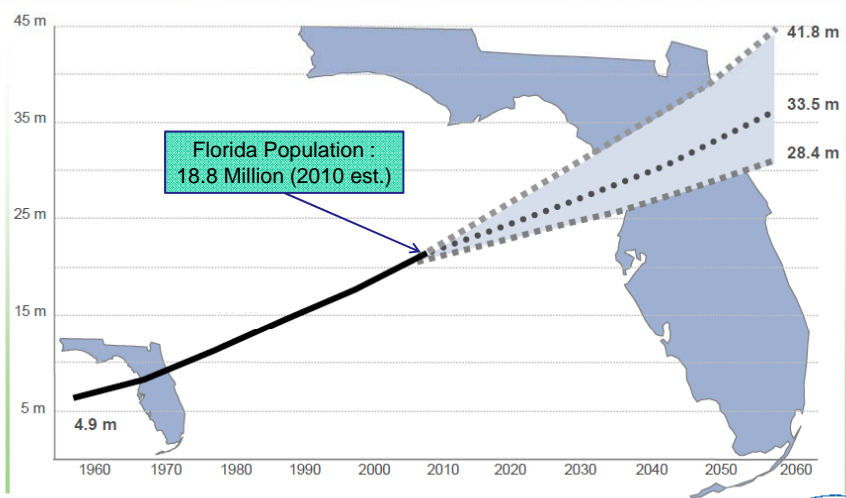
Report: I-95 In Fla. Most Dangerous Roadway In Country

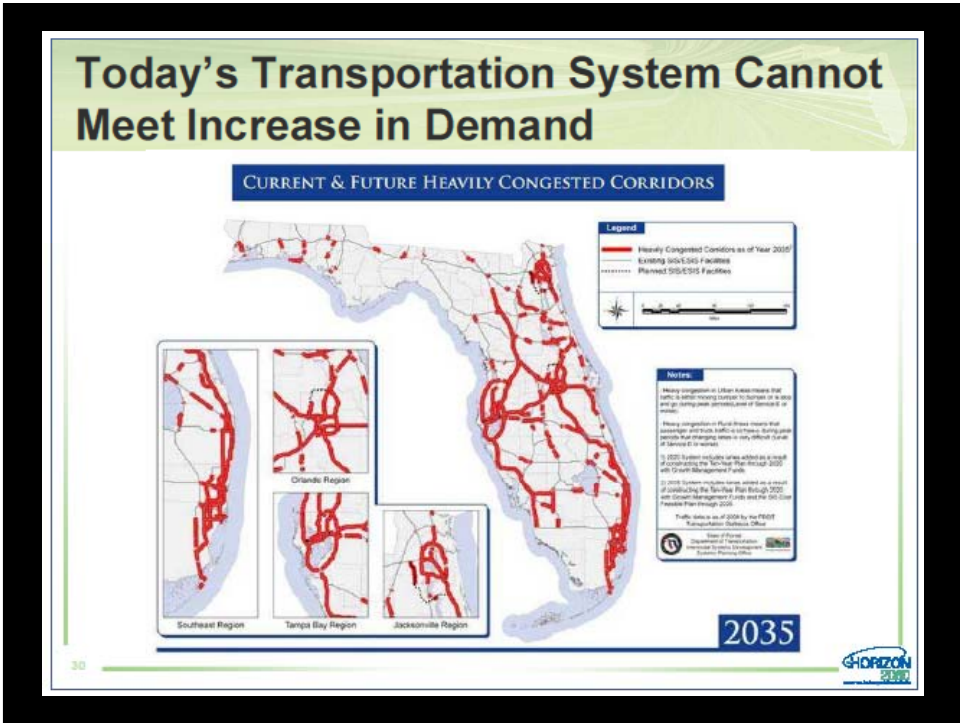
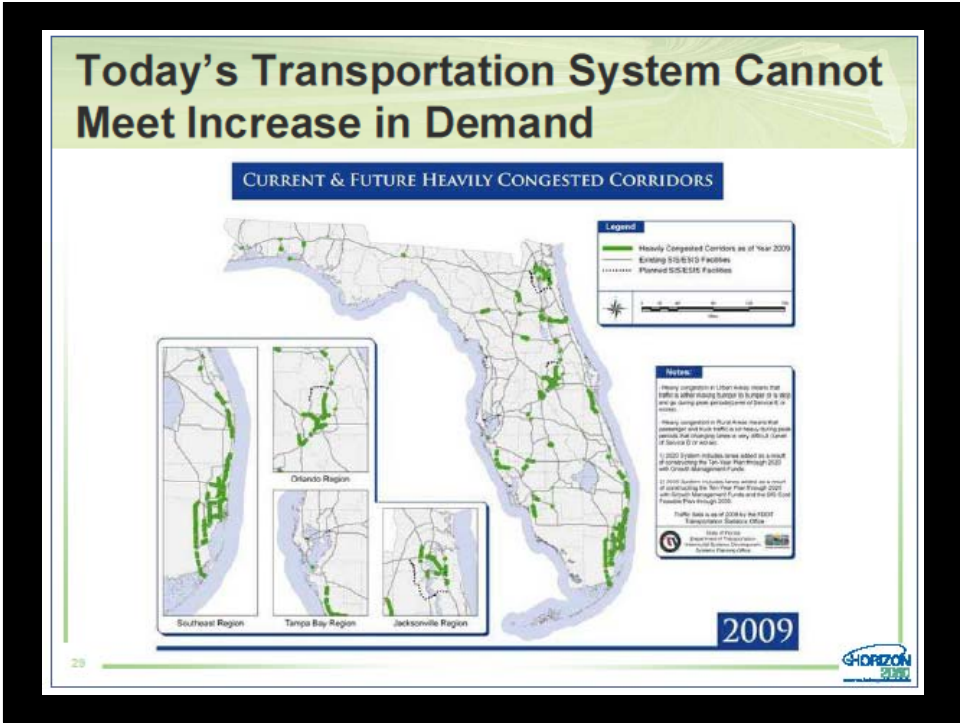
662 Fatal Accidents, 765 Total Fatalities
Occurred On I-95 From 2004 To 2008

Congestion or Mobility?

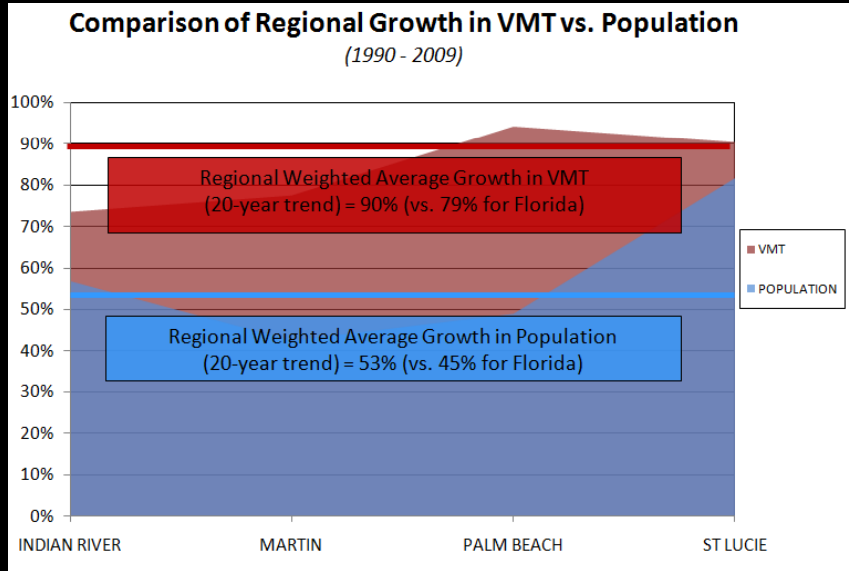


Demography: Population Still Growing





So Why Are The Roads So Crowded?



What's the Roadway Forecast?



"I have 25% of the money I need to build 100% of the State's Intermodal Highway System in District Four"

James Wolfe, FDOT Secretary, District Four

The Big Questions:
How Will We Settle the Next
10 (or 20) Million Floridians?



... And How Will They Move?



A Paradigm Shift

Predictability?

AS • SCRIPPS TREASURE COAST NEWSPAPERS • TUESDAY, JUNE 4, 2008

High gas prices lead to surge in mass transit



Region fuming over gas prices

In August, 72 percent of statewide price-gouging complaints to Attorney General Charlie Crist were registered from people on the Treasure Coast.

By Holly Gough

TOM'S SHELL

Self Serve Cash or Credit

Regular **ARM 9**

Plus **LEG 9**

Premium **First 9 Born**

"Let our advance worrying become advance thinking and planning."
-- Winston Churchill

At the pump Financing
No Application Refused

Regular **2707 ⁹/₁₀**

Plus **3217 ⁹/₁₀**

V-Power **4229 ⁹/₁₀**

Is Green on the Agenda?



Taking Transit to Work is the Best Way to Reduce Household Carbon Footprint

Science Applications International Corporation (2007)

Why Transit?

For Every \$1 Spent on Transit,
There is an \$8 Return

(in increased productivity, reduction of fuel consumption,
increased land values, and reduced road construction)

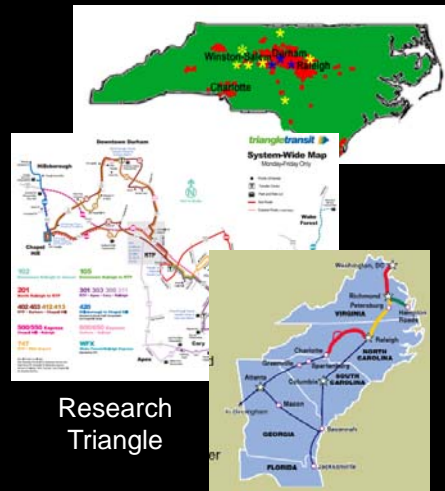
SOURCE: Cambridge Systematics



Successful (& Sustainable) Economic Regions



Seattle



Research Triangle

Have Successful Transit

Competitive States

Texas

2010 Transit System Plan

- Light Rail (Red Line & Green Line)
- Light Rail (Blue Line & Yellow Line)
- Heavy Rail (Orange Line)
- Light Rail (Purple Line & Silver Line)
- Light Rail (Gold Line & Bronze Line)

2010 Bus Rapid Transit

2010 Streetcar

2010 Paratransit

2010 Transportation Mobility

North Carolina

2020 System Plan

Massachusetts

MBTA Commuter Rail System

New Hampshire

Rhode Island

Maryland

MARC

Have Expanding Transit

Global Competitors ~ Lots of Transit

China ~ Rail Map

European Union ~ Rail Map

Japan ~ Rail Map

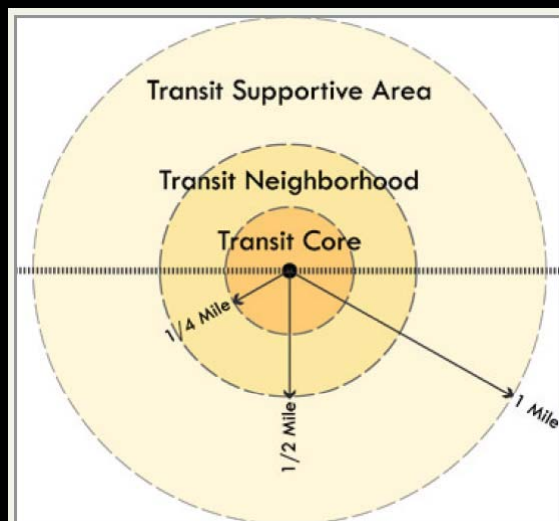
France ~ Rail Map

Germany ~ Rail Map

What is TOD ...

Transit Oriented Development

- Walkable “villages” located at & around transit stations ~ half-mile radius
- Contains broad mix of uses (such as residential, office, retail, entertainment, civic/cultural)
- Tie-into local transit (bus, trolley, etc.)
- Densities appropriate to context
- More compact than surrounding areas
- Built around civic plazas & community spaces
- Appropriate treatment of parking (shared, reduced & structured)



Station Area: 1/2-mile (approximately 500 acres) around a transit station, composed of the “Transit Core” and “Transit Neighborhood”

Transit Core: first 1/4-mile (approximately 125 acres) around a transit station

Transit Neighborhood: second 1/4-mile or approximately 375 acres surrounding Transit Core

Transit Supportive Area: one mile around transit station

TOD vs. TAD



- Transit Oriented
Development

vs.

- Transit Adjacent
Development

- Auto-oriented uses
- Large surface parking lots
- Suburban office campuses
- Big-box format retail
- Pedestrian unfriendly

TOD “Typology”



City Center



Town Center



Neighborhood Station



Employment Center Station

TOD “Typology”



Local Park-n-Ride



Regional Park-n-Ride



Airport / Seaport



Special Event Venue

Design Features of a Well-Planned TOD

Design Features Of Well-Planned TODs

• Demographic Suitability

- Population, households & employment within ½-mile radius around station & in larger transit shed

• Streets and Blocks

- Primary focus on pedestrians; cars are secondary
- Streets narrow enough to cross easily on foot
- Continuous sidewalks
- Blocks of 400-600 LF
- ADA accessibility



Design Features Of Well-Planned TODs

• Good Mixture of Buildings and Uses

- Mix of retail, office, restaurants, residential
- Mix of housing types & prices
- Creates 18 hours of daily activity
- “Eyes on the Street” provides natural surveillance



Design Features Of Well-Planned TODs

• Building Design & Placement

- Properly located buildings create walkable streets
- Active uses along ground floors; residential & office above
- Continuous “pedestrian itinerary” without large tracts of vacant land or surface parking lots
- Building fronts face other fronts; transition at rear property lines; windows & doors at street edge



Design Features Of Well-Planned TODs

• Proper Parking Placement & Treatment

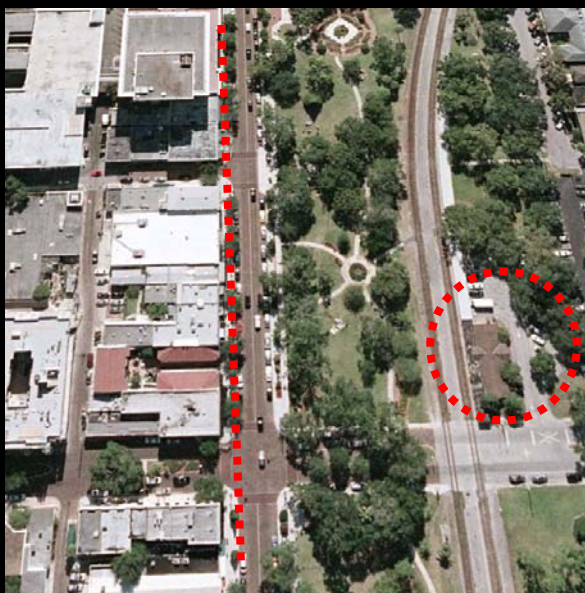
- Adequate parking, but not an oversupply
- Shared & structured parking (design & economics)
- Located to create pedestrian patrons for businesses

• Additional Considerations

- Tie-in with local transit (bus, trolley, other)
- Public open space
- Civic & cultural uses



TOD



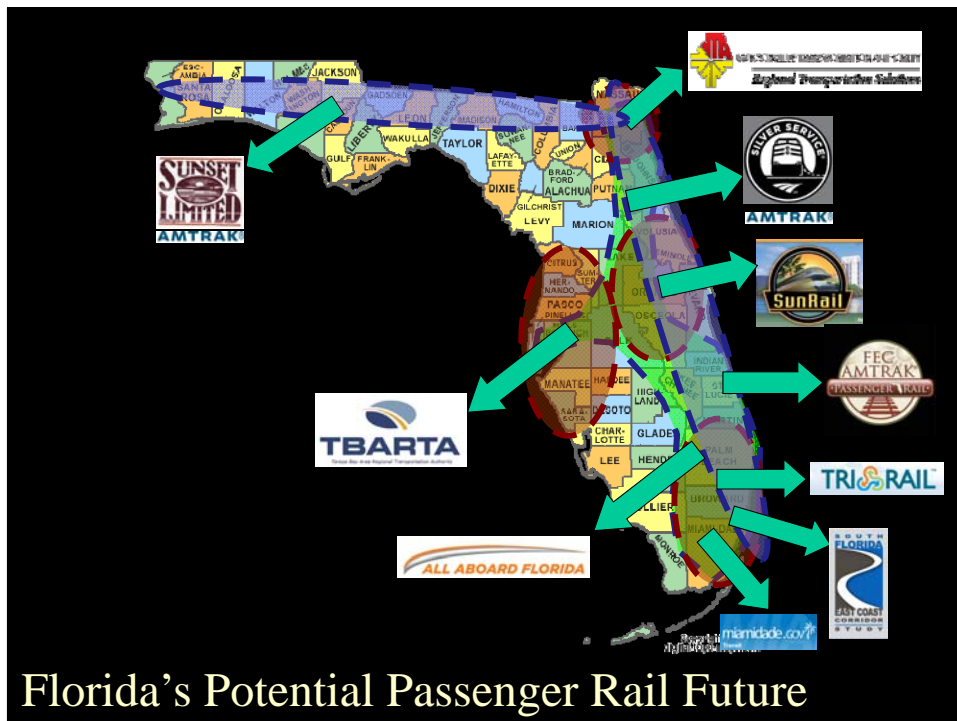
Winter Park, Florida

TAD



Pompano Beach, Florida

Different Transit “Technologies”



Florida’s Potential Passenger Rail Future



Florida
Transit-Oriented Development









Florida TOD Guidebook

Statewide Training:
Fall 2012

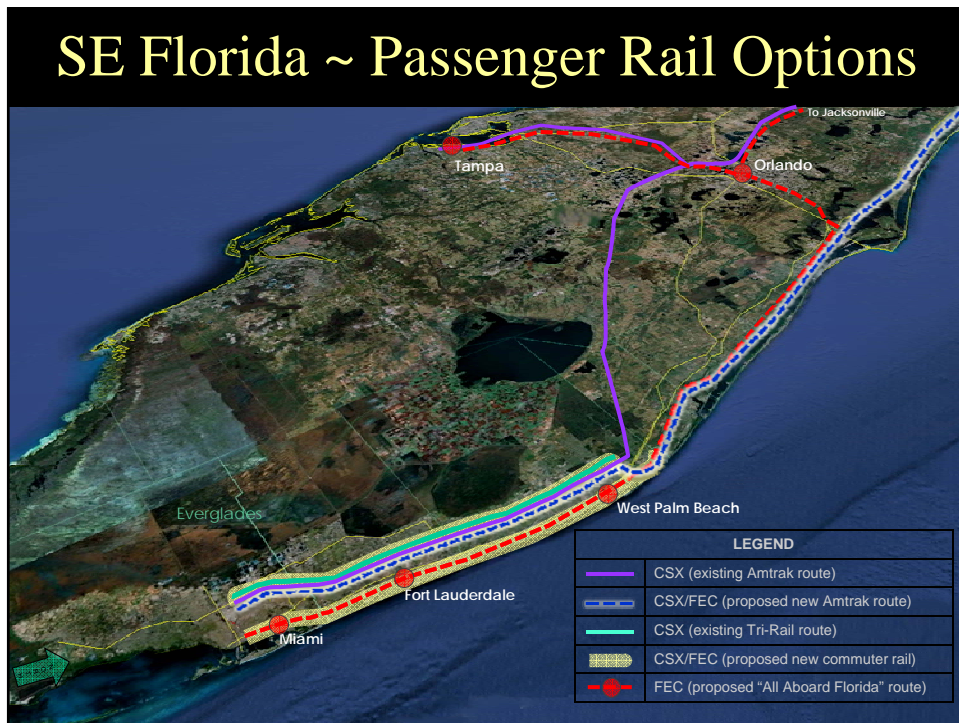
Research & Bibliography

Florida Place Type Analysis

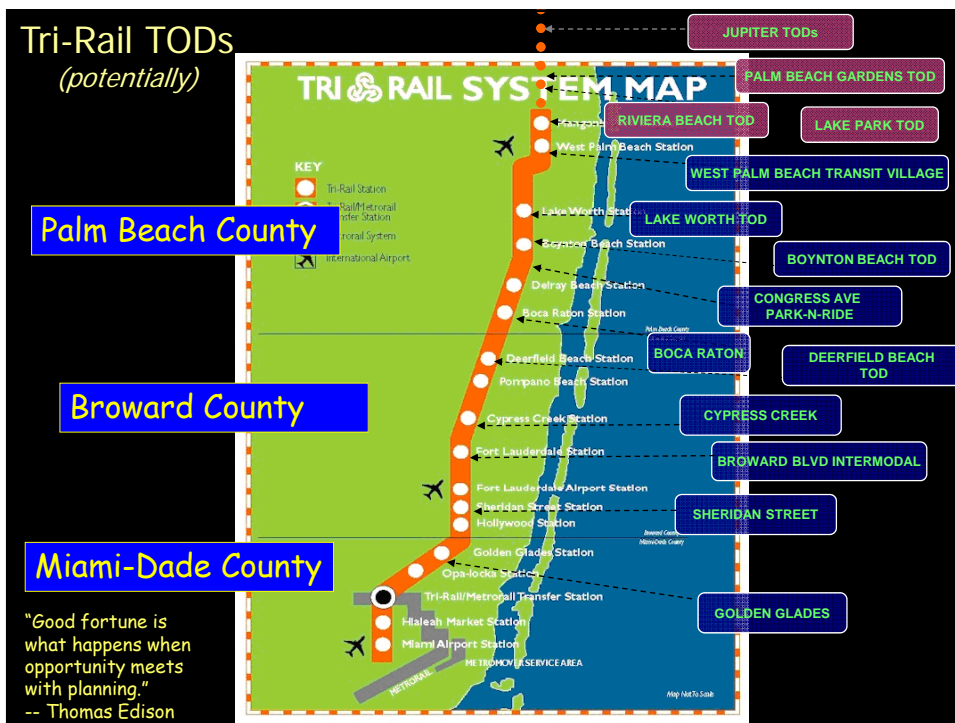
Model Plans & Regulations
(Comprehensive Plans, LDRs)

Statewide Training

www.fltod.com



The Tri-Rail System



West Palm Beach Transit Village

- Multi-Agency TOD Charrette (2005-06)
- City -- Updated Plans & Codes (2007-09)
- County – RFP Issued for Phase 1 (2010)
- County – Developer Selected (2012)
- Future Phases Anticipated (2013 & beyond)



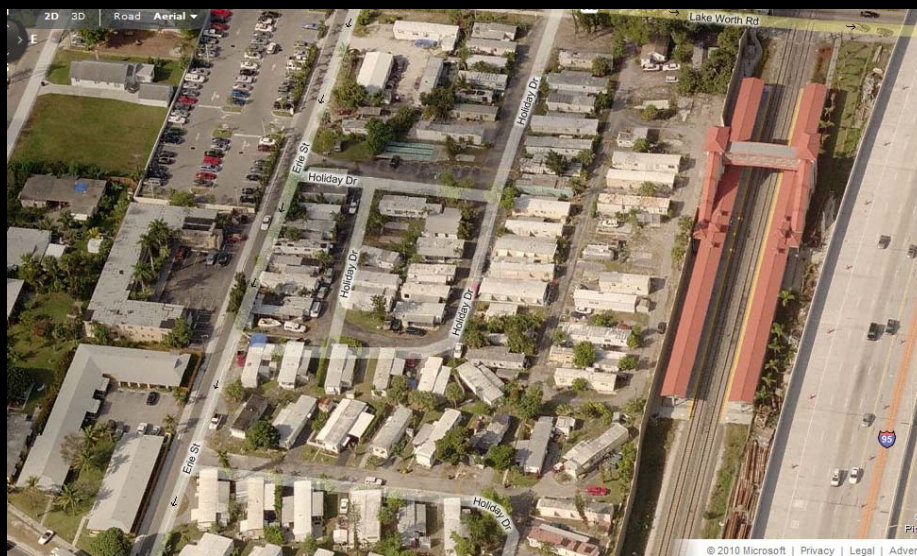
The View Today from the Station ...



The Future ...



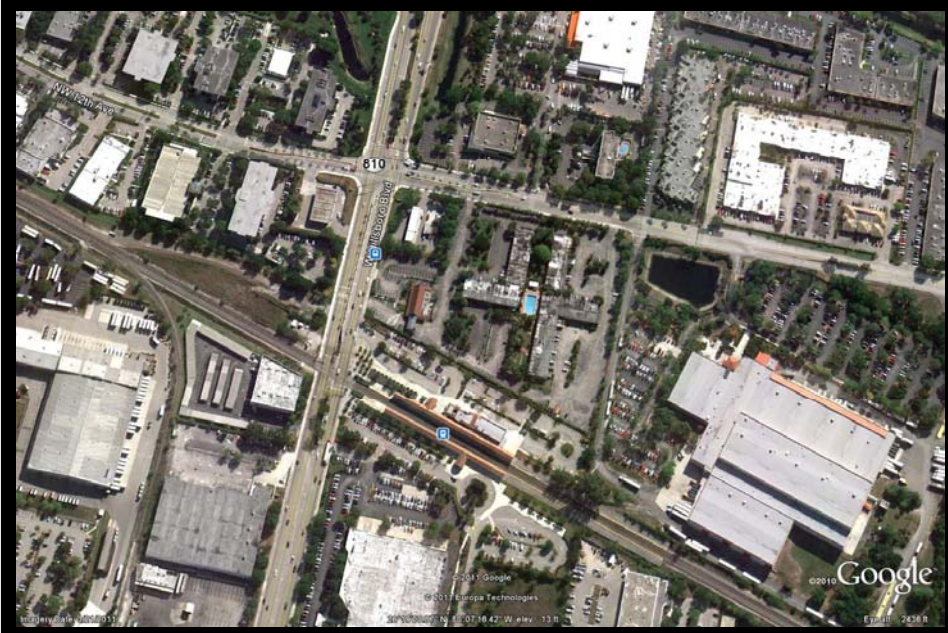
Lake Worth Tri-Rail Station



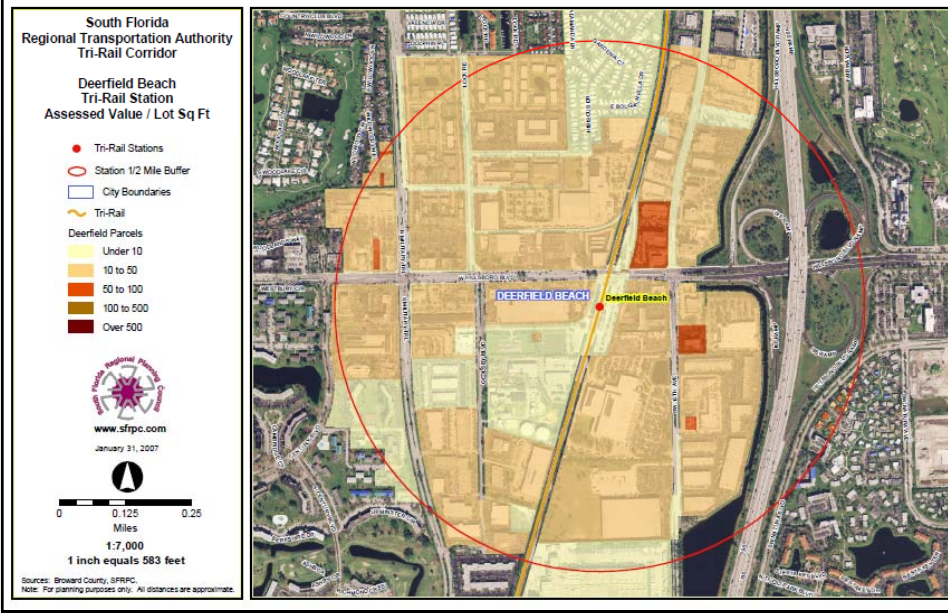
Lake Worth Station – Transit Village



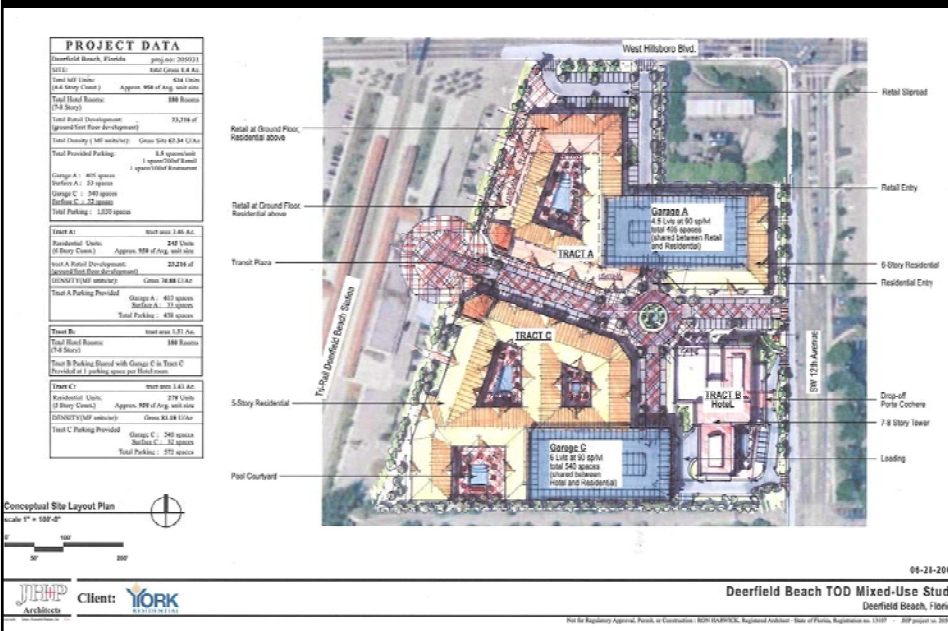
Deerfield Beach Tri-Rail Station



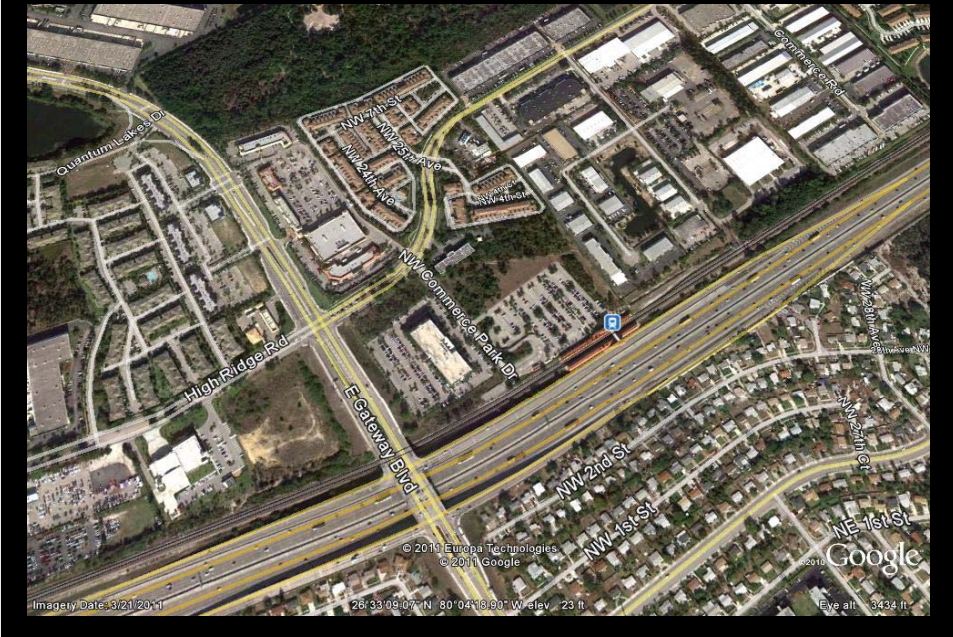
Deerfield Beach Tri-Rail Station



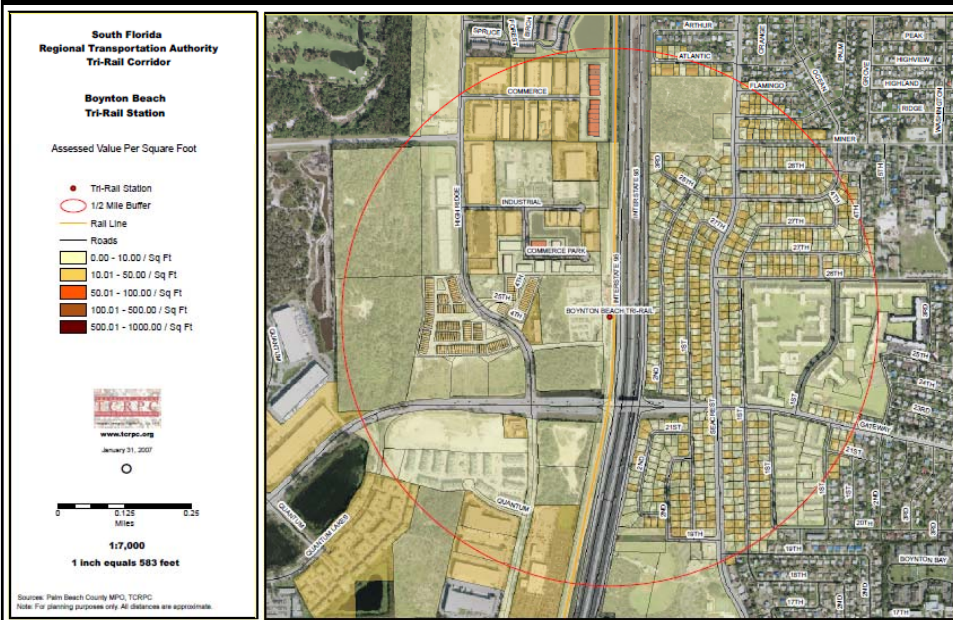
Deerfield Beach – TOD Concept



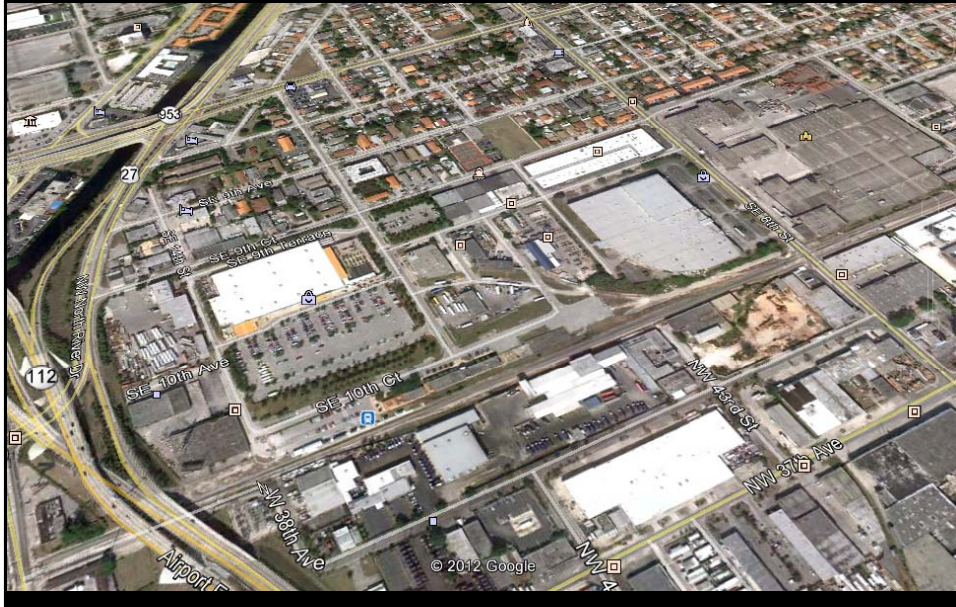
Boynton Beach Tri-Rail Station



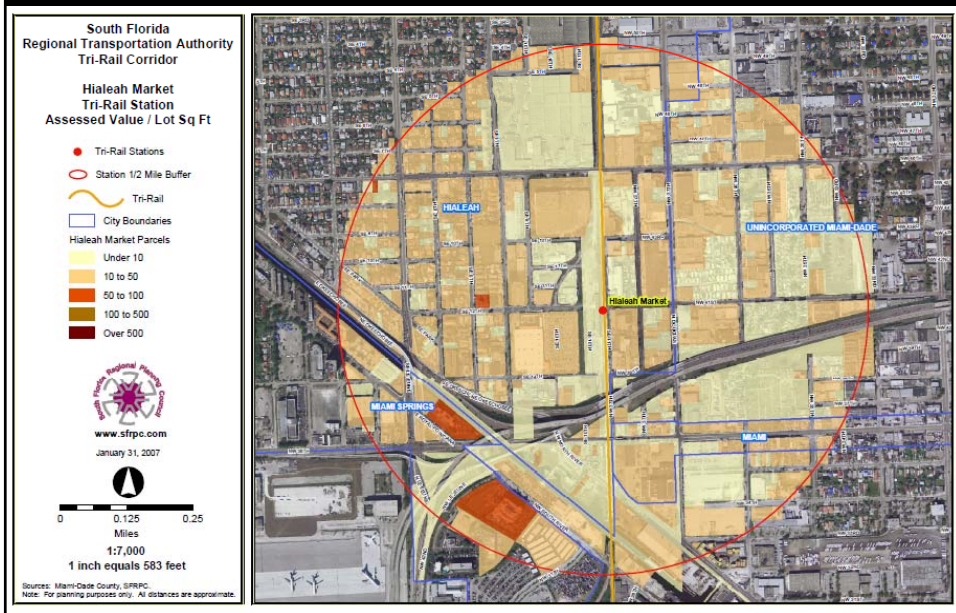
Boynton Beach Tri-Rail Station



Hialeah Market Tri-Rail Station



Hialeah Market Tri-Rail Station

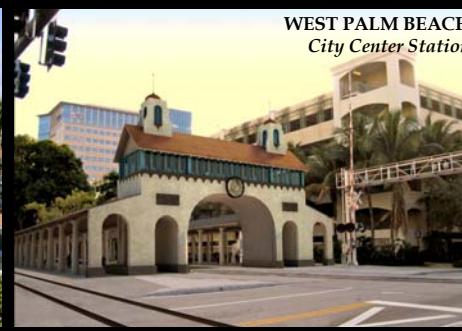


South Florida East Coast Corridor Study

- Integrated Network
 - Tri-Rail
 - County Transit Service
 - MetroRail / MetroMover
- Combination of local & express services
- 52 New Potential Station Locations on the FEC Corridor



SFECC Study ~ Station Planning





TOD - What To Expect in the Future?

- More Transit Planning (state-wide)
- More Transit Project Funding & Construction
- More TOD Planning (state-wide)
- Transit Corridors = Rising Demand for Housing
- Increasing Public / Private Dialogue
- As Fuel Costs Rise => Transit Ridership Skyrockets



Image from Shailendra Singh © 2010

KIM DELANEY, Ph.D.
STRATEGIC DEVELOPMENT COORDINATOR
TREASURE COAST REGIONAL PLANNING COUNCIL
(772) 221-4060
KDELANEY@TCRPC.ORG