

we make housing affordable

**Florida Housing**  
Finance Corporation

# Basics of Mapping in FHFC New Mapping Software

227 North Bronough Street, Suite 5000  
Tallahassee, Florida 32301  
850.488.4197 • 850.488.9809 Fax

[www.floridahousing.org](http://www.floridahousing.org)

Esri World Geocoder



The user of this External Mapping Application acknowledges and accepts that the content and information provided in this External Mapping Application is provided for information purposes only. While reasonable efforts have been made to ensure the accuracy of the content and information provided in the External Mapping Application, with the exception of LDAs, RECAP, and Area of Opportunity designations, which are determined by Florida Housing Finance Corporation, Florida Housing makes no representation as to the accuracy of the content and information. Any reliance placed on the accuracy of the content and information provided in the External Mapping Application is at the user's own risk.

**Read, understand, and acknowledge the disclaimer to access the mapping application.**

I agree to the above terms and conditions

OK

0 30 60mi  
Move mouse to get coordinates

# Creating Basic Maps

Florida Housing Finance Corporation External Beta Web Mapping Application

Esri World Geocoder

Location Search Box

Toggle Zoom

Open Data Layer List

Change Base Map Appearance

Scale

Cursor Coordinates

Print

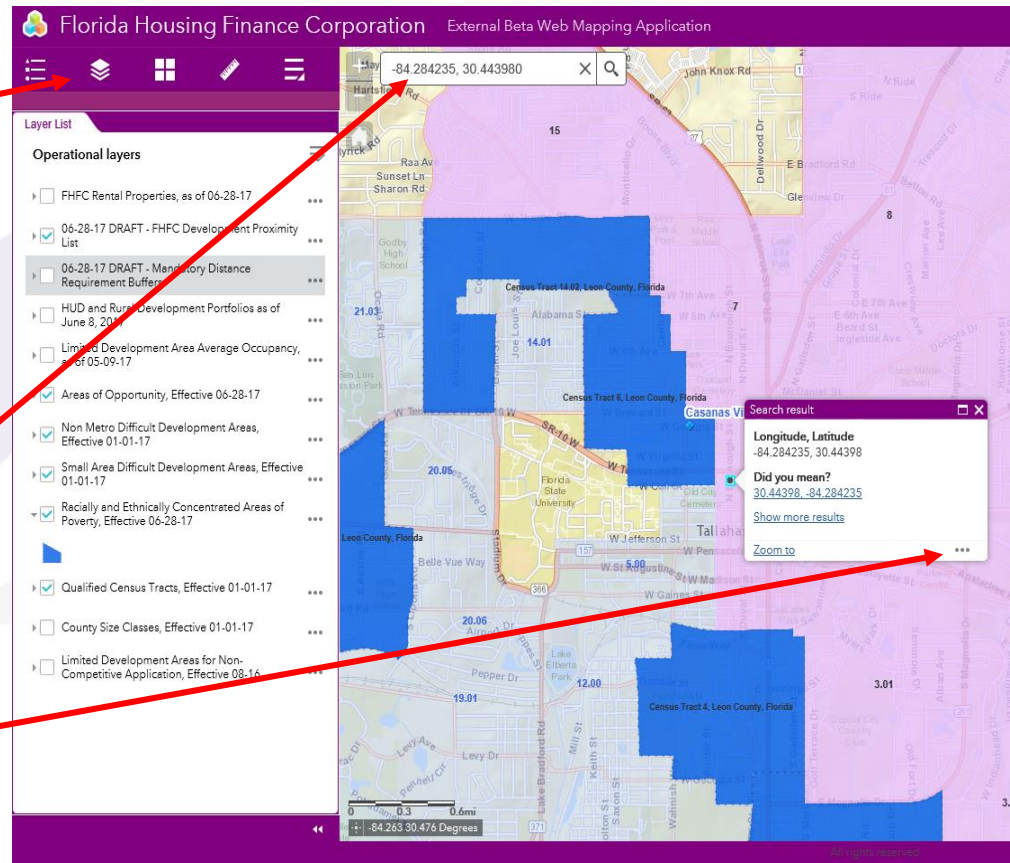
Scale: 0 30 60mi

Cursor Coordinates: -86.456 31.129 Degrees

Powered by Esri, HERE, Garmin, NGA, USGS, NPS

# Opening Map Layers and Finding a Location

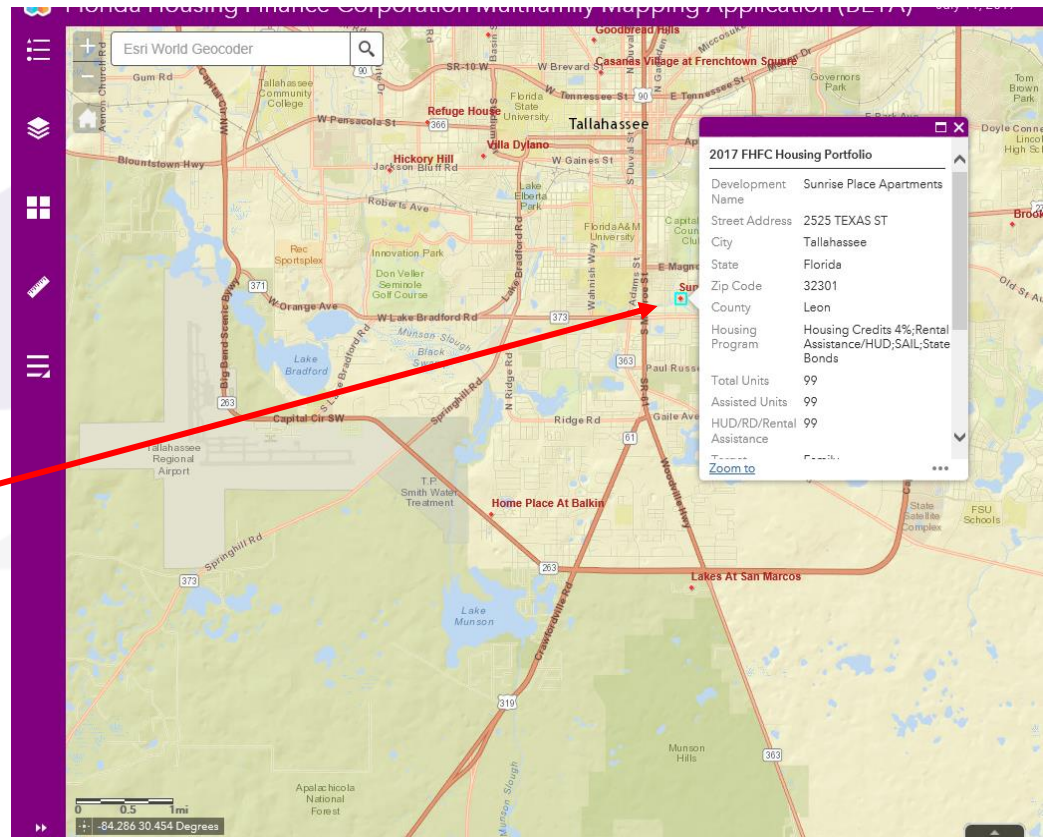
- Click on the Layers icon.
- Check the box to display a data layer. Click on the layer to display the symbol legend.
- Type in a location in the search box. Use street addresses or latitude and longitude coordinates (decimal degree format, with longitude coordinates represented first, then latitude).
- To add a marker for the property that was found, click the ellipses within the popup.



# Learn More About Existing Properties

When viewing data layers, users can learn more about features on maps.

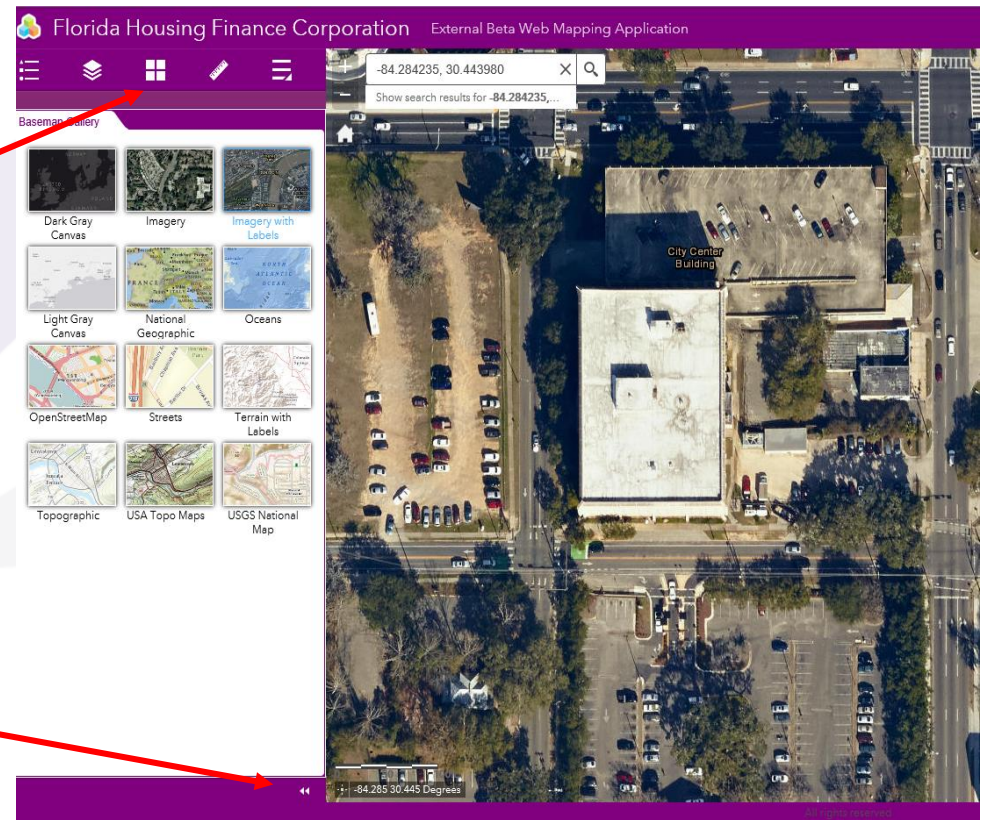
For instance, to access additional data for a property that is part of a data layer, click on that property. This will open the popup, making detailed information about the feature visible.



# Customizing the Appearance of the Map

Change the Base Map to customize the view

Collapse the left-hand options to increase the viewing area.



we make housing affordable

**Florida Housing**  
Finance Corporation

Please send any  
comments or concerns to:

[FHCommunications@floridahousing.org](mailto:FHCommunications@floridahousing.org)

227 North Bronough Street, Suite 5000  
Tallahassee, Florida 32301  
850.488.4197 • 850.488.9809 Fax

[www.floridahousing.org](http://www.floridahousing.org)