



Brisa® Original

Ultrafabrics

Composition:

100% Polyurethane

100% Reinforced Rayon Backing

Application:

Width: 137cm

Weight: 310/315g/square metre

Price band 4

Standards:

Abrasion Resistance: ASTM D4157 / 200,000-300,000 Double Rubs (Wyzenbeek).

BS 2543 / 120,000-160,000 Rubs (Martindale)

Flammability: • ASTM E84 (Adhered) - Class A. CA TB 117-2013 - Pass

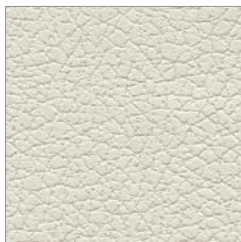
FMVSS 302 & 95/28 Annex IV – Pass. NFPA 260 - Class 1. UFAC - Class 1

Light Fastness: AATCC 16.3, 200 Hours, Grade 4-5

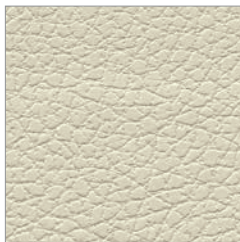
Fastness to Rubbing: AATCC 8, Class 5 Wet & Dry

Colour Matching: Batch to batch variations in shade may occur within commercial tolerances.

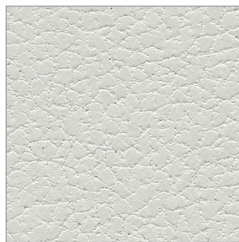
Maintenance: Vacuum regularly. Wipe clean with a damp cloth.



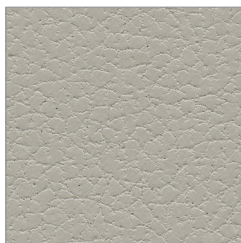
White
56B44 533-5747



Birch
56B13 533-3019



Moon
56B62 533-3277



Wishbone
56B61 533-3276



Bone
56B23 533-3822



New Sand
56B33 533-3946



Ginger
56B17 533-3051



Desert Clay
56B27 533-3864



Cream
56B26 533-3863



Bark
56B31 533-3914

Brisa® Original



Mystic Beige
56B68 533-3775



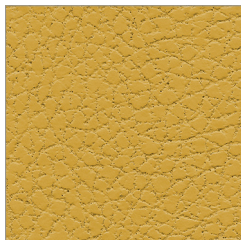
Shiitake
56B14 533-3022



Koi
56B65 533-8202



Peat
56B20 533-3200



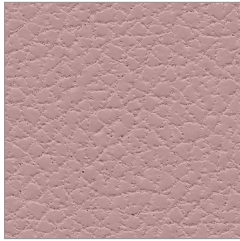
Yukon Gold
56B73 533-8269



Aztec
56B24 533-3823

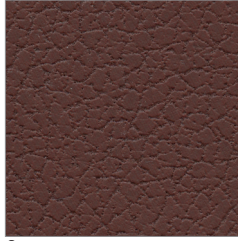


Caramel
56B21 533-3591



Ice Pink
56B71

533-6596



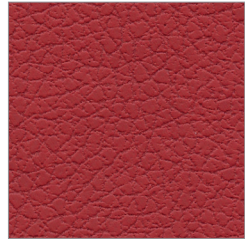
Canyon
56B25

533-3825



Cinnabar
56B48

533-8245



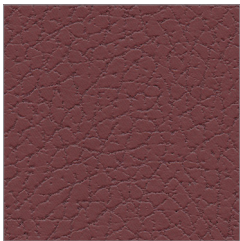
Pompeian Red
56B03

533-1383



Rose Red
56B01

533-1344



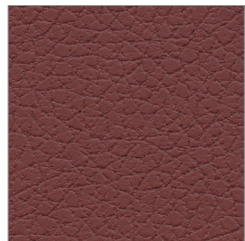
Beet Root
56B54

533-1361



Cabernet
56B52

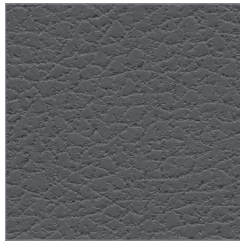
533-9400



Salsa
56B02

533-1373

Brisa® Original



Hazey
56B70 533-5360



Abyss
56B51 533-9378



Truffle
56B30 533-3913



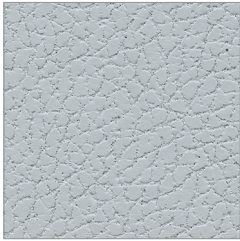
Coffee Bean
56B15 533-3023



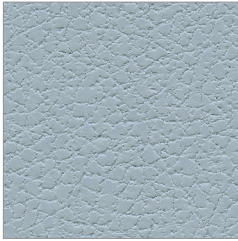
Putty
56B32 533-3915



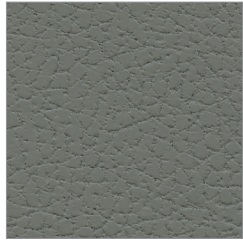
Quicksilver
56B47 533-5820



Clear Quartz
56B69



Iceberg
56B59



Ash
56B46



Honeydew
56B72



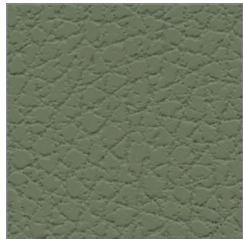
Celery
56B40



Lambs Ear
56B75



Olive
56B38



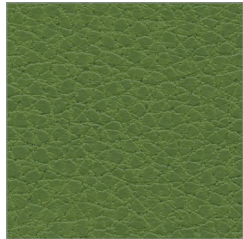
Sage
56B37



Esmeralda
56B63

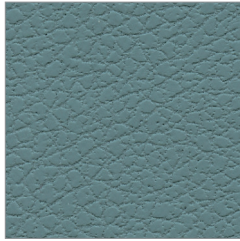


Seaweed
56B64

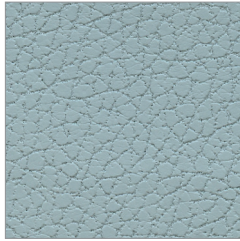


Apple Green
56B35

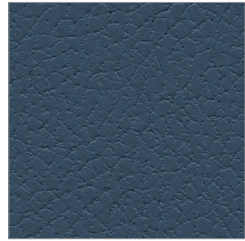
Brisa® Original



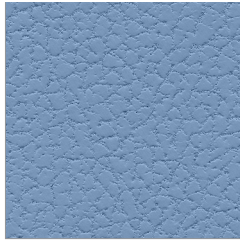
Mineral
56B11 533-2697



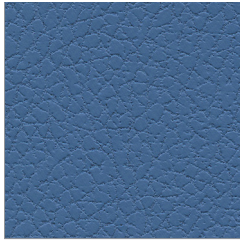
Sterling Blue
56B12 533-2698



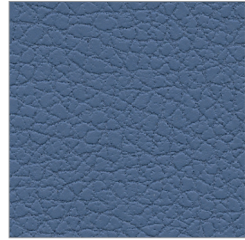
Blue Sea
56B56 533-2621



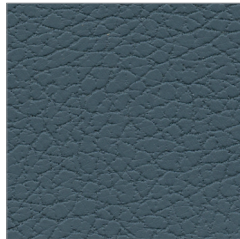
Harbor Mist
56B74 533-2793



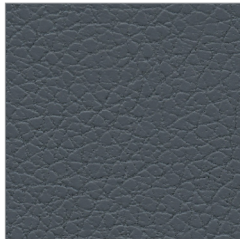
Rising Tide
56B76 533-2794



Skyway
56B10 533-2696



Cambridge Blue
56B07 533-2645



Wrought Iron
56B43 533-5703



Evening Blue
56B55 533-2620



Night Navy
56B09 533-2694



Indigo
56B08 533-2683



Black Onyx
56B45 533-5749