

# Local Guide to Community Organizations and Civic Groups

Behavioral Health. Child Care & Development. Disabilities. Educational Programs. Food & Nutrition. Health Care. Homeless Services. Job Training. Legal Services. Mental Health. Physical Therapy. Senior Services. Social Services. Substance Use. Support Groups. Volunteer Opportunities. Youth Programs. **Find. It. Here.**



[www.linktr.ee/KCLMB](http://www.linktr.ee/KCLMB)

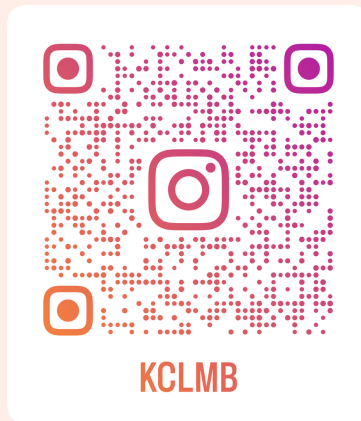
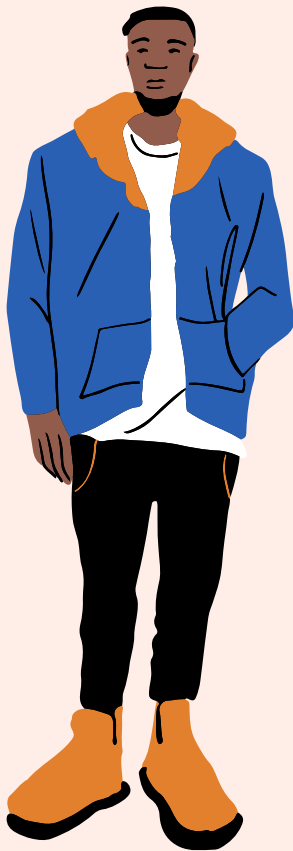


# FOLLOW US

# KCLMB

## KENT COUNTY LOCAL MANAGEMENT BOARD FOR CHILDREN, YOUTH, & FAMILIES

### PROGRAMS, PLANS, GRANTS, ADVOCACY



**OR VISIT [LINKTR.EE/KCLMB](https://linktr.ee/kclmb)**

## KEY FACTS TO BETTER UNDERSTAND

# Kent County MD

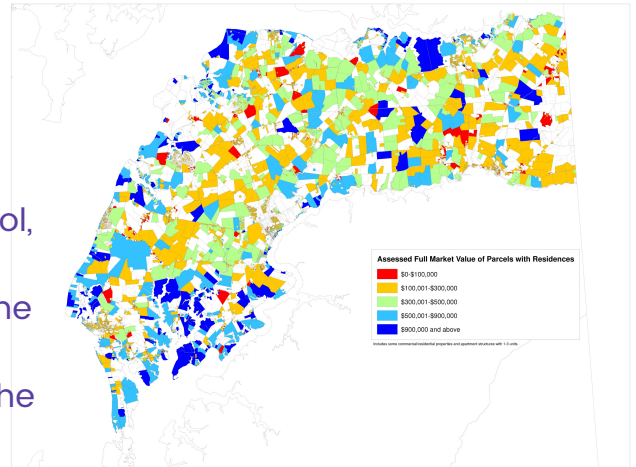
## History to be Proud of

In 1790 Kent County contained the centre of population of the United States. It is on the edge of a cornfield at 39.16.30 N 76.11.12 W.

Henry Highland Garnet and Harriet Shepherd are from Kent County. Harriet Tubman and Frederick Douglas were from just south of here.

## Did we say small?

- County with the smallest population in the State - 19,198 (2020 census)
- Smallest school district in MD - just 1,800 PreK-12 students in 5 buildings. 1 High School, 1 Middle School, and 3 elementary.
- Getting smaller and older - We lost 5% of the population in the last census, the third highest rate in MD. The median age is 48, the third oldest in MD.



## Rural and Artsy

### Dont forget the MD

Kent County in Maryland and Kent County in Delaware are two of twenty-two counties or parishes in the United States with the same name to border each other across state lines.

### More Work in Service than on Farms

There are 367 farms in Kent County, and Kent ranks #1 in MD for producing eggs and hogs. Of Kent's 9,000 workers, 3,600 are in management, science or arts, and just 612 are farmers.

### Arts and Entertainment

Chestertown is a state designated Arts & Entertainment District and attracts an impressive array of artists and events, as does Rock Hall.

## Economic Mobility

Kent County ranks #1 of MD counties with the percent of people living in DEEP poverty (below 50% of the federal poverty line).

## Civic Engagement

Kent County has 346 registered non-profits and ranks in the 75th percentile for residents who volunteer. Voter turn out is high, at around 60%.

## Peace & Safety

Crime in Kent County is at a 10 year low, with violent crimes rarely happening.

### Arts and Culture

1. [Kent Cultural Alliance](#) – Connecting residents to important civic and social conversations using artistic and cultural experiences as a conduit for connection. They provide artist grants and coordinate events like the annual Poetry Festival, art walks, and productions.
2. [Garfield Theater](#) – Live Playwrights Society, Open Mic, Community theater productions, Concerts
3. Chestertown [RiverArts](#)
  - a. Kidspot Children’s Arts program
  - b. Clay Studio
  - c. Photography Club
  - d. Plein Air Group
  - e. Classes
4. [Chester River Chorale](#) – amateur Chorale with up to 80 members
5. [Church Hill Theater](#) – Community theater
6. [Historical Society of Kent County](#), The Bordley History Center
  - a. Architectural Walking Tour
  - b. Community, Prosperity, & Resilience African American Walking Tour
7. [The Mainstay](#) - performing arts venue in Rock Hall
8. [Museums](#):
  - a. African American School House, Worton
  - b. Cliff’s Schoolhouse – Quaker Neck Rd
  - c. Kent Museum, rural heritage – Turners Creek
  - d. Betterton Heritage Museum
  - e. Eastern Neck National Wildlife Refuge Visitor Center
  - f. Knock’s Folly Visitor’s Center
  - g. Massey Air Museum
  - h. Monument Park, Chestertown
  - i. Past is Present Archaeology Lab, WAC
  - j. Sumner Hall or on FB @CharlesSumnerPost
  - k. Rock Hall Waterman’s Museum
9. [Small Towns Big Artists](#) – a project of performing artist Teverly Swinson

### Environmental

1. [Shore Rivers](#) – Works to protect and restore Eastern Shore waterways through science based advocacy, restoration, and education.
2. [Sultana Foundation](#) – Outdoor education organization with a 1786 schooner Sultana replica as a living classroom.
3. [Eastern Shore Land Conservancy](#) – Land Conservation advocacy organization

## Guide to Organizations and Groups in Kent County

4. [Chestertown Environmental Committee](#) – town volunteer committee to advise Mayor & Council
5. Betterton Beach Clean Up : Annual event to clean up the beach, every April  
<http://www.kentparksandrec.org/events.php>

### Children and Youth

1. [Minary's Dream Alliance](#) – Black owned and led youth organization, home to the Teen Clubhouse, weekly food deliveries, a community garden, Minary's Dream Academy at Kent County Middle School, and many other partnerships.
2. [Elementary After School Program](#): Kent County Parks and Recreation
3. [Boys and Girls Club](#) Before School Programs and Club on the Go
4. Town Recreation Commissions – support and organize recreational events and activities:
  - a. Rock Hall
  - b. [Chestertown](#)
5. Echo Hill Outdoor School; ages 8 and up [www.ehos.org](http://www.ehos.org)
6. [Kent Family Center](#) – family support center for parents with children under 3 years
7. Imagination Library Kent County – free monthly books mailed to children under 5, funded by local partners like the Judy Center and the Friends of the Library.
8. [The Judy Center](#) at Henry Highland Garnet Elementary School – support for families with children 0-5 in the Garnet catchment area.
9. [Big Brothers Big Sisters of the Eastern Shore](#) – community-based mentorship
10. [Character Counts!](#) Kent County – community volunteers engaging with classrooms to encourage kindness and strong ethical values
11. [Next Generation Scholars](#) – cohort support for students between 8<sup>th</sup> grade to graduation
12. [Operation G.L.O.W.](#) (Girls Learning Our Worth) – community-based mentoring group
13. [Rising Sons](#) – community-based mentoring group for boys

### Education

1. [Open Doors Education](#) – literacy tutoring, free for public school students
2. [Kent County American Job Center](#) -unemployment and job search support
3. [Kent County Learning Center](#) – community-based tutoring in Rock Hall
4. [Horizon's](#) Kent and Queen Anne's – summer academic and recreational program
5. [Chesapeake College](#) on Maryland's Eastern Shore @chesapeakecollege
  - a. Adult Basic Education
  - b. English as a Second Language Classes
  - c. Chesapeake Child Care Resource Center

### Clubs, Groups and Civic Organizations

1. Kent County Parks and Recreation [registration site](#)
  - a. Adult Co-Ed leagues: Pickleball, Indoor Soccer, Softball, Kickball, Cornhole, Yoga

## Guide to Organizations and Groups in Kent County

- b. Youth basketball, soccer, quickball, wrestling, etc.
  - c. Kent County [Community Center](#)
2. Kent County Family [YMCA](#) – youth programs, gym, indoor pool, etc.
3. Garden Club – gardening design and support in public spaces
  - a. [Chestertown](#)
  - b. [Rock Hall](#)
4. [4-H](#) Community Club Program, children 5-18
5. Church groups:
  - a. [Bethel](#) African Methodist Episcopal (A.M.E.) - Chestertown
  - b. [Presbyterian Church of Chestertown](#) – Youth Group, Matthew 25 focusing on congregational vitality, structural racism, and systemic poverty.
  - c. [Hope Fellowship](#) (Celebrate Recovery, Connect Groups, Youth Events),
  - d. [Chestertown Baptist](#) – Pick Up Indoor Soccer, Bingo, Archery
  - e. [The Sower](#)
  - f. [Hope Community Alliance](#) Rock Hall food pantry, clothes, laundry
  - g. [Unitarian Universalists of Chester River](#) – Social Justice, LGBTQ, Environmental, and Service Project committees
  - h. Sacred Heart Parish (Catholic) – [San Marcos, Guatemala](#) sister relationship
  - i. Shrewsbury Parish (Episcopalian), Kennedyville
    - i. [Sagrada Familia de Jesus Parish](#) – Spanish speaking congregation
  - j. St. Dennis Catholic Church – Galena
    - i. Spanish Mass Sundays at 11:00
  - k. St. Clements Episcopal Church
    - i. Spanish Mass and ESL classes/activities
  - l. Mt. Olive A.M.E. Church – food pantry and community activities
  - m. New Christian Chapel of Love – Lil Saints mentoring group
  - n. [Chester River Friends Meeting](#) (Quaker) – meet at Presbyterian Church
6. [Recovery in Motion](#) – peer support groups for teens, men, women, depression and anxiety, job seeker support, etc.
7. [Eastern Shore Alano Club](#) – a safe meeting place for people in recovery
8. Alcoholics Anonymous [Mid-Shore Intergroup](#)
9. [Chester Valley Minister's Association](#) – Interfaith group to coordinate mutual support. House the Good Neighbor Fund, the Martin Luther King Jr. Breakfast, and an Interfaith Thanksgiving Worship.
10. [Lion's Club](#)
  - a. Chestertown (focus on vision health)
  - b. Betterton-Still Pond
  - c. Galena
  - d. Millington
  - e. Rock Hall
11. Elks – [Chestertown](#)

## Guide to Organizations and Groups in Kent County

12. Masonic Lodge, [Chestertown](#)
13. Rotary – [Chestertown](#)
14. [American Legion](#) –
  - a. [Rock Hall](#)
  - b. [Betterton](#)
15. Kent Memorial VFW [Post #652](#)
16. [League of Women Voters](#) – women led, non-partisan voter empowerment
17. [Sorooptimist International of Kent and Queen Anne’s Counties](#) – Int’l volunteer organization, Dream Programs for Women and Girls
18. [United Way of Kent County](#) – Grants for local organizations
19. [PFLAG Mid-Shore](#) – Monthly virtual meetings, quarterly social events, PRIDE celebrations.
20. [Social Action for Racial Justice](#) – community initiative to learn, grow, and take action against racism in Kent County.

### Public Services

1. Volunteer Fire Companies: [Chestertown](#), [Betterton](#), [Kennedyville](#), [Millington](#), [Galena](#), [Rock Hall](#)
2. [Kent County Public Library](#): Branches in Chestertown, Rock Hall, and Galena
3. [Mid Shore Pro Bono](#) – free legal aid for low-income residents
4. [Community Mediation Upper Shore](#) – conflict resolution services through mediation, education, and training

### Behavioral Health and Disability Services

1. [Kent County Local Care Team](#) – A multi-agency forum that meets with families to build a custom tailored, family driven action plan to align the appropriate resources. A service of the Kent County Local Management Board.
2. [Eastern Shore Mobile Crisis Sante Group](#) – Crisis hotline, mobile crisis team, safe stations, school-based intervention services, Crisis Intervention Team and education, and Critical Incident Stress Management. **If you are with a person experiencing a mental health crisis, call Sante instead of the Police. 888-407-8018**
3. [For All Seasons, Inc.](#) – Behavioral health and rape crisis center. Text or Call 24/7 English: 410-820-5600 Spanish 410-829-6143
4. [Easter Seals Camp Fairlee](#) – recreation and respite facility for individuals with special needs on a 250 acre campus on Fairlee creek.
5. [Family Resource Center](#) for parents and professionals with children with disabilities
6. Kent Association for Riding Therapy, Inc. ([KART](#)) – therapeutic riding related services for children and adults with special needs.
7. [Kent Center](#) – services for adults with developmental disabilities
8. [Bridges](#) at Worthmore Equestrian Center – personal growth and learning through equine activities

## Guide to Organizations and Groups in Kent County

9. [NAMI Kent and Queen Anne's County](#) – volunteer-based org to provide education, advocacy, and support groups for people affected by mental illness.
10. [The Arc of Central Chesapeake Region](#) – Programming and advocacy for people with intellectual and developmental disabilities.
11. [Crossroads Community](#), Inc. – Behavioral health rehabilitation services
12. [Maryland Coalition of Families](#) – Connecting families with children with special needs through peer support and case management.
13. [Wraparound MD](#) – care coordination services to support families and youth with intensive needs.

## Festivals and Events

List of Events and Dates: [www.kentcounty.com/events/annual](http://www.kentcounty.com/events/annual)

[Subscribe for Weekly Town Events Email \(Chestertown\)](#)

1. Martin Luther King Jr. Breakfast, January
2. Poetry Festival – April 8-9, 2023
3. Rhythm & Brew - March/April
4. Chestertown Tea Party – Memorial Day Weekend : all food sales by and for civic orgs.
5. Youth Fishing Derby - June
6. Kent County Fair - July
7. Paint the Town, Chestertown (RiverArts) - May
8. Dogwood Festival of Galena - May
9. National Music Festival – June
10. Back Yard Bash, Recovery in Motion – June
11. Guardian of the Pearl Rock Fish Tournament - June
12. Fourth of July in Kent County
13. National Night Out Kick Ball Tournament – August 2<sup>nd</sup> (Youth and Criminal Justice Partners)
14. Betterton Day - August
15. Pirates and Wenches Weekend - August
16. Legacy Day – August
17. Special Olympics – August
18. First Fridays – Downtown Chestertown, all year
19. Rock Hall Scrapple Festival – Sept. 3<sup>rd</sup> @ Rock Hall Volunteer Fire Company
20. Imagine Street Festival (RiverArts) – September
21. Kent County Volunteer Fair - September
22. Chestertown Jazz Festival - September
23. Rock Hall FallFest - October
24. Chestertown Harry Potter (HP) Festival - October
25. Sultana Down rigging - October
26. Chestertown RiverArts Studio Tour - October



## Guide to Organizations and Groups in Kent County

27. Dickens of a Christmas Weekend – December
28. Soroptimist Festival of Trees – December 2-4

### Housing

1. [Kent Attainable Housing](#) – building or renovating affordable housing and partnering with low-income, working families to prepare for and buy a home.
2. [Kent County Coalition on Homelessness](#) - new initiative (2022) to provide housing and wraparound services for the homeless.
3. [Maryland Rural Development Corp.](#) (a [Community Action Agency](#)) – Programs and Services for low-income families, like Head Start, First time home buyer assistance, and emergency rental assistance.
4. [Rebuilding Together Kent County](#) – home repairs and rehabilitation for vulnerable seniors, those living with disabilities, and families with limited resources.
5. [Samaritan Group](#) – Volunteer run organization that coordinates the 3-month winter shelter and provides emergency financial assistance during the other months of the year.

### Health and Social Services

1. [American Red Cross, Upper Chesapeake Chapter](#) – assists with emergency financial assistance, disaster response (including home fires), and blood drives.
2. [Food Pantries](#)
  - a. Kent Community Food Pantry
  - b. 7<sup>th</sup> Day Adventist Food Pantry
  - c. Feed the Elderly Initiative at Minary's Dream Alliance
  - d. Millington Food Pantry
  - e. Hope House Food and Clothing Pantry
  - f. Mt. Olive A.M.E. Food Pantry
3. [Kent County Dept. of Social Services](#) – State entitlement programs like EBT cards, Child Protective Services, State Guardianships, and other services.
4. [Kent County Health Department](#)
  - a. Kent County Behavioral Health
5. [Chester River Hospital Auxiliary](#) – volunteer at Hospital and run Nearly New thrift store
6. [Compass Regional Hospice](#) -hospice care, supportive care, and grief services
7. [Mid-Shore Council on Family Violence](#) – central point of support and services for all victims of domestic violence
8. [Women in Need](#) – non-profit thrift store supporting families with scholarships, business empowerment programming, grants, and household item donations for those in need.
9. [Good Neighbor Fund](#)/Red Cross/Samaritan Group Emergency Financial Aid – volunteer run space to help individuals and families pay bills and cover immediate needs.
10. [Maryland Women, Infants & Children Program \(WIC\)](#)
11. [Eastern Shore Area Health Education Center](#)

## Guide to Organizations and Groups in Kent County

12. [Healthy Families Home Visiting Program](#)
13. [Infants and Toddlers Early interventions Program](#)
14. [Animal Care Shelter of Kent County](#)

### Senior Services

1. [HomePorts, Inc.](#)
2. [Upper Shore Aging, Inc Amy Lynn Ferris Center](#)

### Transportation

1. [American Cancer Society Transportation](#)
2. [Chestertown Lions Club Drive for Sight](#)
3. [Delmarva Community Transit](#)
4. [Delmarva Craft Seasonal Shuttle](#)

### Public Meeting Spaces

1. Volunteer Fire Companies – [Rock Hall](#) Volunteer Company has the largest meeting space in the County! Also, [Chestertown](#), [Kennedyville](#), [Betterton](#), [Galena](#), & [Millington](#)
2. [Kent County Public Library](#) – The Chestertown branch lends the use of “the little yellow building” for meetings. No charge. (Currently under renovation)
3. [Kent County Parks and Recreation](#) – reserve the gym, conference room, park pavilions, and other resources for gatherings and events
4. [Elks Lodge](#)
5. American Legions – [Rock Hall](#), [Betterton](#)
6. [Minary's Dream Alliance](#) – 8 acres of waterfront property and space for 300 people.
7. [Lelia Hynson Pavilion, Washington College](#) – adjacent to Wilmer Park
8. Kent County [Hot Desk](#) conference room
9. [United Way of Kent County](#) – 15 person conference room