



Via CFTC Portal

2nd November 2015

Mrs. Parisa Abadi
Commodity Futures Trading Commission
1155 21st Street NW
Three Lafayette Centre
Washington DC 20581

Dear Mrs. Abadi,

Pursuant to CFTC regulation §40.6(a), LCH.Clearnet SA ("LCH.Clearnet"), a derivatives clearing organization registered with the Commodity Futures Trading Commission (the "CFTC"), is submitting for self-certification some amendments to the CDS Clearing Rules and the Access Agreement (the "Rules") related to (i) the automation of the auto-repay function in the CDSClear treasury system and (ii) the access to the CDS reports. Both changes will enter into force on November 19th.

The submission changes made to the Rules are attached hereto as appendices.

Part I: Explanation and Analysis

Automation of auto-repay function:

The purpose of these change aims at reducing operational risk in LCH.Clearnet's treasury system by automating the daily CDSClear specific switch on / off of the cash auto-repay functionality and by segregating intraday cash flows from cash collateral in the treasury system to allow return of a cash flow to a CDSClear clearing member even if the auto-repay is switched off.

Access to CDS reports:

CDSClear will be migrating from the current LCAP service to a new SFTP solution. This is to provide Members with a new, faster, reliable and more secure Member Reporting service. It is intended that LCAP and the new SFTP solution will be running in parallel for three months.

CDSClear will also be offering a new interface (API) where Members can use scripts to access and download individual reports. This will also provide Members with a secure mechanism to run scripts and retrieve reports on an ad-hoc basis.

Part II: Description of Rule Changes

The impact related to the automation of the auto-repay function on the Rules is limited to Section 3 of the Procedures only. Paragraph 3.7 of this Section 3 (Appendix 1) has been amended to restrict auto-repay so that cash collateral can only be returned through the initial collateral call.

The SFTP and API solutions for access to reports are documented require the Clearing Notice "Means of Access and Reporting Mechanism" to be modified (Appendix 2) as well as Schedules 1 and 2 of the Access Agreement (Appendix 3).

Part III: Core Principle Compliance

LCH.Clearnet will continue to comply with all Core Principles following the introduction of this change and has concluded that its compliance with the Core Principles would not be adversely affected by this change.

Part IV: Public Information

LCH.Clearnet has posted a notice of pending certifications with the CFTC and a copy of the submission on LCH.Clearnet's website at:

<http://www.lchclearnet.com/rules-regulations/proposed-rules-changes>

Part V: Opposing Views

There were no opposing views expressed to LCH.Clearnet by governing board or committee members, members of LCH.Clearnet that were not incorporated into the rule.

Certification

LCH.Clearnet SA hereby certifies to the Commodity Futures Trading Commission, pursuant to the procedures set forth in the Commission regulation § 40.6, that attached rule submission complies with the Commodity Exchange Act, as amended, and the regulations promulgated there under.

Should you have any questions please contact me at: françois.faure@lchclearnet.com.



Francois Faure
Chief Compliance Officer
+33 1 70 37 65 96

APPENDIX 1

Section 3 of the Procedures extracts

3.7 EURO DENOMINATED CASH COLLATERAL

[...]

(g) Return of Euro denominated Cash Collateral

i) In respect of a Clearing Member's House Collateral Account

1- A Clearing Member may request LCH.Clearnet SA to automatically credit Euro denominated Cash Collateral recorded in its House Collateral Account which is in an amount above the House Excess Collateral Threshold to the Clearing Member's TARGET2 Account (or the relevant cash account of its TARGET2 Payment Agent) provided the amount to be credited would not result in the relevant House Margin Requirement exceeding the Margin Balance for the House Margin Account. LCH.Clearnet SA will credit the relevant amount of Euro denominated Cash Collateral at the next Initial Slot, ~~or any TARGET2 time slot in which a Variation Margin payment is due to be performed.~~

2- A Clearing Member must notify LCH.Clearnet SA of its request to have Euro denominated Cash Collateral automatically credited to the Clearing Member's TARGET2 Account (or the relevant cash account of its TARGET2 Payment Agent) by submitting the relevant form by any means as specified in a Clearing Notice by no later than 16:00 CET on a Business Day in order for the Clearing Member's request to be processed on the next following Business Day.

Once a Clearing Member has notified LCH.Clearnet SA of its request to have Euro denominated Cash Collateral automatically credited, LCH.Clearnet SA will apply it, until such time as LCH.Clearnet SA has been otherwise instructed by the relevant Clearing Member.

2- A Clearing Member may request, on an ad hoc basis, LCH.Clearnet SA to return Euro denominated Cash Collateral recorded in its House Collateral Account provided the amount to be returned would not result in the relevant House Margin Requirement exceeding the Margin Balance for the House Margin Account, as determined at the time when the request is received and processed by LCH.Clearnet SA. Where this would be the case, the Clearing Member's request will be rejected.

3- Following receipt of a request in accordance with this Paragraph 3.7(g) i), 2, LCH.Clearnet SA will credit the relevant amount of Euro denominated Cash Collateral to the relevant TARGET2 Account of the Clearing Member (or the relevant cash account of its TARGET2 Payment Agent) at the next Initial Slot, or any TARGET2 time slot in which a Variation Margin payment is due to be performed.

[...]

2015/076

9 July 2015

CDSClear - Means of access and reporting mechanism

Pursuant to the CDS Clearing Rules, this Clearing Notice ~~specifies~~ describes the following means of access ~~that are made~~ available to the Clearing Members for the purpose of having access to the CDSClear Clearing System reports and files:

- ~~the LCAP (Logical Clearing Access Point) which~~ is a virtual ~~ftp~~ FTP (File Transfer Protocol) server, available over a private connection accessible over the GMA (Group Member Access) ~~ftp pipe solution to LCH.Clearnet SA. The LCAP is a clearing gateway hosted in LCH.Clearnet SA data centres. The LCAP supplies the users with certified access points enabling the management of data flows.~~ Clearing reports are provided through ~~the LCAP~~ in a predefined format. End-users cannot generate bespoke reports. ~~They can~~ have access to and upload ~~Clearing Eligibility Reports~~ a full range of trade, risk, product, treasury and event reports, ~~have access to details of Cleared Transactions or submit a request for the purpose of changing their previous election in respect of automatic compression, via LCAP; and~~
- ~~LCH.Clearnet Portal which~~ is a single sign-on solution for various LCH.Clearnet applications, available on the internet and secured by login and password. Through the LCH.Clearnet Portal, end-users have access to ~~the Collateral Management System, the CDSClear Reporting, Backloading, Compression and Trade Lists applications. Clearing reports in a pre-defined format, are provided with real time information on their trade portfolios and may~~ End-users can download and upload files as well as extract data through .csv files;
- ~~the CDSClear SFTP solution is a non-browser based, secure FTP interface used by Clearing Member Firms for the scripted, bulk retrieval of reports on a scheduled basis. Members connect on a frequent, automatic schedule and retrieve reports, often across multiple business line, in bulk - for later processing. This is a non-user interactive interface. Access to the CDSClear SFTP solution is made through Internet or BT Radianz connection; and~~
- ~~the CDSClear Reporting API solution provides a programmatic interface where members can use scripts to access and download individual reports. Access to the CDSClear Reporting API solution is made through Internet.~~

Any amendments or modifications to the current list of means of access will be published by LCH.Clearnet SA in an updated Clearing Notice.

LCH.Clearnet SA

| [Appendix 2](#)

Website: www.lchclearnet.com

 Follow @LCH_Clearnet

Code de champ modifié

Schedule 1 SECURITY and CONTINUITY OF THE CLEARING ACCESS SOLUTIONS

1 GENERALITIES

- 1.1 The Users accept notably but not exclusively the following obligations to maintain, throughout the term of this Access Agreement, the level of logical security and control of access to the Network Services, whatever the chosen Clearing Access Solution, governed by this Access Agreement;
- 1.2 The Users must promptly cooperate with LCH.CLEARNET in responding to security incidents and report to LCH.CLEARNET any event, condition, or activity that Users become aware of that indicates a possible or actual violation of the Users access rights, deviation or breach or compromise of the security of the Network Services.
- 1.3 The Users retain full control, either directly or indirectly, over the design and implementation of its policy of administering authorisations for logical access to the Clearing Access Solution on all of its sites (production site, back-up site).
- 1.4 Any change implemented at the Users' initiative must remain compliant with security standards.
- 1.5 The Users and LCH.CLEARNET will jointly investigate on all attempts at unauthorised access with a view to determining the causes and implement the most appropriate corrective solutions.

2 CONTINUITY AND SECURITY REGARDING NETWORK SERVICES

2.1 Continuity

All network infrastructures shall comply with the following :

- resilient network equipment on Users' premises along with failover mechanisms
- resilient Users' access with no SPOF (Single Point Of Failure) based on dual carriers
- secured and fully-meshed network
- resilient central infrastructures

2.2 Security

Security regarding encryption and authentication are guaranteed by the Network Services provided by LCH.CLEARNET, with end-to-end VPN (Very Private Network) tunnelling based on IPSec protocol (VPN gateway fully-managed by LCH.CLEARNET Network Services Subcontractors).

All clearing data sent through the Network Services are secured by this VPN layer:

- Real-time messaging MMTP
- File transfer FTP
- [Secure file transfer SFTP](#)
- [Application Programming Interfaces \(API\)](#)

In addition, each LCAP is isolated on a separate DMZ on LCH.CLEARNET central infrastructure.

3 CONTINUITY AND SECURITY REGARDING LCAP CLEARING ACCESS SOLUTION

3.1 Continuity



In order to guarantee high availability and accurate performances of the LCAP, LCH.CLEARNET has implemented an architecture built on 3 levels of resiliency :

- Level 1 resiliency : Distributed Resource Scheduler (DRS) process;
- Level 2 resiliency : clusters architecture;
- Level 3 resiliency : Data Centres architecture with Disaster Recovery site;

3.2 Security

The access to LCAP is handled through a Logical Dongle authentication.

4 SECURITY REGARDING ECCW CLEARING ACCESS SOLUTION

4.1 ECCW Member Security Administrator

4.1.1 EMSA definition

The legal representative or any duly empowered representative of each User shall appoint at least one eCCW Member Security Administrator (EMSA) in charge of the management of the access to the eCCW Clearing Access Solution.

The EMSA shall have sufficient skills and independence to perform his/her tasks.

The EMSA shall be the sole point of contact for all security issues, and mainly:

- Definition/modification of member users profiles (reading / writing rights)
- Management of eCCW access cards.

The EMSA shall not use the eCCW Clearing Access Solution for any other purposes than those set out above.

LCH.CLEARNET strongly recommends the appointment of a supplemental EMSA in the event of any unavailability of the EMSA.

Mis en forme : Pas de paragraphes solidaires

4.2 EMSA responsibilities

4.2.1 User profiles management

LCH.CLEARNET will set up access to eCCW services in accordance with the terms set out on the eCCW Request Form and any instructions notified by the EMSA. LCH.CLEARNET shall make its reasonable endeavours to take into account this instruction within a reasonable delay upon receipt of the same and to the extent that such instruction is complete and compliant with the terms hereunder. This definition of profile(s) relies under the sole responsibility of the EMSA.

Mis en forme : Paragraphes solidaires

Mis en forme : Paragraphes solidaires

Mis en forme : Pas de paragraphes solidaires

All following events shall be immediately communicated to LCH.CLEARNET by the EMSA in order to update Users' accesses:

- leavers (e.g. resignation, dismissal, any cause of leaving)
- change of function
- re assignation of eCCW access cards
- loss of token or activation of eCCW access cards following de-synchronisation or loss of PIN code.

4.2.2 Handling eCCW access cards

The EMSA shall distribute eCCW access cards to the duly appointed eCCW Users.

The EMSA shall further refer and comply with the appropriate Documentation.

The EMSAs shall train the eCCW Users in particular, with respect to the Security Policy detailed hereafter.

4.3 Security and continuity



The following Security and Authentication Policy defines the eCCW security policies.

While signing the eCCW Request Form, the Users agree to comply with such Policy as detailed below and as amended from time to time.

4.3.1 Security and authentication policy

Authentication policy

The access to the eCCW Clearing Access Solution requires a unique username, a PIN code and a eCCW access card to generate the one-time password.

The user name identifies the eCCW services user and the PIN code enables the user to obtain a password from the eCCW access card. The eCCW access card generates a new password each time the user enters the PIN code.

To log into the eCCW services, the user shall enter his user name and password. The server authenticates the user and the eCCW system grants access to the user in accordance with the specifications set out in the Request Form.

A user name within the Users or any other entity identified in the Request Form enables the use of only one eCCW access card in a given environment (i.e. production and test platform for the main eCCW access card and production only for the eCCW backup access card).

User names will be provided by LCH.CLEARNET on request of the EMSA.
User names shall be meaningful enough to uniquely identify the user.
Very short names and generic names related to functions shall be prohibited.

The initial PIN is provided by LCH.CLEARNET for a fixed term. When an eCCW access card is used for the first time, the user will be requested to create a new PIN which can be changed at any time by the eCCW services user. PINs shall be kept securely and shall not be disclosed. Any change of the PIN shall be undertaken under the responsibility of the relevant eCCW services user.

The eCCW Clearing Access Solution users shall securely store their eCCW access card when they do not use the same.

Security and Back up Policy

Mis en forme : Paragraphes solidaires

eCCW user sessions shall expire after a 20 minutes period of inactivity. The workstation which gives access to the eCCW services should also be configured with a separate, shorter local time-out option (e.g. Windows Screensaver).

In any case, the Users shall be responsible for the security and correct use of the eCCW access cards provided to them by LCH.CLEARNET. Any loss or misuse of eCCW access cards shall be the sole responsibility of the Users. In that respect, LCH.CLEARNET recommends EMSAs to order eCCW backup access cards to be assigned to eCCW users in back up situations.

Those eCCW backup access cards will be active and pre assigned to any eCCW user (i.e., duplication of the eCCW main access card), and as such to be used only in replacement of eCCW main access cards.

eCCW main access cards and eCCW backup access cards shall not be and cannot be used simultaneously.

5 SECURITY REGARDING LCH.CLEARNET WEB FIXED INCOME

CLEARING ACCESS SOLUTIONS



The following Security and Authentication Policy defines the Web Fixed Income security policies.

While ordering a Web Fixed Income access Clearing Access Solutions, the Users agree to comply with such Policy as detailed below and as amended from time to time.

5.1 Authentication policy

The access to LCH.CLEARNET relevant website (Web Fixed Income) is done through a secured link and requires a unique user ID, a PIN code and an access card to generate a one-time Pass Code.

The user ID identifies the user and the PIN code is used to activate the access card that will generate one-time Pass Codes on a regular basis. Those Pass Codes are synchronized with the relevant web site in order to be recognized.

To log into the Web Fixed Income services, the user shall enter his user ID and the one-time generated Pass Code that appears on his access card at login time. The server authenticates the user and the system grants access to the user.

Mis en forme : Pas de paragraphes solidaires

5.2 Security and Back up Policy

5.2.1 Member Security Administrator

5.2.1.1 MSA definition

The legal representative or any duly empowered representative of each User shall appoint at least one Member Security Administrator (MSA) in charge of the management of the access to the Web Fixed Income Clearing Access Solution.

Mis en forme : Paragraphes solidaires

Mis en forme : Corps de texte 2, Retrait : Gauche : 0 cm

Mis en forme : Pas de paragraphes solidaires

The MSA shall have sufficient skills and independence to perform his/her tasks.

The MSA shall be the sole point of contact for all security issues, and notably the management of Web Fixed Income access cards.

LCH.CLEARNET strongly recommends the appointment of a supplemental MSA in the event of any unavailability of the MSA.

5.2.1.2 MSA responsibilities

5.2.1.2.1 User management

LCH.CLEARNET will set up access to Web Fixed Income services in accordance with the terms set out on the Web Fixed Income Request Form and any instructions notified by the MSA. LCH.CLEARNET shall make its reasonable endeavours to take into account this instruction within a reasonable delay upon receipt of the same and to the extent that such instruction is complete and compliant with the terms hereunder.

All following events shall be immediately communicated to LCH.CLEARNET by the MSA in order to update Users' accesses:

- leavers (e.g. resignation, dismissal, any cause of leaving)
- change of function
- re assignment of Web Fixed Income cards
- loss of token or activation of Web Fixed Income cards following de-synchronisation or loss of PIN code.

5.2.1.2.2 Handling Web Fixed Income access cards

The MSA shall distribute Web Fixed Income cards to the duly appointed Web Fixed Income Users.

The MSA shall further refer and comply with the appropriate Documentation.

The MSAs shall train the Web Fixed Income Users in particular, with respect to the Security Policy detailed hereafter.

5.2.2 Security

The Users are informed that this system creates an audit trail that cannot be repudiated. The users shall be held accountable for activities recorded identifying them as the perpetrators. Impersonation (Unauthorized use of one's identity and privileges) shall be avoided by protecting the secrecy user ID and access card.

The Users are responsible for taking the following precautions:

- PIN code shall not be spread over
- PIN code shall not be written on accessible documents
- access card shall be protected from the theft. If the access card is misled or stolen, LCH.CLEARNET CTH shall be informed at once to neutralize it so that it becomes unusable. LCH.CLEARNET CTH can generate a temporary password having made sure of the identity of the user.

The Users are responsible for the protection of their access cards:

- It shall not be immersed in a liquid
- It shall not be exposed to extreme temperatures
- It shall not be put under pressure
- It shall not be folded

6 SECURITY REGARDING LCH.CLEARNET WEB EGCP

The following Security and Authentication Policy defines the Web EGCP security policies.

While ordering a Web EGCP access Clearing Access Solutions, the Users agree to comply with such Policy as detailed below and as amended from time to time.

6.1 Authentication policy

The access to LCH.CLEARNET relevant website (Web EGCP) is done through a secured link and requires a unique user ID, a PIN code and an access card to generate a one-time Pass Code.

The user ID identifies the user and the PIN code is used to activate the access card that will generate one-time Pass Codes on a regular basis. Those Pass Codes are synchronized with the relevant web site in order to be recognized.

To log into the Web EGCP services, the user shall enter his user ID and the one-time generated Pass Code that appears on his access card at login time. The server authenticates the user and the system grants access to the user.

6.2 Security and Back up Policy

6.2.1 Member Security Administrator

6.2.1.1 MSA definition

The legal representative or any duly empowered representative of each User shall appoint at least one Member Security Administrator (MSA) in charge of the management of the access to the Web EGCP Clearing Access Solution.

The MSA shall have sufficient skills and independence to perform his/her tasks.

The MSA shall be the sole point of contact for all security issues, and notably the management of Web EGCP access cards.

LCH.CLEARNET strongly recommends the appointment of a supplemental MSA in the event of any unavailability of the MSA.

Mis en forme : Paragraphes solidaires

Mis en forme : Retrait : Gauche : 1,9 cm, Suspendu : 0,63 cm, Pas de paragraphes solidaires

Mis en forme : Pas de paragraphes solidaires

Mis en forme : Retrait : Gauche : 0 cm, Suspendu : 0,76 cm

Mis en forme : Pas de paragraphes solidaires

6.2.1.2 MSA responsibilities

6.2.1.2.1 User management

LCH.CLEARNET will set up access to Web EGCP services in accordance with the terms set out on the Web EGCP Request Form and any instructions notified by the MSA. LCH.CLEARNET shall make its reasonable endeavours to take into account this instruction within a reasonable delay upon receipt of the same and to the extent that such instruction is complete and compliant with the terms hereunder.

All following events shall be immediately communicated to LCH.CLEARNET by the MSA in order to update Users' accesses:

- leavers (e.g. resignation, dismissal, any cause of leaving)
- change of function
- re assignment of Web EGCP cards
- loss of token or activation of Web EGCP cards following de-synchronisation or loss of PIN code.

6.2.1.2.2 Handling Web EGCP access cards

The MSA shall distribute Web EGCP cards to the duly appointed Web EGCP Users.

The MSA shall further refer and comply with the appropriate Documentation.

The MSAs shall train the Web EGCP Users in particular, with respect to the Security Policy detailed hereafter.

6.2.2 Security

The Users are informed that this system creates an audit trail that cannot be repudiated. The users shall be held accountable for activities recorded identifying them as the perpetrators. Impersonation (Unauthorized use of one's identity and privileges) shall be avoided by protecting the secrecy user ID and access card.

The Users are responsible for taking the following precautions:

- PIN code shall not be spread over
- PIN code shall not be written on accessible documents
- access card shall be protected from the theft. If the access card is misled or stolen, LCH.CLEARNET CTH shall be informed at once to neutralize it so that it becomes unusable. LCH.CLEARNET CTH can generate a temporary password having made sure of the identity of the user.

The Users are responsible for the protection of their access cards:

- It shall not be immersed in a liquid
- It shall not be exposed to extreme temperatures
- It shall not be put under pressure
- It shall not be folded

7 SECURITY REGARDING CMS CLEARING ACCESS SOLUTIONS

7.1 Security and continuity

Mis en forme : Paragraphes solidaires

Mis en forme : Pas de paragraphes solidaires

Mis en forme : Pas de paragraphes solidaires

Mis en forme : Normal, Justifié



The following Security and Authentication Policy defines the CMS security policies.

While signing the [LCH.Clearnet](#) Portal / CMS Request Form, the Clearing Members agree to comply with such Policy as detailed below and as amended from time to time.

7.1.17.1 Security and authentication policy

Authentication policy

The access to the CMS requires a unique username and a password.

To log into CMS, the user shall enter his user name and password. The server authenticates the user and the system grants access to the user in accordance with the specifications set out in the Request Form.

User names will be provided by LCH.CLEARNET on request of the user
User names shall be meaningful enough to uniquely identify the user.
Very short names and generic names related to functions shall be prohibited.

The initial password is provided by LCH.CLEARNET for a fixed term. When user logs in for the first time, the user will be requested to create a new password which can be changed at any time by the user.

Mis en forme : Titre 2

7.1.27.2 Security and Back up Policy

CMS user sessions shall expire after a 20 minutes period of inactivity. The workstation which gives access to the CMS services shall also be configured with a separate, shorter local time-out option (e.g. Windows Screensaver).

The Clearing Member shall have in place all necessary security measures and procedures to prevent any unauthorised access to, or use of, CMS and CMS Content and the Clearing Member shall immediately notify LCH.CLEARNET in the event of any such unauthorised access or use, or if any Access Details are lost, stolen, misused or become known by any person other than the relevant Authorised User.

In any case, the Clearing Member shall be responsible for the security and correct use of the credentials provided to them by LCH Clearnet. Any misuse of the credentials shall be the sole responsibility of the Clearing Members.

The Clearing Member shall immediately notify LCH.CLEARNET on becoming aware of any unauthorised access or use, or if any of its Access Details are lost, stolen, misused or become known by any other person.

Mis en forme : Titre 2

7.1.37.3 Continuity

The Clearing Member shall procure that the Authorised Users shall comply with the terms of this Access Agreement and shall ensure that only Authorised Users to whom valid Access Details have been issued will access or use (or attempt to access or use) CMS and that Access Details are at all times kept confidential. If an Authorised User ceases to be authorised to act by the Clearing Member, the Clearing Member will immediately notify LCH.CLEARNET by using the contact details provided for this purpose to the Clearing Member by LCH.CLEARNET from time to time. The Clearing Member shall ensure the Authorised User ceases to access and use CMS immediately if it ceases to be authorised to act by the Clearing Member.

LCH.CLEARNET shall be entitled to suspend access to CMS by the Clearing Member, suspend and/or terminate access to CMS in respect of each Authorised User, and amend any or all Access Details, in each case from time to time and without prior notice to the Clearing Member or any Authorised User. Where LCH.CLEARNET notifies the Clearing Member that it is suspending or terminating an Authorised User's right to access CMS the Clearing Member shall ensure that each Authorised User ceases to access CMS until, in the case of suspension, LCH.CLEARNET advises it that such Authorised User is no longer so suspended.

Mis en forme : Titre 2

8 SECURITY REGARDING CDS CLEAR PORTFOLIO MARGIN CALCULATION TOOL

8.1 Security and continuity

The following Security and Authentication Policy defines the CDS Clear Portfolio Margin Calculation tool (PMC) security policies.

While signing the LCH.Clearnet Portal / PMC Request Form, the Clearing Members agree to comply with such Policy as detailed below and as amended from time to time.

8.1.1 8.1 **Security and authentication policy**

Authentication policy

Clearing Members ID are assigned to individual users. They are created by nominated member Super Users or internal LCH business Super Users.

User authentication to the portal LCH.Clearnet Portal and its applications is two-factor.

- 1) A user ID and password will be required to login to the service
- 2) And a 2nd factor of authentication – based on source IP address (user's computer location) is invoked via a risk-based approach. i.e. users will be prompted for additional One-Time Access Code (sent to the registered corporate email address) when the source IP is non-white listed or is from a different location

Key Rules and Controls:

A named User ID and password are issued to each individual user. User IDs must not be shared and must only be used by the named individual. User IDs must be named and not generic and associated with a recognised corporate email account. 3rd party email addresses are not be allowed.

Passwords must conform to the following rules:

- 1) Minimum 8 characters.
- 2) At least one upper case.
- 3) One number
- 4) Passwords cannot be re-used (remembers 17 recently used passwords)
- 5) Passwords must be changed on first login or after reset by LCH Security Admin teams

The access to the PMC requires a unique username and a password.

To log into PMC, the user shall enter his user name and password. The server authenticates the user and the system grants access to the user in accordance with the specifications set out in the Request Form.

User names will be provided by LCH.CLEARNET on request of the Clearing Member. User names shall be meaningful enough to uniquely identify the user. Very short names and generic names related to functions shall be prohibited.

The initial password is provided by LCH.CLEARNET for a fixed term. When user logs in for the first time, the user will be requested to create a new password which can be changed at any time by the user.

8.1.2 8.2 **Security and Back up Policy**

PMC user sessions shall expire after a 30 minutes period of inactivity. The workstation which gives access to the PMC services shall also be configured with a separate, shorter local time-out option (e.g. Windows Screensaver).

Accounts that are not used for a period of 3 months will be made inactive and a further 3 months, deleted.

The Clearing Member shall have in place all necessary security measures and procedures to prevent any unauthorised access to, or use of, PMC and PMC Content and the Clearing Member shall immediately notify LCH.CLEARNET in the event of any such unauthorised access or use, or if any Access Details are lost, stolen, misused or become known by any person other than the relevant Authorised User.

Mis en forme : Titre 2

Mis en forme : Titre 2

Mis en forme : Paragraphes solidaires



In any case, the Clearing Member shall be responsible for the security and correct use of the credentials provided to them by LCH.CLEARNET. Any misuse of the credentials shall be the sole responsibility of the Clearing Members.

The Clearing Member shall immediately notify LCH.CLEARNET on becoming aware of any unauthorised access or use, or if any of its Access Details are lost, stolen, misused or become known by any other person.

8.1.38.3 Continuity

The Clearing Member shall procure that the Authorised Users shall comply with the terms of this Access Agreement and shall ensure that only Authorised Users to whom valid Access Details have been issued will access or use (or attempt to access or use) PMC and that Access Details are at all times kept confidential. If an Authorised User ceases to be authorised to act by the Clearing Member the Clearing Member will immediately notify LCH.CLEARNET by using the contact details provided for this purpose to the Clearing Member by LCH.CLEARNET from time to time. The Clearing Member shall ensure the Authorised User ceases to access and use PMC immediately it ceases to be authorised to act by the Clearing Member.

LCH.CLEARNET shall be entitled to suspend access to PMC by the Clearing Member, suspend and/or terminate access to PMC in respect of each Authorised User, and amend any or all Access Details, in each case from time to time and without prior notice to the Clearing Member or any Authorised User. Where LCH.CLEARNET notifies the Clearing Member that it is suspending or terminating an Authorised User's right to access PMC the Clearing Member shall ensure that each Authorised User ceases to access PMC until, in the case of suspension, LCH.CLEARNET advises it that such Authorised User is no longer so suspended.

8.1.48.4 Auditing

- All account activity with the [portal LCH.Clearnet Portal](#) and its applications is logged. Logs include: user name, source IP address, date, time, URL clicks and application action.
- All changes to an individual access levels is tracked for audit purposes.

Mis en forme : Titre 2

Mis en forme : Titre 2

9 SECURITY REGARDING CDSCLEAR REPORTING APPLICATION

9.1 Security and continuity

The following Security and Authentication Policy defines the CDSClear Reporting application security policies.

Mis en forme : Pas de paragraphes solidaires

While signing the [LCH.Clearnet](#) Portal / CDSClear Reporting application Request Form, the Clearing Members agree to comply with such Policy as detailed below and as amended from time to time.

9.1.1 Security and authentication policy

Mis en forme : Titre 2

Authentication policy

Mis en forme : Paragraphes solidaires

User IDs are assigned to individual users. They are created by nominated member Super Users or internal LCH business Super Users.

User authentication to the [portal LCH.Clearnet Portal](#) and its applications is two-factor.

- 1) A user ID and password will be required to login to the service
- 2) And a 2nd factor of authentication – based on source IP address (user's computer location) is invoked via a risk-based approach. i.e. users will be prompted for additional One-Time Access Code (sent to the registered corporate email address) when the source IP is non-white listed or is from a different location

Key Rules and Controls:

A named User ID and password are issued to each individual user. User IDs must not be shared and only used by the named individual. User IDs must be named and not generic and associated with a recognised corporate email account. 3rd party email addresses are not allowed.

Passwords must conform to the following rules:

- 1) Minimum 8 characters.
- 2) At least one upper case.
- 3) One number
- 4) Passwords cannot be re-used (remembers 17 recently used passwords)
- 5) Passwords must be changed on first login or after reset by LCH Security Admin teams

The access to the CDSClear Reporting application requires a unique username and a password.

To log into the CDSClear Reporting application, the user shall enter his user name and password. The server authenticates the user and the system grants access to the user in accordance with the specifications set out in the Request Form.

User names will be provided by LCH.CLEARNET on request of the Clearing Member. User names shall be meaningful enough to uniquely identify the user. Very short names and generic names related to functions shall be prohibited.

The initial password is provided by LCH.CLEARNET for a fixed term. When user logs in for the first time, the user will be requested to create a new password which can be changed at any time by the user.

9.1.2 Security and Back up Policy

Mis en forme : Titre 2

The CDSClear Reporting application user sessions shall expire after a 30 minutes period of inactivity. The workstation which gives access to the CDSClear Reporting application services shall also be configured with a separate, shorter local time-out option (e.g. Windows Screensaver).

Accounts that are not used for a period of 3 months will be made inactive and a further 3 months, deleted.

The Clearing Member shall have in place all necessary security measures and procedures to prevent any unauthorised access to, or use of, the CDSClear Reporting application and the CDSClear Reporting application Content and the Clearing Member shall immediately notify LCH.CLEARNET in the event of any such unauthorised access or use, or if any Access Details are lost, stolen, misused or become known by any person other than the relevant Authorised User.



In any case, the Clearing Member shall be responsible for the security and correct use of the credentials provided to them by LCH.CLEARNET. Any misuse of the credentials shall be the sole responsibility of the Clearing Members.

The Clearing Member shall immediately notify LCH.CLEARNET on becoming aware of any unauthorised access or use, or if any of its Access Details are lost, stolen, misused or become known by any other person.

9.1.39.3 *Continuity*

The Clearing Member shall procure that the Authorised Users shall comply with the terms of this Access Agreement and shall ensure that only Authorised Users to whom valid Access Details have been issued will access or use (or attempt to access or use) the CDSClear Reporting application and that Access Details are at all times kept confidential. If an Authorised User ceases to be authorised to act by the Clearing Member the Clearing Member will immediately notify LCH.CLEARNET by using the contact details provided for this purpose to the Clearing Member by LCH.CLEARNET from time to time. The Clearing Member shall ensure the Authorised User ceases to access and use the CDSClear Reporting application immediately it ceases to be authorised to act by the Clearing Member.

LCH.CLEARNET shall be entitled to suspend access to the CDSClear Reporting application by the Clearing Member, suspend and/or terminate access to the CDSClear Reporting application in respect of each Authorised User, and amend any or all Access Details, in each case from time to time and without prior notice to the Clearing Member or any Authorised User. Where LCH.CLEARNET notifies the Clearing Member that it is suspending or terminating an Authorised User's right to access the CDSClear Reporting application the Clearing Member shall ensure that each Authorised User ceases to access the CDSClear Reporting application until, in the case of suspension, LCH.CLEARNET advises it that such Authorised User is no longer so suspended.

9.1.49.4 *Auditing*

All account activity with the [portal](#) [LCH.Clearnet Portal](#) and its applications is logged. Logs include: user name, source IP address, date, time, URL clicks and application action.

All changes to an individual access levels is tracked for audit purposes.

Mis en forme : Titre 2

Mis en forme : Titre 2

10 SECURITY REGARDING CDSCLEAR TRADE MANAGEMENT APPLICATION

10.1 Security and continuity

The following Security and Authentication Policy defines the CDSClear Trade Management application security policies.

While signing the [LCH.Clearnet](#) Portal / the CDSClear Trade Management application Request Form, the Clearing Members agree to comply with such Policy as detailed below and as amended from time to time.

10.1.1 Security and authentication policy

Authentication policy

Users ID are assigned to individual users. They are created by nominated member Super Users or internal LCH business Super Users.

User authentication to the [portal_LCH.Clearnet Portal](#) and its applications is two-factor.

- 1) A user ID and password will be required to login to the service
- 2) And a 2nd factor of authentication – based on source IP address (user's computer location) is invoked via a risk-based approach. i.e. users will be prompted for additional One-Time Access Code (sent to the registered corporate email address) when the source IP is non-white listed or is from a different location

Key Rules and Controls:

A named User ID and password are issued to each individual user. User IDs must not be shared and only used by the named individual. User IDs must be named and not generic and associated with a recognised corporate email account. 3rd party email addresses are not allowed.

Passwords must conform to the following rules:

- 1) Minimum 8 characters.
- 2) At least one upper case.
- 3) One number
- 4) Passwords cannot be re-used (remembers 17 recently used passwords)
- 5) Passwords must be changed on first login or after reset by LCH Security Admin teams

The access to the CDSClear Trade Management application requires a unique username and a password.

To log into the CDSClear Trade Management application, the user shall enter his user name and password. The server authenticates the user and the system grants access to the user in accordance with the specifications set out in the Request Form.

User names will be provided by LCH.CLEARNET on request of the Clearing Member. User names shall be meaningful enough to uniquely identify the user. Very short names and generic names related to functions shall be prohibited.

The initial password is provided by LCH.CLEARNET for a fixed term. When user logs in for the first time, the user will be requested to create a new password which can be changed at any time by the user.

10.1.2 Security and Back up Policy

~~the~~The CDSClear Trade Management application user sessions shall expire after a 30 minutes period of inactivity. The workstation which gives access to the CDSClear Reporting application services shall also be configured with a separate, shorter local time-out option (e.g. Windows Screensaver).

Accounts that are not used for a period of 3 months will be made inactive and a further 3 months, deleted.

The Clearing Member shall have in place all necessary security measures and procedures to prevent any unauthorised access to, or use of, the CDSClear Trade Management application and the CDSClear Trade Management application Content and the Clearing Member shall immediately notify LCH.CLEARNET in the event of any such unauthorised access or use, or if any Access Details are lost, stolen, misused or become known by any person other than the relevant Authorised User.

Mis en forme : Titre 2

Mis en forme : Titre 2

Mis en forme : Paragraphes solidaires



In any case, the Clearing Member shall be responsible for the security and correct use of the credentials provided to them by LCH.CLEARNET. Any misuse of the credentials shall be the sole responsibility of the Clearing Members.

The Clearing Member shall immediately notify LCH.CLEARNET on becoming aware of any unauthorised access or use, or if any of its Access Details are lost, stolen, misused or become known by any other person.

| 40.1.3 **10.3** *Continuity*

The Clearing Member shall procure that the Authorised Users shall comply with the terms of this Access Agreement and shall ensure that only Authorised Users to whom valid Access Details have been issued will access or use (or attempt to access or use) the CDSClear Trade Management application and that Access Details are at all times kept confidential. If an Authorised User ceases to be authorised to act by the Clearing Member the Clearing Member will immediately notify LCH.CLEARNET by using the contact details provided for this purpose to the Clearing Member by LCH.CLEARNET from time to time. The Clearing Member shall ensure the Authorised User ceases to access and use the CDSClear Trade Management application immediately it ceases to be authorised to act by the Clearing Member.

LCH.CLEARNET shall be entitled to suspend access to the CDSClear Trade Management application by the Clearing Member, suspend and/or terminate access to the CDSClear Trade Management application in respect of each Authorised User, and amend any or all Access Details, in each case from time to time and without prior notice to the Clearing Member or any Authorised User. Where LCH.CLEARNET notifies the Clearing Member that it is suspending or terminating an Authorised User's right to access the CDSClear Trade Management application the Clearing Member shall ensure that each Authorised User ceases to access the CDSClear Trade Management application until, in the case of suspension, LCH.CLEARNET advises it that such Authorised User is no longer so suspended.

| 40.1.4 **10.4** *Auditing*

| All account activity with the [portal LCH.Clearnet Portal](#) and its applications is logged. Logs include: user name, source IP address, date, time, URL clicks and application action.

| All changes to an individual access levels is tracked for audit purposes.

Mis en forme : Titre 2

Mis en forme : Titre 2

11 SECURITY REGARDING CDSCLEAR BACKLOADING APPLICATION

11.1 Security and continuity

The following Security and Authentication Policy defines the [CDSClear](#) Backloading application security policies.

While signing the [LCH.Clearnet](#) Portal / the [CDSClear](#) Backloading application Request Form, the Clearing Members agree to comply with such Policy as detailed below and as amended from time to time.

11.1.1 Security and authentication policy

Authentication policy

Users ID are assigned to individual users. They are created by nominated member Super Users or internal LCH business Super Users.

User authentication to the [portal_LCH.Clearnet Portal](#) and its applications is two-factor.

- 1) A user ID and password will be required to login to the service
- 2) And a 2nd factor of authentication – based on source IP address (user's computer location) is invoked via a risk-based approach. i.e. users will be prompted for additional One-Time Access Code (sent to the registered corporate email address) when the source IP in non-white listed or is from a different location

Key Rules and Controls:

A named User ID and password are issued to each individual user. User IDs must not be shared and only used by the named individual. User IDs must be named and not generic and associated with a recognised corporate email account. 3rd party email addresses are not be allowed.

Passwords must conform to the following rules:

- 1) Minimum 8 characters.
- 2) At least one upper case.
- 3) One number
- 4) Passwords cannot be re-used (remembers 17 recently used passwords)
- 5) Passwords must be changed on first login or after reset by LCH Security Admin teams

The access to the [CDSClear](#) Backloading application requires a unique username and a password.

To log into the [CDSClear](#) Backloading application, the user shall enter his user name and password. The server authenticates the user and the system grants access to the user in accordance with the specifications set out in the Request Form.

User names will be provided by LCH.CLEARNET on request of the Clearing Member. User names shall be meaningful enough to uniquely identify the user. Very short names and generic names related to functions shall be prohibited.

The initial password is provided by LCH.CLEARNET for a fixed term. When user logs in for the first time, the user will be requested to create a new password which can be changed at any time by the user.

11.1.2 Security and Back up Policy

The [CDSClear](#) Backloading application user sessions shall expire after a 30 minutes period of inactivity. The workstation which gives access to the CDSClear [ReportingBackloading](#) application services shall also be configured with a separate, shorter local time-out option (e.g. Windows Screensaver).

Accounts that are not used for a period of 3 months will be made inactive and a further 3 months, deleted.

The Clearing Member shall have in place all necessary security measures and procedures to prevent any unauthorised access to, or use of, the [CDSClear](#) Backloading application and the [CDSClear](#) Backloading application Content and the Clearing Member shall immediately notify LCH.CLEARNET in the event of any such unauthorised access or use, or if any Access Details are lost, stolen, misused or become known by any person other than the relevant Authorised User.

Mis en forme : Titre 2

Mis en forme : Titre 2

Mis en forme : Paragraphes solidaires

Mis en forme : Justifié

Mis en forme : Police :12 pt, Anglais (États-Unis)



In any case, the Clearing Member shall be responsible for the security and correct use of the credentials provided to them by LCH.CLEARNET. Any misuse of the credentials shall be the sole responsibility of the Clearing Members.

The Clearing Member shall immediately notify LCH.CLEARNET on becoming aware of any unauthorised access or use, or if any of its Access Details are lost, stolen, misused or become known by any other person.

11.1.3.11.3 Continuity

The Clearing Member shall procure that the Authorised Users shall comply with the terms of this Access Agreement and shall ensure that only Authorised Users to whom valid Access Details have been issued will access or use (or attempt to access or use) the [CDSClear](#) Backloading application and that Access Details are at all times kept confidential. If an Authorised User ceases to be authorised to act by the Clearing Member the Clearing Member will immediately notify LCH.CLEARNET by using the contact details provided for this purpose to the Clearing Member by LCH.CLEARNET from time to time. The Clearing Member shall ensure the Authorised User ceases to access and use the [CDSClear](#) Backloading application immediately it ceases to be authorised to act by the Clearing Member.

LCH.CLEARNET shall be entitled to suspend access to the [CDSClear](#) Backloading application by the Clearing Member, suspend and/or terminate access to the [CDSClear](#) Backloading application in respect of each Authorised User, and amend any or all Access Details, in each case from time to time and without prior notice to the Clearing Member or any Authorised User. Where LCH.CLEARNET notifies the Clearing Member that it is suspending or terminating an Authorised User's right to access the [CDSClear](#) Backloading application the Clearing Member shall ensure that each Authorised User ceases to access the [CDSClear](#) Backloading application until, in the case of suspension, LCH.CLEARNET advises it that such Authorised User is no longer so suspended.

11.1.4.11.4 Auditing

All account activity with the [portal](#) [LCH.Clearnet Portal](#) and its applications is logged. Logs include: user name, source IP address, date, time, URL clicks and application action.
All changes to an individual access levels is tracked for audit purposes.

Mis en forme : Titre 2

Mis en forme : Titre 2

12 SECURITY REGARDING CDSCLEAR COMPRESSION APPLICATION

12.1 Security and continuity

The following Security and Authentication Policy defines the [CDSClear](#) Compression application security policies.

While signing the [LCH.Clearnet Portal](#) / the [CDSClear](#) Compression application Request Form, the Users agree to comply with such Policy as detailed below and as amended from time to time.

12.1.1 **Security and authentication policy**

Authentication policy

Users ID are assigned to individual users. They are created by nominated member Super Users or internal LCH business Super Users.

User authentication to the [portal_LCH.Clearnet Portal](#) and its applications is two-factor.

- 1) A user ID and password will be required to login to the service
- 2) And a 2nd factor of authentication – based on source IP address (user's computer location) is invoked via a risk-based approach. i.e. users will be prompted for additional One-Time Access Code (sent to the registered corporate email address) when the source IP in non-white listed or is from a different location

Key Rules and Controls:

A named User ID and password are issued to each individual user. User IDs must not be shared and only used by the named individual. User IDs must be named and not generic and associated with a recognised corporate email account. 3rd party email addresses are not be allowed.

Passwords must conform to the following rules:

- 1) Minimum 8 characters.
- 2) At least one upper case.
- 3) One number
- 4) Passwords cannot be re-used (remembers 17 recently used passwords)
- 5) Passwords must be changed on first login or after reset by LCH Security Admin teams

The access to the [CDSClear](#) Compression application requires a unique username and a password.

To log into the [CDSClear](#) Compression application, the user shall enter his user name and password. The server authenticates the user and the system grants access to the user in accordance with the specifications set out in the Request Form.

User names will be provided by LCH.CLEARNET on request of the User. User names shall be meaningful enough to uniquely identify the user. Very short names and generic names related to functions shall be prohibited.

The initial password is provided by LCH.CLEARNET for a fixed term. When user logs in for the first time, the user will be requested to create a new password which can be changed at any time by the user.

12.1.2 **Security and Back up Policy**

The [CDSClear](#) Compression application user sessions shall expire after a 30 minutes period of inactivity. The workstation which gives access to the CDSClear [ReportingCompression](#) application services shall also be configured with a separate, shorter local time-out option (e.g. Windows Screensaver).

Accounts that are not used for a period of 3 months will be made inactive and a further 3 months, deleted.

The Clearing Member shall have in place all necessary security measures and procedures to prevent any unauthorised access to, or use of, the [BackloadingCDSClear Compression](#) application and the [BackloadingCDSClear Compression](#) application Content and the Clearing Member shall immediately notify LCH.CLEARNET in the event of any such unauthorised access or use, or if any Access Details are lost, stolen, misused or become known by any person other than the relevant Authorised User.

Mis en forme : Titre 2

Mis en forme : Titre 2

Mis en forme : Paragraphes solidaires

Mis en forme : Justifié

Mis en forme : Police :10 pt

In any case, the Clearing Member shall be responsible for the security and correct use of the credentials provided to them by LCH.CLEARNET. Any misuse of the credentials shall be the sole responsibility of the Users.

The Clearing Member shall immediately notify LCH.CLEARNET on becoming aware of any unauthorised access or use, or if any of its Access Details are lost, stolen, misused or become known by any other person.

12.1.3 12.3 Continuity

The Clearing Member shall procure that the Authorised Users shall comply with the terms of this Access Agreement and shall ensure that only Authorised Users to whom valid Access Details have been issued will access or use (or attempt to access or use) the [BackloadingCDSClear Compression](#) application and that Access Details are at all times kept confidential. If an Authorised User ceases to be authorised to act by the Clearing Member the Clearing Member will immediately notify LCH.CLEARNET by using the contact details provided for this purpose to the Clearing Member by LCH.CLEARNET from time to time. The Clearing Member shall ensure the Authorised User ceases to access and use the [BackloadingCDSClear Compression](#) application immediately it ceases to be authorised to act by the Clearing Member.

LCH.CLEARNET shall be entitled to suspend access to the [CDSClear Compression](#) application by the Clearing Member, suspend and/or terminate access to the [CDSClear Compression](#) application in respect of each Authorised User, and amend any or all Access Details, in each case from time to time and without prior notice to the Clearing Member or any Authorised User. Where LCH.CLEARNET notifies the Clearing Member that it is suspending or terminating an Authorised User's right to access the [BackloadingCDSClear Compression](#) application the Clearing Member shall ensure that each Authorised User ceases to access the [BackloadingCDSClear Compression](#) application until, in the case of suspension, LCH.CLEARNET advises it that such Authorised User is no longer so suspended.

12.1.4 12.4 Auditing

All account activity with the [portalLCH.Clearnet Portal](#) and its applications is logged. Logs include: user name, source IP address, date, time, URL clicks and application action.
All changes to an individual access levels is tracked for audit purposes.

Mis en forme : Titre 2

Mis en forme : Titre 2

Mis en forme : Justifié



13 CONTINUITY AND SECURITY REGARDING THE CDSCLEAR REPORTING SFTP

CLEARING ACCESS SOLUTION

The following Security and Authentication Policy defines the CDSClear SFTP solution security policies.

While signing the LCH.Clearnet Portal / CDSClear Reporting SFTP solution Request Form, the Clearing Members agree to comply with such Policy as detailed below and as amended from time to time.

13.1 Security and authentication policy

Authentication policy

Clearing Members ID are assigned to individual users. They are created by nominated member Super Users or internal LCH business Super Users.

User authentication is based on:

- a unique user ID and a password; and
- source IP address (user's computer location) which is invoked via a risk-based approach, i.e. users will be prompted for additional One-Time Access Code (sent to the registered corporate email address) when the source IP is in non-white listed or is from a different location

Key Rules and Controls:

A named User ID and password are issued to each individual user. User IDs must not be shared and must only be used by the named individual. User IDs must be named and not generic and associated with a recognised corporate email account. 3rd party email addresses are not be allowed.

Passwords must conform to the following rules:

- 1) Minimum 8 characters.
- 2) At least one upper case.
- 3) One number
- 4) Passwords cannot be re-used (remembers 17 recently used passwords)
- 5) Passwords must be changed on first login or after reset by LCH Security Admin teams

The access to the CDSClear Reporting SFTP solution requires a unique username and a password.

To log into the CDSClear Reporting SFTP solution, the user shall enter his user name and password. The server authenticates the user and the system grants access to the user in accordance with the specifications set out in the Request Form.

User names will be provided by LCH.CLEARNET on request of the Clearing Member. User names shall be meaningful enough to uniquely identify the user. Very short names and generic names related to functions shall be prohibited.

The initial password is provided by LCH.CLEARNET for a fixed term. When user logs in for the first time, the user will be requested to create a new password which can be changed at any time by the user.

13.2 Security and Back up Policy

CDSClear Reporting SFTP solution user sessions shall expire after a 30 minutes period of inactivity. The workstation which gives access to the CDSClear SFTP solution services shall also be configured with a separate, shorter local time-out option (e.g. Windows Screensaver).

Accounts that are not used for a period of 3 months will be made inactive and a further 3 months, deleted.

The Clearing Member shall have in place all necessary security measures and procedures to prevent any unauthorised access to, or use of, CDSClear Reporting SFTP solution and CDSClear Reporting SFTP solution Content and the Clearing Member shall immediately notify LCH.CLEARNET in the event of any such unauthorised access or use, or if any Access Details are lost, stolen, misused or become known by any person other than the relevant Authorised User.



In any case, the Clearing Member shall be responsible for the security and correct use of the credentials provided to them by LCH.CLEARNET. Any misuse of the credentials shall be the sole responsibility of the Clearing Members.

The Clearing Member shall immediately notify LCH.CLEARNET on becoming aware of any unauthorised access or use, or if any of its Access Details are lost, stolen, misused or become known by any other person.

13.3 Continuity

The Clearing Member shall procure that the Authorised Users shall comply with the terms of this Access Agreement and shall ensure that only Authorised Users to whom valid Access Details have been issued will access or use (or attempt to access or use) CDSClear Reporting SFTP solution and that Access Details are at all times kept confidential. If an Authorised User ceases to be authorised to act by the Clearing Member the Clearing Member will immediately notify LCH.CLEARNET by using the contact details provided for this purpose to the Clearing Member by LCH.CLEARNET from time to time. The Clearing Member shall ensure the Authorised User ceases to access and use CDSClear Reporting SFTP solution immediately it ceases to be authorised to act by the Clearing Member.

LCH.CLEARNET shall be entitled to suspend access to CDSClear Reporting SFTP solution by the Clearing Member, suspend and/or terminate access to CDSClear Reporting SFTP solution in respect of each Authorised User, and amend any or all Access Details, in each case from time to time and without prior notice to the Clearing Member or any Authorised User. Where LCH.CLEARNET notifies the Clearing Member that it is suspending or terminating an Authorised User's right to access CDSClear Reporting SFTP solution the Clearing Member shall ensure that each Authorised User ceases to access CDSClear Reporting SFTP solution until, in the case of suspension, LCH.CLEARNET advises it that such Authorised User is no longer so suspended.

14 CONTINUITY AND SECURITY REGARDING THE CDSCLEAR REPORTING APPLICATION

PROGRAMMING INTERFACE

The following Security and Authentication Policy defines the CDSClear Reporting Application Programming Interface (API) solution security policies.

While signing the LCH.Clearnet Portal / CDSClear Reporting API solution Request Form, the Clearing Members agree to comply with such Policy as detailed below and as amended from time to time.

14.1 Security and authentication policy

Authentication policy

Clearing Members ID are assigned to individual users. They are created by nominated member Super Users or internal LCH business Super Users.

User authentication is based on:

- a unique user ID and a password; and
- source IP address (user's computer location) which is invoked via a risk-based approach, i.e. users will be prompted for additional One-Time Access Code (sent to the registered corporate email address) when the source IP in non-white listed or is from a different location

Key Rules and Controls:

A named User ID and password are issued to each individual user. User IDs must not be shared and must only be used by the named individual. User IDs must be named and not generic and associated with a recognised corporate email account. 3rd party email addresses are not be allowed.

Passwords must conform to the following rules:

- 1) Minimum 8 characters.
- 2) At least one upper case.
- 3) One number
- 4) Passwords cannot be re-used (remembers 17 recently used passwords)
- 5) Passwords must be changed on first login or after reset by LCH Security Admin teams



The access to the CDSClear Reporting API solution requires a unique username and a password.

To log into the CDSClear Reporting API solution, the user shall enter his user name and password. The server authenticates the user and the system grants access to the user in accordance with the specifications set out in the Request Form.

User names will be provided by LCH.CLEARNET on request of the Clearing Member. User names shall be meaningful enough to uniquely identify the user. Very short names and generic names related to functions shall be prohibited.

The initial password is provided by LCH.CLEARNET for a fixed term. When user logs in for the first time, the user will be requested to create a new password which can be changed at any time by the user.

14.2 Security and Back up Policy

CDSClear Reporting API solution user sessions shall expire after a 30 minutes period of inactivity. The workstation which gives access to the CDSClear Reporting API solution services shall also be configured with a separate, shorter local time-out option (e.g. Windows Screensaver).

Accounts that are not used for a period of 3 months will be made inactive and a further 3 months, deleted.

The Clearing Member shall have in place all necessary security measures and procedures to prevent any unauthorised access to, or use of, CDSClear Reporting API solution and CDSClear Reporting API solution Content and the Clearing Member shall immediately notify LCH.CLEARNET in the event of any such unauthorised access or use, or if any Access Details are lost, stolen, misused or become known by any person other than the relevant Authorised User.

In any case, the Clearing Member shall be responsible for the security and correct use of the credentials provided to them by LCH.CLEARNET. Any misuse of the credentials shall be the sole responsibility of the Clearing Members.

The Clearing Member shall immediately notify LCH.CLEARNET on becoming aware of any unauthorised access or use, or if any of its Access Details are lost, stolen, misused or become known by any other person.

14.3 Continuity

The Clearing Member shall procure that the Authorised Users shall comply with the terms of this Access Agreement and shall ensure that only Authorised Users to whom valid Access Details have been issued will access or use (or attempt to access or use) CDSClear Reporting API solution and that Access Details are at all times kept confidential. If an Authorised User ceases to be authorised to act by the Clearing Member the Clearing Member will immediately notify LCH.CLEARNET by using the contact details provided for this purpose to the Clearing Member by LCH.CLEARNET from time to time. The Clearing Member shall ensure the Authorised User ceases to access and use CDSClear Reporting API solution immediately it ceases to be authorised to act by the Clearing Member.

LCH.CLEARNET shall be entitled to suspend access to CDSClear Reporting API solution by the Clearing Member, suspend and/or terminate access to CDSClear SFTP solution in respect of each Authorised User, and amend any or all Access Details, in each case from time to time and without prior notice to the Clearing Member or any Authorised User. Where LCH.CLEARNET notifies the Clearing Member that it is suspending or terminating an Authorised User's right to access CDSClear Reporting API solution the Clearing Member shall ensure that each Authorised User ceases to access CDSClear Reporting API solution until, in the case of suspension, LCH.CLEARNET advises it that such Authorised User is no longer so suspended.

15 SECURITY REGARDING CDSCLEAR PORTFOLIO MARGIN CALCULATION APPLICATION

PROGRAMMING INTERFACE



The following Security and Authentication Policy defines the CDSClear Portfolio Margin Calculation Application Programming Interface API (PMC API) security policies.

While signing the LCH.Clearnet Portal / PMC Request Form, the Clearing Members agree to comply with such Policy as detailed below and as amended from time to time.

15.1 Security and authentication policy

Authentication policy

Clearing Members IDs are assigned to individual users. They are created by nominated member Super Users or internal LCH business Super Users.

User authentication to the LCH.Clearnet Portal and its applications is two-factor.

- 1) A user ID and password will be required to login to the service
- 2) And a 2nd factor of authentication – based on source IP address (user's computer location) is invoked via a risk-based approach, i.e. users will be prompted for additional One-Time Access Code (sent to the registered corporate email address) when the source IP is non-white listed or is from a different location

Key Rules and Controls:

A named User ID and password are issued to each individual user. User IDs must not be shared and must only be used by the named individual. User IDs must be named and not generic and associated with a recognised corporate email account. 3rd party email addresses are not be allowed.

Passwords must conform to the following rules:

- 1) Minimum 8 characters.
- 2) At least one upper case.
- 3) One number
- 4) Passwords cannot be re-used (remembers 17 recently used passwords)
- 5) Passwords must be changed on first login or after reset by LCH Security Admin teams

The access to the CDSClear PMC API requires a unique username and a password.

To log into CDSClear PMC API, the user shall enter his user name and password. The server authenticates the user and the system grants access to the user in accordance with the specifications set out in the Request Form.

User names will be provided by LCH.CLEARNET on request of the Clearing Member. User names shall be meaningful enough to uniquely identify the user. Very short names and generic names related to functions shall be prohibited.

The initial password is provided by LCH.CLEARNET for a fixed term. When user logs in for the first time, the user will be requested to create a new password which can be changed at any time by the user.

15.2 Security and Back up Policy

CDSClear PMC API user sessions shall expire after a 30 minutes period of inactivity. The workstation which gives access to the CDSClear PMC API services shall also be configured with a separate, shorter local time-out option (e.g. Windows Screensaver).

Accounts that are not used for a period of 3 months will be made inactive and a further 3 months, deleted.

The Clearing Member shall have in place all necessary security measures and procedures to prevent any unauthorised access to, or use of, CDSClear PMC API and CDSClear PMC API Content and the Clearing Member shall immediately notify LCH.CLEARNET in the event of any such unauthorised access or use, or if any Access Details are lost, stolen, misused or become known by any person other than the relevant Authorised User.

In any case, the Clearing Member shall be responsible for the security and correct use of the credentials provided to them by LCH.CLEARNET. Any misuse of the credentials shall be the sole responsibility of the Clearing Members.

The Clearing Member shall immediately notify LCH.CLEARNET on becoming aware of any unauthorised access or use, or if any of its Access Details are lost, stolen, misused or become known by any other person.

15.3 Continuity

The Clearing Member shall procure that the Authorised Users shall comply with the terms of this Access Agreement and shall ensure that only Authorised Users to whom valid Access Details have been issued will access or use (or attempt to access or use) the CDSClear PMC API and that Access Details are at all times kept confidential. If an Authorised User ceases to be authorised to act by the Clearing Member the Clearing Member will immediately notify LCH.CLEARNET by using the contact details provided for this purpose to the Clearing Member by LCH.CLEARNET from time to time. The Clearing Member shall ensure the Authorised User ceases to access and use the CDSClear PMC API immediately it ceases to be authorised to act by the Clearing Member.

LCH.CLEARNET shall be entitled to suspend access to CDSClear PMC API by the Clearing Member, suspend and/or terminate access to CDSClear PMC API in respect of each Authorised User, and amend any or all Access Details, in each case from time to time and without prior notice to the Clearing Member or any Authorised User. Where LCH.CLEARNET notifies the Clearing Member that it is suspending or terminating an Authorised User's right to access the CDSClear PMC API the Clearing Member shall ensure that each Authorised User ceases to access the CDSClear PMC API until, in the case of suspension, LCH.CLEARNET advises it that such Authorised User is no longer so suspended.

15.4 Auditing

All account activity with the LCH.Clearnet Portal and its applications is logged. Logs include: user name, source IP address, date, time, URL clicks and application action.
All changes to an individual access levels is tracked for audit purposes.

Mis en forme : Justifié

Schedule 2 CLEARING ACCESS SOLUTIONS DESCRIPTION

The Services consist in the provision of a Clearing Access Solution, which consists of:

- 6) LCAP;
 - eCCW;
 - Web Fixed Income,
 - Network Services,
 - Collateral Management Services (“CMS”);
 - CDSClear Portfolio Margin Calculation [Web](#) tool (“PMC”);
 - [CDSClear Portfolio Margin Calculation Application Programming Interface](#);
 - CDSClear Reporting application;
 - [CDSClear Reporting Application Programming Interface](#)
 - CDSClear Trade Management application;
 - CDSClear Backloading application; ~~and~~
 - CDSClear Compression application;
 - Web EGCP; ~~and~~
 - [CDSClear Reporting SFTP solution](#)

as defined below, and/or a combination of them.

LCAP (Logical Certified Access Point): is the Logical Clearing Access Solution (hosted in LCH.CLEARNET data centres) allowing the Users to gain access to the Clearing Solution as described in Schedule 2 appendix 3.

eCCW: is the Clearing Access Solution allowing the Users to gain access to the Clearing Solution on Internet or over the Network Services from its premises, as described in Schedule 2.

Web OTC or hereafter “Web Fixed Income”: is the electronic Clearing Access Solution provided by LCH.CLEARNET for its Users acting on the bonds and repos markets (public government debt) cleared by LCH.CLEARNET.

Web EGCP: is the electronic Clearing Access Solution provided by LCH.CLEARNET for its Users acting on the €GCPlus market cleared by LCH.CLEARNET.

CMS is a tool provided by LCH.CLEARNET for its Users allowing them the management of the Collateral. “Collateral” shall understood as the collateral identified on the Portal (as described in Annex 2 of the Appendix 5 of [this Schedule 2](#) and [LCH.CLEARNET’s](#) website), from time to time as being eligible for lodgement and/or release utilising the Portal and in respect of which the member has completed and has in place a current and valid Request Form which has been received by LCH.CLEARNET.

CDSClear Reporting application is a User Interface which allows Users of LCH.Clearnet CDSClear service to gain access to a full suite of downloadable report files [and sits with the LCH.Clearnet Portal](#).

CDSClear Trade Management application is a User Interface which allows Users of LCH.Clearnet CDSClear service to gain access for real time information on their trade portfolios (bilateral and cleared trades-) [and sits with the LCH.Clearnet Portal](#).

CDSClear Backloading application is a User Interface which allows Users of LCH.Clearnet CDSClear service to have the ability to select and upload trades for clearing for the Weekly Backloading cycle [and sits with the LCH.Clearnet Portal](#).

CDSClear Compression application is a User Interface which allows Users of LCH.Clearnet CDSClear service to configure their compression settings on their portfolios- [and sits with the LCH.Clearnet Portal](#). Users have several options of compression frequency (daily or weekly) and the possibility to compress their trades at deskID level.

CDSClear Portfolio Margin Calculation (PMC) is a tool [which allows Users of LCH.Clearnet CDSClear service to compute the margin requirements for their portfolios and](#) sits with the LCH.Clearnet Portal-~~more~~

Mis en forme : Retrait : Gauche : 1 cm, Suspendu : 1 cm, Avec puces + Niveau : 1 + Alignement : 0,63 cm + Tabulation après : 1,27 cm + Retrait : 1,27 cm, Pas de paragraphes solidaires, Taquets de tabulation : 1,9 cm, Tabulation de liste + Pas à 0 cm + 0,89 cm + 1,27 cm

information.

CDSClear Portfolio Margin Calculation Application Programming Interface (PMC API) is a programmatic interface where Users of LCH.Clearnet CDSClear service can use scripts to access and download individual margin results.

LCH.Clearnet Portal is a single sign-on solution for various LCH.CLEARNET applications (as described in Appendix 11 of this Schedule 2). Access to the LCH.Clearnet Portal is provided by LCH.CLEARNET to Users of LCH.Clearnet CDSClear Userservice over secured Internet.

LCH.CLEARNET Portal is a single sign-on solution for various LCH.CLEARNET applications. **CDSClear Reporting SFTP Solution** is the Secure File Transfer Protocol interface allowing Users of LCH.Clearnet CDSClear service to gain access to the member reporting service as described in Appendix 13 of this Schedule 2.

CDSClear Reporting Application Programming Interface (API) is a programmatic interface where Users of LCH.Clearnet CDSClear service can use scripts to access and download individual reports.

Mis en forme : retrait : Gauche : 1 cm, Première ligne : 0 cm

This Schedule 2 is made of the following annexes:

- Appendix 1: Description of LCH.CLEARNET eCCW Clearing Access Solution
- Appendix 2: Description of LCH.CLEARNET Web Fixed Income Clearing Access Solution
- Appendix 3: Description of the LCAP solution
- Appendix 4: Description of Network Services
- Appendix 5: Description of CMS
- Appendix 6: Description of [CDSClear](#) PMC tool
- Appendix 7: Description of the CDSClear Reporting application
- Appendix 8: Description of the CDSClear Trade Management application
- Appendix 9: Description of the CDSClear Backloading application
- Appendix 10: Description of the CDSClear Compression application
- Appendix 11: Description of the LCH.Clearnet Portal
- Appendix 12: Description of Web EGCP
- [Appendix 13: Description of the CDSClear Reporting SFTP Solution](#)
- [Appendix 14: Description of the CDSClear Reporting API](#)
- [Appendix 15: Description of the CDSClear Portfolio Margin Calculation API](#)

APPENDIX 1: DESCRIPTION OF LCH.CLEARNET eCCW

42.2.15.5 GENERAL PRINCIPLES

42.2.415.5.1 eCCW is a Graphical User Interface provided over Internet or over LCH.CLEARNET network, by LCH.CLEARNET for its Users, other than Users of LCH.Clearnet CDSClear service, that enables them to interact with LCH.CLEARNET Clearing Solution.

Mis en forme : Taquets de tabulation : 2,29 cm, Tabulation de liste + Pas à 1,02 cm

Mis en forme : Taquets de tabulation : 2,41 cm, Tabulation de liste + Pas à 1,27 cm

42.3.15.6 MANAGING PRINCIPLES

42.3.415.6.1 The access to the eCCW is delivered by LCH.CLEARNET, after the Users have duly filled in and signed the LCH.CLEARNET adequate Request Form.

Mis en forme : Taquets de tabulation : 1,65 cm, Tabulation de liste + Pas à 1,02 cm

Mis en forme : Taquets de tabulation : 2,41 cm, Tabulation de liste + Pas à 1,27 cm

42.3.215.6.2 This Request Form shall be duly completed and signed by the Users and sent by registered letter to the appropriate LCH.CLEARNET interlocutor as set out on the Request Form.

Mis en forme : Taquets de tabulation : 2,41 cm, Tabulation de liste + Pas à 1,27 cm

42.3.315.6.3 The Internet access to the eCCW is managed via a Secure Access Card. The Users shall strictly comply with the terms of use of the Secure Access Card as those terms are set out in Annex 1 "Secure Access Card management", security measures set out in Schedule 1 of this Agreement and the associated Documentation.

Mis en forme : Taquets de tabulation : 2,41 cm, Tabulation de liste + Pas à 1,27 cm

Mis en forme : Titre 3

42.3.415.6.4 Via the eCCW, LCH.CLEARNET provides the Users with the appropriate clearing data (files and real time data) as set out in Annex 2 "Clearing Data to be accessed via eCCW" of this appendix.

Mis en forme : Taquets de tabulation : 2,41 cm, Tabulation de liste + Pas à 1,27 cm

42.3.515.6.5 Any Anomaly encountered regarding the proper use of the eCCW must be raised to LCH.CLEARNET Customer Technical Helpdesk (CTH) in compliance with the terms set out in Schedule 3 of this Agreement.

Mis en forme : Taquets de tabulation : 2,41 cm, Tabulation de liste + Pas à 1,27 cm

42.3.615.6.6 Any Changes required by the Users to LCH.CLEARNET regarding the eCCW shall be notified by the Users to LCH.CLEARNET by filling in the appropriate Request Form available from LCH.CLEARNET.

Mis en forme : Taquets de tabulation : 2,41 cm, Tabulation de liste + Pas à 1,27 cm

42.3.715.6.7 The costs regarding the provision of this Service are stipulated within the Request Form and are in accordance with the costs mentioned within LCH.CLEARNET effective fee grid.

Mis en forme : Taquets de tabulation : 2,41 cm, Tabulation de liste + Pas à 1,27 cm

42.4.15.7 ANNEX 1 : Secure Access Card Management

42.4.415.7.1 General Principles

Mis en forme : Taquets de tabulation : 1,65 cm, Tabulation de liste + Pas à 1,02 cm

42.4.1.415.7.1.1 A token, hereafter referred as either "Secure Access Card" aims at delivering to the Users a secured electronic access to the following eCCW Clearing Access Solution.

Mis en forme : Taquets de tabulation : 2,41 cm, Tabulation de liste + Pas à 1,27 cm

Mis en forme : Taquets de tabulation : 3,91 cm, Tabulation de liste + Pas à 1,52 cm

42.4.1.215.7.1.2 The Secure Access Card is automatically provided by LCH.CLEARNET as soon as the Users request to be granted access to eCCW.

Mis en forme : Taquets de tabulation : 3,91 cm, Tabulation de liste + Pas à 1,52 cm

42.4.1.3 ~~For the sake of clarity, two distinct technical infrastructures (one dedicated to the clearing of cash and derivatives financial instruments, and another one dedicated to the clearing of credit default swaps "CDS") are implemented; each secure access card gives a dedicated access to each technical infrastructure; any Clearing Member acting on the CDS clearing segment shall subscribe a dedicated Secure Access Card to be granted with an access to the relevant CDS files via a dedicated eCCW Clearing Access Solution as listed below.~~

12.4.215.7.2 Managing principles

The managing principles for a "Secure Access Card" are detailed hereafter:

12.4.315.7.3 In order to be granted access to eCCW, the Users shall request their LCH.CLEARNET to provide the appropriate Request Form. Once this form is duly completed and signed by the Users, LCH.CLEARNET takes the necessary actions to give the Users eCCW access in coordination with CTH.

12.4.415.7.4 The CTH is in charge of allocating a package of Secure Access Cards in accordance with the request issued by the Users through the Request Form. A package of Secure Access Cards is composed of:

- 6) a production Secure Access Card
- 7) an acceptance Secure Access Card
- 8) a back-up Secure Access Card (on request only)

12.4.515.7.5 The EMSA shall distribute eCCW Secure Access Cards to the relevant eCCW Users.

12.4.615.7.6 The Users shall comply with the instructions provided by LCH.CLEARNET in the relevant documentation in order to activate the Secure Access Card.

12.4.715.7.7 The following events shall be immediately communicated to LCH.CLEARNET by the EMSA in order to update Users' accesses:

- 3) leavers (eg. resignation, dismissal, any cause of leaving)
- 4) change of function
- 5) re-assignment of eCCW Secure Access Cards
- 6) loss of token or activation of eCCW Secure Access Cards following de-synchronisation or loss of PIN code.

12.4.815.7.8 In case a Secure Access Card is lost or broken, it should be notified immediately by the EMSA to LCH.CLEARNET in order to for the Customer Technical Helpdesk to allocate a new card to the User once the relevant change request form would have been sent back.

12.4.915.7.9 The Secure Access Card is to be strictly used for eCCW connection only.

12.4.1015.7.10 The Secure Access Card is to be charged to the Users by LCH.CLEARNET according to the fee grid.

Mis en forme : Taquets de tabulation : 2,41 cm, Tabulation de liste + Pas à 1,27 cm

Mis en forme : Retrait : Gauche : 0 cm, Première ligne : 0 cm

Mis en forme : Taquets de tabulation : 2,41 cm, Tabulation de liste + Pas à 1,27 cm

Mis en forme : Taquets de tabulation : 2,41 cm, Tabulation de liste + Pas à 1,27 cm

Mis en forme : Retrait : Gauche : 0,75 cm, Suspendu : 0,75 cm, Hiérarchisation + Niveau : 1 + Style de numérotation : Puce + Alignement : 1,9 cm + Tabulation après : 2,54 cm + Retrait : 2,54 cm, Taquets de tabulation : 3,17 cm, Tabulation de liste + Pas à 2,54 cm

Mis en forme : Taquets de tabulation : 2,41 cm, Tabulation de liste + Pas à 1,27 cm

Mis en forme : Taquets de tabulation : 2,41 cm, Tabulation de liste + Pas à 1,27 cm

Mis en forme : Taquets de tabulation : 2,41 cm, Tabulation de liste + Pas à 1,27 cm

Mis en forme : Retrait : Gauche : 0,75 cm, Suspendu : 0,75 cm, Hiérarchisation + Niveau : 1 + Style de numérotation : Puce + Alignement : 1,9 cm + Tabulation après : 2,54 cm + Retrait : 2,54 cm, Taquets de tabulation : 3,17 cm, Tabulation de liste + Pas à 2,54 cm

Mis en forme : Taquets de tabulation : 2,41 cm, Tabulation de liste + Pas à 1,27 cm

Mis en forme : Taquets de tabulation : 2,41 cm, Tabulation de liste + Pas à 1,27 cm

Mis en forme : Taquets de tabulation : 2,41 cm, Tabulation de liste + Pas à 1,27 cm

Mis en forme : Taquets de tabulation : 1,65 cm, Tabulation de liste + Pas à 1,02 cm

12.515.8 ANNEX 2: Clearing data to be accessed via eCCW

1	CASH CLEARING FILES	PRODUCTION FILES	TEST FILES	
	Trade leg reconciliation (for CMF) - this file is charged	POS.SP***TC	<input type="checkbox"/> POS.SH***TC	<input type="checkbox"/>
	Trade leg reconciliation (for TMF) - this file is charged - on LCAP only	POS.SP***TT	<input type="checkbox"/> POS.SH***TT	<input type="checkbox"/>
	Position Result Third Resume (PR3)	POS.SP***S3	<input type="checkbox"/> POS.SH***S3	<input type="checkbox"/>
	Settlement Information File (SIF) cc= BE/ FR/ NL/PT/LU	EP*****ccSIFday	<input type="checkbox"/> EH*****ccSIFday	<input type="checkbox"/>
	Buy-In Information File (BIF) cc= BE/ FR/ NL/PT/LU	EP*****ccBIFday	<input type="checkbox"/> EH*****ccBIFday	<input type="checkbox"/>
	Margin account result	PB.SP***B1	<input type="checkbox"/> PB.SH***B1	<input type="checkbox"/>
	Public SPAN	SPAN.SPXXXBA SPAN.SPXXXBE	<input type="checkbox"/> SPAN.SHXXXBA SPAN.SHXXXBE	<input type="checkbox"/>
	Corporate Events File	SPAN.SPXXXOA SPAN.SPXXXOB	<input type="checkbox"/> SPAN.SHXXXOA SPAN.SHXXXOB	<input type="checkbox"/>
	Cash Static Data (morning)	EPPUBLICXXLCCD02day	<input type="checkbox"/> EHPUBLICXXLCCD02day	<input type="checkbox"/>
	Cash Static Data (evening)	EPPUBLICXXLCCD01day	<input type="checkbox"/> EHPUBLICXXLCCD01day	<input type="checkbox"/>
	Cash Static Data (morning) only for Luxembourg	EPPUBLICXXLUCD02day	<input type="checkbox"/> EHPUBLICXXLUCD02day	<input type="checkbox"/>
	Cash Static Data (evening) only for Luxembourg	EPPUBLICXXLUCD01day	<input type="checkbox"/> EHPUBLICXXLUCD01day	<input type="checkbox"/>

Position Report (for TMF) Cash Margin Report (for TMF) Add-ons Margin Report (for TMF)	EP000*****TCPRnnqqq EP000*****TCMRnnqqq EP000*****TCAM00qqq	<input type="checkbox"/>	EH000*****TCPRnnqqq EH000*****TCMRnnqqq EH000*****TCAM00qqq	<input type="checkbox"/>
2 DERIVATIVES CLEARING FILES				
Private Matif positions & performance bond	POS.FP***S1 POS.FP***S2 POS.FP***S3 PB.FP***B1	<input type="checkbox"/>	POS.FH***S1 POS.FH***S2 POS.FH***S3 PB.FP***B1	<input type="checkbox"/>
Public Matif SPAN	SPAN.FPXXXBA SPAN.FPXXXBB SPAN.FPXXXBC	<input type="checkbox"/>	SPAN.FHXXXBA SPAN.FHXXXBB SPAN.FHXXXBC	<input type="checkbox"/>
Private Monep positions & performance bond	POS.OP***S1 POS.OP***S2 POS.OP***S3 PB.OP***B3	<input type="checkbox"/>	POS.OH***S1 POS.OH***S2 POS.OH***S3 PB.OP***B3	<input type="checkbox"/>
Daily operations Monep (all products) - this file is charged	POS.OP***J0 POS.OP***J1 POS.OP***J2	<input type="checkbox"/>	POS.OH***J0 POS.OH***J1 POS.OH***J2	<input type="checkbox"/>
Daily operations Monep (Dutch products and trading fees all derivatives clearing segments) - this file is charged	POS.OP***J3	<input type="checkbox"/>	POS.OH***J3	<input type="checkbox"/>
Public Monep SPAN	SPAN.OPXXXBD	<input type="checkbox"/>	SPAN.OHXXXBD	<input type="checkbox"/>
Derivatives instrument characteristics for the current business date (morning)	EPPUBLICXXLCDD0day	<input type="checkbox"/>	EHPUBLICXXLCDD01day	<input type="checkbox"/>
Derivatives instrument characteristics for the current business date (intra-day)	EPPUBLICXXLCDI01day	<input type="checkbox"/>	EHPUBLICXXLCDI01day	<input type="checkbox"/>
Derivatives clearing elements	EPPUBLICXXLCDC01day	<input type="checkbox"/>	EHPUBLICXXLCDC01day	<input type="checkbox"/>
Derivatives open positions	EPPUBLICXXLCDP01day EPPUBLICXXLCDP02day EPPUBLICXXLCDP03day EPPUBLICXXLCDP04day	<input type="checkbox"/>	EHPUBLICXXLCDP01day EHPUBLICXXLCDP02day EHPUBLICXXLCDP03day EHPUBLICXXLCDP04day	<input type="checkbox"/>
Derivatives exercise	EPPUBLICXXLCDE01day EPPUBLICXXLCDE02day	<input type="checkbox"/>	EHPUBLICXXLCDE01day EHPUBLICXXLCDE02day	<input type="checkbox"/>
Underlying cash closing price	EPPUBLICXXLCCC01day	<input type="checkbox"/>	EHPUBLICXXLCCC01day	<input type="checkbox"/>

Mis en forme : Retrait : Gauche : 0 cm

13.16 APPENDIX 2: DESCRIPTION OF WEB FIXED INCOME

13.16.1 GENERAL PRINCIPLES

13.16.1.1 Web FIXED INCOME is an electronic Clearing Access Solution provided by LCH.CLEARNET for its Users trading on the bonds and repos markets (public government debt) cleared by LCH.CLEARNET.

13.16.1.2 Web FIXED INCOME grants Users secured access to view and download the data set out in Annex 2 of this Appendix.

13.216.2 MANAGING PRINCIPLES

13.216.2.1 The access to the Web FIXED INCOME is delivered by LCH.CLEARNET, after the Users have duly filled in and signed the LCH.CLEARNET adequate Request Form

13.216.2.2 This Request Form shall be duly completed and signed by the Users and sent by registered letter to the appropriate LCH.CLEARNET interlocutor as set out on the Request Form.

13.216.2.3 The access to the Web FIXED INCOME is managed via a Secure Access Card. The Users shall strictly comply with the terms of use of the Secure Access Card as those terms are set out in clause 2.2 of this appendix, security measures set out in Schedule 1 of this Agreement and the associated Documentation.

13.216.2.4 The access to the Web FIXED INCOME can also be managed via the implementation of a push or pull solution (hereafter "Push/Pull Solution"), on request of the Users. Either the Users connects to the Appropriate Network and pulls the Web FIXED INCOME files onto its information system; or LCH.CLEARNET pushes the Web FIXED INCOME files on to the Clearing Member's information system via internet.

13.216.2.5 LCH.CLEARNET offers to its Users two technical solutions to get access to the Push / Pull Solution:

- either a PGP solution (encrypted), or
- a public solution (non encrypted solution).

The choice between these two solutions remains under the sole responsibility of the Users. Each User declares that he has the accurate knowledge to assess the consequences each solution may generate. In this context, the Users acknowledge and agree that LCH.CLEARNET would not suffer any liability regarding the consequences associated with the choice described above and notably where the Users opt for the public solution.

Further to clause 13 of the Access Agreement and notwithstanding anything to the contrary, in no circumstances whatsoever will LCH.CLEARNET be liable for any direct or indirect loss or damage including without limitation, loss of data or loss of profits arising out of, or in connection with, the use of the public solution. Any reliance the User places on information received through the public solution is therefore at its own risk.

Mis en forme : Retrait : Gauche : 0,63 cm

Mis en forme : Retrait : Gauche : 0,89 cm, Taquets de tabulation : 1,65 cm, Tabulation de liste + Pas à 0,76 cm

Mis en forme : Retrait : Gauche : 0,63 cm

Mis en forme : Retrait : Gauche : 0,63 cm, Taquets de tabulation : 1,65 cm, Tabulation de liste + Pas à 1,02 cm

Mis en forme : Retrait : Gauche : 0,63 cm

Mis en forme : Retrait : Gauche : 1,14 cm, Taquets de tabulation : 2,41 cm, Tabulation de liste + Pas à 1,27 cm

Mis en forme : Retrait : Gauche : 0,63 cm

Mis en forme : Retrait : Gauche : 1,14 cm, Taquets de tabulation : 2,41 cm, Tabulation de liste + Pas à 1,27 cm

Mis en forme : Retrait : Gauche : 0,63 cm

Mis en forme : Retrait : Gauche : 0,63 cm, Taquets de tabulation : 1,65 cm, Tabulation de liste + Pas à 1,02 cm

Mis en forme : Retrait : Gauche : 0,63 cm

Mis en forme : Retrait : Gauche : 1,14 cm, Taquets de tabulation : 2,41 cm, Tabulation de liste + Pas à 1,27 cm

Mis en forme : Retrait : Gauche : 0,63 cm

Mis en forme

Mis en forme : Retrait : Gauche : 0,63 cm

Mis en forme

Mis en forme : Retrait : Gauche : 0,63 cm

Mis en forme

Mis en forme

Mis en forme : Retrait : Gauche : 1,9 cm

Mis en forme : Retrait : Gauche : 0,63 cm

Mis en forme : Retrait : Gauche : 1,88 cm

Mis en forme : Retrait : Gauche : 0,63 cm

Appendix 3

4.1.4-16.2.6 Via the Web FIXED INCOME, LCH.CLEARNET provides the Users with the appropriate clearing data (files) as set out in Annex 2 "Clearing Data to be accessed via Web FIXED INCOME ".

43.2-616.2.7 The following events shall be immediately communicated to LCH.CLEARNET Account Managers by the Users Web FIXED INCOME administrator (MSA) in order to update the Users' accesses to the Web FIXED INCOME:

- 6) leavers (eg.resignation, dismissal, any cause of leaving);
- 7) change of function;
- 8) re-assignment of Secure Access Card;
- 9) loss of Secure Access Card or activation of Secure Access Card following the synchronisation or loss of PIN code.

43.2-716.2.8 Any Anomaly encountered regarding the proper use of the Web FIXED INCOME must be raised to LCH.CLEARNET Customer Technical Helpdesk (CTH) in compliance with the terms set out in Schedule 3 of this Agreement.

43.2-816.2.9 Any Changes required by the Users to LCH.CLEARNET regarding the Web FIXED INCOME shall be notified by the Users to LCH. CLEARNET by filling in the adequate Request Form "Web FIXED INCOME Change Request Form" attached in Annex 1 of this Appendix.

43-316.3 ANNEX 1 : Secure Access Card Management

43-416.4 General Principles

43.4-116.4.1 A token, hereafter referred as "Secure Access Card" aims at delivering to the Users a secured electronic access to the Web FIXED INCOME Clearing Access Solutions.

43.4-216.4.2 The Secure Access Card" is automatically provided by LCH. CLEARNET as soon as the Users request to be granted access to Web FIXED INCOME.

43-516.5 Managing principles

43.5-416.5.1 The Secure Access Card enables access to the Web FIXED INCOME production interface.

43.5-216.5.2 The Secure Access Card is provided to the Users when they issue a request to LCH.CLEARNET CTH in order to be granted access to the Web FIXED INCOME platform via Internet.

43.5-316.5.3 The Users may also wish to be granted access to the FIXED INCOME files via a "push or pull" solution, which consists in granting access to fixed income files via FTP network

43.5-416.5.4 The Users shall specify in the Request Form which Clearing Access Solution they require and also give details on the Users:

- 6) Names
- 7) Address (site, country)
- 8) E-mail address
- 9) Phone number
- 10) Fax number

43.5-516.5.5 LCH.CLEARNET CTH is in charge of providing the Users with the following relevant and sufficient information to have access to the Web FIXED INCOME production interface:

Mis en forme : Retrait : Gauche : 0,63 cm, Suspendu : 1,25 cm, Hiérarchisation + Niveau : 3 + Style de numérotation : 1, 2, 3, ... + Commencer à : 1 + Alignement : Gauche + Alignement : 0 cm + Tabulation après : 1,27 cm + Retrait : 1,27 cm, Taquets de tabulation : Pas à 1,27 cm

Mis en forme : Retrait : Gauche : 0,63 cm

Mis en forme : Retrait : Gauche : 1,14 cm, Taquets de tabulation : 2,41 cm, Tabulation de liste + Pas à 1,27 cm

Mis en forme : Retrait : Gauche : 1,9 cm, Hiérarchisation + Niveau : 1 + Style de numérotation : Puce + Alignement : 1,27 cm + Tabulation après : 1,9 cm + Retrait : 1,9 cm, Taquets de tabulation : 2,54 cm, Tabulation de liste + Pas à 1,9 cm

Mis en forme : Retrait : Gauche : 0,63 cm

Mis en forme : Retrait : Gauche : 1,14 cm, Taquets de tabulation : 2,41 cm, Tabulation de liste + Pas à 1,27 cm

Mis en forme : Retrait : Gauche : 0,63 cm

Mis en forme : Retrait : Gauche : 1,14 cm, Taquets de tabulation : 2,41 cm, Tabulation de liste + Pas à 1,27 cm

Mis en forme : Retrait : Gauche : 2,03 cm

Mis en forme ...

Mis en forme ...

Mis en forme ...

Mis en forme ...

Mis en forme ...

Mis en forme ...

Mis en forme ...

Mis en forme ...

Mis en forme ...

Mis en forme ...

Mis en forme ...

Mis en forme ...

Mis en forme ...

Mis en forme ...

Mis en forme ...

Mis en forme ...

Mis en forme ...

Mis en forme ...

Mis en forme ...

Mis en forme ...

Appendix 3

- 11) Pin code
- 12) Password
- 13) Instructions for use.

13.5.616.5.6 The Users shall comply with the instructions provided by LCH.CLEARNET in the relevant documentation.

13.5.716.5.7 Secure Access Cards operate for a limited period of time (3 years in average). It will therefore be replaced at LCH.CLEARNET initiative in due course.

13.5.816.5.8 Any Anomaly or problem encountered by the Users regarding the Web FIXED INCOME access via the Secure Access Card shall be raised to LCH.CLEARNET CTH.

13.5.916.5.9 The costs regarding the Web FIXED INCOME Clearing Access Solution are the ones set out in the effective LCH.CLEARNET fee grid.

13.616.6 ANNEX 2: Clearing data to be accessed via Web FIXED INCOME

13.6.116.6.1 The Web FIXED INCOME solution gives access to the Users to the following data:

- i. in real-time :
 - 1. daily operations (validated and refused) recorded by LCH.CLEARNET during the day
 - 2. all the instructions that are still unmatched reported every 30 min
- ii. at the end of day :
 - 1. reporting after batch on file reports
- iii. 08.00 next morning (Paris time) :
 - 1. financial report
- iv. monthly :
 - 1. invoicing details with possibility to have a view over 12 months

13.6.216.6.2 Hereunder is the list of files provided via the Web FIXED INCOME Clearing Access Solution:

Report name	Technical name	PRODUCTION: description	TEST: description
real time trade report	TRAD	XXPRYYYYMDDTRAD.txt	XXTSYYYYMDDTRAD.tx
initial margin	TRDG	XXPRYYYYMDDTRDG.txt	XXTSYYYYMDDTRDG.tx
Fails	SUSP	XXPRYYYYMDDSUSP.txt	XXTSYYYYMDDSUSP.tx
regularisations	REGU	XXPRYYYYMDDMARG.txt	XXTSYYYYMDDMARG.tx
Positions and margin s	MARG	XXPRYYYYMDDMARG.txt	XXTSYYYYMDDMARG.tx
Bonds and Repo financial statement	BRFS	XXPRYYYYMDDBRFS.txt	XXTSYYYYMDDBRFS.tx
detail of net instructions	DNET	XXPRYYYYMDDDNET.txt	XXTSYYYYMDDDNET.tx
trades of the day	DTRD	XXPRYYYYMDDTRD.txt	XXTSYYYYMDDTRD.tx
securities settlement prices	CVAL	XXPRYYYYMDDCVAL.txt	XXTSYYYYMDDCVAL.tx
detail of cleanet operations	KOND	XXPRYYYYMDDKOND.txt	XXTSYYYYMDDKOND.tx

Mis en forme : Retrait : Gauche : 2,03 cm, Avec puces + Niveau : 1 + Alignement : 1,4 cm + Tabulation après : 2,03 cm + Retrait : 2,03 cm, Pas de paragraphes solidaires, Taquets de tabulation : 2,67 cm, Tabulation de liste + Pas à 2,03 cm

Mis en forme : Retrait : Gauche : 0,63 cm

Mis en forme : Retrait : Gauche : 1,14 cm, Taquets de tabulation : 2,41 cm, Tabulation de liste + Pas à 1,27 cm

Mis en forme : Retrait : Gauche : 0,63 cm

Mis en forme : Retrait : Gauche : 1,14 cm, Taquets de tabulation : 2,41 cm, Tabulation de liste + Pas à 1,27 cm

Mis en forme : Retrait : Gauche : 0,63 cm

Mis en forme : Retrait : Gauche : 1,14 cm, Taquets de tabulation : 2,41 cm, Tabulation de liste + Pas à 1,27 cm

Mis en forme : Retrait : Gauche : 0,63 cm

Mis en forme : Retrait : Gauche : 1,14 cm, Taquets de tabulation : 2,41 cm, Tabulation de liste + Pas à 1,27 cm

Mis en forme : Retrait : Gauche : 2,03 cm

Mis en forme : Retrait : Gauche : 0,63 cm, Taquets de tabulation : 1,65 cm, Tabulation de liste + Pas à 1,02 cm

Mis en forme : Retrait : Gauche : 0,63 cm

Mis en forme : Retrait : Gauche : 1,14 cm, Taquets de tabulation : 2,41 cm, Tabulation de liste + Pas à 1,27 cm

Mis en forme : Retrait : Gauche : 0,63 cm

Mis en forme : Retrait : Gauche : 3,17 cm, Avec puces + Niveau : 3 + Alignement : 2,54 cm + Tabulation après : 3,17 cm + Retrait : 3,17 cm, Pas de paragraphes solidaires, Taquets de tabulation : 3,81 cm, Tabulation de liste + Pas à 0 cm + 0,89 cm + 3,17 cm + 7,5 cm

Mis en forme : Retrait : Gauche : 0,63 cm

Mis en forme : Retrait : Gauche : 1,14 cm, Taquets de tabulation : 2,41 cm, Tabulation de liste + Pas à 1,27 cm

Mis en forme : Retrait : Gauche : 0,63 cm

Appendix 3

Euro Financial statement	SFEU	XXPRYYYYMMDDSFEU.txt EP0000XXPRZZZ00(Day) (XML edition)	XXTSYYYYMMDDSFEU.txt EH0000XXTSZZZ00(Day) (XML edition)
Intra-day Euro Financial statement	SFE1	XXPRYYYYMMDDSFE1.txt EP0000XXPRZZZ01(Day) (XML edition)	XXTSYYYYMMDDSFE1.txt EH0000XXTSZZZ01(Day) (XML edition)
Forward repos	FORW	XXPR YYYYMMDDFORW.HTML XXPR YYYYMMDDFORW.TXT	XXTS YYYYMMDDFORW.HTML XXTS YYYYMMDDFORW.TXT
BOND LIST	BOND	XXPRYYYYMMDBBOND.txt	XXTSYYYYMMDBBOND.txt
Detail of same day instructions	SDRD	XXPRYYYYMMDDSDRD.TXT	XXTSYYYYMMDDSDRD.TXT

*** Only available for the Spanish government bonds clearing solution

1417 APPENDIX 3: DESCRIPTION OF THE LCAP

14.117.1 GENERAL PRINCIPLES

The LCAP is the Logical Certified Access Point which is a clearing gateway hosted in LCH.CLEARNET data centres, enabling the Users to gain access to LCH.CLEARNET Clearing Solution.
The LCAP is dedicated to the clearing services; therefore, no trading activity transits on a LCAP.

14.217.2 COMPOSITION OF THE LCAP

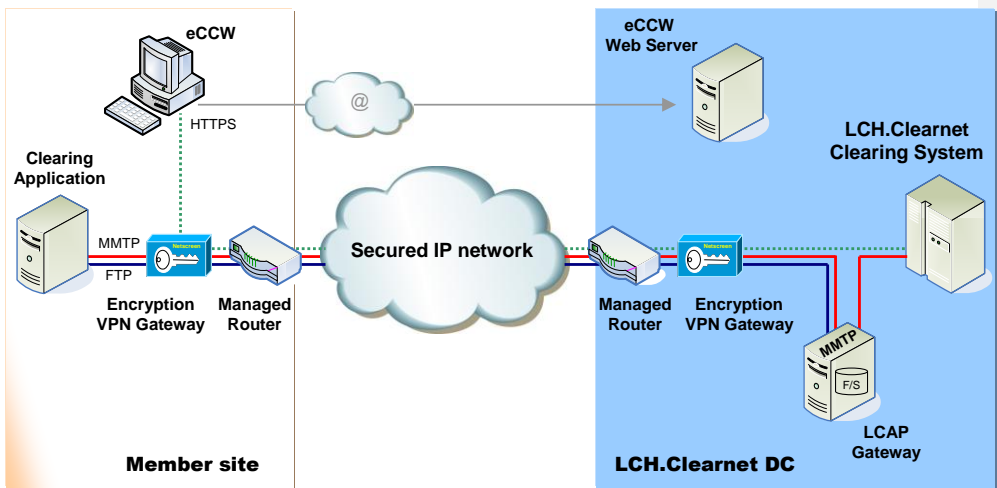
The LCAP supplies the Users with certified access points to the Clearing Solution enabling the management of incoming and outgoing data flows:

- Real time message flows, on the basis of exchange protocol established by LCH.CLEARNET (MMTP),
- File flows, on the basis of international file transfer protocol (FTP).

LCAP handles the certification, and storage of data interchanged between the Users and LCH.CLEARNET.

The LCAP is single-platform (live or testing), single function station and each LCAP can handle five subscribers (also referred as "SLE"s). It can be used both for cash and derivatives markets.

- Mis en forme : Retrait : Gauche : 1,9 cm
- Mis en forme : Retrait : Gauche : 0,63 cm
- Mis en forme : Retrait : Gauche : 0,89 cm, Taquets de tabulation : 1,65 cm, Tabulation de liste + Pas à 0,76 cm
- Mis en forme : Retrait : Gauche : 0,63 cm, Taquets de tabulation : 1,65 cm, Tabulation de liste + Pas à 1,02 cm
- Mis en forme : Retrait : Gauche : 0,63 cm
- Mis en forme : Retrait : Gauche : 0,63 cm, Taquets de tabulation : 1,65 cm, Tabulation de liste + Pas à 1,02 cm
- Mis en forme : Retrait : Gauche : 0,63 cm
- Mis en forme : Retrait : Gauche : 0,63 cm, Avec puces + Niveau : 1 + Alignement : 0 cm + Tabulation après : 0,63 cm + Retrait : 0,63 cm, Taquets de tabulation : 1,27 cm, Tabulation de liste + Pas à 0,63 cm
- Mis en forme : Retrait : Gauche : 0,63 cm



Appendix 3

44.317.3 MANAGING PRINCIPLES

44.3.117.3.1 Whenever Users require to be given access to the Clearing Solution, the appropriate Request Form, available from LCH.CLEARNET Account Managers, shall be duly completed and signed by the Users and sent by registered letter to the appropriate LCH.CLEARNET interlocutor as set out on the Request Form.

44.3.217.3.2 The LCAP provides the Users with the appropriate clearing data (real time messages, files) as set out in Annex 1 "Clearing Data to be accessed via LCAP".

44.3.317.3.3 Any Anomaly encountered regarding the proper use of the LCAP must be raised to LCH.CLEARNET Customer Technical Helpdesk (CTH) in compliance with the terms set out in Schedule 3 of this Agreement.

44.3.417.3.4 Any Changes required by the Users to LCH.CLEARNET regarding the LCAP shall be notified by the Users to the appropriate LCH.CLEARNET interlocutor by filling in the relevant Request Form available from LCH.CLEARNET Account Manager.

44.3.517.3.5 The invoicing principles applicable to the LCAP Clearing Solution are similar to those set out in Appendix 4 "Network Services".

44.417.4 ANNEX 1: Clearing data to be accessed via LCAP

CLEARING FILES:

1 CASH CLEARING FILES

1 CASH CLEARING FILES	PRODUCTION FILES	TEST FILES
Private positions	POS.SP***S3 PB.SP***B1	<input type="checkbox"/> POS.SH***S3 <input type="checkbox"/> PB.SH***B1
Settlement Connect CC= BE/ FR/ NL/PT/LU	EP*****ccSIF day EP*****ccBIF day	<input type="checkbox"/> EH*****ccSIF day <input type="checkbox"/> EH*****ccBIF day
Trade leg reconciliation (for CMF) - this file is charged	POS.SP***TC	<input type="checkbox"/> POS.SH***TC
Trade leg reconciliation (for TMF) - this file is charged – on LCAP only	POS.SP***TT	<input type="checkbox"/> POS.SH***TT
Public SPAN	SPAN.SPXXXBA SPAN.SPXXXBE	<input type="checkbox"/> SPAN.SHXXXBA <input type="checkbox"/> SPAN.SHXXXBE
Corporate Events	SPAN.SPXXXOA SPAN.SPXXXOB	<input type="checkbox"/> SPAN.SHXXXOA <input type="checkbox"/> SPAN.SHXXXOB
Instrument characteristics current business date (morning)	EPPUBLICXXLCCD02day	<input type="checkbox"/> EHPUBLICXXLCCD02day
Instrument characteristics current business date (evening)	EPPUBLICXXLCCD01day	<input type="checkbox"/> EHPUBLICXXLCCD01day
Instrument characteristics current business date (morning) only for Luxembourg	EPPUBLICXXLUCD02day	<input type="checkbox"/> EHPUBLICXXLUCD02day
Instrument characteristics current business date (evening) only for Luxembourg	EPPUBLICXXLUCD01day	<input type="checkbox"/> EHPUBLICXXLUCD01day
Position Report (for TMF) Cash Margin Report (for TMF) Add-ons Margin Report (for TMF)	EP000****TCPRnnqqq EP000****TCMRnnqqq EP000****TCAM00qqq	<input type="checkbox"/> EH000****TCPRnnqqq <input type="checkbox"/> EH000****TCMRnnqqq <input type="checkbox"/> EH000****TCAM00qqq
2 DERIVATIVES CLEARING FILES		

- Mis en forme : Retrait : Gauche : 0,63 cm, Taquets de tabulation : 1,65 cm, Tabulation de liste + Pas à 1,02 cm
- Mis en forme : Retrait : Gauche : 0,63 cm
- Mis en forme : Retrait : Gauche : 1,14 cm, Taquets de tabulation : 2,41 cm, Tabulation de liste + Pas à 1,27 cm
- Mis en forme : Retrait : Gauche : 0,63 cm
- Mis en forme : Retrait : Gauche : 1,14 cm, Taquets de tabulation : 2,41 cm, Tabulation de liste + Pas à 1,27 cm
- Mis en forme : Retrait : Gauche : 0,63 cm
- Mis en forme : Retrait : Gauche : 1,14 cm, Taquets de tabulation : 2,41 cm, Tabulation de liste + Pas à 1,27 cm
- Mis en forme : Retrait : Gauche : 0,63 cm
- Mis en forme : Retrait : Gauche : 1,14 cm, Taquets de tabulation : 2,41 cm, Tabulation de liste + Pas à 1,27 cm
- Mis en forme : Retrait : Gauche : 0,63 cm
- Mis en forme : Retrait : Gauche : 1,14 cm, Taquets de tabulation : 2,41 cm, Tabulation de liste + Pas à 1,27 cm
- Mis en forme : Retrait : Gauche : 0,63 cm
- Mis en forme : Retrait : Gauche : 1,14 cm, Taquets de tabulation : 2,41 cm, Tabulation de liste + Pas à 1,27 cm
- Mis en forme : Retrait : Gauche : 0,63 cm
- Mis en forme : Retrait : Gauche : 1,14 cm, Taquets de tabulation : 2,41 cm, Tabulation de liste + Pas à 1,02 cm
- Mis en forme : Retrait : Gauche : 0,63 cm

Appendix 3

Private Matif positions & performance bond	POS.FP***S1 POS.FP***S2 POS.FP***S3 PB.FP***B1	<input type="checkbox"/>	POS.FH***S1 POS.FH***S2 POS.FH***S3 PB.FP***B1
Public Matif SPAN	SPAN.FPXXXBA SPAN.FPXXXBB SPAN.FPXXXBC	<input type="checkbox"/>	SPAN.FHXXXBA SPAN.FHXXXBB SPAN.FHXXXBC
Private Moneyp positions & performance bond	POS.OP***S1 POS.OP***S2 POS.OP***S3 PB.OP***B3	<input type="checkbox"/>	POS.OH***S1 POS.OH***S2 POS.OH***S3 PB.OP***B3
Daily operations Moneyp (all products) - this file is charged	POS.OP***J0 POS.OP***J1 POS.OP***J2	<input type="checkbox"/>	POS.OH***J0 POS.OH***J1 POS.OH***J2
Daily operations Moneyp (Dutch products and trading fees all derivatives clearing segments) - this file is charged	POS.OP***J3	<input type="checkbox"/>	POS.OH***J3
Public Moneyp SPAN	SPAN.OPXXXBD	<input type="checkbox"/>	SPAN.OHXXXBD
Derivatives instrument characteristics for the current business date (morning)	EPPUBLICXXLCDD0day	<input type="checkbox"/>	EHPUBLICXXLCDD01day
Derivatives instrument characteristics for the current business date (intra-day)	EPPUBLICXXLCDI01day	<input type="checkbox"/>	EHPUBLICXXLCDI01day
Derivatives clearing elements	EPPUBLICXXLCDC01day	<input type="checkbox"/>	EHPUBLICXXLCDC01day
Derivatives open positions	EPPUBLICXXLCDP01day EPPUBLICXXLCDP02day EPPUBLICXXLCDP03day EPPUBLICXXLCDP04day	<input type="checkbox"/>	EHPUBLICXXLCDP01day EHPUBLICXXLCDP02day EHPUBLICXXLCDP03day EHPUBLICXXLCDP04day
Derivatives exercise	EPPUBLICXXLCDE01day EPPUBLICXXLCDE02day	<input type="checkbox"/>	EHPUBLICXXLCDE01day EHPUBLICXXLCDE02day
Underlying cash closing price	EPPUBLICXXLCCC01day	<input type="checkbox"/>	EHPUBLICXXLCCC01day

CREDIT DEFAULT SWAP (CDS) FILES

Mis en forme : Retrait : Gauche : 0,63 cm

Mis en forme : Retrait : Gauche : 0,89 cm

Trade management reports		Production	<input type="checkbox"/>	Test	EUA1	<input type="checkbox"/>	EUA2	<input type="checkbox"/>
Clearing Eligibility Report	CCER	EPXXXXXXXXCCERnnqq.csv		EHXXXXXXXXCCERnnqq.csv				
Matching and Eligibility Report	CMEL	EPXXXXXXXXCMELnnqq.csv EPXXXXXXXXCMELnnqq.xml		EHXXXXXXXXCMELnnqq.csv EHXXXXXXXXCMELnnqq.xml				
Bilateral Trades Report	CBTR	EPXXXXXXXXCBTRnnqq.xml EPXXXXXXXXCBTRnnqq.csv		EHXXXXXXXXCBTRnnqq.xml EHXXXXXXXXCBTRnnqq.csv				
Cleared Trades Report	CCTR	EPXXXXXXXXCCTRnnqq.xml EPXXXXXXXXCCTRnnqq.csv		EHXXXXXXXXCCTRnnqq.xml EHXXXXXXXXCCTRnnqq.csv				
TIW Operations Report	CCLR	EPXXXXXXXXCCLRnnqq.csv		EHXXXXXXXXCCLRnnqq.csv				
Restructuring Matched Pairs	CMRP	EPXXXXXXXXCMRPnnqq.xml EPXXXXXXXXCMRPnnqq.csv		EHXXXXXXXXCMRPnnqq.xml EHXXXXXXXXCMRPnnqq.csv				
Cross Trades Report	CXTR	EPXXXXXXXXCXTRnnqq.csv		EHXXXXXXXXCXTRnnqq.csv				
Compression Result File	CCPR	EPXXXXXXXXCCPRnnqq.csv		EHXXXXXXXXCCPRnnqq.csv				
CER Result File	RCER	EPXXXXXXXXRCERnnqq.csv		EHXXXXXXXXRCERnnqq.csv				
Variation Margin Report House	CVMH	EPXXXXXXXXCVMHnnqq.csv EPXXXXXXXXCVMHnnqq.xml		EHXXXXXXXXCVMHnnqq.csv EHXXXXXXXXCVMHnnqq.xml				
Variation Margin Report Client	CVMC	EPXXXXXXXXCVMCnnqq.csv EPXXXXXXXXCVMCnnqq.xml		EHXXXXXXXXCVMCnnqq.csv EHXXXXXXXXCVMCnnqq.xml				

Mis en forme : Retrait : Gauche : 0,63 cm

Public reports		Production	<input type="checkbox"/>	Test	EUA1	<input type="checkbox"/>	EUA2	<input type="checkbox"/>
Open Interest	COIN	EPPUBLICXXCOINnnqq.csv EHPUBLICXXCOINnnqq.xml		EHPUBLICXXCOINnnqq.csv EHPUBLICXXCOINnnqq.xml				
Product Index	CPDI	EPPUBLICXXCPDIInnqq.csv EPPUBLICXXCPDIInnqq.xml		EHPUBLICXXCPDIInnqq.csv EHPUBLICXXCPDIInnqq.xml				
Product Single Names	CPDS	EPPUBLICXXCPDSnnqq.csv EPPUBLICXXCPDSnnqq.xml		EHPUBLICXXCPDSnnqq.csv EHPUBLICXXCPDSnnqq.xml				
Event File - Restructuring	CEVR	EPPUBLICXXCEVRnnqq.csv EPPUBLICXXCEVXnnqq.xml		EHPUBLICXXCEVRnnqq.csv EHPUBLICXXCEVXnnqq.xml				

Appendix 3

Event File - Rename	CEVN	EPPUBLICXXCEVNnnqq.csv EPPUBLICXXCEVXnnqq.xml	EHPUBLICXXCEVNnnqq.csv EHPUBLICXXCEVXnnqq.xml
Event File - Failure to Pay / Bankruptcy	CEVF	EPPUBLICXXCEVFnnqq.csv EPPUBLICXXCEVXnnqq.xml	EHPUBLICXXCEVFnnqq.csv EHPUBLICXXCEVXnnqq.xml
Event File - Succession	CEVS	EPPUBLICXXCEVSnnqq.csv EPPUBLICXXCEVXnnqq.xml	EHPUBLICXXCEVSnnqq.csv EHPUBLICXXCEVXnnqq.xml

Risk management reports		Production	<input type="checkbox"/>	Test	EUA1	<input type="checkbox"/>	EUA2	<input type="checkbox"/>
Margin Result House	CMRG	EPXXXXXXXXCMRGnnqq.csv EPXXXXXXXXCMRGnnqq.xml		EHXXXXXXXXCMRGnnqq.csv EHXXXXXXXXCMRGnnqq.xml				
Margin Result Client	CMRC	EPXXXXXXXXCMRCnnqq.csv EPXXXXXXXXCMRCnnqq.xml		EHXXXXXXXXCMRCnnqq.csv EHXXXXXXXXCMRCnnqq.xml				
Risk Portfolio	CPTF	EPXXXXXXXXCPTFnnqq.csv EPXXXXXXXXCPTFnnqq.xml		EHXXXXXXXXCPTFnnqq.csv EHXXXXXXXXCPTFnnqq.xml				

Mis en forme : Retrait : Gauche : 0,63 cm

Simulation reports		Production	<input type="checkbox"/>	Test	EUA1	<input type="checkbox"/>	EUA2	<input type="checkbox"/>
Simulation Matching and Eligibility Report	SMEL	EPXXXXXXXXSMELnnqq.csv EPXXXXXXXXSMELnnqq.xml		EHXXXXXXXXSMELnnqq.csv EHXXXXXXXXSMELnnqq.xml				
Simulation Member Margin Result House	SMRG	EPXXXXXXXXSMRGnnqq.csv EPXXXXXXXXSMRGnnqq.xml		EHXXXXXXXXSMRGnnqq.csv EHXXXXXXXXSMRGnnqq.xml				
Simulation Risk Portfolio	SPTF	EPXXXXXXXXSPTFnnqq.csv EPXXXXXXXXSPTFnnqq.xml		EHXXXXXXXXSPTFnnqq.csv EHXXXXXXXXSPTFnnqq.xml				

Mis en forme : Retrait : Gauche : 0,63 cm

Treasury/Collateral reports		Production	<input type="checkbox"/>	Test	EUA1	<input type="checkbox"/>	EUA2	<input type="checkbox"/>
AC0101E – Invoicing cash call report (fees)	CNMC	EP000XXXXX101A00day.xml EP000XXXXXCNMcnnday.txt		EH000XXXXX101A00day.xml EH000XXXXXCNMcnnday.txt				
AC0102E – Specific default fund market report	CNMC	EP000XXXXX102A00day.xml EP000XXXXXCNMcnnday.txt		EH000XXXXX102A00day.xml EH000XXXXXCNMcnnday.txt				
AC0102E – Specific market margin report	CNMC	EP000XXXXX102B00day.xml EP000XXXXXCNMcnnday.txt		EH000XXXXX102B00day.xml EH000XXXXXCNMcnnday.txt				
AC0102E – Specific market non-margin report	CNMC	EP000XXXXX102C00day.xml EP000XXXXXCNMcnnday.txt		EH000XXXXX102C00day.xml EH000XXXXXCNMcnnday.txt				
AC0103E – Global cash call report	CNMC	EP000XXXXX103A00day.xml EP000XXXXXCNMcnnday.txt		EH000XXXXX103A00day.xml EH000XXXXXCNMcnnday.txt				
AC0104E – Daily accounting report	CNMC	EP000XXXXX104A00day.xml EP000XXXXXCNMcnnday.txt		EH000XXXXX104A00day.xml EH000XXXXXCNMcnnday.txt				
AC0105E – Monthly accounting report	CNMC	EP000XXXXX105A00day.xml EP000XXXXXCNMcnnday.txt		EH000XXXXX105A00day.xml EH000XXXXXCNMcnnday.txt				
AC0106E – Interests monthly report	CNMC	EP000XXXXXCNMcnnday.txt		EH000XXXXXCNMcnnday.txt				
AC0110E – Financial and global situation	CNMC	EP000XXXXX110A00day.xml EP000XXXXXCNMcnnday.txt		EH000XXXXX110A00day.xml EH000XXXXXCNMcnnday.txt				
AC0111E – History of withdrawal & deposit requests	CNMC	EP000XXXXX111A00day.xml EP000XXXXXCNMcnnday.txt		EH000XXXXX111A00day.xml EH000XXXXXCNMcnnday.txt				
AC0112E – Detail of regularisations report	CNMC	EP000XXXXX112A00day.xml EP000XXXXXCNMcnnday.txt		EH000XXXXX112A00day.xml EH000XXXXXCNMcnnday.txt				
AC0113E – Net payment position document	CNMC	EP000XXXXXCNMcnnday.txt		EH000XXXXXCNMcnnday.txt				
AC0126E – Monthly interest scales report	CNMC	EP000XXXXX126A00day.xml EP000XXXXXCNMcnnday.txt		EH000XXXXX126A00day.xml EH000XXXXXCNMcnnday.txt				
AC0129E - CDS Default fund contribution	CNMC	EP000XXXXXCNMcnnday.txt		EH000XXXXXCNMcnnday.txt				
Collateral Value Situation Report	CCVS	EPXXXXXXXXCCVSnnqq.csv EPXXXXXXXXCCVSnnqq.xml		EHXXXXXXXXCCVSnnqq.csv EHXXXXXXXXCCVSnnqq.xml				

Mis en forme : Retrait : Gauche : 0,63 cm

Mis en forme : Retrait : Gauche : 0,63 cm

1.4 APPENDIX 4: DESCRIPTION OF NETWORK SERVICES

14.54.1 NETWORK SERVICES PRINCIPLES

14.5.14.1.1 LCH.CLEARNET, through its Subcontractors, shall provide the Users with an end to end managed and secured IP network between the Users sites and LCH.CLEARNET data centres.

14.5.24.1.2 LCH.CLEARNET Network Services is compliant with the best security and business continuity practices.

14.5.34.1.3 The Users shall select one of LCH.CLEARNET network solutions as detailed in the relevant Request Form.

14.64.2 MANAGING PRINCIPLES

14.6.14.2.1 In order to guarantee full resiliency, the Network Services shall meet the below principles:

- 1. Resilient network equipments (2x[CPE router + switch + VPN gateway]) supplied and managed by the network Subcontractor, with automatic mechanisms of failover;
- 2. Resilient Users' access from Users' premises to PoP's provider, using dual carriers;
- 3. Dual POP per city;
- 4. Fully Meshed Backbone;
- 5. Resilient central access in LCH.CLEARNET DataCenters (DC / DR).

14.6.24.2.2 The connectivity minimum bandwidth shall be of 2Mbps (which can handle a maximum of 9 SLEs).

14.6.34.2.3 All clearing flows (real-time messaging and files transfers) are encrypted at IP level, using VPN gateway supplied and managed by the Subcontractor (end-to-end IPsec tunnelling).

14.6.44.2.4 The Users may choose to mutualise their Network Services to access both LCH.CLEARNET Limited and S.A clearing services. In that case, the User shall elect the LCH.CLEARNET group entity to whom it will order the Network Services. The entity selected will invoice the User the fees corresponding to the Network Services allowing it to access both SA and Limited clearing services.

14.6.54.2.5 Where a User has ordered its Network Services to LCH.CLEARNET Limited in order to access both LCH.CLEARNET Group entities, and faces any difficulty to access LCH.CLEARNET SA, the User will however benefit from the Support Services described in Schedule 3 of this Agreement.

Mis en forme : Retrait : Gauche : 0,89 cm, Hiérarchisation + Niveau : 1 + Style de numérotation : 1, 2, 3, ... + Commencer à : 1 + Alignement : Gauche + Alignement : 0 cm + Tabulation après : 0,76 cm + Retrait : 0,76 cm, Taquets de tabulation : 1,65 cm, Tabulation de liste + Pas à 0,76 cm

Mis en forme : Retrait : Gauche : 0,63 cm, Taquets de tabulation : 1,65 cm, Tabulation de liste + Pas à 1,02 cm

Mis en forme : Retrait : Gauche : 0,63 cm

Mis en forme : Retrait : Gauche : 1,14 cm, Taquets de tabulation : 2,41 cm, Tabulation de liste + Pas à 1,27 cm

Mis en forme : Retrait : Gauche : 0,63 cm

Mis en forme : Retrait : Gauche : 1,14 cm, Taquets de tabulation : 2,41 cm, Tabulation de liste + Pas à 1,27 cm

Mis en forme : Retrait : Gauche : 0,63 cm

Mis en forme : Retrait : Gauche : 1,14 cm, Taquets de tabulation : 2,41 cm, Tabulation de liste + Pas à 1,27 cm

Mis en forme : Retrait : Gauche : 0,63 cm

Mis en forme : Retrait : Gauche : 0,63 cm, Taquets de tabulation : 1,65 cm, Tabulation de liste + Pas à 1,02 cm

Mis en forme : Retrait : Gauche : 0,63 cm

Mis en forme

Mis en forme

Mis en forme : Retrait : Gauche : 0,63 cm

Mis en forme

Mis en forme : Retrait : Gauche : 0,63 cm

Mis en forme

Mis en forme : Retrait : Gauche : 0,63 cm

Mis en forme : Retrait : Gauche : 1,88 cm

Mis en forme : Retrait : Gauche : 0,63 cm

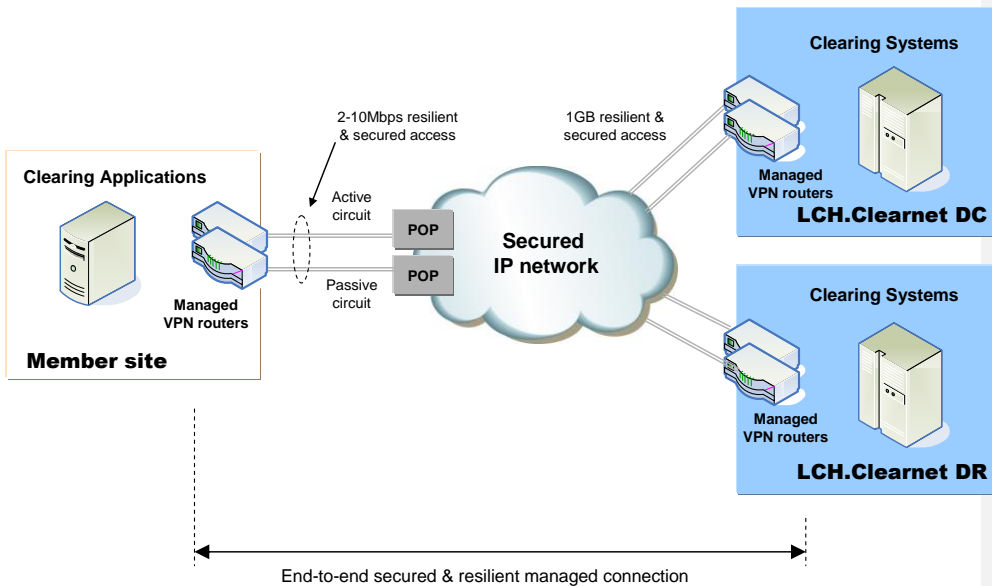
Mis en forme

Mis en forme : Retrait : Gauche : 0,63 cm

Appendix 3

14.6.64.2.6 Network Services Acceptance Procedure: following the implementation of the first production LCAP (or test LCAP if the Users do not order any production LCAP), LCH.CLEARNET will in cooperation with the Users, execute a set of acceptance tests to assess if the Network Services along with the LCAP (either test or production when relevant) are operational (hereafter referred as "Operational Service" date). After the completion of the acceptance tests, LCH.CLEARNET will send to the Users an e-mail to be construed as an acceptance test certificate. If the Users do not contest this acceptance test certificate within 7 Calendar Days, the Network Services along with the LCAP will be deemed to be accepted and LCH.CLEARNET will therefore be entitled to invoice the Users as from the Operational Service date.

Mis en forme : Retrait : Gauche : 1,14 cm, Taquets de tabulation : 2,41 cm, Tabulation de liste + Pas à 1,27 cm



Mis en forme : Retrait : Gauche : 1,88 cm

Mis en forme : Retrait : Gauche : 4,5 cm

Mis en forme : Retrait : Gauche : 3,86 cm

Mis en forme : Retrait : Gauche : 0,63 cm

14.74.3 APPLICABLE USE POLICY

14.7.14.3.1 SCOPE AND APPLICABILITY

This Acceptable Use Policy ("AUP") provides a code of conduct applicable to all entity using the Network Services, including the Users and the network services providers' other customers and their employees, agents, contractors, affiliates, subsidiaries, and, if applicable, clients (all together referred as Users) in order to (i) protect all Users and assure them of the consistent, high level of trust necessary for them to use the Network Services safely, securely and effectively; and (ii) deter the abuse or misuse of the Network Services by any User.

14.7.24.3.2 ACCEPTABLE USE

Each User shall use the Network Services to conduct its business, publish and access content, and provide access to applications in accordance with this AUP and any applicable terms and conditions of this Agreement.

Mis en forme : Retrait : Gauche : 0,63 cm, Taquets de tabulation : 1,65 cm, Tabulation de liste + Pas à 1,02 cm

Mis en forme : Retrait : Gauche : 0,63 cm

Mis en forme : Retrait : Gauche : 1,14 cm, Taquets de tabulation : 2,41 cm, Tabulation de liste + Pas à 1,27 cm

Mis en forme : Retrait : Gauche : 1,9 cm

Mis en forme : Retrait : Gauche : 0,63 cm

Mis en forme : Retrait : Gauche : 1,14 cm, Taquets de tabulation : 2,41 cm, Tabulation de liste + Pas à 1,27 cm

Mis en forme : Retrait : Gauche : 0,63 cm

Appendix 3

44.7.34.3.3 UNACCEPTABLE USE

44.7.3.14.3.3.1 Illegal Use

Users are prohibited from using the Network Services to commit or aid in the commission of any crime, fraud, or act which violates any applicable local, national, or international law or regulation.

44.7.3.24.3.3.2 Prohibited Content

Users are prohibited from using the Network Services to transmit, distribute, disseminate, publish, or store:

- 1) any material in violation of any applicable local, national, or international law or regulation;
- 2) material that infringes any patent, trademark, trade secret, copyright, or other intellectual property right of any Party;
- 3) material that is defamatory, abusive, or harassing; or that threatens or encourages bodily harm, destruction of property, or infringement of the lawful rights of any Party; or otherwise constitutes an illegal threat;
- 4) material that violates the privacy of any Party as protected by applicable local, national, or international law or regulation;
- 5) material containing software viruses, worms, Trojan horses, time bombs, cancelbots, or other harmful or deleterious computer code, or any computer code, files, or programs designed to disrupt; destroy; disable; invade, gain unauthorized access to; or corrupt, observe, or modify without authorization, any data; network transmissions; software; computing or network devices; or telecommunications equipment;
- 6) unsolicited or unauthorized advertising, promotional materials, bulk email, or chain letters.

44.7.3.34.3.3.3 Eavesdropping

Users are prohibited from the unauthorized interception or monitoring of any data or messages transmitted over the Network.

44.7.3.44.3.3.4 Unauthorized access

Users are prohibited from employing the Network Services to access any computer, network, or data without authorization or in a manner that exceeds authorization for any purpose, including but not limited to:

- 7) retrieve, alter, or destroy data;
- 8) probe, scan or test the vulnerability of a system or network; or
- 9) breach or defeat system or network security measures such as authentication, authorization, confidentiality, intrusion detection, or monitoring.

44.7.3.54.3.3.5 Impersonation and forgery

Users are prohibited from:

- 1) impersonating any Party or entity by adding, removing, or altering header information of Network, email, or other messages transmitted over the Network;
- 2) transmitting over the Network messages that have been electronically signed using a fraudulently obtained public key certificate or with a forged electronic signature; or
- 3) using the Network Services to commit any other form of forgery or illegal or unauthorized impersonation.

Mis en forme : Retrait : Gauche : 1,14 cm, Taquets de tabulation : 2,41 cm, Tabulation de liste + Pas à 1,27 cm

Mis en forme : Retrait : Gauche : 0,63 cm

Mis en forme : Retrait : Gauche : 2,39 cm, Taquets de tabulation : 3,91 cm, Tabulation de liste + Pas à 1,52 cm

Mis en forme : Retrait : Gauche : 0,63 cm

Mis en forme : Retrait : Gauche : 2,39 cm, Taquets de tabulation : 3,91 cm, Tabulation de liste + Pas à 1,52 cm

Mis en forme : Retrait : Gauche : 0,63 cm, Paragraphes solidaires

Mis en forme : Retrait : Gauche : 0,63 cm

Mis en forme : Retrait : Gauche : 1,27 cm, Suspendu : 0,62 cm, Avec puces + Niveau : 1 + Alignement : 1,9 cm + Tabulation après : 2,54 cm + Retrait : 2,54 cm, Taquets de tabulation : Pas à 2,54 cm

Mis en forme : Retrait : Gauche : 0,63 cm

Mis en forme : Retrait : Gauche : 2,39 cm, Taquets de tabulation : 3,91 cm, Tabulation de liste + Pas à 1,52 cm

Mis en forme : Retrait : Gauche : 0,63 cm

Mis en forme : Retrait : Gauche : 2,39 cm, Taquets de tabulation : 3,91 cm, Tabulation de liste + Pas à 1,52 cm

Mis en forme : Retrait : Gauche : 0,63 cm

Mis en forme : Retrait : Gauche : 2,54 cm, Avec puces + Niveau : 1 + Alignement : 1,9 cm + Tabulation après : 2,54 cm + Retrait : 2,54 cm, Taquets de tabulation : 3,17 cm, Tabulation de liste + Pas à 2,54 cm

Mis en forme : Retrait : Gauche : 0,63 cm

Mis en forme : Retrait : Gauche : 2,39 cm, Taquets de tabulation : 3,91 cm, Tabulation de liste + Pas à 1,52 cm

Mis en forme : Retrait : Gauche : 0,63 cm

Mis en forme

Mis en forme : Retrait : Gauche : 0,63 cm

Appendix 3

44.7.3.64.3.3.6 Malicious disruption

Users are prohibited from interfering with or disrupting (i) the business operations, service, or function of the Network, any User, or any computer, host, network, or telecommunications device; or (ii) the legitimate use of the Network Services by any User including by deliberate attempts to overwhelm an application, computer system, network device, or network.

Mis en forme : Retrait : Gauche : 2,39 cm, Taquets de tabulation : 3,91 cm, Tabulation de liste + Pas à 1,52 cm
 Mis en forme : Retrait : Gauche : 0,63 cm

44.7.3.74.3.3.7 Security auditing, assessments, penetration tests

Users are prohibited from conducting security audits, assessments, and penetration tests of the Network.

Mis en forme : Retrait : Gauche : 2,39 cm, Taquets de tabulation : 3,91 cm, Tabulation de liste + Pas à 1,52 cm
 Mis en forme : Retrait : Gauche : 0,63 cm

44.7.3.84.3.3.8 Misuse of CPE

Users shall not tamper with or attempt to gain unauthorized access to CPE (routers, cables, connectors).

Mis en forme : Retrait : Gauche : 2,39 cm, Taquets de tabulation : 3,91 cm, Tabulation de liste + Pas à 1,52 cm
 Mis en forme : Retrait : Gauche : 0,63 cm

14.7.44.3.4 CONFIDENTIALITY

44.7.4.14.3.4.1 Confidential Information

Each User shall hold in confidence any information it receives from LCH.CLEARNET or any Clearing Access Solution Third Party Provider related to the security and architecture of the Network Services, including but not limited to: Network routing information, addresses, device configurations, topology, host names, system configurations, security access codes, encryption and authentication keys, passwords, controls, processes, procedures, and safeguards. Users shall not disclose this information except on a need-to-know basis and only to employees, agents, subcontractors, or other third parties who are contractually bound to non-disclosure obligations.

Mis en forme : Retrait : Gauche : 1,14 cm, Taquets de tabulation : 2,41 cm, Tabulation de liste + Pas à 1,27 cm
 Mis en forme : Retrait : Gauche : 0,63 cm
 Mis en forme : Retrait : Gauche : 2,39 cm, Taquets de tabulation : 3,91 cm, Tabulation de liste + Pas à 1,52 cm
 Mis en forme : Retrait : Gauche : 0,63 cm

44.7.4.24.3.4.2 Disclosure

LCH.CLEARNET reserves the right to disclose information relating to Users' activities that may be in violation of this AUP:

- 1) to law enforcement, regulatory, or other agencies in response to lawful requests including, without limitation, as required by any securities exchange or regulatory or governmental body to which a User is subject;
- 2) to the extent required by law or for the purposes of judicial process; or
- 3) to other Users to protect the rights, property, and operations of the Network Services, and the public including, without limitation, the right to notify a User of any event, condition, or activity, of which LCH.CLEARNET is aware, potentially affecting the security or operations of said Users' computer networks and systems.

Mis en forme : Retrait : Gauche : 2,39 cm, Taquets de tabulation : 3,91 cm, Tabulation de liste + Pas à 1,52 cm
 Mis en forme : Retrait : Gauche : 0,63 cm
 Mis en forme : Retrait : Gauche : 1,27 cm, Avec puces + Niveau : 1 + Alignement : 0,63 cm + Tabulation après : 1,27 cm + Retrait : 1,27 cm, Taquets de tabulation : 1,9 cm, Tabulation de liste + Pas à 1,27 cm

44.7.54.3.5 MONITORING/ENFORCEMENT

44.7.5.14.3.5.1 Network Usage Monitoring

LCH.CLEARNET reserves the right to monitor all usage of the Network for purposes of Network management, performance management, capacity planning, and security monitoring and management. Usage monitoring may include:

- 4) monitoring (i) source and destination addresses, protocol type, size and other attributes of individual network packets other than content, and (ii) network routes traversed by individual packets within the Network as necessary to detect potential, incipient, or actual security breaches, intrusions, attacks, or malicious code;

Mis en forme : Retrait : Gauche : 0,63 cm
 Mis en forme : Retrait : Gauche : 1,14 cm, Taquets de tabulation : 2,41 cm, Tabulation de liste + Pas à 1,27 cm
 Mis en forme : Retrait : Gauche : 0,63 cm
 Mis en forme : Retrait : Gauche : 2,39 cm, Taquets de tabulation : 3,91 cm, Tabulation de liste + Pas à 1,52 cm
 Mis en forme : Retrait : Gauche : 0,63 cm
 Mis en forme ...

Appendix 3

- 5) using devices and techniques such as network intrusion detection, host intrusion detection, and system integrity auditing to inspect packet contents for the presence of software viruses, worms, Trojan horses, time bombs, cancelbots, or other harmful or deleterious computer code, or any computer code, files, or programs designed to disrupt; destroy; disable; invade; gain unauthorized access to; or corrupt, observe, or modify without authorization, any data; network transmissions; software; computing or network devices; or telecommunications equipment, provided, however, that LCH.CLEARNET shall use such detection devices and techniques solely for the aforesaid purpose; and
- 6) monitoring network traffic for patterns potentially indicating the misuse or abuse of the Network.

14.7.5.24.3.5.2 Content Monitoring

LCH.CLEARNET does not monitor, review, edit, or censor information transmitted by Users on the Network. Users are solely responsible for the information they transmit on the Network and for complying with all laws and regulations applicable to such information. Users acknowledge that LCH.CLEARNET is not responsible for the truthfulness, accuracy, or legality of any information transmitted, published, or accessed by Users on the Network.

14.7.5.34.3.5.3 Investigations

LCH.CLEARNET reserves the right to:

- 1) initiate investigations into potential misuse or abuse of the Network Services by Users;
- 2) involve, and cooperate to the fullest extent possible with, law enforcement, regulatory, and other authorized agencies in the investigation and prosecution of crimes alleged or suspected to have been committed using the Network Services;
- 3) terminate or suspend use of the Network Services by a User found to have violated this Acceptable Use Policy or other applicable terms and conditions to which Users are legally bound to LCH.CLEARNET; and
- 4) immediately, without notice, and at LCH.CLEARNET's sole discretion, completely or partially suspend use of, and access to, the Network Services by any User to the extent, as LCH.CLEARNET determines in its sole discretion, required to maintain and protect the security and operations of (i) LCH.CLEARNET or the Network Services, or (ii) any User or any User's computer networks or systems, where LCH.CLEARNET reasonably believes such security and operations are under potential, threatened, or actual attack or compromise.

In each case LCH.CLEARNET suspends the Network Services, it shall advise its Users

CLEARNET as promptly as possible. Such Service may be restored, within LCH.CLEARNET sole discretion, after any violation or threat has been remedied or corrected.

Mis en forme : Retrait : Gauche : 1,9 cm

Mis en forme : Retrait : Gauche : 2,39 cm, Taquets de tabulation : 3,91 cm, Tabulation de liste + Pas à 1,52 cm

Mis en forme : Retrait : Gauche : 0,63 cm

Mis en forme : Retrait : Gauche : 2,39 cm, Taquets de tabulation : 3,91 cm, Tabulation de liste + Pas à 1,52 cm

Mis en forme : Retrait : Gauche : 0,63 cm

Mis en forme : Retrait : Gauche : 1,27 cm, Avec puces + Niveau : 1 + Alignement : 0,63 cm + Tabulation après : 1,27 cm + Retrait : 1,27 cm, Taquets de tabulation : 1,9 cm, Tabulation de liste + Pas à 1,27 cm

Mis en forme : Retrait : Gauche : 1,27 cm

Mis en forme : Retrait : Gauche : 0,63 cm

5 APPENDIX 5 DESCRIPTION OF CMS

15-15.1 GENERAL PRINCIPLES

15-1-15.1.1 CMS is a graphical user interface provided over Internet by LCH.CLEARNET for its Users, that enables them to visualise their collateral positions and create collateral instruction requests.

15-25.2 MANAGING PRINCIPLES

15-2-15.2.1 The access to the CMS is delivered by LCH.CLEARNET, after the Users have duly filled in and signed the LCH.CLEARNET adequate Request Form available on Portal.

15-2-25.2.2 This Request Form shall be duly completed and signed by the Users and sent by registered letter to the appropriate LCH.CLEARNET interlocutor as set out on the Request Form.

15-2-35.2.3 The Internet access to the CMS is managed via passwords.

15-2-45.2.4 Via CMS, LCH.CLEARNET provides the Users with the appropriate collateral data (real time data) as set out in Annex 2 "Collateral Data to be visualised via CMS" of this appendix.

15-2-55.2.5 Via CMS, LCH.CLEARNET provides the Users with the possibility to create collateral instructions aimed at LCH. CLEARNET.

15-2-65.2.6 Via CMS, LCH.CLEARNET provides the Users with a status on their past and current Collateral instructions as set out in Annex 3 "Collateral instructions workflow in CMS" of this appendix.

15-2-75.2.7 Any Anomaly encountered regarding the proper use of CMS must be raised to LCH. CLEARNET Customer Technical Helpdesk (CTH) in compliance with the terms set out in Schedule 3 of this Agreement.

15-2-85.2.8 Any Changes requested by the Users from LCH. CLEARNET regarding CMS shall be notified by the Users to LCH.CLEARNET by completing the appropriate Request Form available from LCH.CLEARNET.

15-35.3 ANNEX 2: Collateral Data to be visualised via CMS

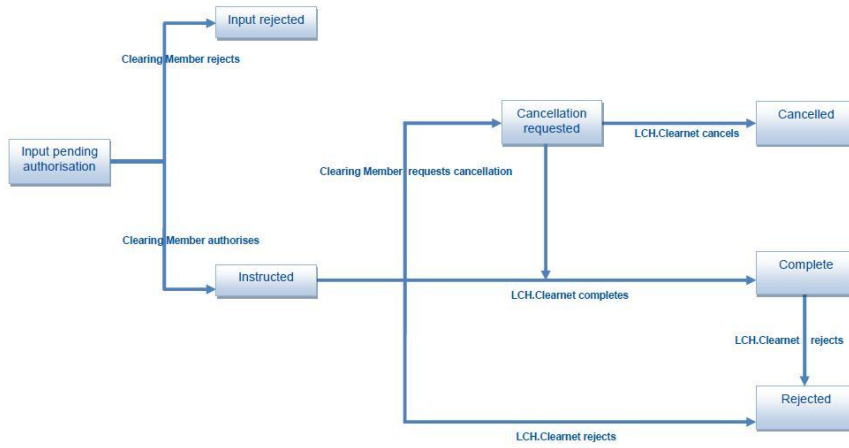
Collateral Type	Balance	Instructions
Cash	By market / sub-account	By mnemonic
Securities	By market / sub-account	By market / sub-account

- Mis en forme : Police :Non Gras
- Mis en forme : Titre 1, Retrait : Gauche : 1,01 cm, Taquets de tabulation : 1,01 cm, Tabulation de liste
- Mis en forme : Retrait : Gauche : 0,63 cm
- Mis en forme : Retrait : Gauche : 1,14 cm, Taquets de tabulation : 2,41 cm, Tabulation de liste + Pas à 1,27 cm
- Mis en forme : Retrait : Gauche : 0,63 cm
- Mis en forme : Police :Arial Gras
- Mis en forme : Retrait : Gauche : 0,63 cm
- Mis en forme : Retrait : Gauche : 1,14 cm, Taquets de tabulation : 2,41 cm, Tabulation de liste + Pas à 1,27 cm
- Mis en forme : Retrait : Gauche : 0,63 cm
- Mis en forme : Retrait : Gauche : 1,14 cm, Taquets de tabulation : 2,41 cm, Tabulation de liste + Pas à 1,27 cm
- Mis en forme : Retrait : Gauche : 0,63 cm
- Mis en forme : Retrait : Gauche : 1,14 cm, Taquets de tabulation : 2,41 cm, Tabulation de liste + Pas à 1,27 cm
- Mis en forme : Retrait : Gauche : 0,63 cm
- Mis en forme
- Mis en forme : Retrait : Gauche : 0,63 cm
- Mis en forme
- Mis en forme : Retrait : Gauche : 0,63 cm
- Mis en forme
- Mis en forme : Retrait : Gauche : 0,63 cm
- Mis en forme
- Mis en forme : Retrait : Gauche : 2,03 cm
- Mis en forme : Retrait : Gauche : 0,63 cm
- Mis en forme : Retrait : Gauche : 0,63 cm

Appendix 3

45.45.4 ANNEX 3: Collateral Instructions workflow

Workflow for security and cash instructions:



Mis en forme : Retrait : Gauche : 0,63 cm, Taquets de tabulation : 1,65 cm, Tabulation de liste + Pas à 1,02 cm

Mis en forme : Retrait : Gauche : 2,03 cm

Mis en forme : Retrait : Gauche : 0,63 cm

46.6 APPENDIX 6: DESCRIPTION OF THE CDS CLEAR PORTFOLIO MARGIN CALCULATION TOOL

46.16.1 GENERAL PRINCIPLES

46.1.46.1.1 The Portfolio Margin Calculation (PMC) tool sits with the LCH.Clearnet Portal (more information is provided in Appendix 11). Access to the Portal is provided by LCH.CLEARNET to [Users of LCH.Clearnet](#) CDSClear [Userservice](#) over secured Internet.

46.1.26.1.2 The Internet access to the PMC tool is managed via the Portal Access process. The access to PMC tool requires a specific User request.

46.1.36.1.3 The Users shall strictly comply with the terms of use of the Portal security policy, detailed in Schedule 1 of this Agreement and the associated Documentation.

46.1.46.1.4 Via the PMC tool, LCH.CLEARNET provides the Users with margin calculation results as set out in section 6.3 Annex 2 "CDSClear Clearing Data to be accessed via LCH.Clearnet Portal".

46.1.56.1.5 Any anomaly encountered regarding the proper use of the PMC tool must be raised to LCH.CLEARNET Customer Technical Helpdesk (CTH) in compliance with the terms set out in Schedule 3 of this Agreement.

46.1.66.1.6 Any changes requested by the Users from LCH.CLEARNET regarding the PMC tool shall be notified by the Users to LCH.CLEARNET by contacting the appropriate Super User, who would then complete the appropriate Request Form available from LCH.CLEARNET.

46.1.76.1.7 There are no costs regarding the provision of this Service.

46.26.2 MANAGING PRINCIPLES

The CDSClear Portfolio Margin Calculator (PMC) allows Users of LCH.~~Clearnet's~~Clearnet CDSClear service to compute the margin requirements for a portfolio of CDS Indices and Single Names. The main capabilities are:

- Pre-trade estimation (for speed)
- Post-trade reconciliation (for accuracy)

Overnight all products are unit-priced using scenario data from the most recent end-of-day production margin run. Intraday this is used to allow PMC to calculate the margins for the portfolio quickly.

The portfolio selected in the PMC can be any of the following:

- the existing portfolio containing the current stock of trades;
- a synthetic portfolio containing new trades;
- a combination of current and new trades

The PMC allows new trades to be uploaded from a CSV file and to be entered manually.

The following browsers are supported:

- IE 7, 8, 9

Mis en forme : Retrait : Gauche : 0,63 cm, Taquets de tabulation : 1,65 cm, Tabulation de liste + Pas à 0,76 cm

Mis en forme : Retrait : Gauche : 0,63 cm

Mis en forme : Retrait : Gauche : 0,63 cm, Taquets de tabulation : 1,65 cm, Tabulation de liste + Pas à 1,02 cm

Mis en forme : Retrait : Gauche : 0,63 cm

Mis en forme : Retrait : Gauche : 1,14 cm, Taquets de tabulation : 2,41 cm, Tabulation de liste + Pas à 1,27 cm

Mis en forme : Retrait : Gauche : 1,9 cm

Mis en forme : Retrait : Gauche : 1,14 cm, Taquets de tabulation : 2,41 cm, Tabulation de liste + Pas à 1,27 cm

Mis en forme : Retrait : Gauche : 0,63 cm

Mis en forme : Retrait : Gauche : 1,14 cm, Taquets de tabulation : 2,41 cm, Tabulation de liste + Pas à 1,27 cm

Mis en forme : Retrait : Gauche : 1,14 cm

Mis en forme

Mis en forme : Retrait : Gauche : 1,14 cm

Mis en forme

Mis en forme : Retrait : Gauche : 1,14 cm

Mis en forme

Mis en forme : Retrait : Gauche : 0,63 cm

Mis en forme

Mis en forme : Retrait : Gauche : 0,63 cm

Mis en forme : Justifié, Retrait : Gauche : 0,63 cm

Mis en forme

Mis en forme : Justifié, Retrait : Gauche : 0,63 cm

Mis en forme : Retrait : Gauche : 0,63 cm

Mis en forme

Appendix 3

- Firefox 19
- Chrome 15, 25
- Safari 5.1.7



Mis en forme : Retrait : Gauche :
0,63 cm

47.7 APPENDIX 7: DESCRIPTION OF THE CDSCLEAR REPORTING APPLICATION

47.47.1 GENERAL PRINCIPLES

47.4.17.1.1 The CDSClear Reporting application is a User Interface which allows Users of LCH.Clearnet CDSClear service to gain access to a full suite of downloadable report files.

47.4.27.1.2 Users have the possibility to choose the family, the format and the date of reports they are interested in as set out in section 6.3 Annex 2 "CDSClear Clearing Data to be accessed via LCH.Clearnet Portal".

47.4.37.1.3 The CDSClear Reporting application does not allow Users to automate the report and therefore is not fit for FTP usage.

47.27.2 MANAGING PRINCIPLES

47.2.47.2.1 The CDSClear Reporting application sits with the LCH.Clearnet Portal (more information in Appendix 11). Access to the LCH.Clearnet Portal is provided by LCH.CLEARNET to Users of LCH.Clearnet CDSClear Userservice over secured Internet.

47.2.27.2.2 The Internet access to the CDSClear Reporting application is managed via the LCH.Clearnet Portal Access process. The access to the CDSClear Reporting application requires a specific User request.

47.2.37.2.3 The Users shall strictly comply with the terms of use of the LCH.Clearnet Portal security policy, detailed in Schedule 1 of this Agreement and the associated Documentation.

47.2.47.2.4 Via the CDSClear Reporting application, LCH.CLEARNET provides the CDSClear Users of LCH.Clearnet CDSClear service with the suite of report files (Product, Trades, Risks, Margin & Collateral and Event report families) as set out in section 6.3 Annex 2 "CDSClear Clearing Data to be accessed via LCH.Clearnet Portal".

47.2.57.2.5 Any anomaly encountered regarding the proper use of the CDSClear Reporting application must be raised to LCH.CLEARNET Customer Technical Helpdesk (CTH) in compliance with the terms set out in Schedule 3 of this Agreement.

47.2.67.2.6 Any changes requested by the Users to LCH.CLEARNET regarding the CDSClear Reporting application shall be notified by the Users to LCH.CLEARNET by contacting the appropriate Super User, who shall then complete the appropriate Request Form available from LCH.CLEARNET.

47.2.77.2.7 There are no costs regarding the provision of this Service.

Mis en forme : Justifié, Retrait : Gauche : 0,89 cm, Taquets de tabulation : 1,65 cm, Tabulation de liste + Pas à 0,76 cm

Mis en forme : Retrait : Gauche : 0,63 cm

Mis en forme : Retrait : Gauche : 0,63 cm, Taquets de tabulation : 1,65 cm, Tabulation de liste + Pas à 1,02 cm

Mis en forme : Retrait : Gauche : 0,63 cm

Mis en forme : Retrait : Gauche : 1,14 cm, Taquets de tabulation : 2,41 cm, Tabulation de liste + Pas à 1,27 cm

Mis en forme : Retrait : Gauche : 0,63 cm

Mis en forme : Retrait : Gauche : 1,14 cm, Taquets de tabulation : 2,41 cm, Tabulation de liste + Pas à 1,27 cm

Mis en forme : Retrait : Gauche : 1,14 cm

Mis en forme : Retrait : Gauche : 1,14 cm, Taquets de tabulation : 2,41 cm, Tabulation de liste + Pas à 1,27 cm

Mis en forme : Retrait : Gauche : 0,63 cm

Mis en forme : Retrait : Gauche : 0,63 cm, Taquets de tabulation : 1,65 cm, Tabulation de liste + Pas à 1,02 cm

Mis en forme : Retrait : Gauche : 0,63 cm

Mis en forme

Mis en forme

Mis en forme

Mis en forme : Anglais (Royaume-Uni)

Mis en forme

Mis en forme

Mis en forme

Mis en forme

Mis en forme

Mis en forme

Mis en forme : Anglais (Royaume-Uni)

Mis en forme

Mis en forme

Mis en forme : Anglais (Royaume-Uni)

Mis en forme

Mis en forme

Mis en forme

Mis en forme

Appendix 3

47.37.3 ANNEX 2: CDSClear Clearing data to be accessed via LCH.Clearnet Portal

CDSCLEAR FILES	PRODUCTION	TEST
REPORTING		
Product Management reports	☒	☒
Trade Management reports	☒	☒
Risk Management reports	☒	☒
Collateral & Margin Management reports	☒	☒
Event Management reports	☒	☒
Trade Management		
Bilateral Trades Management User Interface	☒	☒
Cleared Trades Management User Interface	☒	☒
Extract of the data in .csv format	☒	☒
Compression Management		
Automatic Compression Configuration	☒	☒
Adhoc Compression File	☒	☒
Backloading		
Weekly Backloading Clearing Eligibility Report Management	☒	☒
Portfolio Margin Calculator (PMC)		
Users of the PMC tool will gain access to their permissioned CDSClear Clearing Member trade portfolio, in order for them to run margin simulations against it.	☒	☒

Mis en forme : Retrait : Gauche : 0,63 cm, Taquets de tabulation : 1,65 cm, Tabulation de liste + Pas à 1,02 cm

Mis en forme : Retrait : Gauche : 0,63 cm

Mis en forme : Retrait : Gauche : 0,63 cm

APPENDIX 8: DESCRIPTION OF THE CDSCLEAR TRADE

MANAGEMENT APPLICATION

18.18.1 GENERAL PRINCIPLES

18.18.1.1 The CDSClear Trade Management application is a User Interface which allows Users of LCH.Clearnet CDSClear service to gain access to real time information on their trade portfolios (bilateral and cleared trades).

18.18.1.2 The CDSClear Trade Management application allows the available data to be filtered using specific criteria.

18.18.1.3 The CDSClear Trade Management application allows Users to extract data if the number of lines to be displayed on the screens is too important. The format of the extracted file is .csv format.

18.18.1.4 The Reporting application does not allow Users to automate the data and therefore is not fit for FTP usage.

18.28.2 MANAGING PRINCIPLES

18.28.2.1 The CDSClear Trade Management application sits with the LCH.Clearnet Portal (more information is available in Appendix 11). Access to the LCH.Clearnet Portal is provided by LCH.CLEARNET to Users of LCH.Clearnet CDSClear Userservice over secured Internet.

18.28.2.2 The Internet access to the CDSClear Trade Management application is managed via the Portal Access process. The access to the CDSClear Trade Management application requires a specific User request.

18.28.2.3 The Users shall strictly comply with the terms of use of the LCH.Clearnet Portal security policy, detailed in Schedule 1 of this Agreement and the associated Documentation.

18.28.2.4 Via the CDSClear Trade Management application, LCH.CLEARNET provides the CDSClear Users of LCH.Clearnet CDSClear service with real time information on their trade portfolios (bilateral and cleared trades) and the possibility to extract data through .csv file download as set out in section 6.3 Annex 2 "CDSClear Clearing Data to be accessed via LCH.Clearnet Portal".

18.28.2.5 Any anomaly encountered regarding the proper use of the CDSClear Trade Management application must be raised to LCH.CLEARNET Customer Technical Helpdesk (CTH) in compliance with the terms set out in Schedule 3 of this Agreement.

18.28.2.6 Any changes requested by the Users from LCH.CLEARNET regarding the CDSClear Trade Management application shall be notified by the Users to LCH.CLEARNET by contacting the appropriate Super User, who shall then complete the appropriate Request Form available from LCH.CLEARNET.

18.28.2.7 There are no costs regarding the provision of this Service.

- Mis en forme : Retrait : Gauche : 0,89 cm, Taquets de tabulation : 1,65 cm, Tabulation de liste + Pas à 0,76 cm
- Mis en forme : Retrait : Gauche : 0,63 cm, Taquets de tabulation : 1,65 cm, Tabulation de liste + Pas à 1,02 cm
- Mis en forme : Retrait : Gauche : 0,63 cm
- Mis en forme : Retrait : Gauche : 1,14 cm, Taquets de tabulation : 2,41 cm, Tabulation de liste + Pas à 1,27 cm
- Mis en forme : Retrait : Gauche : 0,63 cm
- Mis en forme : Retrait : Gauche : 1,14 cm, Taquets de tabulation : 2,41 cm, Tabulation de liste + Pas à 1,27 cm
- Mis en forme : Retrait : Gauche : 1,14 cm
- Mis en forme : Retrait : Gauche : 1,14 cm, Taquets de tabulation : 2,41 cm, Tabulation de liste + Pas à 1,27 cm
- Mis en forme : Retrait : Gauche : 0,63 cm
- Mis en forme : Retrait : Gauche : 1,14 cm, Taquets de tabulation : 2,41 cm, Tabulation de liste + Pas à 1,27 cm
- Mis en forme : Retrait : Gauche : 0,63 cm
- Mis en forme : Retrait : Gauche : 1,14 cm, Taquets de tabulation : 2,41 cm, Tabulation de liste + Pas à 1,02 cm
- Mis en forme : Retrait : Gauche : 1,14 cm
- Mis en forme ...
- Mis en forme ...
- Mis en forme ...
- Mis en forme : Anglais (Royaume-Uni)
- Mis en forme ...
- Mis en forme ...
- Mis en forme ...
- Mis en forme ...
- Mis en forme ...
- Mis en forme ...
- Mis en forme : Anglais (Royaume-Uni)
- Mis en forme ...
- Mis en forme ...
- Mis en forme ...

Appendix 3

48.38.3 ANNEX 2: CDSClear Clearing data to be accessed via LCH.Clearnet Portal

CDSCLEAR FILES	PRODUCTION	TEST
REPORTING		
Product Management reports	☒	☒
Trade Management reports	☒	☒
Risk Management reports	☒	☒
Collateral & Margin Management reports	☒	☒
Event Management reports	☒	☒
Trade Management		
Bilateral Trades Management User Interface	☒	☒
Cleared Trades Management User Interface	☒	☒
Extract of the data in .csv format	☒	☒
Compression Management		
Automatic Compression Configuration	☒	☒
Adhoc Compression File	☒	☒
Backloading		
Weekly Backloading Clearing Eligibility Report Management	☒	☒
Portfolio Margin Calculator (PMC)		
Users of the PMC tool will gain access to their permissioned CDSClear Clearing Member trade portfolio, in order for them to run margin simulations against it.	☒	☒

Mis en forme : Retrait : Gauche : 0,63 cm, Taquets de tabulation : 1,65 cm, Tabulation de liste + Pas à 1,02 cm

Mis en forme : Retrait : Gauche : 0,63 cm

Mis en forme : Retrait : Gauche : 0,63 cm

199 APPENDIX 9: DESCRIPTION OF THE CDSCLEAR BACKLOADING

APPLICATION

19.19.1 GENERAL PRINCIPLES

19.1.19.1.1 The CDSClear Backloading application is a User Interface which allows Users of LCH.Clearnet CDSClear service to have the ability to select and upload trades for clearing for the Weekly Backloading cycle.

19.1.29.1.2 To proceed with the above described process, Users need to upload a .csv file named Result Clearing Eligibility Report.

19.1.39.1.3 The CDSClear Reporting application does not allow Users to automate the data and therefore is not fit for FTP usage.

19.29.2 MANAGING PRINCIPLES

19.2.19.2.1 The CDSClear Backloading application sits with the LCH.Clearnet Portal (more information is available in Appendix 11). Access to the Portal is provided by LCH.CLEARNET to Users of LCH.Clearnet CDSClear Userservice over secured Internet.

19.2.29.2.2 The Internet access to the CDSClear Backloading application is managed via the LCH.Clearnet Portal Access process. The access to the CDSClear Backloading application requires a specific User request.

19.2.39.2.3 The Users shall strictly comply with the terms of use of the LCH.Clearnet Portal security policy, detailed in Schedule 1 of this Agreement and the associated Documentation.

19.2.49.2.4 Via the CDSClear Backloading application, LCH.CLEARNET provides the CDSClear Users of LCH.Clearnet CDSClear service with the ability to select and upload trades for clearing via the weekly backloading cycle using the CER Result File as set out in section 6.3 Annex 2 "CDSClear Clearing Data to be accessed via LCH.Clearnet Portal".

19.2.59.2.5 Any anomaly encountered regarding the proper use of the Backloading application must be raised to LCH.CLEARNET Customer Technical Helpdesk (CTH) in compliance with the terms set out in Schedule 3 of this Agreement.

19.2.69.2.6 Any changes requested by the Users from LCH.CLEARNET regarding the CDSClear Backloading application shall be notified by the Users to LCH.CLEARNET by contacting the appropriate Super User, who shall then complete the appropriate Request Form available from LCH.CLEARNET.

19.2.79.2.7 There are no costs regarding the provision of this Service.

- Mis en forme : Retrait : Gauche : 0,89 cm, Taquets de tabulation : 1,65 cm, Tabulation de liste + Pas à 0,76 cm
- Mis en forme : Retrait : Gauche : 0,63 cm, Taquets de tabulation : 1,65 cm, Tabulation de liste + Pas à 1,02 cm
- Mis en forme : Retrait : Gauche : 0,63 cm
- Mis en forme : Retrait : Gauche : 1,14 cm, Taquets de tabulation : 2,41 cm, Tabulation de liste + Pas à 1,27 cm
- Mis en forme : Retrait : Gauche : 1,14 cm
- Mis en forme : Retrait : Gauche : 1,14 cm, Taquets de tabulation : 2,41 cm, Tabulation de liste + Pas à 1,27 cm
- Mis en forme : Retrait : Gauche : 0,63 cm
- Mis en forme : Retrait : Gauche : 1,14 cm, Taquets de tabulation : 2,41 cm, Tabulation de liste + Pas à 1,27 cm
- Mis en forme : Retrait : Gauche : 0,63 cm
- Mis en forme : Retrait : Gauche : 0,63 cm, Taquets de tabulation : 1,65 cm, Tabulation de liste + Pas à 1,02 cm
- Mis en forme : Retrait : Gauche : 1,14 cm
- Mis en forme ...
- Mis en forme : Retrait : Gauche : 1,9 cm
- Mis en forme ...
- Mis en forme : Anglais (Royaume-Uni)
- Mis en forme : Retrait : Gauche : 0,63 cm
- Mis en forme ...
- Mis en forme : Retrait : Gauche : 1,14 cm
- Mis en forme ...
- Mis en forme : Retrait : Gauche : 1,14 cm
- Mis en forme ...
- Mis en forme : Retrait : Gauche : 1,14 cm
- Mis en forme ...
- Mis en forme : Retrait : Gauche : 0,63 cm

Appendix 3

49.39.3 ANNEX 2: CDSClear Clearing data to be accessed via LCH.Clearnet Portal

CDSCLEAR FILES	PRODUCTION	TEST
REPORTING		
Product Management reports	☒	☒
Trade Management reports	☒	☒
Risk Management reports	☒	☒
Collateral & Margin Management reports	☒	☒
Event Management reports	☒	☒
Trade Management		
Bilateral Trades Management User Interface	☒	☒
Cleared Trades Management User Interface	☒	☒
Extract of the data in .csv format	☒	☒
Compression Management		
Automatic Compression Configuration	☒	☒
Adhoc Compression File	☒	☒
Backloading		
Weekly Backloading Clearing Eligibility Report Management	☒	☒
Portfolio Margin Calculator (PMC)		
Users of the PMC tool will gain access to their permissioned CDSClear Clearing Member trade portfolio, in order for them to run margin simulations against it.	☒	☒

Mis en forme : Retrait : Gauche : 0,63 cm, Taquets de tabulation : 1,65 cm, Tabulation de liste + Pas à 1,02 cm

Mis en forme : Retrait : Gauche : 0,63 cm

Mis en forme : Retrait : Gauche : 0,63 cm

2010 APPENDIX 10: DESCRIPTION OF THE CDS CLEAR COMPRESSION APPLICATION

20.110.1 GENERAL PRINCIPLES

20.1.110.1.1 The CDS Clear Compression application is a User Interface which allows Users of LCH.Clearnet CDS Clear service to configure their compression settings on their portfolios. Users have several options of compression frequency (daily or weekly) and the possibility to compress their trades at deskID level.

20.1.210.1.2 The CDS Clear Compression application also allows Users to upload a .csv file for ad-hoc compression.

20.1.310.1.3 The Reporting CDS Clear Compression application does not allow Users to automate the data and therefore is not fit for FTP usage.

20.210.2 MANAGING PRINCIPLES

20.2.110.2.1 The Backloading CDS Clear Compression application sits with the LCH.Clearnet Portal (more information in Appendix 11). Access to the LCH.Clearnet Portal is provided by LCH.CLEARNET to CDS Clear Users of LCH.Clearnet CDS Clear service over secured Internet.

20.2.210.2.2 The Internet access to the Backloading CDS Clear Compression application is managed via the LCH.Clearnet Portal Access process. The access to the Backloading application CDS Clear Compression application requires a specific User request.

20.2.310.2.3 The Users shall strictly comply with the terms of use of the LCH.Clearnet Portal security policy, detailed in Schedule 1 of this Agreement and the associated Documentation.

20.2.410.2.4 Via the CDS Clear Compression application, LCH.CLEARNET provides the CDS Clear Users of LCH.Clearnet CDS Clear service with the ability to configure their compression settings and to upload ad-hoc compression files as set out in section 6.3 Annex 2 "CDS Clear Clearing Data to be accessed via LCH.Clearnet Portal".

20.2.510.2.5 Any anomaly encountered regarding the proper use of the Trade Management application CDS Clear Compression application must be raised to LCH.CLEARNET Customer Technical Helpdesk (CTH) in compliance with the terms set out in Schedule 3 of this Agreement.

20.2.610.2.6 Any changes requested by the Users from LCH.CLEARNET regarding the Trade Management CDS Clear Compression application shall be notified by the Users to LCH.CLEARNET by contacting the appropriate Super User, who shall then complete the appropriate Request Form available from LCH.CLEARNET.

20.2.710.2.7 There are no costs regarding the provision of this Service.

- Mis en forme : Retrait : Gauche : 0,89 cm, Taquets de tabulation : 1,65 cm, Tabulation de liste + Pas à 0,76 cm
- Mis en forme : Retrait : Gauche : 0,63 cm, Taquets de tabulation : 1,65 cm, Tabulation de liste + Pas à 1,02 cm
- Mis en forme : Retrait : Gauche : 0,63 cm
- Mis en forme : Retrait : Gauche : 0,63 cm
- Mis en forme : Retrait : Gauche : 1,14 cm, Taquets de tabulation : 2,41 cm, Tabulation de liste + Pas à 1,27 cm
- Mis en forme : Retrait : Gauche : 1,14 cm
- Mis en forme : Retrait : Gauche : 1,14 cm, Taquets de tabulation : 2,41 cm, Tabulation de liste + Pas à 1,27 cm
- Mis en forme : Retrait : Gauche : 0,63 cm
- Mis en forme : Retrait : Gauche : 0,63 cm, Taquets de tabulation : 1,65 cm, Tabulation de liste + Pas à 1,02 cm
- Mis en forme : Retrait : Gauche : 1,14 cm
- Mis en forme : Retrait : Gauche : 1,14 cm, Taquets de tabulation : 2,41 cm, Tabulation de liste + Pas à 1,27 cm
- Mis en forme : Retrait : Gauche : 1,9 cm
- Mis en forme : Retrait : Gauche : 1,14 cm, Taquets de tabulation : 2,41 cm, Tabulation de liste + Pas à 1,27 cm
- Mis en forme : Retrait : Gauche : 0,63 cm
- Mis en forme ...
- Mis en forme : Retrait : Gauche : 1,14 cm
- Mis en forme ...
- Mis en forme : Retrait : Gauche : 1,14 cm
- Mis en forme ...
- Mis en forme : Retrait : Gauche : 1,14 cm
- Mis en forme ...
- Mis en forme : Retrait : Gauche : 1,14 cm
- Mis en forme ...
- Mis en forme : Retrait : Gauche : 0,63 cm

Appendix 3

20.310.3 ANNEX 2: CDSClear Clearing data to be accessed via LCH.Clearnet Portal

CDS CLEAR FILES	PRODUCTION	TEST
REPORTING		
Product Management reports	☒	☒
Trade Management reports	☒	☒
Risk Management reports	☒	☒
Collateral & Margin Management reports	☒	☒
Event Management reports	☒	☒
Trade Management		
Bilateral Trades Management User Interface	☒	☒
Cleared Trades Management User Interface	☒	☒
Extract of the data in .csv format	☒	☒
Compression Management		
Automatic Compression Configuration	☒	☒
Adhoc Compression File	☒	☒
Backloading		
Weekly Backloading Clearing Eligibility Report Management	☒	☒
Portfolio Margin Calculator (PMC)		
Users of the PMC tool will gain access to their permissioned CDSClear Clearing Member trade portfolio, in order for them to run margin simulations against it.	☒	☒

Mis en forme : Retrait : Gauche : 0,63 cm, Taquets de tabulation : 1,65 cm, Tabulation de liste + Pas à 1,02 cm

Mis en forme : Retrait : Gauche : 0,63 cm

Mis en forme : Retrait : Gauche : 0 cm

Mis en forme : Retrait : Gauche : 0,63 cm

2411 APPENDIX 11: DESCRIPTION OF THE LCH.CLEARNET PORTAL

24.111.1 GENERAL PRINCIPLES

24.1.111.1.1 Portal is a single sign-on solution for various LCH.CLEARNET applications.

24.1.211.1.2 Once logged onto [the LCH.Clearnet](#) Portal, Users will have access to a set of parameterised applications without logging in again.

24.1.311.1.3 The available set of applications is defined at User level - based on permissions applied to that user.

24.211.2 MANAGING PRINCIPLES

The managing principles for [the LCH.Clearnet](#) Portal access are detailed hereafter:

24.2.411.2.1 In order to be granted access to [the LCH.Clearnet](#) Portal, the Users shall request LCH.CLEARNET to provide the appropriate Request Form. Once this form is duly completed and signed by the Users, LCH.CLEARNET takes the necessary actions to give the Users [LCH.Clearnet](#) Portal access in coordination with Portal team.

24.2.211.2.2 To be granted access to the [LCH.Clearnet](#) Portal is typically done via the Super User facility, excluding CMS ONLY which is done via an online request form directly available to members upon acceding to the [LCH.Clearnet](#) Portal Link.

24.2.311.2.3 For all applications (except CMS), users gain access to portal via the Super User facility, which is a delegated responsibility given to 1 or 2 people within that User institution for each line of business and possibly for each application.

24.2.411.2.4 In order for a Clearing Member to have access as a Super User, such Clearing Member needs to request the appropriate form from LCH.Clearnet, have it signed by an authorised signatory for that bank and then return it to LCH.Clearnet. Once returned, LCH.Clearnet creates this User as a Super User with delegated authority to create access for others within their own institution.

24.2.511.2.5 The Users shall comply with the instructions provided by LCH.CLEARNET in the relevant documentation in order to activate their login.

24.2.611.2.6 The following events shall be immediately communicated to LCH.CLEARNET in order to update Users' accesses:

- 7) leavers (eg. resignation, dismissal, any cause of leaving)
- 8) change of function

24.2.711.2.7 Inactivate accounts: note that [the LCH.Clearnet](#) Portal Security policy states that all accounts that are not used for a 3 month period will automatically become inactive. In order for the user to start using the account again, they will need to contact LCH.Clearnet for re-activation. If the period of inactivity continues for up to 6 months, accounts will then be automatically deleted. This is a measure that will be taken to as strictly as possible, for security to mitigate the possibility of any breaches.

Mis en forme : Retrait : Gauche : 0,89 cm, Taquets de tabulation : 1,65 cm, Tabulation de liste + Pas à 0,76 cm

Mis en forme : Retrait : Gauche : 2,03 cm

Mis en forme : Retrait : Gauche : 0,63 cm, Taquets de tabulation : 1,65 cm, Tabulation de liste + Pas à 1,02 cm

Mis en forme : Retrait : Gauche : 0,63 cm

Mis en forme : Retrait : Gauche : 1,14 cm

Mis en forme : Retrait : Gauche : 1,14 cm, Taquets de tabulation : 2,41 cm, Tabulation de liste + Pas à 1,27 cm

Mis en forme : Retrait : Gauche : 1,14 cm

Mis en forme : Retrait : Gauche : 1,14 cm, Taquets de tabulation : 2,41 cm, Tabulation de liste + Pas à 1,27 cm

Mis en forme : Retrait : Gauche : 0,63 cm

Mis en forme : Retrait : Gauche : 0,63 cm, Taquets de tabulation : 1,65 cm, Tabulation de liste + Pas à 1,02 cm

Mis en forme : Retrait : Gauche : 0,63 cm

Mis en forme : Retrait : Gauche : 1,14 cm, Taquets de tabulation : 2,41 cm, Tabulation de liste + Pas à 1,27 cm

Mis en forme : Retrait : Gauche : 0,63 cm

Mis en forme

Mis en forme : Retrait : Gauche : 1,14 cm

Mis en forme

Mis en forme : Retrait : Gauche : 0,63 cm

Mis en forme

Mis en forme

Mis en forme : Retrait : Gauche : 0,63 cm

Mis en forme

Mis en forme

Mis en forme : Retrait : Gauche : 0,63 cm

Mis en forme

22.12 APPENDIX 12: DESCRIPTION OF WEB EGCP

22.12.1 GENERAL PRINCIPLES

22.1.412.1.1 Web EGCP is an electronic Clearing Access Solution provided by LCH.CLEARNET for its Users trading on the €GCPlus market cleared by LCH.CLEARNET.

22.1.212.1.2 Web EGCP grants Users secured access to view and download the data set out in Annex 2 of this Appendix.

22.212.2 MANAGING PRINCIPLES

22.2.412.2.1 The access to the Web EGCP is delivered by LCH.CLEARNET, after the Users have duly filled in and signed the LCH.CLEARNET adequate Request Form

22.2.212.2.2 This Request Form shall be duly completed and signed by the Users and sent by registered letter to the appropriate LCH.CLEARNET interlocutor as set out on the Request Form.

22.2.312.2.3 The access to the Web EGCP is managed via a Secure Access Card. The Users shall strictly comply with the terms of use of the Secure Access Card as those terms are set out in clause 2.2 of this appendix, security measures set out in Schedule 1 of this Agreement and the associated Documentation.

22.2.412.2.4 The access to the Web EGCP can also be managed via the implementation of a push or pull solution (hereafter "Push/Pull Solution"), on request of the Users. Either the Users connect to the Appropriate Network and pull the Web EGCP files onto its information system; or LCH.CLEARNET pushes the Web EGCP files on to the Clearing Member's information system via internet.

22.2.512.2.5 LCH.CLEARNET offers to its Users two technical solutions to get access to the Push / Pull Solution:
 - either a PGP solution (encrypted), or
 - a public solution (non encrypted solution).

The choice between these two solutions remains under the sole responsibility of the Users. Each User declares that he has the accurate knowledge to assess the consequences each solution may generate. In this context, the Users acknowledge and agree that LCH.CLEARNET would not suffer any liability regarding the consequences associated with the choice described above and notably where the Users opt for the public solution.

Further to clause 13 of the Access Agreement and notwithstanding anything to the contrary, in no circumstances whatsoever will LCH.CLEARNET be liable for any direct or indirect loss or damage including without limitation, loss of data or loss of profits arising out of, or in connection with, the use of the public solution. Any reliance the User places on information received through the public solution is therefore at its own risk.

- Mis en forme : Retrait : Gauche : 0,89 cm, Taquets de tabulation : 1,65 cm, Tabulation de liste + Pas à 0,76 cm
- Mis en forme : Retrait : Gauche : 0,63 cm
- Mis en forme : Retrait : Gauche : 0,63 cm, Taquets de tabulation : 1,65 cm, Tabulation de liste + Pas à 1,02 cm
- Mis en forme : Retrait : Gauche : 0,63 cm
- Mis en forme : Retrait : Gauche : 1,14 cm, Taquets de tabulation : 2,41 cm, Tabulation de liste + Pas à 1,27 cm
- Mis en forme : Retrait : Gauche : 0,63 cm
- Mis en forme : Retrait : Gauche : 1,14 cm, Taquets de tabulation : 2,41 cm, Tabulation de liste + Pas à 1,27 cm
- Mis en forme : Retrait : Gauche : 0,63 cm
- Mis en forme : Retrait : Gauche : 0,63 cm, Taquets de tabulation : 1,65 cm, Tabulation de liste + Pas à 1,02 cm
- Mis en forme : Retrait : Gauche : 0,63 cm
- Mis en forme : Retrait : Gauche : 1,14 cm, Taquets de tabulation : 2,41 cm, Tabulation de liste + Pas à 1,27 cm
- Mis en forme : Retrait : Gauche : 0,63 cm
- Mis en forme : Retrait : Gauche : 1,14 cm, Taquets de tabulation : 2,41 cm, Tabulation de liste + Pas à 1,27 cm
- Mis en forme : Retrait : Gauche : 0,63 cm
- Mis en forme
- Mis en forme : Retrait : Gauche : 0,63 cm
- Mis en forme
- Mis en forme : Retrait : Gauche : 1,89 cm
- Mis en forme
- Mis en forme
- Mis en forme : Retrait : Gauche : 1,9 cm
- Mis en forme : Retrait : Gauche : 0,63 cm
- Mis en forme : Retrait : Gauche : 1,88 cm
- Mis en forme : Retrait : Gauche : 0,63 cm

Appendix 3

4.1-2-12.2.6 Via the Web EGCP, LCH.CLEARNET provides the Users with the appropriate clearing data (files) as set out in Annex 2 "Clearing Data to be accessed via Web EGCP".

22-2-612.2.7 The following events shall be immediately communicated to LCH.CLEARNET Account Managers by the Users Web €GCPlus administrator (MSA) in order to update the Users' accesses to the Web EGCP :

- 10) leavers (eg.resignation, dismissal, any cause of leaving);
- 11) change of function;
- 12) re-assignment of Secure Access Card;
- 13) loss of Secure Access Card or activation of Secure Access Card following the synchronisation or loss of PIN code.

22-2-712.2.8 Any Anomaly encountered regarding the proper use of the Web EGCP must be raised to LCH.CLEARNET Customer Technical Helpdesk (CTH) in compliance with the terms set out in Schedule 3 of this Agreement.

22-2-812.2.9 Any Changes required by the Users to LCH.CLEARNET regarding the Web EGCP shall be notified by the Users to LCH.CLEARNET by filling in the adequate Request Form "Web EGCP Change Request Form" attached in Annex 1 of this Appendix.

22-312.3 ANNEX 1 : Secure Access Card Management

22-412.4 General Principles

22-4-412.4.1 A token, hereafter referred as "Secure Access Card" aims at delivering to the Users a secured electronic access to the Web EGCP Clearing Access Solutions.

22-4-212.4.2 The "Secure Access Card" is automatically provided by LCH.CLEARNET as soon as the Users request to be granted access to Web EGCP.

22-512.5 Managing principles

22-5-412.5.1 The Secure Access Card enables access to the Web EGCP production interface.

22-5-212.5.2 The Secure Access Card is provided to the Users when they issue a request to LCH.CLEARNET CTH in order to be granted access to the Web EGCP platform via Internet.

22-5-312.5.3 The Users may also wish to be granted access to the Web EGCP files via a "push or pull" solution, which consists in granting access to EGCP files via FTP network.

22-5-412.5.4 The Users shall specify in the Request Form which Clearing Access Solution they require and also give details on the Users:

- 14) Names
- 15) Address (site, country)
- 16) E-mail address
- 17) Phone number
- 18) Fax number

22-5-512.5.5 LCH.CLEARNET CTH is in charge of providing the Users with the following relevant and sufficient information to have access to the Web EGCP production interface:

- 19) Pin code
- 20) Password

Mis en forme : Retrait : Gauche : 0,63 cm, Suspendu : 1,25 cm, Hiérarchisation + Niveau : 3 + Style de numérotation : 1, 2, 3, ... + Commencer à : 1 + Alignement : Gauche + Alignement : 0 cm + Tabulation après : 1,27 cm + Retrait : 1,27 cm, Taquets de tabulation : Pas à 1,27 cm

Mis en forme : Retrait : Gauche : 0,63 cm

Mis en forme : Retrait : Gauche : 1,14 cm, Taquets de tabulation : 2,41 cm, Tabulation de liste + Pas à 1,27 cm

Mis en forme : Retrait : Gauche : 1,9 cm, Hiérarchisation + Niveau : 1 + Style de numérotation : Puce + Alignement : 1,27 cm + Tabulation après : 1,9 cm + Retrait : 1,9 cm, Taquets de tabulation : 2,54 cm, Tabulation de liste + Pas à 1,9 cm

Mis en forme : Retrait : Gauche : 0,63 cm

Mis en forme : Retrait : Gauche : 1,14 cm, Taquets de tabulation : 2,41 cm, Tabulation de liste + Pas à 1,27 cm

Mis en forme : Retrait : Gauche : 0,63 cm

Mis en forme ...

Mis en forme ...

Mis en forme ...

Mis en forme ...

Mis en forme ...

Mis en forme ...

Mis en forme ...

Mis en forme ...

Mis en forme ...

Mis en forme ...

Mis en forme ...

Mis en forme ...

Mis en forme ...

Mis en forme ...

Mis en forme ...

Mis en forme ...

Mis en forme ...

Mis en forme ...

Mis en forme ...

Mis en forme ...

Mis en forme ...

Mis en forme ...

Appendix 3

24) Instructions for use.

22-5-612.5.6 The Users shall comply with the instructions provided by LCH.CLEARNET in the relevant documentation.

22-5-712.5.7 Secure Access Cards operate for a limited period of time (3 years in average). It will therefore be replaced at LCH.CLEARNET initiative in due course.

22-5-812.5.8 Any Anomaly or problem encountered by the Users regarding the Web EGCP access via the Secure Access Card shall be raised to LCH.CLEARNET CTH.

22-5-912.5.9 The costs regarding the Web EGCP Clearing Access Solution are the ones set out in the effective LCH.CLEARNET fee grid.

22-612.6 ANNEX 2: Clearing data to be accessed via Web EGCP

22-6-412.6.1 The Web EGCP solution gives access to the Users to the following data:

- v. in real-time :
 - 4. daily operations (validated and refused) recorded by LCH.CLEARNET during the day
- vi. at the end of day :
 - recap of all trades registered during the day
 - report on Net Position Exposure calculation (also updated once intra day)
- vii. 08.00 next morning (Paris time) :
 - 4. financial report (also updated for intraday position)
- viii. monthly :
 - 4. invoicing details

22-6-212.6.2 Hereunder is the list of files provided via the Web EGCP Clearing Access Solution:

Report Name	Technical Name	Production Description	Test Description
Real time trade report (for EGCPPlus)	CBPTRAD	xxxPRYYYYMMDDCBPTRAD_HHMM.NET	xxxTSYYYYMMDDCBPTRAD_HHMM.N
Regularisation (for EGCPPlus)	CBPREGU	xxxPRYYYYMMDDCBPREGU.TXT	xxxTSYYYYMMDDCBPREGU.TXT
Trades of the day (for EGCPPlus)	CBPDTRD	xxxPRYYYYMMDDCBPDTRD.TXT	xxxTSYYYYMMDDCBPDTRD.TXT
Forward Repos (for EGCPPlus)	CBPFORW	xxxPRYYYYMMDDCBPFORW.TXT	xxxTSYYYYMMDDCBPFORW.TXT
Detail of Net Instructions (same day)	CBPNPE1	xxxPRYYYYMMDDCBPNPE1.TXT	xxxTSYYYYMMDDCBPNPE1.TXT
Detail of Net Instructions (tomorrow)	CBPNPE2	xxxPRYYYYMMDDCBPNPE2.TXT	xxxTSYYYYMMDDCBPNPE2.TXT
Euro Financial Statement	CBPSFEU	xxxPRYYYYMMDDCBPSFEU.TXT	xxxTSYYYYMMDDCBPSFEU.TXT
Intra-day Euro Financial Statement	CBPSFE1	xxxPRYYYYMMDDCBPSFE1.TXT	xxxTSYYYYMMDDCBPSFE1.TXT
Settlement related costs	CBPNETT	xxxPRYYYYMMDDCBPNETT.TXT	xxxTSYYYYMMDDCBPNETT.TXT

Mis en forme : Retrait : Gauche : 0,63 cm

Mis en forme : Retrait : Gauche : 1,14 cm, Taquets de tabulation : 2,41 cm, Tabulation de liste + Pas à 1,27 cm

Mis en forme : Retrait : Gauche : 0,63 cm

Mis en forme : Retrait : Gauche : 1,14 cm, Taquets de tabulation : 2,41 cm, Tabulation de liste + Pas à 1,27 cm

Mis en forme : Retrait : Gauche : 0,63 cm

Mis en forme : Retrait : Gauche : 1,14 cm, Taquets de tabulation : 2,41 cm, Tabulation de liste + Pas à 1,27 cm

Mis en forme : Retrait : Gauche : 0,63 cm

Mis en forme : Retrait : Gauche : 1,14 cm, Taquets de tabulation : 2,41 cm, Tabulation de liste + Pas à 1,27 cm

Mis en forme : Retrait : Gauche : 2,03 cm

Mis en forme : Retrait : Gauche : 0,63 cm, Taquets de tabulation : 1,65 cm, Tabulation de liste + Pas à 1,02 cm

Mis en forme : Retrait : Gauche : 0,63 cm

Mis en forme : Retrait : Gauche : 1,14 cm, Taquets de tabulation : 2,41 cm, Tabulation de liste + Pas à 1,27 cm

Mis en forme : Retrait : Gauche : 0,63 cm

Mis en forme : Retrait : Gauche : 3,17 cm, Avec puces + Niveau : 3 + Alignement : 2,54 cm + Tabulation après : 3,17 cm + Retrait : 3,17 cm, Pas de paragraphes solidaires, Taquets de tabulation : 3,81 cm, Tabulation de liste + Pas à 0 cm + 0,89 cm + 3,17 cm

Mis en forme : Retrait : Gauche : 5,08 cm

Mis en forme : Retrait : Gauche : 0,63 cm

Mis en forme : Retrait : Gauche : 3,17 cm, Avec puces + Niveau : 3 + Alignement : 2,54 cm + Tabulation après : 3,17 cm + Retrait : 3,17 cm, Pas de paragraphes solidaires, Taquets de tabulation : 3,81 cm, Tabulation de liste + Pas à 0 cm + 0,89 cm + 3,17 cm

Mis en forme : Retrait : Gauche : 0,63 cm

Mis en forme

Appendix 3

Fees amounts	CBPREPO	xxxPRYYYYMMDDCBPREPO.TXT	xxxTSYYYYMMDDCBPREPO.TXT
Intra Day Market data	CBPMKDTITD	xxxPRYYYYMMDDCBPMKDTITD.TXT	xxxTSYYYYMMDDCBPMKDTITD.TXT
Market data	CBPMKDTRTH	xxxPRYYYYMMDDCBPMKDTRTH.TXT	xxxTSYYYYMMDDCBPMKDTRTH.TXT
Intra Day Risk Report	CBPRISKITD	xxxPRYYYYMMDDCBPRISKITD.TXT	xxxTSYYYYMMDDCBPRISKITD.TXT
Risk Report	CBPRISKRTH	xxxPRYYYYMMDDCBPRISKRTH.TXT	xxxTSYYYYMMDDCBPRISKRTH.TXT

Mis en forme : Retrait : Gauche : 0,63 cm

Mis en forme : Retrait : Gauche : 1,9 cm

Mis en forme : Retrait : Gauche : 0,63 cm

13 APPENDIX 13: DESCRIPTION OF THE CDSCLEAR REPORTING SFTP SOLUTION

13.1 GENERAL PRINCIPLES

The CDSClear Reporting SFTP solution is a non-browser based, Secure FTP (File Transfer Protocol) interface used by Users of the LCH.Clearnet CDSClear service for the scripted, bulk retrieval of reports on a scheduled basis. Users connect on a frequent, automatic schedule and retrieve reports, often across multiple business line, in bulk - for later processing. This is a non-user interactive interface.

Access to the CDSClear Reporting SFTP solution is made through Internet or BT Radianz connection.

13.2 COMPOSITION OF THE CDSCLEAR REPORTING SFTP SOLUTION

The CDSClear Reporting SFTP solution supplies the Users of the LCH.Clearnet CDSClear service with a Secure FTP service by restricting accounts by IP addresses enabling the management of incoming and outgoing files flows.

The CDSClear Reporting SFTP solution handles the certification and storage of data interchanged between tUsers and LCH.CLEARNET.

13.3 MANAGING PRINCIPLES

13.3.1 The CDSClear Reporting SFTP solution has been built using the LCH.Clearnet Portal security model.

13.3.2 Whenever Users require to be given access to the CDSClear Reporting SFTP Solution, the appropriate Request Form, available from the LCH.Clearnet Portal, shall be duly completed and signed by the Users and sent by registered letter to the appropriate LCH.CLEARNET interlocutor as set out on the Request Form.

13.3.3 Any Anomaly encountered regarding the proper use of the CDSClear Reporting SFTP solution must be raised to LCH.CLEARNET Customer Technical Helpdesk (CTH) in compliance with the terms set out in Schedule 3 of this Agreement.

13.3.4 Any changes requested by the Users from LCH.CLEARNET regarding the CDSClear Reporting SFTP solution shall be notified by the Users to LCH.CLEARNET by contacting the appropriate Super User, who would then complete the appropriate Request Form available from LCH.CLEARNET.

13.3.5 There are no costs regarding the provision of this Service.

14 APPENDIX 14: DESCRIPTION OF THE CDSCLEAR REPORTING

APPLICATION PROGRAMMING INTERFACE

14.1 GENERAL PRINCIPLES

The CDSClear Reporting API solution provides a programmatic interface where Users of the LCH.Clearnet CDSClear service can use scripts to access and download individual reports.

Access to the CDSClear Reporting API solution is made through Internet.

14.2 COMPOSITION OF THE CDSCLEAR REPORTING API SOLUTION

CDSClear Reporting API solution supplies the Users with the ability to run a script in order to retrieve reports on an ad-hoc or small-scale basis – the new API interface provides a secure mechanism in which to do so.

Members need to register for a new Portal API account and password.

The CDSClear Reporting API solution handles the certification and storage of data interchanged between the Users and LCH.CLEARNET.

14.3 MANAGING PRINCIPLES

14.3.1 The CDSClear Reporting API solution has been built using the LCH.Clearnet Portal security model.

14.3.2 Whenever Users require to be given access to the CDSClear Reporting API Solution, the appropriate Request Form, available from the LCH.Clearnet Portal, shall be duly completed and signed by the Users and sent by registered letter to the appropriate LCH.CLEARNET interlocutor as set out on the Request Form.

14.3.3 Any Anomaly encountered regarding the proper use of the CDSClear Reporting API solution must be raised to LCH.CLEARNET Customer Technical Helpdesk (CTH) in compliance with the terms set out in Schedule 3 of this Agreement.

14.3.4 Any Changes required by the Users to LCH.CLEARNET regarding the CDSClear Reporting API solution shall be notified by the Users to LCH.CLEARNET by contacting the appropriate Super User, who would then complete the appropriate Request Form available from LCH.CLEARNET.

14.3.5 There are no costs regarding the provision of this Service.

15 APPENDIX 15: DESCRIPTION OF THE CDSCLEAR PORTFOLIO MARGIN

CALCULATION APPLICATION PROGRAMMING INTERFACE

15.1 GENERAL PRINCIPLES

The CDSClear PMC API provides a programmatic interface where Users of the LCH.Clearnet CDSClear service can use scripts to access and download individual margin results.

Access to the CDSClear PMC API solution is made through Internet.

15.2 COMPOSITION OF THE CDSCLEAR PMC API

CDSClear PMC API solution supplies the Users with the ability to run a script in order to calculate margin on an ad-hoc or small-scale basis – the API interface provides a secure mechanism in which to do so.

Members need to register for a new Portal API account and password.

The CDSClear PMC API solution handles the certification and storage of data interchanged between the Users and LCH.CLEARNET.

15.3 MANAGING PRINCIPLES

15.3.1 The PMC API solution has been built using the LCH.Clearnet Portal security model.

15.3.2 Whenever Users require to be given access to the CDSClear PMC API, the appropriate Request Form, available from the LCH.Clearnet Portal, shall be duly completed and signed by the Users and sent by registered letter to the appropriate LCH.CLEARNET interlocutor as set out on the Request Form.

15.3.3 Any Anomaly encountered regarding the proper use of the CDSClear PMC API must be raised to LCH.CLEARNET Customer Technical Helpdesk (CTH) in compliance with the terms set out in Schedule 3 of this Agreement.

15.3.4 Any Changes required by the Users to LCH.CLEARNET regarding the CDSClear PMC API solution shall be notified by the Users to LCH.CLEARNET by contacting the appropriate Super User, who would then complete the appropriate Request Form available from LCH.CLEARNET.

15.3.5 There are no costs regarding the provision of this Service.

Mis en forme : Police :9 pt, Gras,
Couleur de police : Bleu foncé, Anglais
(Royaume-Uni)

Mis en forme : Normal, Retrait :
Gauche : 0 cm