



LEADTEK 2023 Investor Conference

2023/12/18

Company Profile

Incorporation: 1986/10/24

IPO: 1999/6/3

Stock code: 2465

Capital: 839 million NTD

Chairman & CEO: K.S. Lu

Headquarters: Taipei, Taiwan

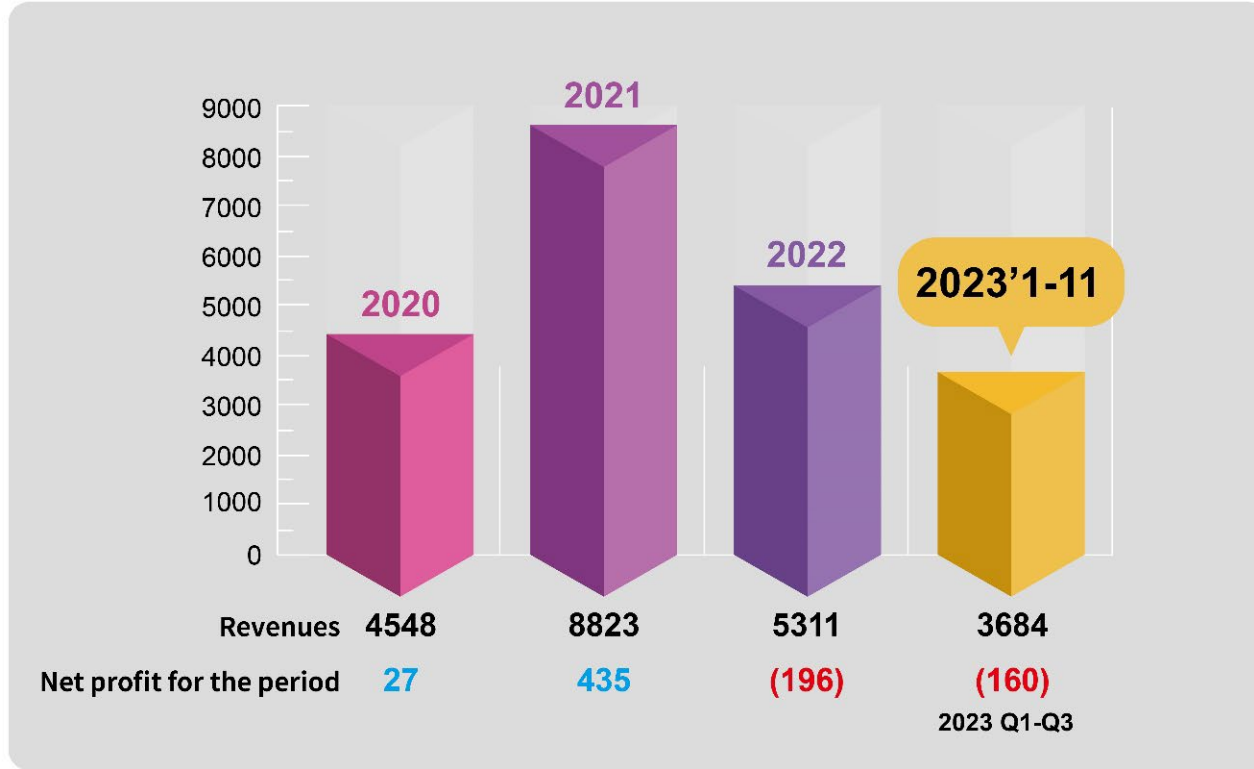
Subsidiaries: China and Japan

Number of employees: 415

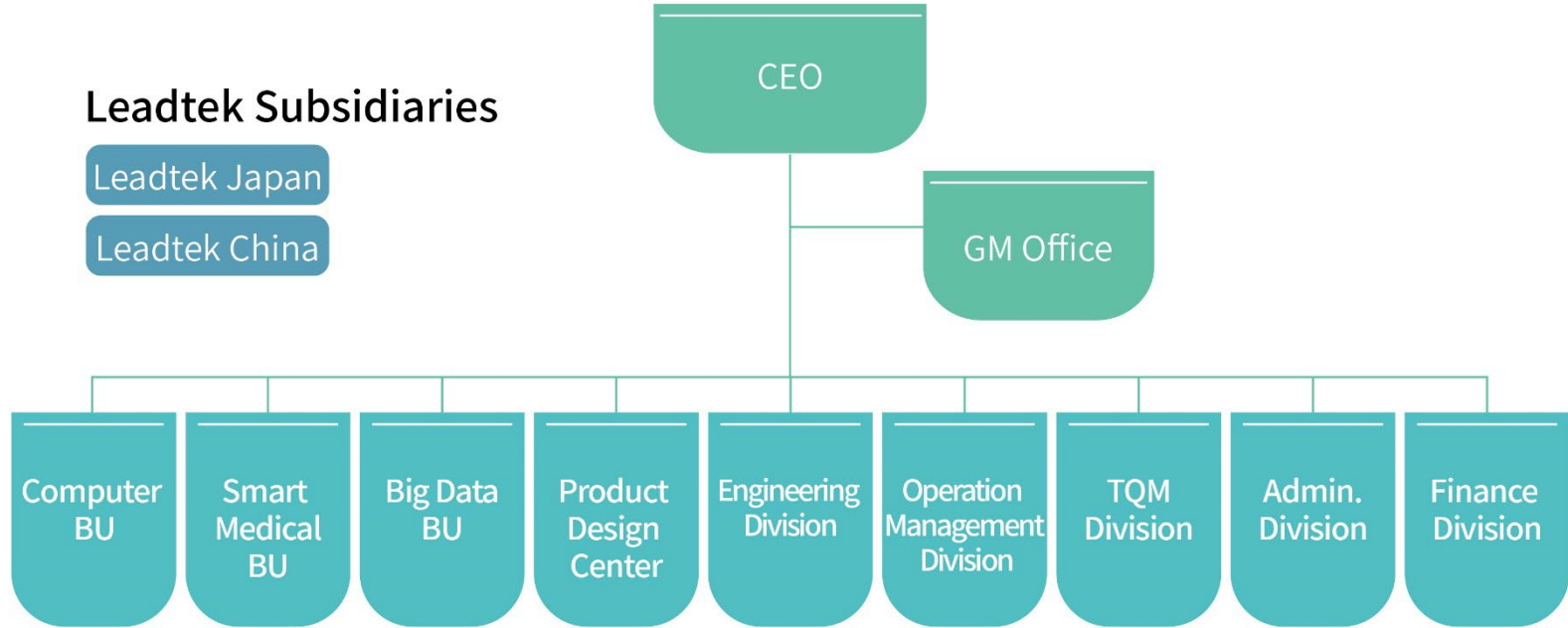


REVENUES

NTD in Million



Company Org. Chart



A leading brand of graphics cards for 37 years

A full range of consumer/workstation graphics cards, powered by NVIDIA Ada Lovelace architecture, combining the third-generation RT core and the fourth-generation Tensor core, provide high-quality and diverse products to fully meet the needs of the market.



AI Cloud Computing Total Solution

- NVIDIA-Certified System for Enterprise
- System Planning, software Integration

 **NVIDIA**
Certified



AIDMS AI Management Software

The AIDMS management process uses a graphical interface. Users do not need to write programs (No-Code). Start AI deep learning and model training with one click, complete training and verification in three days, and quickly implement application in seven days. Even users who don't understand AI and codes can quickly realize AI digital transformation with Leadtek's assistance.

Industrial application

Semiconductor manufacturing

Consumer electronics

Automobile manufacturing

Medical and pharmaceutical industry

Beverage and food industry



Defect detection



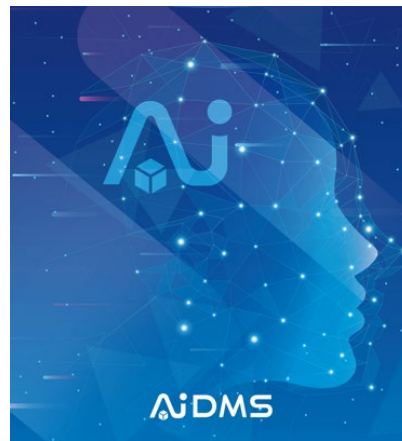
Machine vision



Smart monitoring

Educational application

Accelerate your teaching environment construction, thesis research, industry-university planning



Leadtek Zero Client & Thin Client

Simplify IT Management. Enhance Graphics Performance.

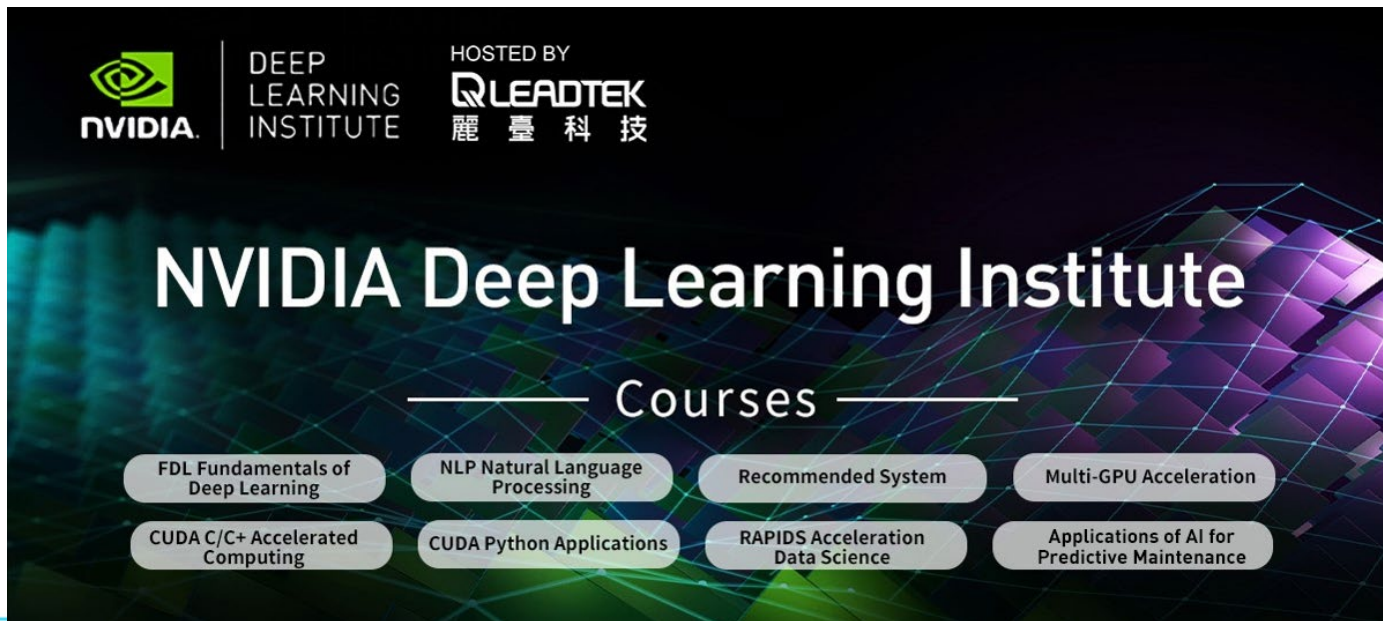
Leadtek delivers truly astounding graphics, highly responsive user-experience, outstanding power efficiency, and the most reliable solution to security-minded, performance-driven organizations over the most challenging network conditions to their on-premises workstations or virtual machine instances in data centers or public clouds.

- **Trusted Zero Client** — Bring remote security and PCoIP Ultra performance, managed through DMS management tool integrated with Anyware Trust Center, helping IT integrate Zero Trust architecture into digital workspaces
- **Zero Client** — No local storage and OS
- **Thin Client** — Smart card identity verification effectively improve security protection
- **Ultra-Thin Client** — Non-removable embedded memory (eMMC) protect sensitive business information



NVIDIA DLI Course

Leadtek is an NVIDIA authorized deep learning institute (DLI), and the courses are taught by Leadtek lecturers who are qualified NVIDIA DLI instructors. Nearly 2000 school and corporate training sessions have been completed, spanning across schools, finance, IT, medical, automobile manufacturing, and many other industries.



The banner features the NVIDIA logo on the left, followed by the text 'DEEP LEARNING INSTITUTE'. To the right, it says 'HOSTED BY' above the 'LEADTEK' logo and the Chinese characters '麗臺科技'. The main title 'NVIDIA Deep Learning Institute' is centered in large white font, with 'Courses' below it. Eight course titles are listed in rounded rectangular buttons: 'FDL Fundamentals of Deep Learning', 'NLP Natural Language Processing', 'Recommended System', 'Multi-GPU Acceleration', 'CUDA C/C+ Accelerated Computing', 'CUDA Python Applications', 'RAPIDS Acceleration Data Science', and 'Applications of AI for Predictive Maintenance'. The background is a dark blue and purple grid pattern.

NVIDIA | DEEP LEARNING INSTITUTE | HOSTED BY LEADTEK 麗臺科技

NVIDIA Deep Learning Institute

Courses

- FDL Fundamentals of Deep Learning
- NLP Natural Language Processing
- Recommended System
- Multi-GPU Acceleration
- CUDA C/C+ Accelerated Computing
- CUDA Python Applications
- RAPIDS Acceleration Data Science
- Applications of AI for Predictive Maintenance

NVIDIA Omniverse Enterprise

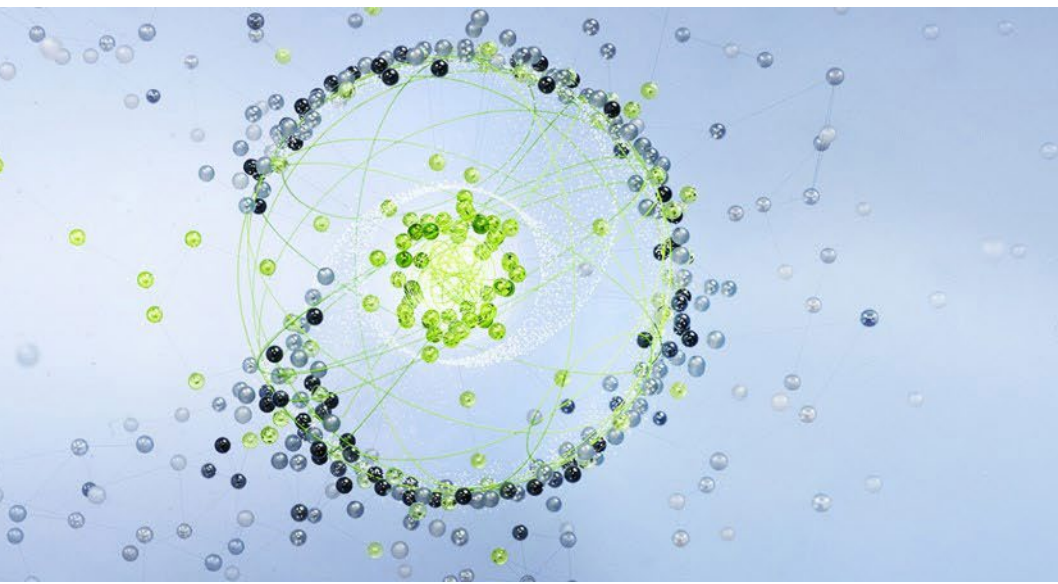
Leadtek is the Asia-Pacific distributor of the NVIDIA Omniverse Enterprise platform.

Creators, designers, and engineers can integrate users and top professional 3D design tools on the Omniverse platform. As updates, iterations and changes do not require data preparation, they are instantly reflected to simplify the work process.



NVIDIA OMNIVERSE

Accelerate workflows and projects with a real-time collaboration and true-to-reality simulation platform for organizations of any scale.



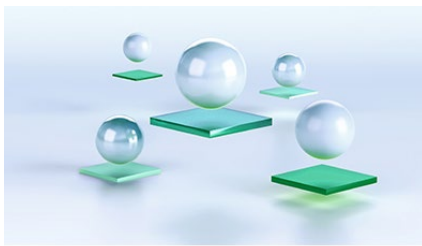
NVIDIA vGPU Solution

In a virtualized environment that's powered by NVIDIA virtual GPUs, the NVIDIA virtual GPU (vGPU) software is installed at the virtualization layer along with the hypervisor. This software creates virtual GPUs that let every virtual machine share the physical GPU installed on the server. Demanding engineering and creative applications, as well as compute-intensive workloads like AI and data science, can be supported in a virtualized and cloud environment.



NVIDIA Virtual Compute Server(vCS)

Power the most compute-intensive workloads with virtual GPUs



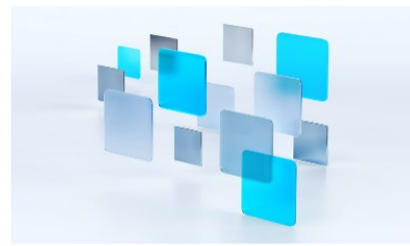
NVIDIA RTX Virtual Workstation (vWS)

Virtual Workstations for creative and technical professionals using graphics applications.



NVIDIA Virtual PC (vPC)

Virtual desktop infrastructure for knowledge workers who use office productivity applications and multimedia.



NVIDIA Virtual Applications (vApps)

Application streaming with Remote Desktop Session Host solutions.

Leadtek Big Data Solution

Provide efficiency-optimized information products and services that help decision making

We assist in the construction of data collection, modeling and cleaning, data storage, data acquisition, data analysis, decision-making models, and intelligent imaging platforms to help users in efficient management, precise focus on development strategies, and create value.



Fields of application



Leadtek has passed 3 information security certifications of SGS ISO

Leadtek Wins 3 SGS

International Information Security Management Certifications

- Information Security **ISO 27001**
- Cloud Service Information Security **ISO 27017**
- Privacy Information **ISO 27701**



Leadtek has been certified by three international management systems: SGS ISO 27001 (information security), ISO 27017 (cloud service information security) and ISO 27701 (privacy information), providing customers with system information security, cloud security and personal information security. The all-round international high-standard security management service shows that Leadtek has become an international leader with the ability to strengthen software development management, information security and personal information protection.

AI Smart Medical Solution



Leadtek Smart Medical Solution

Wearable Medical/ Healthcare Device & Platform Solution

Total Solution of HRV Measurement

- Professional equipment of ECG
- Autonomic nervous system stress analysis technique



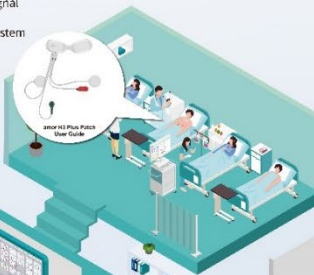
amor Physical and Mental Health Management Platform

- Abnormal alert notifications
- System integration services



Smart Ward Solution

- Wearable physiological signal monitoring system
- Continuous monitoring system and abnormal alert



amor H3 Plus Patch Wear Guide



ATE81 Wireless Remote Pulse Oximeter



amor H3 Plus Wearable ECG Recorder

Sleep Diagnostics Service Program

- Monitoring SpO2 and heartrate continuously
- Combining oxygen saturation and autonomic nervous system analysis
- Easy to test at home, without stay in sleep clinic
- Generate a medical-grade sleep oxygen saturation report.



ATE80 8-Channel Sleep Oxygen Saturation Monitor

OxiTracker Pulse Oximeter (8D52 B)

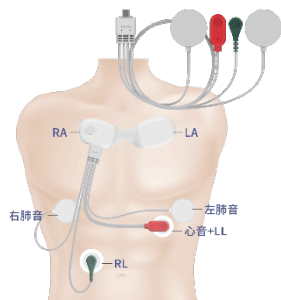
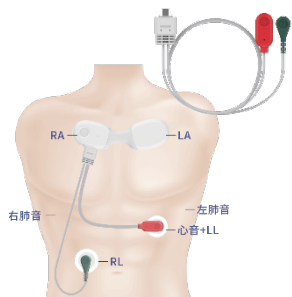
Sleep Diagnostic Service Program

- The 8D52 Wearable Oximetry Monitor is a compact, wearable device indicated for use in monitoring, displaying, and storing functional oxygen saturation of arterial hemoglobin(%SpO₂) and pulse rate(PR), with perfusion index(PI) indication.
- Fast combining autonomic nervous system data collection to synchronize sleep Handy quality analysis. By extracting sleep data and generating medical-grade sleep analysis reports, a diagnostic for sleep apnea doctor can use the report to diagnose the presence of sleep apnea further and determine the appropriate course of treatment.
- Intelligent power saving function : requires only two 2 AAA batteries, providing up to three nights of continuous use.



amor H3 Plus Patch 8Z3C

CCA222LP9300T2
衛部醫器製字第007760號



Single-Lead ECG
Up to 15 days of battery
life



6-Lead ECG
Phonocardiogram
Mode



Sound Detection
Mode



Rapid Screening
Detection Mode



Holter Mode



Sleep Analysis
Mode

Fingertip Pulse Oximeter

Leadtek merged the world-renowned oximeter brand Alvital into its smart medical product line in 2019, further expanding its smart medical lineup. The Alvital fingertip pulse oximeter is designed, developed and manufactured in Taiwan.



Leadtek Cosmeceutical Channel Map



8D01 Leadtek Fingertip Pulse Oximeter



FULLSKIN Facial Repairing Essence



BtNPN™ Deep Relief Patch



LEADTEK Infrared Ear Thermometer



LEADTEK TOUCH FREE Infrared Thermometer

Direct sales channel



屈臣氏 (500餘家門市)



順麗連鎖藥局



躍獅連鎖藥局 (90餘家門市)



中華電信 (700餘家門市)



杏一醫療 (280餘家門市)



LANEW

Distributor sales channel



維康醫療



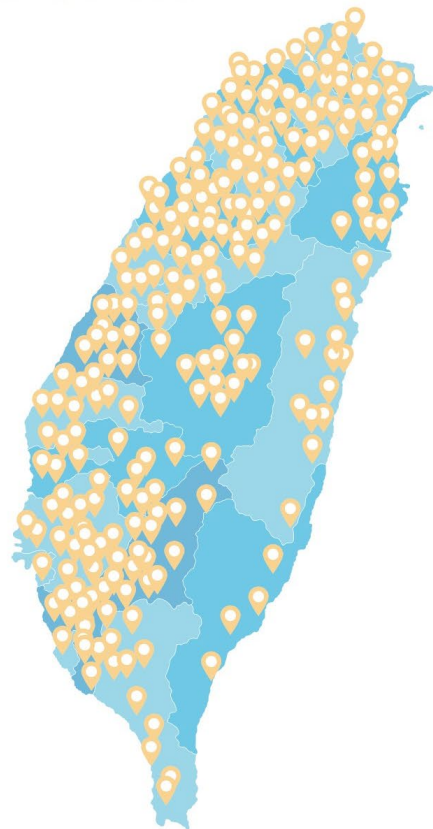
COSMED 康是美

康是美



大樹 大樹藥局

800 small and medium-sized pharmacies and medical material stores across the country sell in collaboration



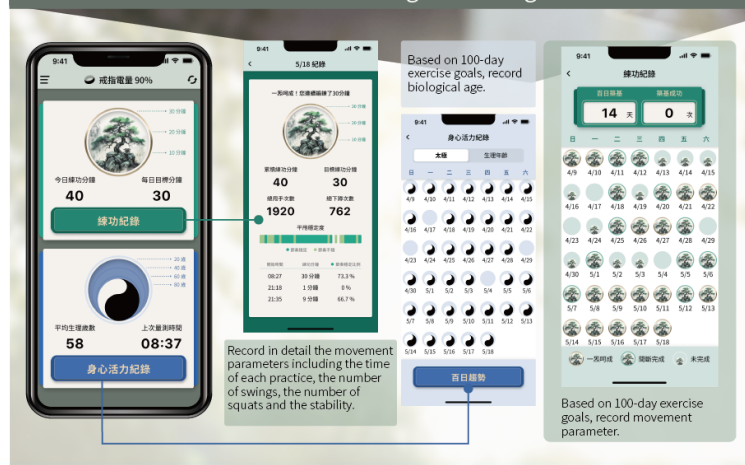
amor PingShuai Ring



- 1 amor Pingshuai Ring provides the user with records of their daily practice parameters and their effects on the body.
- 2 The user's swing parameters can be detected by using a three-dimensional accelerometer, so as to improve the efficiency and accuracy of exercise.
- 3 amor Pingshuai Ring can detect the user's HRV and biological age by a photoplethysmogram (PPG) sensor.
- 4 APP of amor Pingshuai Ring provides the record of 100-day routine, and the user can experience the effective power of it.
- 5 amor Pingshuai Ring is lightweight and waterproof, making it convenient to wear and use every day.



APP of amor PingShuai Ring



Smart Talkie ISM Voice/Data Communication

To address the inconvenience associated with handheld radios, the ISM Voice/Data hands-free two-way communication solution makes command and dispatch more convenient and seamless. In addition, the communication solution integrates the collection of "heart rate information" and "location information," allowing real-time monitoring of user movement and changes in physiological data. This enhances the safety and health management of personnel in industries such as construction, manufacturing, and transportation.

The application scope can extend to group activities like hiking and running, providing features such as alerts for users exceeding heart rate limits and prompts for group care.

