



LEADTEK 2017 Investor Conference

December 19, 2017

Company profile

Incorporation: 1986/10/24

IPO: 1999/6/3

Stock code: 2465

Chairman & President: Mr. Lu Kun-Shan

Headquarters: Taipei, Taiwan

Subsidiaries: China and Japan

Number of employees: 350

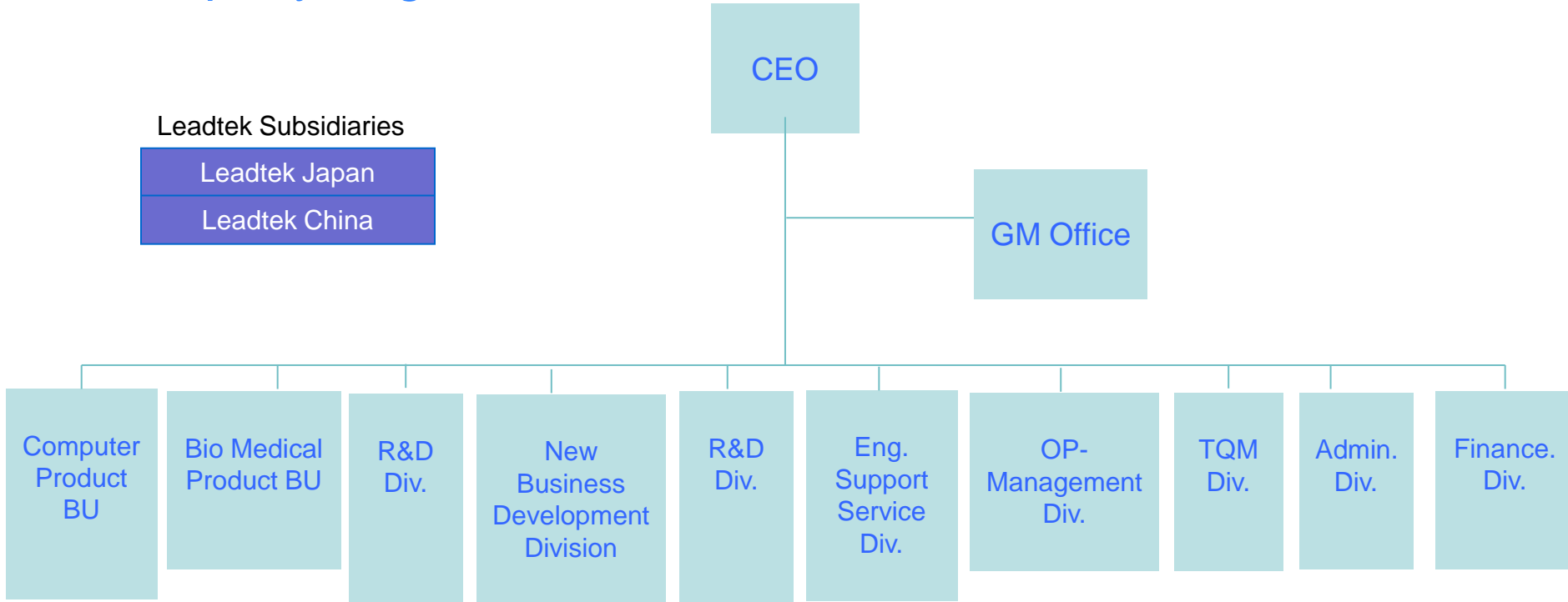




Company Org. Chart

Leadtek Subsidiaries

Leadtek Japan
Leadtek China

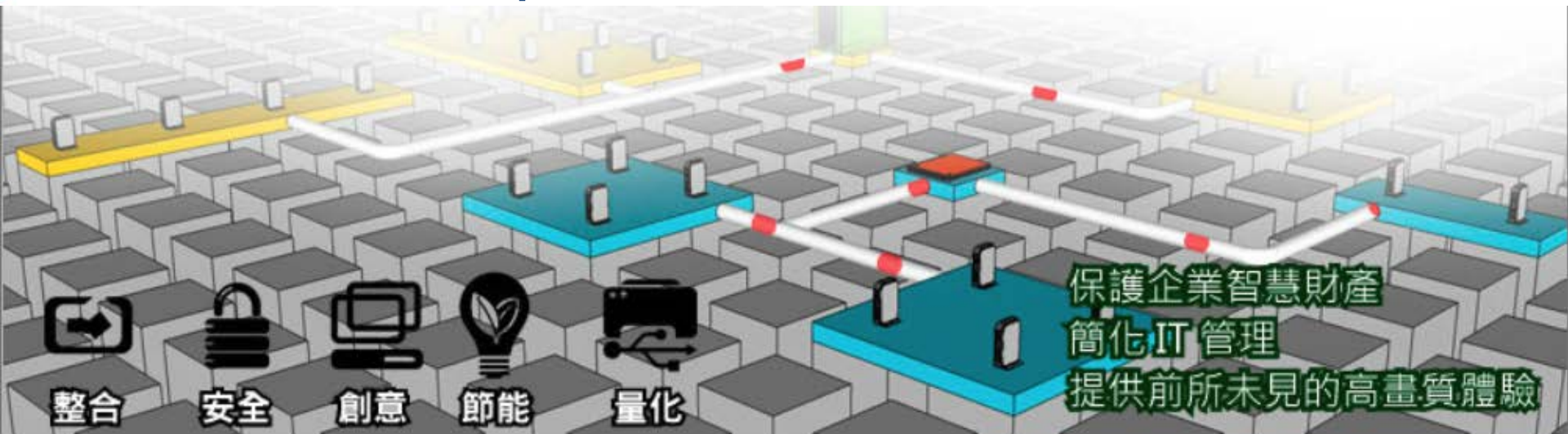


Comprehensive Graphics-Card product lines, popular among consumers

Offering a diversity of consumer-grade/work-
station-grade graphics cards of high quality to
fully satisfy market demands



Experience the best desktop virtualization and best performance of remote work stations



整合

安全

創意

節能

量化

保護企業智慧財產
簡化IT管理
提供前所未見的高畫質體驗



School administration research system

Visual analytics

Statistics

Trend forecast

Data mining

Big data analysis platform

Administration system

Academic system

UCAN

Questionnaire system

Online platform

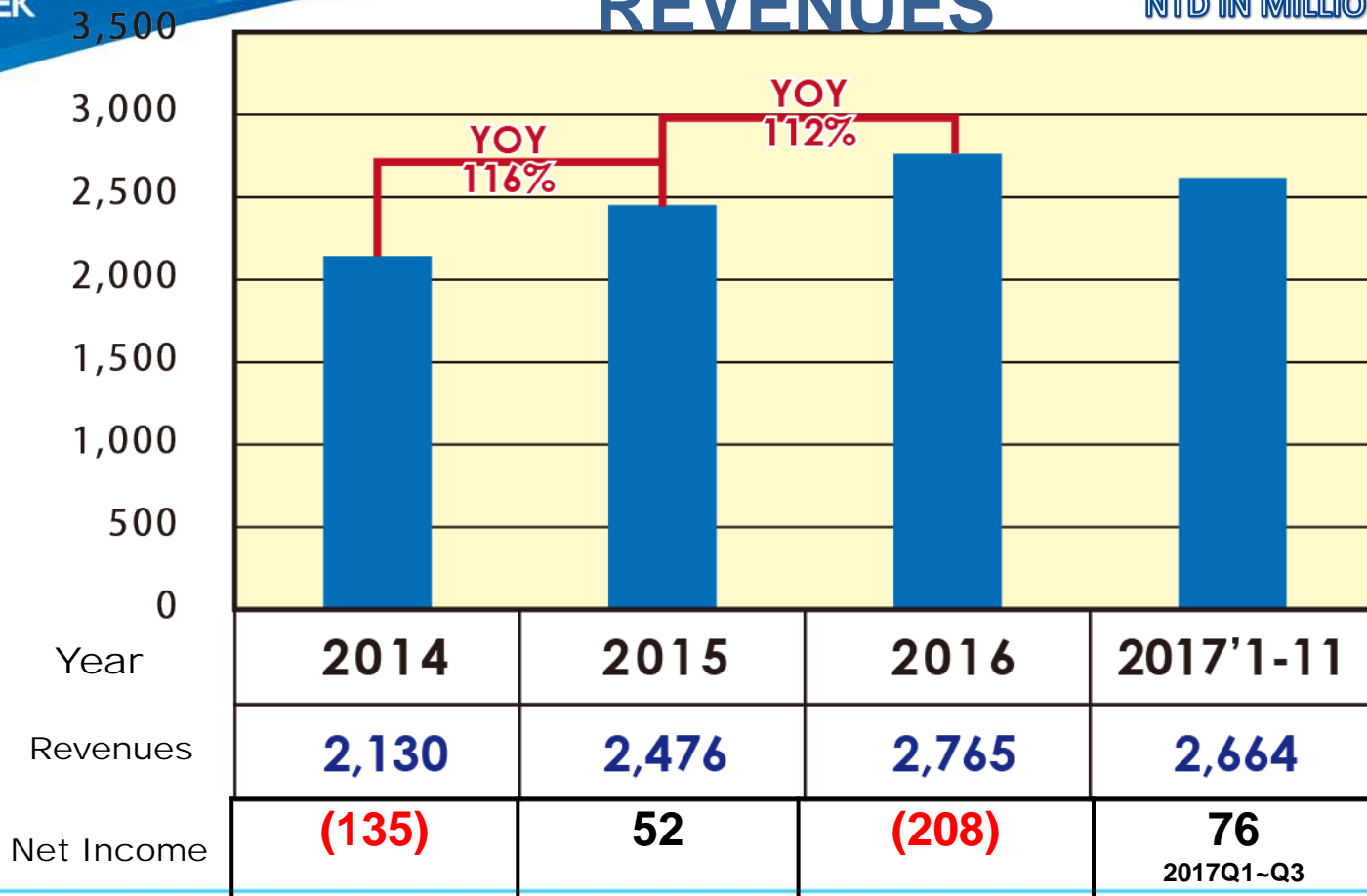
Image and sound

Database

Hadoop

REVENUES

NTD IN MILLION



An omni-directional AI solution

- Deep Learning/Machine Learning
- Medical Health
- IoT
- Big Data



Comprehensive Graphics-Card product lines, 30 years leading brand.

Offering a diversity of consumer-grade/workstation-grade graphics cards of high quality to fully satisfy market demands



Cloud computing solutions that cover all bases

Software-hardware integration of AI/machine learning/deep learning products & all-around solutions to health-care imaging/industry 4.0 and other AI applications



Focus on system-integration solutions; employing multiple graphics-card acceleration function

1. With manufacturing and entertainment industries in mind, offer enhanced rendering and simulation analysis processing functions
2. With educational and scientific research institutes in mind, offer high-performance computing functions
3. Apply AI and deep learning technologies to offer big-data analysis, visual/voice/facial recognition, medicinal diagnosis, market intelligence analysis, and robotics applications
4. With educational and entertainment industries in mind, offer accelerated computing of graphics to create virtual desktop functions

Why is machine/deep learning all the rage?

Big Data Availability

facebook

350 millions
images uploaded
per day

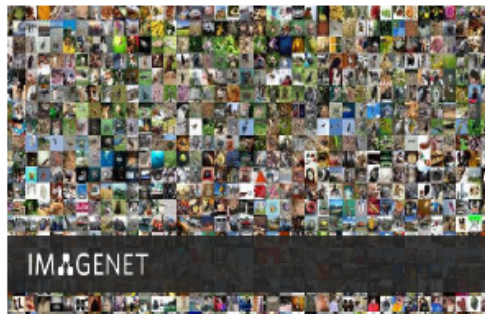
Walmart

2.5 Petabytes of
customer data
hourly

You Tube

100 hours of video
uploaded every
minute

New ML Techniques



Use machine learning technology to
extract information from big data

GPU Acceleration

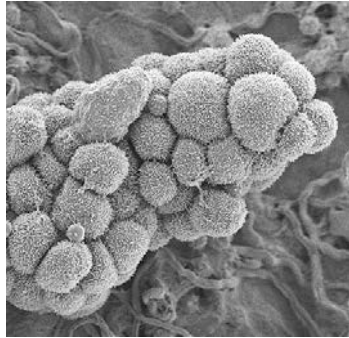


Machine/deep learnings applications are needed in each and every industry



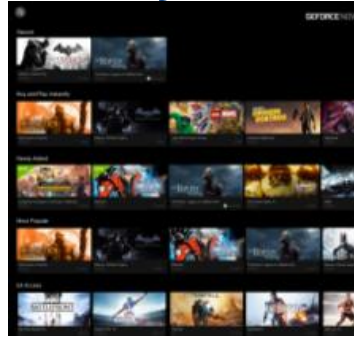
Consumption network; mobile

- Image tagging
- Speech recognition
- Natural language processing
- Recommendation and sentiment analysis



Biomedicine

- Drug discovery
- Diagnostic assistance
- Cancer cell detection



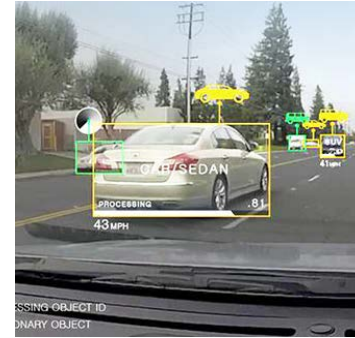
Radio, media, entertainment

- Captioning
- Search
- Recommendations
- Real time translation



Security and public safety

- Video surveillance
- Image analysis
- Facial recognition and detection



Autopilot and traffic

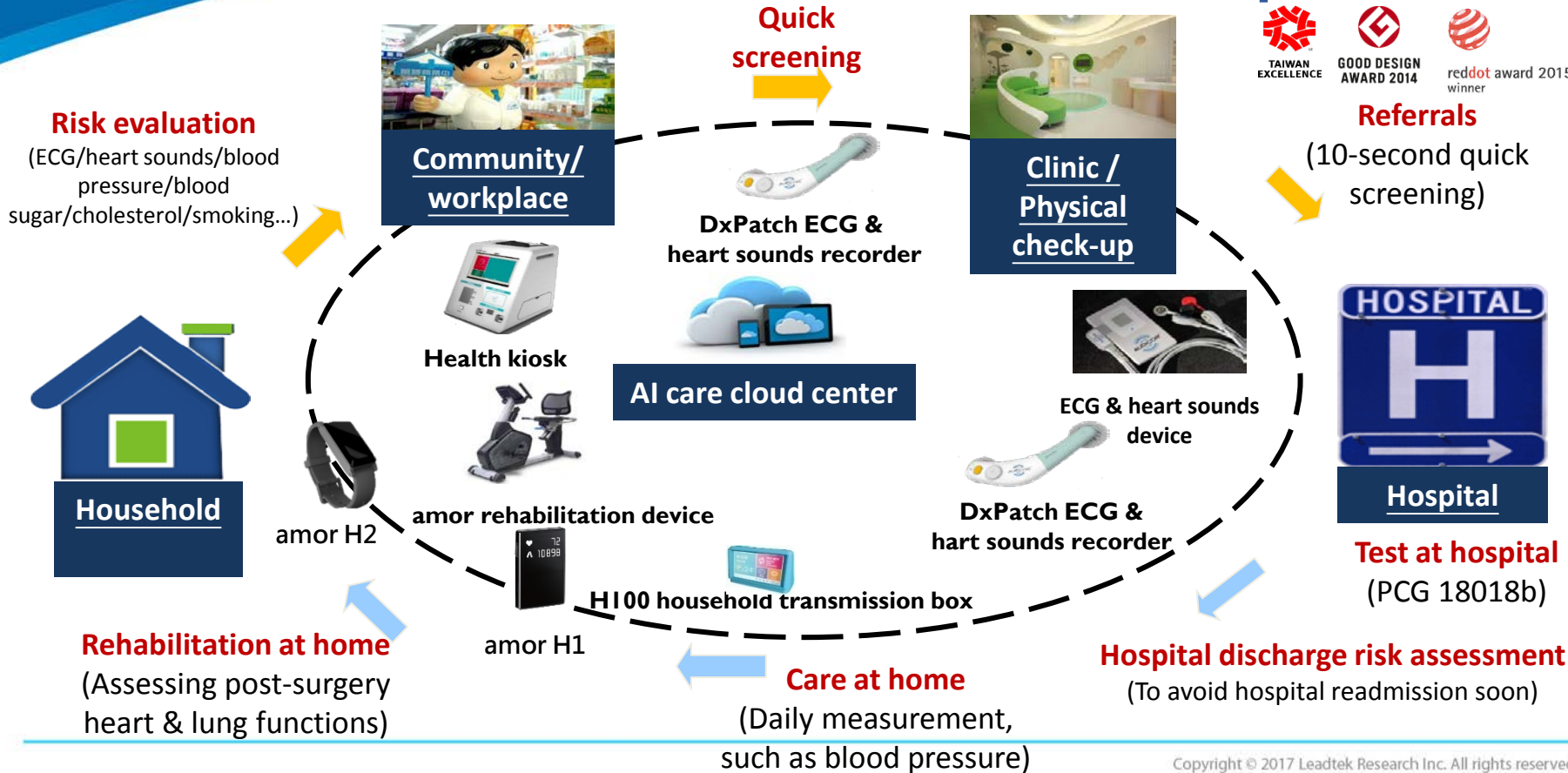
- Autonomous driving
- Pedestrian detection
- Accident avoidance

Successful applications of cloud computing solutions

- Comprehensive solutions offered to various research units and enterprises
- Adoption by other research institutes of Leadtek's world-class cloud computing servers



AI telecare solutions service platform





THANK YOU