

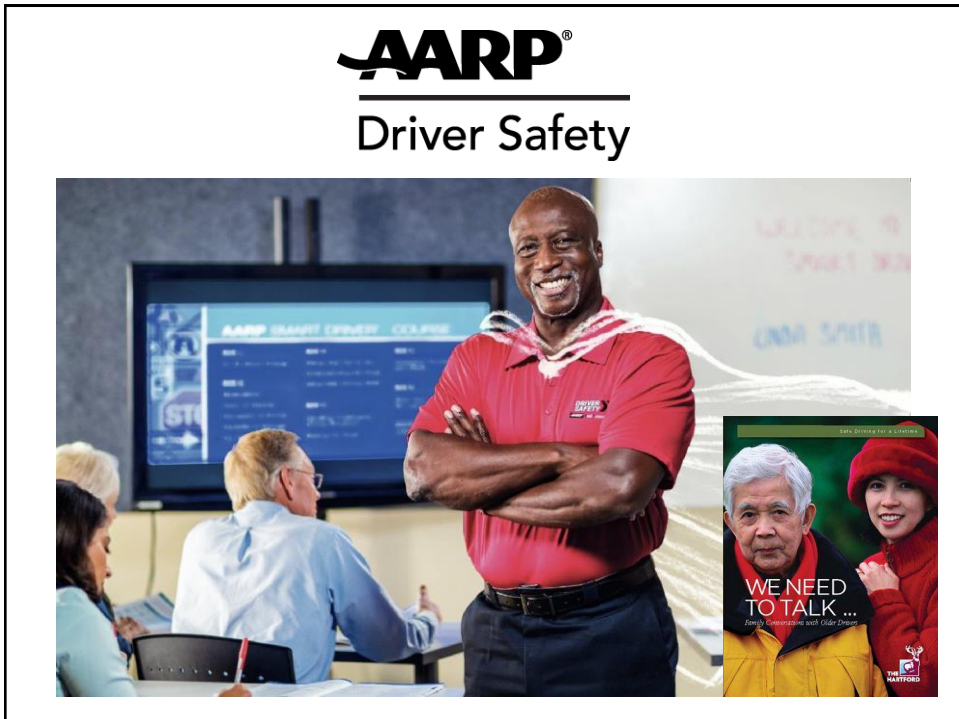
Jay Haapala
Associate State Director –
Community Engagement
651-726-5654
jhaapala@aarp.org



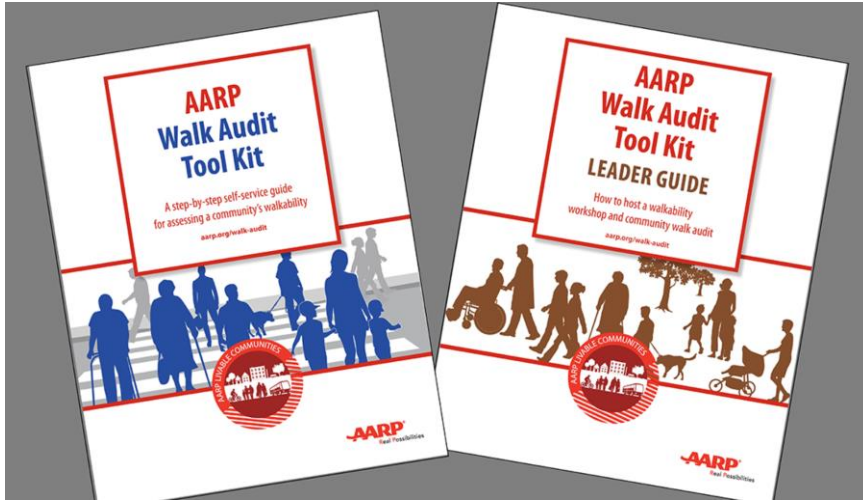
***An increasingly
aging population***



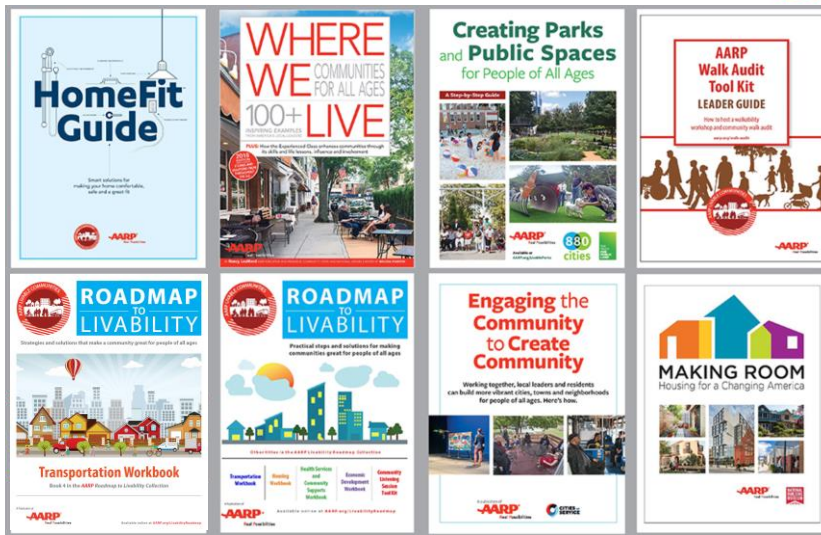
- + the desire to age in place
 - + housing not suitable for aging in place
 - + streets unsafe for non-drivers
 - + a lack of public transit options
 - + numerous other factors – employment, distance from family, health, isolation, sprawl, climate change
- = the reason for the **AARP Livable Communities** initiative and the **AARP Network of Age-Friendly Communities**



AARP.org/Livable



AARP.org/Livable



Jay Haapala
Associate State Director –
Community Engagement
651-726-5654
jhaapala@aarp.org

