



# Interagency Aviation Information Bulletin



No. IA IB 21-09

Date: September 24, 2021

Page 1 of 2

**Subject:** Temporary Flight Restrictions (TFRs) crossing multiple Air Route Traffic Control Center (ARTCC) Airspace Boundaries

**Area of Concern:** Airspace, TFRs, and NOTAM Composition

**Distribution:** Aviation Operations and Dispatch Centers

**Discussion:** A recent Unmanned Aircraft System (UAS) Special Government Interest (SGI) waiver request daylighted additional requirements by the Federal Aviation Administration (FAA) when a TFR crosses multiple ARTCC airspace boundaries. In accordance with [FAA JO 7930.2S](#), location identifier, the affected facility or location (airport, NAVAID, or ARTCC) is to appear AFTER the Notice to Airmen (NOTAM) number. TFRs located within multiple ARTCCs must have a separate NOTAM for each ARTCC. In plain language, if the TFR affects more than one ARTCC, a separate TFR is required for each affected ARTCC.

**FAA Requirements:** *Duplicate TFR notices must be issued for all ARTCCs affected.* Under this policy, it is possible for one incident to require more than one TFR associated with the same incident. Currently, there is no ability to obtain approval for one TFR that crosses multiple ARTCC airspace boundaries. Dispatchers will need to issue a separate A# for each separate TFR.

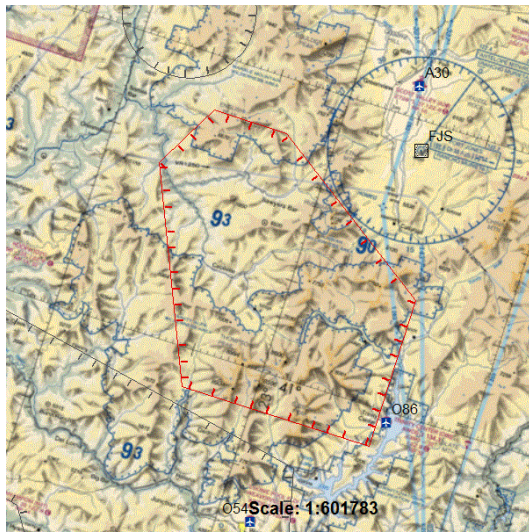
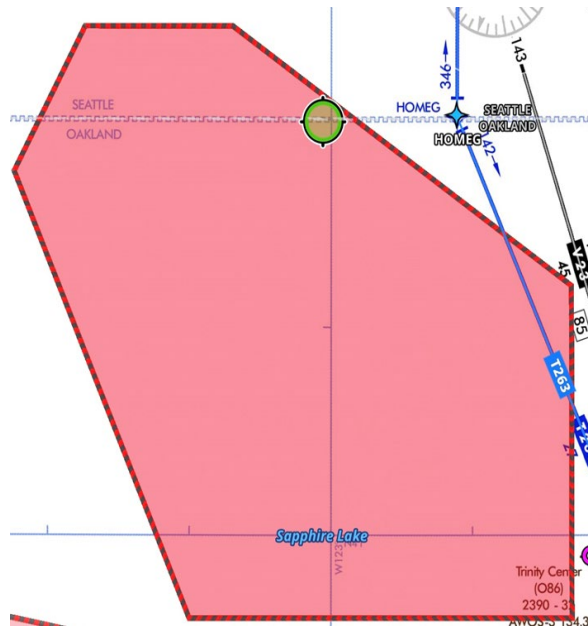
**Example:** Special Government Interest (SGI) waiver or Certificate of Authorization (COA) language, indicating both ARTCCs for RIVER COMPLEX.

- Location and Class of Airspace: WI fire issued TFR ZSE 1/2912 and ZOA 1/2927 – and subsequent TFR's issued in association with the River Complex Fire ZSE/ZOA Class G at or Below: 12,500FT MSL  
Operations areas: Within area depicted in ATTACHMENT #1 under the jurisdiction of Forest Service Yreka Dispatch and Oakland (ZOA) ARTCC and Seattle (ZSE) ARTCC.

TFR depiction in ForeFlight:

**TFR** ZOA 1/2927 TFR (2011-2927-1)  
 Aug 20, 9:00 PM - Sep 20, 1:00 AM  
 EDT (FAA)  
 Active, Surface - 12,500' MSL

**TFR** ZSE 1/2912 TFR (2011-2912-1)  
 Aug 20, 8:45 PM - Sep 20, 1:00 AM  
 EDT (FAA)  
 Active, Surface - 12,500' MSL



Note: Selecting either of the NOTAM numbers in the FAA TFR website (<https://tfr.faa.gov/tfr2/list.html>) will bring up the same TFR graphic.

08/21/2021	<a href="#">1/2927</a>	ZOA	CA	HAZARDS	45NM NW REDDING, CA, Saturday, August 21, 2021 through Monday, September 20, 2021 UTC
08/21/2021	<a href="#">1/2912</a>	ZSE	CA	HAZARDS	45NM NW REDDING, CA, Saturday, August 21, 2021 through Monday, September 20, 2021 UTC

*/s/ Keith C. Raley*

Keith C. Raley  
 Chief, Aviation Safety, Training, Program  
 Evaluation, and Quality Management  
 DOI, Office of Aviation Services

*/s/ Lori Clark*

Lori Clark  
 Branch Chief  
 Aviation Safety Management Systems  
 USDA, Forest Service