



JON S. CORZINE  
Governor

*State of New Jersey*  
OFFICE OF THE ATTORNEY GENERAL  
DEPARTMENT OF LAW AND PUBLIC SAFETY  
DIVISION OF NEW JERSEY RACING COMMISSION  
PO Box 088  
TRENTON, NJ 08625-0088

ANNE MILGRAM  
*Attorney General*

JOHN J. TUCKER  
*Chairman*

June 3, 2008

The Honorable Jon S. Corzine  
Governor of the State of New Jersey  
State House  
PO Box 001  
Trenton, NJ 08625

JAMES G. AARON  
ANTHONY T. ABBATELLO  
ANTHONY R. CAPUTO  
PETER J. COFRANCESCO, III  
NOEL LOVE GROSS  
FRANCIS X. KEEGAN, JR.  
EDWARD R. MCGLYNN  
DANIEL A. MONACO  
*Commissioners*

FRANCESCO ZANZUCCKI  
*Executive Director*

Dear Governor Corzine ,

Pursuant to the provisions of Chapter 17 of the Laws of 1940, as amended and supplemented, the Division of the New Jersey Racing Commission presents herewith its Sixty-ninth Annual Report, covering the period from January 1, 2007 to December 31, 2007.

Respectfully yours,

John J. Tucker, Chairman  
James G. Aaron, , Commissioner  
Anthony T. Abbatiello, Commissioner  
Anthony R. Caputo, Commissioner  
Peter J. Cofrancesco III, Commissioner  
Noel Love Gross, Commissioner  
Francis X. Keegan, Jr., Commissioner  
Edward R. McGlynn, Commissioner  
Daniel A. Monaco, Commissioner

- c Denelle Waynick, Chief of Staff, Office of the Attorney General
- Robert Lougy, Special Assistant, Office of the Attorney General
- David Wald, Director of Communications
- Frank Zanzuccki, Executive Director





*State of New Jersey*

OFFICE OF THE ATTORNEY GENERAL  
DEPARTMENT OF LAW AND PUBLIC SAFETY  
DIVISION OF NEW JERSEY RACING COMMISSION  
PO Box 088  
TRENTON, NJ 08625-0088

ANNE MILGRAM  
*Attorney General*

JOHN J. TUCKER  
*Chairman*

JON S. CORZINE  
*Governor*

June 3, 2008

Anne Milgram, Attorney General  
State of New Jersey  
Department of Law & Public Safety  
PO Box 080  
Trenton, NJ 08625

JAMES G. AARON  
ANTHONY T. ABBATIELLO  
ANTHONY R. CAPUTO  
PETER J. COFRANCESCO, III  
NOEL LOVE GROSS  
FRANCIS X. KEEGAN, JR.  
EDWARD R. MCGLYNN  
DANIEL A. MONACO  
*Commissioners*

FRANCESCO ZANZUCCI  
*Executive Director*

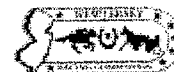
Dear Attorney General Milgram:

Pursuant to the provisions of Chapter 17 of the Laws of 1940, as amended and supplemented, the Division of the New Jersey Racing Commission presents herewith its Sixty-ninth Annual Report, covering the period from January 1, 2007 to December 31, 2007.

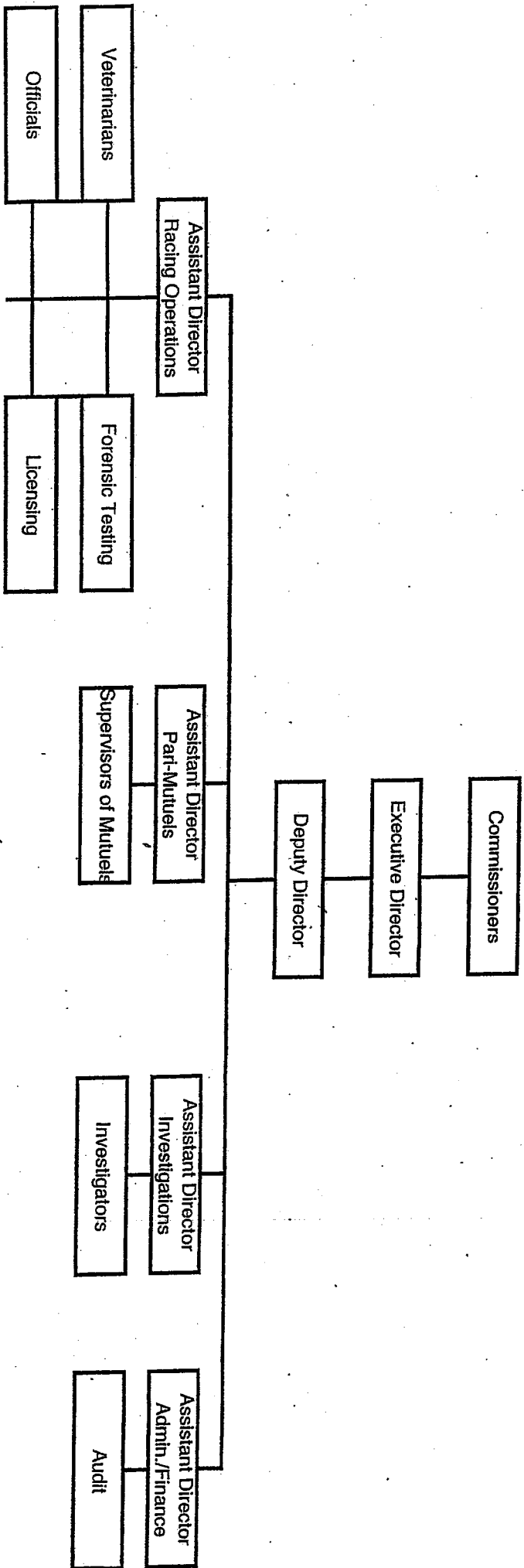
Respectfully yours,

John J. Tucker, Chairman  
James G. Aaron, Commissioner  
Anthony T. Abbatiello, Commissioner  
Anthony R. Caputo, Commissioner  
Peter J. Cofrancesco III, Commissioner  
Noel Love Gross, Commissioner  
Francis X. Keegan, Jr., Commissioner  
Edward R. McGlynn, Commissioner  
Daniel A. Monaco, Commissioner

- c Denelle Waynick, Chief of Staff, Office of the Attorney General
- Robert Lougy, Special Assistant, Office of the Attorney General
- David Wald, Director of Communications
- Frank Zanzuccki, Executive Director



# NEW JERSEY RACING COMMISSION ORGANIZATIONAL STRUCTURE



## Members of The Racing Commission

John J. Tucker, Morris Township  
Chairman, 1999 - present

Mr. Tucker was elected Chairman in January 2002, three years after his appointment to the Commission. Now retired, he had a long and distinguished career in the consumer products industry, most recently having served in senior management positions at Philip Morris Co., Inc. and Kraft, Inc. from 1985-1994. He received a BA in Business Administration from Upsala College and a MS in Business from Northwestern University. Mr. Tucker continues to be active in many professional and civic organizations and is a member of the Advisory Council for Human Resource Management for the Conference Board. Prior to his appointment to the Commission, Mr. Tucker owned and bred thoroughbred horses for over 15 years.

James G. Aaron  
Appointed 2006

Mr. Aaron is a distinguished attorney practicing presently with the firm Ansell, Zaro, Grimm and Aaron, whose offices are located in Ocean Township, New Jersey. Mr. Aaron graduated Long Branch High School in 1962, earned a B.A. degree from Dickinson College in Carlisle, Pa. in 1966, and a J. D. Degree from New York University School of Law in 1969. Mr. Aaron has founded, incorporated and is a member of the Board of Directors of the Monmouth Community Bank. Mr. Aaron is the Vice-President of ERBA Company, Inc. which is a Real Estate and Equity Investment Firm. Mr. Aaron has vast experience in the horse racing and breeding industry having owned standardbred horses from 1983 - 2006. Mr. Aaron was part owner of "San Gimignano" who was the New Jersey Sire Stakes three year old pacer of the year in 2001. Mr. Aaron and his wife Madlyn, have been married 37 years and reside in West Long Branch, New Jersey.

Anthony T. Abbatiello  
Appointed 2006

Anthony T. Abbatiello's love for horses has resulted in 53 years dedicated to the horse racing industry. For 28 years, Mr. Abbatiello served the Standardbred Breeders and Owners Association of New Jersey, both as Co-Founder and as President. Mr. Abbatiello's previous titles included, Chairman of the Board for the United States Trotting Association, Director of the Standardbred Owner's Association of New York, Chairman of the New Jersey Sire Stakes Board of Directors, Trustee Chairman of the Board of American Horse Council in Washington D.C. and Trustee of the Trotting Horse Museum in Goshen, New York.

On July 2, 1995, Mr. Abbatiello was inducted into the Living Hall of Fame in Goshen, New York with his brother Carmine, a 1985 inductee, his induction resulted in the first brother tandem in the Hall of Fame. A decorated war veteran, Mr. Abbatiello served in the Korean War rising to the rank of Captain. Mr. Abbatiello demonstrated courage under fire, receiving numerous commendations including the Combat Infantry Badge, Silver Star, The Bronze Star with Valor, two Purple Hearts, the Presidential Unit Citation, Korean Campaign Ribbon with four Battle Stars and the Korean Service Medal.

Anthony R. Caputo, M.D.  
Commissioner since 2005

Dr. Anthony R. Caputo was born in Newark and raised in Belleville where he attended public school. For high school he enrolled at Seton Hall Prep where he excelled as their Quarterback for three years. After high school, he received his B.S. degree from St. Bonaventure University. Years later he was granted an Honorary Doctorate from St Bonaventure University.

Dr. Caputo earned his Medical Degree in 1969 from University of Bologna. His internship and ophthalmology training was completed at the New Jersey Medical School. In 1974, he was offered a Heed Fellowship at the Wills Eye Hospital in Philadelphia for pediatric ophthalmology. Upon returning to Newark, he was appointed Director of Fight for Sight Children's Eye Care Center and became the first pediatric ophthalmologist to practice in New Jersey.

Peter J. Cofrancesco III, Sparta  
Commissioner since 2001

Mr. Cofrancesco serves as Executive Officer of the Grinnell Group of Companies. Grinnell is family owned and operated with interests in manufacturing of construction materials, transportation services, as well as commercial and residential real estate development. The company was named the 2003 New Jersey Family Business of the Year, an award that recognizes the significant contributions to the economy and community made by New Jersey family businesses. He attended Delaware Valley College, concentrating in Business Management and also received an Honorary Doctorate in Humane Letters from Centenary College in 2003. He is extremely active in many community and professional organizations including directorship of college and hospital foundations, the NJ State Fair and the Interlocking Concrete Pavement Institute. Mr. Cofrancesco is a leading owner and breeder of American Quarter Horses and currently serves as a Director of the American Quarter Horse Association. He and his family have owned an unprecedented 24 AQHA World Champions, and have received the prestigious Leading Owner Award five times.

Francis X. Keegan, Jr.  
Appointed 2006

Mr. Keegan, a lifelong horseman, was appointed to the Commission in 2006. He is a past President of the New Jersey Thoroughbred Breeders' Association, a past President of the New Jersey Thoroughbred Horsemen's Association and was a member of many horsemen organizations, including the Thoroughbred Club of America, the Green Mountain Horse Association, the National Hunt Association, and a patron of the Monmouth County Hunt. He has bred, owned and raced horses in New Jersey since 1963, and has also been a successful consignor at numerous thoroughbred auction sales including Saratoga and Keeneland. He is a graduate of Seton Hall University and attended Fordham Law School and served as an infantry officer after college in the United States Army. He is a Wealth Management Advisor and First Vice President of Investments with UBS Financial Services, Inc. and in March 2006 celebrated 40 years with the firm. Over the years he has served on numerous bank boards, including Carteret S & L Bank of Commerce in Newark and Monmouth Community Bank.

Noel Love Gross, Saddle River  
Former Chair and Commissioner since 1994

Mrs. Gross served as chair of the New Jersey Racing Commission from 1994 to 2001. She received her college education at Sarah Lawrence College in Bronxville, New York. In the private sector, she is President and Chief Administrative Officer of the Hudson Landing Corporation. In the public sector, Mrs. Gross has had a notable career highlighted by her appointment by President Reagan to serve as United States Alternate Representative to the 41<sup>st</sup> and 43<sup>rd</sup> United Nations General Assembly. She was asked to head the US Delegation to the UN Economic and Social Council Organizational Session, and was named head of the US delegation to the Special Session of the UN Development Program. She has also held various positions in the Republican National Committee and, locally, is a member of the Board of Trustees of 70001 Limited Development Foundation. Mrs. Gross is an owner/operator of two horse farms and her horses have won many competitions including multiple Grand Championships by Westfields and first-year Green Hunter of the Year National Championship by Ever So Dark.

Edward R. McGlynn, Point Pleasant Beach  
Commissioner since 1996

Mr. McGlynn received a B.A. degree from McKendree College in Lebanon Ill. and a J.D. from Seton Hall University School of Law. His career encompassed both the public and private sector. He served as Deputy and Chief of Staff to Governor Thomas H. Kean, and Executive and Special Assistant to Attorney General Irwin I. Kimmelman. Currently he is President of ERM Government Affairs, Inc., Senior Vice President of Government Affairs for the Alman Group, LLC, and is Of Counsel to Stone Mandia, Counsellors at Law. His community and professional affiliations are many and include medical and educational groups, and State Commissions.

Daniel A. Monaco, Woodbury  
Commissioner since 1985

Dr. Monaco earned a B.S. in chemistry from Mt. Saint Mary's College and a DDS from Temple Dental School. He served in the Army as captain in the U.S. Army Dental Corps. In 1957, he went into the general practice of dentistry and retired from practice in 1997. His professional and community affiliations include several dental associations and was a member of the dental staff of Underwood Memorial Hospital having served as chief of its Department of Dentistry. In public service, he served on several environmental commissions in West Deptford Township. Dr. Monaco was a co-founder and general partner of the Gloucester County Cable TV Co. He also was an incorporator and director of the Lenape State Bank and the Bank of Gloucester County having retired from banking in 2001. Prior to joining the Commission, Dr. Monaco was an owner and breeder of both thoroughbred and standardbred race horses for over 25 years.

Frank Zanzuccki, Wall Township  
Executive Director since 1992

Mr. Zanzuccki received a B.S. in Accounting from St. Francis College, Loretto, Pa. He was the Chief Accountant for United Mine Workers of America from 1975-1978. He started his career with the New Jersey Racing Commission in 1978 and served in various positions and was appointed Executive Director in 1992. Mr. Zanzuccki was awarded the prestigious Len Foote Award in 1998 in recognition of outstanding contributions to the horse racing industry. He is also the first non-commissioner to be elected to the Association of Racing Commissioners International Board of Directors. In addition to this honor, Mr. Zanzuccki was subsequently elected as an officer of this international organization and served as its chairman from April 2004 through April 2005.

## **STRUCTURE & FUNCTION**

### **MISSION STATEMENT**

The New Jersey Racing Commission ("NJRC"), a Division within the Department of Law and Public Safety, is responsible for regulating the horse race industry in the State through vigilant oversight of all racing related activities to ensure the integrity of the sport and the safety of its participant.

### **Commission Structure**

Horse racing in New Jersey is regulated by nine Commissioners who, by law, are appointed by the Governor, with the advice and consent of the Senate. They set policy and rule on all matters affecting racing such as issuing permits to conduct horse racing meets, approving expenditures and adjudicating licensing matters. They also consider the issuance of licenses for off-track wagering sites, are responsible for the oversight and regulation of account wagering as well as internet betting in New Jersey. This year, nine individuals served as Commissioners: John J. Tucker, Chair, James G. Aaron, Anthony T. Abbatiello, Anthony R. Caputo, Peter J. Cofrancesco, III, Francis X. Keegan, Jr., Noel Love Gross, Edward R. McGlynn, and Daniel A. Monaco.

The NJRC employs staff to effect policy, including an Executive Director who is responsible for overseeing the day-to-day operations of the Commission in accordance with accepted business and financial practices. Francesco Zanzuccki serves as the Executive Director.

NJRC has a staff of 73 full-time employees who conduct the daily functions of regulating horse racing. It also maintains a pool of 34 part-time workers to supplement staff as needed. Activities are divided into four functional areas: Administrative/Financial, Racing Operations, Pari-mutuels and Investigations.

### **Administrative/Financial**

Much of the general administrative functions are performed by the Department of Law & Public Safety's Consolidated Administrative and Support Services unit specifically organized to streamline the personnel, budget and logistics functions of several State agencies.

Commission personnel perform administrative functions specific to racing matters including rule and regulation composition, staffing and scheduling, communications with and oversight of industry-related organizations, adjudication support, and report writing. Commission staff maintains a horse racing financial system that records and calculates all receipts and payments of funds from pari-mutuel wagering. In addition, it monitors the finances of certain industry organizations as required or requested.



### **Racing Operations**

All matters related to the regulation of the actual "running of the races" are the responsibility of the employees in this functional area.

Each individual and entity associated with horse racing must be licensed by Commission personnel. All participants must also be fingerprinted. A state-of-the-art computer system networks the Trenton office with all satellite racetrack locations. The Commission has a very successful mail-out program and participates in the Association of Racing Commissioners International multi-jurisdictional licensing program for owners.

The Commission employs racing officials who are present at each racetrack to monitor the running of every race in New Jersey. They issue penalties for rule infractions and rule on matters affecting the integrity of racing, including licensing concerns.

Veterinarians are also present at every live race meet to ensure the safety of the animals and to verify that each horse is fit to race.

Race horses are tested for the presence of illegal drugs after each race. These randomly selected samples undergo a complete chemical analysis at Commission-sponsored State Police Forensic Laboratory at the Meadowlands Racetrack.

### **Pari-Mutuels**

Every wager made on every live and simulcast race is recorded and checked for accuracy and compliance with Commission rules and regulations. Commission staff calculate financial information from these wagers for proper distribution of funds. Racing Commission staff oversee all aspects of pari-mutuel operations to ensure they are conducted with integrity.

### **Investigations**

An in-house investigative unit provides the Commission with the ability to oversee the integrity of racing by conducting case studies into alleged rule violations, and participates in the litigation process to punish offenders.

## **HIGHLIGHTS AND 2007 KEY ISSUES**

Once again 2007 saw the Commission being very active in the oversight and expansion of the Racing Industry. The Atlantic City computer hub, which serviced the Casino Pari-Mutuel wagering activity, merged into the Autotote Data Center in Mount Laurel and were functioning properly and within the Commission's guidelines. The state of the art data center is operated by Scientific Games, Inc. and now processes all wagers made at New Jersey Racetracks and Casino Race books in Atlantic City, as well as the two operational OTW facilities. In addition, the Data Center is now a regional hub servicing pari-mutuel wagering from out-of states locations and is proving to be a cost effective way of doing business. The Racing Commission maintains a staff at this hub during all hours when wagers are placed to insure that such activities are conducted properly.

Racing Commission staff monitors all aspects of pari-mutuel wagering to ensure compliance with rules and regulations governing betting. On-site supervisors of mutuels check for accuracy of system configuration relative to wagering options, proper transmission of wagers and television signals, and accuracy of pay-outs.

Recording and reporting of all wagers occurs there and are reviewed by Commission staff. These reports are subsequently forwarded to the Commission audit section for further compilation to effectuate the distribution of funds from wagers pursuant to law.

As a result of the Commission's receipt of New Jersey's first OTW application in December 2005, filed by the New Jersey Sports & Exposition Authority and the owners' of Atlantic City Racecourse, the Commission prepared for the staffing and application of already existing regulations which were tailored to this new industry. The Commission has conducted hearings as per statute in 2006, in Vineland, Toms River and Woodbridge Townships.

The first off-track wagering license, for a facility in Vineland City was issued on March 30, 2007. Woodbridge Township is New Jersey's second off-track wagering facility to go online and did so on October 4, 2007. Toms River was issued a license by the Commission in 2007 which license issuance is presently under construction. To date \$30,892,421 in pari-mutuel wagering has occurred at both facilities in 2007.

Several rules are being promulgated by the Commission to insure the safety of horses and jockeys/drivers who compete in New Jersey.

The Commission is looking forward to conducting out-of- state competition equine drug testing, which will enable the Commission to test horses not racing, for EPO and other blood doping performance enhancing agents. These agents can have a long term detrimental effect on horses and compromise the safety of all participants in races in New Jersey. The TCO2 Blood Gas Program has also been expanded to thoroughbred racing in 2007, and the Commission feels these forward thinking rules with stringent penalties will deter the illegal administration of these agents and enhance the integrity of the sport.

The Commission will also mandate two equipment rules which will increase a safer atmosphere for the conduct of racing. Safety reins will be required to be used in both breeds and will dramatically reduce if not eliminate the unexpected snapping of the lines which control a horse's direction during a race or training session. These reins have a double hook up to the horse's mouth bit, one of which is nylon used as secondary backup in case the primary leather rein breaks, allowing the jockey/driver to continue to control his horse in a safe manner.

The Racing Commission has advertised and amended N.J.A.C. 13:70-19.15 ("Shodding of Horses") to address "Toe Grab" horse shoes. The objective of the amendment is to mandate a particular type of horseshoe called a "Toe Grab" not to exceed four millimeters (0.15748 inches) worn on the front feet of thoroughbred horses while flat racing on any track surface or condition.

Studies have shown and have been accepted by the Jockey Club, the Grayson-Jockey Club Research Foundation and the Kentucky Horseshoeing School as well as the A.R.C.I which directly link the wearing of this type of horseshoe in excess of four millimeters to musculoskeletal injury and fatality in thoroughbred race horses. The A.R.C.I. has drafted a model rule which is being adopted by several major racing states and, when adopted in New Jersey, will provide a safer environment for both horse and jockey.

After a further review of some of the key issues that affected the Horse racing industry in 2007, the most significant is the enhanced revenues dedicated to the sport from slot machine or video lottery terminal (VLT) proceeds in other states. Directly affecting New Jersey are West Virginia, Delaware, Pennsylvania, and New York, which already have these systems operational at racetracks (i.e., racinos). Revenues from these systems increase purse money in these jurisdictions and enable them to attract better quality horses resulting in a superior product. The New Jersey casino industry has dedicated \$86 million to the New Jersey horse racing industry, to be used for horse race purses and the balance of approximately \$22 million was used through 2007. This money is essential in keeping the quality of racing in this state competitive with surrounding jurisdictions. This problem not only affects the racing industry but the horse and farm industry as well as the economic and job impact on the state will be felt by all if this matter is not addressed long term and money spent in a more forward direction.

Most of the casino subsidy money went toward purses, with no money spent for improving racing facilities and little for breeding incentives. To illustrate the decline of the standardbred portion of the industry alone, 20 years ago there were 100 standardbred champion stallions standing stud in New Jersey. Today there are about 15.

In a money driven sport like horse racing, people bring their product where incentives are greater and due to the inception of racino's in surrounding states such as Pennsylvania where over \$20 million in breeders awards are available due to the added money, New Jersey offers \$11 million. The total economic impact of the equine industry in New Jersey is \$1.1 billion annually. The total includes \$278.2 million for racing related operations, excluding racetracks; \$262.2 million for non-racing operations; \$117.8 million for equine owners without operations; and \$502.3 million for New Jersey racetracks.

The equine industry in New Jersey employs almost 13,000 people, with 3,820 jobs generated by racetracks and 9,150 jobs generated by equine operations other than racetracks. There are 42,500 horses in the state, with 12,500 of them in racing related activities. Among these, 8,200 were racing related standardbreds, and 4,300 were racing related thoroughbreds. There are 7,200 equine operations in New Jersey with a total of \$4 billion of equine related assets. Monmouth County is home to 960 of these operations with a total of 27,300 equine related acres. In the state overall, horses have a total worth of \$582 million, land and buildings (excluding racetracks) associated with the industry have a worth of \$2.9 billion and racetracks assets are valued at \$476 million. In New Jersey, a total of 176,000 acres are used for equine operations which is the size of four New Jersey counties. Of that acreage 96,000 acres are directly related to equine activities while 78,000 acres are devoted to pasture and hay production. This horse related acreage represents one-fifth of the states 790,000 acres of agriculture.

The New Jersey horse industry is a significant ingredient to the states economy. Unless the funding of purses, and the funding of breeding programs is addressed in a permanent basis, New Jersey will continue to lose revenues and horses to the surrounding states that have them.

The highlight of 2007 was the running of the Breeders' Cup World Championships of Thoroughbred Racing conducted at Monmouth Park on October 26 and 27, 2007. The Breeders Cup Association was formed by thoroughbred breeders, most from Kentucky but have a worldwide membership board that is headquartered in Lexington, Kentucky. They were formed to promote the worldwide breeding of thoroughbred race horses. The Association charges fees to register stallions whose foals or offspring become eligible to race in this event. The money from these fees go to create a huge purse structure and the Association each year chooses a location (racetrack) to conduct this event. The Breeders' Cup at Monmouth Park in 2007 lived up to the expectations of everyone with \$23 million on the line in 11 races featuring the greatest thoroughbred racehorses in the world.

Just as severe weather played havoc with many facets of the 2007 Breeders' Cup, the blustery, sloppy conditions hit the bottom line of handle figures at Monmouth Park during the first ever two day world championships.

Sub-par track conditions resulting from an estimated two inches of rain over four days, was blamed for a double drop in all sources handle from last year's wagering set at Churchill Downs, based on a Saturday to Saturday comparison. Bettors feeding into closed pools wagered \$111,903,685 on the October 27<sup>th</sup> (Saturday) card at Monmouth Park, according to preliminary data, initially yielding a 20.3 percent decline from the \$140,332,198 recorded at Churchill Downs in 2006. Factoring in an estimated \$5 million from separate pools in countries such as Hong Kong, Australia and France, wagering totals that aren't validated until a few days after the Breeders' Cup the overall decline ranges from 16 percent to 17 percent. That's better but still a significant decline.

"The reality is, if we had this weather the four days, our numbers would have been significantly higher," said Greg Avioli, Breeders' Cup President and Chief Executive Officer, addressing the October 28 media breakfast on a crisp sunny morning. "Obviously we were hoping for more, because we had good growth through the years." Ken Kirchner, a Breeders' Cup simulcasting consultant, said the treacherous looking tracks made some bettors less than confident. "I talked to

a number of players that simply said they were uncertain because of the severe track conditions, and so they pulled their bets back," he said. "And that's not unusual at every track in the country, where you see players pull their bets back on off conditions.

But the weather didn't stop on-track patrons from getting bets down. A single day record for on-track handle at any New Jersey track was established on the opening day Breeders' Cup card (October 26, 2007) when \$5,038,975 was wagered. That record didn't last long, as \$12,726,622 was wagered on-track for the October 27 card. The October 27 on-track total wagered by 41,781 patrons at Monmouth Park was 30.3 percent lower than the 18,259,971 record bet by the crowd of 75,132 at Churchill Downs in 2006 but per capita spending was higher (\$304 this year; \$243 last year).

"Over four days, we put 80,000 people through these gates. We fed them. We kept them as dry as we could. And we gave them great races," said Dennis Dowd, Senior Vice-president of Racing for the New Jersey Sports and Exposition Authority. Dowd told those gathered at the media breakfast that during the four days, he only had one complaint about a mutuel line ("what racetrack manger can say that? He asked), and only one complaint about food service. "We threw an open bar for an hour there, and it made people very happy," he said with a chuckle.

Having a bad weather Breeders' Cup resurrects opinions about holding the event only in fair weather havens. But consulting event manager Damon Thayer said that would eliminate prime locations such as New York tracks and Churchill Downs among others. Thayer also noted warm weather sites are not exempt from trying conditions. The 1999 Breeders' Cup at Gulfstream Park was held under constant hurricane threats and the 2003 Breeders' Cup at Oak Tree at Santa Anita Park was hampered by 100 degree heat and nearby wildfires which spread ash on the stands like a light snow fall. This (bad) weather is not germane only to New Jersey," he said. "Earlier this week, we had this same weather at Keeneland."

Preliminary wagering totals weren't released by Breeders' Cup officials until about three hours after Curlin won the Breeders' Cup Classic - Powered by Dodge (Gr. 1) but Kirchner said that delay is not unusual. "It's part of our verification process of the Pick-6," he said, noting the scandal of that exotic wager during the 2002 Breeders' Cup at Arlington Park. "We've done it ever since then." Kirchner said officials contact each of the outlets where winning tickets are sold. This year there were six correct plays valued at \$321,813 each. "We have them verify it was a live ticket and everything was proper with the Pick 6 winning tickets," he said. "We had to chase down six different outlets. That takes a little bit of time." The first race chart issued following the Classic showed a different total for a winning Pick 6 ticket, but later corrected to show a true pay-out. "That shouldn't have happened," Kirchner said. "I am not sure how the number got out. We will have to talk to Equibase about that, because that was an error. What was paid out was absolutely correct."

Common pool wagering on the eleven Breeders' Cup races contested over two days total \$125,287,556, while the figure for all 21 races was \$142,700,099. Off-track handle on the October 26 card was \$25,331,696, while the announced crowd of 27,803 bet \$5,038,975., producing an all sources gross of \$30,370,671. "We were pleased with Friday's totals, but we might have been conservative with our early estimates," Kirchner said. "We were pleasantly surprised, but we had no basis of comparison."

The attendance figure of 41,781 was the lowest recorded since 27,246 attended the 1995 Breeders' Cup event at Belmont Park, and fell short of the all time record of 80,452 at Churchill Downs in 1998.

## NEW JERSEY RACETRACKS

The Meadowlands Racetrack  
50 State Route 120  
East Rutherford, New Jersey 07073  
201-The-Big M Meadowlandsracetrack.com

The Meadowlands and Monmouth Park are operated by:  
New Jersey Sports and Exposition Authority

Carl J. Goldberg	Chairman
Joseph Buckelew	Vice Chairman
Joseph M. Forgione	Treasurer
Jerold L. Zaro, Esq.	Secretary
Raymond H. Bateman	Member
Geroge A. Castro II	Member
Richard Dressel	Member
Armando Fontoura	Member
Reverend Dr. David Jefferson	Member
Pamela T. Miller, Esq.	Member
Michael Neglia	Member
Fredrick P. Potter, Jr.	Member
Anthony Scardino, Jr.	Member
Bradley I. Abelow	Ex Officio Member
Susan Bass Levin	Ex Officio Member
George Zoffinger	Ex Officio Member

**George R. Zoffinger**  
President &  
Chief Executive Office

**Dennis O. Dowd**  
Senior Vice-President  
Racing

The Meadowlands conducted 160 days of standardbred racing and 30 days of thoroughbred racing in 2007 as well as year round simulcasting on a multitude of out of state race programs.

## HARNES

Opening its initial harness meeting on September 1, 1976, the Meadowlands soon skyrocketed to be the premier harness track in the world and New Jersey the number one harness (standardbred) breeding state in the country for many years after.

### Wagering on Meadowlands Standardbred Live Racing

<u>2005</u>	<u>2006</u>	<u>2007</u>
\$433,766,004	\$386,302,499	\$329,699,822

## THOROUGHBRED

On September 6, 1977 the Meadowlands opened its doors for its first ever thoroughbred meet to 25,158 who bet \$2,480,393.

### Wagering on Meadowlands Thoroughbred Live Racing

<u>2005</u>	<u>2006</u>	<u>2007</u>
\$41,848,976	\$63,248,612	\$57,353,990

Simulcast wagers for both breeds on out of state programs was \$306,020,687 in 2007 compared to \$337,530,702 in 2006.

## MONMOUTH PARK

Opening in 1870 Monmouth Park's summer meeting remains New Jersey's marquis event for thoroughbreds. Monmouth Park is home to the \$1 million Grade 1 "Haskell Invitational" which remains a pivotal race after the triple crown series.

Monmouth Park conducted 79 live racing days in 2007.

### Wagering on Monmouth Park Thoroughbreds Live Racing

<u>2005</u>	<u>2006</u>	<u>2007</u>
\$258,764,507	\$241,884,292	\$370,137,280

Simulcast wagers on out of state race programs was \$126,544,305 in 2007 compared to \$128,765,538 in 2006.

## FREEHOLD RACEWAY

Freehold Raceway  
130 Park Avenue  
Freehold, New Jersey 07728  
732-462-3800 www.FreeholdRaceway.com

Freehold Raceway is owned and operated by Pennwood Racing

Donald R. Codey	President & General Manager
Robert Ippolito	Secretary
Francis F. McDonnell	Asst. Secretary
Lennon Register	Treasurer & Chief Financial Manager
William Clifford	Member
James Tinik	Controller
Dennis Howard	Director of Mutuels
Howard Bruno	Director of Admissions
Gary Wolff	Track Superintendent
Bill Wikoff	Director of Security
Tom Sexton	Director of Simulcasting
Mike Jaffe	Director of Food & Beverage Services
Michelle S. Dolan	Director of Human Resources
Larry Lederman	Track Announcer
Autochart, LLC	Teletimer/Photo Finish
World Wide Racing Studios	Track Photographer

Freehold Raceway actually opened in 1853 and is the oldest continuous daytime harness track in the country.

Freehold Raceway conducted 192 live racing programs in 2007, racing standardbreds only over the country's fastest half mile oval.

### Wagering on Freehold Live Harness Racing

<u>2005</u>	<u>2006</u>	<u>2007</u>
\$140,154,320	\$133,188,283	\$ 118,758,018

Simulcast wagers on out of state racing programs were \$100,031,264 in 2007 compared to \$103,039,420 in 2006.



## ATLANTIC CITY RACE COURSE

Atlantic City Race Course  
4501 Blackhorse Pike  
Mays Landing, New Jersey 08833  
609-641-2190

Atlantic City Race Course is owned and operated by Greenwood Racing, Inc.

Bill Hogwood	CEO, Greenwood Racing Inc.
Joe Wilson	COO, Greenwood Racing Inc.
Anthony Ricci	Chief Financial Officer, Greenwood Racing, Inc.
Maureen Bugdon	President, Atlantic City Race Course
Jim Miller	AC Racebook, General Manager
Sal Sinatra	General Manager Live Racing
Bill Gatto	Director of Grounds and Facilities
Mary Jo Coutts	Assistant Director of Operations
Gerry Snyder	Office Manager

Atlantic City Race Course opened in 1946 and raced harness and thoroughbreds until 1976, when the first full season of thoroughbred night racing at any major track became a reality. On September 28, 1983, the nations first simulcast was transmitted from the Meadowlands to Atlantic City Race Course.

Atlantic City Race Course raced 4 live thoroughbred racing programs in 2007.

### Wagering on Atlantic City Live Racing

<u>2005</u>	<u>2006</u>	<u>2007</u>
\$412,528	\$692,858	\$731,283

Simulcast wagering on out of state programs was \$21,771,519 in 2007 compared to \$22,218,948 in 2006.

### Wagering at Casinos

Wagering on horse racing also occurs at Atlantic City casinos. Eight "race books" accept wagers on races run in New Jersey and out of state. All bets are commingled with the host racetrack, via the Data Center in Mount Laurel, producing uniform pay-outs.

The amount wagered during the year at these facilities totaled \$110,617,856 this represents a 3.1 % decrease from last year's total of \$114,134,411. By law, a portion of the commissions generated by these wagers is earmarked for deposit into the Casino Simulcast Special Fund for distribution to racetracks and industry-specific funds.

Pari-mutuel activity generated in 2007 at the casinos range from \$ 3,385,177 at the Trump Marina to \$37,755,770 at the Borgata.

Account wagering completed its first full year in 2006 with \$51,935,127 wagered on the internet compared to \$64,319,014 in 2007. Phone wagers totaled 9,045,307 in 2006 compared to \$12,287,206 in 2007.

Through December 31, 2007, wagering at New Jersey racetracks totaled \$876,680,393. Wagers made outside New Jersey on New Jersey races totaled \$554,367,774, resulting in a total handle of \$1,431,048,167. This represents a 0.8% increase when compared with the 12 month totals from last year.

Attendance during live racing totaled 1,705,199 through December 31, 2007.

NJRC's FY 2007 budget totaled \$9,768,874. It is comprised of \$637,114 in licensing revenue and \$377,025 in revenue from uncashed tickets. The balance of \$8,754,735 is generated from direct assessments to the racing industry.

NJRC's Equine Drug Testing Program is administered at the New Jersey State Police Forensic Science Laboratory located at the Meadowlands racetrack. A staff of 14 chemists use modern testing equipment and methods to detect the presence of illegal substances in horses. In 2007, 24,894 blood samples and 8,524 urine samples were collected and tested resulting in 11 violations of the Commission's medication rules. In addition, 6,926 blood gas samples from standardbreds were collected resulting in 1 positive.

The Commission also randomly tests jockeys and drivers for the presence of illegal drugs. It also tests for alcohol abuse by race participants and officials. In 2007, 7 positives were detected from 848 samples tested.

## **NEW JERSEY HORSE RACING INJURY COMPENSATION RACING BOARD**

The Commission encouraged the creation of this Board that provides low cost group workers' compensation insurance for the horse racing industry. The Board consists of representatives of the public and private sector including members of horse race organizations, insurance providers, state insurance departments, and the NJRC. The program covers employees of the Board, namely drivers, jockeys and exercise riders with 2007 premiums established at over \$1.5 million.

## **THOROUGHBRED ORGANIZATIONS**

*Thoroughbred Horsemen's Association of New Jersey*, a not-for-profit corporation which advocates thoroughbred racing in the State. It provides general administrative services to its members including a group health benefits program.

*Thoroughbred Breeders Association of New Jersey* is an organization devoted to promoting and enhancing the breeding of New Jersey thoroughbreds. The Racing Commission administers the Breeders Award Program that provides monetary incentives to owners and breeders by offering purse enhancements for races for New Jersey breds.

**STANDARD BRED ORGANIZATIONS**

*Standardbred Breeders and Owners Association of New Jersey* is a not-for-profit organization dedicated to advancing the cause of standardbred racing in the State. It provides general administrative services to its members including a group health benefits program.

*New Jersey Sires Stakes*, an agency within the State Department of Agriculture, promotes the owning and breeding of New Jersey standardbreds. Nearly \$11 million in purse money is devoted to Sires Stake races restricted to horses sired by stallions resident in New Jersey. The program is funded by distributions from pari-mutuel handle at harness tracks and from nominating and sustaining payments by horse owners.

**NEW JERSEY  
2007 THOROUGHBRED RACING DATES**

Atlantic City Race Course

April 25, April 26, May 2, May 3 4 Dates

Monmouth Park

May 12, 13, 19, 20, 26, 27, 28  
June 1 through September 2 79 Dates  
October 24, 25, 26, 27 (Breeders Cup)

Dark: Mondays and Tuesdays

Meadowlands Racetrack

September 3, 7, 8  
September 11 through November 10 41 Dates

Dark: Sundays and Mondays  
Tuesday, November 6  
October 23 through October 27, October 30 \_\_\_\_\_

Total Thoroughbred Dates: 124 Dates

Total Programs: 468 Dates  
*(Thoroughbred and Harness)*

**NEW JERSEY  
2007 HARNESS RACING DATES**

Freehold Raceway

January 1 through June 9

Dark: Sundays and Mondays during January and February  
(Except Mondays: January 1, 15 and February 19)  
Tuesdays: January 2, 16 and February 20  
Sundays, Mondays, Tuesdays during March through June

100 Dates

(Except Tuesday, March 6 and Monday, May 28)  
May 30, 31 and June 6

August 9 through December 31

Dark: Sundays and Mondays during August and September  
(Except Monday, September 3)  
Tuesday, September 4  
Sundays, Mondays and Tuesdays during October through December  
(Except Mon. Oct. 8, Tues. Nov. 6, and Mon., Dec. 31)  
Thursday, November 22

92 Dates

Meadowlands Racetrack

January 5 through August 4

Dark: Sundays, Mondays and Tuesdays during January  
Mondays and Tuesdays during February  
Mondays, Tuesdays, Wednesdays March 21 through May 9\*  
Sundays: February 4, April 8, May 27  
(Except Monday, May 28)  
Sundays, Mondays and Tuesdays during June through August

129 Dates

November 16 through December 29

23 Dates

Dark: Sundays, Mondays and Tuesdays  
Thursday, November 22  
December 26, 27

Total Harness Dates:

344 Dates

\*3/13/07 Amended to eliminate (8) Wednesday dates

## PLANS AND INCENTIVES FOR 2008

In 2008 the Commission will continue to review studies done on performance enhancing stimulators in the equine industry as the ever evolving science diversifies itself into becoming an even bigger concern for the race fan and participants. Groups such as the "Racing Medication and Testing Consortium" have made national recommendations on the use of steroids and other medications which effect performance and will be considered by the Commission for validity.

The result of the Commission's review will determine if new rules, testing methodology and standards of due process shall be adopted or revised in the upcoming year. Both horse breeds racing in New Jersey will be directly affected by the Commission's determination. "Amicar", which is a medication which may complement "Lasix" in controlling respiratory bleeding in horses, will also be considered by the Commission for permanent use in the state. Studies now being completed in 2008 will be reviewed by the Commission along with expert testimony to determine whether this medication can continue to be used in New Jersey.

The Commission will also oversee the litigation now taking place in Toms River regarding the opening of New Jersey's third off-track wagering facility.

Subject to the courts decision, the Commission will work closely with the Sports & Exposition Authority, Greenwood and Pennwood Racing, LLC. to the orderly construction, staffing and ultimate opening and operation of this soon to be state of the art wagering facility. Toms River expects its opening and will join already operational OTW facilities located in Vineland City and Woodbridge Townships.

The Commission will also consider one or more applicants, to be filing to open additional off-track wagering facilities in the state. Hearings will be held as per statute, by the Commission and the process will be followed until the facilities opening.

As in years gone by 2008 will find the Commission conducting essential day to day projects which include licensing and investigations, as well as the oversight of the state of the art equine testing laboratory. Vigilant observation of racetrack activities both on the racetrack, the backstretch and on the off track farms licensed by the Commission will remain a priority which will keep the integrity of the industry healthy.

In 2008, the Commission will be focusing on pari-mutuel wagering security issues which is a nationwide concern due to the growth of simulcasting. The Association of Racing Commissioners International is devising a plan to deal with issues such as the interfacing of tote systems, the simultaneous closing of betting windows, and "armor" that protects tote systems from intrusion. These present some of the topics which the Commission will review.

The Commission is in support of the ARCI's effort in addressing tote issues as the advance in technology strides forward and the integrity of tote systems remains key. The Commission has always participated in the nationwide effort to keep tote standards current, and in 2008, will again be a driving force in this ever changing and evolving segment of racing.

## NEW JERSEY RACING IN THE NEWS

### ALWAYS A VIRGIN TAKES \$297, 500 CANE PACE FINAL AT FREEHOLD

The Cane Pace is the first race in pacing's triple crown. The other races being the Little Brown Jug (September 20) and Messenger Stakes (October 27). In the September 20 contest, Always A Virgin took the lead at the half and never looked back to win the 53<sup>rd</sup> edition of the \$297,500 Cane pace at Freehold Raceway. In doing so, the Joe Holloway trained colt equaled the track record 1:51.1 for three year old colts. This was the first ever Cane for both driver Brian Sears and Holloway. Holloway was not concerned despite having to leave from the eight post. "He is such a dominant horse." When asked about his strategy for the race Holloway added, "I just let it up to Brian to figure it out." Sears knew he was in good position as the race unfolded. "I was close enough to the front early on to make a move and everything worked out." Entry mate and NJ Classic winner Fresh Deck (George Brennan) took the early lead in the race and was ahead until Always A Virgin made his move prior to the half. Finishing second was Southwind Lynx driven by Tim Tetrick. Southwind Lynx was given a bye into the final based on being the leading money winner in 2007, including wins in two million dollar races this year, the Rooney and the Meadowlands Pace. Trainer George League, Jr. was going for his second consecutive Cane Pace, winning last year with Total Truth. Finishing third was Fresh Deck, while Tiber Hanover (Jack Baggitt, Jr.) Was fourth. Always a Virgin rewarded supporters with a payout of \$3.60, 2.60, 2.10.

In the \$144,325 Shady Daisy, Tim Tetrick guided Southwind Tempo to victory, tying the track record for 3 year olds pacing fillies with a time of 1:53.0. The win was the 14<sup>th</sup> in 17 starts for the Steve Elliot trained filly.

In the other major stakes race, Truponder with John Campbell won the \$125,500 Battle for Freehold for two year olds. Shoot first (Tim Tetrick) was second while Mr. Nice Guy (George Brennan) finished third.

### HAMBLETONIAN DAY SURPASSES \$8 MILLION FOR SEVENTH STRAIGHT YEAR

Fueled by record overseas wagering, the 2007 Hambletonian Day card produced a total handle of \$8,219,779, the third highest in harness racing history. The figure represented a 1.5 percent increase over the 2006 Hambletonian Day handle of \$8,069,924. The all-time high of \$9,015,019 was set in 2005. The total handle on the Hambletonian race itself, won by Donato Hanover, was \$1,622,786, the most money ever bet in a single harness race.

Scandinavian wagering was up significantly over the previous year for the five-race simulcast that included the Hambletonian, Hambletonian Oaks and Nat Ray. Both the Hambletonian [Adrian Chip] and Nat Ray [Jaded] drew Swedish contenders. The total handle from the Norway/Sweden/Denmark pool was \$438,344 [US], up 97% from the \$221,966 wagered last year.

## ANY GIVEN SATURDAY SCORES SMASHING VICTORY IN HASKELL OVER HARD SPUN, CURLIN; BETTING RECORDS SET AT MONMOUTH

Any Given Saturday put himself squarely in the championship picture on Sunday at Monmouth park as he scored a sensational victory over Hard Spun and Curlin in the 40<sup>th</sup> running of the \$1 million Haskell Invitational presented by Vonage (G1). With Garrett Gomez riding the perfect tactical race, Any Given Saturday rolled home by four and half lengths over Hard Spun, with Preakness winner Curlin, the 9-10 favorite, a head farther back in third. It was the second straight Haskell victory for Todd Pletcher, the nation's leading trainer, and Winstar Farm, which owns the winner in partnership with Padua Stables. They took last year's running with Bluegrass Cat.

An enthusiastic crowd of 43,106-fifth largest in track history was on hand in perfect summer weather, and contributed to record wagering on the day. An all time New Jersey high of \$14,122,636 was bet on Monmouth's 14 race program, and wagering on the Haskell hit a record \$3,734,404. The total wagering easily surpassed the previous all-time state high of \$12,845,920 set last year, and Haskell betting rose to a record level from the 2003 mark of \$3,726,562. "Everything exceeded our expectations," said Dennis Dowd, Senior Vice-president of Racing for the New Jersey Sports and Exposition Authority, which owns and operates Monmouth Park and the Meadowlands. "Not only did we have spectacular weather, but a tremendous crowd, and a great racing card. If today is any indication of what lies ahead, we're in very, very good shape for the rest of the meet, the Breeder's Cup and beyond."

Any Given Saturday, a colt by Distorted Humor - Weekend in Indy, by A.P. Indy, raced the mile and an eighth over a fast main track in 1:48.35 and paid \$5.60, \$4 and \$2.10 across the board as the second choice in the field of seven. Hard spun, the Kentucky Derby second place finisher who went off at odds of \$4.80-1, paid \$5 to place and \$2.10 to show and completed the \$24.20 exacta. Any Given Saturday ran himself right into 3-year-old championship consideration, a position he could cement with a victory in the \$5 million Breeders' Cup Classic powered by Dodge that will run a Monmouth Park on October 27<sup>th</sup>. "The way he ran today," Pletcher said, "the Breeders' Cup Classic at Monmouth is now our goal. We'll work out his schedule to get to the Breeders' Cup. "Using Curlin and Hard Spun as how you judge the 3 year old, he beat them convincingly today," Pletcher said. "Obviously, he's as good as any 3 year old in the crop."

The race unfolded like many thought it would, with Cable Boy grabbing the early lead and Hard Spun settling in behind. Gomez placed Any Given Saturday on the rail heading into the first turn, and bided his time until the stretch turn. Hard Spun made the first move to go by Cable Boy at the quarter-pole, but Any Given Saturday swung out three wide and cruised past Hard Spun as Cable Boy retreated. Curlin made a late move, but could not get past Hard Spun the final sixteenth of a mile. "It really all went to plan," Gomez said. "I saw Xchanger and Curlin make early moves and I was still sitting on the inside, at the quarter pole I angled out to come after the leaders." Imawildandcrazyguy closed to be fourth, three and a half lengths behind Curlin and four lengths in front of Cable Boy, who tired from his early pacesetting efforts. Xchanger was nearly four lengths farther back, and two lengths in front of Reata's Shadow who trailed throughout.

**NEW JERSEY LIVE AND SIMULCASTING REPORTS**  
**GROSS HANDLE SUMMARY**  
**2007**

THRU 12/31/07		RACING DAYS		GROSS HANDLE		OUT-OF-STATE GENERATED		N.J. HANDLE		ON-TRACK LIVE		TO N/T RACKS		TO A.C.		TO A.C.H.I.		TO F.R.A.		TO M.D.L.S.		TO M.P.		ON-TRACK ATTENDANCE	
PERIOD	DAYS	HANDLE		GENERATED		HANDLE		LIVE		N/T RACKS		A.C.		A.C.H.I.		F.R.A.		M.D.L.S.		M.P.		ATTENDANCE			
<b>T-BRED TRACK</b>																									
ACRA	Apr 26 to May 2 3	4	731,283	0	731,283	731,283	0	10,334,689	1,979,167	0	116,704	0	0	0	0	0	0	0	0	0	0	0	0	0	17,239
M.D.L.S	8/03 thru 11/10	41	57,353,990	45,040,134	12,313,856	63,638,101	11,148,615	794,558	0	595,995	0	1,266,488	0	0	0	0	0	0	0	0	0	0	0	0	131,275
M.P	5/12 thru 10/27	79	370,137,290	295,350,568	74,786,712	63,638,101	11,148,615	794,558	0	700,500	0	9,663,557	0	0	0	0	0	0	0	0	0	0	0	0	755,916
<b>SUB-TOTAL (T)</b>		<b>124</b>	<b>\$428,222,553</b>	<b>\$340,390,702</b>	<b>\$87,831,851</b>	<b>\$74,704,073</b>	<b>\$13,127,792</b>	<b>\$901,261</b>	<b>\$0</b>	<b>\$1,226,485</b>	<b>\$0,663,557</b>	<b>\$1,266,488</b>	<b>\$0</b>	<b>\$0</b>	<b>\$0</b>	<b>\$0</b>	<b>\$0</b>	<b>\$0</b>	<b>\$0</b>	<b>\$0</b>	<b>\$0</b>	<b>\$0</b>	<b>\$0</b>	<b>\$0</b>	<b>904,430</b>
<b>HARNESS TRACK</b>																									
ACHI	1/1 thru 6/09	98	61,898,076	43,813,337	18,084,739	11,894,814	6,189,925	205,092	0	0	0	0	0	0	0	0	0	0	0	0	0	0	0	0	132,001
F.R.A	8/09 thru 12/31	92	56,859,942	40,632,911	16,227,032	10,957,367	5,269,664	166,316	0	0	0	0	0	0	0	0	0	0	0	0	0	0	0	0	119,641
M.D.L.S	1ms- 8/04 & 11/06- 12/29	147	329,699,822	254,227,954	75,471,868	64,492,553	10,979,315	521,401	0	0	0	0	0	0	0	0	0	0	0	0	0	0	0	0	549,127
<b>SUB-TOTAL (H)</b>		<b>337</b>	<b>\$448,457,840</b>	<b>\$338,674,202</b>	<b>\$109,783,639</b>	<b>\$87,344,734</b>	<b>\$22,439,904</b>	<b>\$893,309</b>	<b>\$0</b>	<b>\$2,432,545</b>	<b>\$0,042,832</b>	<b>\$4,859,585</b>	<b>\$0</b>	<b>\$0</b>	<b>\$0</b>	<b>\$0</b>	<b>\$0</b>	<b>\$0</b>	<b>\$0</b>	<b>\$0</b>	<b>\$0</b>	<b>\$0</b>	<b>\$0</b>	<b>\$0</b>	<b>800,769</b>
<b>TOTAL LIVE-07</b>		<b>461</b>	<b>\$876,680,393</b>	<b>\$679,064,904</b>	<b>\$197,615,490</b>	<b>\$162,048,807</b>	<b>\$35,566,696</b>	<b>\$1,794,570</b>	<b>\$5,200,633</b>	<b>\$3,729,040</b>	<b>\$18,706,390</b>	<b>\$6,136,052</b>	<b>\$0</b>	<b>\$0</b>	<b>\$0</b>	<b>\$0</b>	<b>\$0</b>	<b>\$0</b>	<b>\$0</b>	<b>\$0</b>	<b>\$0</b>	<b>\$0</b>	<b>\$0</b>	<b>\$0</b>	<b>1,705,199</b>
<b>OUT-OF-STATE SIGNAL RECEIVED</b>																									
ACHI (H) L	1/1 thru 6/09	3,559	47,653,285	0	47,653,285	0	0	0	0	0	0	0	0	0	0	0	0	0	0	0	0	0	0	0	0
ACRA (T)	1/1 thru 4/25	1,462	6,095,423	0	6,095,423	0	0	0	0	0	0	0	0	0	0	0	0	0	0	0	0	0	0	0	0
ACRA (T) L	Apr 26 to May 2 3	1,072	3,959,080	0	3,959,080	0	0	0	0	0	0	0	0	0	0	0	0	0	0	0	0	0	0	0	0
ACRA (T)	6/05 thru 10/31	3,925	11,717,016	0	11,717,016	0	0	0	0	0	0	0	0	0	0	0	0	0	0	0	0	0	0	0	0
<b>ACRA TOTAL</b>		<b>6,459</b>	<b>21,771,519</b>	<b>0</b>	<b>21,771,519</b>	<b>0</b>	<b>0</b>	<b>0</b>	<b>0</b>	<b>0</b>	<b>0</b>	<b>0</b>	<b>0</b>	<b>0</b>	<b>0</b>	<b>0</b>	<b>0</b>	<b>0</b>	<b>0</b>	<b>0</b>	<b>0</b>	<b>0</b>	<b>0</b>	<b>0</b>	<b>0</b>
F.R.A (H) L	8/09 thru 7/31	1,401	12,946,366	0	12,946,366	0	0	0	0	0	0	0	0	0	0	0	0	0	0	0	0	0	0	0	0
F.R.A (H) L	8/09 thru 12/31	3,817	39,431,613	0	39,431,613	0	0	0	0	0	0	0	0	0	0	0	0	0	0	0	0	0	0	0	0
<b>F.R.A TOTAL</b>		<b>5,218</b>	<b>52,377,979</b>	<b>0</b>	<b>52,377,979</b>	<b>0</b>	<b>0</b>	<b>0</b>	<b>0</b>	<b>0</b>	<b>0</b>	<b>0</b>	<b>0</b>	<b>0</b>	<b>0</b>	<b>0</b>	<b>0</b>	<b>0</b>	<b>0</b>	<b>0</b>	<b>0</b>	<b>0</b>	<b>0</b>	<b>0</b>	<b>0</b>
M.D.L.S (H) L	1ms- 8/04 & 11/06- 12/29	5,620	231,511,921	0	231,511,921	0	0	0	0	0	0	0	0	0	0	0	0	0	0	0	0	0	0	0	0
M.D.L.S (H)	12/12 thru 12/31	0	0	0	0	0	0	0	0	0	0	0	0	0	0	0	0	0	0	0	0	0	0	0	0
<b>TOTAL (H)</b>		<b>5,620</b>	<b>231,511,921</b>	<b>0</b>	<b>231,511,921</b>	<b>0</b>	<b>0</b>	<b>0</b>	<b>0</b>	<b>0</b>	<b>0</b>	<b>0</b>	<b>0</b>	<b>0</b>	<b>0</b>	<b>0</b>	<b>0</b>	<b>0</b>	<b>0</b>	<b>0</b>	<b>0</b>	<b>0</b>	<b>0</b>	<b>0</b>	<b>0</b>
M.D.L.S (T) L	8/13 thru 9/23	565	19,196,001	0	19,196,001	0	0	0	0	0	0	0	0	0	0	0	0	0	0	0	0	0	0	0	0
M.D.L.S (T) L	8/08 thru 11/10	1,512	55,312,764	0	55,312,764	0	0	0	0	0	0	0	0	0	0	0	0	0	0	0	0	0	0	0	0
<b>TOTAL (T)</b>		<b>2,077</b>	<b>74,508,765</b>	<b>0</b>	<b>74,508,765</b>	<b>0</b>	<b>0</b>	<b>0</b>	<b>0</b>	<b>0</b>	<b>0</b>	<b>0</b>	<b>0</b>	<b>0</b>	<b>0</b>	<b>0</b>	<b>0</b>	<b>0</b>	<b>0</b>	<b>0</b>	<b>0</b>	<b>0</b>	<b>0</b>	<b>0</b>	<b>0</b>
<b>MDL TOTAL</b>		<b>19,317</b>	<b>306,020,687</b>	<b>0</b>	<b>306,020,687</b>	<b>0</b>	<b>0</b>	<b>0</b>	<b>0</b>	<b>0</b>	<b>0</b>	<b>0</b>	<b>0</b>	<b>0</b>	<b>0</b>	<b>0</b>	<b>0</b>	<b>0</b>	<b>0</b>	<b>0</b>	<b>0</b>	<b>0</b>	<b>0</b>	<b>0</b>	<b>0</b>
M.P (T)	1/01 thru 6/28	2,003	33,817,112	0	33,817,112	0	0	0	0	0	0	0	0	0	0	0	0	0	0	0	0	0	0	0	0
M.P (T) L	6/28 thru 8/06	3,398	76,079,780	0	76,079,780	0	0	0	0	0	0	0	0	0	0	0	0	0	0	0	0	0	0	0	0
M.P (T)	8/06 thru 10/31	1,060	16,647,414	0	16,647,414	0	0	0	0	0	0	0	0	0	0	0	0	0	0	0	0	0	0	0	0
<b>MP TOTAL</b>		<b>6,461</b>	<b>126,544,305</b>	<b>0</b>	<b>126,544,305</b>	<b>0</b>	<b>0</b>	<b>0</b>	<b>0</b>	<b>0</b>	<b>0</b>	<b>0</b>	<b>0</b>	<b>0</b>	<b>0</b>	<b>0</b>	<b>0</b>	<b>0</b>	<b>0</b>	<b>0</b>	<b>0</b>	<b>0</b>	<b>0</b>	<b>0</b>	<b>0</b>
<b>TOTAL SIGNAL RECD</b>		<b>29,394</b>	<b>\$554,367,774</b>	<b>\$0</b>	<b>\$554,367,774</b>	<b>\$0</b>	<b>\$0</b>	<b>\$0</b>	<b>\$0</b>	<b>\$0</b>	<b>\$0</b>	<b>\$0</b>	<b>\$0</b>	<b>\$0</b>	<b>\$0</b>	<b>\$0</b>	<b>\$0</b>	<b>\$0</b>	<b>\$0</b>	<b>\$0</b>	<b>\$0</b>	<b>\$0</b>	<b>\$0</b>	<b>\$0</b>	<b>0</b>
<b>TOTAL 2007</b>		<b>29,955</b>	<b>\$1,431,048,167</b>	<b>\$679,064,904</b>	<b>\$731,983,264</b>	<b>\$162,048,807</b>	<b>\$35,566,696</b>	<b>\$1,794,570</b>	<b>\$5,200,633</b>	<b>\$3,729,040</b>	<b>\$18,706,390</b>	<b>\$6,136,052</b>	<b>\$0</b>	<b>\$0</b>	<b>\$0</b>	<b>\$0</b>	<b>\$0</b>	<b>\$0</b>	<b>\$0</b>	<b>\$0</b>	<b>\$0</b>	<b>\$0</b>	<b>\$0</b>	<b>\$0</b>	<b>1,705,199</b>

L - Generated during the period of Live Racing

FIGURES THRU: 12/31/07



**New Jersey Racing Commission**

**5-Year Comparison New Jersey Thoroughbred Tracks**

	2003 - 4 NIGHTS	2004 - 4 NIGHTS	2005- 4 NIGHTS	2006- 4 NIGHTS	2007- 4 NIGHTS
<b>ATLANTIC CITY RACING ASSOCIATION</b>					
Total Mutuel Handle	\$335,350	\$458,868	\$412,528	\$692,856	\$731,283
Daily Average Mutuel Handle	\$83,838	\$114,717	\$103,132	\$173,214	\$182,821
Total Attendance	4,396	11,639	8,463	16,344	17,239
Daily Average Attendance	1,099	2,910	2,116	4,086	4,310
<b>MONMOUTH PARK JOCKEY CLUB</b>	<b>2003 - 92 DAYS</b>	<b>2004 - 72 DAYS</b>	<b>2005- 90 NIGHTS</b>	<b>2006- 87 NIGHTS</b>	<b>2007- 79 NIGHTS</b>
Total Mutuel Handle	\$74,732,841	\$66,059,722	\$72,599,780	\$63,138,541	\$74,786,712
Daily Average Mutuel Handle	\$812,313	\$917,496	\$806,664	\$725,730	\$946,667
Total Attendance	716,129	715,958	797,262	712,782	755,916
Daily Average Attendance	7,784	9,944	8,858	8,193	9,569
<b>NJ SPORTS &amp; EXPOSITION AUTHORITY</b>	<b>2003 - 28 NIGHTS</b>	<b>2004 - 48 NIGHTS</b>	<b>2005- 27 NIGHTS</b>	<b>2006- 33 NIGHTS</b>	<b>2007- 41 NIGHTS</b>
Total Mutuel Handle	\$13,429,734	\$25,264,631	\$10,923,873	\$10,407,263	\$12,313,856
Daily Average Mutuel Handle	\$479,633	\$526,346	\$404,588	\$315,372	\$300,338
Total Attendance	117,084	221,174	109,582	115,460	131,275
Daily Average Attendance	4,182	4,608	4,059	3,499	3,202

**5-Year Comparison New Jersey Harness Tracks**

	2003 - 96 DAYS	2004 - 93 DAYS	2005- 96 NIGHTS	2006- 95 NIGHTS	2007- 92 NIGHTS
<b>FREEHOLD RACING ASSOCIATION</b>					
Total Mutuel Handle	\$22,628,852	\$21,474,274	\$21,868,445	\$18,586,173	\$16,227,032
Daily Average Mutuel Handle	\$235,717	\$230,906	\$227,796	\$195,644	\$176,381
Total Attendance	166,023	154,459	131,884	126,948	119,641
Daily Average Attendance	1,729	1,661	1,374	1,336	1,300
<b>ATLANTIC CITY HARNESS, INC.</b>	<b>2003 - 92 DAYS</b>	<b>2004 - 96 DAYS</b>	<b>2005- 95 NIGHTS</b>	<b>2006- 97 NIGHTS</b>	<b>2007- 98 NIGHTS</b>
Total Mutuel Handle	\$23,273,848	\$22,893,955	\$21,279,817	\$22,231,323	\$18,084,739
Daily Average Mutuel Handle	\$252,977	\$238,479	\$223,998	\$229,189	\$184,538
Total Attendance	138,936	142,707	136,329	134,973	132,001
Daily Average Attendance	1,510	1,487	1,435	1,391	1,347
<b>NJ SPORTS &amp; EXPOSITION AUTHORITY</b>	<b>2003 - 165 NIGHTS</b>	<b>2004 - 166 NIGHTS</b>	<b>2005- 157 NIGHTS</b>	<b>2006- 157 NIGHTS</b>	<b>2007- 147 NIGHTS</b>
Total Mutuel Handle	\$136,668,381	\$131,968,012	\$115,358,727	\$99,216,761	\$75,471,868
Daily Average Mutuel Handle	\$828,293	\$794,988	\$734,769	\$631,954	\$513,414
Total Attendance	753,400	768,970	675,270	644,859	549,127
Daily Average Attendance	4,566	4,632	4,301	4,107	3,736
<b>TOTALS USED IN CHARTS==&gt;</b>					
NEW JERSEY TRACK HANDLE	\$271,069,006	\$268,119,462	\$242,443,170	\$214,272,917	\$197,615,490
ON TRACK ATTENDANCE	1,895,968	2,014,907	1,858,790	1,751,366	1,705,199

**NOTE: 2007 figures through 12-31-07**

## New Jersey Track Handle Statewide

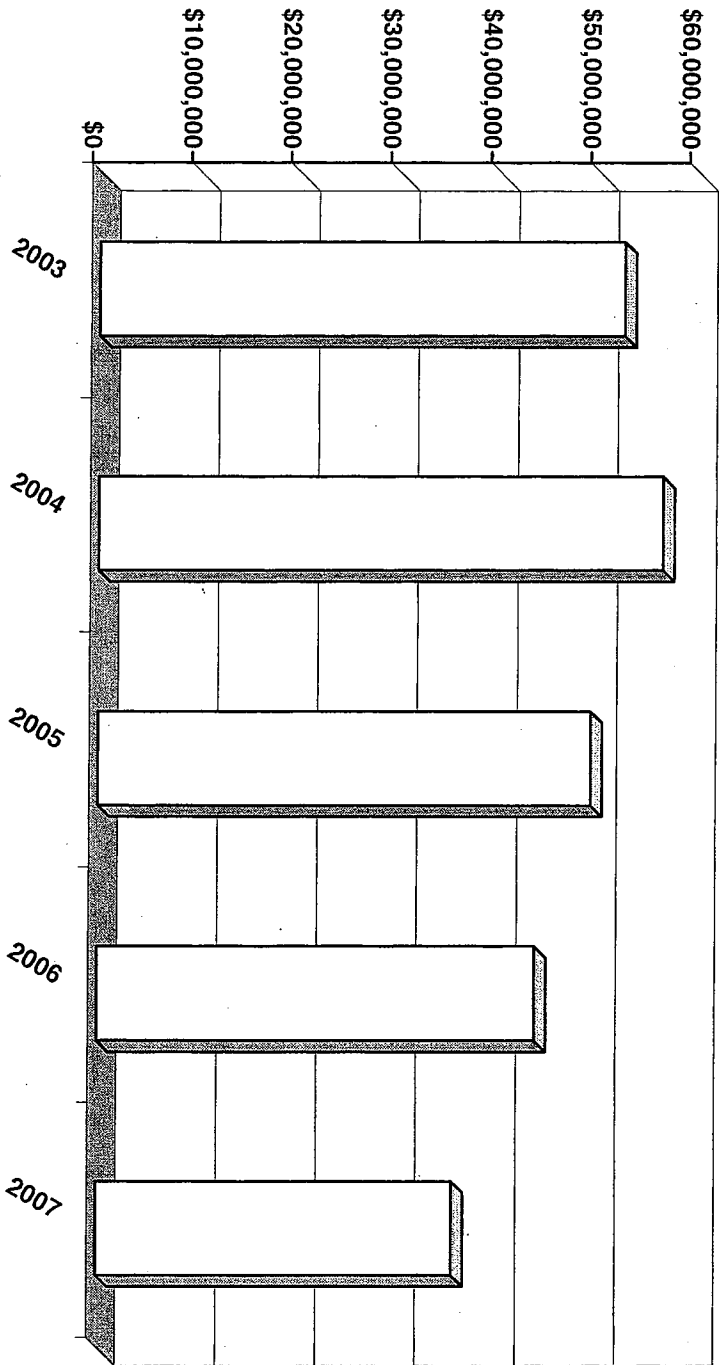
	2003	2004	2005	2006	2007
Atlantic City Harness	\$23,273,848	\$22,893,955	\$21,279,817	\$22,231,323	\$18,084,739
Atlantic City Racecourse	335,350	458,868	412,528	692,856	731,283
Freehold Raceway	22,628,852	21,474,274	21,868,445	18,586,173	16,227,032
Garden State Park	0	0	0	0	0
Meadowlands Racetrack	150,098,115	157,232,643	126,282,600	109,624,024	87,785,724
Mommouth Park	74,732,841	66,059,722	72,599,780	63,138,541	74,786,712
<b>TOTAL</b>	<b>\$271,069,006</b>	<b>\$268,119,462</b>	<b>\$242,443,170</b>	<b>\$214,272,917</b>	<b>\$197,615,490</b>

## Intrastate Simulcasting Handle

	2003	2004	2005	2006	2007
Atlantic City Harness	\$8,725,321	\$8,489,397	\$8,322,859	\$8,505,170	\$6,189,925
Atlantic City Racecourse	0	0	0	0	0
Freehold Raceway	8,417,439	7,543,508	7,723,531	6,444,582	5,269,664
Garden State Park	0	0	0	0	0
Meadowlands Racetrack	22,308,816	29,407,272	18,683,258	15,727,571	12,958,482
Monmouth Park	13,195,207	11,168,347	14,633,030	13,094,271	11,148,615
<b>TOTAL</b>	<b>\$52,646,783</b>	<b>\$56,608,524</b>	<b>\$49,362,678</b>	<b>\$43,771,594</b>	<b>\$35,566,686</b>

# Intrastate Simulcasting Handle

	2003	2004	2005	2006	2007
<b>TOTAL</b>	<b>\$52,646,783</b>	<b>\$56,608,524</b>	<b>\$49,362,678</b>	<b>\$43,771,594</b>	<b>\$35,566,686</b>

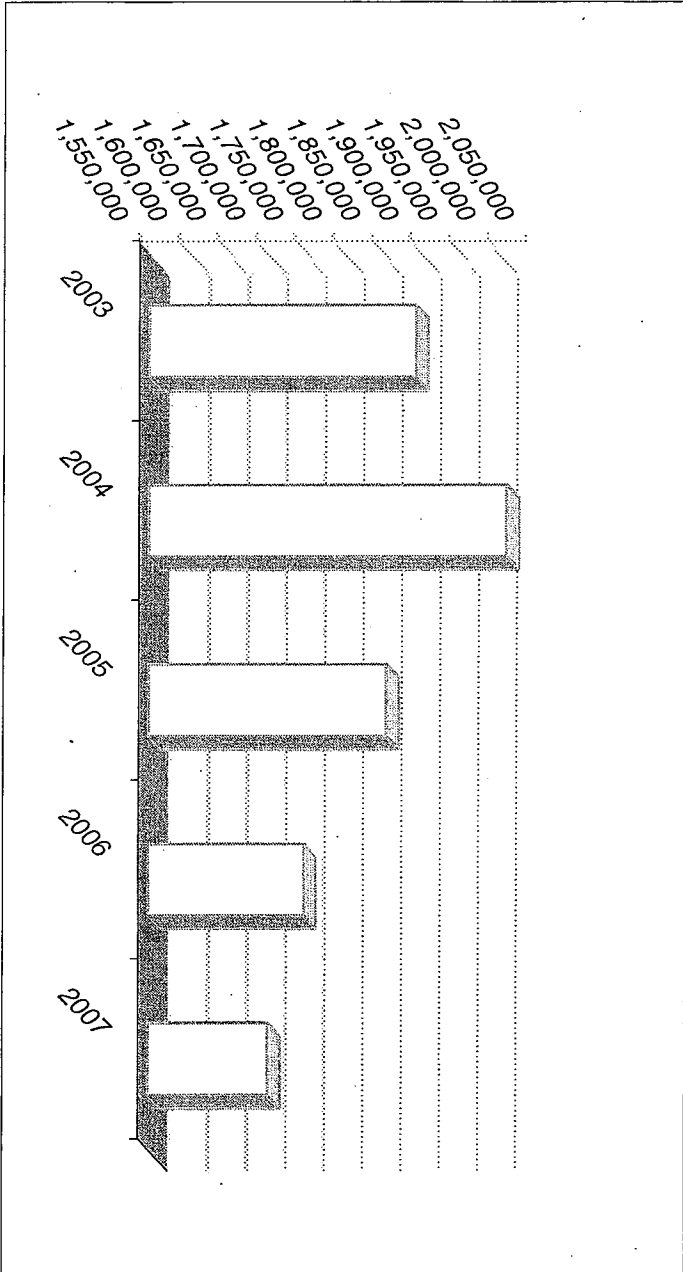


## Statewide On Track Attendance

	2003	2004	2005	2006	2007
Atlantic City Harness	138,936	142,707	136,329	134,973	132,001
Atlantic City Racecourse	4,396	11,639	8,463	16,344	17,239
Freehold Raceway	166,023	154,459	131,884	126,948	119,641
Garden State Park	0	0	0	0	0
Meadowlands Racetrack	870,484	990,144	784,852	760,349	680,402
Monmouth Park	716,129	715,958	797,262	712,782	755,916
<b>TOTAL</b>	<b>1,895,968</b>	<b>2,014,907</b>	<b>1,858,790</b>	<b>1,751,396</b>	<b>1,705,199</b>

# Statewide On Track Attendance

	2003	2004	2005	2006	2007
<b>TOTAL</b>	<b>1,895,968</b>	<b>2,014,907</b>	<b>1,858,790</b>	<b>1,751,396</b>	<b>1,705,199</b>

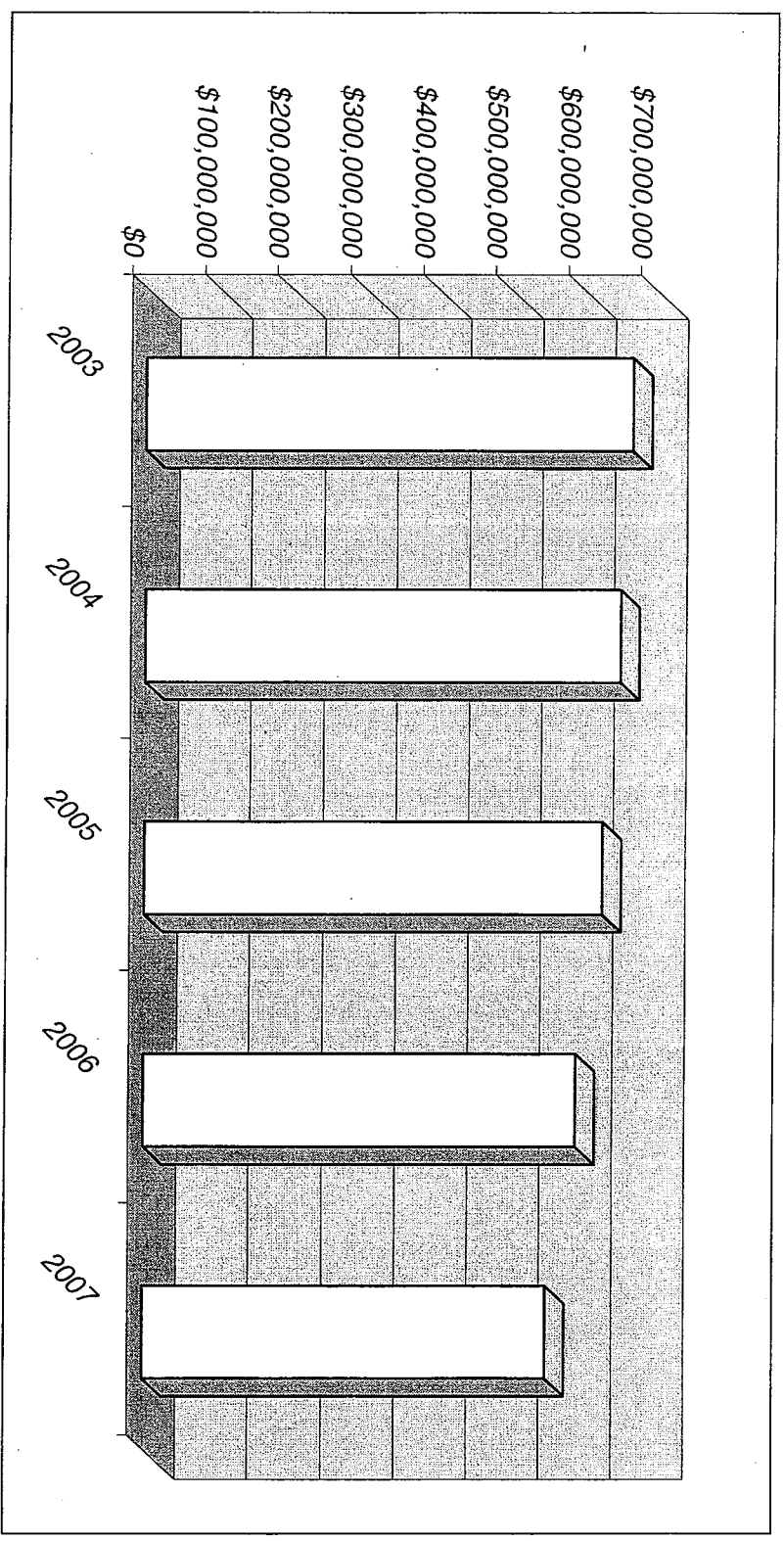


## Interstate Simulcasting Handle Received

	2003	2004	2005	2006	2007
Atlantic City Harness	\$51,519,485	\$54,062,440	\$49,493,491	\$45,096,973	\$47,653,285
Atlantic City Racecourse	30,802,066	32,211,107	29,882,145	26,197,565	21,771,519
Freehold Raceway	72,269,916	69,190,209	64,578,419	57,942,447	52,377,979
Garden State Park	0	0	0	0	0
Meadowlands Racetrack	377,510,800	365,207,387	354,310,609	337,530,702	306,020,687
Monmouth Park	138,999,781	134,333,942	132,661,663	128,765,538	126,544,305
<b>TOTAL</b>	<b>\$671,102,048</b>	<b>\$655,005,085</b>	<b>\$630,926,327</b>	<b>\$595,533,225</b>	<b>\$554,367,775</b>

# Interstate Simulcasting Handle Received

TOTAL	2003	2004	2005	2006	2007
	\$671,102,048	\$655,005,085	\$630,926,327	\$595,533,225	\$554,367,775





**NEW JERSEY RACING COMMISSION**  
**SUMMARY OF COMMINGLE HANDLE BY TRACK**  
11/07 thru 12/31/07

OUT-OF-STATE SIGNAL RECEIVED	ATLANTIC CITY RACING ASSOC.	FREEHOLD RACEWAY		MEADOWLANDS		MONMOUTH PARK T-BRED	T O T A L RECEIPTS
		A C H I	FREEHOLD	STANHAMWOOD	THORNTONWOOD		
ADIOS @ LADBROKE	\$1,219		\$35,561		\$37,565	\$4,333	\$78,678
AQUEDUCT	1,336,315	4,730,352	2,459,408	16,891,715	1,724,297	9,394,078	36,536,165
ARAPAHOE			142	343,021			343,163
ARLINGTON PARK	438,051	323,719	1,008,815	3,764,076	1,657,867	3,938,938	11,131,466
AT THE RACING		12,129	20,746	2,800			35,675
ATR IRISH RACING		14,797	25,265	2,125			42,187
AUSTRALIAN RACE				722,395			902,664
BALMORAL	151,094	835,780	901,019	3,670,087	1,557,182	298,992	7,414,154
BAY MEADOWS	168,423	374,449	266,834	1,281,016	1,803,404	873,427	4,267,553
BELMONT	1,368,024	2,301,812	4,099,013	12,181,493	5,407,817	10,549,831	41,907,990
BUELAH & RIVERDOWN	325,052	827,357	305,382	2,763,627	235,767	902,437	5,359,622
BUFFALO RACEWAY		110,335	49,920	116,027		5,886	282,168
CAL-EXPO		22,950	21,009	1,589,976	455,548	79,145	2,188,627
CALDER	467,094	525,402	1,239,040	3,346,060	2,260,640	3,583,532	11,421,768
CANTERBURY		1,310	31,846				33,156
CHARLES TOWN	427,897	769,225	938,441	5,856,477	1,979,298	1,909,195	11,880,533
CHESTER DOWNS	138,758		1,627,692	543,269	987,683	311,827	3,609,229
CHURCHILL	862,674	1,731,437	1,282,148	8,515,864	984,598	6,482,833	19,859,553
COLONIAL DOWNS	147,488		429,266	885,869	483,013	947,313	2,892,949
DELAWARE PK	720,654	499,519	1,653,979	3,255,925	2,510,053	3,454,829	12,094,959
DELMAR	247,808		829,222	1,303,290	1,841,512	2,538,570	6,760,401
DELTA DOWNS	38,623	417,960	202,556	2,909,537	374,290	626,042	4,569,008
DERBY FUTURE	7,349	22,725		53,090		28,872	112,036
DOVER DOWNS	272,036	1,220,095	470,460	3,490,748	195,956	331,010	5,980,305
DUBAI	9,818	25,468		131,191		66,607	233,084
DUQUIN			45,220		33,610		78,830
ELLIS PARK	127,738		448,052	850,743	792,950	1,289,349	3,508,832
EMERALD DOWNS		44,453	112,252				156,705
EVANGELINE	190,116	383,975	445,128	3,834,580	551,128	1,042,581	6,447,508
FAIRGROUND	544,630	1,241,388	447,782	5,225,704	258,019	2,690,191	10,149,695
FAIRMOUNT	4	61,746	41,516		77,266	79,140	517,692
FAIRPLEX	41,912		151,778		672,606	334,262	1,200,557
FINGER LAKES	273,154	221,914	832,600	1,498,383	1,178,143	1,107,085	5,111,277
FLAMBORO		103,448	129,421				232,869
FORT ERIE RACETRACK	98,972	45,504	245,836	560,744	533,844	347,217	1,832,117
FRASIER DOWNS		23,097	24,138				47,235
FRENCH RACING			4,455				4,455
GOLDEN GATE	216,782	523,105	345,143	2,972,986	153,804	1,178,884	5,390,704
GREAT LAKES	68,447	22,494	110,841	309,979	498,779	169,591	1,180,130
GULFSTREAM	951,834	3,347,184		10,201,097		5,798,600	20,388,715
HAMBO/HASKELL	39		275		6,800	2,827	9,941
HARRINGTON	110,484	280,160	557,985	892,699	740,510	124,824	2,706,672
HAWTHORNE	409,170	564,121	1,058,883	4,234,911	1,368,605	1,986,405	9,622,095
HAZEL PARK	28,352	38,052	38,052	306,411	170,921	36,456	681,380
HOLLYWOOD	458,583	673,110	1,049,162	8,188,391	339,065	4,615,900	15,324,210
HOOSIER PARK	182,336	611,457	605,407	2,572,184	1,258,424	591,243	5,821,051
INDIA DOWNS	54,909	219,706	854,982	1,053,643	833,730	299,767	3,316,737
KEENELAND	378,110	770,939	604,773	2,323,205	1,720,184	2,749,763	8,546,974
KENTUCKY	8,221		26,787		130,517	42,978	208,483
LAUREL	854,232	1,726,785	1,346,429	5,793,433	2,770,334	3,681,288	16,172,501
LEBANON RACEWAY		2,812	6,089				9,501
LITTLE BROWN JUG	5,680		58,569		113,452		177,701
LONE STAR PARK	110,993	225,780	242,090	2,585,203	90,160	726,659	3,980,885
LOS ALAMITOS				375,051	35,487	11,589	422,127
LOUISIANA	234,972	296,686	687,488	1,979,119	1,633,670	1,410,390	6,242,324
MAYWOOD	92,797	517,953	340,601	2,687,660	900,108	213,488	4,752,606
MEADOWS	267,332	674,795	580,166	2,723,846	213,951	386,476	4,846,566
MOHAWK	125,779	150,334	792,362	2,317,778	1,353,884	225,453	4,905,590
MONTAINEER	498,991	730,311	964,251	5,901,560	2,017,997	976,548	11,089,658
MONTICELLO RACEWAY	306,387	1,698,412	1,617,668	4,825,025	1,428,970	1,085,260	10,961,722
NORTHERN CALIF. FAIR	2		218,496	1,075,912	243,130	468,595	2,006,144
NORTHFIELD	364,294	997,878	1,082,062	5,535,142	1,516,755	483,813	9,979,944
NORTHVILLE		148,688	90,442		210,751		449,881
OAKLAWN		652,098		2,504,571		1,042,175	4,108,844
OAKS DERBY DOUBLE	188,526		548,344		2,196,681	1,297,142	4,221,320
OAK TREE @ SANTA	170,153		82,625	74,015	20,972		185,712
OCEAN DOWNS			504,665	3,569,456	1,513,464	1,195,631	7,535,383
PENN NATIONAL	351,523	400,644	2,251,066	7,221,848	2,153,861	5,030,288	20,191,548
PHILA PARK	1,577,020	1,957,465		2,972,853		1,765,885	6,064,512
PIMLICO	363,400	962,375		397,854	208,379	62,789	947,679
PLAINRIDGE		78,611	200,046	1,189,782	922,388	284,434	4,006,297
POCONO	93,825	440,898	1,074,970	640,895	23,596	53,611	1,094,035
POMPANO	48,918	196,098	130,917	845,337	59,637	191,130	1,292,596
PORTLAND MEADOWS		134,973	61,519				936,637
PRAIRIE MEADOWS		30,920	28,155	500,780	266,128	110,656	20,529
PREMIER PICK 4-OAK	882	3,921		10,497		5,229	20,529
PRESQUE ISLE DOWNS	35,669		85,613		252,514	75,599	449,395
RACEWAY PARK		29,817	64,397				94,214
RED MILE	5,732		635,247		672,444	22,317	1,335,789
REMMINGTON	8,055	72,714	205,679	272,973	786,573	385,492	1,731,485
RETAMA PARK	36,431		177,249	101,457	1,140,742	238,151	1,703,029
RIVERDOWN	64,622	95,980	116,024	423,769	123,539	198,137	1,022,071
ROCKINGHAM		56,981	361,347	350,193	53,915	77,432	899,867
ROSECROFT	36,015	70,344	64,337	313,870	87,878	7,783	580,227
SAM HOUSTON	131,155	481,771	109,686	3,477,556		533,773	4,733,941
SANTA ANITA	557,830	1,969,855	130,673	9,404,556		3,314,337	15,377,250
SARATOGA	690,745	145,429	2,939,354	3,475,264	6,295,947	10,747,641	24,294,380
SCIOTO DOWNS	101	15,976	81,690	330,932	89,222	30,056	547,977
SOUTH AFRICAN RACE			51,983		11,905	28,233	92,121
SUFFOLK DOWNS	185,040	137,144	671,255	591,934	950,449	713,628	3,249,451
SUNLAND PARK	70,562	277,279	70,878	707,787		192,849	1,319,354
SWEDISH RACING	915,939	7,581	5,944	29,956	7,433	6,431	973,283
TAMPA BAY		3,117,444	310,864	8,755,364		3,588,851	15,772,523
THRISTLEDOWN	248,126	333,713	868,725	1,582,539	890,640	1,046,705	4,970,448
TIMINUM	12,000		59,227		110,717	78,294	260,238
TIOGA DOWNS		63,044	293,365	231,633	97,170	12,629	607,850
TROPICAL	323,644	65,634	1,209,111	2,276,175	904,752	1,822,238	6,601,553
TURF PARADISE	250,625	615,617	414,900	2,835,894	460,098	788,853	5,360,988
TURFWAY	371,952	862,090	498,114	4,387,972	932,574	1,719,711	8,772,412
U K RACING			8,561			2,193	10,754
VERNON DOWNS		25,074	54,258	179,024	101,790	14,524	375,070
WESTERN FAIR RACEWAY	25,824	75,580	39,610	560,574	45,697	1,540	723,001
WINDSOR	538,640	1,086,487	72,603	555,430	47,352	27,762	886,352
WOODBINE			1,173,505	7,446,414	2,474,554	2,162,798	14,882,398
WOODLAND			282,651				282,651
YAVAPAI	1,056	5,120	53,677				59,854
YONKERS	305,730	1,914,124	2,251,535	7,980,806	2,897,368	943,354	16,292,917
ZIA PARK	17,876		119,940	243,130	288,042	93,472	762,261
<b>TOTAL</b>	<b>\$21,771,519</b>	<b>\$47,653,285</b>	<b>\$52,377,977</b>	<b>\$231,511,921</b>	<b>\$74,508,765</b>	<b>\$126,544,305</b>	<b>554,367,771</b>

NEW JERSEY LIVE AND SIMULCASTING MEETS  
 COMMISSION DISTRIBUTION SUMMARY  
 2 0 0 7

TRACKS	FACE DAY	GROSS HANDLE	NET BREAKAGE	TRACK SETTLEMENT	PAYOUT	TOTAL COMMISSION	TRACK SHARE	PURSE SHARE	STATE SETTLE	CHARITY	SHE STAKES (HARNESS)	BREEDDEVLP (HARNESS)	BREEDSTALL (HARNESS)	BREEDDEVLP (T-BRED)	T.B.A. (T-BRED)	BACKSTRETCH BENEFIT	S.R.O.A. HEADTAX	WORKERS COMP	
																			SHARE
<b>T-BRED</b>																			
ACRA	4	731,292	4,232	0	586,396	140,654	79,620	50,466	0	3,632	0	0	0	0	366	6,569	0	0	0
MDLS	41	12,313,856	61,869	230,454	9,627,535	2,393,999	1,700,733	644,407	0	10,933	0	0	0	0	6,157	30,756	1,013	0	0
MP	79	74,786,716	360,687	2,937,816	56,884,294	14,604,019	10,403,671	3,877,760	0	97,672	0	0	0	0	37,393	181,997	5,585	0	14,481
SUB-TOTAL (T)	124	\$87,831,854	\$426,688	\$3,168,269	\$67,098,225	\$17,138,672	\$12,184,025	\$4,572,633	\$0	\$112,237	\$0	\$0	\$0	\$0	\$43,916	\$219,323	\$6,598	\$0	\$14,481
<b>HARNESS</b>																			
ACHI	98	\$18,084,739	\$97,581	\$0	\$14,568,653	\$3,775,161	\$1,782,178	\$1,830,448	\$0	\$6,860	\$117,729	\$6,239	\$10,399	\$0	\$0	\$0	\$1,671	\$19,638	\$0
FRA	92	16,227,032	84,410	0	12,826,342	3,380,185	1,894,884	1,638,513	0	7,501	105,581	5,598	9,331	0	0	0	1,473	17,304	0
MDLS	147	75,471,867	291,769	1,995,696	58,210,912	14,973,489	9,603,528	4,907,341	0	24,500	383,923	22,642	41,510	0	0	0	7,055	82,901	254,649
SUB-TOTAL (H)	337	\$100,783,637	\$473,760	\$1,995,696	\$85,605,907	\$22,128,835	\$12,880,590	\$8,270,302	\$0	\$38,360	\$607,233	\$34,479	\$61,239	\$0	\$0	\$0	\$10,199	\$119,842	\$254,649
TOTAL LIVE-2006	461	\$197,615,491	\$900,449	\$5,163,966	\$152,704,133	\$39,267,607	\$25,164,615	\$12,848,935	\$0	\$151,187	\$607,233	\$34,479	\$61,239	\$0	\$0	\$0	\$10,199	\$119,842	\$254,649
<b>OUT-OF-STATE HANDLE RECEIVED</b>																			
ACRA (T)	6,459	21,771,519	110,030	0	16,927,581	4,350,609	3,390,962	837,727	0	0	0	0	0	0	6,532	113,212	2,177	0	0
MDLS (T)	2,077	74,508,785	320,448	1,119,646	58,550,104	15,235,618	10,204,374	4,613,995	0	0	0	0	0	0	22,353	387,446	7,451	0	0
MP (T)	6,461	126,544,305	425,064	100,183,869	25,101,107	17,319,862	7,802,597	0	0	0	0	0	0	37,903	658,031	12,695	0	0	0
SUB-TOT (T)	14,997	222,824,589	856,442	1,119,646	175,661,554	44,687,335	30,915,198	12,524,318	0	0	0	0	0	0	66,847	1,158,689	22,283	0	0
ACHI (H)	3,659	47,653,285	206,550	843,171	36,712,674	9,894,966	7,121,133	2,541,867	0	0	144,630	14,296	12,282	0	0	0	4,766	55,993	0
FRA (H)	5,218	52,377,977	206,914	686,221	40,880,674	10,945,312	8,027,124	2,663,221	0	0	158,970	15,714	13,500	0	0	0	5,238	61,545	0
MDLS (H)	5,620	231,511,921	136,467	0	180,106,596	47,458,572	31,827,765	14,569,489	0	0	631,050	69,464	65,636	0	0	0	23,151	272,027	0
SUB-TOT (H)	14,997	331,543,183	549,832	1,529,392	257,699,944	68,298,850	46,976,023	19,774,578	0	0	934,650	99,464	91,418	0	0	0	33,154	389,564	0
TOTAL SIGNAL	29,394	\$554,367,772	\$1,406,574	\$2,649,038	\$433,361,498	\$112,966,185	\$77,891,220	\$32,298,936	\$0	\$0	\$924,650	\$99,464	\$91,418	\$0	\$0	\$0	\$66,847	\$1,158,689	\$0
TOTAL - 2007	29,855	\$751,983,283	\$2,306,822	\$7,813,003	\$586,065,630	\$152,233,691	\$103,065,835	\$45,147,831	\$0	\$151,187	\$1,541,883	\$133,943	\$152,657	\$110,764	\$1,378,011	\$72,175	\$509,406	\$14,481	\$355,661

Figures thru: DECEMBER 31

**NEW JERSEY RACING COMMISSION  
2007 CHARITY DAYS REVENUE**

<i>TRACK / DATE</i>	<i>BACKSTRECH BENEVOLENCE</i>	<i>DEVEPMENTALLY DISABLED</i>	<i>HORSE PARK OF NEW JERSEY</i>	<i>T O T A L CHARITY</i>
<b><i>A.C. Harness, Inc.</i></b>				
10-Mar-07			1,386.60	1,386.60
07-Apr-07		1,625.78		1,625.78
28-Apr-07	1,476.94			1,476.94
12-May-07		1,583.80		1,583.80
28-May-07		786.40		786.40
<b>SUB-TOTAL</b>	<b>\$1,476.94</b>	<b>\$3,995.98</b>	<b>\$1,386.60</b>	<b>\$6,859.52</b>
<b><i>Atlantic City Racing</i></b>				
25-Apr-07	797.03			797.03
26-Apr-07			768.08	768.08
02-May-07		967.88		967.88
03-May-07		1,099.17		1,099.17
<b>SUB-TOTAL</b>	<b>\$797.03</b>	<b>\$2,067.05</b>	<b>\$768.08</b>	<b>\$3,632.16</b>
<b><i>Freehold Raceway</i></b>				
18-Aug-07	1,590.39			1,590.39
03-Sep-07			1,820.22	1,820.22
22-Sep-07		1,509.25		1,509.25
08-Oct-07		788.45		788.45
27-Oct-07		1,792.39		1,792.39
<b>SUB-TOTAL</b>	<b>\$1,590.39</b>	<b>\$4,090.09</b>	<b>\$1,820.22</b>	<b>\$7,500.70</b>
<b><i>Meadowlands (H)</i></b>				
07-Apr-07		3,677.82		3,677.82
28-May-07		2,120.05		2,120.05
09-Jun-07	3,380.51			3,380.51
04-Jul-07		1,495.64		1,495.64
04-Aug-07			13,915.97	13,915.97
<b>SUB-TOTAL</b>	<b>\$3,380.51</b>	<b>\$7,293.51</b>	<b>\$13,915.97</b>	<b>\$24,589.99</b>
<b><i>Meadowlands (T)</i></b>				
03-Sep-07	2,827.57			2,827.57
06-Oct-07			1,984.20	1,984.20
20-Oct-07		1,891.85		1,891.85
27-Oct-07		1,871.58		1,871.58
10-Nov-07		2,357.46		2,357.46
<b>SUB-TOTAL</b>	<b>\$2,827.57</b>	<b>\$6,120.89</b>	<b>\$1,984.20</b>	<b>\$10,932.66</b>
<b><i>Monmouth Park</i></b>				
28-May-07	5,484.18			5,484.18
04-Jul-07		5,489.18		5,489.18
04-Aug-07		4,966.41		4,966.41
02-Sep-07			5,701.57	5,701.57
27-Oct-07		76,030.58		76,030.58
<b>SUB-TOTAL</b>	<b>\$5,484.18</b>	<b>\$86,486.17</b>	<b>\$5,701.57</b>	<b>\$97,671.92</b>
<b>CHARITY thru 1</b>	<b>\$15,556.62</b>	<b>\$110,053.69</b>	<b>\$25,576.64</b>	<b>\$151,186.95</b>

**New Jersey Racing Commission  
On-Track Handle & Attendance  
2007**

Meets	Racing Dates	Handle	Average Daily		
			Handle	Attendance	
<b>THOROUGHBRED</b>					
Atlantic City Racing Assoc.	4	\$731,283	\$182,821	17,239	4,310
Garden State Park	0	0	0	0	0
Meadowlands	41	10,334,689	252,066	131,275	3,202
Monmouth Park Jockey Club	79	63,638,101	805,546	755,916	9,569
<b>THOROUGHBRED TOTALS</b>	<b>124</b>	<b>\$74,704,073</b>		<b>904,430</b>	
<b>HARNNESS</b>					
Atlantic City Harness, Inc.	98	\$11,894,814	\$121,376	132,001	1,347
Freehold Raceway	92	10,957,367	119,102	119,641	1,300
Garden State Park	0	0	0	0	0
Meadowlands	147	64,492,553	438,725	549,127	3,736
<b>HARNNESS TOTALS</b>	<b>337</b>	<b>\$87,344,734</b>		<b>800,769</b>	
<b>Total On-track</b>	<b>461</b>	<b>\$162,048,807</b>			
<b>Total NJ Track Simulcasting</b>		<b>\$35,566,686</b>			
<b>Gross New Jersey Track Handle</b>		<b>\$197,615,493</b>	<b>Total On-Track Attendance</b>	<b>1,705,199</b>	

**New Jersey Racing Commission  
Inter-State Wagering  
2007**

Meet	Racing Dates	Handle
<b>THOROUGHBRED</b>		
Monmouth Park Jockey Club	79	\$126,544,305
Atlantic City Racing Assoc.	4	21,771,519
Meadowlands	41	74,508,765
Garden State Park	0	0
<b>Sub-Total Thoroughbred Tracks</b>	<b>124</b>	<b>\$222,824,589</b>
<b>HARNESS</b>		
Atlantic City Harness, Inc.	98	47,653,285
Freehold Raceway	92	52,377,979
Garden State Park	0	0
Meadowlands	147	231,511,921
<b>Sub-Total Harness Tracks</b>	<b>337</b>	<b>\$331,543,185</b>
<b>Total Inter-State Wagering</b>	<b>461</b>	<b>\$554,367,774</b>

NOTE: Interstate wager is Gross Handle, from All-sources, less NJ Handle ( OOSH )

INTERST

6/25/2008

# Account Wagering In State 1/1/07 through 12/31/07

	Internet	Phone	OTW Facilities	Total
Purse Share:				
Thoroughbred Standardbred	215,238.23	57,435.96	77,322.74	349,996.93
	462,777.72	80,947.49	441,734.41	655,459.62
Breeder & Development:				
Thoroughbred Standardbred	717.46	191.50	257.80	1,166.76
	1,479.52	258.74	357.69	2,095.95
Sire Stakes Programs:				
TBA	25,457.14	4,432.48	6,299.02	36,188.64
	23,676.08	6,318.03	8,505.58	38,499.69
SBOA Health Benefits	4,438.53	776.23	1,072.99	6,287.75
Backstretch Benevolence	2,196.98	450.24	615.49	3,262.71
Breakage	53,825.26	14,950.81	14,811.95	83,588.02
Amount Returned to Patrons	8,746,760.05	1,801,487.69	2,452,767.87	13,001,015.61
State Settlement	0.00	0.00	0.00	0.00
Cost of Signal	0.00	0.00	0.00	0.00
Account Wagering Licensee	1,448,234.83	283,651.89	407,151.32	2,139,038.04
Total Pari-Mutuel Handle	<u>10,984,801.80</u>	<u>2,250,901.06</u>	<u>3,080,896.86</u>	<u>16,316,599.72</u>

# Account Wagering Out State

1/1/07 through 12/31/07

	Internet	Phone	OTW Facilities	Total
MDLS for Thoroughbred Overnight Purses and for programs to aid the Thoroughbred Horsemen	511,810.84	89,654.57	268,799.86	870,265.27
MP for Thoroughbred Overnight Purses and for programs to aid the Thoroughbred Horsemen	1,602,589.43	280,727.67	841,669.98	2,724,987.08
ACRA for Thoroughbred Overnight Purses and for programs to aid the Thoroughbred Horsemen	32,898.76	5,762.92	17,278.23	55,939.91
MDLS for Standardbred Overnight Purses and for programs to aid the Standardbred Horsemen	845,863.64	148,171.03	444,242.31	1,438,276.98
FRA for Standardbred Overnight Purses and for programs to aid the Standardbred Horsemen	310,374.30	54,368.67	163,006.65	527,749.62
Standardbred Breeders and Owners Association (SBOA) for Standardbred Health & Welfare	10,054.24	1,761.21	5,280.43	17,095.88
Thoroughbred Breeders and Stallions (TBA)	175,518.36	30,745.78	92,181.15	298,445.29
Thoroughbred Backstretch Benevolency	5,601.65	981.25	2,941.95	9,524.85
Thoroughbred Breeding and Development	5,601.65	981.25	2,941.95	9,524.85
Site Stakes	75,406.82	13,209.11	39,603.19	128,219.12
Standardbred Breeders and Stallions	8,043.39	1,408.97	4,224.34	13,676.70
Standardbred Backstretch Benevolency	3,518.99	616.43	1,848.15	5,983.57
Standardbred Breeding and Development	3,518.98	616.42	1,848.14	5,983.54
<b>Total New Jersey Racing Industry Special Fund</b>	<b>3,590,801.05</b>	<b>629,005.28</b>	<b>1,885,866.33</b>	<b>6,105,672.66</b>
Breakage	254,748.68	58,694.29	87,822.25	401,265.22
Amount Returned to Patrons	42,308,386.45	8,055,244.03	22,103,420.11	72,467,050.59
State Settlement	21.74	4.42	9.91	36.07
Cost of Signal	1,794,053.13	349,849.68	905,606.25	3,049,509.06
Account Wagering Licensee	5,386,201.84	943,507.91	2,828,800.19	9,158,509.94
<b>Total Par Mutual Handle</b>	<b>53,334,212.89</b>	<b>10,036,305.61</b>	<b>27,811,525.04</b>	<b>91,182,043.54</b>

# Account Wagering In & Out of State 1/1/07 through 12/31/07

	Internet	Phone	OTW Facilities	Total
MDLS for Thoroughbred Overnight Purses and for programs to aid the Thoroughbred Horsemen	511,810.84	89,654.57	268,799.86	870,265.27
MP for Thoroughbred Overnight Purses and for programs to aid the Thoroughbred Horsemen	1,602,589.43	280,727.67	841,669.98	2,724,987.08
ACRA for Thoroughbred Overnight Purses and for programs to aid the Thoroughbred Horsemen	32,898.76	5,762.92	17,278.23	55,939.91
MDLS for Standardbred Overnight Purses and for programs to aid the Standardbred Horsemen	845,863.64	148,171.03	444,242.31	1,438,276.98
FRA for Standardbred Overnight Purses and for programs to aid the Standardbred Horsemen	310,374.30	54,368.67	163,006.65	527,749.62
Standardbred Breeders and Owners Association (SBOA) for Standardbred Health & Welfare	10,054.24	1,761.21	5,280.43	17,095.88
Thoroughbred Breeders and Stallions (TBA)	175,518.36	30,745.78	92,181.15	298,445.29
Thoroughbred Backstretch Benevolency	5,601.65	981.25	2,941.95	9,524.85
Thoroughbred Breeding and Development	5,601.65	981.25	2,941.95	9,524.85
Sire Stakes	75,406.82	13,209.11	39,603.19	128,219.12
Standardbred Breeders and Stallions	8,043.39	1,408.97	4,224.34	13,676.70
Standardbred Backstretch Benevolency	3,518.99	616.43	1,848.15	5,983.57
Standardbred Breeding and Development	3,518.98	616.42	1,848.14	5,983.54
<b>Total New Jersey Racing Industry Special Fund</b>	<b>3,590,801.05</b>	<b>629,005.28</b>	<b>1,885,866.33</b>	<b>6,105,672.66</b>
Purse Share:				
Thoroughbred	215,238.23	57,435.96	77,322.74	349,996.93
Standardbred	462,777.72	80,947.49	111,734.41	655,459.62
Breeder & Development:				
Thoroughbred	717.46	191.50	257.80	1,166.76
Standardbred	1,479.52	258.74	357.69	2,095.95
Sire Stakes Programs	25,457.14	4,432.48	6,299.02	36,188.64
TRA	23,676.08	6,318.03	8,505.58	38,499.69
SBOA Health Benefits	4,438.53	776.23	1,072.99	6,287.75
Backstretch Benevolence	2,196.98	450.24	615.49	3,262.71
Breakage	308,573.94	73,645.10	102,634.20	484,853.24
Amount Returned to Patrons	51,055,146.50	9,856,731.72	24,556,187.98	85,468,066.20
State Settlement	21.74	4.42	9.91	36.07
Cost of Signal	1,794,053.13	349,849.68	905,606.25	3,049,509.06
Account Wagering Licensee	6,834,436.67	1,227,159.80	3,235,951.51	11,297,547.98
<b>Total Pari-Mutuel Handle</b>	<b>64,319,014.69</b>	<b>12,287,206.67</b>	<b>30,892,421.90</b>	<b>107,498,643.26</b>



INFORMATION THE ANNUAL REPORT  
 New Jersey Racing Commission  
 Summary of Part-Mutuel Activity  
 Atlantic City Casinos  
 1/1/07 through 12/31/07

Host Track	New Jersey Signals Received	Triump		Resorts	Caesar's	Bally's Park Place	Triump		Tropicana	Borgata	Hub Total
		Showboat	Taj Mahal				Martha	Paradise			
Atlantic City Harness, Inc.	72,675	92,557	62,904	157,509	241,521	42,088	104,433	339,504	1,113,191		
Fleethold	77,361	91,364	57,460	104,272	193,927	28,477	73,858	363,279	989,998		
Meadowlands - Harness	282,903	315,012	197,561	478,551	726,658	176,680	416,010	1,448,439	4,041,814		
Meadowlands - Thoroughbred	62,160	74,335	48,671	67,786	146,597	33,055	66,418	272,979	772,001		
Momouth Park - Thoroughbred	200,815	216,582	123,588	603,220	767,852	110,392	387,933	1,520,441	3,930,793		
Total N.J. Signals Received	655,914	789,820	490,784	1,411,338	2,076,555	380,692	1,048,652	3,944,642	10,847,797		
Out-of-State Signals Received											
Arlington	125,187	134,785	79,689	285,909	348,327	53,742	172,069	751,625	1,951,343		
Aqueduct	500,802	580,660	321,916	1,199,471	1,560,985	246,561	634,449	2,487,613	7,532,457		
Balmoral	0	182,588	90,434	123,698	343,999	36,516	155,431	555,608	1,488,274		
Bay Meadows	72,995	78,851	46,189	128,039	193,622	26,149	83,883	261,566	891,296		
Belmont	523,650	678,239	327,669	1,454,500	1,711,772	253,776	749,348	2,958,471	8,657,425		
Beulah	42,548	78,561	43,706	131,338	223,359	29,748	106,612	289,919	945,791		
Caldor	130,276	160,915	89,252	299,842	379,267	67,969	179,153	691,362	1,998,036		
Cal-Expo	0	0	0	0	152,792	0	27,380	248,103	428,275		
Charlestown	174,521	208,810	129,441	304,133	478,900	77,601	223,401	651,029	2,247,836		
Chester Downs	56,697	60,414	43,937	76,304	133,357	20,353	50,289	198,382	639,733		
Churchill Downs	224,055	239,983	144,026	534,810	743,880	114,742	425,127	1,494,462	3,921,085		
Colonial Downs	41,726	42,980	23,898	92,426	112,149	16,087	64,045	190,924	584,235		
Del Mar	74,818	121,413	49,942	156,795	227,367	38,195	105,188	511,719	1,295,437		
Delaware Park	209,251	209,183	116,840	377,148	616,852	78,552	293,191	793,772	2,694,789		
Delta Downs	50,728	97,628	53,683	136,001	227,958	30,993	92,115	328,520	1,027,636		
Dover Downs	96,613	165,365	77,788	160,198	337,993	39,223	154,925	428,959	1,460,664		
Ellis Park	35,972	40,375	22,848	87,299	105,238	20,176	68,801	249,016	629,725		
Engelbine	0	108,815	68,673	150,538	247,907	37,151	124,280	367,297	1,104,661		
Fair Grounds	114,647	128,579	67,267	308,157	395,162	56,896	159,778	842,376	2,072,862		
Finger Lakes	12,825	20,372	9,952	32,863	54,373	5,907	12,270	79,017	227,579		
Golden Gate	63,052	105,341	75,395	194,564	322,646	41,355	142,346	382,835	1,327,534		
Great Lake Downs	77,429	107,798	50,584	147,442	232,099	27,464	103,040	415,391	1,161,257		
Gulfstream	23,997	50,573	21,087	61,299	112,639	11,148	47,410	121,905	450,058		
Hambro/Haskell Double	223,157	219,741	125,501	624,148	742,670	126,333	349,784	1,442,321	3,853,655		
Harrington Raceway	71	10	0	0	0	15	0	100	196		
Hawthorne T	46,748	76,582	46,919	72,253	153,248	20,493	70,911	215,953	703,077		
Hollywood	87,472	124,449	72,238	236,215	266,356	46,735	134,468	473,084	1,471,017		
Hollywood	0	33,056	19,154	46,163	68,582	8,172	32,677	89,078	296,882		
Hoosier Park	137,389	199,563	78,713	294,171	480,416	53,898	197,561	997,579	2,439,290		
Keeneland	0	97,078	47,199	98,968	188,749	27,203	95,068	296,782	849,047		
Keeneland	98,440	78,840	50,385	241,336	279,885	40,637	116,530	639,317	1,545,350		
Kentucky Downs	0	4,186	1,167	6,242	10,055	680	3,402	11,482	37,214		
Laurel	209,110	225,666	155,260	434,517	682,099	107,031	309,698	1,003,682	3,127,063		
Los Alamitos	0	0	0	0	169,953	0	40,231	240,794	450,978		
Lone Star Park	33,269	62,634	40,045	118,272	140,875	22,018	71,623	206,830	695,566		
Louisiana Downs	33,871	104,088	52,064	205,700	225,693	35,818	107,110	411,332	1,175,676		
Laywood	0	73,622	36,978	88,523	156,181	12,872	86,470	263,822	718,468		
Meadows	35,514	100,983	63,533	123,485	280,176	24,235	103,292	279,334	990,552		
Monticello Raceway H	88,326	124,045	101,779	209,211	394,719	48,275	154,775	399,107	1,520,237		
Mountaineer	189,631	295,877	175,411	279,646	595,466	78,999	299,456	874,475	2,788,961		
Northfield	162,075	233,235	105,285	229,143	443,342	22,064	221,296	661,795	2,788,961		
Oaklawn	54,303	47,626	31,903	116,896	166,470	22,064	63,017	277,479	769,758		
Penn National	130,562	127,414	88,620	168,125	289,157	44,584	148,567	446,944	1,443,973		
Philadelphia Park	347,781	332,261	208,015	611,892	1,118,455	157,028	425,458	1,232,866	4,433,756		
Pimlico	93,811	113,750	49,059	200,920	228,259	42,474	141,573	450,604	1,320,550		
Pocomo Downs	17,785	54,391	45,838	72,730	129,607	17,705	55,915	184,789	594,734		

New Jersey Racing Commission  
 Summary of Pari-Mutuel Activity  
 Atlantic City Casinos  
 1/1/07 through 12/31/07

Host Track	Showboat	Trump Taj Mahal	Resorts	Caesar's	Bally's Park Place	Trump Marina	Tropicana	Botgate	Hub Total
New Jersey Signals Received									
Pompano	3,486	43,461	25,221	53,444	88,656	10,908	40,916	138,698	404,790
Portland Meadows	3,229	13,444	7,230	19,897	31,429	1,801	14,142	37,035	128,207
Remington Park	0	31,186	16,640	57,799	71,747	7,478	25,269	100,803	309,922
Riverdowns	6,759	21,221	10,514	30,258	54,763	7,425	30,328	70,268	231,536
Rosecroft	552	31,761	17,153	42,076	68,005	8,449	31,543	78,742	278,281
Sam Houston	0	79,836	43,988	104,943	193,647	32,542	89,103	293,160	837,219
Santa Anita	222,726	233,933	137,279	478,608	705,916	107,288	286,807	1,335,325	3,507,882
Saratoga	234,053	338,595	149,109	636,051	901,648	124,134	374,022	1,595,364	4,352,976
Surfak	11,362	80,391	40,049	130,382	156,755	25,829	101,380	209,081	755,229
Tampa Bay Downs	206,907	214,274	115,149	445,414	672,513	98,246	300,328	931,240	2,984,071
Thistledown	0	109,809	66,140	173,562	265,105	38,840	113,042	373,255	1,139,753
Timonium	2,645	4,796	2,641	6,889	7,953	701	2,963	10,562	39,150
Tropical	96,710	89,648	58,035	160,522	254,535	40,250	116,979	435,047	1,251,726
Turf Paradise	54,579	129,788	69,822	193,625	298,331	38,070	133,857	414,811	1,332,883
Turfway	85,819	107,894	53,448	189,253	275,056	43,701	120,672	483,400	1,359,243
Yonkers	240,416	252,030	156,445	343,899	507,287	87,289	296,586	904,945	2,788,897
Total Out-of-State Signals Received	5,810,351	8,113,362	4,517,125	13,997,952	21,044,202	2,994,485	9,481,454	33,811,128	99,770,059
Total Pari-Mutuel Activity	6,506,265	8,903,182	5,007,309	15,409,290	23,120,757	3,385,177	10,530,106	37,705,770	110,617,856

New Jersey Racing Commission  
 Part-Mutuel Takeout  
 Atlantic City Casino  
 In-State Simulcasting  
 1/1/07 through 12/31/07

Racing Days	Showboat	Trump Taj Mahal	Resorts	Caesar's	Bally's Park Place	Trump Manha	Tropicana	Borgata	Hub Total
Casino Simulcasting Fund	3,480.66	3,950.22	2,452.07	7,057.78	10,383.86	1,954.60	5,244.43	19,724.33	54,247.95
Casino - Placement of Signal	0.00	0.00	0.00	0.00	0.00	0.00	0.00	0.00	0.00
A.C.R.A. Contingency Fund - State	0.00	0.00	0.00	0.00	0.00	0.00	0.00	0.00	0.00
Casino Share	69,110.15	77,618.90	48,358.59	136,926.07	204,051.89	38,380.98	103,702.93	379,778.63	1,057,928.14
Special Trust - Harness									
Site Stakes	1,139.72	1,316.87	840.06	1,950.50	3,069.33	646.21	1,555.85	5,649.74	16,168.28
Track Pursas	906.35	1,040.25	661.90	1,546.67	2,420.89	521.25	1,250.69	4,510.78	12,857.78
Breeder & Stallion Awards	119.52	137.66	87.64	204.41	320.38	68.64	164.94	595.57	1,698.76
Special Trust - Thoroughbred Thoroughbred Breeders	1,316.16	1,454.75	861.62	3,355.34	4,572.55	717.51	2,272.09	8,967.38	23,516.40
Breeding & Development									
Harness	129.95	149.69	95.37	222.16	348.63	74.17	178.29	645.27	1,843.53
Thoroughbred	78.87	87.31	51.65	201.30	274.35	43.04	136.31	538.07	1,410.90
Purse Allocation In State Out of State	32,024.75	36,105.20	22,505.46	63,016.63	95,105.63	17,625.93	46,120.60	176,115.33	488,619.53
Track Share Allocator: In State Out of State	32,011.76	36,059.53	22,440.13	62,980.45	95,020.36	17,591.79	46,040.67	175,869.38	488,014.07
Casino Simulcasting Special Fund Total Commissions	0.00	0.00	0.00	0.00	0.00	0.00	0.00	0.00	0.00
Breakage	140,315.89	157,920.38	98,354.49	277,481.31	415,567.87	77,624.12	206,666.80	772,394.48	2,146,305.34
Total Amount Distributed	3,826.68	4,439.59	2,779.47	8,259.65	11,831.36	2,158.39	6,014.32	24,658.44	63,967.90
Amount Returned to Patron Total Part-Mutuel Handle	144,142.57	162,353.97	101,133.96	285,720.96	427,395.23	78,782.81	212,681.12	797,052.92	1,413,220.32
	551,774.43	627,460.03	389,050.04	1,125,617.04	1,649,155.77	310,909.49	835,970.88	3,147,589.08	8,637,528.76
	895,917.00	789,820.00	490,184.00	1,411,338.00	2,076,555.00	390,692.00	1,048,652.00	3,944,642.00	10,347,300.00

New Jersey Racing Commission  
 Part-Mutual Takeout  
 Atlantic City Casinos  
 Out-of-State Simulcasting  
 1/1/07 through 12/31/07

Racing Days	Snowboat	Trump Tel Mahal	Resorts	Caesar's	Bally's Park Place	Trump Marina	Tropicana	Borgata	Hub Total
Casino Simulcasting Fund	174,460.77	244,064.85	135,250.81	421,155.50	630,966.46	90,846.83	288,022.10	1,013,348.98	2,998,116.30
Casino - Placement of Signal	0.00	0.00	0.00	0.00	0.00	0.00	0.00	0.00	0.00
A.C.R.A. Contingency Fund - State									
Casino Share	480,102.35	675,871.04	382,589.97	1,127,206.94	1,762,611.22	245,929.15	785,264.15	2,777,017.19	8,236,572.01
Sire Stakes	8,236.30	11,500.55	6,402.83	19,841.92	29,829.99	4,244.76	13,440.19	47,927.46	141,424.00
Track Purses	5,533.78	7,727.02	4,301.98	13,332.95	20,044.31	2,852.25	9,030.72	32,204.89	95,027.90
Breeder & Stallion Awards	755.22	1,054.92	587.48	1,819.98	2,735.71	388.36	1,232.60	4,395.27	12,969.54
Special Trust - Thoroughbred Thoroughbred Breeders	14,530.77	20,291.48	11,300.66	35,002.46	52,618.89	7,495.19	23,711.92	84,536.33	249,487.70
Breeding & Development Thoroughbred	872.06	1,216.88	677.69	2,100.19	3,157.01	448.87	1,422.77	5,071.48	14,966.95
Purse Allocation In State	0.00	0.00	0.00	0.00	0.00	0.00	0.00	0.00	0.00
Track Share allocation In State	0.00	0.00	0.00	0.00	0.00	0.00	0.00	0.00	0.00
Out of State	193,189.89	272,117.17	154,192.83	452,779.57	709,943.89	98,907.65	316,036.58	1,117,043.04	3,314,210.62
Casino Simulcasting Special Fund Total Commissions	62,899.87	88,597.01	50,203.29	147,417.53	231,145.27	32,203.15	102,896.03	363,689.26	1,079,051.41
Breakage	29,768.87	42,463.06	20,718.03	75,137.59	103,639.44	14,720.94	48,613.09	168,472.27	503,533.29
Total Amount Distributed	1,196,958.35	1,682,771.42	946,130.88	2,827,738.71	4,375,416.33	614,336.08	1,959,798.42	6,924,616.88	21,324,819.57
Amount Returned to Patron Total Par-Mutuel Handle	4,613,391.65	6,430,590.58	3,570,994.34	11,170,213.29	16,688,785.67	2,380,148.92	7,521,665.58	26,886,509.32	79,242,289.35
	5,810,348.00	8,113,362.00	4,517,125.00	13,997,952.00	21,044,202.00	2,994,485.00	9,481,454.00	33,811,128.00	99,770,056.00

New Jersey Racing Commission  
 Atlantic City Casinos  
 In-State & Out-of-State Simulcasting  
 1/1/07 through 12/31/07

	Showboat	Trump Taj Mahal	Resorts	Caesar's	Bally's Park Place	Trump Marina	Tropicana	Borgata	Hub Total
Racing Days									
Casino Simulcasting Fund	32,542.92	44,533.09	25,053.43	77,063.17	115,021.79	10,940.92	52,066.33	188,796.66	553,220.31
Casino - Participant of Signal	177,941.43	248,015.07	137,702.88	428,213.28	641,350.32	92,801.43	293,266.53	1,023,073.31	3,052,364.25
A.C.R.A. Contingency Fund - State									
Casino Share	549,212.50	753,489.94	430,928.56	1,284,133.01	1,966,683.11	284,310.13	888,967.08	3,156,795.82	9,294,500.15
Special Trust - Harness									
Sire Stakes	9,376.02	12,817.42	7,242.89	21,792.42	32,899.32	4,890.97	14,996.04	53,577.20	157,592.28
Track Purse	6,439.13	8,767.27	4,963.88	14,879.62	22,465.20	3,373.50	10,281.41	36,716.67	107,895.68
Breeder & Stallion Awards	874.74	1,192.58	675.12	2,024.39	3,056.09	457.00	1,397.54	4,990.84	14,668.30
Special Trust - Thoroughbred									
Thoroughbred Breeders	15,845.93	21,746.23	12,162.28	36,357.80	57,191.44	8,212.70	25,984.01	93,503.71	273,004.10
Breeding & Development									
Harness	1,002.01	1,366.57	773.06	2,322.35	3,505.64	523.04	1,601.06	5,716.75	16,810.48
Thoroughbred	950.93	1,304.19	729.34	2,301.49	3,431.36	491.91	1,559.08	5,609.55	16,377.85
Purse Allocation									
In State	32,024.75	36,105.20	22,505.46	63,016.63	95,105.63	17,625.93	46,120.60	176,115.33	488,619.53
Out of State	193,191.49	272,117.47	154,193.97	452,780.72	709,945.34	98,909.14	316,037.17	1,117,044.37	3,314,219.67
Track Share allocation									
In State	32,011.76	36,059.53	22,440.13	62,980.45	95,020.36	17,591.79	46,040.67	175,869.38	488,014.07
Out of State	193,189.89	272,117.17	154,192.83	452,795.67	709,943.89	98,907.65	316,036.68	1,117,043.04	3,314,210.62
Casino Simulcasting Special Fund									
Total Commissions	62,899.87	88,597.01	50,203.29	147,417.53	231,145.27	32,203.15	102,896.03	363,689.26	1,079,051.41
Breakage	1,307,503.37	1,798,226.74	1,023,787.12	3,030,062.43	4,687,344.76	677,239.26	2,117,852.13	7,528,540.89	22,170,538.70
Total Amount Distributed	33,595.55	46,902.65	23,497.50	83,397.24	115,470.80	16,879.33	54,627.41	193,130.71	567,501.19
Amount Returned to Patron	1,341,098.92	1,845,131.39	1,047,284.62	3,113,459.67	4,802,815.56	694,118.59	2,172,479.54	7,721,671.60	22,738,035.89
Total Pari-Mutuel Handle	5,166,166.08	7,058,050.61	3,980,044.38	12,295,830.33	18,317,941.44	2,691,058.41	8,357,626.46	30,034,098.40	87,879,816.11
	6,506,266.00	8,903,182.00	5,007,309.00	15,408,290.00	23,120,767.00	3,386,177.00	10,530,106.00	37,758,776.00	110,617,856.00

## New Jersey Racing Commission CY 2007 License Revenue Received Harness

Note: All license data is based on transactions that occurred in CY 2007.

### All Licenses Issued in CY 2007

Cat	Classification	Fee	ACRA		Freehold		Meadowlands		Trenton		Monmouth		Total	
			Qty	Total	Qty	Total	Qty	Total	Qty	Total	Qty	Total	Qty	Total
1	Owner	\$50	2	\$100	704	\$35,200	872	\$43,600	617	\$30,850	4	\$200	2,199	\$109,950
2	Trainer	\$50		\$0	199	\$9,950	269	\$13,450	59	\$2,950		\$0	527	\$26,350
3	Assistant Trainer	\$30		\$0		\$0		\$0		\$0		\$0	0	\$0
4	Driver	\$50		\$0	57	\$2,850	86	\$4,300	10	\$500		\$0	153	\$7,650
5	Driver / Trainer	\$50		\$0	293	\$14,650	218	\$10,900	65	\$3,250	1	\$50	577	\$28,850
6	Jockey	\$50		\$0		\$0		\$0		\$0		\$0	0	\$0
7	Jockey Apprentice	\$30		\$0		\$0		\$0		\$0		\$0	0	\$0
8	Jockey Agent	\$50		\$0		\$0		\$0		\$0		\$0	0	\$0
9	Stable Employee	\$5		\$0	481	\$2,405	430	\$2,150	3	\$15		\$0	914	\$4,570
10	C.I.D.	\$10		\$0	172	\$1,720	1,013	\$10,130		\$0	2	\$20	1,187	\$11,870
11	C.I.D. - Vendors	\$10		\$0	161	\$1,610	232	\$2,320	1	\$10		\$0	394	\$3,940
12	Pari-Mutuel Employee	\$25	1	\$25	65	\$1,625	237	\$5,925		\$0	2	\$50	305	\$7,625
13	Veterinarian	\$50		\$0	32	\$1,600	12	\$600	1	\$50		\$0	45	\$2,250
14	Valet	\$20		\$0		\$0		\$0		\$0		\$0	0	\$0
15	Plater	\$20		\$0		\$0		\$0		\$0		\$0	0	\$0
16	Vendor	\$50		\$0	18	\$900	11	\$550	1	\$50		\$0	30	\$1,500
17	Stable Name	\$50		\$0	101	\$5,050	181	\$9,050	143	\$7,150	1	\$50	426	\$21,300
18	Multiple Ownership	\$50		\$0	150	\$7,500	339	\$16,950	64	\$3,200		\$0	553	\$27,650
19	Corporate Stable Name	\$50		\$0	30	\$1,500	91	\$4,550	62	\$3,100		\$0	183	\$9,150
20	Authorized Agent	\$50		\$0		\$0		\$0		\$0		\$0	0	\$0
21	Off-Track Stables	\$50		\$0		\$0		\$0	33	\$1,650		\$0	33	\$1,650
23	Veterinarian - NJRC	\$0		\$0	3	\$0	5	\$0		\$0		\$0	8	\$0
25	C.I.D. - NJRC	\$0		\$0	29	\$0	30	\$0	1	\$0	1	\$0	61	\$0
26	Off-Track Proprietors	\$0		\$0		\$0		\$0		\$0		\$0	0	\$0
27	Official - NJRC	\$0		\$0	7	\$0	1	\$0		\$0		\$0	8	\$0
28	Partnership	\$0		\$0	29	\$0	15	\$0	39	\$0		\$0	83	\$0
31	Owner - 3 Year	\$150		\$0	141	\$21,150	266	\$39,900	317	\$47,550	2	\$300	726	\$108,900
All Licenses wo/dups Issued in CY 2007			3	\$125	2,672	\$107,710	4,308	\$164,375	1,416	\$100,325	13	\$670	8,412	\$373,205
DUP Duplicate License Fees				\$5		\$0	1	\$5	11	\$55		\$0	12	\$60
Total Licenses w/dups Issued in CY 2007				\$125		\$107,715		\$164,430		\$100,325		\$670		\$373,265

**New Jersey Racing Commission**  
**CY 2007 License Revenue Received**  
**Thoroughbred**

Note: All license data is based on transactions that occurred in CY 2007.

Cat	Classification	Fee	ACRA		Freehold		Meadowlands		Trenton		Monmouth		Total	
			Qty	Total	Qty	Total	Qty	Total	Qty	Total	Qty	Total	Qty	Total

<b>All Licenses Issued in CY 2007</b>														
1	Owner	\$50	120	\$6,000	14	\$700	119	\$5,950	448	\$22,400	685	\$34,250	1,386	\$69,300
2	Trainer	\$50	112	\$5,600	5	\$250	67	\$3,350	71	\$3,550	302	\$15,100	557	\$27,850
3	Assistant Trainer	\$30	2	\$60		\$0	5	\$150		\$0	105	\$3,150	112	\$3,360
4	Driver	\$50		\$0		\$0		\$0		\$0		\$0	0	\$0
5	Driver / Trainer	\$50		\$0		\$0		\$0		\$0		\$0	0	\$0
6	Jockey	\$50	44	\$2,200		\$0	30	\$1,500		\$0	83	\$4,150	157	\$7,850
7	Jockey Apprentice	\$30	5	\$150		\$0	3	\$90		\$0	7	\$210	15	\$450
8	Jockey Agent	\$50		\$0		\$0		\$0		\$0	20	\$1,000	20	\$1,000
9	Stable Employee	\$5	5	\$25	1	\$5	7	\$35	2	\$10	1,233	\$6,165	1,248	\$6,240
10	C.I.D.	\$10	50	\$500	75	\$750	22	\$220	1	\$10	451	\$4,510	599	\$5,990
11	C.I.D. - Vendors	\$10	2	\$20	3	\$30	17	\$170	10	\$100	279	\$2,790	311	\$3,110
12	Part-Mutuel Employee	\$25	24	\$600	63	\$1,575	1	\$25		\$0	226	\$5,650	314	\$7,850
13	Veterinarian	\$50		\$0		\$0	2	\$100		\$0	14	\$700	16	\$800
14	Valet	\$20	15	\$300		\$0	2	\$40		\$0	12	\$240	29	\$580
15	Plater	\$20	1	\$20	1	\$20		\$0		\$0	23	\$460	25	\$500
16	Vendor	\$50		\$0	1	\$50		\$0		\$0	31	\$1,550	38	\$1,900
17	Stable Name	\$50	38	\$1,900	3	\$150	61	\$3,050	193	\$9,650	313	\$15,650	608	\$30,400
18	Multiple Ownership	\$50	1	\$50		\$0	7	\$350	9	\$450	67	\$3,350	84	\$4,200
19	Corporate Stable Name	\$50		\$0		\$0		\$0		\$0		\$0	0	\$0
20	Authorized Agent	\$50		\$0		\$0	3	\$150		\$0	34	\$1,700	37	\$1,850
21	Off-Track Stables	\$50		\$0		\$0		\$0	21	\$1,050		\$0	21	\$1,050
23	Veterinarian - NJRC	\$0	1	\$0		\$0	2	\$0		\$0	5	\$0	8	\$0
25	C.I.D. - NJRC	\$0	3	\$0		\$0	1	\$0		\$0	3	\$0	7	\$0
26	Off-Track Proprietors	\$0		\$0		\$0		\$0		\$0		\$0	0	\$0
27	Official - NJRC	\$0		\$0	1	\$0		\$0		\$0	2	\$0	3	\$0
28	Partnership	\$0	3	\$0		\$0		\$0		\$0		\$0	19	\$0
31	Owner - 3 Year	\$150	7	\$1,050	9	\$1,350	55	\$8,250	249	\$37,350	262	\$39,300	582	\$87,300
<b>All Licenses w/dups Issued in CY 2007</b>			<b>433</b>	<b>\$18,475</b>	<b>176</b>	<b>\$4,880</b>	<b>404</b>	<b>\$23,430</b>	<b>1,026</b>	<b>\$74,870</b>	<b>4,157</b>	<b>\$139,925</b>	<b>6,196</b>	<b>\$261,580</b>
<b>DUP Duplicate License Fees</b>			<b>\$5</b>	<b>\$0</b>		<b>\$0</b>		<b>\$0</b>		<b>\$0</b>	<b>9</b>	<b>\$45</b>	<b>9</b>	<b>\$45</b>

**Total Licenses w/dups Issued in CY 2007**      **\$18,475**      **\$4,880**      **\$23,430**      **\$74,870**      **\$139,970**      **\$261,625**

## New Jersey Racing Commission CY 2007 License Revenue Received All Sources

Note: All license data is based on transactions that occurred in CY 2007.

Cat	Classification	Fee	ACRA		Freehold		Meadowlands		Trenton		Monmouth		Total	
			Qty	Total	Qty	Total	Qty	Total	Qty	Total	Qty	Total	Qty	Total
1	Owner	\$50	122	\$6,100	718	\$35,900	991	\$49,550	1,065	\$53,250	689	\$34,450	3,585	\$179,250
2	Trainer	\$50	112	\$5,600	204	\$10,200	336	\$16,800	130	\$6,500	302	\$15,100	1,084	\$54,200
3	Assistant Trainer	\$30	2	\$60	0	\$0	5	\$150	0	\$0	105	\$3,150	112	\$3,360
4	Driver	\$50	0	\$0	57	\$2,850	86	\$4,300	10	\$500	0	\$0	153	\$7,650
5	Driver / Trainer	\$50	0	\$0	293	\$14,650	218	\$10,900	65	\$3,250	1	\$50	577	\$28,850
6	Jockey	\$50	44	\$2,200	0	\$0	30	\$1,500	0	\$0	83	\$4,150	157	\$7,850
7	Jockey Apprentice	\$30	5	\$150	0	\$0	3	\$90	0	\$0	7	\$210	15	\$450
8	Jockey Agent	\$50	0	\$0	0	\$0	0	\$0	0	\$0	20	\$1,000	20	\$1,000
9	Stable Employee	\$5	5	\$25	482	\$2,410	437	\$2,185	5	\$25	1,233	\$6,165	2,162	\$10,810
10	C.I.D.	\$10	51	\$510	264	\$2,640	1,128	\$11,280	15	\$150	455	\$4,550	1,913	\$19,130
11	C.I.D. - Vendors	\$10	2	\$20	267	\$2,670	263	\$2,630	17	\$170	288	\$2,880	837	\$8,370
12	Pari-Mutuel Employee	\$25	25	\$625	132	\$3,300	255	\$6,375	2	\$50	228	\$5,700	642	\$16,050
13	Veterinarian	\$50	0	\$0	32	\$1,600	14	\$700	1	\$50	14	\$700	61	\$3,050
14	Valet	\$20	15	\$300	0	\$0	2	\$40	0	\$0	12	\$240	29	\$580
15	Plater	\$20	1	\$20	1	\$20	0	\$0	0	\$0	23	\$460	25	\$500
16	Vendor	\$50	0	\$0	20	\$1,000	11	\$550	13	\$650	31	\$1,550	75	\$3,750
17	Stable Name	\$50	38	\$1,900	104	\$5,200	242	\$12,100	336	\$16,800	314	\$15,700	1,034	\$51,700
18	Multiple Ownership	\$50	1	\$50	150	\$7,500	346	\$17,300	73	\$3,650	67	\$3,350	637	\$31,850
19	Corporate Stable Name	\$50	0	\$0	30	\$1,500	91	\$4,550	62	\$3,100	0	\$0	183	\$9,150
20	Authorized Agent	\$50	0	\$0	0	\$0	3	\$150	0	\$0	34	\$1,700	37	\$1,850
21	Off-Track Stables	\$50	0	\$0	0	\$0	0	\$0	54	\$2,700	0	\$0	54	\$2,700
23	Veterinarian - NJRC	\$0	1	\$0	3	\$0	7	\$0	0	\$0	5	\$0	16	\$0
25	C.I.D. - NJRC	\$0	3	\$0	29	\$0	31	\$0	1	\$0	4	\$0	68	\$0
26	Off-Track Proprietors	\$0	0	\$0	0	\$0	0	\$0	0	\$0	0	\$0	0	\$0
27	Official - NJRC	\$0	0	\$0	8	\$0	1	\$0	0	\$0	2	\$0	11	\$0
28	Partnership	\$0	3	\$0	29	\$0	15	\$0	55	\$0	0	\$0	102	\$0
31	Owner - 3 Year	\$150	7	\$1,050	150	\$22,500	321	\$48,150	566	\$84,900	264	\$39,600	1,308	\$196,200
All Licenses wo/dups Issued in CY 2007			437	\$18,610	2,973	\$113,940	4,836	\$189,300	2,470	\$175,745	4,181	\$140,705	14,897	\$638,300
DUP Duplicate License Fees			0	\$0	1	\$5	11	\$55	0	\$0	9	\$45	21	\$105
Total Licenses w/dups Issued in CY 2007				<u>\$18,610</u>		<u>\$113,945</u>		<u>\$189,355</u>		<u>\$175,745</u>		<u>\$140,750</u>		<u>\$638,405</u>



**New Jersey Racing Commission  
CY 2007 License Revenue Received  
Account Wagering & Off Track Wagering**

Note: All license data is based on transactions that occurred in CY 2007.

Cat	Classification	Fee	ACRA		Freehold		Meadowlands		Trenton		Monmouth		Total	
			Qty	Total	Qty	Total	Qty	Total	Qty	Total	Qty	Total	Qty	Total

**All Licenses Issued in CY 2007**

1	Owner	\$50		\$0		\$0		\$0		\$0		\$0		0	\$0
2	Trainer	\$50		\$0		\$0		\$0		\$0		\$0		0	\$0
3	Assistant Trainer	\$30		\$0		\$0		\$0		\$0		\$0		0	\$0
4	Driver	\$50		\$0		\$0		\$0		\$0		\$0		0	\$0
5	Driver / Trainer	\$50		\$0		\$0		\$0		\$0		\$0		0	\$0
6	Jockey	\$50		\$0		\$0		\$0		\$0		\$0		0	\$0
7	Jockey Apprentice	\$30		\$0		\$0		\$0		\$0		\$0		0	\$0
8	Jockey Agent	\$50		\$0		\$0		\$0		\$0		\$0		0	\$0
9	Stable Employee	\$5		\$0		\$0		\$0		\$0		\$0		0	\$0
10	C.I.D.	\$10	1	\$10	17	\$170	93	\$930	14	\$140	2	\$20	127	\$1,270	
11	C.I.D. - Vendors	\$10		\$0	103	\$1,030	14	\$140	6	\$60	9	\$90	132	\$1,320	
12	Pari-Mutuel Employee	\$25		\$0	4	\$100	17	\$425	2	\$50		\$0	23	\$575	
13	Veterinarian	\$50		\$0		\$0		\$0		\$0		\$0		0	\$0
14	Valet	\$20		\$0		\$0		\$0		\$0		\$0		0	\$0
15	Plater	\$20		\$0		\$0		\$0		\$0		\$0		0	\$0
16	Vendor	\$50		\$0	1	\$50		\$0	6	\$300		\$0	7	\$350	
17	Stable Name	\$50		\$0		\$0		\$0		\$0		\$0		0	\$0
18	Multiple Ownership	\$50		\$0		\$0		\$0		\$0		\$0		0	\$0
19	Corporate Stable Name	\$50		\$0		\$0		\$0		\$0		\$0		0	\$0
20	Authorized Agent	\$50		\$0		\$0		\$0		\$0		\$0		0	\$0
21	Off-Track Stables	\$50		\$0		\$0		\$0		\$0		\$0		0	\$0
23	Veterinarian - NJRC	\$0		\$0		\$0		\$0		\$0		\$0		0	\$0
25	C.I.D. - NJRC	\$0		\$0		\$0		\$0		\$0		\$0		0	\$0
26	Off-Track Proprietors	\$0		\$0		\$0		\$0		\$0		\$0		0	\$0
27	Official - NJRC	\$0		\$0		\$0		\$0		\$0		\$0		0	\$0
28	Partnership	\$0		\$0		\$0		\$0		\$0		\$0		0	\$0
31	Owner - 3 Year	\$150		\$0		\$0		\$0		\$0		\$0		0	\$0
<b>All Licenses wo/dups Issued in CY 2007</b>			<b>1</b>	<b>\$10</b>	<b>125</b>	<b>\$1,350</b>	<b>124</b>	<b>\$1,495</b>	<b>28</b>	<b>\$550</b>	<b>11</b>	<b>\$110</b>	<b>289</b>	<b>\$3,515</b>	
DUP Duplicate License Fees				\$5		\$0		\$0		\$0		\$0		0	\$0
<b>Total Licenses w/dups Issued in CY 2007</b>				<b>\$10</b>		<b>\$1,350</b>		<b>\$1,495</b>		<b>\$550</b>		<b>\$110</b>		<b>\$3,515</b>	

## EXPIRED OUTSTANDING MUTUEL TICKET REPORT

Date Ticket Purchased	IN STATE						OUT OF STATE		Revenue		
	Total	MDL-S-H	MDL-S-T	FRA/ACHI	MP	ACRA	Racing Costs	TBA	Horsemen's Groups		
ACRA 7/01/06 - 6/15/07	\$92,487.30	\$2,172.30	\$272.90	\$1,039.00	\$1,944.90	\$4,368.10	\$82,690.10	\$4,903.45	\$3,292.95		
ACHI/FRA 7/01/06 - 6/29/07	\$446,760.62	\$27,644.14	\$1,029.90	\$65,615.00	\$5,202.75	\$0.00	\$347,268.83	\$49,745.98	\$3,180.57		
MDLS 7/01/06 - 6/29/07	\$1,442,530.54	\$264,379.70	\$35,525.64	\$26,579.95	\$24,828.92	\$0.00	\$1,091,216.33	\$175,657.25	\$30,177.25		
MP 7/01/06 - 6/29/07	\$798,640.54	\$10,873.01	\$3,234.20	\$12,074.00	\$282,124.79	\$0.00	\$490,334.54	\$154,153.04	\$142,679.46		
Vineland 3/23/07 - 6/22/07	26,882.08	281.40	0.00	62.50	1,038.90	0.00	25,499.28	1,382.80		25,501.28	
<b>Grand Total</b>	<b>\$2,807,301.08</b>	<b>\$305,350.55</b>	<b>\$40,062.64</b>	<b>\$105,370.45</b>	<b>\$315,140.26</b>	<b>\$4,368.10</b>	<b>\$2,037,009.08</b>	<b>\$385,842.52</b>	<b>\$179,330.23</b>	<b>25,501.28</b>	