

# ANTARCTIC ANIMALS TRADING CARDS



## 1. PRINT

Load paper into printer and print all the pages single-sided.



## 2. FOLD

Fold along the solid center line to create two sided card.



## 3. GLUE

Adhere the back of cards with a glue stick or double sided tape.



## 4. CUT

Cut along dotted lines to separate each trading card.



### ADÉLIE PENGUIN

CLASS	<i>Aves</i>
WEIGHT	11 POUNDS
LENGTH	30 INCHES
LIFE SPAN	11-20 YEARS

NSF.gov | USAP.gov

LOCATION

Though clumsy-looking on land, Adélie penguins are excellent swimmers.

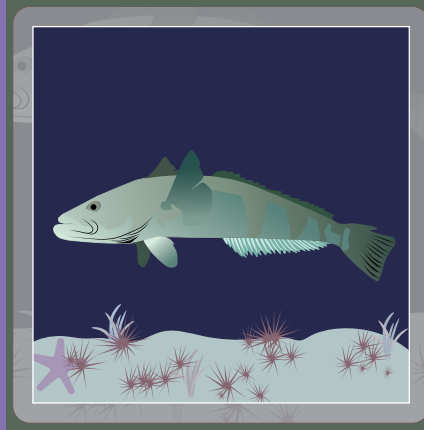
**FUN FACT**

- Eat krill, small fish, and squid.
- Return every year to where they hatched to lay their eggs.
- Colonies can be home to as many as a million birds.
- Build their nests out of pebbles on top of rocky ground.

**DID YOU KNOW THAT ADÉLIE PENGUINS...**

*PYGOSCELIS ADELIAE*

## ADÉLIE PENGUIN



### ANTARCTIC TOOTHFISH

CLASS	<i>ACTINOPTERYGII</i>
WEIGHT	100 POUNDS
LENGTH	5-8 FEET
LIFE SPAN	45 YEARS

NSF.gov | USAP.gov

Their blood has special properties to keep them from freezing in icy waters.

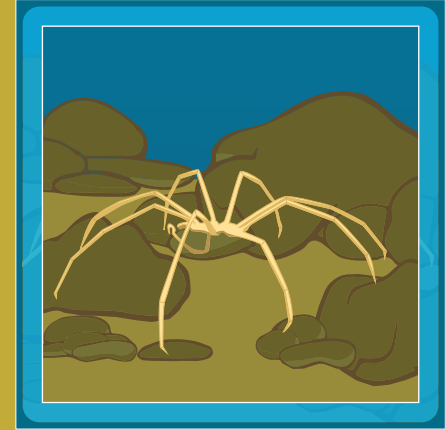
**FUN FACT**

- Are the largest Antarctic fish.
- Are named after Australian explorer Douglas Mawson.
- Are eaten by seals and whales.
- Live in waters as deep as a mile and a half.

**DID YOU KNOW THAT ANTARCTIC TOOTHFISH...**

*DISSOSTICHUS MAWSONI*

## ANTARCTIC TOOTHFISH



### GIANT SEA SPIDER

CLASS	<i>PYCNOGONIDA</i>
WEIGHT	UP TO 20 GRAMS
LENGTH	UP TO 10 INCHES
LIFE SPAN	UNKNOWN

NSF.gov | USAP.gov

Antarctic Giant Sea Spiders can grow many times larger than other sea spiders in warmer waters. This is called polar gigantism.

**FUN FACT**

- Are only very distantly related to terrestrial spiders.
- Bat by sucking juices from soft-bodied prey such as jellies, worms, and sea anemones.
- Live on the seafloor.
- Absorb oxygen through small holes in the shells on their legs.
- Dads take care of eggs and young.

**DID YOU KNOW THAT GIANT SEA SPIDERS...**

*PYCNOGONIDA*

## GIANT SEA SPIDER

# ANTARCTIC ANIMALS TRADING CARDS



## 1. PRINT

Load paper into printer and print all the pages single-sided.



## 2. FOLD

Fold along the solid center line to create two sided card.



## 3. GLUE

Adhere the back of cards with a glue stick or double sided tape.



## 4. CUT

Cut along dotted lines to separate each trading card.



National Science Foundation  
WHERE DISCOVERIES BEGIN



UNITED STATES  
Antarctic Program



### EMPEROR PENGUIN

CLASS	AVES
WEIGHT	85 POUNDS
LENGTH	42 INCHES
LIFE SPAN	20 YEARS

NSF.gov | USAP.gov

**LOCATION**

• Emperor Penguins are the only penguin species that lay eggs during the winter.

**FUN FACT**

- Are the biggest of all penguins.
- Huddle close together during the winter to stay warm.
- Moms and Dads take turn keeping their chick warm while the other goes fishing.
- Have a special roll of belly fat to keep their eggs and chicks warm.
- Can hold their breath for up to 20 minutes and swim down to 1,800 feet.

**DID YOU KNOW THAT EMPEROR PENGUINS...**

**LEPTONCHOTES WEDELLII**

**EMPEROR PENGUIN**



### ANTARCTIC KRILL

CLASS	MALACOSTRACA
WEIGHT	2 GRAMS
LENGTH	2.5 INCHES
LIFE SPAN	6 YEARS

NSF.gov | USAP.gov

**LOCATION**

• Eaten by small fish, penguins, and even gigantic whales.

**FUN FACT**

- Eat at the ocean surface at night then swim down to the dark depths during the day.
- Grow bigger than their warmer water relatives.
- Rely on ice cover for protection and to find food.

**DID YOU KNOW THAT ANTARCTIC KRILL...**

**EUPHAUSIA SUPERBA**

**ANTARCTIC KRILL**



### WEDELL SEAL

CLASS	MAMMALIA
WEIGHT	900-1,200 POUNDS
LENGTH	9-10 FEET
LIFE SPAN	30 YEARS

NSF.gov | USAP.gov

**LOCATION**

• The world's southern most mammal thrives in some of the coldest conditions on the planet.

**FUN FACT**

- Like the seals' gentle nature.
- Are studied by scientists in part because they have a thick layer of blubber to keep them warm (up to 3 inches!).
- Can hold their breath for nearly 90 minutes and swim 2,000 feet below the ocean surface.
- Moms will return to the same spot every spring to raise a new pup.

**DID YOU KNOW THAT WEDELL SEALS...**

**LEPTONCHOTES WEDELLII**

**WEDELL SEAL**

# ANTARCTIC ANIMALS TRADING CARDS



## 1. PRINT

Load paper into printer and print all the pages single-sided.



## 2. FOLD

Fold along the solid center line to create two sided card.



## 3. GLUE

Adhere the back of cards with a glue stick or double sided tape.



## 4. CUT

Cut along dotted lines to separate each trading card.



National Science Foundation  
WHERE DISCOVERIES BEGIN




UNITED STATES  
Antarctic Program



### ORCA

CLASS	MAMMALIA
WEIGHT	3,000 - 12,000 POUNDS
LENGTH	22-31 FEET
LIFE SPAN	60-100 YEARS

NSF.gov | USAP.gov



**LOCATION**

Both the largest and smallest killer whale types are found in Antarctica.

**FUN FACT**

- Are the largest member of the dolphin family.
- Are at the top of the marine food chain.
- Have different dietary preferences: some eat fish while other eat penguins, seals or whales.
- Are called "killer" whales, but no orca has ever killed a human.

**DID YOU KNOW THAT ORCAS...**

**ORCINUS ORCA**

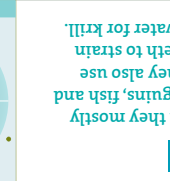
## ORCA



### LEOPARD SEAL

CLASS	MAMMALIA
WEIGHT	700-800 POUNDS
LENGTH	11 FEET
LIFE SPAN	12-15 YEARS

NSF.gov | USAP.gov



**LOCATION**

Though they mostly eat penguins, fish and seals, they also use their teeth to strain ocean water for krill.

**FUN FACT**

- Are named because their spotted coat looks like a leopard.
- Their only predators are orca whales.
- Can occasionally be found as far north as Australia.
- Like to be alone and don't gather together in groups or colonies.

**DID YOU KNOW THAT LEOPARD SEALS...**

**HYDRUGA LEPTONYX**

## LEOPARD SEAL



### WANDERING ALBATROSS

CLASS	AVES
WEIGHT	16 POUNDS
LENGTH	7-8 FEET
LIFE SPAN	45-50 YEARS

NSF.gov | USAP.gov



**LOCATION**

The Wandering Albatross were once luck for sailors.

**FUN FACT**

- Have the largest wingspan of any bird.
- Can glide on the air for hours without flapping their wings.
- Migrate more than 10,000 miles every year.
- Can fly 500 miles in a single day.
- Young are brown and turn white as they age.
- Keep the same partner for life and together raise a chick every two years.

**DID YOU KNOW THAT WANDERING ALBATROSS...**

**DIOMEDEA EXULANS**

## WANDERING ALBATROSS

# ANTARCTIC ANIMALS TRADING CARDS



## 1. PRINT

Load paper into printer and print all the pages single-sided.



## 2. FOLD

Fold along the solid center line to create two sided card.



## 3. GLUE

Adhere the back of cards with a glue stick or double sided tape.



## 4. CUT

Cut along dotted lines to separate each trading card.



National Science Foundation  
WHERE DISCOVERIES BEGIN



UNITED STATES  
Antarctic Program



### HUMPBACK WHALE

CLASS	MAMMALIA
WEIGHT	28-33 TONS
LENGTH	39-52 FEET
LIFE SPAN	60-100 YEARS

NSF.gov | USAP.gov

**FUN FACT**

- Humpback Whales can be as big as a school bus and eat tiny krill and shrimp.
- Humpback Whales can be as big as 3,000 pounds and drink 150 gallons of milk a day.
- Newborns can be as big as 3,000 pounds and drink 150 gallons of milk a day.
- Are no longer endangered.
- Can be distinguished from each other due to unique markings on their tails and bodies.

**DID YOU KNOW THAT HUMPBACK WHALES...**

- Sing to each other over great distances.
- Travel thousands of miles each year to spend summers feeding in cold polar waters and winters in warm tropical waters.
- Newborns can be as big as 3,000 pounds and drink 150 gallons of milk a day.
- Are no longer endangered.
- Can be distinguished from each other due to unique markings on their tails and bodies.

**HUMPBACK WHALE**  
MEGAPTERA NOVAEANGLIAE



### ANTARCTIC SILVERFISH

CLASS	ACTINOPTERYGII
WEIGHT	7 OUNCES
LENGTH	6-10 INCHES
LIFE SPAN	10-20 YEARS

NSF.gov | USAP.gov

**FUN FACT**

- Silverfish are actually pink and only turn silver when they die.
- Adapted so they won't freeze in icy ocean waters.
- Are eaten by seals, penguins, and whales.
- Moms and Dads build nests out of pebbles and take turns fishing to feed the baby chicks.
- Live in both Antarctica and areas around Antarctica.
- Have white eye patches and orange bills.

**DID YOU KNOW THAT ANTARCTIC SILVERFISH...**

- Populations may be at risk because they prefer very cold, ice covered waters.
- Eat tiny swimming animals called "copepods."

**ANTARCTIC SILVERFISH**  
PLEURAGRAMMA ANTARCTICA



### GENTOO PENGUIN

CLASS	AVES
WEIGHT	12-13 POUNDS
LENGTH	22-23 INCHES
LIFE SPAN	15-20 YEARS

NSF.gov | USAP.gov

**FUN FACT**

- The Gentoo Penguin is the fastest swimming bird in the world!
- Can swim as deep as 650 feet and hold their breath for seven minutes.
- Moms and Dads build nests out of pebbles and take turns fishing to feed the baby chicks.
- Live in both Antarctica and areas around Antarctica.
- Have white eye patches and orange bills.

**DID YOU KNOW THAT GENTOO PENGUINS...**

- Populations may be at risk because they prefer very cold, ice covered waters.
- Eat tiny swimming animals called "copepods."

**GENTOO PENGUIN**  
PYGOSCELIS PAPUA

FOLD

FOLD