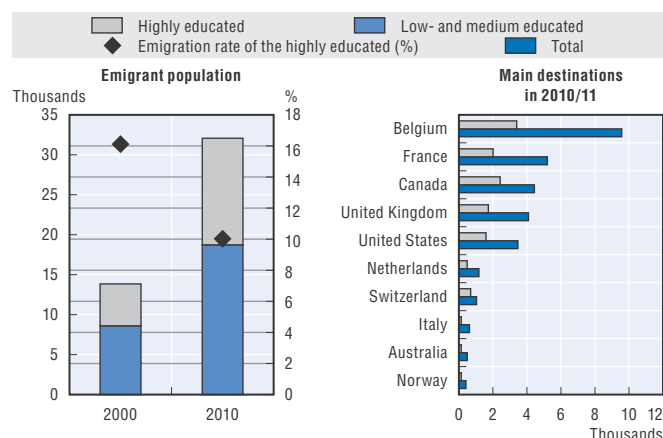


## SUB-SAHARAN AFRICA – RWANDA

Total population 2013 (millions)	11.8	<b>Rwanda compared to:</b>	World	Region
Population growth 2013 (annual, in %)	2.7	Human Development Index (HDI)	151/187	16/46
GDP per capita 2013 (current USD)	639	GDP per capita	172/209	33/48
GDP growth 2013 (annual, in %)	4.7	Emigration rate	179/203	36/48
Poverty rate 2011 (USD PPP 2 a day, in %)	82.28	Emigration rate of the highly educated	70/144	19/31

Age structure of the population (2013): "0-14": 43%; "15-64": 55%; "65+": 2%

### Emigrant population (15+) living in OECD countries



### Emigrant population: Persons born in Rwanda living abroad

	2010/11									2000/01
	OECD and selected non-OECD destinations			OECD destinations			Intra-regional			OECD destinations
	Men	Women	Total	Men	Women	Total	Men	Women	Total	Total
Population 15+										
Emigrant population (thousands)	20.8	23.0	43.8	16.2	19.1	35.3	..	..	..	14.9
Recent emigrants (thousands)	..	..	..	3.1	3.8	6.9	..	..	..	5.4
15-24 (%)	24.6	23.6	24.1	24.9	22.5	23.6	..	..	..	25.2
25-64 (%)	73.4	73.8	73.6	73.5	74.7	74.1	..	..	..	72.8
65+ (%)	1.9	2.6	2.3	1.7	2.8	2.3	..	..	..	2.0
Low educated (%)	31.1	28.8	29.9	25.6	22.3	23.8	..	..	..	27.1
Highly educated (%)	37.1	33.3	35.1	44.6	39.1	41.6	..	..	..	38.0
Total emigration rates (%)	0.7	0.7	0.7	0.6	0.6	0.6	..	..	..	0.3
Emigration rates of the highly educated (%)	9.2	12.4	10.6	8.6	11.9	10.0	..	..	..	16.1

### Main OECD and selected non-OECD destinations in 2010/11

Population 15+	Total		Recent emigrants	Women	Highly educated	15-24	Total in 2000/01
	Thousands	%					
Belgium	12.6	28.7	19.8	55.0	27.0	23.4	5.5
France	5.2	11.8	25.6	55.1	39.4	31.6	1.7
Canada	4.4	10.1	36.6	55.3	54.2	25.4	2.1
United Kingdom	4.1	9.4	15.7	55.8	41.5	23.1	1.9
United States	3.5	7.9	..	52.9	46.7	21.2	1.7
Kenya	2.3	5.2	..	42.7	12.3	33.9	..
Malawi	1.6	3.6	..	47.8	2.5	29.6	..
South Africa	1.6	3.6	..	45.4	14.4	17.7	0.8
Zambia	1.5	3.5	..	45.1	1.3	24.2	..
Netherlands	1.2	2.6	..	42.6	42.1	3.2	..

Indicators of the labour market situation of persons born in Rwanda living in OECD countries

	2000/01			2010/11		
	Men	Women	Total	Men	Women	Total
Population 15-64						
Employment rate (%)	49.9	38.8	44.0	53.2	48.6	50.7
Unemployment rate (%)	24.1	28.8	26.4	18.7	19.2	18.9
Participation rate (%)	65.7	54.5	59.8	65.3	60.2	62.6
<b>Total employed (thousands)</b>	<b>3.3</b>	<b>2.9</b>	<b>6.2</b>	<b>7.7</b>	<b>8.2</b>	<b>15.9</b>
Employment rate of the highly educated (%)	63.8	60.0	62.1	66.4	68.7	67.5
Unemployment rate of the highly educated (%)	22.2	20.6	21.5	16.4	15.0	15.7
Highly educated in low-and medium-skilled jobs (%)	..	..	31.9	..	..	44.0
<b>Highly educated employed (thousands)</b>	<b>1.8</b>	<b>1.4</b>	<b>3.2</b>	<b>3.8</b>	<b>3.9</b>	<b>7.7</b>
<b>Distribution of employment by occupation (%), population 15+</b>						
Highly skilled occupations	..	..	43.6	40.2	40.5	37.1
<i>Of which: Health professionals</i>	..	..	..	..	..	5.8
<i>Of which: Teaching professionals</i>	..	..	..	..	..	3.4
Medium-skilled occupations	..	..	46.8	49.2	53.1	53.0
Low-skilled occupations	..	..	9.7	10.6	6.3	9.9

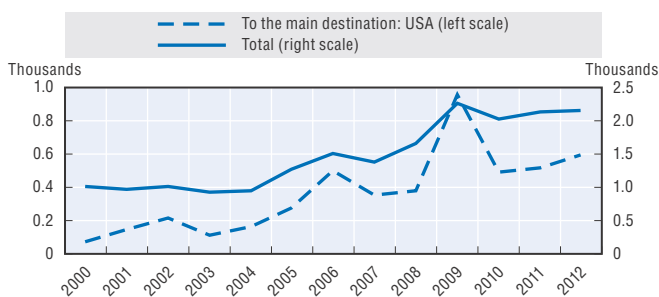
Main OECD destinations by education level in 2010/11 (population 15+)

Highly educated emigrants (thousands)	Change since 2000/01 (%)	Low educated emigrants (thousands)	Change since 2000/01 (%)		
Belgium	3.4	+80.4	Belgium	2.9	+107.8
Canada	2.4	+148.7	France	1.2	+98.4
France	2.0	+268.6	United Kingdom	1.0	+59.3
United Kingdom	1.7	+276.9	Canada	0.6	+55.0
United States	1.6	+100.6	Netherlands	0.4	..
<b>Total</b>	<b>13.4</b>	<b>+153.5</b>	<b>Total</b>	<b>7.6</b>	<b>+103.4</b>

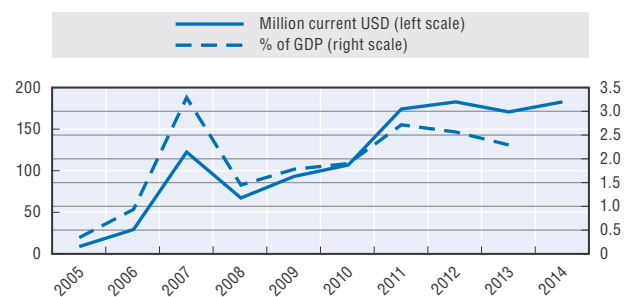
International students from Rwanda in OECD countries

Five main destinations	2008	2010	2012
France	561	599	716
United States	270	447	450
Canada	132	93	126
United Kingdom	91	90	84
Germany	66	61	75
<b>Total</b>	<b>1 397</b>	<b>1 640</b>	<b>1 888</b>

Legal migrant flows to the OECD



Remittance flows



Ten main OECD countries of destination for legal migrants in 2012 (numbers, % of the total flows to the country): USA (592, 0%), CAN (440, 0%), FRA (310, 0%), BEL (201, 0%), DEU (120, 0%), JPN (105, 0%), NLD (67, 0%), SWE (56, 0%), AUS (48, 0%), ITA (44, 0%).

Desire to emigrate, 2007-13

	Women	15-24	Highly educated	Employed	Total
Persons who would move permanently, if they had the opportunity to do so (%)	9	18	..	13	12
<i>Of which: Persons who are planning to move permanently in the next 12 months (%)</i>					12
<i>Of which: Persons who have already made any preparations for this move (e.g. visa application) (%)</i>					19

Three main desired countries of destination: United States (21%), Uganda (14%), Canada (13%).



**From:**  
**Connecting with Emigrants**  
A Global Profile of Diasporas 2015

**Access the complete publication at:**  
<https://doi.org/10.1787/9789264239845-en>

**Please cite this chapter as:**

OECD (2015), "Rwanda", in *Connecting with Emigrants: A Global Profile of Diasporas 2015*, OECD Publishing, Paris.

DOI: <https://doi.org/10.1787/9789264239845-148-en>

This work is published under the responsibility of the Secretary-General of the OECD. The opinions expressed and arguments employed herein do not necessarily reflect the official views of OECD member countries.

This document and any map included herein are without prejudice to the status of or sovereignty over any territory, to the delimitation of international frontiers and boundaries and to the name of any territory, city or area.

You can copy, download or print OECD content for your own use, and you can include excerpts from OECD publications, databases and multimedia products in your own documents, presentations, blogs, websites and teaching materials, provided that suitable acknowledgment of OECD as source and copyright owner is given. All requests for public or commercial use and translation rights should be submitted to [rights@oecd.org](mailto:rights@oecd.org). Requests for permission to photocopy portions of this material for public or commercial use shall be addressed directly to the Copyright Clearance Center (CCC) at [info@copyright.com](mailto:info@copyright.com) or the Centre français d'exploitation du droit de copie (CFC) at [contact@cfcopies.com](mailto:contact@cfcopies.com).