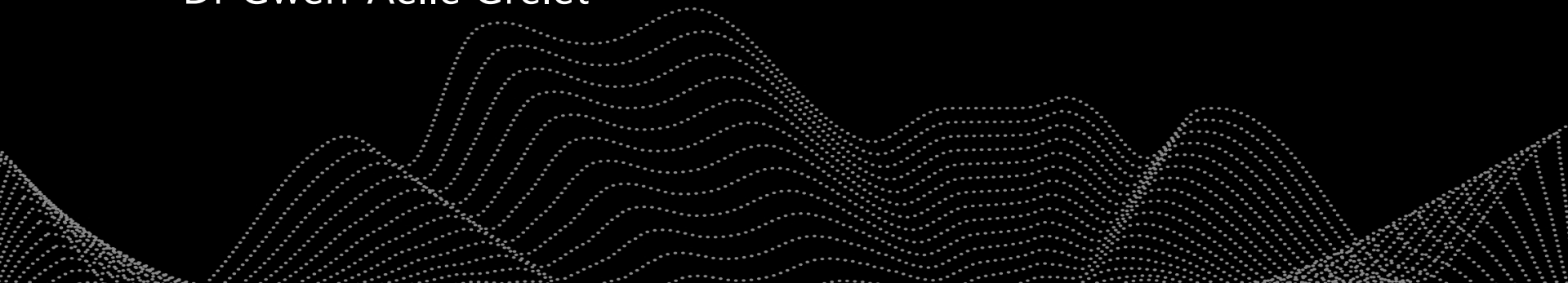




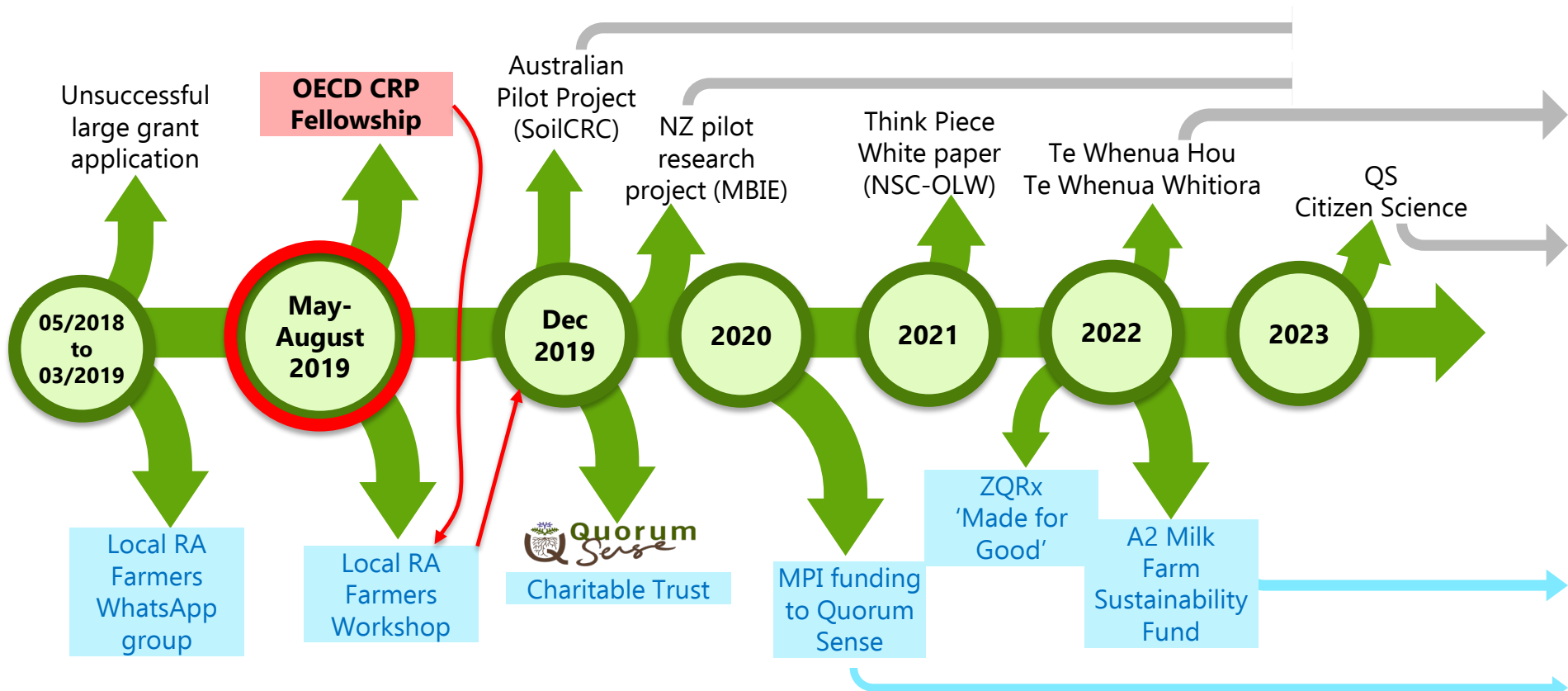
# Connecting with the regenerative agriculture “movement”: a 6-year journey into impact research.

Dr Gwen-Aëlle Grelet





# Merging Research on regenerative agriculture (RA) and Impact



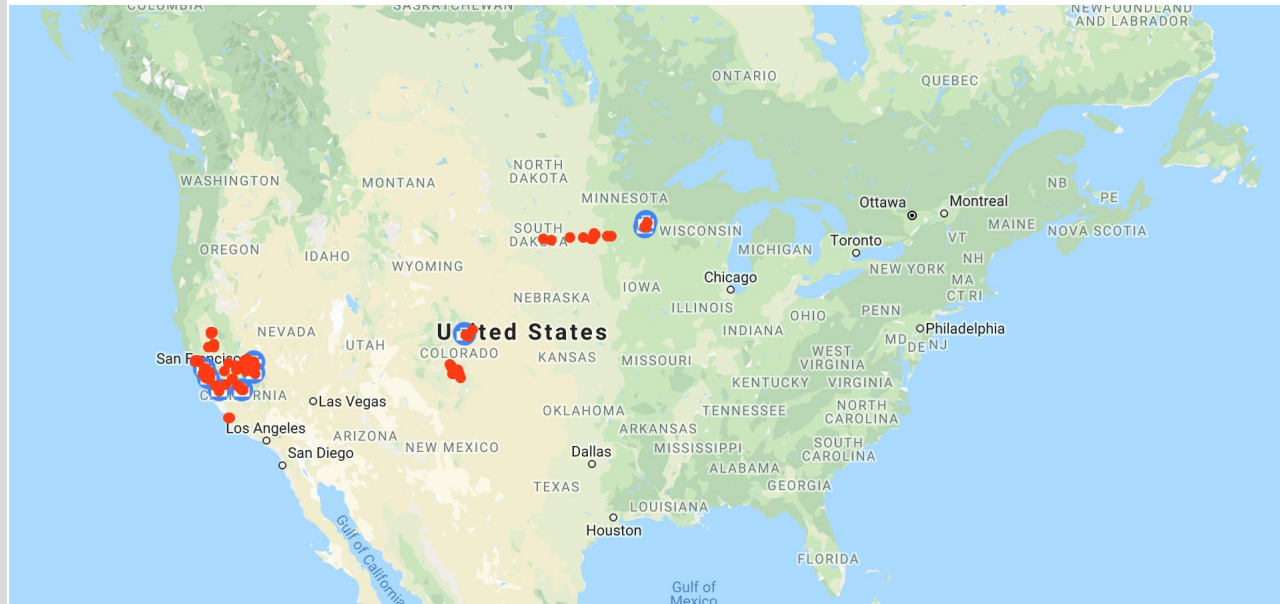


# OECD CRP Fellowship

- Connecting with US leaders



Manaaki Whenua  
Landcare Research



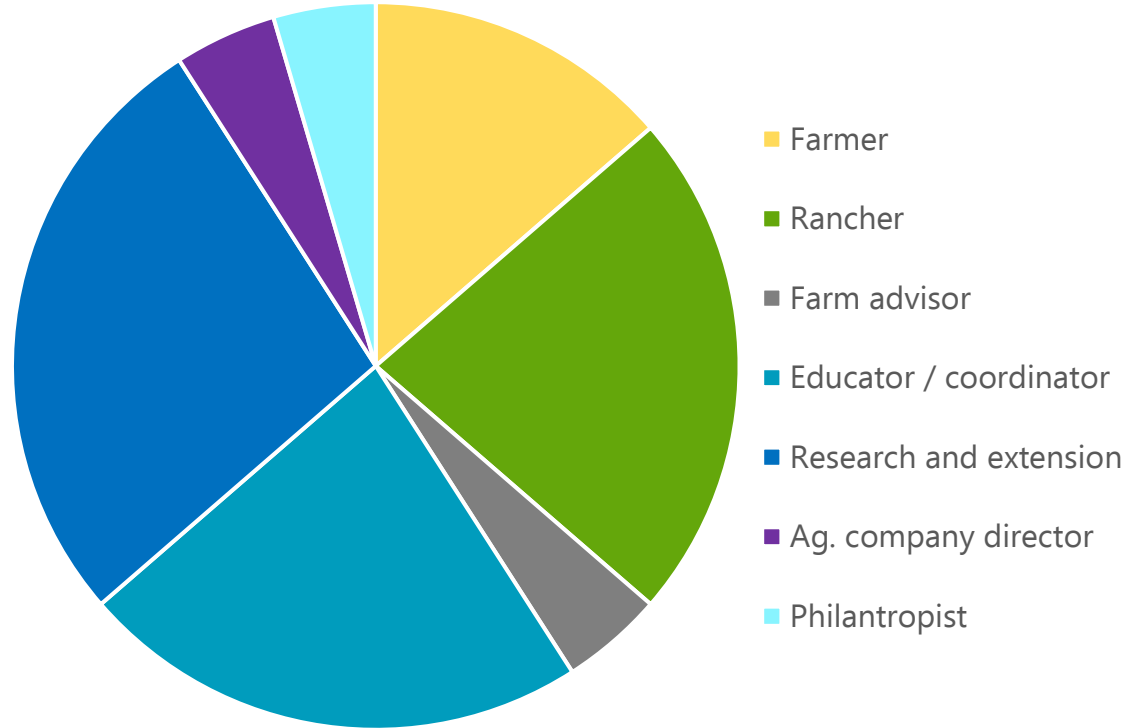


# OECD CRP Fellowship

- Connecting with US leaders



Manaaki Whenua  
Landcare Research





# OECD CRP Fellowship

- Connecting back to NZ farmers



## Dr Gwen Grelet - Global Game Changers in Agriculture

**Quorum Sense Farmer...**  
1.35K subscribers

**Subscribed** ▾

**25**

**Share**



## Governance

- Quorum Sense
- Farmers' peer-to-peer support network



<https://www.quorumsense.org.nz/>

# Research

- Think piece on Regenerative Agriculture



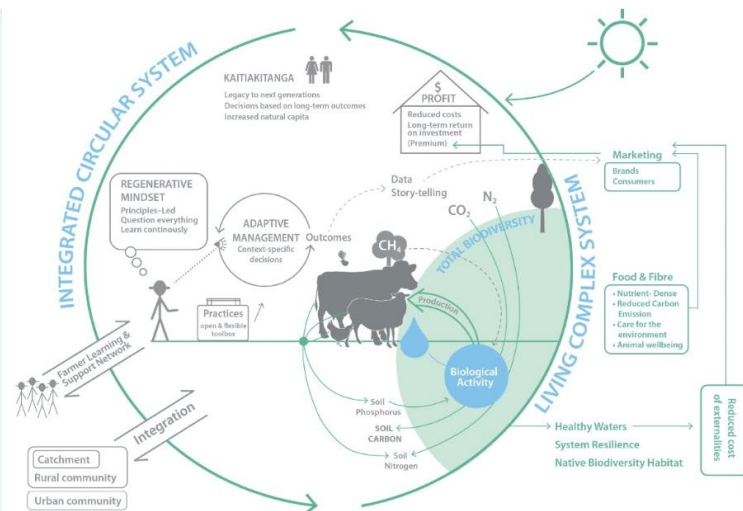
Manaaki Whenua  
Landcare Research



**INCENTIVES FOR CHANGE**

## Regenerative Agriculture White Paper Sets Out Pressing Research Priorities

There is a pressing need for scientific testing of the anecdotal claims being made about regenerative agriculture. A new white paper sets out 17 priority research topics identified by 200+ representatives of New Zealand's agri-food system.



Source: [https://ourlandandwater.nz/news/regen-ag-white-paper\\_feb-2021/](https://ourlandandwater.nz/news/regen-ag-white-paper_feb-2021/)

# Research

- Think piece on Regenerative Agriculture



## Regenerative agriculture in Aotearoa New Zealand– research pathways to build science-based evidence and national narratives.

February 2021

### Authors

**Gwen Grellet** <sup>5569</sup>; **Sam Lang** <sup>7364</sup>; Charles Merfield <sup>88</sup>; Nathaniel Calhoun <sup>26</sup>; Melissa Robson-Williams <sup>35</sup>; Abie Horrocks <sup>38</sup>; Alison Dewes <sup>33</sup>; Angela Clifford <sup>31</sup>; Bryan Stevenson <sup>35</sup>; Caroline Saunders <sup>5</sup>; Carolyn Lister <sup>72</sup>; Chris Perley <sup>92</sup>; Dave Maslen <sup>30</sup>; David Norton <sup>99</sup>; Diana Selbie <sup>4</sup>; Donna Chan <sup>90</sup>; Edgar Burns <sup>101</sup>; Erena Le Heron <sup>49</sup>; Erin Crampton <sup>24</sup>; Fiona Curran-Cournane <sup>58</sup>; Fiona Doolan-Noble <sup>100</sup>; Frank Griffin <sup>100</sup>; Hugh Good <sup>18</sup>; Ina Pinxterhuis <sup>29</sup>; Jacqui Todd <sup>72</sup>; Jeff Su <sup>66</sup>; Jenni Vernon <sup>57</sup>; Jo Cavanagh <sup>55</sup>; Johannes Laubach <sup>55</sup>; John King <sup>82</sup>; Julia Jones <sup>48</sup>; Kate Orwin <sup>55</sup>; Kirstie MacMillan <sup>33</sup>; Maria Minor <sup>56</sup>; Mark Anderson <sup>106</sup>; Matt Buckley <sup>42</sup>; Matt Harcombe <sup>78</sup>; Matt McGlone <sup>55</sup>; Melanie Davidson <sup>72</sup>; Michelle Barry <sup>23</sup>; Mike Taitoko <sup>94</sup>; Miko Kirschbaum <sup>55</sup>; Mitchell Donovan <sup>4</sup>; Nic Conland <sup>83</sup>; Nicky Stanley-Clarke <sup>56</sup>; Nicole Masters <sup>43</sup>; Nicole Schon <sup>4</sup>; Norm Mason <sup>55</sup>; Pablo Gregorini <sup>51</sup>; Paul Mudge <sup>55</sup>; Paul Tapsell <sup>84</sup>; Peter Bruce-Iri <sup>65</sup>; Peter Tait <sup>5</sup>; Pierre Roudier <sup>53</sup>; Rachel Mellor, Richard Teague <sup>83</sup>; Rob Gregory <sup>81</sup>; Robbie Price <sup>55</sup>; Robert Holdaway <sup>53</sup>; Robyn Dynes <sup>4</sup>; Sandra Lavorel <sup>55</sup>; Sarah O'Connell <sup>46</sup>; Selai Leticia <sup>97</sup>; Stella Belliss <sup>55</sup>; Stephen McNeill <sup>55</sup>; Steve Apfelbaum <sup>10</sup>; Tim Driver <sup>5</sup>; Trish Fraser <sup>72</sup>; Troy Baisden <sup>101</sup>; Will Kerner <sup>23</sup>.

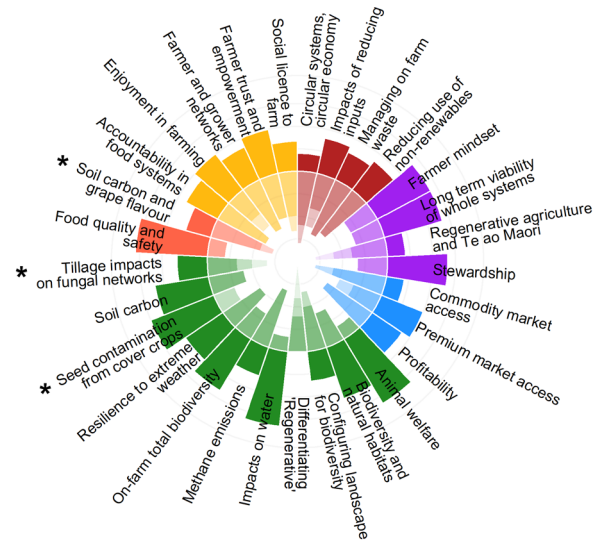
<sup>†</sup>Contact details: [grelletg@landcareresearch.co.nz](mailto:grelletg@landcareresearch.co.nz); [sam@quorumsense.org.nz](mailto:sam@quorumsense.org.nz)

### Reviewers and/or co-authors in the supporting documentation

Brent Clothier <sup>72</sup>; Chris Garland <sup>71</sup>; Chris Phillips <sup>33</sup>; Clint Rissman <sup>40</sup>; Craig Anderson <sup>72</sup>; Dean Stronge <sup>35</sup>; Garth Harmsworth <sup>30</sup>; Iain Gordon <sup>14</sup>; John Saunders <sup>5</sup>; Jules Matthews <sup>43</sup>; Mike Beare <sup>72</sup>; Nick Kirk <sup>35</sup>; Pablo Borrelli <sup>49</sup>; Paul Smith <sup>5</sup>; Pete Millard <sup>35</sup>; Racheal Bryant <sup>51</sup>; Sam McNally <sup>72</sup>; Suzie Greenhalgh <sup>35</sup>; Tom Stephens <sup>12</sup>; Warren King <sup>4</sup>.

### Research participants

Ailsa Robertson <sup>41</sup>; Alexandra Orr <sup>27</sup>; Alison Stewart <sup>38</sup>; Allan Richardson <sup>16</sup>; Ally Orr <sup>27</sup>; Andrew and Joanna Craw <sup>78</sup>; Andrew Bates <sup>103</sup>; Andrew Pitman <sup>38</sup>; Angela McFetridge <sup>18</sup>; Angus Hogg <sup>11</sup>; Anna & Blair (Munta) Nelson <sup>78</sup>; Anna Campbell <sup>1</sup>; Ants Roberts <sup>72</sup>; Bev Trowbridge <sup>60</sup>; Blake Holgate <sup>74</sup>; Cathy Brown <sup>30</sup>; Clare Buchanan <sup>6</sup>; Craig Pauling <sup>22</sup>, <sup>31</sup>, <sup>63</sup>; Craig Stephen, Craig Whiteside <sup>11</sup>; Dana Muir <sup>21</sup>; Dave Lucock <sup>86</sup>; David Birkett <sup>72</sup>; Dean Martin <sup>73</sup>; Dean Williams <sup>40</sup>; Dion Fleeming, Don (Howie) Morrison <sup>78</sup>; Eric Watson <sup>11</sup>; Erica Van Reenan <sup>3</sup>; Gerard Hickey <sup>36</sup>; Gill Naylor <sup>77</sup>; Graham Shepherd <sup>19</sup>; Greg Barclay <sup>80</sup>; Hamish Bielski <sup>78</sup>; Hamish Marr <sup>11</sup>; Hazel Thomson <sup>62</sup>; Helen Moodie <sup>29</sup>; Hugh Ritchie <sup>11</sup>; Ian Dickie <sup>99</sup>; Ian Proudfoot <sup>41</sup>; Ivan Lawrie <sup>38</sup>; James Allen <sup>3</sup>; James Milton <sup>89</sup>; Jamie Gordon <sup>54</sup>; Jarred Mair <sup>57</sup>; Jono Frew <sup>73</sup>; Joseph Watts <sup>71</sup>; Judith Roper-Lindsay <sup>45</sup>; Juliet Ansell <sup>108</sup>; Karen Atkins <sup>13</sup>; Karen Leov <sup>37</sup>; Katie Vickers <sup>34</sup>; Kerry Harmer <sup>49</sup>; Lance Gillespie <sup>72</sup>; Len Ibbotson <sup>23</sup>; Linda Matson







## Secondment to industry

- The New Zealand Merino Company
- Impacting Brands & Customers



## NZ Prime Minister and California Governor Join NZM and Actual To Formalize Tech Regen Partnership



Christchurch, New Zealand - [The New Zealand Merino Company's](#) regenerative wool platform, [ZQRX](#) and Silicon Valley technology platform, [Actual](#) are honored to celebrate the signing of their official, impact driven partnership agreement, 'Made for Good RX', through a ceremony attended by **New Zealand Prime Minister Jacinda Ardern** and **California Governor Gavin Newsom** in San Francisco on Friday, May 27th.

The signing marks a fundamental milestone, as technology and regenerative practices converge to reshape agriculture across the globe, with one of the world's most recognized heads of state on-site to witness the significant endeavor.

For the past decade, John Brakenridge, CEO of [The New Zealand Merino Company](#) (NZM), has invested deeply into the Silicon Valley region - fostering relationships, sharing educational resources, and starting a movement to support his vision that innovation and authenticity is the future of agriculture. What started as a grassroots idea originating through his close ties to the [Stanford Graduate School of Business](#) at Stanford University, quickly transformed into a Primary Sector leadership initiative, as Brakenridge nurtured the future innovators to 'hono tangata, hono whenua, hono ki te ao - strengthen relationships by linking to the land and connecting to the world'. Each year, the initiative titled "[Te Hono](#)," unifies over 260 individuals across businesses, universities and government agencies. Under Brakenridge's leadership, these individuals now make up over 80% of New Zealand's agribusiness.



# Advisory to Industry

- The A2 Milk company
- Informing on-farm investment

## SUPPORTING A SUSTAINABLE FUTURE

The a2 Milk Company's New Zealand Farm Sustainability Fund offers financial awards to contracted a2 Milk™ dairy farms to support projects that promote the achievement of the Company's sustainability objectives. Successful projects will demonstrate an integrated approach to a sustainable future and enable a positive and meaningful impact across the environment in which we operate.



Awards will be made on the basis of the Assessment Criteria set out on the following pages. The a2 Milk Company's sustainability objectives are to:

- Support our people, consumers and communities to be healthy and safe to thrive; and
- Protect nature and the planet for future generations

### Project funding available

A total funding pool of **\$500,000 (excluding GST)** is available.

Funding awards are available up to a maximum of **\$35,000 (excluding GST)** per project. Under special circumstances the Investment Committee will consider higher awards.

Applicant contributions (cash and in-kind) towards the project cost must at least match the award amount as a minimum; the applicant cash contribution must represent at least 50% of the total award amount.

### Eligibility

#### Eligibility to apply

- The Fund is open to contracted a2 Milk™ dairy farms only.
- Nominated projects must relate directly to one or more of the key priority areas outlined below.
- Applicant contributions (cash and in-kind) must be at least equal to the award amount.
- The applicant cash component must represent a minimum of 50% of the total award amount.

#### Key priority areas:

- Lowering GHG emissions
- Increasing on-farm carbon sequestration
- Improving farm system resilience
- Improving water quality and use efficiency
- Enhancing on-farm biodiversity
- Animal wellbeing/health
- Managing and improving soil health

#### Eligible for funding

- Projects that address / adapt to climate change
- Projects that enhance and/or benefit the environment
- Projects that adapt farm management systems for GHG reduction and associated/connected environmental challenges, eg. biodiversity, water quality etc.

#### Not eligible for funding

- Projects that are required as a condition of any resource consent/s
- Projects that require, but have not been awarded, a resource consent
- Land purchase
- Projects that are required under regulation or statute

### Key Dates

Applications open	23 May 2022
Applications close	4 July 2022
Successful applicants notified by	15 August 2022
Project start date	1 September 2022
Progress report due	1 March 2023
Final report due	29 September 2023

### Successful applicants

Each successful applicant will receive a letter of offer to sign and return. Funding will be transferred to the applicant's nominated bank account on receipt of the signed letter of offer. Funding will be provided at 80% of the award at project start and 20% at project end.

### Enquiries

If you have any questions about completing the application form please contact:  
Lisa Shorey | Email: [lisa.shorey@lincoln.ac.nz](mailto:lisa.shorey@lincoln.ac.nz) | Phone: 03 423 0586

### Completing the application form

- Complete the application form in its entirety. Incomplete sections may result in an unsuccessful application.
- Ensure you include 'before' photographs for the application where relevant.
- **Email your completed application form and photos to:** [Applications.RMO@lincoln.ac.nz](mailto:Applications.RMO@lincoln.ac.nz)
- Submission deadline: 5pm, Monday 4 July 2022.

### Developing Your Budget

Before working on your budget, please consider the following:

- Cost estimates should be credible and realistic, and supported by quotes, where possible;
- Each item has to be specific, avoid using terms such as 'miscellaneous' or 'other activities'; and
- For each item, include a short description and provide details of calculations used to arrive at the amount budgeted.



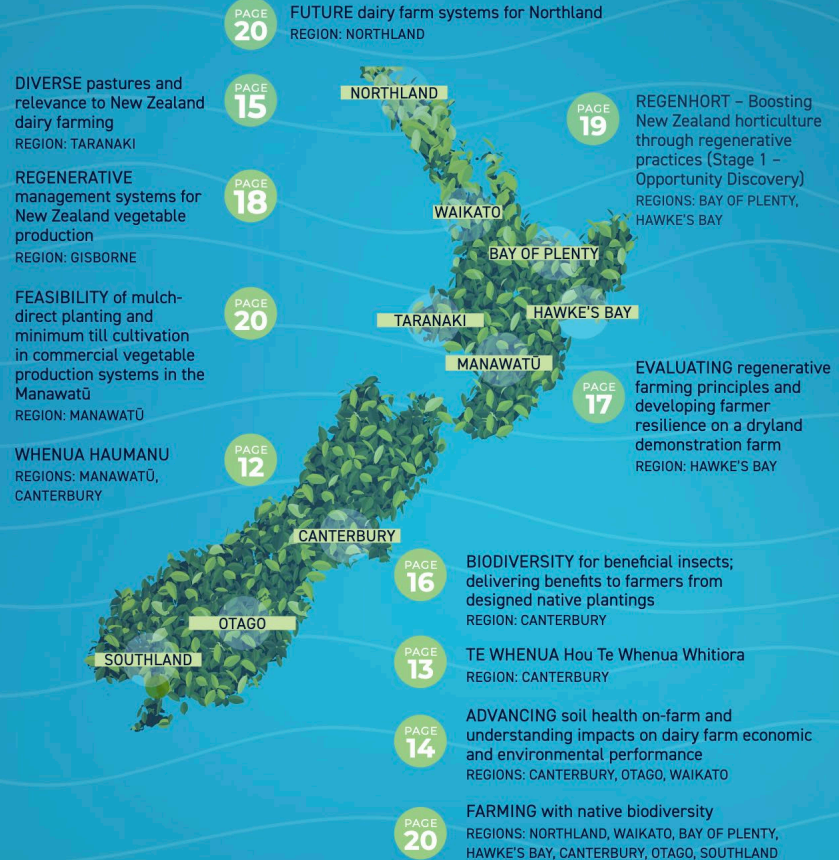
# MPI technical advisory group & Science support to Māori PI

- NZ Ministry for Primary Industries
- National Research Agenda on Regenerative agriculture

Ministry for Primary Industries  
Manatū Ahu Matua



## Regenerative farming practices research across Aotearoa





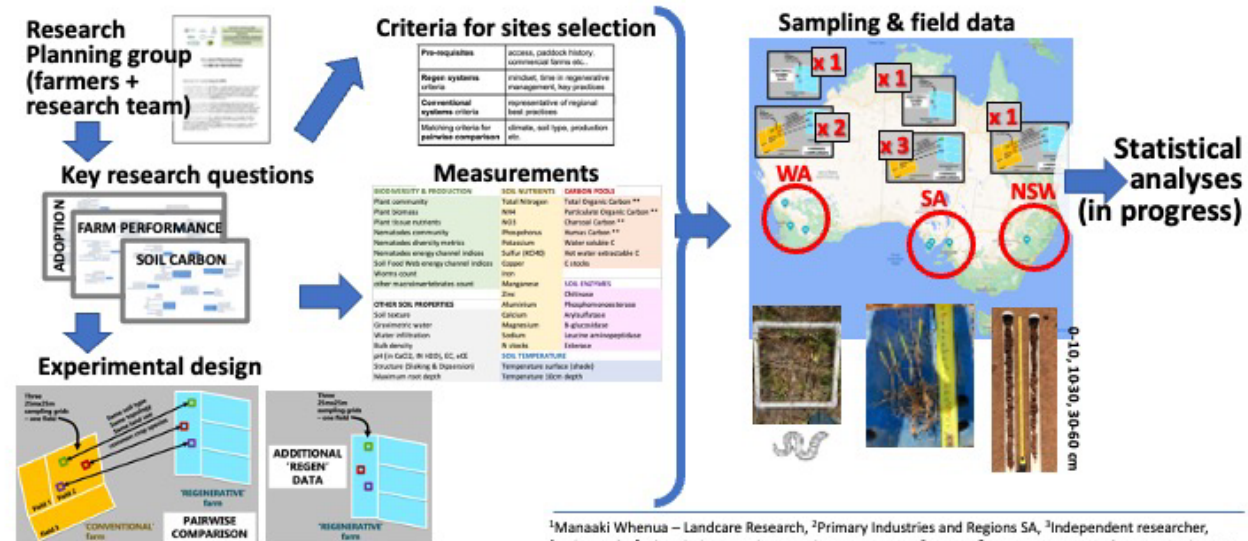
# Domestic and International Research

- Collaboration with Australia
- Research on Regenerative agriculture



## Carbon functionality and Regenerative Agriculture: a co-innovation approach

Grelet GA<sup>1</sup>, Schapel A<sup>2</sup>, Davenport D<sup>3</sup>, Yeates K<sup>4</sup>, Gilbert F<sup>5</sup>, Dennerly C<sup>5</sup>, Allen W<sup>3</sup>, Masters N<sup>3</sup>, Mudge P<sup>1</sup>, Haggerty D<sup>6</sup>, Pontifex G<sup>6</sup>, Sims G<sup>6</sup>, Seis C<sup>6</sup>, Hand G<sup>6</sup>, Royds M<sup>6</sup>, McAlpine S<sup>6</sup>, Kelly N<sup>6</sup>, Ive J<sup>6</sup>, Marsh D<sup>6</sup>, Van Zwieten L<sup>7</sup>



<sup>1</sup>Manaaki Whenua – Landcare Research, <sup>2</sup>Primary Industries and Regions SA, <sup>3</sup>Independent researcher, <sup>4</sup>SoilsForLife, <sup>5</sup>Wheatbelt Natural Research Management, <sup>6</sup>Farmer, <sup>7</sup>NSW Department of Primary Industries

# Citizen Science

- Quorum Sense
- Farmers' network



- Acknowledgements: teams of many
- Huge impact of the OECD CRP fellowship
- Impact of research accelerated through close collaboration with end-users
- The fine line between science and activism

## **Concluding Remarks**