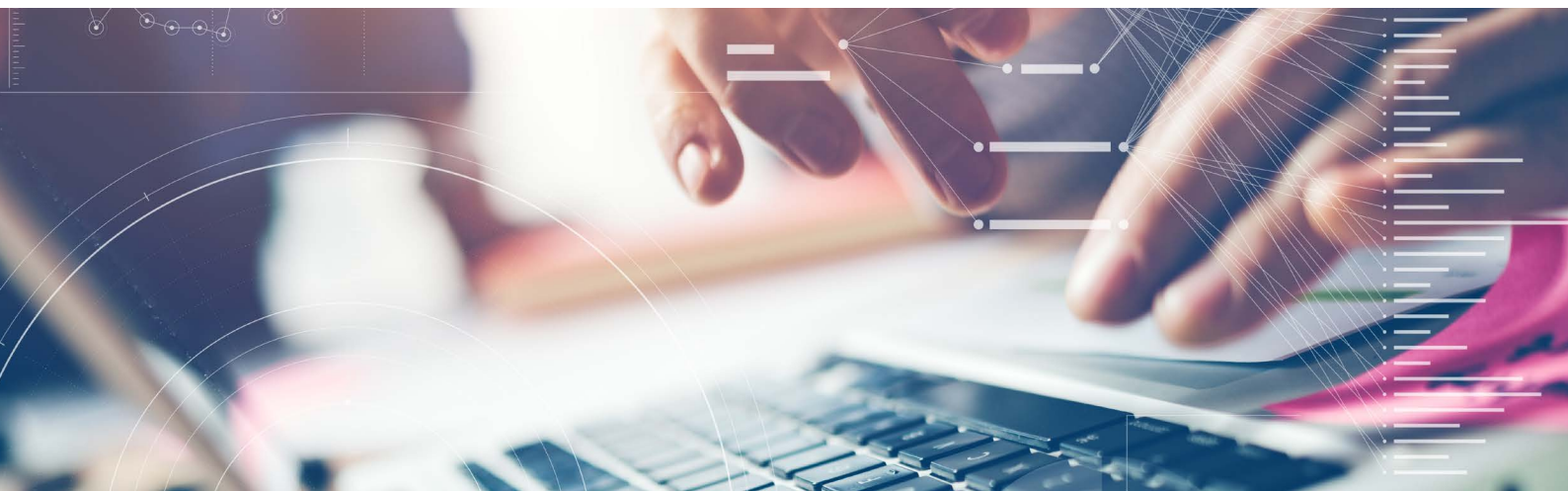


PRODUCT OVERVIEW

# OpenText Accelerate

End-to-end eDiscovery and investigations platform



## Simplify eDiscovery

with end-to-end functionality in a single platform



**Increase efficiency and cost savings** with built-in generative AI, analytics, and technology-assisted review



**Proactively manage and mitigate risk**



**Improve data-driven decision-making**

**Exploding data volumes and sources, heightened regulatory requirements, and increased data privacy and cybersecurity risks are driving up the costs and risks of eDiscovery, investigations, and regulatory compliance mandates. While litigation budgets are under scrutiny, legal teams are still expected to deliver superior results on time.**

**To achieve efficiency and save costs, legal teams are looking to end-to-end solutions with integrated AI, analytics, machine learning, rich visualizations, and automation.**

OpenText™ Accelerate™ is a flexible, powerful, end-to-end eDiscovery and investigations platform incorporating proprietary AI, advanced analytics, machine learning, and automation, including new Aviator generative AI summarization and review.

Accelerate delivers best-in-class investigative capabilities in a fully integrated, intuitive review interface to help legal teams get to facts that matter sooner and inform case strategy.

## Simplify eDiscovery with end-to-end functionality in a single platform

Accelerate empowers users to take greater control over ingesting, collecting, and culling data intelligently. By automating as many manual tasks as possible, staff can review only what is necessary, reducing costs and risks.

Accelerate streamlines and simplifies eDiscovery and investigations. It integrates data exploration and identification, collection, processing, analysis, review, and production in a single platform delivered by a single vendor. Accelerate offers front-end analytics for true early case assessment and data investigation, driving rapid data insight and faster case strategy and decisions. Integrated AI, analytics, and review capabilities allow for a streamlined process that quickly surfaces relevant content.

## OpenText Professional Services

eDiscovery Advisory Services

Managed Document Review

Recon Investigations Service

Breach Response Analysis and Reporting

Digital Forensics and Collections

Software Consulting and Implementation

## Increase efficiency and save costs with built-in AI, analytics, technology-assisted review and Aviator generative AI review

Built-in AI, data analytics, and technology-assisted review (TAR) capabilities provide legal teams with early and important insights to quickly understand and intelligently organize data. Improve review efficiency and save costs by minimizing the volume of documents warranting legal review. Choose from Accelerate's original TAR continuous-machine learning workflow or the new continuous-active learning workflow and integrated contextual diversity algorithm, which surfaces documents from contextually diverse pockets of data to ensure that nothing is overlooked.

Accelerate now features generative-AI powered Aviator Review to take review efficiency and automation to new heights. Because we understand how important budget is when reviewing digital data. Aviator Review offers the unique ability to refine your review criteria on a sample before committing to the full dataset and see estimated Aviator Review costs up front.

Other features include:

- Predictive filters and predictive searching surface conceptually similar documents on the fly without requiring a full TAR workflow.
- Automated phrase and concept analysis intelligently organize documents to further speed review.
- Stackable Smart Filters leverage a wide range of metadata to efficiently narrow in on relevant content.
- Extensive reporting throughout the platform to keep projects on time and within budget.
- Overturn reporting to help standardize coding decisions and avoid rework late in projects.

## Proactively manage and mitigate risk

Integrated capabilities and standardized processes minimize the risk of missing critical information or inadvertently disclosing privileged, sensitive, or private information. Features include:

- Automated sensitive data detection finds common or custom patterns. Pre-configured patterns are embedded in search filters for easy access and effective use.
- Automated entity extraction locates people's names unrelated to a data privacy rights request.
- Bulk redaction capabilities streamline the process and ensure that redactions are applied consistently across the data set.
- Inverse redactions efficiently redact all data within a document except for what is selected, streamlining effort when the majority of content needs to be redacted.
- Self-triggered quality assurance checks help assure risk-free production.

***“The OpenText Axcelerate platform has been elegant from the beginning. It was a smooth transition. We were able to reduce costs materially, almost immediately. I wish we had done it sooner.”***

Sam Castor, EVP, Switch

[Read the Success story](#)

***“OpenText Axcelerate changes the way that we investigate. It has become a much more intuitive and iterative process. We’re embedding that in the culture of our investigations now.”***

Richard Day  
Serious Fraud Office

[Read the Success story](#)

## Leverage AI to improve data-driven decision-making

With embedded Aviator generative AI capabilities and advanced analytics, legal teams can conduct effective investigations and early case assessment (ECA) for enhanced data-driven strategy. Features include:

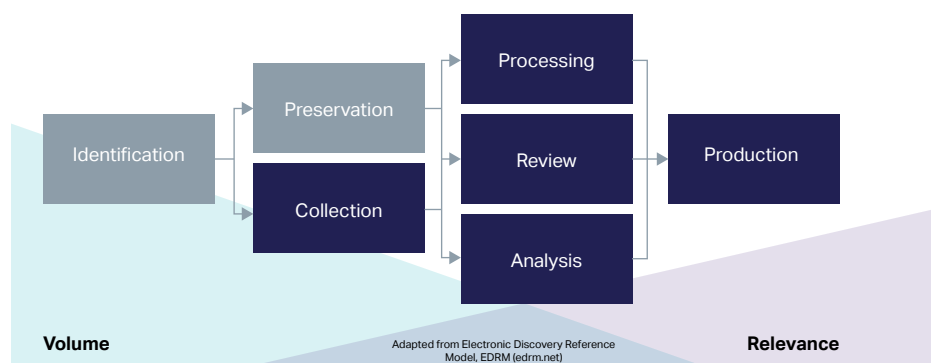
- Automatic identification and AI-generated summarization of key documents for rapid and defensible ECA and review strategy.
- AI-generated natural language summaries of concept labels for intuitive contextual insight.<sup>1</sup>
- Advanced text analytics surface sentiment within documents, distinguish fact from opinion, and identify the people, places, and organizations.

## Flexible deployment models

Axcelerate provides enterprises with the flexibility necessary for managing and securing sensitive data via various deployment options:

- **Cloud-based, on-demand model for single matters or as a subscription**  
Axcelerate provides enterprises with fully inclusive access to powerful analytics, machine learning, and review capabilities via ultra-secure cloud infrastructure with flexible service options.
- **On-premises server-based solution**  
Data ingestion, processing, ECA, review, and production capabilities are all behind the corporate firewall. Highly scalable for data volumes, active matters, and number of users.
- **Hybrid approach**  
Deploy OpenText™ Axcelerate™ ECA on premises with analytics and review capabilities running in the cloud. With one click, data can be transferred from the on-premises environment to the cloud for review.
- **Air-gapped temporary portable solution**  
Axcelerate Portable Solution is an appliance-based full instance of Axcelerate for temporary, on-site projects. This simplifies protecting against cyber threats and compliance with country- or location-specific data privacy requirements.

## opentext™ | Axcelerate™

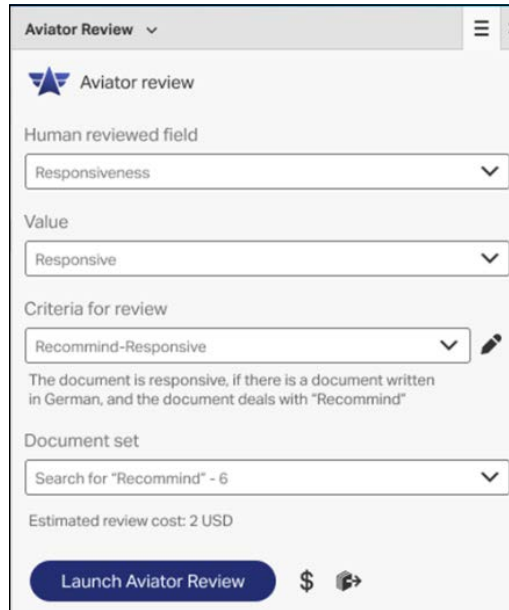


## OpenText Axcelerate features

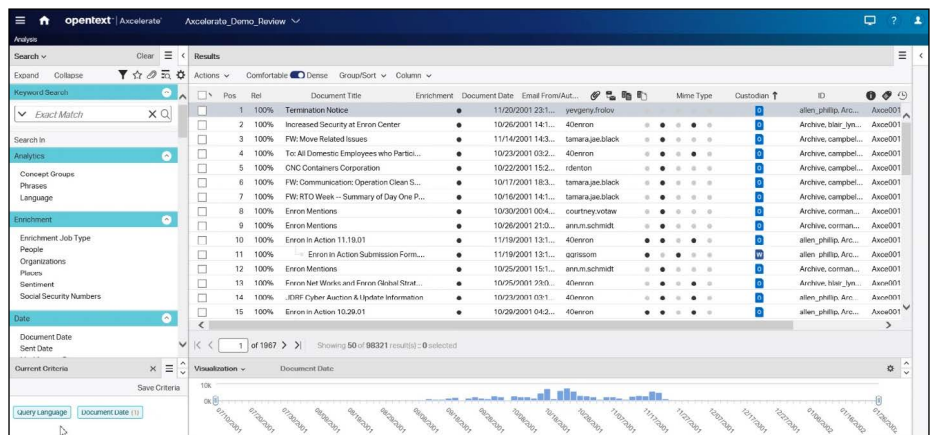
<b>Legal Aviator (Cloud)</b>	<p>This central AI nervous system offers:</p> <ul style="list-style-type: none"> <li>• Greater control and cost certainty with Aviator Review’s unique ability to test and refine review criteria against sample sets of data and obtain cost estimates prior to submitting the criteria to the large language model (LLM) to run against the entire data set.</li> <li>• AI-generated summaries of key documents to help teams rapidly identify, understand, and validate key evidence and fact patterns.</li> <li>• AI-generated natural language summaries of concept labels for intuitive contextual insight.</li> </ul>
<b>Connectors</b>	Leverage extensive turn-key connectors to general databases, directories, file systems and content management platforms (available for Axcelerate on-premises and Axcelerate Private Cloud installations).
<b>Smartphone data processing</b>	Process a broad set of data from smartphones, including SMS, MMS, loose files, chat, geolocation data, browsing data including history and searches, calendar entries and notes, among others, via parser support for Cellebrite™, XRY™ and Oxygen™.
<b>Multi-faceted concurrent search</b>	Run multiple, concurrent queries, powered by OpenText MindServer AI-enhanced search, which saves time from running sequential individual searches and delivers more accurate results.
<b>Early case assessment</b>	Create highly targeted data sets to speed time to review, with processing, OCR, deduplication and deNISTing. Organize documents into families by content similarity.
<b>Machine translation</b>	Use seamless Amazon Translate integration or Vertion services to translate documents in bulk or individually from virtually any language into any other language thereby providing the flexibility to conduct review in multiple languages or to standardize review in any preferred language.
<b>Smart Filters</b>	Rapidly isolate key data with dozens of stackable filters based on metadata, content and customizable work-product.
<b>Predictive filters</b>	Find relevant data faster with predictive filters, which learn from human review decisions to predict the search terms and parameters most likely to uncover valuable insights, such as which content stores are probable sources of relevant content, what content is most likely to be privileged and which custodians are most likely to have relevant documents.
<b>Predictive search</b>	“Find more like me” with technology-assisted review functionality on the fly, without any workflow or sampling requirements. Compare documents known to be relevant against the entire corpus or execute search queries and use selected results to find other documents with similar content.
<b>End-of-branch email analysis</b>	Limit review to the most inclusive emails at the end of each branch and spot any missing or unique messages for dramatic time savings.
<b>Browser-agnostic viewer</b>	View documents in any browser with high-fidelity rendering, efficient pre-caching and smart tagging controls.
<b>End to end Audio/Video support (Cloud)</b>	Access the contents of audio and video (AV) files in both native and transcribed textual format, making it possible to search, analyze, redact and produce AV files quickly and easily.
<b>Microsoft® Excel® support (Cloud)</b>	View, search and redact Excel files with ease

**OpenText Axcelerate features**

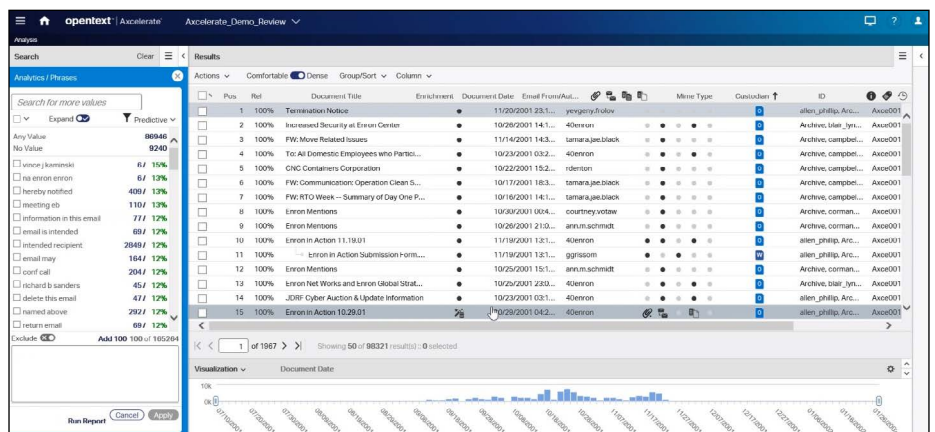
<b>Chat data support</b>	Expedite review and analysis of chat data in an intuitive interface
<b>Negative proximity operator</b>	Reduce false hits by ignoring keyword matches when the second term is used extraneously (e.g., in email signature lines). Only returns term1 keywords if they are a specified number of words away from term2 keywords.
<b>Concept analysis</b>	Group documents based on the contextual meaning of associated common phrases, allowing reviewers to gain context beyond keywords and code names.
<b>Sentiment analysis</b>	Gain a faster and deeper understanding of data by categorizing documents by whether they contain positive, negative or neutral sentiments.
<b>Entity identification</b>	Achieve additional layers of insight for communications analysis and investigations. Axcelerate Smart Filters include integrated detection tools that automatically surface the names of people, places and organizations.
<b>Multilingual analytics</b>	Enrich unstructured data with powerful analytics on a language-agnostic basis, including pictorial languages like Chinese, Japanese and Korean.
<b>Production wizard</b>	Select from pre-configured options for how the discovery set is presented.
<b>Case management</b>	Seamlessly send data to Opus 2 Case Management, a leading case management solution, to ensure that relevant information uncovered during review is reliably included in case management processes to optimize case strategy, depositions, negotiations, motions and the conduct of trials.
<b>Hypergraph communications map</b>	Analyze parties, domains, activity levels and timeframes around all communications of interest while visualizing email and chat connections.
<b>Technology-assisted review</b>	Choose from Axcelerate's original continuous machine learning algorithm or the new continuous active learning protocol and companion contextual diversity algorithm (Cloud only) to get to the relevant facts faster and overcome reviewer bias that may miss important information.
<b>Automated document compare</b>	Quickly identify subtle differences – modifications, additions, or deletions - between any two documents.
<b>Self-service drag and drop processing (Cloud)</b>	Gain greater control and flexibility when time and budget call for rapid data ingestion, processing and upload.
<b>Password bank</b>	Speed processing time and minimize errors by adding a list of known passwords for use during processing to attempt decryption of password-protected Microsoft Office and Adobe PDF documents.
<b>Automated data detection and redaction</b>	Auto-identify sensitive content in any identifiable pattern, such as PII, PCI, PHI, and NPI, and automatically redact it in bulk before review or production. Redaction reasons can be reviewed and edited by individual document or groups of documents.
<b>Visualization</b>	Axcelerate Visualizer provides highly accessible visualized display of potentially relevant content, with key indicators and criteria clearly presented, to facilitate fast and accurate review. Axcelerate Visualizer Heat Maps enable multi-factor visual analytics to expose associations within data for deeper insights.



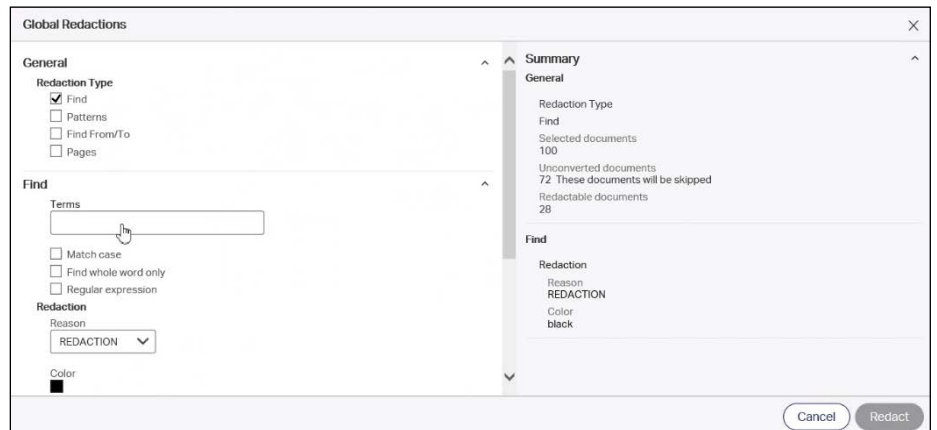
New Aviator Review takes e-discovery efficiency to new heights.



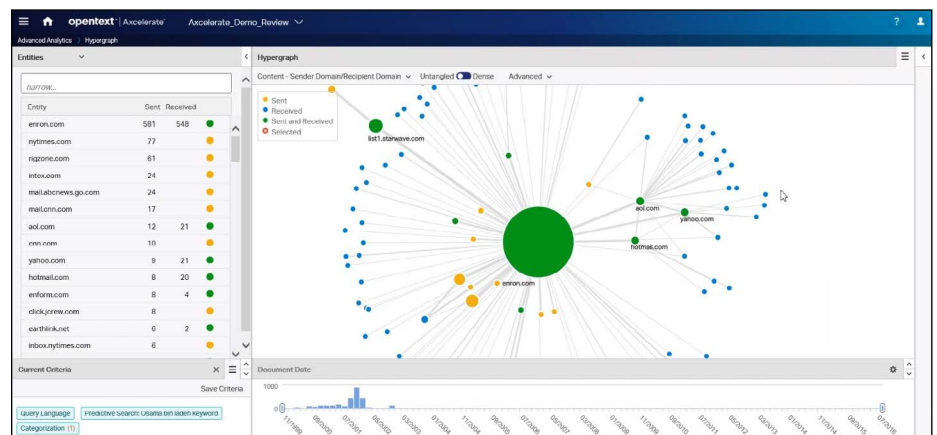
Rapidly isolate key data with Smart Filters.



Search with precision and breadth to narrow results and discover previously uncovered themes with Phrase Analysis.



Automatically redact sensitive data in bulk before review or production



Analyze parties, domains, activity levels and timeframes for all communications of interest with hypergraph communications mapping.

OpenText  
Discovery solutions

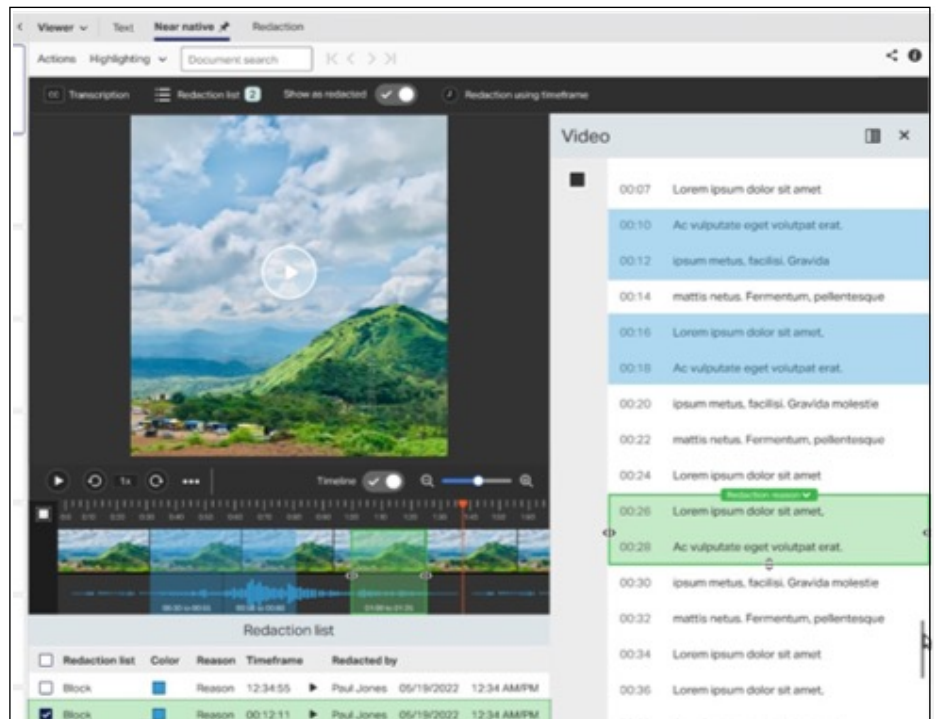
Optimizing subject  
rights requests with  
OpenText Axcelerate

OpenText Axcelerate  
Portable Solution

OpenText Managed  
Document Review

## OpenText™ Axcelerate™ connectors:

- Extensive support to common data sources, such as Microsoft®, Google™ and EnCase™ L01 and EX01 formats, including file shares, email and ECM systems and cloud repositories, among others. Available for on-premises and Axcelerate Private Cloud deployments.
- OpenText Axcelerate chat support:
  - Generic and dedicated parsers to support chat data from virtually any source. Dedicated connectors for Microsoft Teams® and Slack™.
- OpenText Axcelerate smartphone data processing:
  - Process a wide variety of smartphone data through support for Cellebrite™, XRY™ and Oxygen™.



Access the contents of audio and video (AV) files in both native and transcribed textual format, making it possible to search, analyze, redact and produce AV files quickly and easily.

## About OpenText

OpenText, The Information Company, enables organizations to gain insight through market leading information management solutions, on-premises or in the cloud. For more information about OpenText (NASDAQ: OTEX, TSX: OTEX) visit: [opentext.com](https://www.opentext.com).

## Connect with us:

- [OpenText CEO Mark Barrenechea's blog](#)
- [Twitter](#) | [LinkedIn](#)