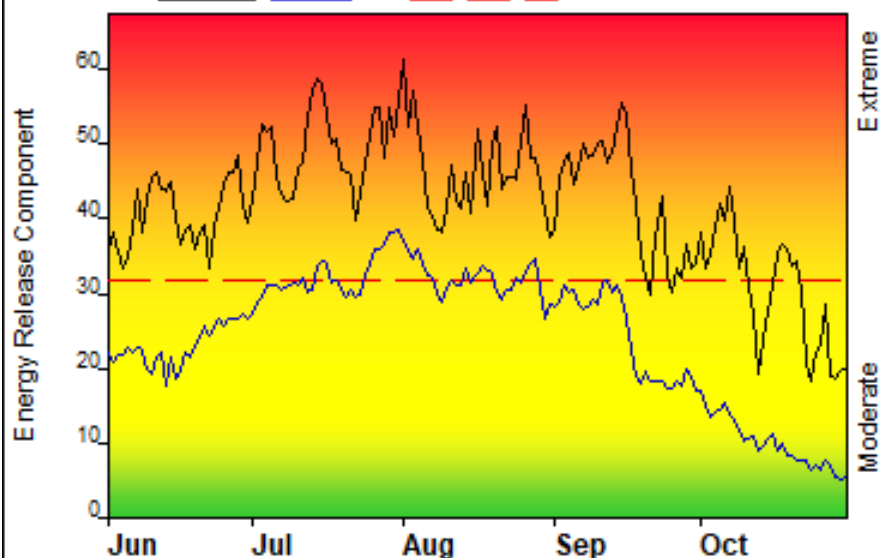


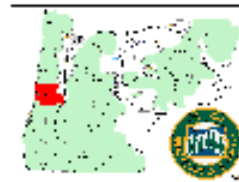
FIRE DANGER -- Western Lane District

Maximum, Average, and 70th Percentile, based on 15 years data



Fire Danger Area:

- ◆ ODF - Western Lane
- ◆ Fire Wx Zone 803, 812
- ◆ Hight Pt. Village Cr (1:3)
- * Meets NWCG Wx Station Standards



Fire Danger Interpretation:

- EXTREME** -- Use extreme caution
- High** -- Watch for change
- Moderate** -- Lower Potential, but always be aware

Maximum -- Highest Energy Release Component by day for 2007 - 2021

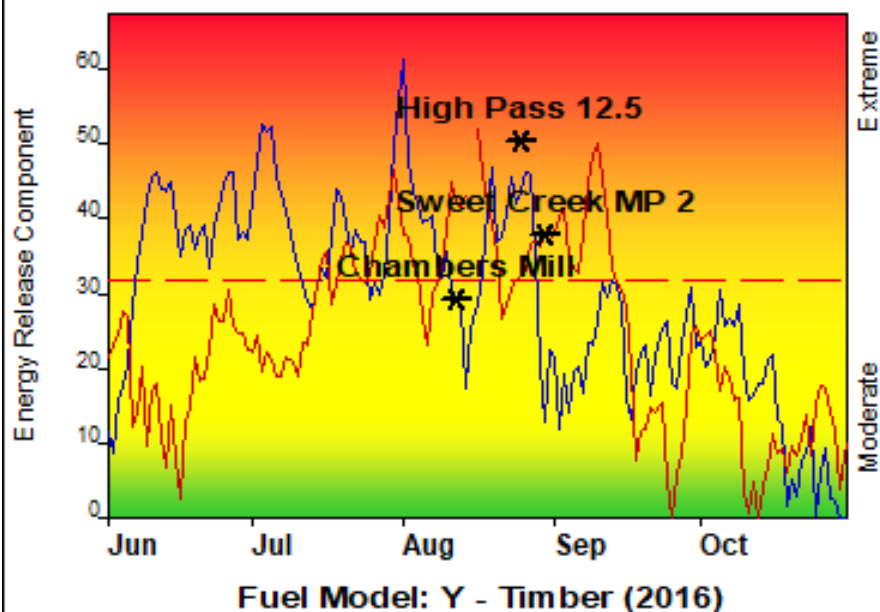
Average -- shows peak fire season over 15 years (2294 observations)

70th Percentile -- 30% of the 2294 days from 2007 - 2021 had an Energy Release Component above 31

Local Thresholds - Watch out:

- Combinations of any of these factors can greatly increase fire behavior:
- 20' Wind Speed over 12 mph, RH less than 30%,
 - Temperature over 85, 1000-Hour Fuel Moisture less than 14

Years to Remember: 2015 2020



Remember what Fire Danger tells you:

- ✓ Energy Release Component gives seasonal trends calculated from temperature, humidity, daily temperature & rh ranges, and precip duration.
- ✓ Wind is NOT part of ERC calculation.
- ✓ Watch local conditions and variations across the landscape -- Fuel, Weather, Topography.
- ✓ Listen to weather forecasts -- especially WIND.

Past Experience:

As live fuels begin to cure out expect fire growth to be more rapid. 62% of large fires occur at an ERC of 30 or higher (70th %ile). Strong north winds are prevalent in the summer, with East Winds (Foehn) occurring in late summer and fall. Steep slopes cause rapid fire spread in areas of open canopies and slash units. The coastal region of the district experiences lower fire danger, but watch for strong north winds in Gorse and Beach Grass fuel types during mid-summer

Responsible Agency: ODF, Fire Environment Working Group
FF+5.0 build 20210317 04/19/2022-13:24 (\\file01\Public\PROPUB\FEWG\...Western Lane)

Design by NWCG Fire Danger Working Team