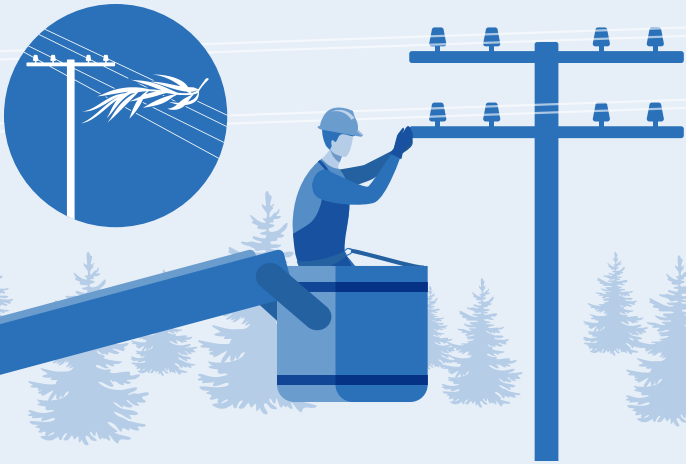


Wildfire Safety and Resilience

At Pacific Power, your safety is our top priority. In addition to hardening our system, we've upgraded our power equipment with settings and devices to reduce wildfire risk. Monitoring conditions and risk in real-time allows us to take action where needed.

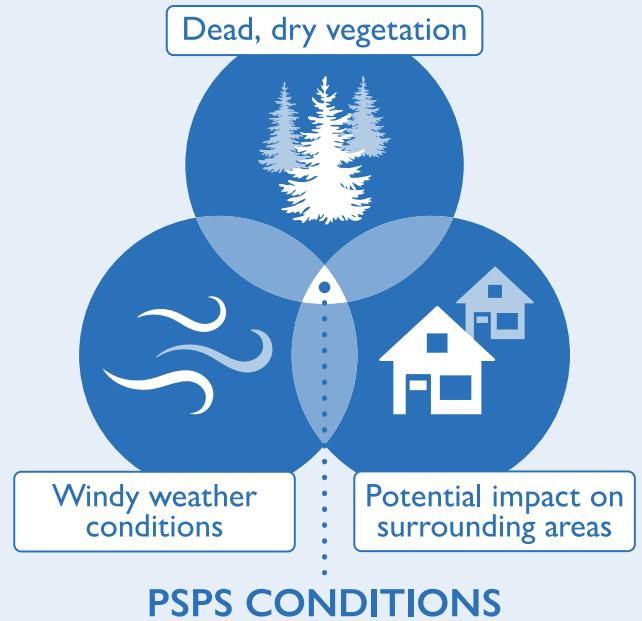
TAKING ACTION TO REDUCE RISK

Enhanced Safety Settings



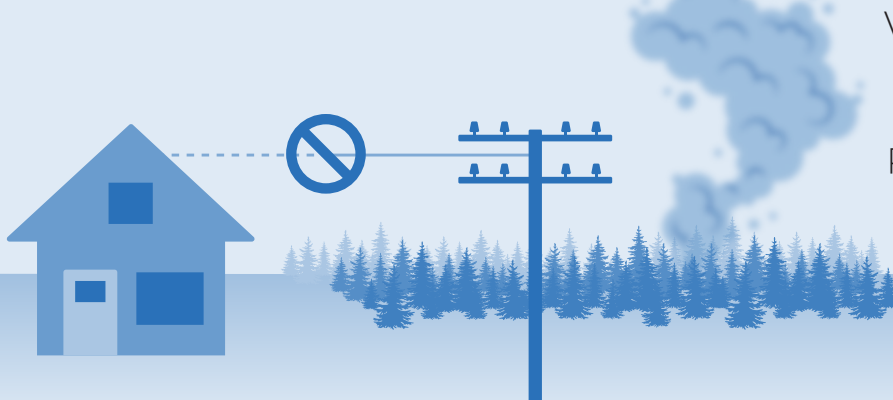
We may adjust settings on power lines to reduce ignitions. If debris comes in contact with our lines, they will de-energize within fractions of a second.

Public Safety Power Shutoff



We may temporarily turn off power to targeted areas when weather conditions create higher risk for wildfire.

Emergency De-Energization



When an active wildfire gets too close to our equipment, we may turn off power to reduce the risk of ignition, protect first responders and keep our customers and communities safe.

STAY SAFE, ALERT AND INFORMED

- Update your contact information and sign up for alerts at [PacificPower.net/Alerts](https://www.pacificpower.net/alerts) or call 1-888-221-7070.
- We will send important safety information via text, phone and email based on your preferences.