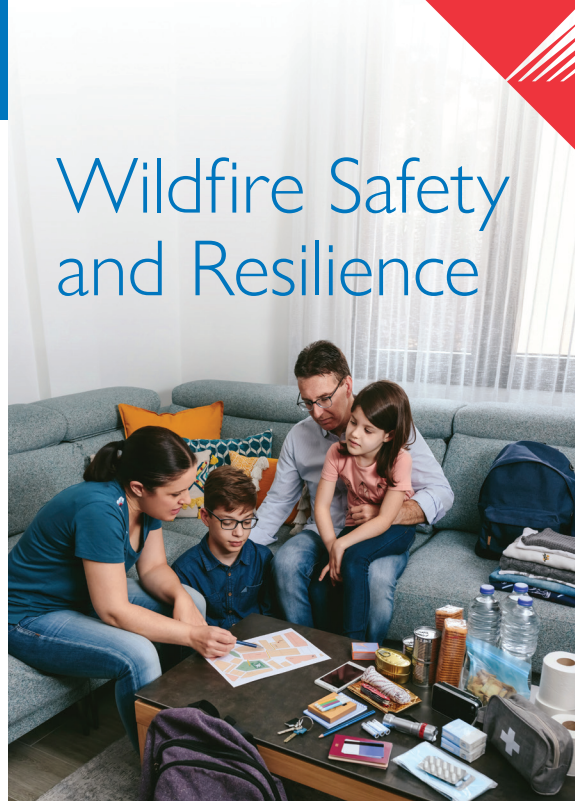


What you can do

- Update your contact information and sign up for alerts at [PacificPower.net/Alerts](https://www.pacificpower.net/alerts) or call **1-888-221-7070**.
- Get outage and restoration updates at [PacificPower.net/Outages](https://www.pacificpower.net/outages).
- Prepare for outages with tips at [PacificPower.net/Prepare](https://www.pacificpower.net/prepare).
- Consider backup power options if you have medical needs. Learn more at [PacificPower.net/BackupPower](https://www.pacificpower.net/backuppower).



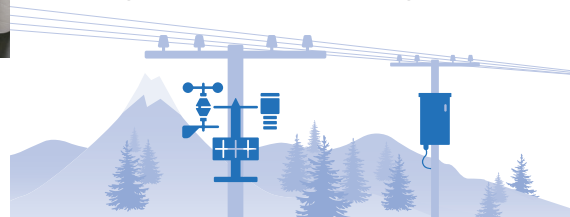
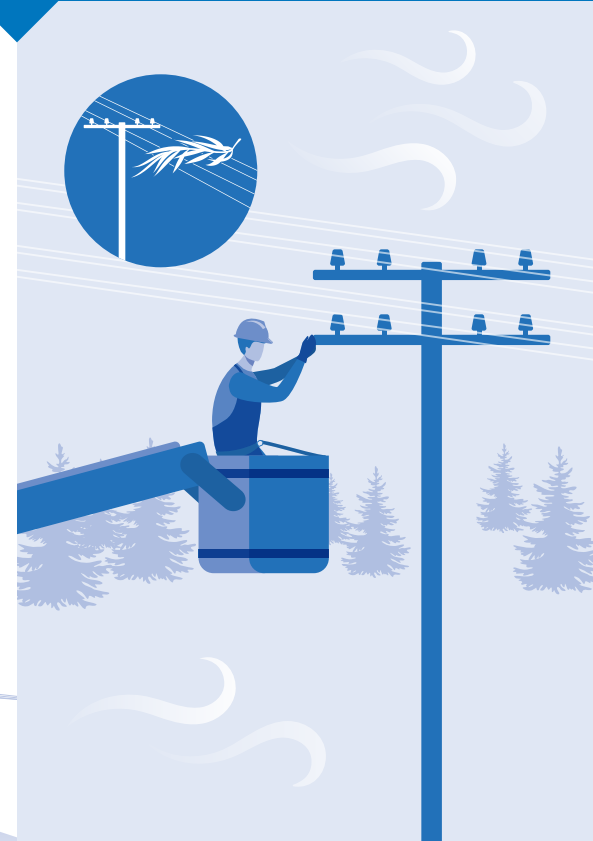
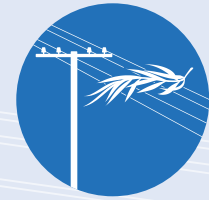
Wildfire Safety and Resilience



Enhanced Safety Settings

At Pacific Power, we're dedicated to ensuring your safety, especially when wildfire risk is high.

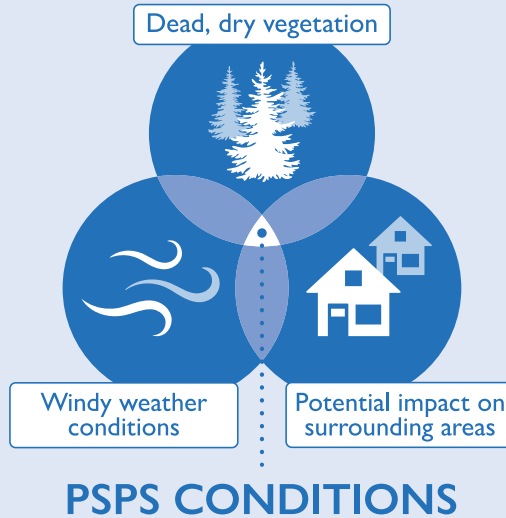
- When fire risk is high, we may use enhanced safety settings on power lines to reduce the potential for equipment to start a fire.
- If a power line comes in contact with debris, it will deactivate within fractions of a second.
- Our teams will then inspect the equipment for damage and make necessary repairs before restoring power.
- Customers may experience more frequent outages because of these settings.



Public Safety Power Shutoff

Using data from our extensive network of weather stations for daily forecasting and combining it with historic fire risk modeling informs our situational awareness.

- We monitor for elevated fire risk conditions like high temperatures, windy weather and dry or dead vegetation.
- In extreme wildfire conditions, Pacific Power may use a temporary power shutoff, known as a Public Safety Power Shutoff, to reduce the chance of electrical equipment starting a wildfire.
- In these situations, we will attempt to provide advance warning via various communication channels and updates throughout the event.
- Once weather conditions improve, we can inspect equipment and safely restore power.



Emergency De-Energization

We identify risks promptly and take focused action when required, including, in certain specific situations, temporarily shutting off power in targeted areas.

- We closely monitor wildfires near our equipment and power lines.
- If a fire gets too close, we will turn off the power.
- This reduces the risk of any additional fires starting and protects first responders and keeps our customers and communities safe.
- Customers may experience more frequent outages.
- Once the fire risk has passed and we can inspect for damage, make repairs and turn the power back on.

