



Right Tree, Right Place

Guide to planting safely near overhead powerlines

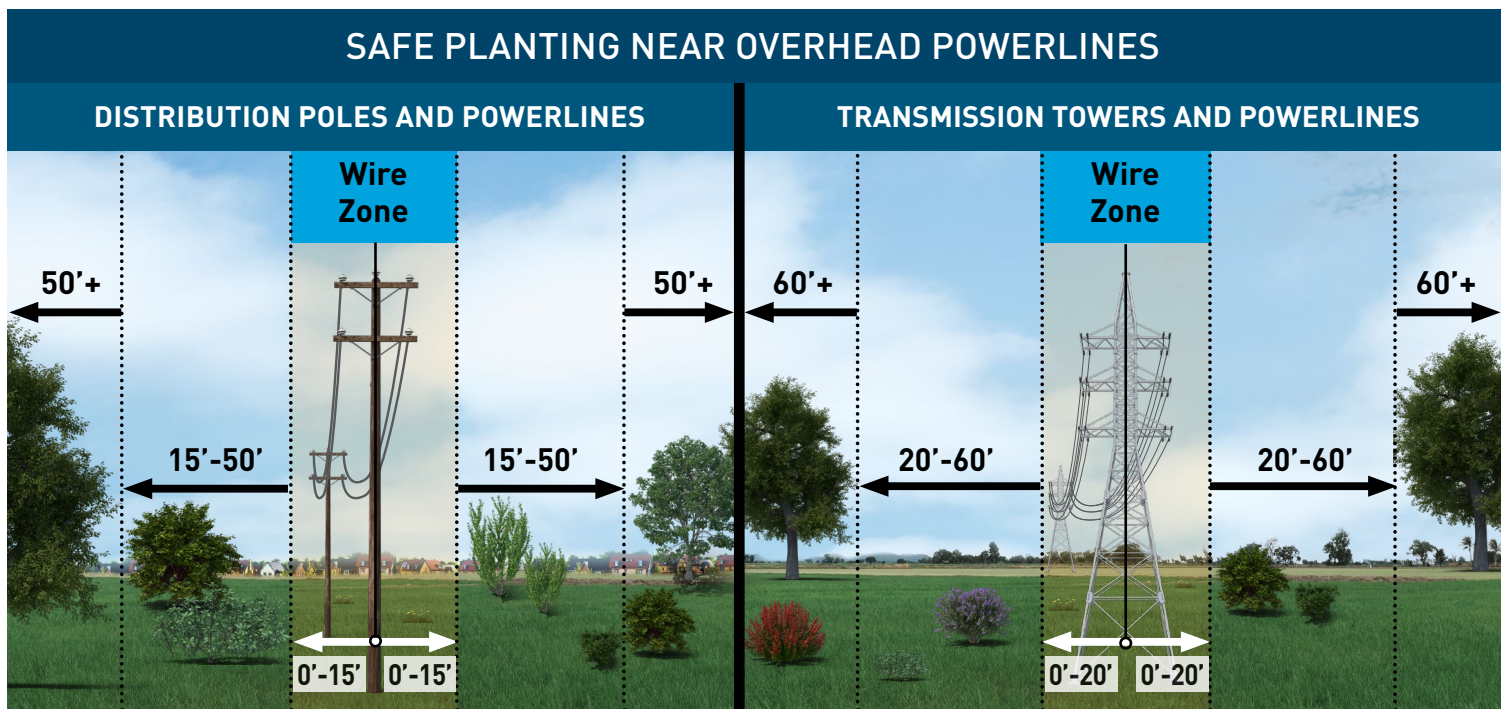
Help keep your community safe by planting the right tree in the right place.

When trees grow too close to powerlines, they can cause a power outage or ignite a wildfire. That's why trees near powerlines often need to be trimmed or removed.

Plan before you plant

Below are general guidelines for where you can safely plant near overhead powerlines. All trees that have the potential to fall onto a powerline may need to be removed.

Where and what you plant depends on where you live. High Fire-Threat Districts (HFTDs) are areas with increased wildfire risk. To see if you live in an HFTD, visit ia.cpuc.ca.gov/firemap.



For illustrative purposes only. Certain types of plants can be placed at different distances from PG&E equipment. For examples, please see the following page. Distribution equipment is commonly found in residential areas. Do not plant any trees or shrubs in the area where PG&E has the right to access land to maintain equipment. Visit pge.com/righttreerightplace for additional guidance.

Plans for new buildings and major landscaping projects must be reviewed by PG&E to avoid any interference with our equipment. Please submit your plans to PGEPlanReview@pge.com.







To learn more, visit pge.com/righttreerightplace or contact us at **1-877-295-4949** or wildfiresafety@pge.com.

Choose the right plant

Below are trees and plants that are safe near PG&E equipment and where to place them. Scan the QR code for more plant options and planting tips.




DISTRIBUTION POLES AND POWERLINES

	Plants and non-tree shrubs up to 1' tall		Plants and non-tree shrubs up to 10' tall	
Wire Zone Within 15' of wires		Mosquito Grass (<i>Bouteloua gracilis</i>)* Inside HFTD		Camellia (<i>Camellia j.</i> 'Variety') Outside HFTD
	Trees up to 15' tall			
Between 15'-50' of wires		Western Redbud (<i>Cercis occidentalis</i>)		'Paul's Scarlett' Hawthorne (<i>Crataegus l.</i> 'Paul's Scarlett')

Trees taller than 15' must be placed at least 50' out from distribution wires. What you can plant in the Distribution Wire Zone depends on if you live inside an HFTD.

TRANSMISSION TOWERS AND POWERLINES

	Low-growing grass up to 2' tall			
Wire Zone Within 20' of wires		Leafy Reedgrass (<i>Calamagrostis foliosa</i>)		Idaho Fescue (<i>Festuca idahoensis</i>)
	Non-tree shrubs up to 10' tall			
Between 20'-60' of wires		Crimson Spot Rockrose (<i>Cistus landanifer</i>)		Noell Grevillea (<i>Grevillea 'Noellii'</i>)

Trees taller than 10' must be placed at least 60' out from transmission wires.

This list includes recommended plant species for most California climate zones and is not all-inclusive. Consult your local nursery for more information. If there is a gas pipeline or underground powerline on or near your property, there may be additional safe planting guidelines.



Always call 811 at least two working days before digging or planting. A crew will mark any underground utilities for free.



For translation support in 240+ languages, or to request a communication in large print or Braille, call **1-800-743-5000**.

*Image courtesy of Pacific Nurseries.