



We can work together to keep our communities safe.

- ✓ Pick the right tree and the right location to keep safe distances from overhead and underground utilities
- ✓ Call 811 two days before digging or planting to have crews mark underground utilities
- ✓ Leave vegetation work near powerlines to a qualified line specialist

All trees and plants that pose a safety risk may need to be removed.



Pacific Gas and Electric Company
P.O. Box 997320
Sacramento, CA 95899

Plant Safely
Protect your community

Some of the measures included in this document are contemplated as additional precautionary measures intended to further reduce the risk of wildfires. "PG&E" refers to Pacific Gas and Electric Company, a subsidiary of PG&E Corporation. © 2024 Pacific Gas and Electric Company. All rights reserved. CCC-0322-4627. 07/30/2024.



Know where to plant to keep you and your community safe



Planting the right tree in the right place



Trees and plants need space to grow above and below ground

Planting the right tree in the right place can:

- ✓ Reduce power outages
- ✓ Prevent wildfires
- ✓ Maintain reliable service

Plan before you plant

1 Near powerlines

Where and what you plant depends on where you live. High Fire-Threat Districts (HFTDs) are areas with increased wildfire risk. To see if you live in an HFTD, visit ia.cpuc.ca.gov/firemap.

Distribution wires

Trees

- Do not plant any trees within the Wire Zone
- Plant trees that grow no taller than 15' at maturity at least 15' out from the wires
- Plant trees that will grow taller than 15' at least 50' out from the wires

Shrubs

- Plant shrubs that grow no taller than 10' at maturity within the Wire Zone if you live outside of an HFTD
- Inside an HFTD, small shrubs can be planted within the Wire Zone with a mature height up to 1' tall

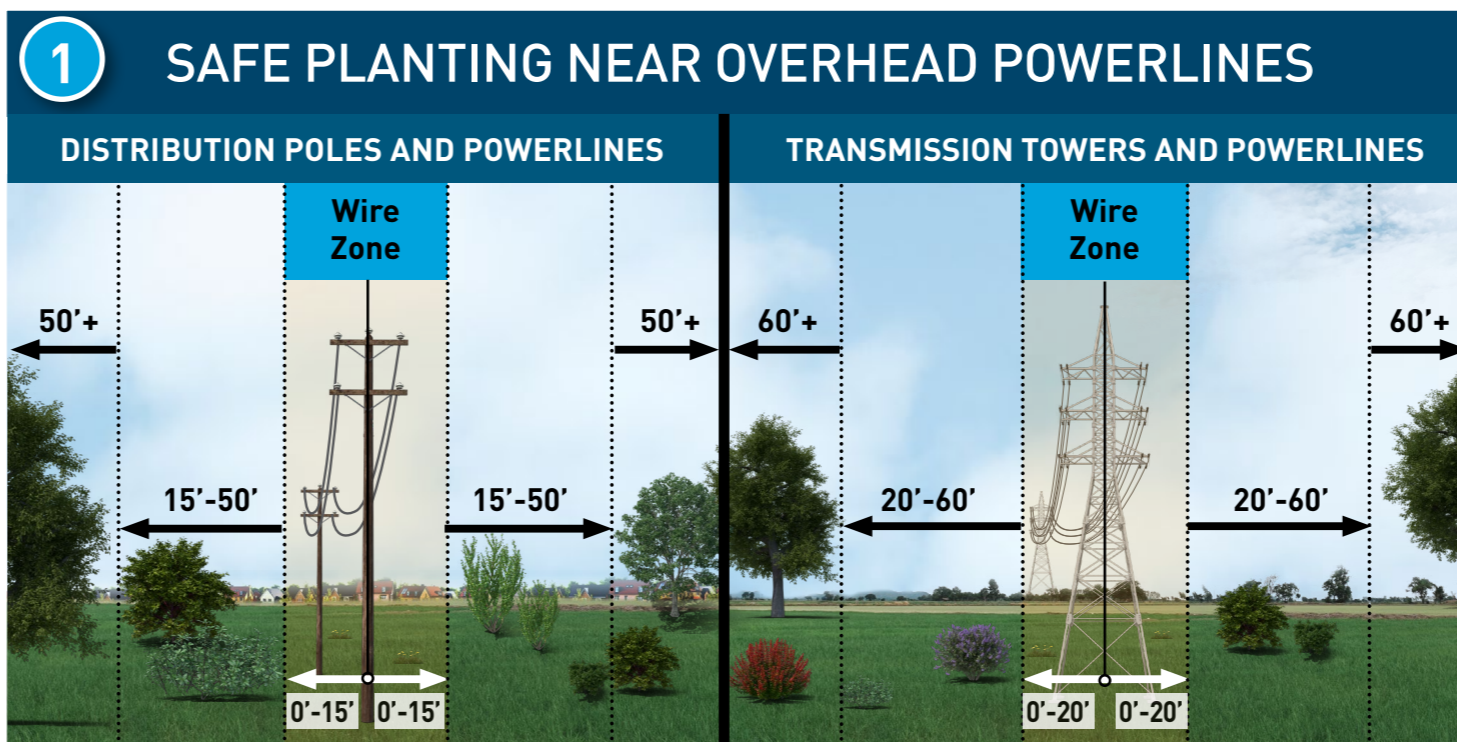
Transmission wires

- No trees or shrubs may be planted where PG&E has the right to access land to maintain equipment
- Within this area, plant only low-growing grass up to 2' tall at maturity

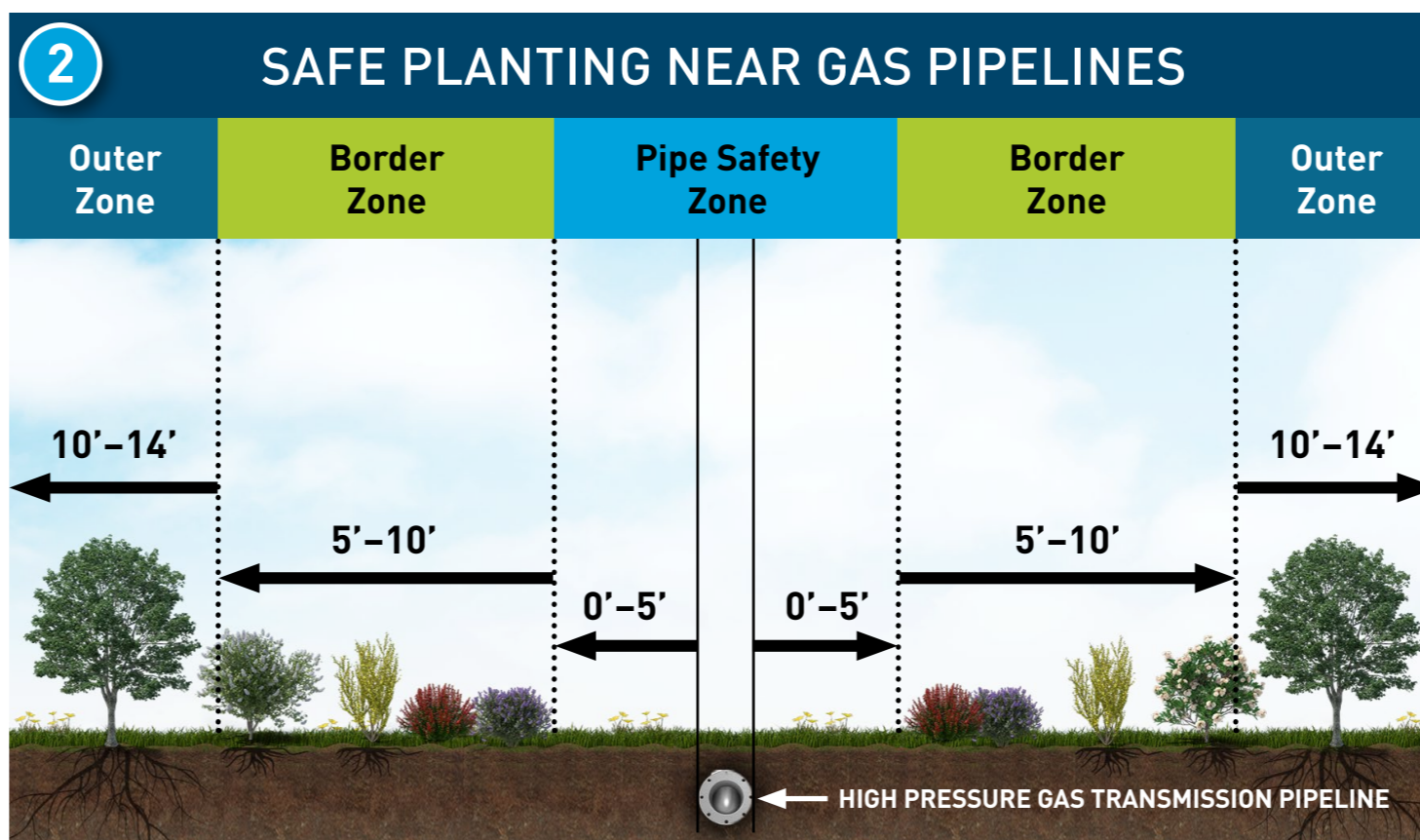
For both distribution and transmission powerlines, do not plant any vegetation within 10' of any pole or structure, or 5' of a guy wire.

2 Near pipelines

- Plant large trees at least 14' from the edge of the pipeline
- Choose low-growing lawns and flower beds for the area above the pipeline
- To see if you live near a gas transmission pipeline, visit pge.com/pipelinelocations



Distribution equipment is commonly found in residential areas. What you can plant in the Distribution Wire Zone depends on if you live inside an HFTD. If there is underground equipment on or near your property, there may be additional safe planting guidelines. Visit pge.com/righttreerightplace for additional guidance.



For illustrative purposes only. Multiple factors are reviewed when considering removal of vegetation near gas pipelines including trunk size and soil condition, among others.



Choose the right plant

Learn more about trees and plants that are safe to place near PG&E equipment.

Scan the QR code for plant suggestions

SCAN HERE



Thank you for helping to keep your community safe.

If you have questions:

- Visit pge.com/righttreerightplace
- Call 1-877-295-4949
- Email wildfiresafety@pge.com



Always call 811 at least two working days before digging or planting. A crew will mark any underground utilities for free.



For translation support in 240+ languages, or to request a communication in large print or Braille, call 1-800-743-5000.