



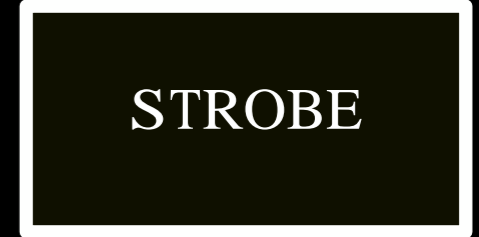
LAURA MVULA

LIVE PERFORMANCE _ ART DIRECTION
QUICK _ LOOK _ LIGHTING

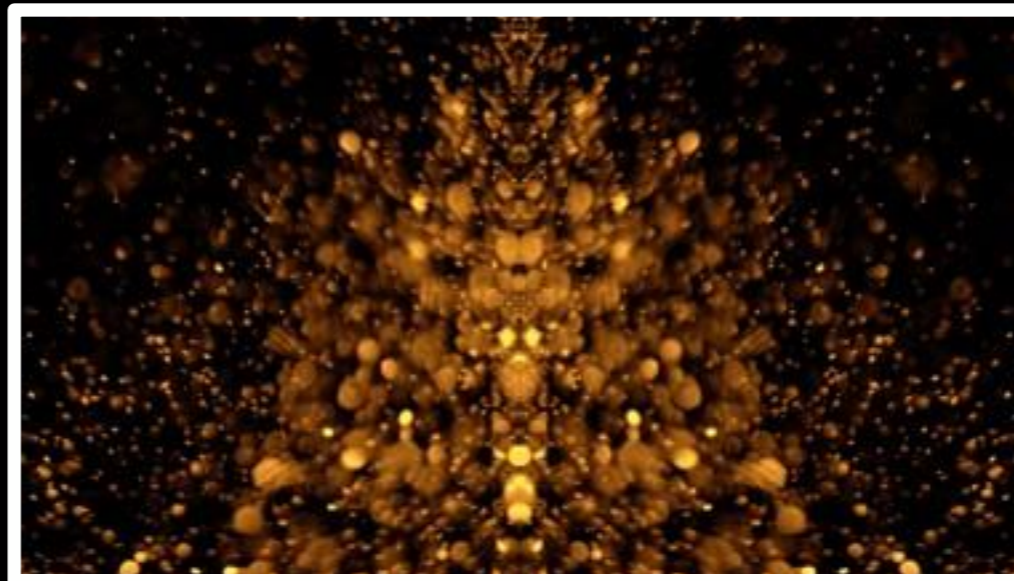
1) WHO I AM



WHITE
or CTB



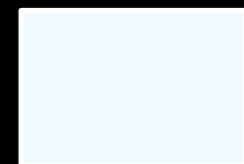
WHO I AM - Set as A THEMATIC INTRO TO THE LIVE SHOW. STARTING IN COMPLETE BLACK-OUT THEN BUILDING TO A CLIMATIC 'WHITE-OUT' - good Use of FORWRD FACING FIXTURES. - THIS BUILDS TO A SHARP STOP. // EST- 2 MINS - (ATOMSPHERIC ERUPTION.)



CONGO



TUNGSTEN
(Gold)

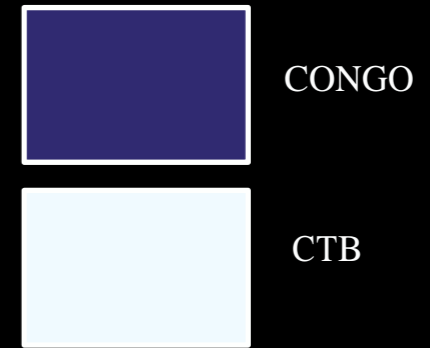
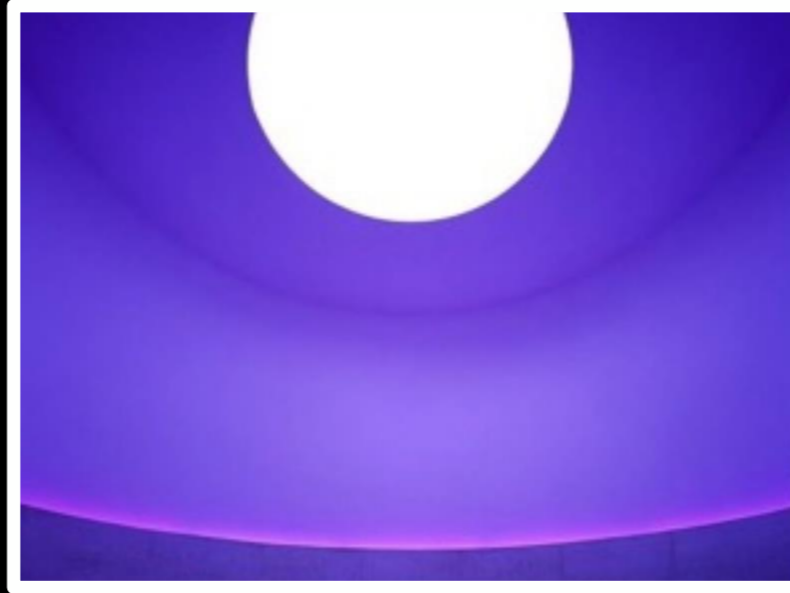


CTB
Spots

OVERCOME - SHORT A *cappella* INTRO WITH KEY LIGHT ON LAURA. - AMBER PROFIL WASH THROUGHOUT. LISTEN OUT FOR MUSICAL PAUSES AFTER EACH CHOURS - FOLL DRUM FOR BEAT ACCENT - SAVE EXTRA 'WOW FACTOR' FOR LAST DOUBLE CHOURS AFTER MID 8. // EST- 3.20 MINS - (JOYFUL CELEBRATION OF TRIUMPH)

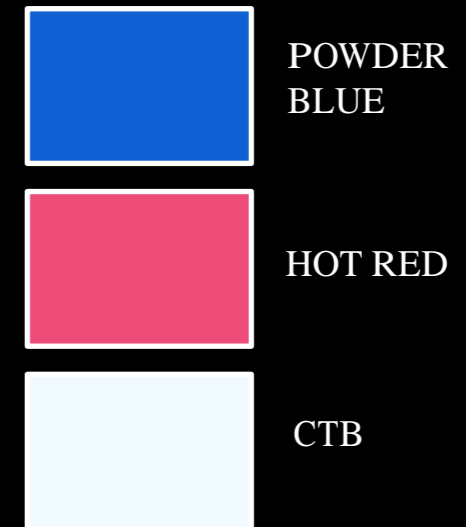
GO
ASS

3) SING TO THE MOON



SING TO THE MOON - THIS MAY OR MAY NOT HAVE A LAURA SOLO INTRO TO SET THE TONE - WHITE BEAMS WITH VERY SLOW ROTATION THROUGHOUT CONGO WASH - SYMMETRICAL HYPNOTIC POSITION PALETTES — // EST- 4:20 MINS - (GRACEFUL RISE & FALL, Eb & FLOW)

4) LET ME FALL



LET ME FALL - UPBEAT FOUR ON THE FLOOR - TWINKLE CHACES FOLLOW REPEATING KEYS MOTIF // EST- 3:40 MINS (SYNCOPATED NEW WAVE DISCO - WITH EPIC MIRROR BALL CHORUSES)

5) KISS MY FEET



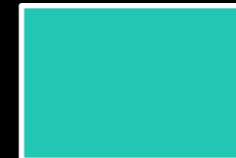
RED



CTO

KISS MY FEET - INTIMATE INTRO & VERSES - NOTE ACCENTS ON DRUMS HITS - BUILDING INTO LARGE GRAND CHORUSES // EST- 3:40 MINS - (GROWING FROM EMBERS TO FLAME)

6) FLYING WITHOUT YOU



CYAN



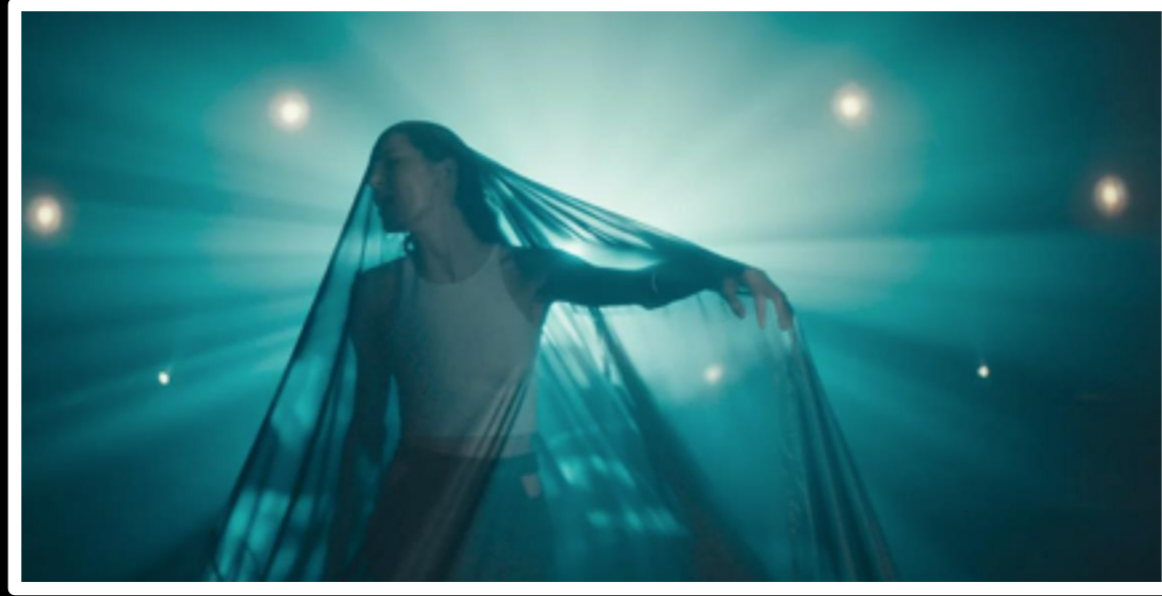
HOT RED



CTB

FLYING WITHOUT YOU - GRACEFUL BUILDING THROUGHOUT - NOTE SWEEPING STRINGS, // EST- 3:50 MINS

7) BREAD



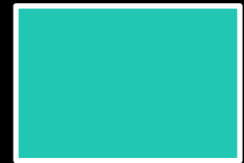
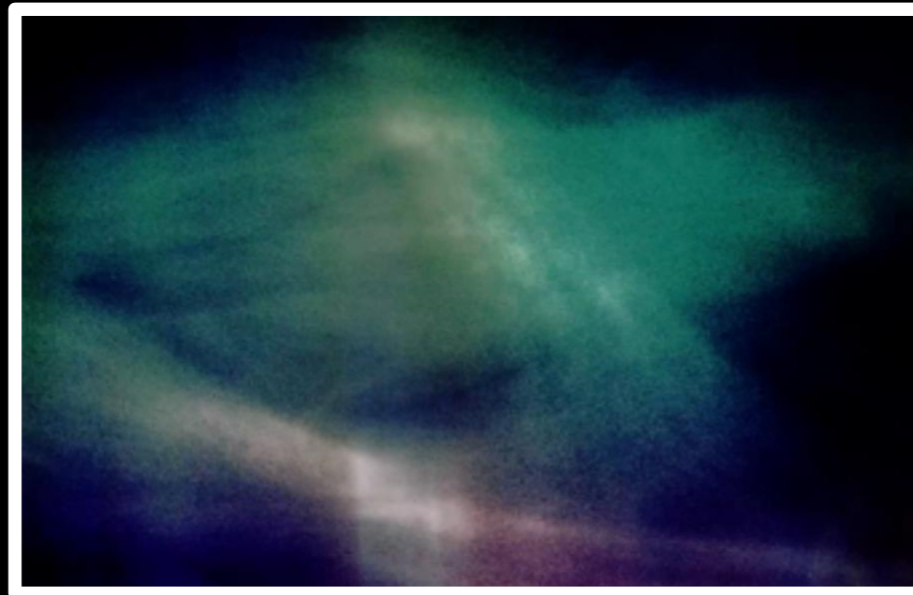
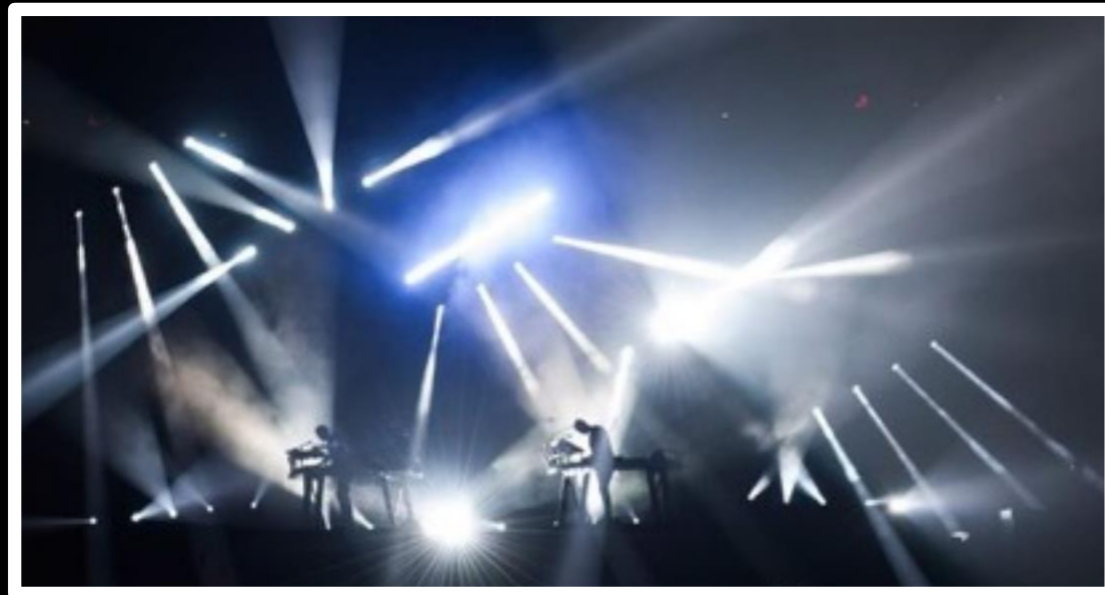
HOT RED



CTB

BREAD - SEARCH LIGHT THEMED THROUGHOUT - EXTREMELY SLOW MOVING BEAMS - MINIMAL AT FIRST AS DYNAMIC RISES ADDING MORE BEAMS // EST- 3:20 MINS - (SEARCHING)

8) LUCKY MAN



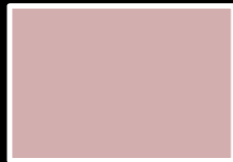
CYAN



CTB

LUCKY MAN - ETHERIAL ATMOSPHERIC - LISTENING OUT FOR EERIE GUITAR STABBS AND PERCUSSION HITS, GOOD USE OF ABSTRACT POSITION PALETTES // EST- 3:00 MINS

9) SHOW ME LOVE



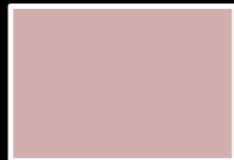
SOFT
PINK



CONGO

SHOW ME LOVE - INTIMATE LIGHTING FOCUSING ON LAURA WHILE LOW WASH KEY ON BAND - ALL FIXTURES FACED TOWARDS LAURA - UNTIL CRESCENDO AT 4minS BUILDS BEAMS OUT TO THE AUDIENCE
// EST- 6:00 MINS

10) ANGEL



SOFT
PINK



TUNGSTEN

ANGEL - AN ALMOST BEATLES' LIKE CELEBRATION OF ECLECTIC SOUNDS, CREATING A PROGRESSIVE JOURNEY _ NOTE ACCENT ON ELECTRIC SITAR - PLAYFUL TUNGSTEN TWINKLE CHANCING FOLLOWING CAREFULLY SONG DYNAMICS // EST- 3:40 MINS

11) SHE



AMBER



CTo

SHE - ANOTHER VERY INTIMATE TRACK WITH WARM TONES AND FOCUS ON LIAURA HERSELF - NOTES THE PASSING OF MELODY TO THE BACKING SINGING - GOLD KEY LIGHT FOR SOLOISTS AND AMBER SIDE LIGHT // EST-4:00 MINS (SUNRISE)

12) FATHER, FATHER



FATHER, FATHER - A SOLO PIECE PERFORMED BY LAURA HERSELF - GOOD FRONT LIGHT WITH THE REST OF STAGE IN DARKNESS - BACKLIGHT BEAMS - STILL or VERY SLOW ROTATIONS ONLY // EST- 6:10 MINS

13) IS THERE ANYBODY OUT THERE?



TEAL



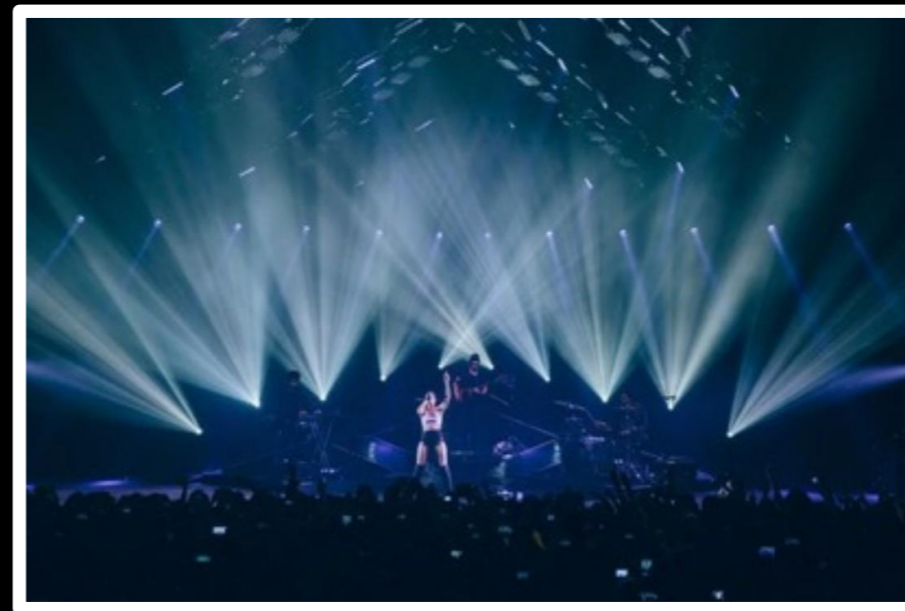
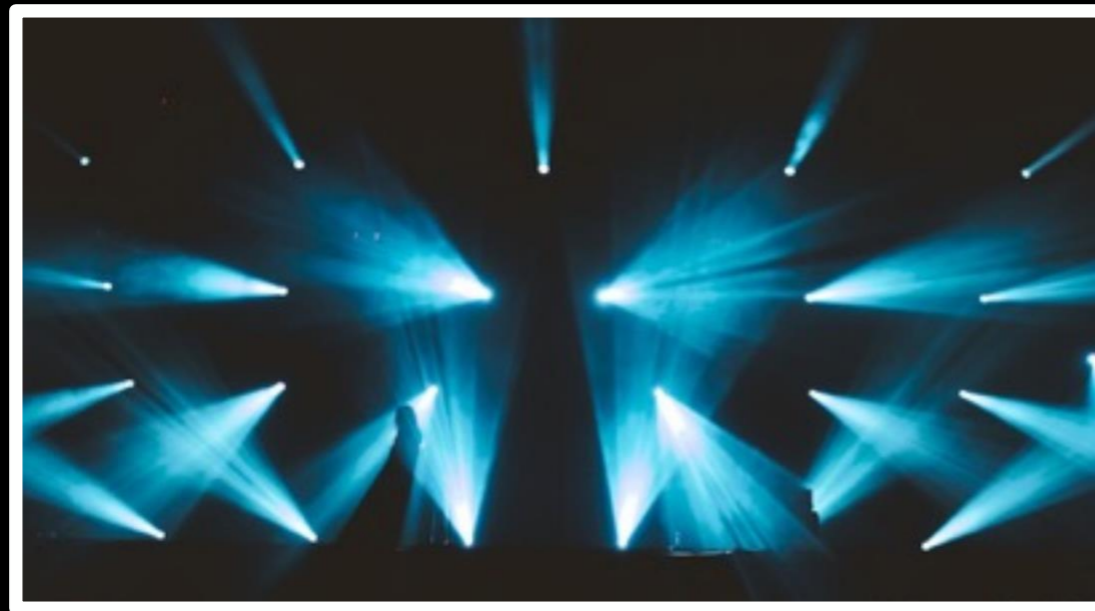
CONGO



CTB

IS THERE ANYBODY OUT THERE - KEY NOTES ARE THE PASSING OF MELODY BETWEEN LAURA AND THE BACKING SINGERS - GOOD USE OF KEY-LIGHT ON HARP AND BV'S - SOFT TEAL AND CONGO WASH WITH FINE WHITE BEAMS // EST-5:20 MINS

14) MAKE ME LOVELY



STEEL
BLUE



CTB

MAKE ME LOVELY - TWINKLING BEAMS - FINE GOBOS AND GRAND DYNAMIC PUSHES - GOOD USE OF SLOW POSITION pALETTE TRANSITIONS // EST-6:00 MINS

15)DIAMONDS



CONGO



CTB

DIAMONDS - GRACEFUL INTIMATE WITH GOOD FOCUS ON LAURA // EST-3:30 MINS

16)PEOPLE



CT0



TUNGSTEN

PEOPLE - CLASSIC USE OF MOLE PHASE TUNGSTEN LIGHT FIXTURES AND AUDIENCE LIGHTING ADDING BEAMS FOR CHOURS // EST-3:50 MINS





ART DIRECTION - WWW.FABRICOFHUMANITY.CO.UK