

Sentinel Provider Network Influenza-Like Illness (ILI) Surveillance Summary for the Week of July 17, 2022 - July 23, 2022 (Week 29)

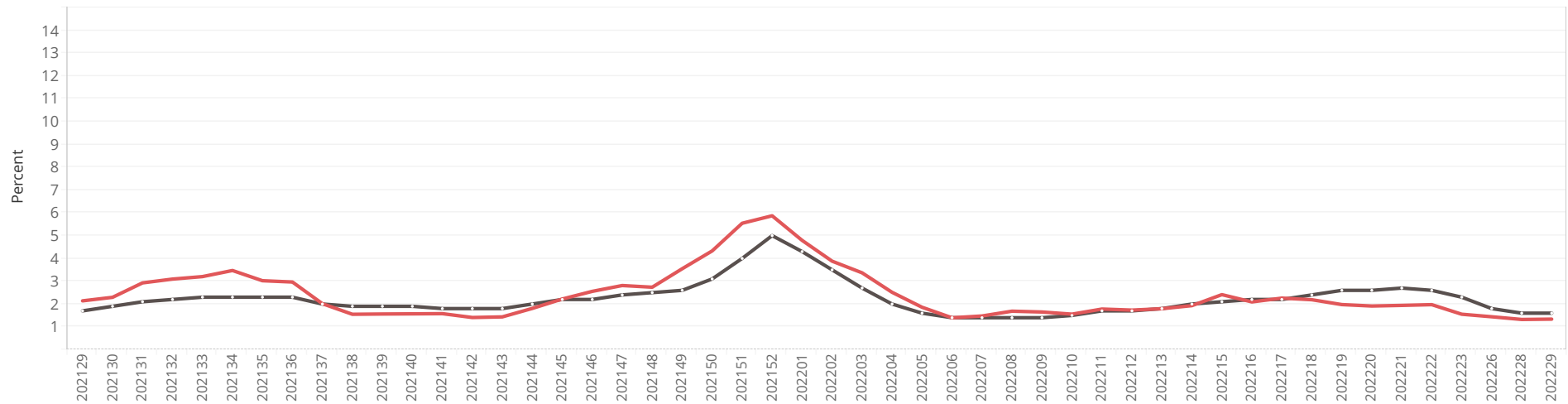
What is the Influenza-Like Illness Activity in Tennessee?

Health Region	Sentinel Sites Reporting	Number of Patients Seen With ILI	Number of Patients Seen	% ILI
CHR	3	35	1,692	2.1
ETR	9	34	2,609	1.3
JMR	2	42	2,601	1.6
KKR	2	11	2,435	0.5
MCR	22	65	6,893	0.9
MSR	9	184	7,936	2.3
NDR	8	47	6,404	0.7
NER	5	10	792	1.3
SCR	3	0	100	0.0
SER	6	34	1,367	2.5
SUL	3	10	1,664	0.6
UCR	14	0	548	0.0
WTR	11	1	309	0.3
TN	97	473	35,350	1.3

Influenza-Like Illness Activity Fast Facts:

- The percentage of outpatients with ILI visiting the state's sentinel clinic sites was **1.3%**. The CDC baseline is 3.1%.
- There have been **0** pediatric influenza-related deaths this season.
- **0** pregnant women have died from influenza-related illness this season.

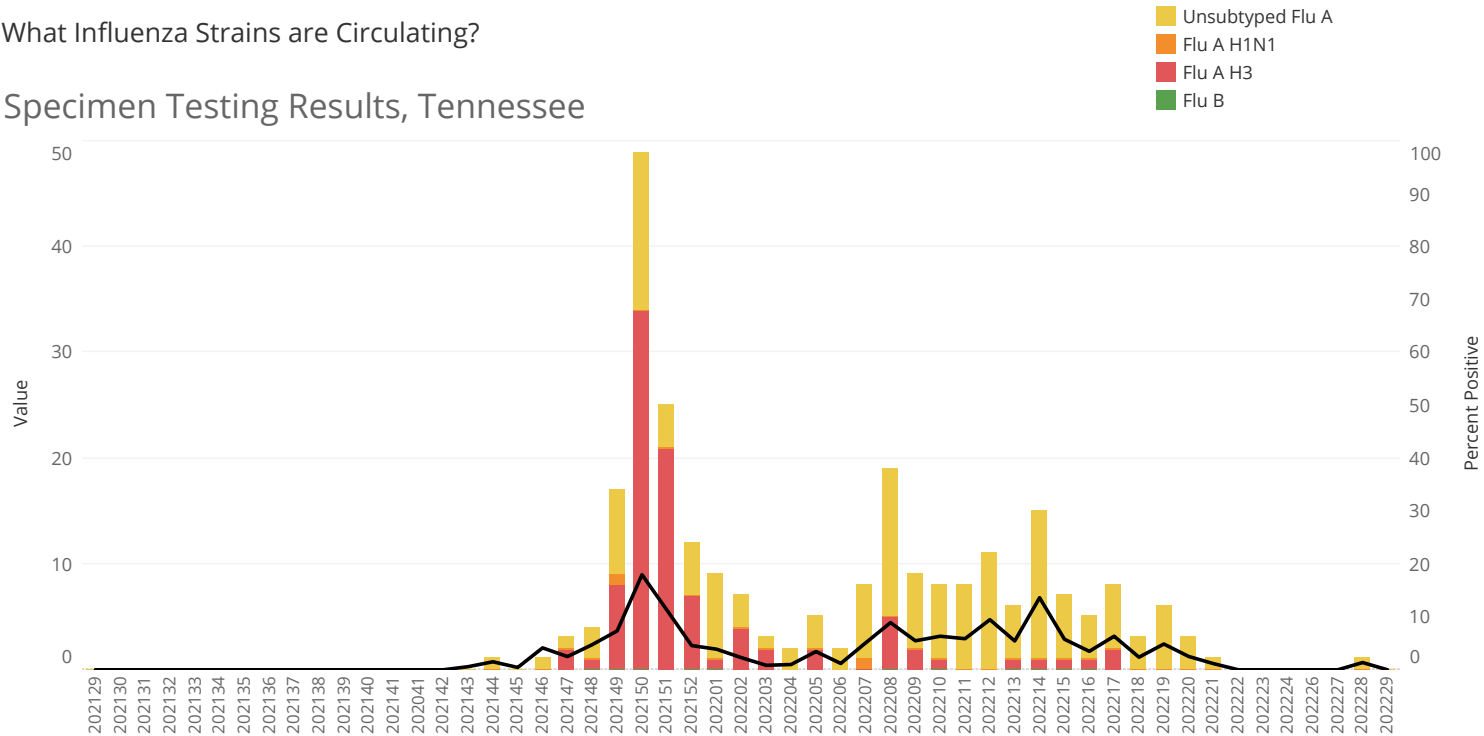
Percentage of Outpatient Visits Reported as Influenza-Like Illness by the **U.S.** and **Tennessee** ILINet, 2021 to 2022



Sentinel Provider Network Influenza-Like Illness (ILI) Surveillance Summary for the Week of July 17, 2022 - July 23, 2022 (Week 29)

What Influenza Strains are Circulating?

Specimen Testing Results, Tennessee



Influenza Circulation in Tennessee Fast Facts:

- To date, **69** specimens from **Week 29** have been tested by TDH Laboratory Services and two commercial laboratories that serve clinics across the state.
- 1** were positive for influenza virus.
- The most common strain of specimens tested was **N/A**.
- 2** of Tennessee's 95 counties have had one or more influenza-positive result in the past 6 weeks.

What Respiratory Pathogens are Circulating?

Week	Tested	Unsubtyped Flu A	Flu A H1N1	Flu A H3	Flu B	COVID 19	RSV A	RSV B	Paraflu 1	Paraflu 2	Paraflu 3	Paraflu 4	Rhino	HMV	Adeno	Corona Oc43	Corona NI63	Corona 229E	Corona Hku1
202229	69	0	0	0	0	0	1	0	0	0	1	0	1	0	0	0	0	0	0
202228	76	1	0	0	0	0	0	0	0	0	0	0	0	0	0	0	0	0	0
202227	60	0	0	0	0	0	1	1	0	0	0	0	1	0	0	0	0	0	0
202226	81	0	0	0	0	0	1	0	0	0	0	0	1	0	0	0	0	0	0
202225	66	0	0	0	0	0	0	0	0	0	1	0	2	0	0	0	0	0	0
202224	84	1	0	0	0	0	0	0	0	0	0	0	2	0	0	0	0	0	0

Reference Information for Sentinel Provider Network

1. Influenza-like illness (ILI) is defined as fever > 100° F (37.8° C) plus cough and/or sore throat. Classification of ILI is based upon symptoms only and does not require testing. As of 10/3/2021, CDC removed "in the absence of a known cause (other than influenza)" from the case definition.

Important Information for Sentinel Providers

Sentinel Providers report ILI by the end of Tuesday following the end of the reporting week (<https://wwwn.cdc.gov/ilinet/>) and collect and ship specimens from ILI cases Monday through Thursday (maximum 10/week per provider). All Sentinel Provider specimens MUST be accompanied by the Order Manifest or Influenza and Respiratory Viral Panel Submission form or testing will not be done. The Respiratory Viral Panel is only validated for nasopharyngeal (NP) specimens. Specimens collected from other sites cannot be tested. Additional laboratory supplies may be obtained by completing the lab order supply form. To ensure the order is filled, please include the CDC Provider ID Code.

Contact Information

Submit weekly reports to: <https://wwwn.cdc.gov/ilinet/> OR Fax 888-232-1322
 State Lab: Molecular Section 615-262-6300
 SPN Questions:
 State: Allison Sierocki 800-404-3006 OR 615-741-7247 OR vpd.imm@tn.gov
 County/Region: Regional SPN Coordinator (see map)

Tennessee Sentinel Provider Network Coordinators

