

## Sentinel Provider Influenza-Like Illness (ILI) Surveillance Summary For the Week of August 1-7, 2010 (Week 31)

Summary for	# Providers reporting	Total Providers	Total Regional ILI	Total Regional Patients	% ILI	Comparison to State*
Chattanooga-Hamilton County	3	5	0	364	0.0%	
East Tennessee Region	3	7	0	436	0.0%	
Jackson-Madison County	1	1	2	736	0.3%	higher
Knoxville-Knox County	2	4	0	401	0.0%	
Mid-Cumberland Region	5	11	1	465	0.2%	
Memphis-Shelby County	2	6	0	693	0.0%	
Nashville-Davidson County	3	6	0	808	0.0%	
Northeast Region	2	3	0	376	0.0%	
South Central Region	3	3	0	294	0.0%	
Southeast Region	2	4	0	31	0.0%	
Sullivan County	1	2	0	226	0.0%	
Upper Cumberland Region	3	5	0	444	0.0%	
West Tennessee Region	6	6	0	543	0.0%	
State of Tennessee	36	63	3	5817	0.05%	

\*\*\*\*\*

### **Reminder:**

**The Sentinel Provider Network is a year-round surveillance system. Please report weekly and submit specimens for all patients that meet the case definition.**

\*\*\*\*\*

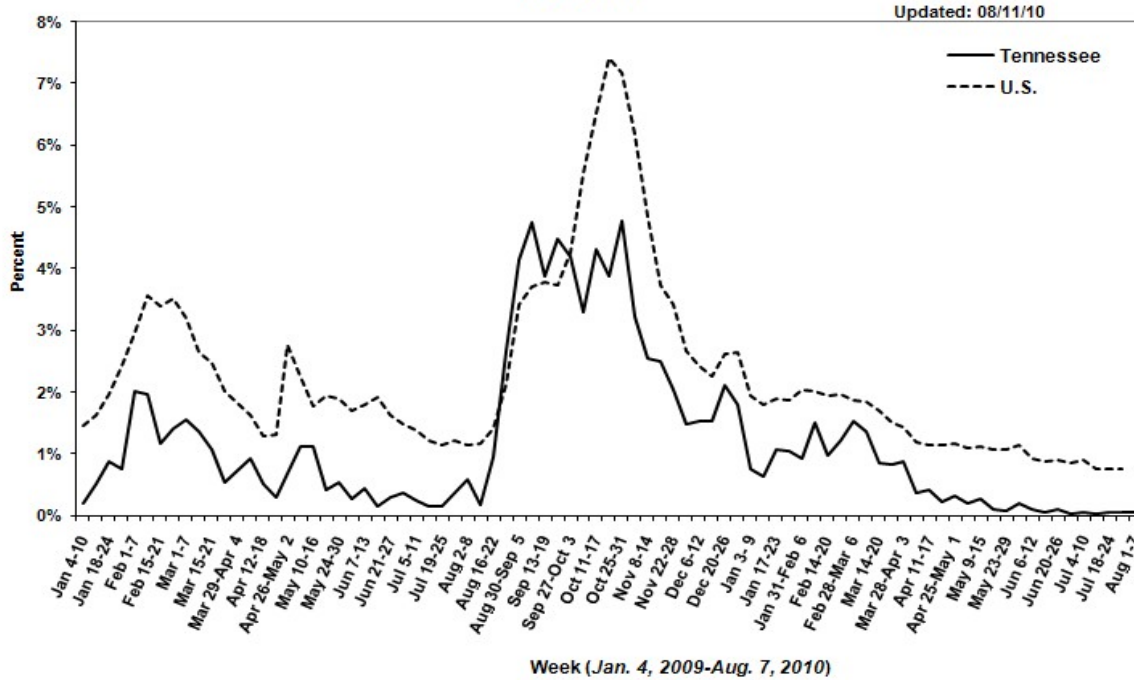
**The percentage of patients with ILI reported by the TN SPN in Week 31 was 0.05% as compared to 0.06% in Week 30. None of the three specimens received during Week 31 were positive for influenza viruses. No Tennessee counties have had a positive PCR result in the past 17 weeks.**

ILI is defined as fever > 100°F (37.8°C) plus cough and/or sore throat, in the absence of a known cause (other than influenza). Classification of ILI is based upon symptoms only and does not require any test. The SPN Protocol (eff. Sept 1, 2009): SPs report ILI by the end of Tuesday following the end of the reporting week; collect and ship specimens from ILI cases on Mondays, Tuesdays and Wednesdays (maximum 10/wk) using the SPN Specimen Collection Form dated 8/21/09. Complete the lab supply order form to receive new specimen collection supplies.

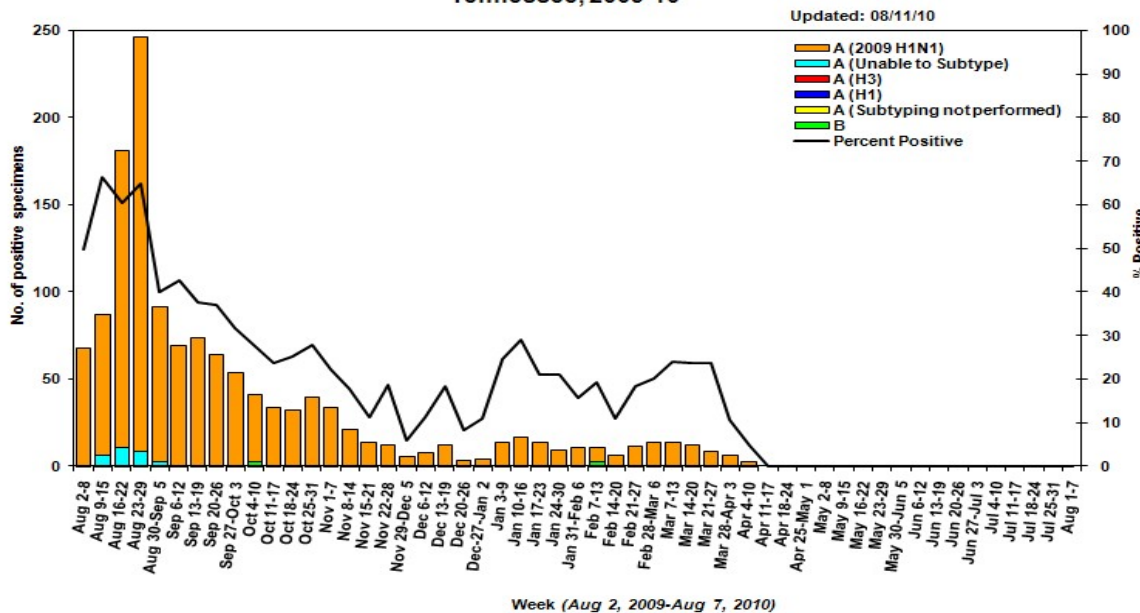
The CDC reports that the percentage of patients visiting outpatient healthcare providers in the Sentinel Provider Network (SPN) with influenza-like-illness (ILI) when influenza viruses are not circulating is expected to fall at or below a specific SPN baseline [nationwide = 2.2%, East South Central region (AL, TN, MS, KY) = 2.4%]. When the percentage of patients with ILI exceeds this baseline, this suggests that influenza viruses may be circulating.

\*The percentage of influenza-like-illness patients seen in each region is compared to the statewide average. Regions with percentages statistically significantly different from the state average are noted as "higher" or "lower."

**Percentage of Outpatient Visits Reported by the U.S. and Tennessee Outpatient Influenza-like Illness Surveillance Network (ILINet) as Influenza-like Illness, 2009-2010**



**Influenza Positive Tests Submitted to TN Dept. of Health Laboratory Services, Tennessee, 2009-10**



**State Public Health Laboratory**

**Influenza PCR - specimens from all sources**

Month 2009	Report Week	# Recd	Pan H1N1	A (H1)	A (H3)	B
Jun.	23	5	0	0	0	0
	24	6	0	0	0	0
	25	3	0	0	0	0
Jul.	26	3	0	0	0	0
	27	2	0	0	0	0
	28	5	0	0	0	0
	29	5	0	0	0	0
Aug.	30	3	0	0	0	0
	31	3	0	0	0	0

Laboratory testing is done specifically for Seasonal A (H1) A(H3) & B virus subtypes, in addition to Pandemic A (H1). Non-subtyped and non-subtypable results are not reported in this chart or on the state map.

All Sentinel Provider specimens **MUST** be accompanied by the SPN Influenza Submission form dated 8/21/2009, or testing will not be done.

This table shows all specimens tested by the State Lab. The state lab policy for influenza testing is at <http://health.state.tn.us/H1N1.htm#hcp>.

**Important Information**

[www.cdc.gov](http://www.cdc.gov) AND <http://health.state.tn.us/H1N1.htm>

**Submit weekly reports to:**  
<http://www2a.cdc.gov/ilinet/> or Fax 888-232-1322

**State Lab:**

• Susan McCool 615-262-6351

**SPN Questions:**

• Regional SPN Coordinator (see map)  
 • Robb Garman or Robert Taylor 800-404-3006 or 615-741-7247

# TENNESSEE SENTINEL PROVIDER NETWORK

