

Sentinel Provider Influenza-Like Illness (ILI)¹ Surveillance Summary health.state.tn.us/TNflu_report_archive.htm

For the Week of Sept. 30-Oct. 6, 2012 (Week 40)

| Summary for | # Sites reporting | Total Sites | Total Regional ILI | Total Regional Patients | % ILI | Compared to State ² |
|-------------------------------|----------------------|----------------|--------------------------|-------------------------------|-------|-----------------------------------|
| Hamilton County (Chattanooga) | 4 | 4 | 1 | 772 | 0.1% | |
| East Tennessee Region | 7 | 9 | 12 | 3138 | 0.4% | |
| Jackson-Madison County | 0 | 1 | 0 | 0 | 0.0% | |
| Knoxville-Knox County | 4 | 4 | 10 | 1747 | 0.6% | |
| Mid-Cumberland Region | 8 | 10 | 5 | 944 | 0.5% | |
| Shelby County (Memphis) | 2 | 10 | 3 | 237 | 1.3% | higher |
| Nashville-Davidson County | 5 | 6 | 7 | 1358 | 0.5% | |
| Northeast Region | 2 | 3 | 1 | 221 | 0.5% | |
| South Central Region | 3 | 3 | 0 | 274 | 0.0% | |
| Southeast Region | 3 | 4 | 0 | 407 | 0.0% | |
| Sullivan County (Tri-Cities) | 1 | 2 | 0 | 328 | 0.0% | |
| Upper Cumberland Region | 4 | 5 | 0 | 633 | 0.0% | |
| West Tennessee Region | 4 | 6 | 2 | 257 | 0.8% | |
| State of Tennessee | 47 | 67 | 41 | 10316 | 0.40% | |

Note to Sentinel Providers:

Sentinel Providers are reminded to submit specimens on all patients meeting the ILI case definition (up to 10 per week).

Please use the new TDH specimen submission form.

The percentage of patients with ILI reported in Week 40 was 0.40%, compared with 0.34% in Week 39. To date, fifteen specimens from Week 40 have been tested; all negative for influenza viruses and two were positive for other respiratory viruses. No cases of novel influenza A/H3N2v have been detected in Tennessee to date. CDC reports 306 confirmed cases in 10 states, 16 hospitalizations and one death; no new cases have been diagnosed since September 7. Surveillance continues: a clinician with a patient with ILI and recent swine contact should collect an appropriate nasopharyngeal specimen for viral testing and contact public health.

State Public Health Laboratory
Respiratory Viral Panel

Number of Positive Specimens, by week

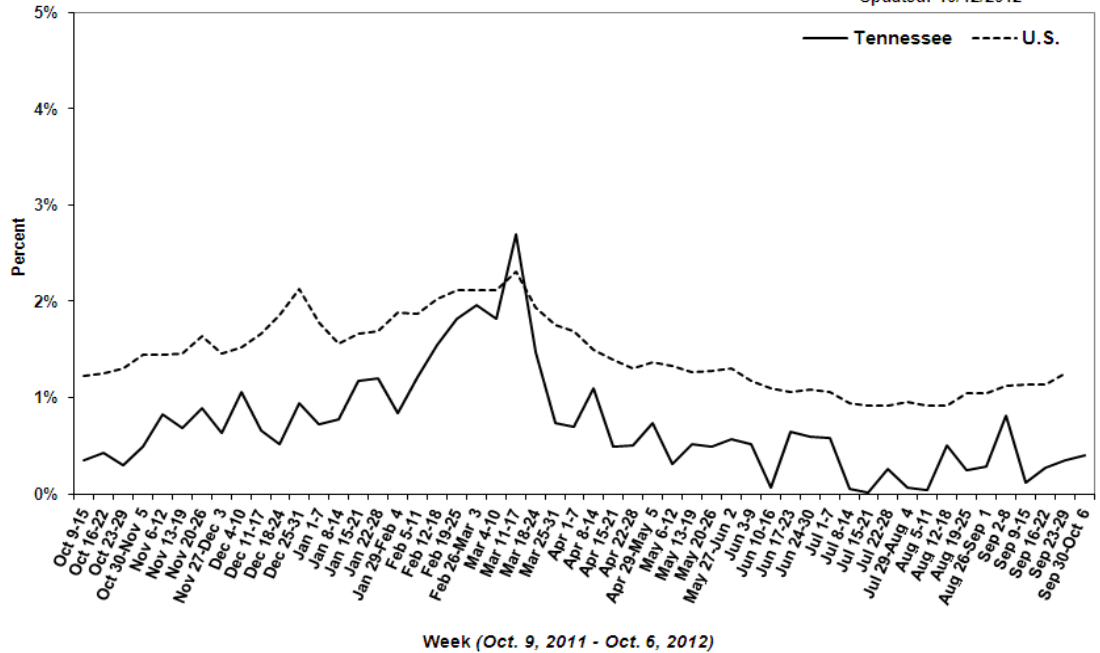
| Month/Week | # | Flu A (H3) | Flu A(H1N1) | Flu B | Paraflu 2 | Rhino |
|------------------|----|---------------|----------------|-------|-----------|-------|
| October | | | | | | |
| Current | 15 | 0 | 0 | 0 | 1 | 1 |
| September | | | | | | |
| 39 | 28 | 2 | 0 | 1 | 0 | 2 |
| 38 | 24 | 0 | 0 | 0 | 0 | 1 |
| 37 | 14 | 0 | 0 | 0 | 0 | 1 |
| 36 | 18 | 0 | 0 | 0 | 0 | 0 |

Correction:

The surveillance report for Week 38 (Sep. 22-29, 2012), three specimens were classified as influenza positive, but were later confirmed as negative. The corrected Week 38 results are in this week's report and corrected copies of Weeks 38 and 39 reports will be posted at health.state.tn.us/TNflu_report_archive.htm.

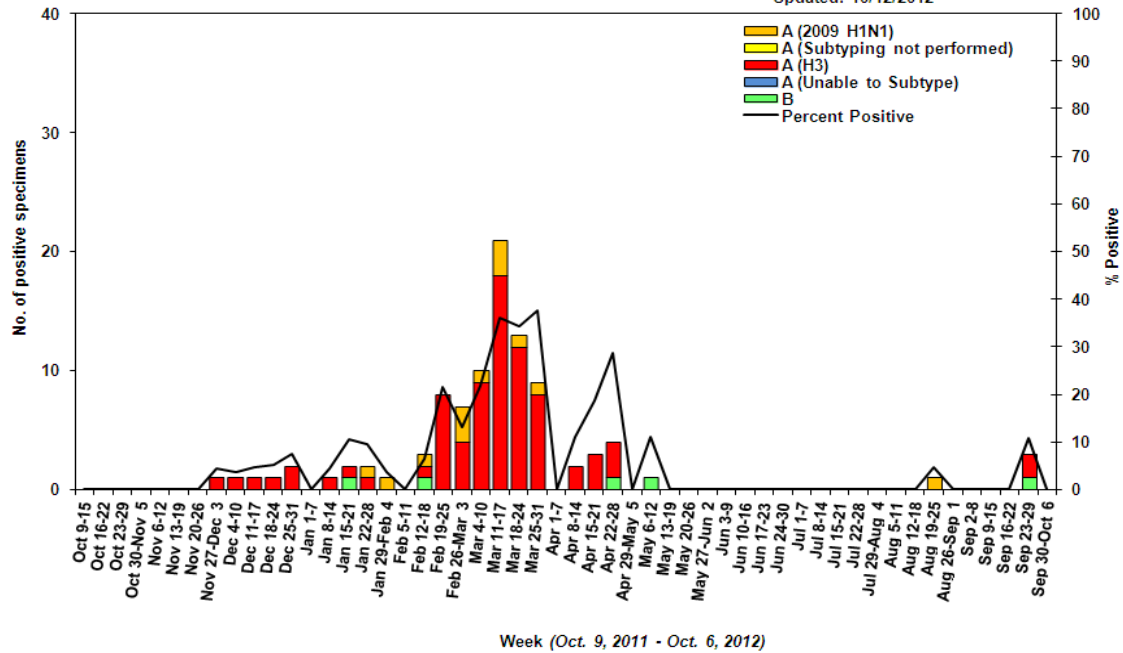
Percentage of Outpatient Visits Reported by the U.S. and Tennessee Outpatient Influenza-like Illness Surveillance Network (ILINet) as Influenza-like Illness, 2011-2012

Updated: 10/12/2012



Influenza Positive Tests Submitted to TN Dept. of Health Laboratory Services, Tennessee, 2011-2012

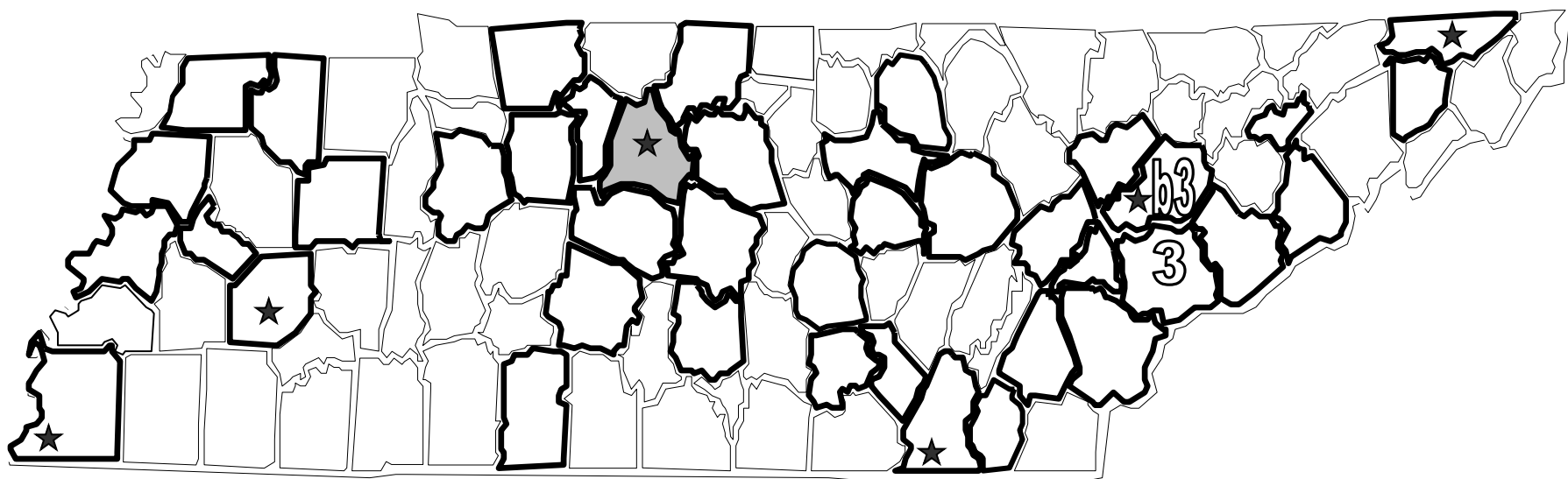
Updated: 10/12/2012




Influenza confirmed by culture or PCR in Tennessee from specimens collected by any source within the past 6 weeks.

August 26, 2012 to October 6, 2012

- Strains are reported by county of case residence or, if unknown, county where the specimen was collected.
- Counties where influenza sentinel providers are located are identified with bold boundary lines.
- Stars mark counties with large metropolitan populations (Memphis, Jackson, Nashville, Chattanooga, Knoxville, and the Tri-Cities area)



 2009 A (H1N1)

 3 A(H3)

 Seasonal B

Reference Information for Sentinel Provider Network

1 Influenza-like illness (ILI) is defined as fever > 100°F (37.8°C) plus cough and/or sore throat, in the absence of a known cause (other than influenza). Classification of ILI is based upon symptoms only and does not require any test.

2 The % of patients with ILI seen in each region is compared to the statewide average. Regions with % statistically-significantly different from the state average are noted as "higher" or "lower." The CDC reports that the percentage of patients visiting outpatient healthcare providers in the Sentinel Provider Network (SPN) with influenza-like-illness (ILI) when influenza viruses are not circulating is expected to fall at or below a specific SPN baseline [nationwide = 2.2%, East South Central region (AL, TN, MS, KY) = 2.3%]. When the percentage of patients with ILI exceeds this baseline, this suggests that influenza viruses may be circulating.

Important information for Sentinel Providers

Sentinel Providers report ILI by the end of Tuesday following the end of the reporting week (www2a.cdc.gov/ilinet) and collect and ship specimens from ILI cases Monday through Thursday (maximum 10/week per provider). All Sentinel Provider specimens MUST be accompanied by the Influenza and Respiratory Viral Panel Submission form or testing will not be done. The Respiratory Viral Panel is only validated for nasopharyngeal (NP) specimens. Specimens collected from other sites cannot be tested.

Additional laboratory supplies can be obtained by completing the lab order supply form. To ensure the order is filled, please include the CDC Provider ID Code.

Contact Information

Submit weekly reports to: <http://www2a.cdc.gov/ilinet/> OR Fax 888-232-1322

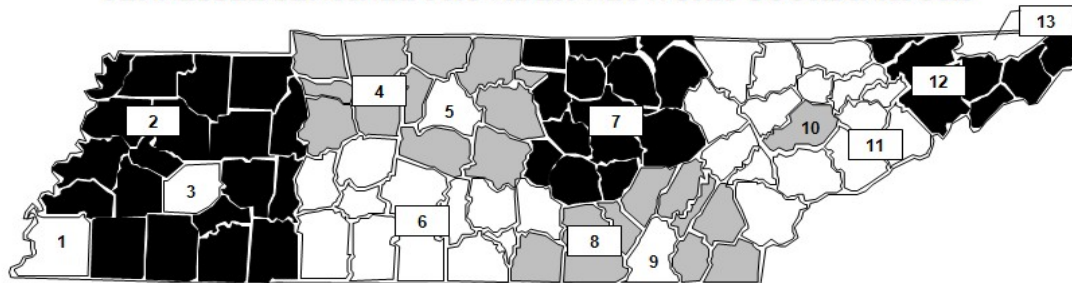
State Lab: Susan McCool 615-262-6351

SPN Questions:

State: Robb Garman 800-404-3006 OR 615-741-7247

County/Region: Regional SPN Coordinator (see map)

TENNESSEE SENTINEL PROVIDER NETWORK COORDINATORS



| | | |
|----|-----------------------------|--------------|
| 1 | Shelby County | 901-222-9239 |
| 2 | West TN Region | 731-421-6758 |
| 3 | Jackson-Madison County | 731-927-8540 |
| 4 | Mid-Cumberland Region | 615-650-7000 |
| 5 | Nashville-Davidson County | 615-340-0551 |
| 6 | South Central Region | 931-380-2532 |
| 7 | Upper Cumberland Region | 931-646-7505 |
| 8 | Southeast Region | 423-634-6065 |
| 9 | Chattanooga-Hamilton County | 423-209-8063 |
| 10 | Knoxville-Knox County | 865-215-5084 |
| 11 | East TN Region | 865-549-5287 |
| 12 | Northeast Region | 423-979-3200 |
| 13 | Sullivan County | 423-279-7545 |