

Sentinel Provider Influenza-Like Illness (ILI)¹ Surveillance Summary [\(health.state.tn.us/TNflu_report_archive.htm\)](http://health.state.tn.us/TNflu_report_archive.htm)

For the Week of December 19-25, 2010 (Week 51)

| Summary for | # Providers reporting | Total Providers | Total Regional ILI | Total Regional Patients | % ILI | Comparison to State ² |
|-----------------------------|-----------------------|-----------------|--------------------|-------------------------|--------------|----------------------------------|
| Chattanooga-Hamilton County | 3 | 5 | 0 | 292 | 0.0% | lower |
| East Tennessee Region | 6 | 7 | 8 | 1056 | 0.8% | lower |
| Jackson-Madison County | 1 | 1 | 63 | 917 | 6.9% | higher |
| Knoxville-Knox County | 2 | 4 | 1 | 406 | 0.2% | lower |
| Mid-Cumberland Region | 4 | 10 | 0 | 275 | 0.0% | lower |
| Memphis-Shelby County | 2 | 5 | 3 | 164 | 1.8% | |
| Nashville-Davidson County | 3 | 6 | 55 | 553 | 9.9% | higher |
| Northeast Region | 1 | 3 | 0 | 64 | 0.0% | |
| South Central Region | 2 | 3 | 0 | 135 | 0.0% | |
| Southeast Region | 4 | 4 | 6 | 400 | 1.5% | |
| Sullivan County | 2 | 2 | 0 | 130 | 0.0% | |
| Upper Cumberland Region | 2 | 5 | 2 | 350 | 0.6% | lower |
| West Tennessee Region | 5 | 6 | 0 | 251 | 0.0% | lower |
| State of Tennessee | 37 | 61 | 138 | 4993 | 2.76% | |

Influenza season is underway: ILI rates are now increasing quickly, with a corresponding increase in the proportion of specimens submitted that are confirmed as influenza. The percentage (%) of patients with ILI reported in Week 51 jumped to 2.76%, from 1.24% in Week 50. Of the 21 specimens received from Week 51, seven (33.3%) tested positive for influenza viruses: one influenza A from Dickson County, and 6 influenza Bs: Davidson County (2), Bradley County (3) and Sumner County (1). The CDC reports influenza activity (predominately type B) is greatest in the Southeastern US at this time. All sentinel providers should submit specimens regularly to identify circulating strains.

State Public Health Laboratory

Respiratory Viral Panel

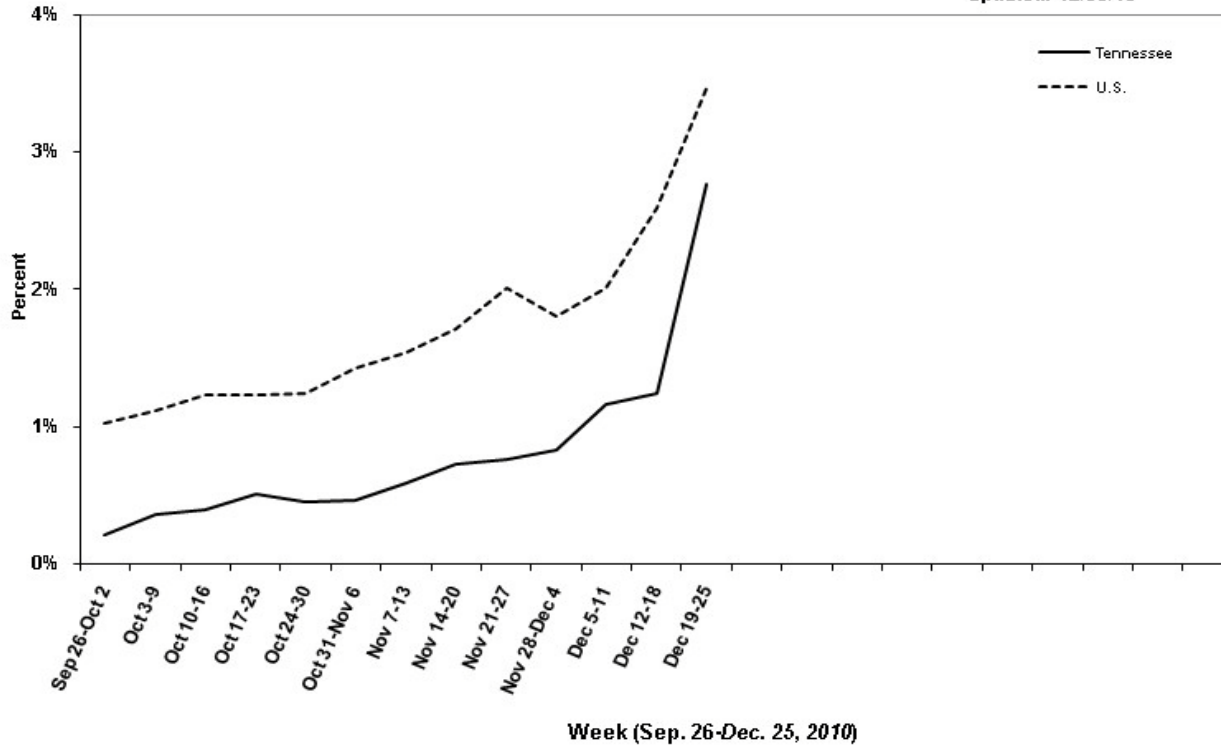
Number of Positive Specimens, by week

| Month | Nov. 2010 | | | | |
|-------------------------------|-----------|-----------|-----------|-----------|-----------|
| Week | Current | 50 | 49 | 48 | 47 |
| Total specimens tested | 21 | 25 | 49 | 24 | 14 |
| Influenza A 2009 H1N1 | 1 | 0 | 1 | 0 | 0 |
| Influenza A H3N2 | 0 | 1 | 1 | 0 | 0 |
| Influenza B | 6 | 6 | 5 | 2 | 0 |
| Respiratory Syncytial Virus A | * | * | * | * | * |
| Respiratory Syncytial Virus B | * | * | * | * | * |
| Parainfluenza 1 | * | * | * | * | * |
| Parainfluenza 2 | * | * | * | * | * |
| Parainfluenza 3 | * | * | * | * | * |
| Rhinovirus | * | * | * | * | * |
| Metapneumovirus | * | * | * | * | * |
| Adenovirus | * | * | * | * | * |

***Note: The RVP testing instrument is still being serviced. Only influenza PCR results are currently available.**

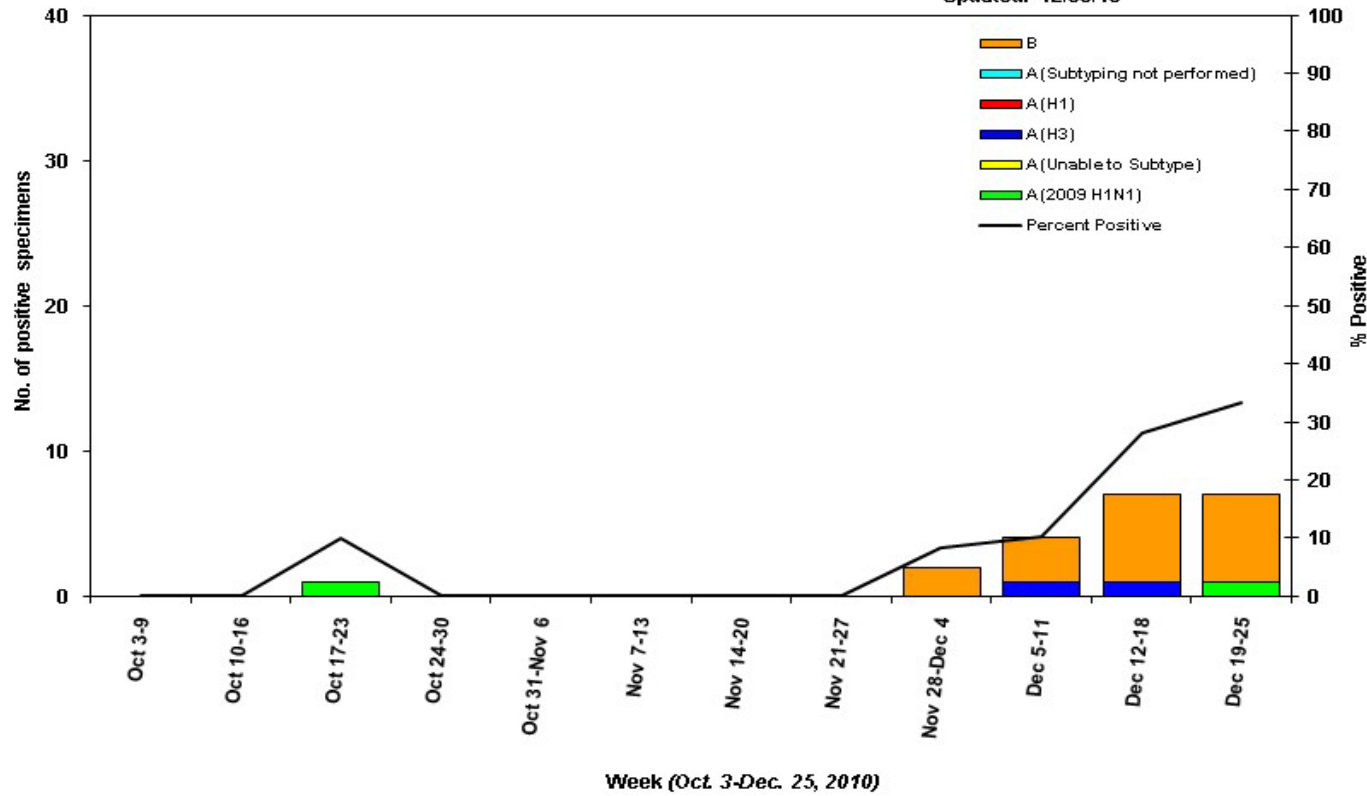
Percentage of Outpatient Visits Reported by the U.S. and Tennessee Outpatient Influenza-like Illness Surveillance Network (ILINet) as Influenza-like Illness, 2010

Updated: 12/30/10



Influenza Positive Tests Submitted to TN Dept. of Health Laboratory Services, Tennessee, 2010

Updated: 12/30/10



Reference Information for Sentinel Provider Network

1 Influenza-like illness (ILI) is defined as fever > 100 °F (37.8°C) plus cough and/or sore throat, in the absence of a known cause (other than influenza). Classification of ILI is based upon symptoms only and does not require any test.

2 The % of patients with ILI seen in each region is compared to the statewide average. Regions with % statistically-significantly different from the state average are noted as “higher” or “lower.” The CDC reports that the percentage of patients visiting outpatient healthcare providers in the Sentinel Provider Network (SPN) with influenza-like-illness (ILI) when influenza viruses are not circulating is expected to fall at or below a specific SPN baseline [nationwide = 2.2%, East South Central region (AL, TN, MS, KY) = 2.3%]. When the percentage of patients with ILI exceeds this baseline, this suggests that influenza viruses may be circulating.

Important information for Sentinel Providers

Sentinel Providers report ILI by the end of Tuesday following the end of the reporting week (www2a.cdc.gov/ilinet) and collect and ship specimens from ILI cases Monday through Thursday (maximum 10/week per provider). All Sentinel Provider specimens MUST be accompanied by the Influenza and Respiratory Viral Panel Submission form dated 8/18/2010, or testing will not be done. The Respiratory Viral Panel is only validated for nasopharyngeal (NP) specimens. Specimens collected from other sites cannot be tested.

Additional laboratory supplies can be obtained by completing the lab order supply form. To ensure the order is filled, please include the CDC Provider ID Code.

Contact Information

Submit weekly reports to: <http://www2a.cdc.gov/ilinet/> OR Fax 888-232-1322

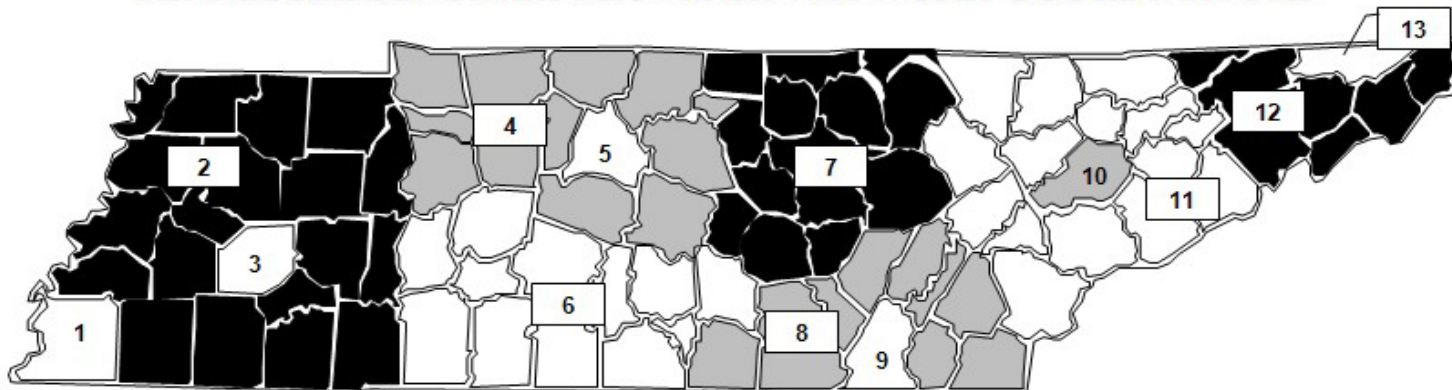
State Lab: Susan McCool 615-262-6351

SPN Questions:

State: Robb Garman or Robert Taylor 800-404-3006 OR 615-741-7247

County/Region: Regional SPN Coordinator (see map)

TENNESSEE SENTINEL PROVIDER NETWORK COORDINATORS



| | | |
|----|-----------------------------|--------------|
| 1 | Shelby County | 901-544-6991 |
| 2 | West TN Region | 731-423-6600 |
| 3 | Jackson-Madison County | 731-423-3020 |
| 4 | Mid-Cumberland Region | 615-650-7000 |
| 5 | Nashville-Davidson County | 615-340-5616 |
| 6 | South Central Region | 931-380-2532 |
| 7 | Upper Cumberland Region | 931-528-7531 |
| 8 | Southeast Region | 423-634-3124 |
| 9 | Chattanooga-Hamilton County | 423-209-8190 |
| 10 | Knoxville-Knox County | 865-215-5300 |
| 11 | East TN Region | 865-546-9221 |
| 12 | Northeast Region | 423-979-3200 |
| 13 | Sullivan County | 423-279-7545 |