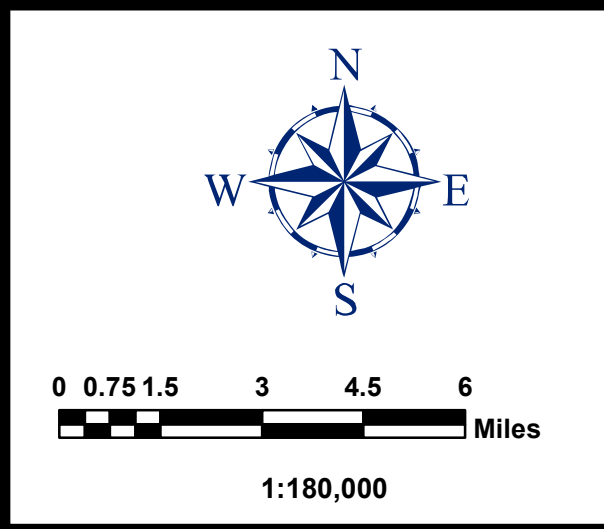


Map VIII
King County

Sources: Esri, HERE, DeLorme, USGS, Intermap, INCREMENT P, NRCan, Esri Japan, METI, Esri China (Hong Kong), Swis, Korea, Esri (Thailand), MapmyIndia, NGCC, © OpenStreetMap contributors, and the GIS User Community, Esri, HERE, DeLorme, MapmyIndia, © OpenStreetMap contributors, and the GIS user community

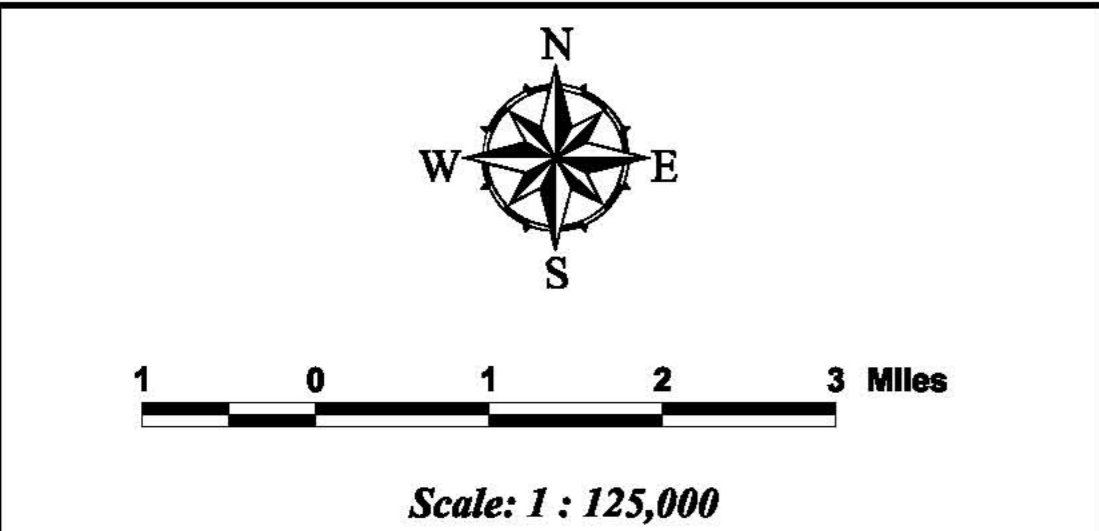
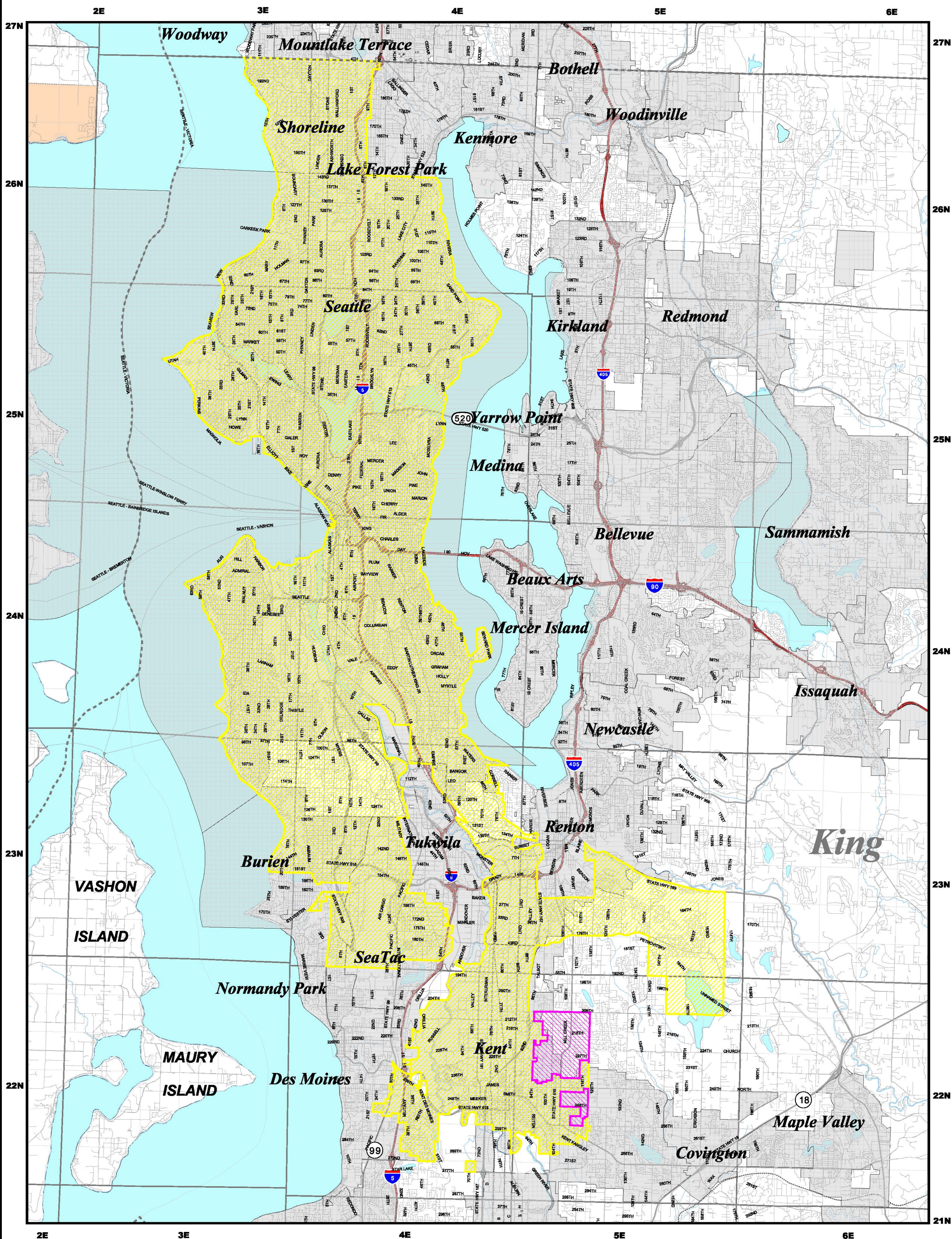


Legend	
	PID277, 295, 297, 373, 433, 437, and 438 SolidWaste Collection Service
	PID320, Solid Waste Collection Service (described territory to dumps).
	PID435, Solid Collection Service (Not requiring use of dump trk.)
	PID436, 439, 440, 441, 442, 452, and 453 Refuse Collection Service (Not requiring use of dump trk.)
	PID374, Refuse Collection Service (from commercial accts. or establishments).
	PID451, Solid Waste Collection Service (reclaimed lumber, brick, and other castoff materials).
	Township Lines
	County Lines

UTILITIES AND TRANSPORTATION COMMISSION
WASHINGTON STATE SOLID WASTE CERTIFICATE AUTHORITY
 August 2017
 Waste Management of WA, Inc., G-000237
Application No: Docket, TG-170685 Effective: 08/11/2017

WASHINGTON
UTC
 UTILITIES AND TRANSPORTATION COMMISSION

For more information contact:
 IS GIS
 (360) 664-1248



Map VIII - A
King County

UTILITIES AND TRANSPORTATION COMMISSION
WASHINGTON STATE SOLID WASTE CERTIFICATE AUTHORITY
 January 2005

Waste Management of WA, Inc.
 Certificate: G-000237

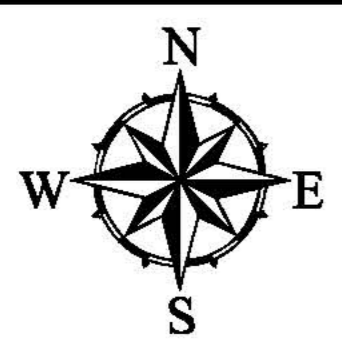
For more information contact:
 Roy DeJes
 Cartographic Tech
 (360) 864-1248

Legend

Application No. GA-079324 Docket No. TG041965 Effective: 01-01-2005

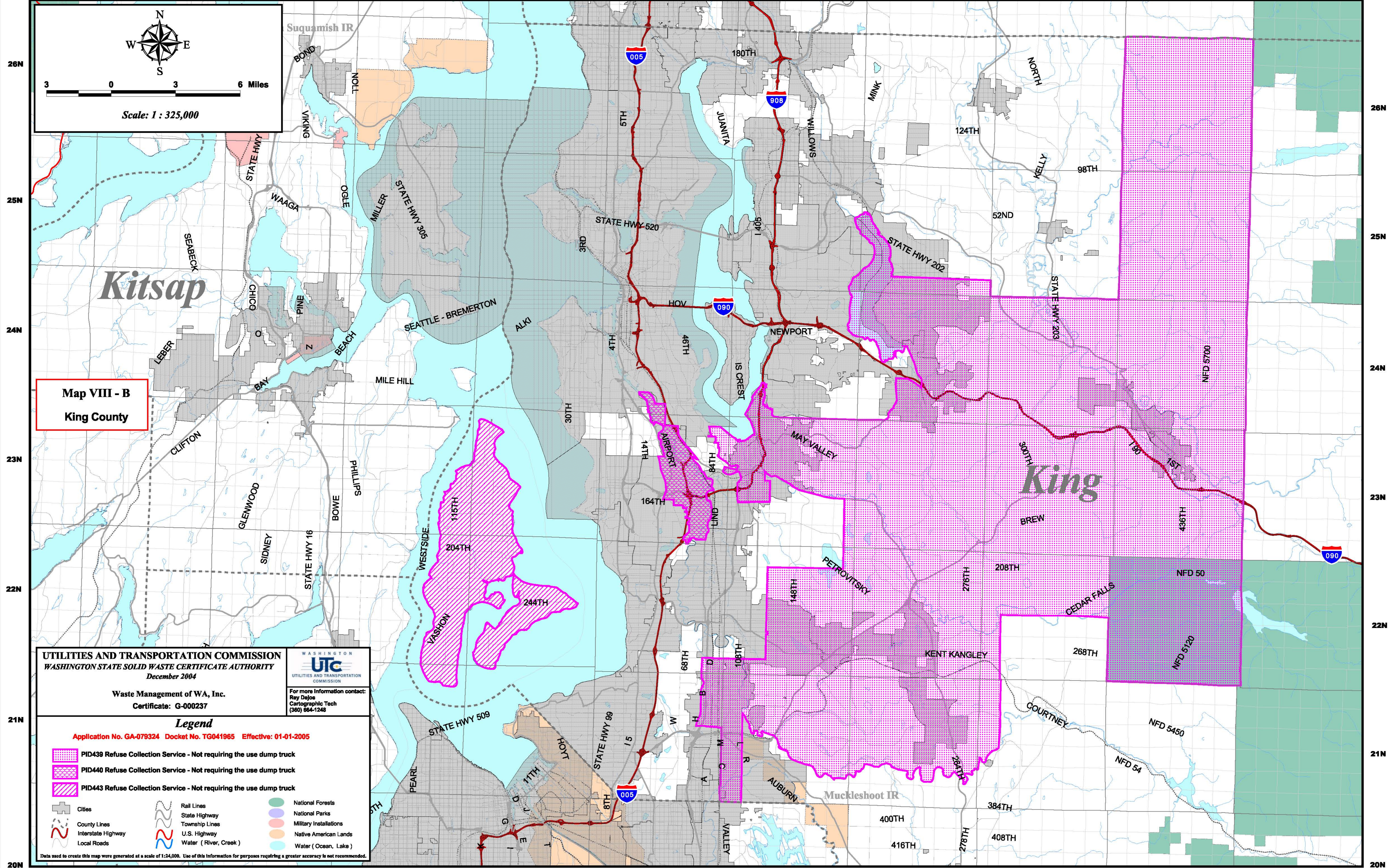
<ul style="list-style-type: none"> PID437 Solid Waste Collection Service PID441, 442 Refuse Collection Service (Not requiring the use of dump truck) Cities County Lines Interstate Highway Local Roads 	<ul style="list-style-type: none"> Rail Lines State Highway Township Lines U.S. Highway Water (River, Creek) 	<ul style="list-style-type: none"> National Forests National Parks Military Installations Native American Lands Water (Ocean, Lake)
--	---	---

Data used to create this map were generated at a scale of 1:25,000. Use of this information for purposes requiring a greater accuracy is not recommended.



3 0 3 6 Miles

Scale: 1 : 325,000



Map VIII - B
King County

UTILITIES AND TRANSPORTATION COMMISSION
WASHINGTON STATE SOLID WASTE CERTIFICATE AUTHORITY
December 2004

Waste Management of WA, Inc.
Certificate: G-000237

WASHINGTON
UTC
UTILITIES AND TRANSPORTATION
COMMISSION
For more information contact:
Ray DeJae
Cartographic Tech
(360) 864-1248

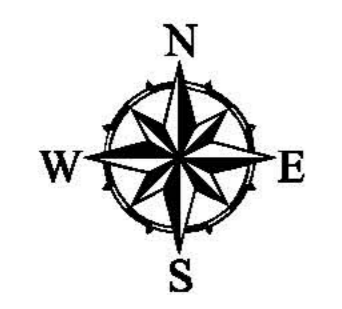
Legend

Application No. GA-079324 Docket No. TG041965 Effective: 01-01-2005

- PID439 Refuse Collection Service - Not requiring the use dump truck
- PID440 Refuse Collection Service - Not requiring the use dump truck
- PID443 Refuse Collection Service - Not requiring the use dump truck
- Cities
- County Lines
- Interstate Highway
- Local Roads
- Rail Lines
- State Highway
- Township Lines
- U.S. Highway
- Water (River, Creek)
- National Forests
- National Parks
- Military Installations
- Native American Lands
- Water (Ocean, Lake)

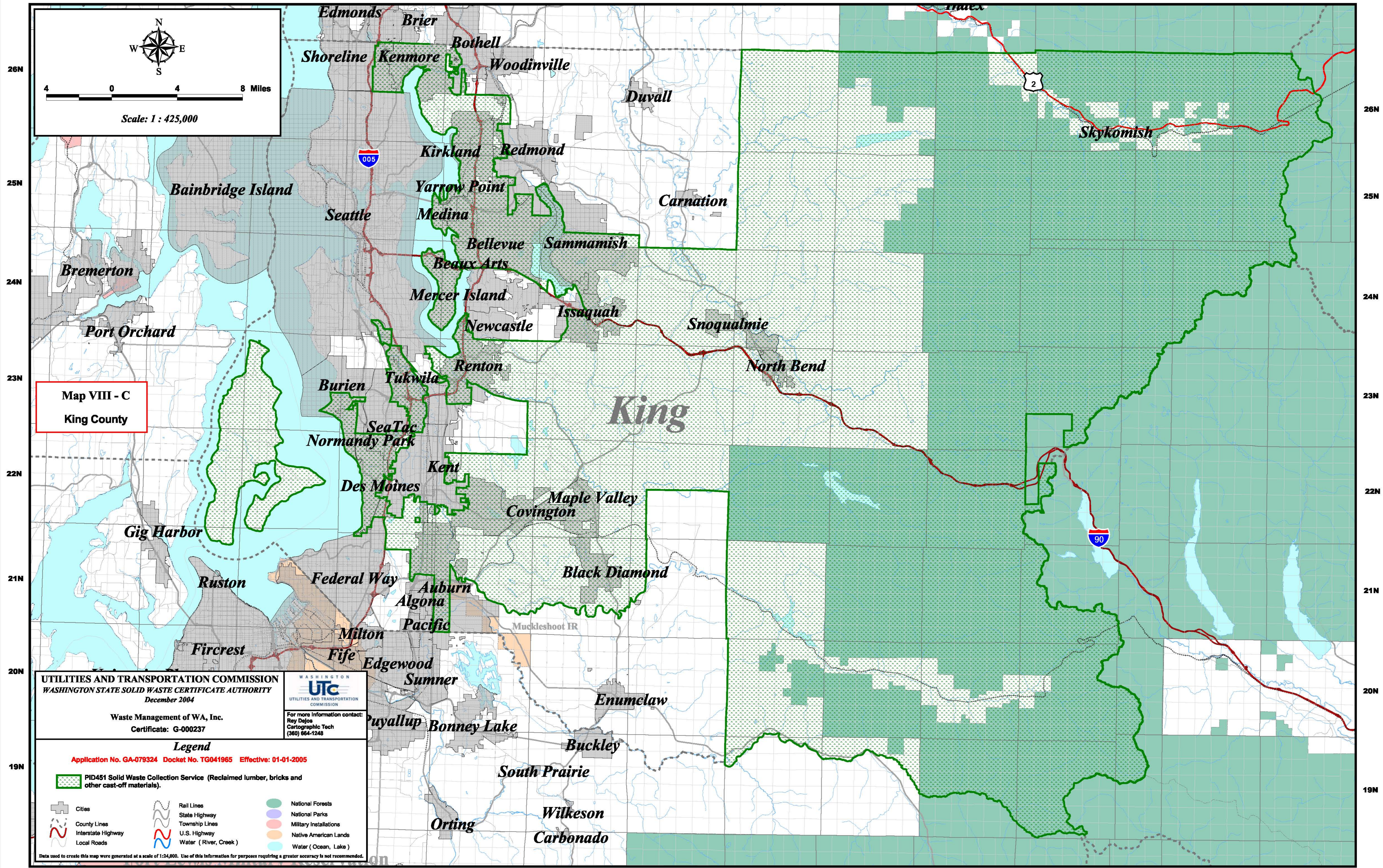
Data used to create this map were generated at a scale of 1:24,000. Use of this information for purposes requiring a greater accuracy is not recommended.

1E 2E 3E 4E 5E 6E 7E 8E 9E 10E 11E 12E 13E



4 0 4 8 Miles

Scale: 1 : 425,000



Map VIII - C
King County

UTILITIES AND TRANSPORTATION COMMISSION
WASHINGTON STATE SOLID WASTE CERTIFICATE AUTHORITY
December 2004
Waste Management of WA, Inc.
Certificate: G-000237

WASHINGTON
UTC
UTILITIES AND TRANSPORTATION
COMMISSION
For more information contact:
Ray DeJoes
Cartographic Tech
(360) 864-1248

Legend

- Application No. GA-079324 Docket No. TG041965 Effective: 01-01-2005
- PID451 Solid Waste Collection Service (Reclaimed lumber, bricks and other cast-off materials).
- Cities
- County Lines
- Interstate Highway
- Local Roads
- Rail Lines
- State Highway
- Township Lines
- U.S. Highway
- Water (River, Creek)
- National Forests
- National Parks
- Military Installations
- Native American Lands
- Water (Ocean, Lake)

Data used to create this map were generated at a scale of 1:24,000. Use of this information for purposes requiring a greater accuracy is not recommended.

1E 2E 3E 4E 5E 6E 7E 8E 9E 10E 11E 12E 13E 14E

3E

4E

5E

23N

23N

22N

22N

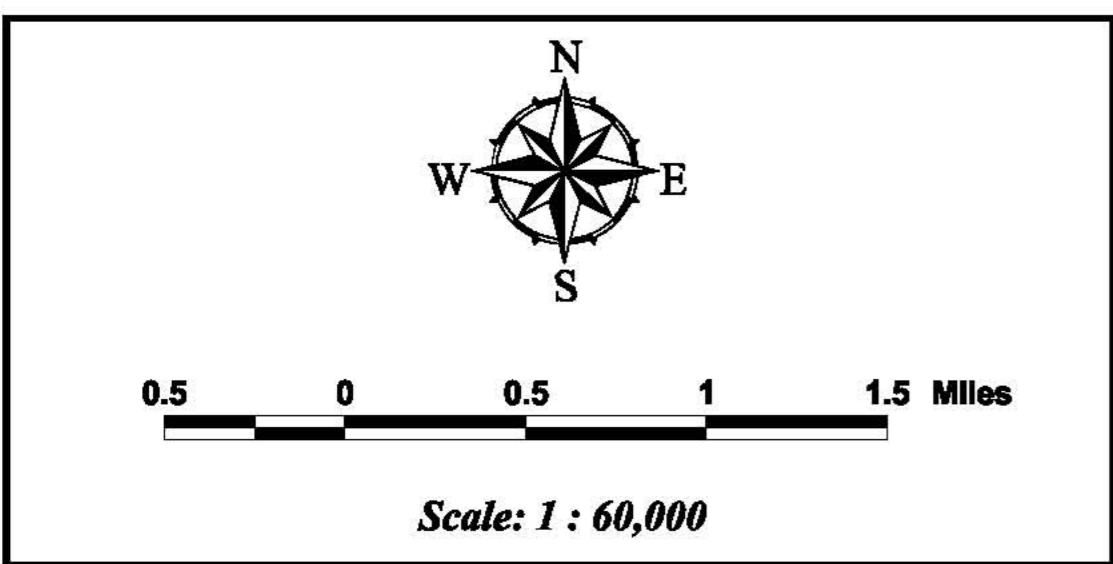
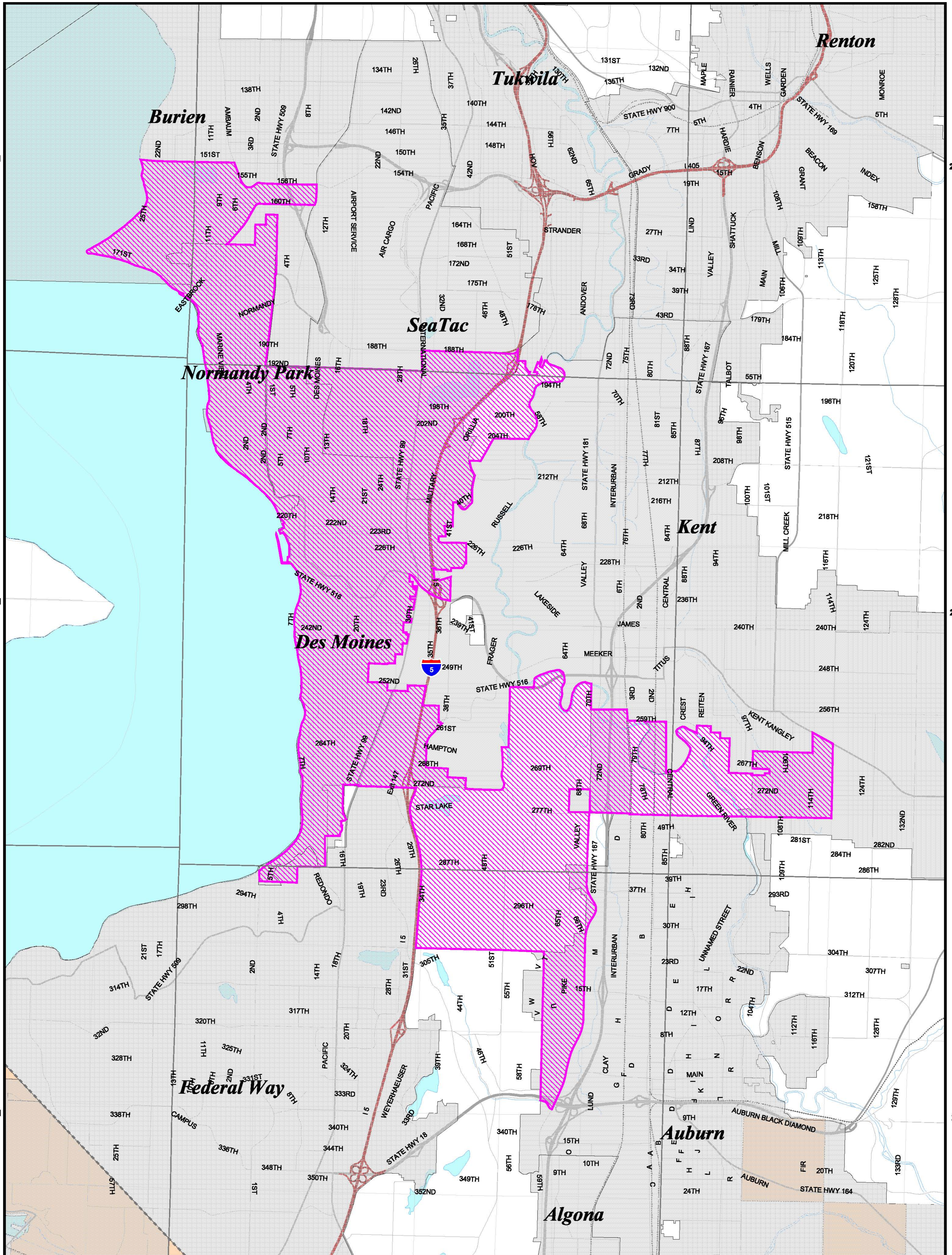
21N

21N

3E

4E

5E



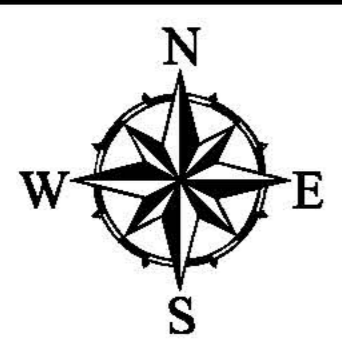
Map VIII - D
King County

UTILITIES AND TRANSPORTATION COMMISSION
WASHINGTON STATE SOLID WASTE CERTIFICATE AUTHORITY
 January 2005
 Waste Management of WA, Inc.
 Certificate: G-000237

Legend
Application No. GA-079324 Docket No. TG041965 Effective: 01-01-2005

- PID436 Refuse Collection Service (Not requiring the use of dump truck)
- Cities
- County Lines
- Interstate Highway
- Local Roads
- Rail Lines
- State Highway
- Township Lines
- U.S. Highway
- Water (River, Creek)
- National Forests
- National Parks
- Military Installations
- Native American Lands
- Water (Ocean, Lake)

Data used to create this map were generated at a scale of 1:24,000. Use of this information for purposes requiring a greater accuracy is not recommended.



0.6 0 0.6 1.2 Miles

Scale: 1 : 70,000

Map VIII - E
King County

UTILITIES AND TRANSPORTATION COMMISSION
WASHINGTON STATE SOLID WASTE CERTIFICATE AUTHORITY
January 2005

Waste Management of WA, Inc.
Certificate: G-000237

UTC
UTILITIES AND TRANSPORTATION COMMISSION

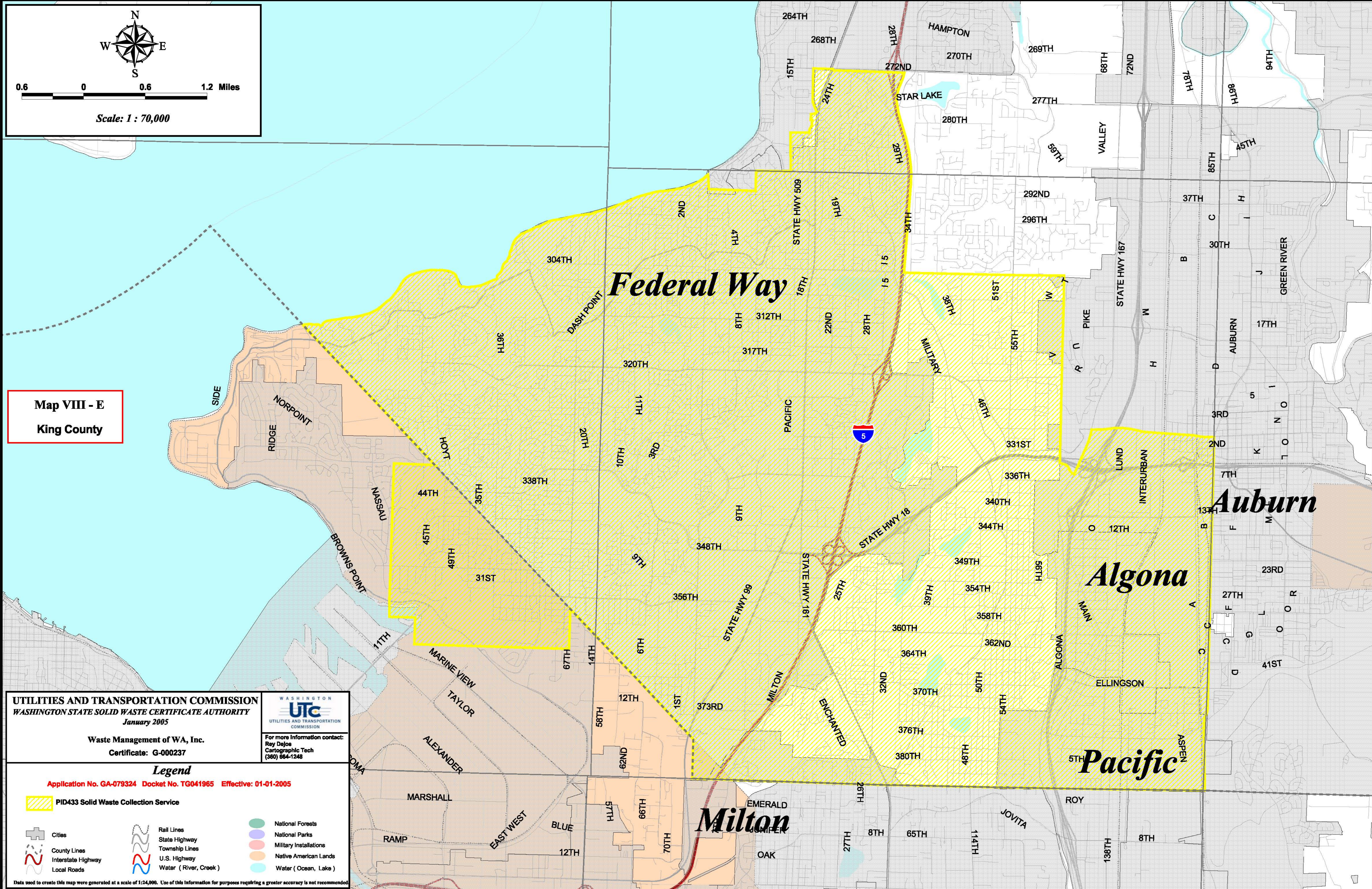
For more information contact:
Ray Dejos
Cartographic Tech
(360) 864-1248

Legend

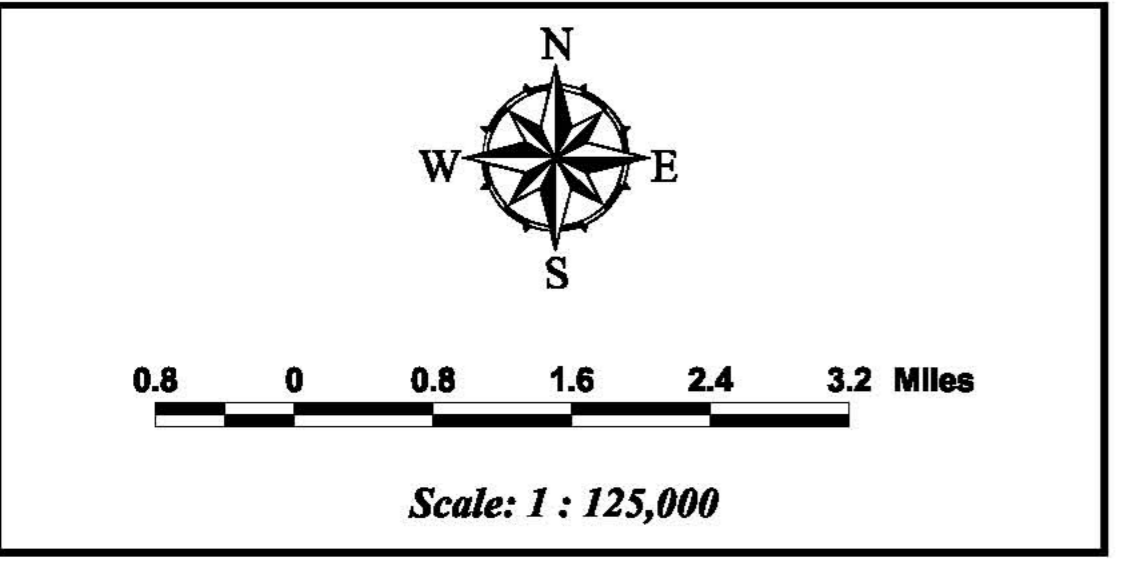
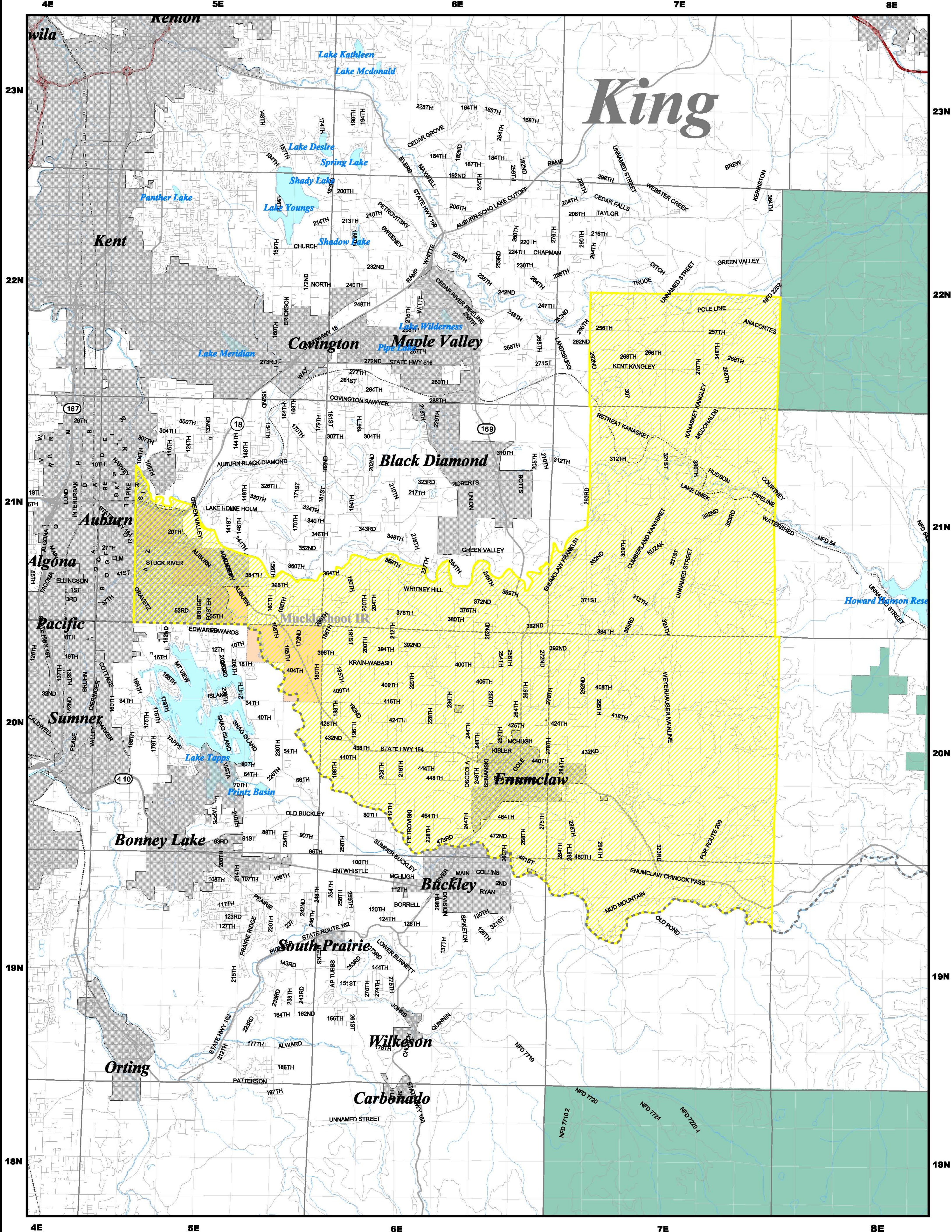
Application No. GA-079324 Docket No. TG041965 Effective: 01-01-2005

- PID433 Solid Waste Collection Service
- Cities
- County Lines
- Interstate Highway
- Local Roads
- Rail Lines
- State Highway
- Township Lines
- U.S. Highway
- Water (River, Creek)
- National Forests
- National Parks
- Military Installations
- Native American Lands
- Water (Ocean, Lake)

Data used to create this map were generated at a scale of 1:24,000. Use of this information for purposes requiring a greater accuracy is not recommended.



22N 21N 20N 3E 4E 5E



Map VIII - F
King County

UTILITIES AND TRANSPORTATION COMMISSION
WASHINGTON STATE SOLID WASTE CERTIFICATE AUTHORITY
 January 2005
 Waste Management of WA, Inc.
 Certificate: G-000237

Legend

Application No. GA-079324 Docket No. TG041965 Effective: 01-01-2005

PID295 Solid Waste Collection Service

Cities	Rail Lines	National Forests
County Lines	State Highway	National Parks
Interstate Highway	Township Lines	Military Installations
Local Roads	U.S. Highway	Native American Lands
	Water (River, Creek)	Water (Ocean, Lake)

Data used to create this map were generated at a scale of 1:24,000. Use of this information for purposes requiring a greater accuracy is not recommended.

4E

5E

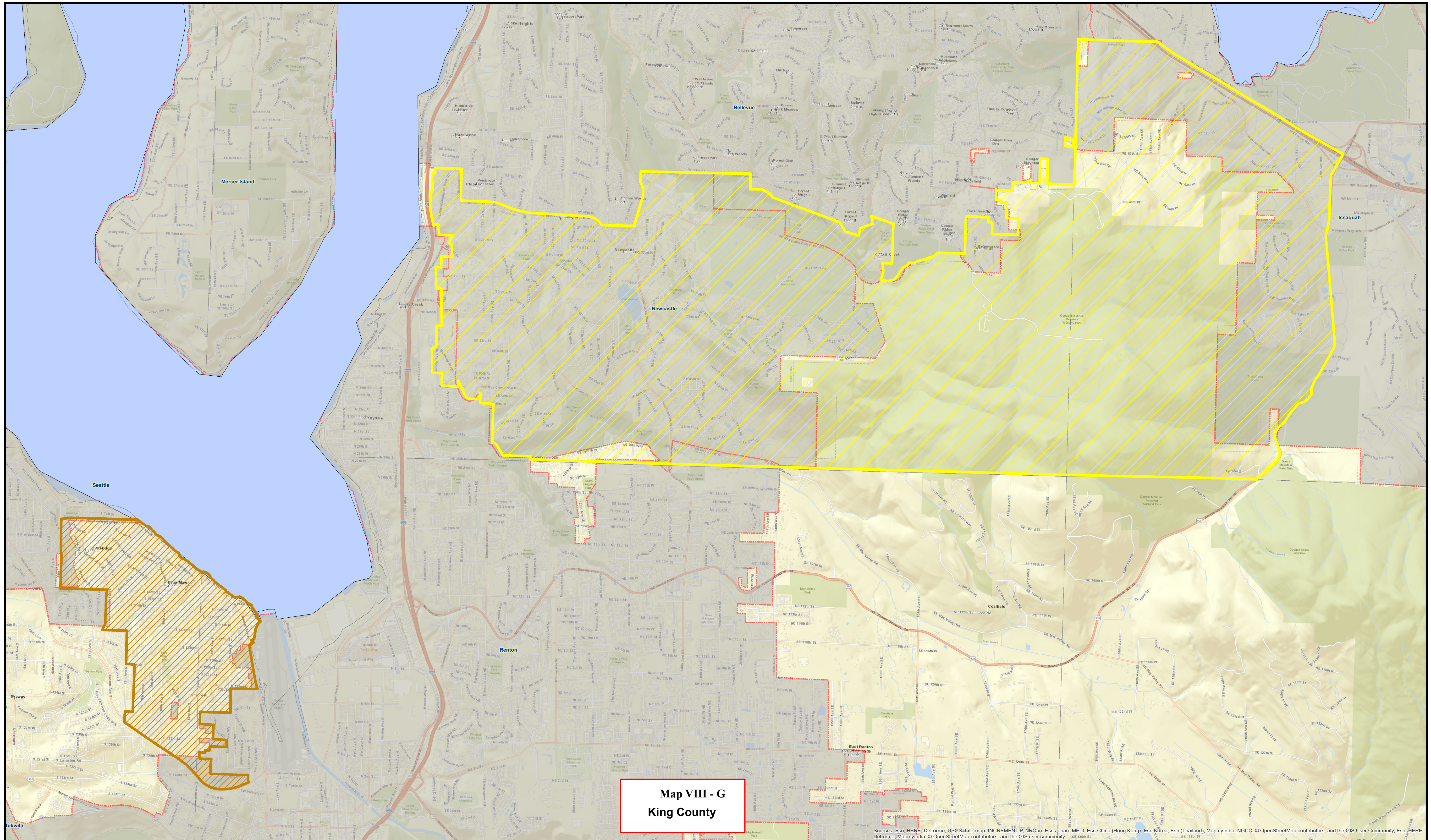
6E

24N

24N

23N




23N



**Map VIII - G
King County**

Sources: Esri, HERE, DeLorme, USGS, Intermap, INCREMENT P, NRCan, Esri Japan, METI, Esri China (Hong Kong), Esri Korea, Esri (Thailand), MapmyIndia, NGCC, OpenStreetMap contributors, and the GIS User Community, Esri, HERE, DeLorme, MapmyIndia, OpenStreetMap contributors, and the GIS user community

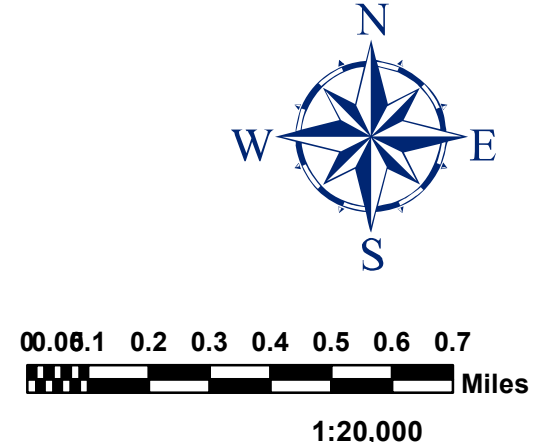
Legend

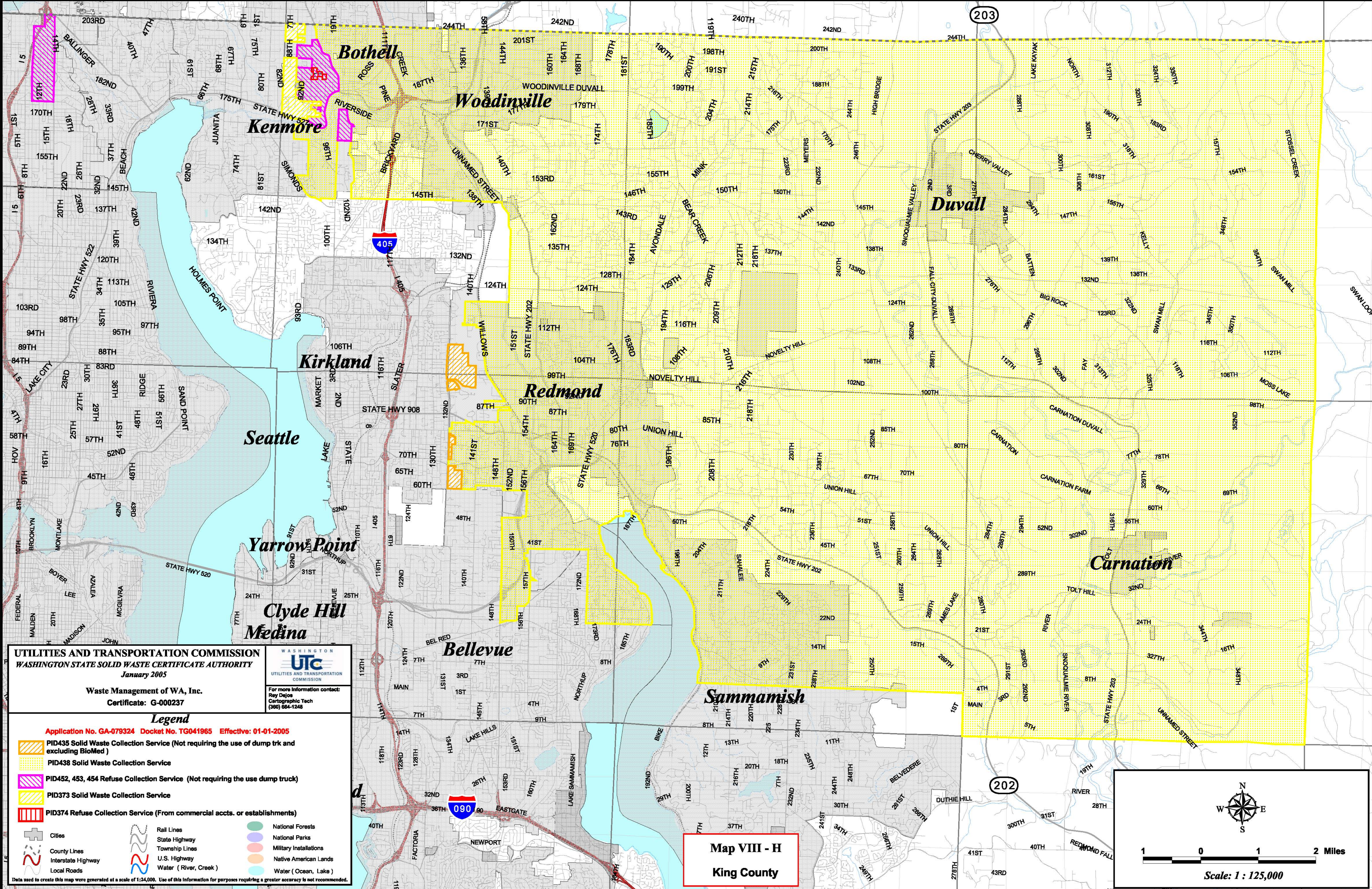
-  PID297 SolidWaste Collection Service
-  PID320, Solid Waste Collection Service (described territory to dumps).
-  City

**UTILITIES AND TRANSPORTATION
COMMISSION**
**WASHINGTON STATE SOLID WASTE
CERTIFICATE AUTHORITY**
 August 2017
 Waste Management of WA, Inc., G-000237
Application No: Docket, TG-170685 Effective: 08/11/2017

**WASHINGTON
UTC
UTILITIES AND TRANSPORTATION
COMMISSION**

For more information contact:
IS GIS
(360) 664-1248





UTILITIES AND TRANSPORTATION COMMISSION
WASHINGTON STATE SOLID WASTE CERTIFICATE AUTHORITY
 January 2005

Waste Management of WA, Inc.
 Certificate: G-000237

Legend

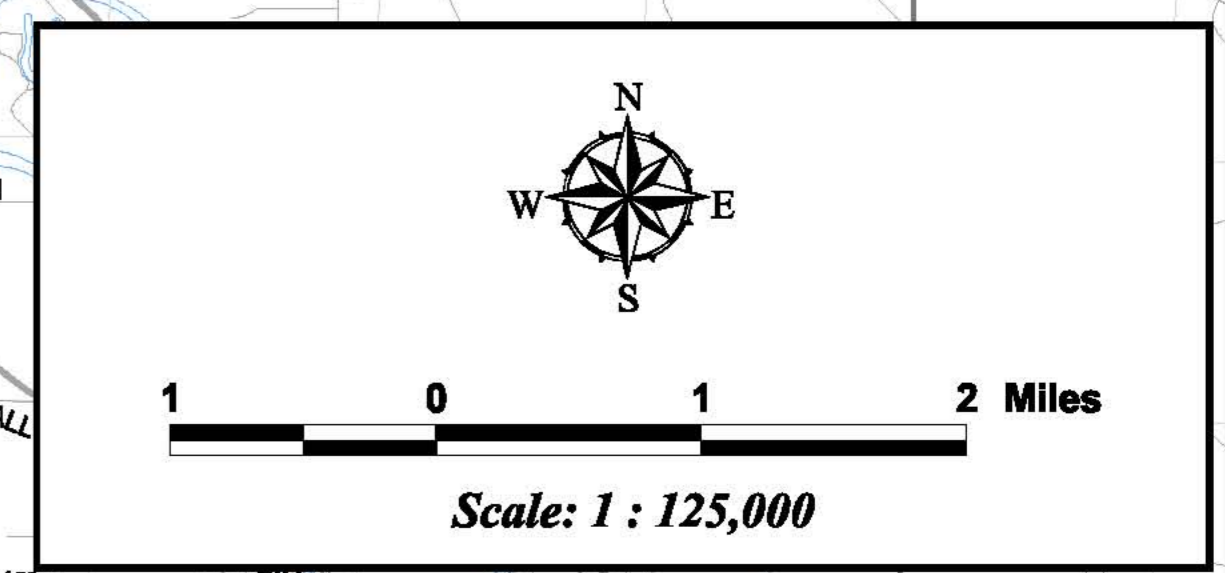
Application No. GA-079324 Docket No. TG041965 Effective: 01-01-2005

- PID435 Solid Waste Collection Service (Not requiring the use of dump truck and excluding BioMed)
- PID438 Solid Waste Collection Service
- PID452, 453, 454 Refuse Collection Service (Not requiring the use of dump truck)
- PID373 Solid Waste Collection Service
- PID374 Refuse Collection Service (From commercial acct. or establishments)

Cities	Rail Lines	National Forests
County Lines	State Highway	National Parks
Interstate Highway	Township Lines	Military Installations
Local Roads	U.S. Highway	Native American Lands
	Water (River, Creek)	Water (Ocean, Lake)

Data used to create this map were generated at a scale of 1:24,000. Use of this information for purposes requiring a greater accuracy is not recommended.

Map VIII - H
King County



10E

11E

12E

23N

23N

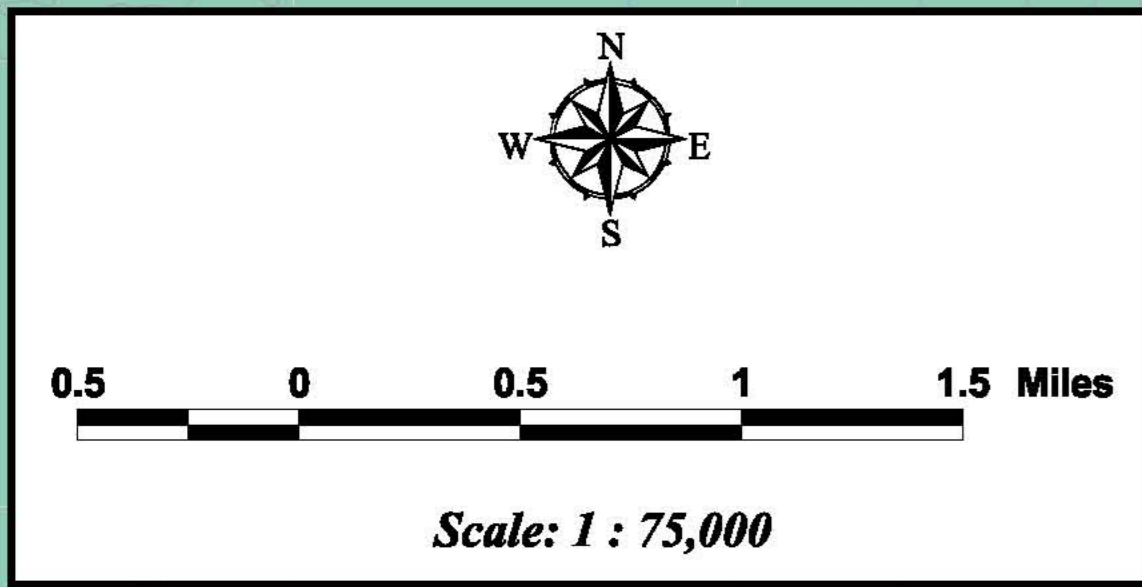
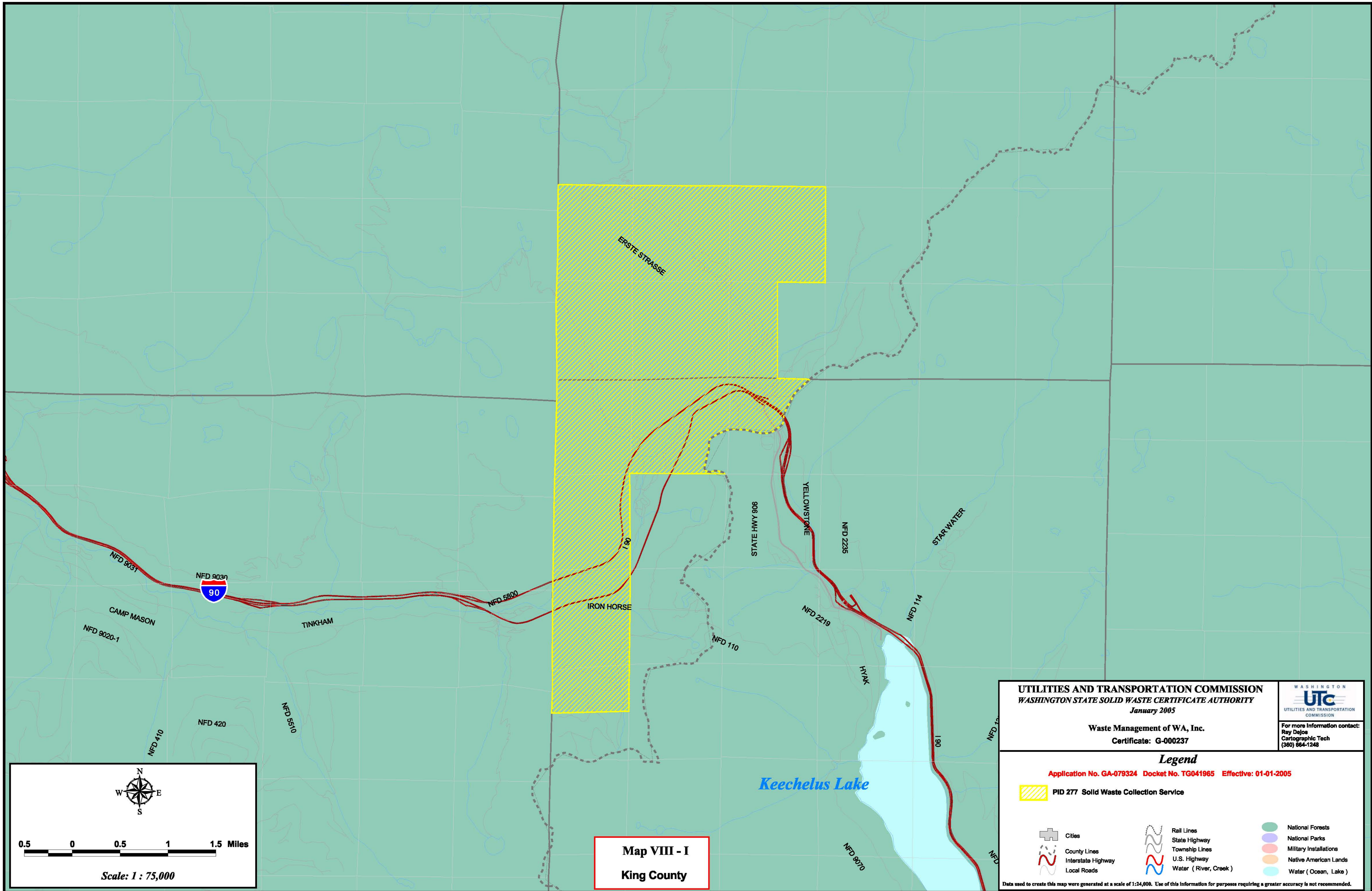
22N

22N

10E

11E

12E



Map VIII - I
King County

<p>UTILITIES AND TRANSPORTATION COMMISSION WASHINGTON STATE SOLID WASTE CERTIFICATE AUTHORITY January 2005</p> <p>Waste Management of WA, Inc. Certificate: G-000237</p>		<p>WASHINGTON UTC UTILITIES AND TRANSPORTATION COMMISSION</p> <p>For more information contact: Ray Dejos Cartographic Tech (360) 864-1248</p>
<p>Legend Application No. GA-079324 Docket No. TG041965 Effective: 01-01-2005</p>		
<p> PID 277 Solid Waste Collection Service</p>		
<p> Cities</p> <p> County Lines</p> <p> Interstate Highway</p> <p> Local Roads</p>	<p> Rail Lines</p> <p> State Highway</p> <p> Township Lines</p> <p> U.S. Highway</p> <p> Water (River, Creek)</p>	<p> National Forests</p> <p> National Parks</p> <p> Military Installations</p> <p> Native American Lands</p> <p> Water (Ocean, Lake)</p>
<p><small>Data used to create this map were generated at a scale of 1:24,000. Use of this information for purposes requiring a greater accuracy is not recommended.</small></p>		