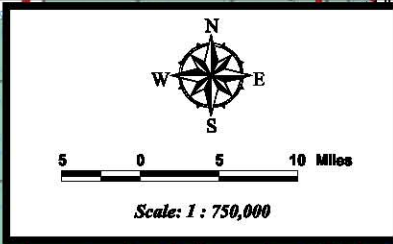
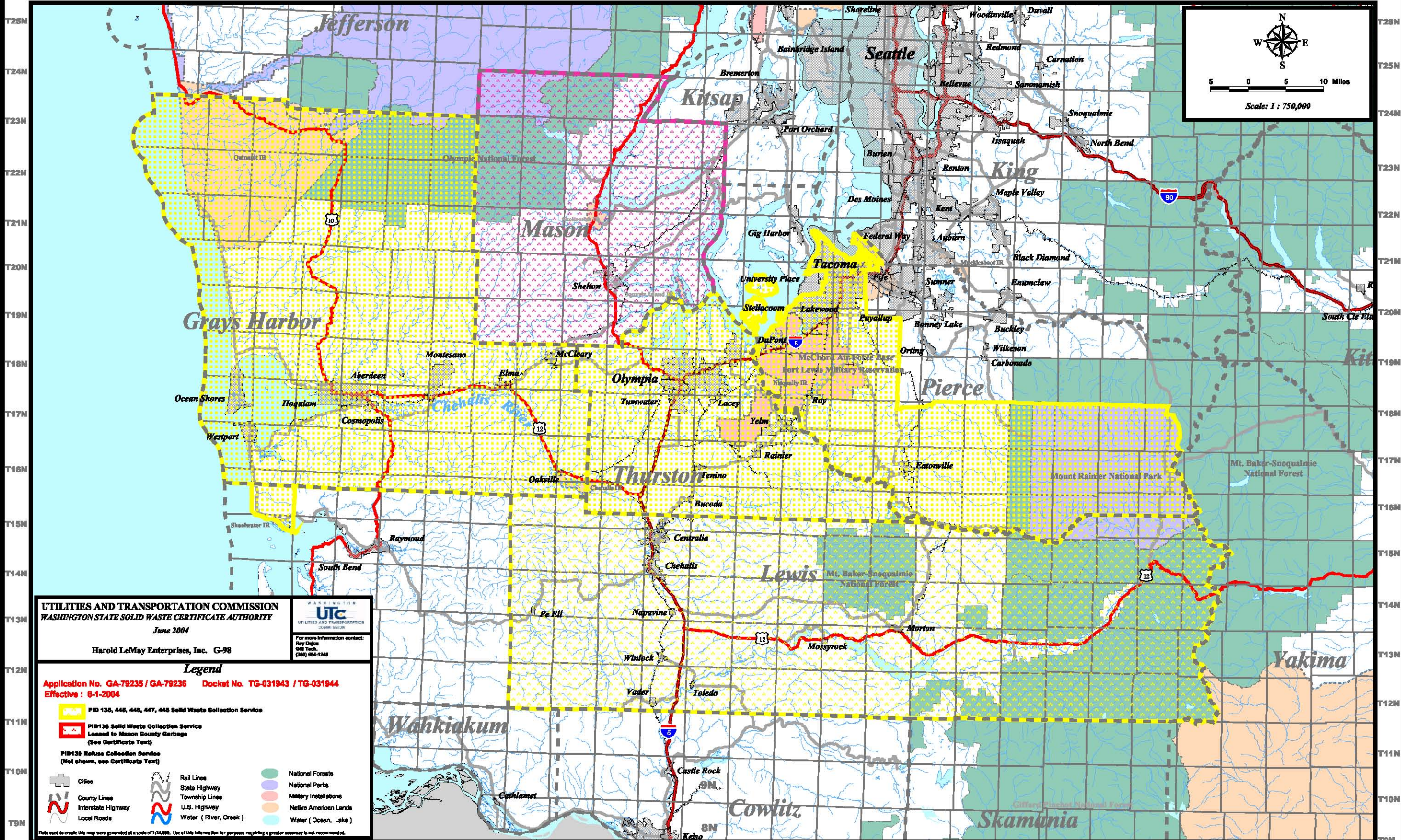


R13W R12W R11W R10W R9W R8W R7W R6W R5W R4W R3W R2W R1W R1E R2E R3E R4E R5E R6E R7E R8E R9E R10E R11E



**UTILITIES AND TRANSPORTATION COMMISSION**  
**WASHINGTON STATE SOLID WASTE CERTIFICATE AUTHORITY**  
June 2004  
Harold LeMay Enterprises, Inc. G-98



**Legend**

- Application No. GA-79235 / GA-79236    Docket No. TG-031943 / TG-031944
- Effective : 6-1-2004
- PID 135, 445, 446, 447, 448 Solid Waste Collection Service
- PID138 Solid Waste Collection Service Leased to Mason County Garbage (See Certificate Text)
- PID139 Refuse Collection Service (Not shown, see Certificate Text)
- Cities
- County Lines
- Interstate Highway
- Local Roads
- Rail Lines
- State Highway
- Township Lines
- U.S. Highway
- Water (River, Creek)
- National Forests
- National Parks
- Military Installations
- Native American Lands
- Water (Ocean, Lake)

Data used to create this map were generated at a scale of 1:254,896. Use of this information for purposes requiring a greater accuracy is not recommended.

R13W R12W R11W R10W R9W R8W R7W R6W R5W R4W R3W R2W R1W R1E R2E R3E R4E R5E R6E R7E R8E R9E R10E R11E R12E