



## Addendum No. 2

To: Interested Parties  
From: Blair Reynolds, Chief Project Manager  
Division of Engineering  
Date: Friday, January 24, 2020  
Project: Sheriff's Office Fuel Center Upgrades

---

Acknowledge receipt of this **Addendum No. 2** by signing in the space provided below and returning with your Bid.

Failure to sign and return with your bid may subject the Bidder to disqualification. This **Addendum No. 2** forms a part of the Bid Documents, its supplements and modifies them as outlined herein.

This **Addendum No. 2** consists of 4 pages, including this page.

I hereby acknowledge receipt of **Addendum No. 2**:

By: \_\_\_\_\_ Date \_\_\_\_\_  
Signed Name

\_\_\_\_\_  
Typed Name

\_\_\_\_\_  
Title

For (Firm): \_\_\_\_\_

## **Addendum No. 2**

Sheriff's Office Fuel Center Upgrades

Date Issued: Friday, January 24, 2020

**Bids Due: Friday, January 31, 2020 2:00 p.m., local time**

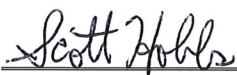
**The following addendum material is hereby made a part of the Bid Documents. Please note the following changes, information, and/or instructions in connection with the proposed work and submit proposals accordingly.**



---

Blair Reynolds  
Chief Project Manager

By Authority of:  
Board of County Commissioners  
Washington County, Maryland



---

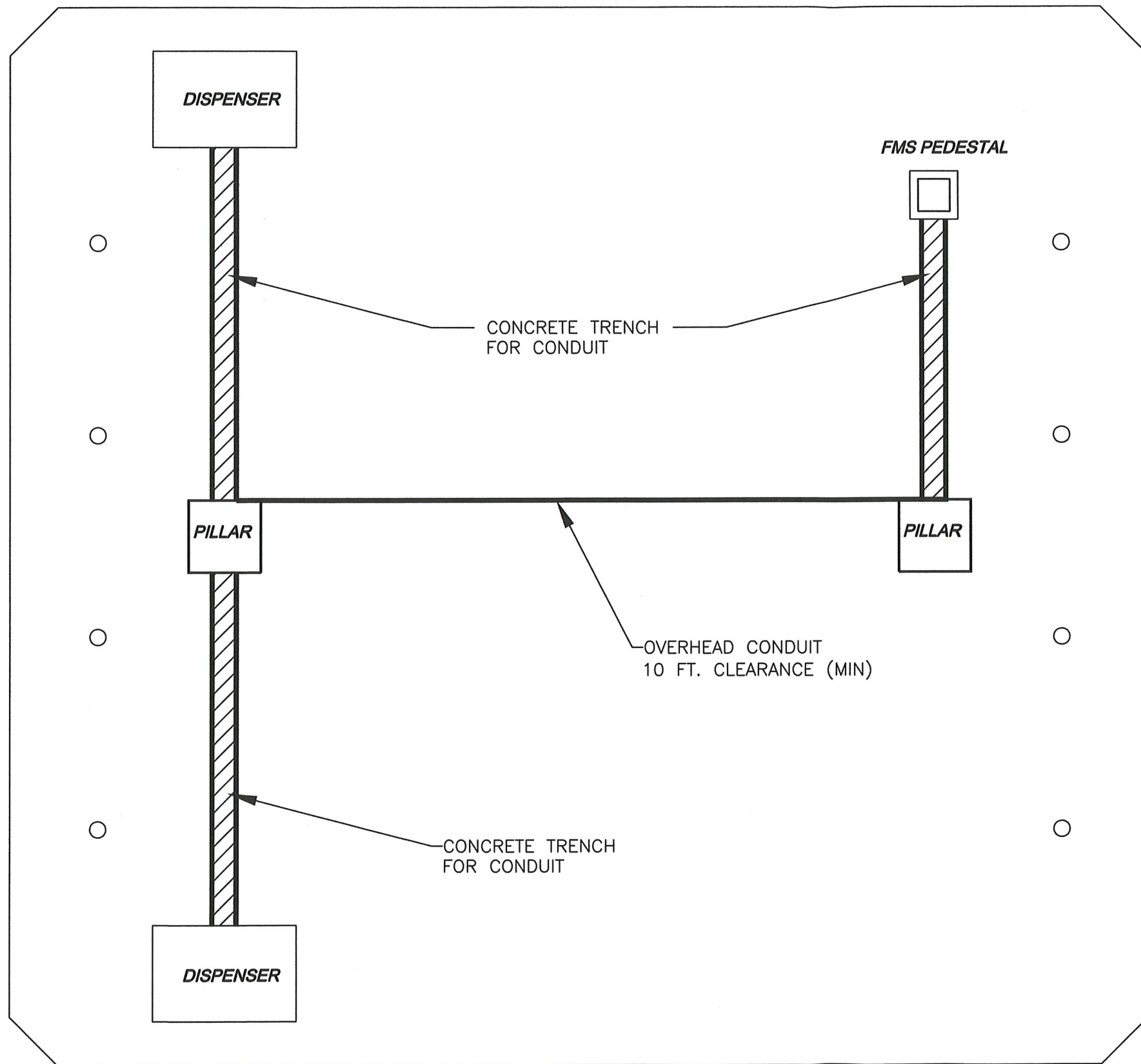
Scott Hobbs, P.E.  
Director – Division of Engineering

Sheriff's Office Fuel Center Upgrades

Addendum No. 2

Item 1.01      **REVISED CONDUIT INSTALLATION AND LOCATIONS** - See Attachment No. 1 for revised conduit installation and locations.

Item 1.02      **UNDER-DISPENSER CONTAINMENT** – Containment Sump installation is required for each dispenser and should be included in the lump sum bid price for the project. The work shall include all material, labor, equipment, and incidentals necessary to complete the work.



## ATTACHMENT NO. 1

### NOTES:

1. CONCRETE TRENCHING TO BE PERFORMED BY OTHERS.
2. TRENCHED CONDUIT FROM DISPENSERS TO FMS PEDESTAL TO BE SURFACE MOUNTED TO BRICK PILLARS AND RAISED TO A 10' CLEARANCE FOR OVERHEAD SPAN BETWEEN PILLARS

SCALE: NOT TO SCALE