



Addendum No. 2

To: Interested Parties
From: John E. Van Riper, Project Engineer
Division of Engineering
Date: Friday, October 12, 2018
Project: Washington County Employee Parking Facility

Acknowledge receipt of this **Addendum No. 2** by signing in the space provided below and returning with your Bid.

Failure to sign and return with your bid may subject the Bidder to disqualification. This **Addendum No. 2** forms a part of the Bid Documents, its supplements and modifies them as outlined herein.

This **Addendum No. 2** consists of 13 pages, including this page.

I hereby acknowledge receipt of **Addendum No. 2**:

By: _____ Date _____
Signed Name

Typed Name

Title

For (Firm): _____

Addendum No. 2

Washington County Employee Parking Facility

Date Issued: Friday, October 12, 2018


Bids Due: Friday, October 19, 2018 11:00 a.m., local time

The following addendum material is hereby made a part of the Bid Documents. Please note the following changes, information, and/or instructions in connection with the proposed work and submit proposals accordingly.



John E. Van Riper, Project Engineer

By Authority of:
Board of County Commissioners
Washington County, Maryland



Scott Hobbs, P.E.
Director – Division of Engineering

Addendum No. 2

Questions from Pre-Bid Meeting:

- Item 2.01 **Q1: Is there a cost for City Permits?** No, The County will assist with obtaining city permits required for this project.
- Item 2.02 **Q2: Is the fence required to remain?** The County is currently renting the fence to prevent traffic from entering and exiting through the gravel lot. It is the Contractor's discretion to utilize the fence; Communication is needed with The County to remove the fence when required. A silt fence will be required around the Limit of Disturbance.
- Item 2.03 **Q3: Is the paint to be waterborne paint?** Yes.
- Item 2.04 **Q4: What is the anticipated start date?** As soon as possible following contract execution. Mid November start date is anticipated.
- Item 2.05 **Q5: Are the Excavation Quantities Correct?** This was addressed in Addendum 1 via updated quantities and through the following statement: *“Quantity for unclassified excavation has been revised. It is anticipated that in fill applications, the contractor shall be able to build upon the existing stone aggregate which shall function as the pavement stone base provided the material meets proof rolling acceptance, and shall remove aggregate as needed in cut applications to install the specified site features. Excavated stone aggregate may be used as a fill material elsewhere on site as needed.”*
- Item 2.06 **Q6: Due to the time of construction, is placement of 19.0mm HMA going to be considered substantial completion for the project if temperatures don't allow for placement of 9.5mm HMA surface?** The County will consider the project to be substantially complete when the curb and gutter, drainage system, 19.0 mm HMA base, and pavement markings have been installed and the County has use of the parking facility. The contractor may follow up with surface asphalt paving at a later time when material is available and temperatures permit placement. An asphalt adjustment pay item has been included in the project. Any future asphalt placement and line painting after substantial completion shall occur on a weekend or recognized County holiday. Refer to Attachments “A” and “B” for revised Bid Sheet and Asphalt Adjustment Specification.
- Item 2.07 **Q7: Is there an item for testing?** No, all costs associated with testing of materials is considered incidental to that item.
- Item 2.08 **Q8: Does Wareham Alley have to remain open while work is being performed?** It is anticipated that at least one lane of Wareham Alley will remain passable. The contractor may shift traffic through the project site provided at least a smooth gravel

surface is provided. Any road closure would require a traffic control plan to be approved by the County and City at the expense of the Contractor.

Item 2.09 **Q9: Will the new plans show the E&S layout of the silt fence?** This has been addressed in Addendum 1.

Questions from RFI via ecbidquestions@washco-md.net

Item 2.10 **Q10 from Philip Horne of David H. Martin: Is there an engineer's estimate available for bonding?** This Project Classification is Cost Group Class "B," \$100,001 Up to \$500,00. **Also it appears that this is not scale wage, is that correct?** This project is not a scale wage.

Item 2.11 **Q11 from Don Pyatt of Huntzberry Brothers Inc.: Drawing #2 of 10 incorrect scale?** Yes, this should be a 1 inch = 10 ft. scale, not 1 inch = 20ft. Please see Attachment "C" for revised drawings

Item 2.12 **Q12 from Don Pyatt of Huntzberry Brothers Inc.: Bid Item #301 indicates Removal of inlets? Dwg #1 of 10 indicates one inlet with piping. Does piping get removed also?** Yes, pipe should be removed with the inlet.

Item 2.13 **Q13 from Don Pyatt of Huntzberry Brothers Inc.: Bid Item #603 refers to sidewalk and entrance apron, please separate as sidewalks and aprons are different unit prices.** For the purpose of bid submission, Sidewalk and Entrance Apron are included under same Pay Item (Item #603 CONCRETE SIDWALK REPLACEMENT AND ENTRANCE APRONS).

Item 2.14 **Q14 from Don Pyatt of Huntzberry Brothers Inc.: Are the bid forms to be changed along with drawings?** Yes, all bid forms have been updated and issued with Addendum 1 and 2.

Item 2.15 **Q15 from Don Pyatt of Huntzberry Brothers Inc.: Located the telephone pole to be removed. Located the water meter tile to be removed?** These have been addressed on sheet 1 of the Plans. The water meter tile is located at station 0+18 on the Right Side. The location of the telephone pole to be removed is located at station 1+73 on the Right Side. The telephone pole does not have any utilities attached to it.

Item 2.16 **Q16 from Larry Weigle of Excavating Associates, Inc.: Bid item calls for 85 L.Ft. 6" perf pipe, bid item 306 calls for 100 L.Ft. 6" pipe. Profile on plan sheet 11 shows all of the 6" pipe to be perforated pipe (+/- 175 L.Ft.) Where do we install 6" non-perforated pipe?** Non Perforated pipe is to be installed From STA 0+00 to STA 0+94 shown on revised drawing sheet 11 (Attachment "C"). Perforated pipe is to be installed

Washington County Employee Parking Facility

from STA 0+94 to STA 1+76 as shown on the revised drawing sheet 11 (Attachment “C”)

- Item 2.17 Plan sheets 1, 2, and 11 have been revised:
- Sheet 1 changes include re-labeling of Drainage system
 - Sheet 2 changes include fixing incorrect elevation labels for coordinates
 - Sheet 3 changes include re-labeling of Drainage system and Stationing

Attachments

Attachment A: Revised Bid Form Section 500 (1 Page)

Attachment B: Specification for “ITEM 506 PRICE ADJUSTMENT FOR ASPHALT BINDER” (1 Page)

Attachment C: Revised Bid Set Plans sheets 1, 2 and 11 (3 Pages)

Attachment A
Revised Bid Form Section 500

BID FORMS WASHINGTON COUNTY EMPLOYEE PARKING FACILITY CONTRACT NO. MS-EP-241-28 PROJECT NO. 28-241

ITEM	CODE	QUANTITY	UNIT	ITEM DESCRIPTION	UNIT PRICE		ITEM TOTAL	
501		1070	S.Y.	6" GRADED AGGREGATE BASE COURSE	_____	___	_____	___
502		140	TON	HOT MIX ASPHALT SUPERPAVE SURFACE, 9.5mm	_____	___	_____	___
503		370	TON	HOT MIX ASPHALT SUPERPAVE BASE, 19.0mm	_____	___	_____	___
504		175	L.F.	SAW CUTTING	_____	___	_____	___
505		LUMP SUM	L.S.	PAVEMENT MARKINGS	_____	___	_____	___
506		500	EA	PRICE ADJUSTMENT FOR ASPHALT BINDER	<u>1</u>	<u>00</u>	<u>500</u>	<u>00</u>
<p>End Category 500 Contract No. MS-EP-241-28 Addendum 2</p>				<p>Total This Sheet</p>			_____	___

Attachment B

Specification for

“ITEM 506 PRICE ADJUSTMENT FOR

ASPHALT BINDER”

Item No. 506 – PRICE ADJUSTMENT FOR ASPHALT BINDER

- A. An adjustment will be made to the final Contract unit price of HMA. If the price of liquid asphalt binder fluctuates significantly from the prevailing price to the price at the month of placement; adjustments will be in accordance with section 504.04.01 of the MDOT SHA Standard Specifications Section provided herein and shall be determined and paid for on a monthly basis. The Contractor shall submit his invoice for payment of bituminous pavement placed along with any corresponding price adjustment request for liquid asphalt binder for the affected material as well as calculations in order for a price adjustment to be recognized by the County.

504.04.01 Price Adjustment for Asphalt Binder. A Price Adjustment (PA) will be made to provide additional compensation to the or a credit to the for the fluctuation in the cost of asphalt binder.

For adjustment purposes, the prevailing base index price will be the price specified for PG 64-22 (PG64S-22) at time of bid opening. Cost differentials between PG 64-22 (PG64S-22) and a binder specified shall be included in the price bid per ton for Asphalt. A historical database will be maintained by the .

The PA will be made when the index price for the month of placement increases or decreases more than 5 percent of the prevailing base index price. Computations will be as follows:

Percent Change = $((P_p - P_b) / P_b) \times 100$

$PA = T \times Q \times ((P_p - (D \times P_b))$

Where:

PA= Price Adjustment for the current month

T = Design target asphalt content expressed as a decimal

Q = Quantity of asphalt placed for the current month

P_p = Index price for PG 64-22(PG64S-22) asphalt binder per ton for the month of placement

D = 1.05 for increases over 5 percent; 0.95 for decreases over 5 percent

P_b = Prevailing base index price for PG 64-22 (PG64S-22) asphalt binder per ton

Attachment C
Revised Bid Set Plans
Sheets 1, 2 and 11

★ BID SET NOT FOR CONSTRUCTION

DETECTABLE WARNING SYSTEM		
STATION	LOCATION	SF
STA. 0+11	RIGHT	10
STA. 0+14	RIGHT	10
STA. 0+14	LEFT	10

DRIVEWAY ENTRANCE SEE MODIFIED CITY STANDARD T-062 DETAIL		
STATION	WIDTH	LOCATION
STA. 0+05 FACE OF CURB TO STA. 0+16 BACK EDGE OF DRIVEWAY	12 FT.	LEFT / RIGHT

REMOVE EXISTING WATER METER TILE		
STATION	LOCATION	EA
STA. 0+18	RIGHT	1

INSTALL SIDEWALK RAMPS	
STATION	LOCATION
STA. 0+11	RIGHT 40.5'
STA. 0+14	RIGHT 7.5'
STA. 0+14	LEFT 7.5'

REMOVE EXISTING TELEPHONE POLE		
STATION	LOCATION	EA
STA. 1+73	RIGHT	1

MOUNTABLE CONCRETE CURB AND GUTTER (FACE OF CURB)		
STATION	LOCATION	LF
STA. 0+53 TO STA. 0+70	LEFT	89
STA. 2+44	LEFT	30
STA. 0+53 TO STA. 0+70	RIGHT	89

CONCRETE CURB AND GUTTER (FACE OF CURB)		
STATION	LOCATION	LF
STA. 0+06	LEFT	6
STA. 0+16 TO STA. 0+53	LEFT	36
STA. 0+70 TO STA. 2+44	LEFT	199
STA. 0+16 TO STA. 0+53	RIGHT	36
STA. 0+70 TO STA. 2+44	RIGHT	219
STA. 1+31 TO STA. 2+44	LEFT	138

STANDARD CONCRETE SIDEWALK		
STATION	LOCATION	SF
STA. 0+06 TO STA. 0+16	LEFT	381
STA. 0+06 TO STA. 0+16	RIGHT	345

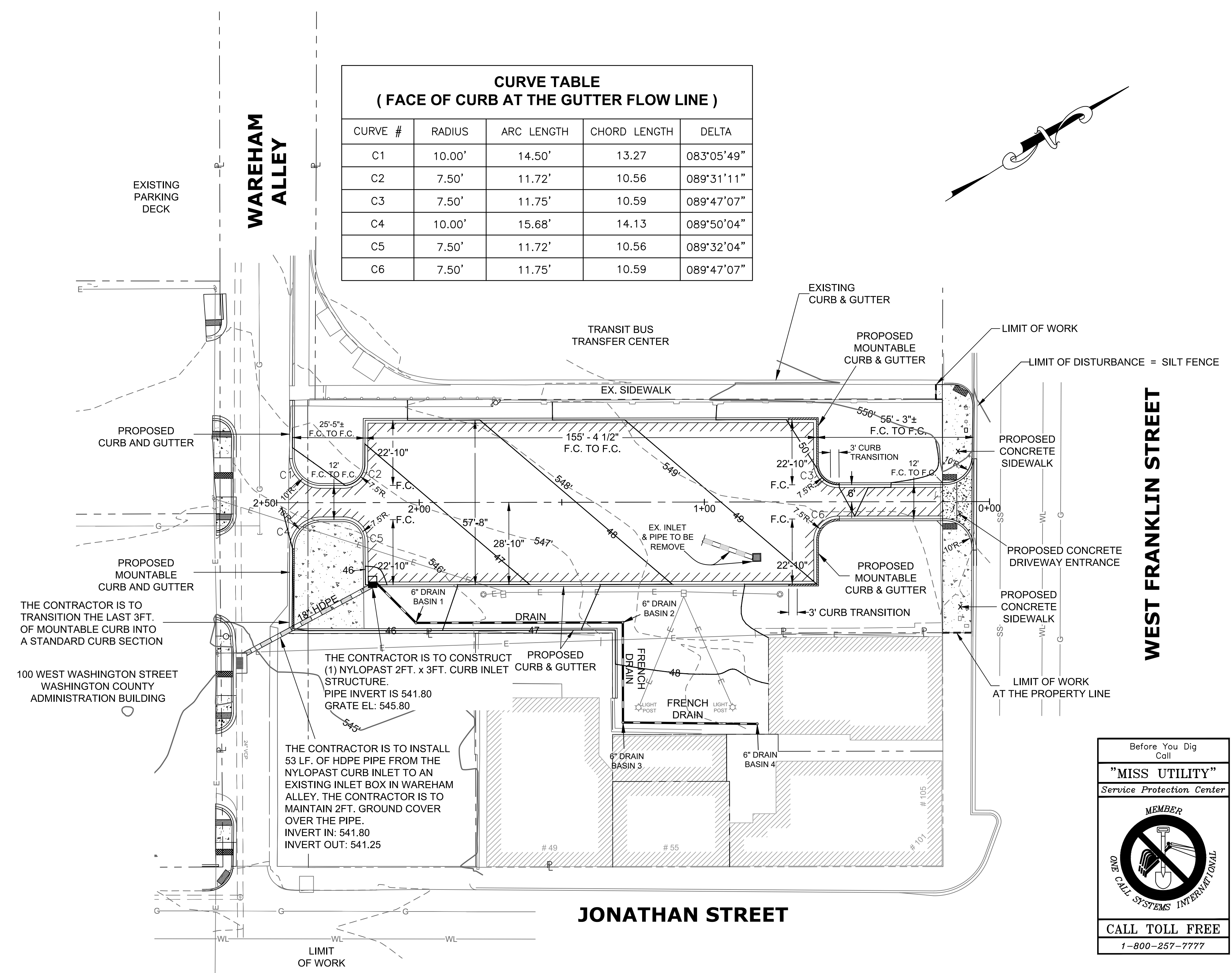
REMOVE EXISTING WR INLET		
STATION	LOCATION	EA
STA. 0+82	20' LEFT	1

REMOVE EXISTING STORM PIPE APPROXIMATE LOCATION IS SHOWN ON THIS DRAWING	
STATION	LF
STA. 0+82 LEFT TO STA. 2+36 RIGHT	162' ±

REINFORCED CONCRETE PAD		
STATION	LOCATION	SF
STA. 2+20 TO STA. 2+44	LEFT	852

FRENCH DRAIN AND DRAINS - SEE SHEET 11

CURVE TABLE (FACE OF CURB AT THE GUTTER FLOW LINE)				
CURVE #	RADIUS	ARC LENGTH	CHORD LENGTH	DELTA
C1	10.00'	14.50'	13.27	083°05'49"
C2	7.50'	11.72'	10.56	089°31'11"
C3	7.50'	11.75'	10.59	089°47'07"
C4	10.00'	15.68'	14.13	089°50'04"
C5	7.50'	11.72'	10.56	089°32'04"
C6	7.50'	11.75'	10.59	089°47'07"

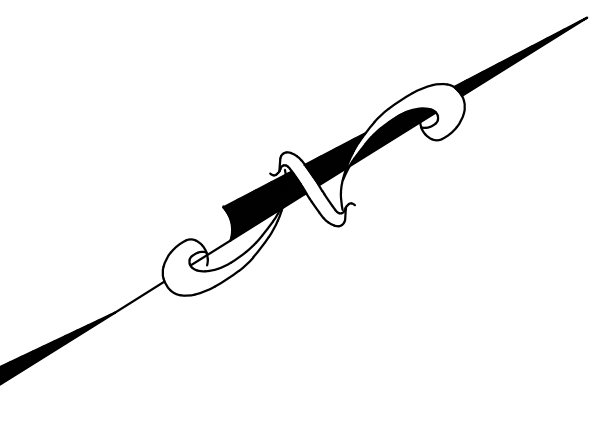


THE CONTRACTOR IS TO TRANSITION THE LAST 3FT. OF MOUNTABLE CURB INTO A STANDARD CURB SECTION

THE CONTRACTOR IS TO CONSTRUCT PROPOSED (1) NYLOPAST 2FT. x 3FT. CURB INLET STRUCTURE. PIPE INVERT IS 541.80 GRATE EL: 545.80

THE CONTRACTOR IS TO INSTALL 53 LF. OF HDPE PIPE FROM THE NYLOPAST CURB INLET TO AN EXISTING INLET BOX IN WAREHAM ALLEY. THE CONTRACTOR IS TO MAINTAIN 2FT. GROUND COVER OVER THE PIPE. INVERT IN: 541.80 INVERT OUT: 541.25

= FULL DEPTH PAVING REPAIR (SEE PARKING LOT PAVING DETAIL)

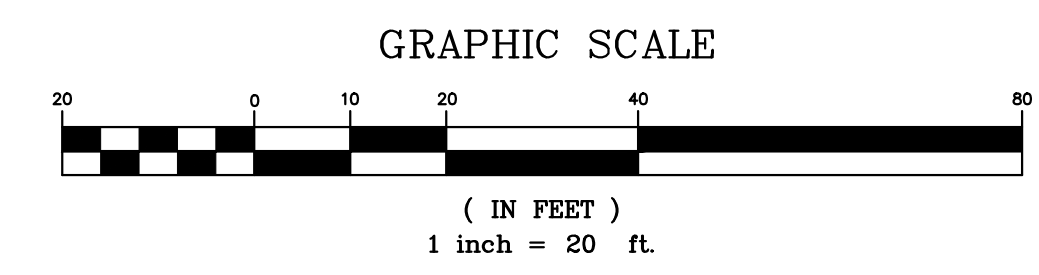


Before You Dig
Call
"MISS UTILITY"
Service Protection Center

MEMBER

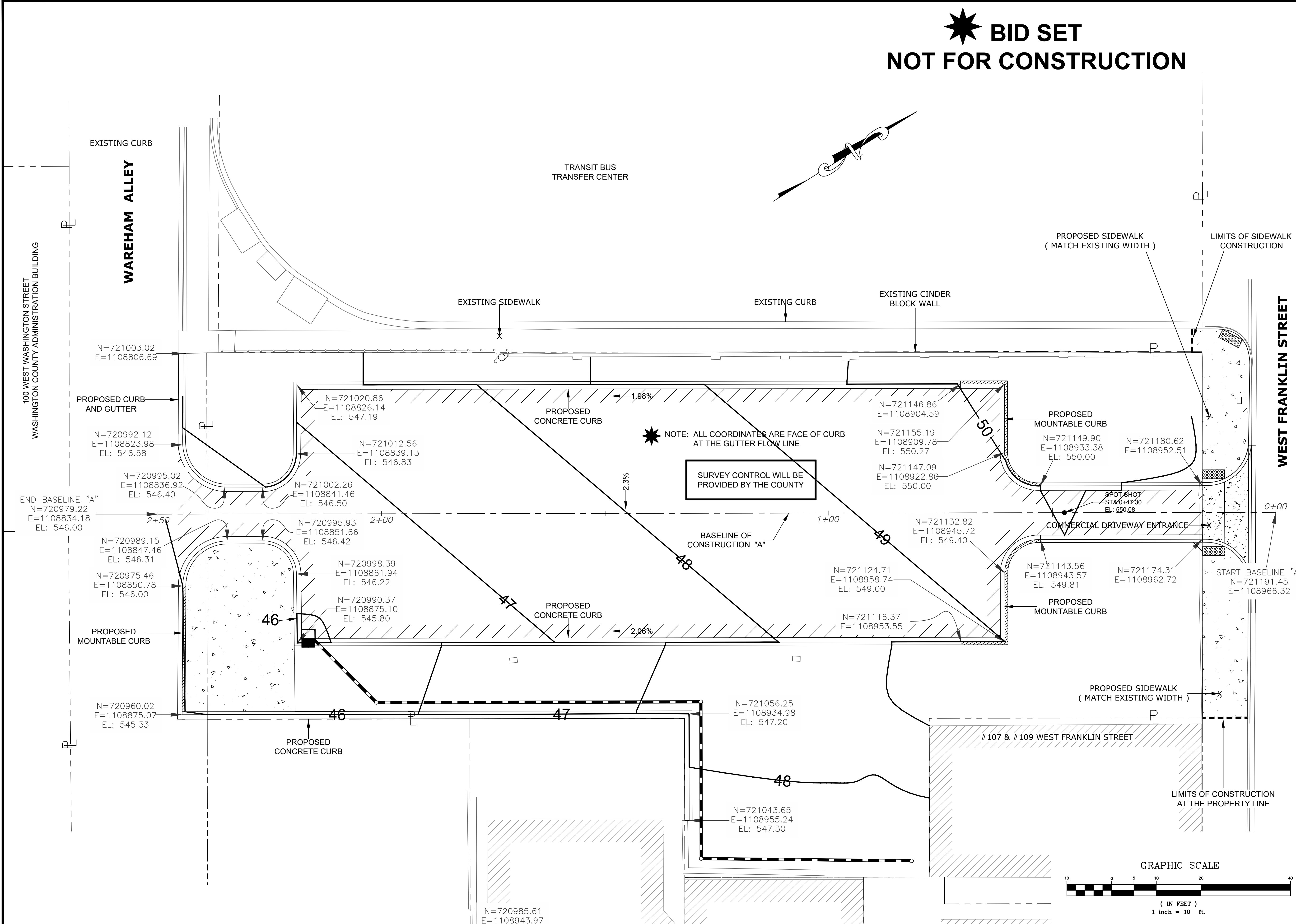
ONE CALL SYSTEMS INTERNATIONAL

CALL TOLL FREE
1-800-257-7777



NO.	REVISION DESCRIPTION	BY	DATE
DESIGNED BY:	JVR	DRAWN BY:	JVR/rlj
CHECKED BY:	JVR	DATE:	08-21-17
WASHINGTON COUNTY, MARYLAND DIVISION OF ENGINEERING			
Washington County Administration Annex. Building 80 W. Main Street, Hagerstown, MD 21740 Phone: 240-313-2460 Fax: 240-313-2401			
WASHINGTON COUNTY EMPLOYEE PARKING FACILITY			
SITE PLAN			
SCALE 1" = 20' SHEET NO. 01 OF 11 PROJECT NO. 28-241			

★ BID SET NOT FOR CONSTRUCTION



NO.	REVISION DESCRIPTION	BY	DATE

DESIGNED BY: JVR	DRAWN BY: JAVIJI	CHECKED BY: JVR	DATE: 08-21-17	
---------------------	---------------------	--------------------	-------------------	--

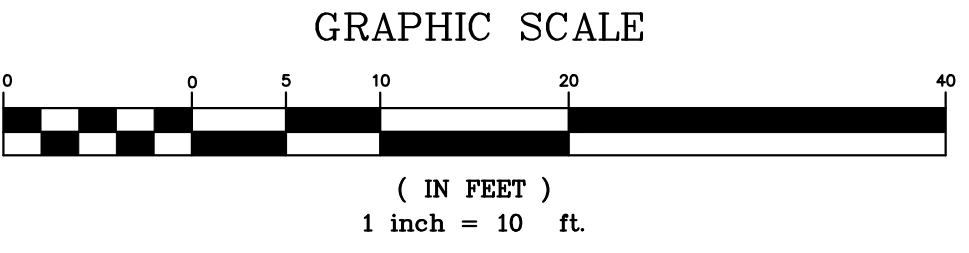
WASHINGTON COUNTY, MARYLAND
DIVISION OF ENGINEERING

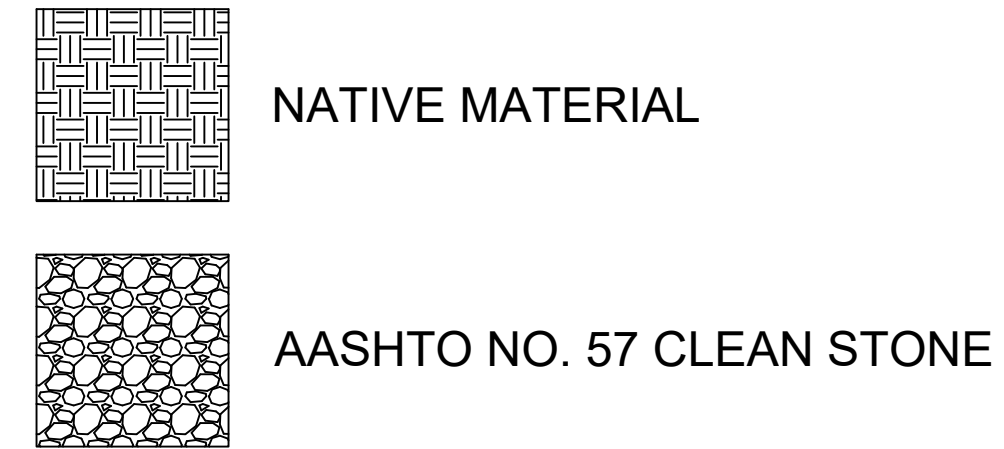
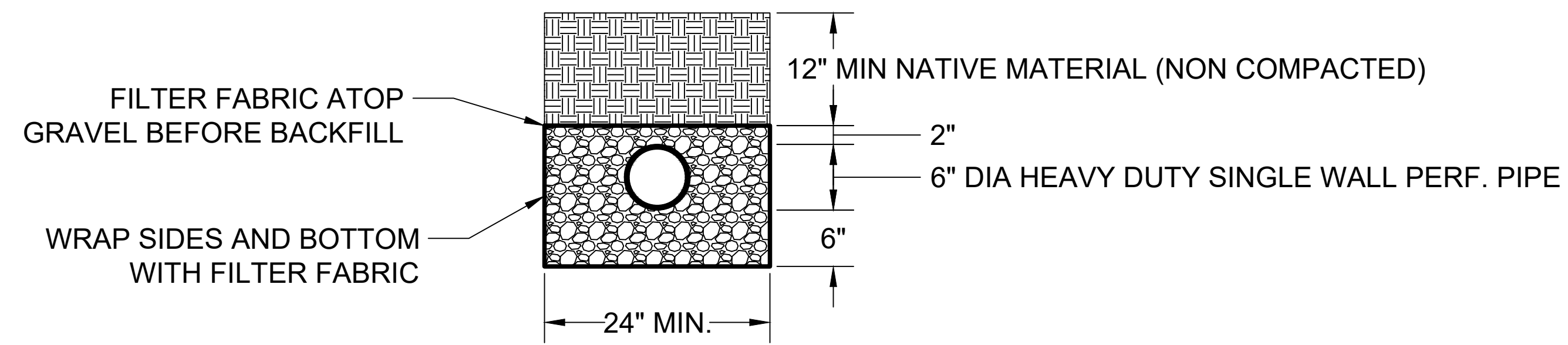
Washington County Administrative Annex, Building
80 W. Baltimore St., Hagerstown, MD 21740
Phone: 240-313-2460 Fax: 240-313-2401

COORDINATE PLAN

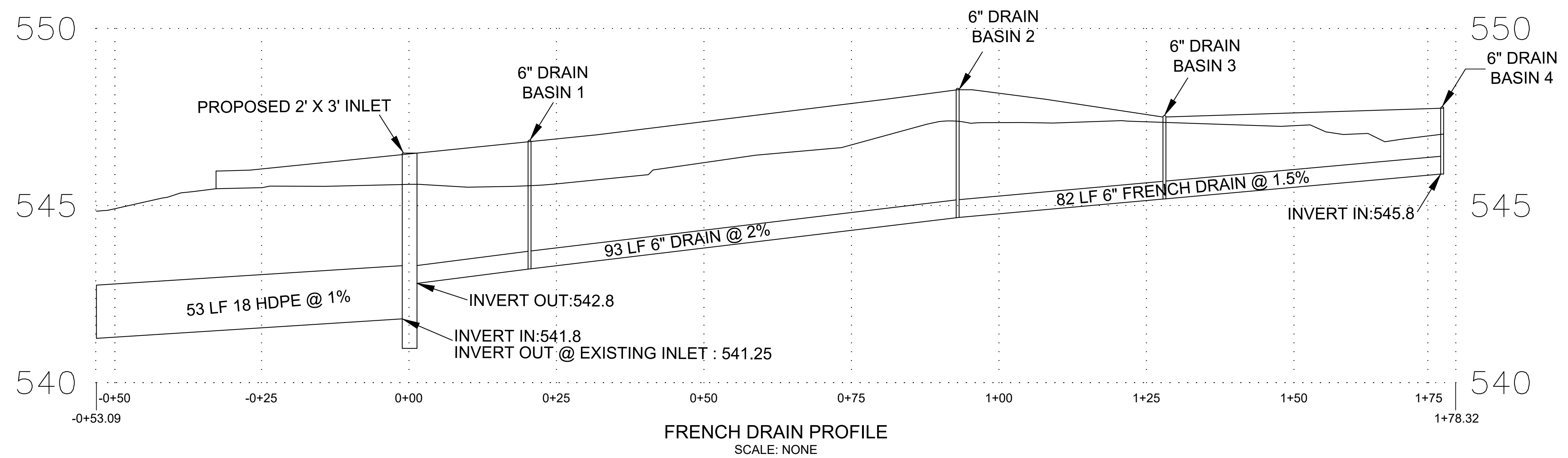
WASHINGTON COUNTY EMPLOYEE PARKING FACILITY

SCALE 1" = 10'
SHEET NO. 02 OF 11
PROJECT NO. 28-241





FRENCH DRAIN SECTION DETAIL
SCALE: 1" = 1'



FRENCH DRAIN PROFILE
SCALE: NONE

★ BID SET
NOT FOR CONSTRUCTION

DESIGNED BY:	JVR	DRAWN BY:	JVR	CHECKED BY:	JVR	DATE:	05-25-18
NO.		NO.		NO.		NO.	
REVISION DESCRIPTION		REVISION DESCRIPTION		REVISION DESCRIPTION		REVISION DESCRIPTION	
BY		BY		BY		BY	
DATE		DATE		DATE		DATE	

WASHINGTON COUNTY, MARYLAND
DIVISION OF ENGINEERING

Washington County Administrative Annex, Building
80 W. Baltimore St., Hagerstown, MD 21740
Phone: 240-313-2460 Fax: 240-313-2401

FRENCH DRAIN DETAILS
WASHINGTON COUNTY EMPLOYEE
PARKING FACILITY

SCALE	None
SHEET NO.	11 OF 11
PROJECT NO.	28-241