

Discover the process

FEMA Planning and Budgeting...

On a national level, FEMA identifies watersheds for potential project funding

Discovery Initiated...

- On a regional level, FEMA invites watershed stakeholders to contribute local and regional data and knowledge
- Discovery Meeting scheduled

Data Collection and Coordination...

- Local officials internally discuss existing and needed floodplain projects
- Communities and regional organizations contribute data for the Discovery Map

Discovery Meeting...

- Watershed-wide stakeholders present working knowledge of flood risk to FEMA representatives
- Discovery Map, showing statistical flood risk data and contributed data, is discussed
- High flood risk areas and mapping needs are identified

Final Project Selection...

FEMA selects from Discovery projects a few watershed projects for current fiscal year funding

RELATED FEMA PROGRAMS
National Flood Insurance Program
Flood Mitigation Assistance Program
National Dam Safety Program
Pre-Disaster Mitigation Program
Repetitive Flood Claims Program
Severe Repetitive Loss Program
Community Rating System

DOCUMENTS TO REVIEW

Mitigation Plans
Letters of Map Amendment
Letters of Map Revision
Levee Certification Documentation
Flood Studies
Comprehensive Plans
Business Case Plans

ISSUES TO DISCUSS LOCALLY

Communications Strategy
Flood Risk Education Program
Flood-Related Issues and Map Needs
Available Topographic Data
Cost-Share Potential
Current Risk Reduction Strategy
Ongoing or Needed Mitigation Actions

Contact your
FEMA Regional Office
for details

www.fema.gov/plan/prevent/fhm/rm_main.shtm

1-877-FEMA MAP

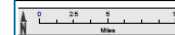
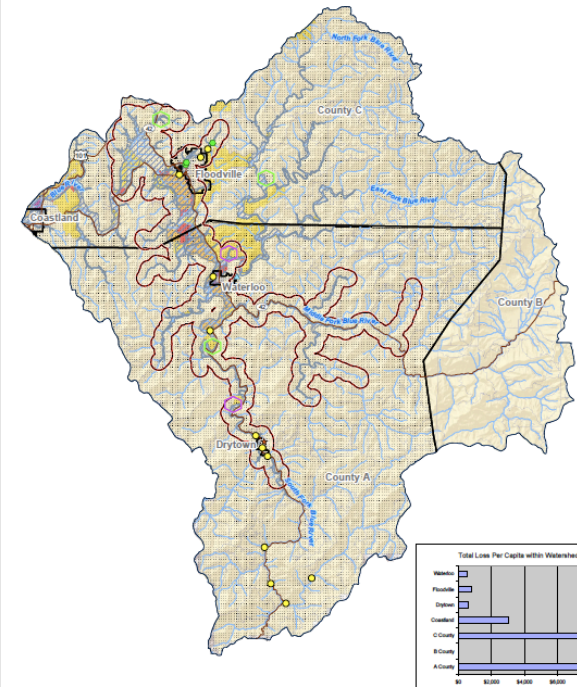


RiskMAP
Increasing Resilience Together



DISCOVERY

Watershed Discovery Map: Watershed USA



THE INFORMATION DEPICTED ON THIS MAP IS ALSO AVAILABLE IN DIGITAL GIS FORMAT AT: [HTTP://MSC.FEMA.GOV](http://MSC.FEMA.GOV)



RiskMAP
Increasing Resilience Together

Discover project partners

- Community and Tribal officials, including leaders, floodplain administrators, planners, emergency managers, GIS specialists
- Federal, State, and regional, non-profit organizations involved with flooding or land use
- Other locally-identified stakeholders

Discover flood risk

- Review CAVs, mitigation and comprehensive plans, identify LOMA clusters
- Consider the local and watershed vision for reducing flood risk
- Document known areas of flooding and locate available study data
- Contribute to the Discovery Meeting

Discover ways to protect your community

- Using new tools and training to communicate risk clearly
- Through mitigation projects, flood studies and maps
- Through coordination with watershed organizations and other local communities

FEMA's new Risk Mapping, Assessment, and Planning (Risk MAP) program provides communities with flood information and tools that can be used to enhance mitigation plans and better protect citizens. Through more accurate flood maps including Digital Flood Insurance Rate Maps (DFIRMs), risk assessment tools, and outreach support, Risk MAP strengthens local ability to make informed decisions about reducing risk.

Discovery is ... the process of data mining, collection, and analysis with the goal of initiating a flood risk or mitigation project or risk discussions within a watershed

Discovery initiates open lines of communication and relies on local involvement for productive discussions about flood risk. It provides a forum for a watershed-wide effort to understand how your community's flood risk is related to flood risk throughout the watershed. In Risk MAP, DFIRMs will be developed on a watershed basis, so Discovery Meetings will involve stakeholders from throughout your watershed on local, regional, State, and Federal levels.

Discovery is cooperative. Communities know their watershed and flood risks... and local knowledge of flooding and mitigation projects is essential to identifying needed projects and mapping. FEMA will bring statistical data, but local officials and regional organizations will be relied on to provide the working knowledge of local flooding.

Discovery is data. Locally and regionally developed data is important! Locally-contributed data will be combined with risk statistics on a Discovery Map to stimulate holistic discussions about watershed-wide flood risk, mapping needs, and mitigation actions. There is no limit to the types and formats of data and information, so while some data types are listed on the sidebar, contact your FEMA Regional Office with ideas about relevant data that you can contribute.

Discovery Meeting discussions will focus on identifying flood risk and the location of study needs for a potential project. Supporting conversations will cover project requirements and flexibility, data and cost-share, communications and outreach, current and potential actions to reduce flood risk. The meeting is not just all flood hazards and mapping needs, it includes mitigation plans and projects, community changes and local issues that need FEMA support.

Following Discovery, FEMA will select watershed projects for funding.

Discovery is a call to action. Join FEMA in reducing flood risk for your community through education, awareness, contribution and cooperation.

Discover the data

- Geospatial data (GIS) whenever possible!
- Boundary, hydrography, and transportation layers
- Elevation data with 2' contours or better
- Historical flooding and disaster data
- Flood study needs
- Mitigation activities and other grant projects ongoing or planned
- Local development and floodplain management plans
- Regional watershed plans
- Infrastructure information, especially for levees and new bridges, dams, culverts, and road improvements
- Building footprints or parcel data
- Current flood risk communication process

Customize Discovery: Send your community's data to your FEMA Regional Office now!

