



# Market trends



## Common business challenges

## Cyber as a catalyst to empower your organization

### C-SUITE



Regulatory adherence and compliance



Business agility, customer experience, and trust



1

Software Development Life Cycle (SDLC), DevSecOps, tools, and governance

2

Secure digital transformation, secure solutions, and better user experience

### VPS/DIRECTORS/MANAGER



Transformation and operating advancement



Technology shift, modernization, and cost



3

Adoption of new technologies and next-gen cyber products

4

Next-gen cyber transformation of people, process, technology, and automation

### ANALYST/ENGINEER



Shortage of skilled resources



Lack of industry and business case knowledge and exposure



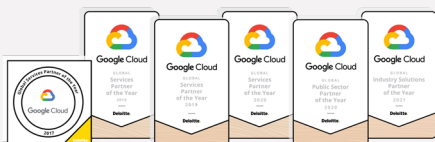
5

Upskilling and technology adoption, Infrastructure as Code (IaC), Policy as Code and automation for cybersecurity

6

Cyber standard operating procedures, playbooks, templates  
Use of artificial intelligence, machine learning, user and entity behavior analytics, and advanced toolsets

## Why Deloitte & Google Cloud



Four-time Global Services Partner of the Year (2017, 2018, 2019, 2020)

Industry Partner of the Year (2021)

Inaugural Public Sector Partner of the Year (2020)



1,700+

**GOOGLE CLOUD CERTIFIED PROFESSIONALS**  
including architects, security engineers, and developers



**PREMIER PARTNER STATUS**  
**SECURITY SPECIALIZATION**  
GOOGLE CLOUD

# Spotlight: Deloitte engagements



**CLIENT:**  
MAJOR BANK

**Background:**

Deloitte is assisting a major bank in building a secure and resilient Google Cloud environment for migrations over a multi-year period.

**Solution:**

Secure Cloud Foundations and compliance automation developed to accelerate application migration and deployment into Google Cloud.

**Impact/Outcome:**

Secure and resilient network structure that enables minimal latency and maximum security. Securely migrating over 700 applications to Google Cloud enabling the bank to exit the data center.



**CLIENT:**  
MAJOR HEALTHCARE ORGANIZATION

**Background:**

Client was looking to migrate their existing security threat management platform to something more scalable and cloud native capable of monitoring their on-prem and multi-cloud environments. Their requirements also included centralized security log management, advanced security analytics and a flat fee structure to avoid increased storage or processing costs as their environment grew.

**Solution:**

Deloitte implemented PACE and developed custom sets of analytics and persona-based visualizations for the SOC team to enable threat detection and hunt at scale, and bespoke analytics for the insider threat team.

**Outcome:**

Improved detection capabilities using predictive analytics to proactively detect threats. Cost reduction and efficiency improvements realized with Chronicle's ingestion capabilities and extensible rulesets.



**CLIENT:**  
GLOBAL INVESTMENT BANK

**Background:**

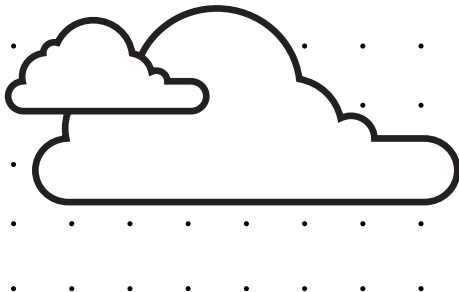
Client was looking to mature their cloud security as they build foundational capabilities for development of new products and market offerings in the cloud at scale.

**Solution:**

Deloitte developed and automated security guidelines for use of Google Cloud services. Assisted with cloud security design reviews and developed threat models in conjunction with client tech risk personnel. Developed Open Policy Agent (OPA) policies to help enforce Policy-as-Code (PaC) for Google Cloud's Kubernetes Config Connector (KCC) based IaC deployments across the clients Google Cloud environment and implement into development process with Continuous Integration, Continuous Delivery (CI/CD) pipelines.

**Outcome:**

Ability to shift left in cloud development with automated preventative guardrails confirming Google Cloud resource configuration even before deployment.



## Start the conversation



**Arun Perinkolam**  
Principal  
Deloitte & Touche LLP  
aperinkolam@deloitte.com



**Soumendra Rath**  
Managing Director  
Deloitte & Touche LLP  
sorath@deloitte.com



**Chris Trollo**  
Senior Manager  
Deloitte Services LP  
ctrollo@deloitte.com



**Ryan Lee**  
Alliance Manager  
Deloitte Services LP  
ryanlee8@deloitte.com

This publication contains general information only and Deloitte is not, by means of this publication, rendering accounting, business, financial, investment, legal, tax, or other professional advice or services. This publication is not a substitute for such professional advice or services, nor should it be used as a basis for any decision or action that may affect your business. Before making any decision or taking any action that may affect your business, you should consult a qualified professional advisor. Deloitte shall not be responsible for any loss sustained by any person who relies on this publication.

All product names mentioned in this document are the trademarks or registered trademarks of their respective owners and are mentioned for identification purposes only. Deloitte & Touche LLP is not responsible for the functionality or technology related to the vendor or other systems or technologies as defined in this document.

As used in this document, "Deloitte" means Deloitte & Touche LLP, a subsidiary of Deloitte LLP. Please see <http://www.deloitte.com/us/about> for a detailed description of our legal structure. Certain services may not be available to attest clients under the rules and regulations of public accounting.

Copyright © 2022 Deloitte Development LLC. All rights reserved.