

# THE TRAIL: SITES EXPLORING THE ATCHAFALAYA'S WATER STORY

## REGION A: LAND AT POWERFUL RIVERS

- a1 **Mississippi River** @ Vidalia Riverwalk | **V-1**
- a2 **Red River** @ Lock & Dam 1 | **U-2**
- a3 **\*Spring Bayou** @ Spring Bayou WMA | **U-3**
- a4 **Bayou des Glaises** @ Sarto Old Iron Bridge | **U-3**
- a5 **Old River** @ Old River Control Complex | **V-3**
- a6 **\*Three Rivers Confluence** @ Richard Yancey WMA | **V-3**
- a7 **Old River** @ Lock & Dam | **V-3**
- a8 **Mississippi River** @ Morganza Floodway | **V-4**
- a9 **Mississippi River** @ New Roads Old Ferry Landing | **V-4**
- a10 **False River** @ Pointe Coupée Parish Museum | **V-5**

## REGION B: TERRACES ON THE MISSISSIPPI

- b1 **Comite River** @ Blackwater Conservation Area | **W-5**
- b2 **Mississippi River** @ Scott's Bluff | **W-5**
- b3 **Mississippi River** @ Port Allen Old Ferry Landing | **W-5**
- b4 **Gulf Intracoastal Waterway** @ Hwy. 1 Intracoastal Boat Launch | **W-5**
- b5 **Baton Rouge Lakes** @ City Park Lake | **W-5**
- b6 **Bluebonnet Swamp** @ Bluebonnet Swamp Nature Center | **W-5**
- b7 **Bayou Fountain** @ Highland Road Community Park | **W-5**
- b8 **Bayou Plaquemine** @ Plaquemine Lock State Historic Site | **W-6**
- b9 **Bayou Plaquemine** @ Bayou Road | **W-6**
- b10 **Gulf Intracoastal Waterway** @ Jack Miller Landing | **W-6**
- b11 **Bayou Lafourche** @ Mississippi River Junction | **X-6**

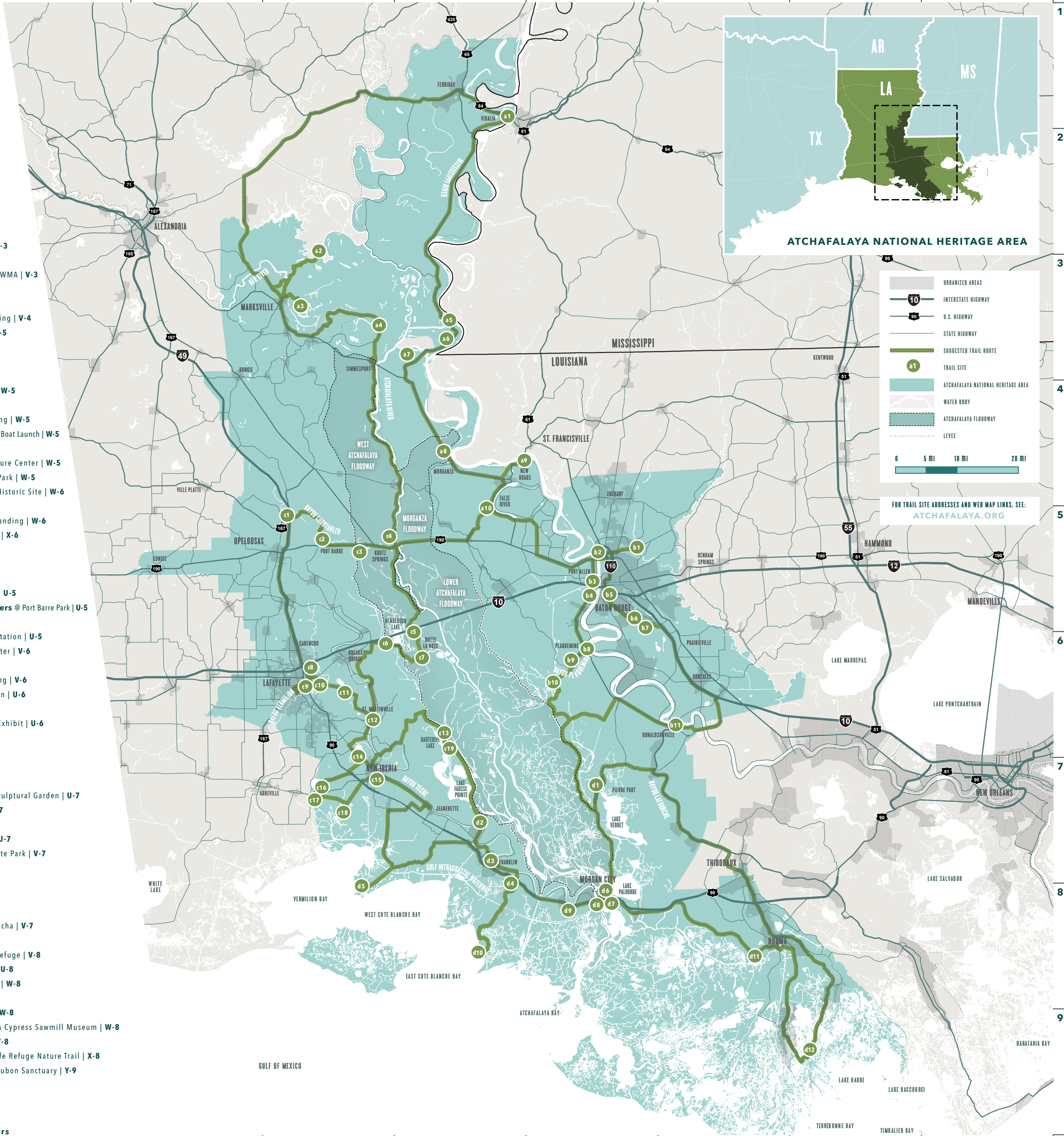
## REGION C: RIVER RIDGES TO BAYOU BANKS

- c1 **Bayou Courtableau** @ Steamboat Turnaround | **U-5**
- c2 **Bayou Courtableau** @ Bayou Teche Headwaters @ Port Barre Park | **U-5**
- c3 **Atchafalaya Floodway** @ Indian Bayou | **U-5**
- c4 **\*Atchafalaya River** @ Teche-Vermilion Pump Station | **U-5**
- c5 **Atchafalaya River** @ Atchafalaya Welcome Center | **V-6**
- c6 **Atchafalaya Floodway** @ Henderson | **U-6**
- c7 **Atchafalaya River** @ Butte La Rose Boat Landing | **V-6**
- c8 **François Coulee** @ Acadiana Park Nature Station | **U-6**
- c9 **Vermilion River** @ Rotary Point | **U-6**
- c10 **\*Vermilion River** @ Vermilionville Watershed Exhibit | **U-6**
- c11 **Lake Martin** @ Cypress Island Preserve | **U-6**
- c12 **Bayou Teche** @ Magnolia Park | **U-6**
- c13 **Lake Dauterive** @ 1,000-Year-Old Cypress | **V-6**
- c14 **Spanish Lake** @ Old Spanish Trail | **U-6**
- c15 **Bayou Teche** @ PJ Allain Waterfront Park and Sculptural Garden | **U-7**
- c16 **\*Lake Peigneur** @ Rip Van Winkle Gardens | **U-7**
- c17 **Bayou Carlin Cove** @ Port of Delcambre | **U-7**
- c18 **Avery Island Salt Dome** @ Jungle Gardens | **U-7**
- c19 **\*Lake Fausse Pointe** @ Lake Fausse Pointe State Park | **V-7**

## REGION D: GROWTH TO THE GULF

- d1 **Pierre Part Bay** @ Virgin Island Bridge | **W-7**
- d2 **Bayou Teche** @ Sovereign Nation of the Chitimacha | **V-7**
- d3 **Bayou Teche** @ Franklin Historic District | **V-7**
- d4 **Bayou Teche** @ Bayou Teche National Wildlife Refuge | **V-8**
- d5 **\*Vermilion Bay** @ Cypermort Point State Park | **U-8**
- d6 **Lake Palourde** @ Victor Guarisco Lake End Park | **W-8**
- d7 **Atchafalaya River** @ Mr. Charlie Oil Rig | **W-8**
- d8 **Atchafalaya River** @ Morgan City Great Wall | **W-8**
- d9 **Cypress Swamps** @ Wedell-Williams Aviation & Cypress Sawmill Museum | **W-8**
- d10 **East Cote Blanche Bay** @ Burns Point Park | **V-8**
- d11 **Terrebonne Basin** @ Mandalay National Wildlife Refuge Nature Trail | **X-8**
- d12 **Bayou Petit Caillou** @ Marguerite Moffett Audubon Sanctuary | **Y-9**

\*Sites that may have fees or limited hours



U V W X Y Z



LEARN MORE ABOUT THE TRAIL

# Coming Atcha

## Atchafalaya

### WATER HERITAGE TRAIL

The **Atchafalaya Water Heritage Trail** is a self-guided driving trail that explores the 14-parish Atchafalaya National Heritage Area, guiding visitors to more than 50 sites to illustrate how water has become the distinctive influence on life here. Through the ages it has created ever-changing geography, shaped local culture, contributed to subtle and catastrophic events and endured a long history of human manipulation. Today a vast network of bayous, rivers, backwater lakes, marshes and the Atchafalaya Basin—America's largest river swamp—set the stage for complex water control technology necessary for survival. This story is one of man and nature in an often foreboding but always majestic environment centered on a river we call the Atchafalaya.

Use this brochure, along with our website, to explore this driving trail. Many of the sites listed also serve as starting points to enjoy a wide range of outdoor activities, including paddling, birding and hiking.

Atchafalaya.org



YOUR NEXT ADVENTURE

Coming Atcha

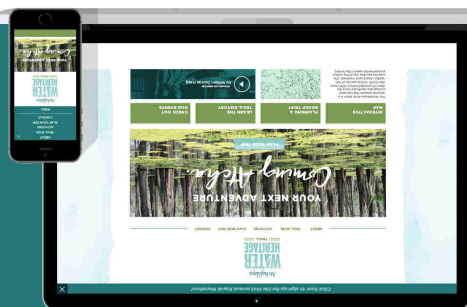
The **Atchafalaya National Heritage Area** is a National Park Service program under the Louisiana Department of Culture, Recreation and Tourism. This vast area is one of the most culturally and ecologically varied regions in the United States. National Heritage Areas are recognized by Congress for their important natural resources, history and ways of life.



©2017 Atchafalaya National Heritage Area All rights reserved.

Atchafalaya.org

VISIT OUR WEBSITE FOR MORE INFORMATION:



"The Atchafalaya National Heritage Area's Water Heritage Trail traces the culture and history of the people who have lived near and depended upon the Atchafalaya River for millennia. The Atchafalaya's flowing waters are used to trace the story of the people, places, and events that have shaped one of the most unique areas in the United States. Its story comes to life for visitors who can drive, walk, and paddle to the 52 informational kiosks strategically placed in the 14 parishes that make up the Atchafalaya National Heritage Area. From the Atchafalaya's source in Concordia Parish, to the shores of St. Mary, Iberia, and Terrebonne Parishes—and all points in between—come and be a part of the Long River's Journey and find yourself in America's Foreign Country today."

Lieutenant Governor



Bring your bike, fishing pole, tent or boat as you explore the Atchafalaya Water Heritage Trail. The community of Cocodrie, in the southern-most section of this trail, is a popular fishing destination, and many trail sites offer additional outdoor recreation opportunities. For sites located within a park or refuge, check recreation rules and regulations when planning your visit.

#### AND MORE

Get a close-up view of the massive infrastructure that attempts to control water's impact on the landscape and settlement patterns of south and central Louisiana. The Morganza Control Structure is just one part of a regional system built to regulate water flowing through the Mississippi River Basin on its unending quest to reach the Gulf of Mexico.

#### CONTROLLING WATER

One of the best ways to experience the Atchafalaya Water Heritage Trail is to paddle the waters that have shaped it. Explore a portion of the 13.5-mile Bayou Teche Paddle Trail Corridor, which travels through four parishes and was designated a National Water Trail in 2015. Take a scenic tour of Spring Bayou, or glide along Belle River's relic *sikidder canals* cleared a century ago to pull cypress trees from the swamp.

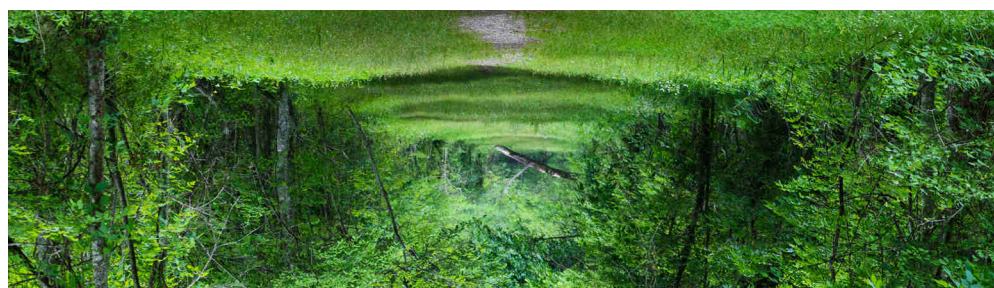
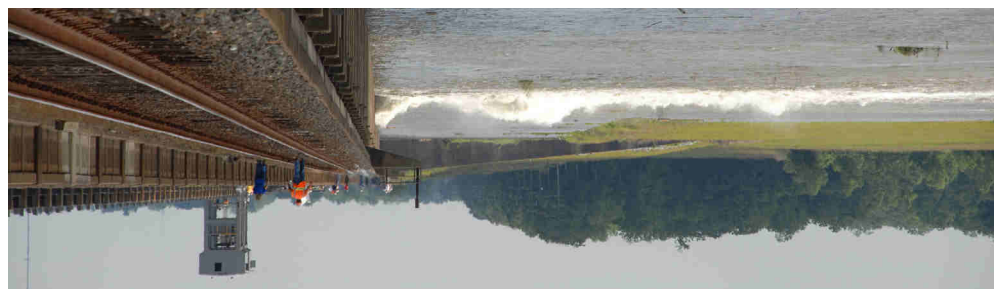
#### PADDLING

The Atchafalaya River Basin provides habitats for more than 250 species of birds, including herons, egrets, spoonbills, ducks and geese. Nesting bald eagles (*Haliaeetus leucocephalus*) are routinely visible along the Mississippi River and at several trail sites throughout the region.

#### BIRDING

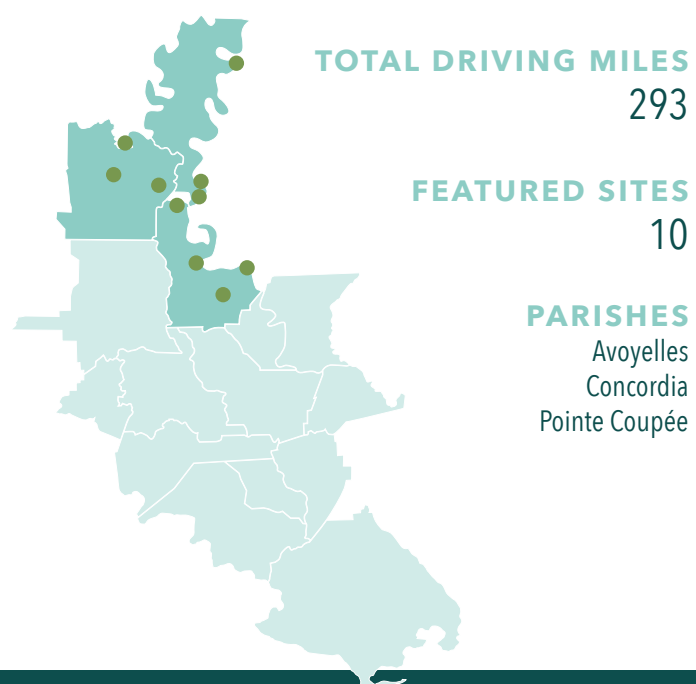
Walk along trails, boardwalks, bridges and parks to explore nature in what we like to call "America's not nesting—and offers visitors incredible wildlife viewing opportunities."

#### HIKING



## UPPER ATCHAFALAYA LAND AT POWERFUL RIVERS

The rivers that shaped this area began interacting thousands of years ago, creating intricate landforms representative of a dynamic environment. During the last 300 years, the impact of settlement and development along waterways from here to the Gulf prompted construction of engineering marvels. These structures help minimize the risk that seasonal flooding will change the Mississippi River's course to that of the Atchafalaya River. For sites in this area, see map Region A on reverse side.



#### VISITOR INFO:

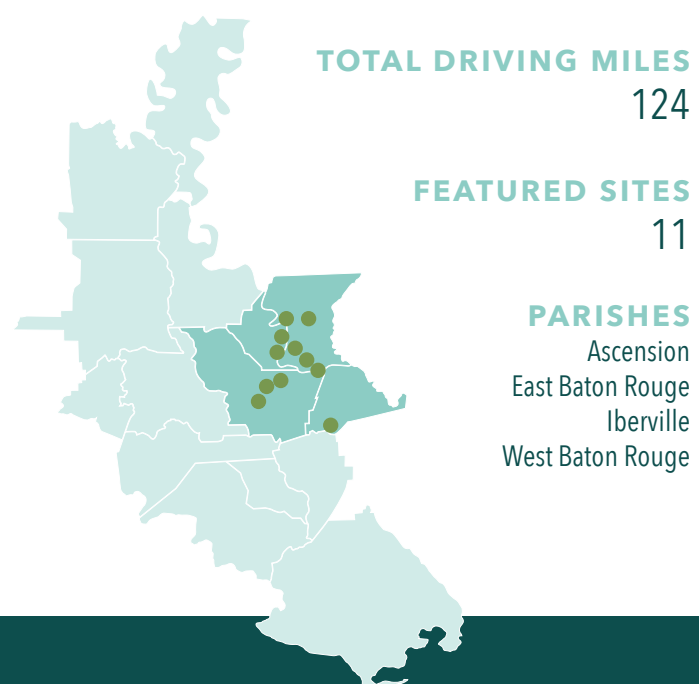
**VIDALIA - FERRIDAY AREA**  
http://www.cityofvidalia.com  
US 84 Welcome Center in Vidalia | 318-336-7008

**MARKSVILLE - MANSURA - BUNKIE AREA**  
http://www.travelavoyelles.com | 318-253-0585 | 800-833-4195

**NEW ROADS - MORGANZA - JARREAU AREA**  
http://www.pctourism.org | 225-638-3998

## BETWEEN TWO RIVERS TERRACES ON THE MISSISSIPPI

This area is made up of features of Pleistocene terraces—the eroded remnants of ice age floodplains—and the modern Mississippi River valley. From prehistory to modern times, major settlements developed on the river's high, natural, west bank levees and the even higher terraces on the east bank. The Mississippi is a major economic force here. The region depends greatly on water control structures further north to preserve the current course of the river's massive flow. For sites in this area, see map Region B on reverse side.



#### VISITOR INFO:

**BATON ROUGE AREA**  
http://www.visitbatonrouge.com | 800-527-6843 | 225-383-1825

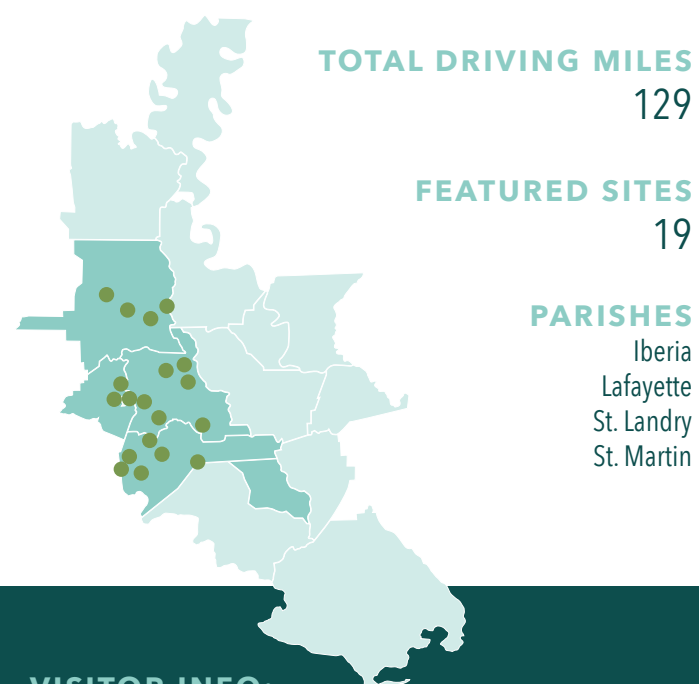
**DONALDSONVILLE - SORRENTO - GONZALES AREA**  
http://www.ascensiontourism.com | 888-775-7990

**PORT ALLEN AREA**  
http://www.westbatonrouge.net | 800-654-9701 | 225-344-2920

**PLAQUEMINE - WHITE CASTLE - GROSSE TETE - BAYOU SORRELL AREA**  
http://www.visitiberville.com | 877-310-8874

## BAYOU TECHE CORRIDOR RIVER RIDGES TO BAYOU BANKS

Central to this region is Bayou Teche, a long, slow-moving waterway that was once the primary course of the Mississippi River. Steeped in history, the Teche has many stories to tell. The bayou has served as home for American Indian tribes and ushered in the arrival of the first Acadians to the region. It played an important role in early transportation and trade and saw a major Civil War campaign fought along its banks. For sites in this area, see map Region C on reverse side.



#### VISITOR INFO:

**OPELOUSAS - WASHINGTON - EUNICE AREA**  
http://www.cajuntravel.com | 877-948-8004

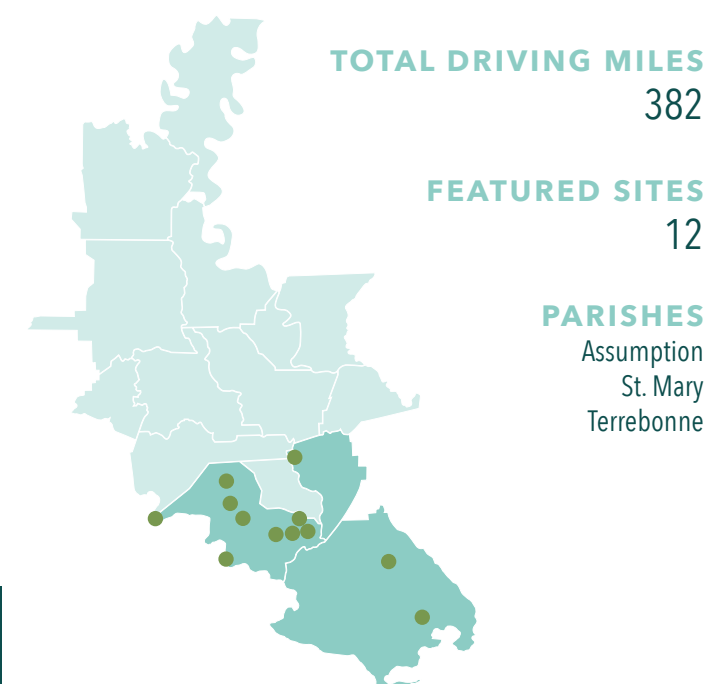
**BREAUX BRIDGE - HENDERSON - ST. MARTINVILLE AREA**  
http://www.cajuncountry.org | 888-565-5939  
I-10 Atchafalaya Welcome Center | 337-228-1094

**LAFAYETTE - SCOTT - DUSON AREA**  
http://www.lafayettettravel.com | 800-346-1958 | 337-232-3737

**NEW IBERIA - AVERY ISLAND - JEAMERETTE AREA**  
http://www.iberiatravel.com | 888-942-3742 | 337-365-1540

## COASTAL ZONE GROWTH TO THE GULF

Wetland habitat loss occurs at high rates in this region's coastal swamps and marshlands due to processes such as erosion, lack of sedimentation and subsidence. Development has also greatly affected the wetlands here, calling for a delicate (but difficult to achieve) balance between protecting populations and preserving this vital landscape. The Atchafalaya and Wax Lake deltas, unique examples of natural land building here, serve as models for the preservation and restoration of the rest of the coast. For sites in this area, see map Region D on reverse side.



#### VISITOR INFO:

**NAPOLEONVILLE - PIERRE PART AREA**  
http://www.assumptionla.com/Tourism | 985-369-7435

**MORGAN CITY - PATTERSON - FRANKLIN - CHARENTON AREA**  
http://www.cajuncoast.com | 800-256-2931 | 985-380-8224

**HOUMA - CHAUVIN - DULAC - COCODRIE AREA**  
http://www.houmatravel.com | 800-688-2732 | 985-868-2732