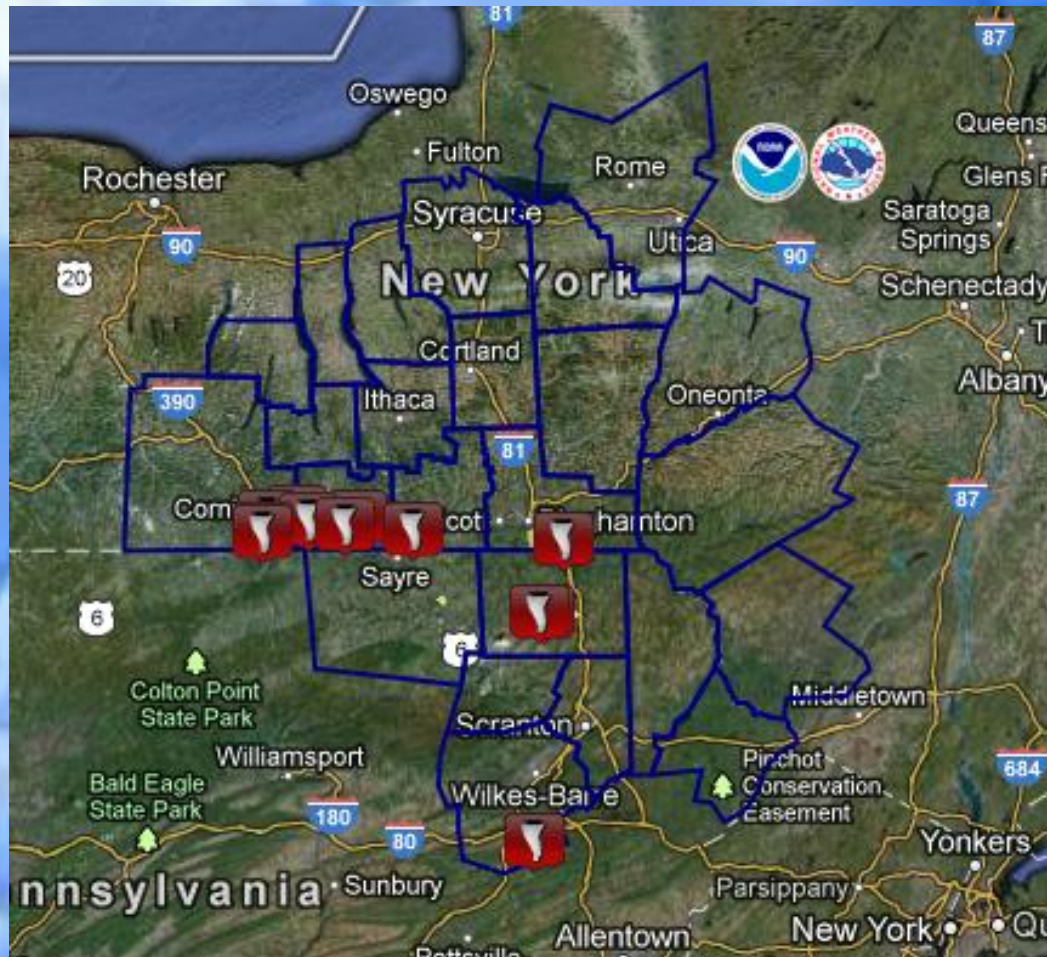
A large, white, fluffy cumulus cloud against a clear blue sky. The cloud is the central focus, with a soft, billowy texture. The sky is a vibrant, clear blue, providing a high-contrast background for the white cloud. The lighting is bright, suggesting a sunny day.

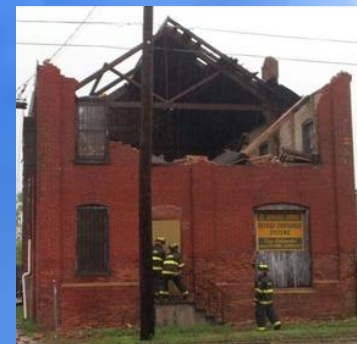
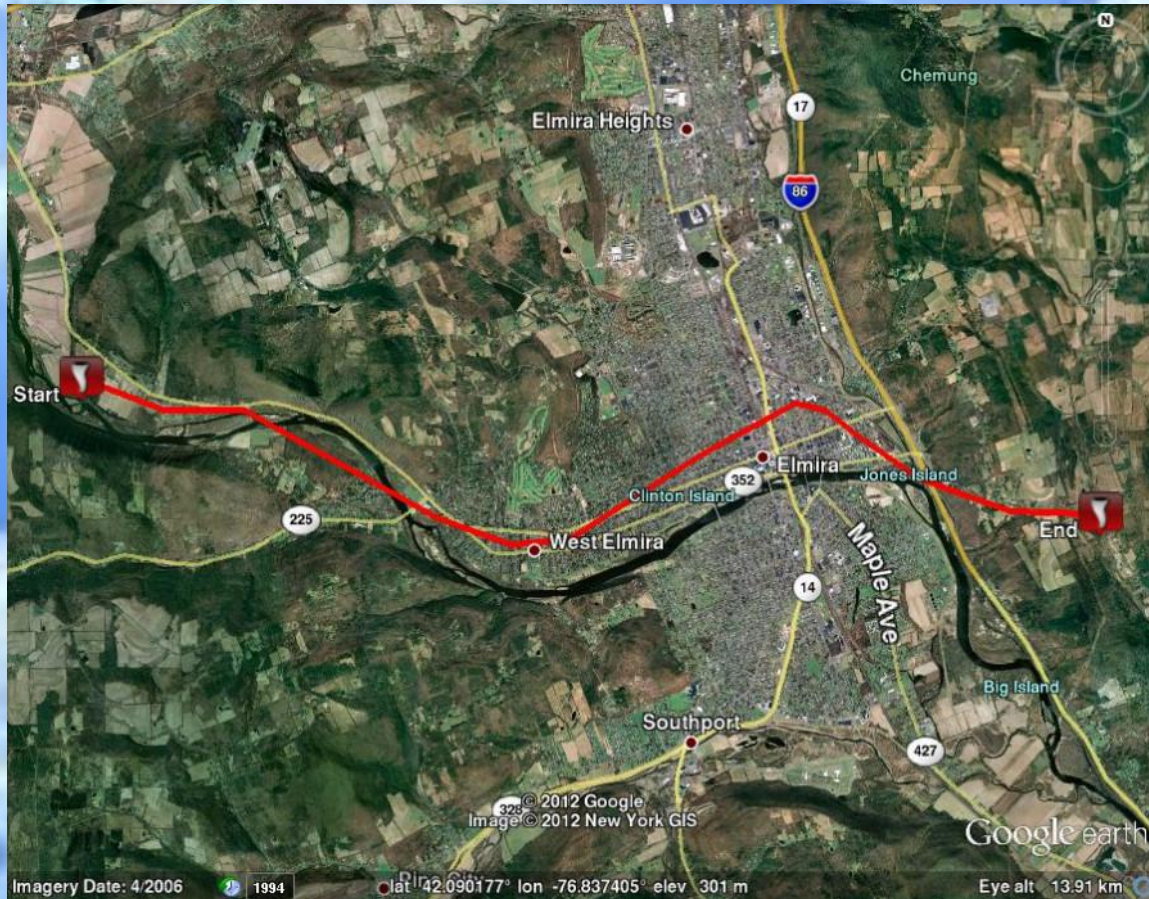
July 26, 2012

Twin tier tornado event

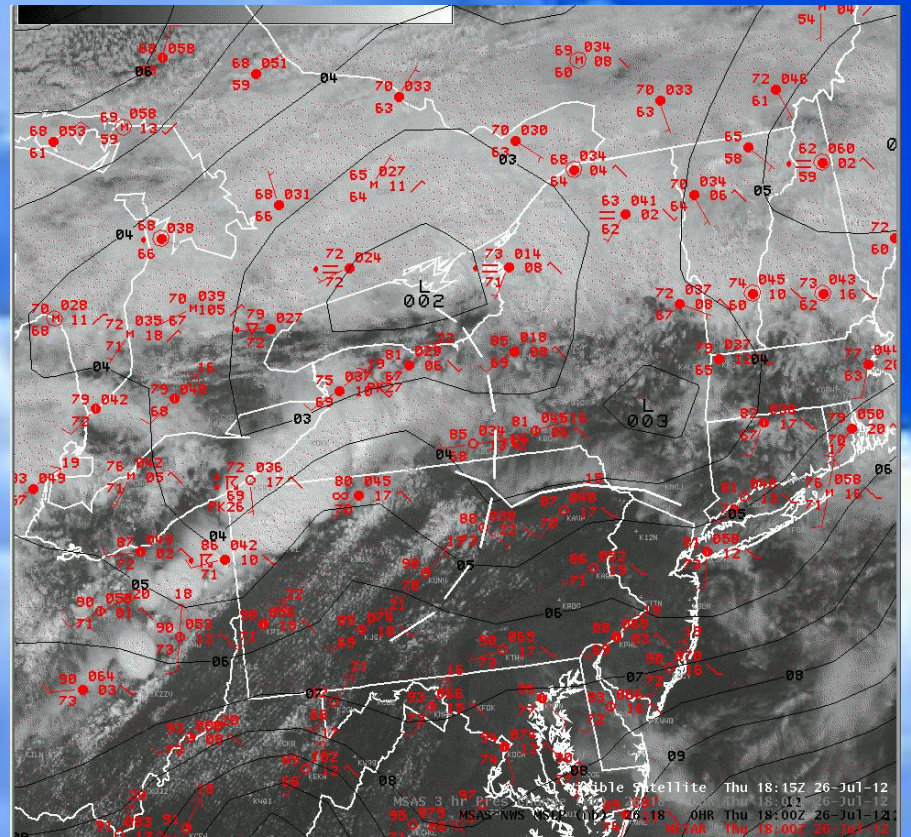
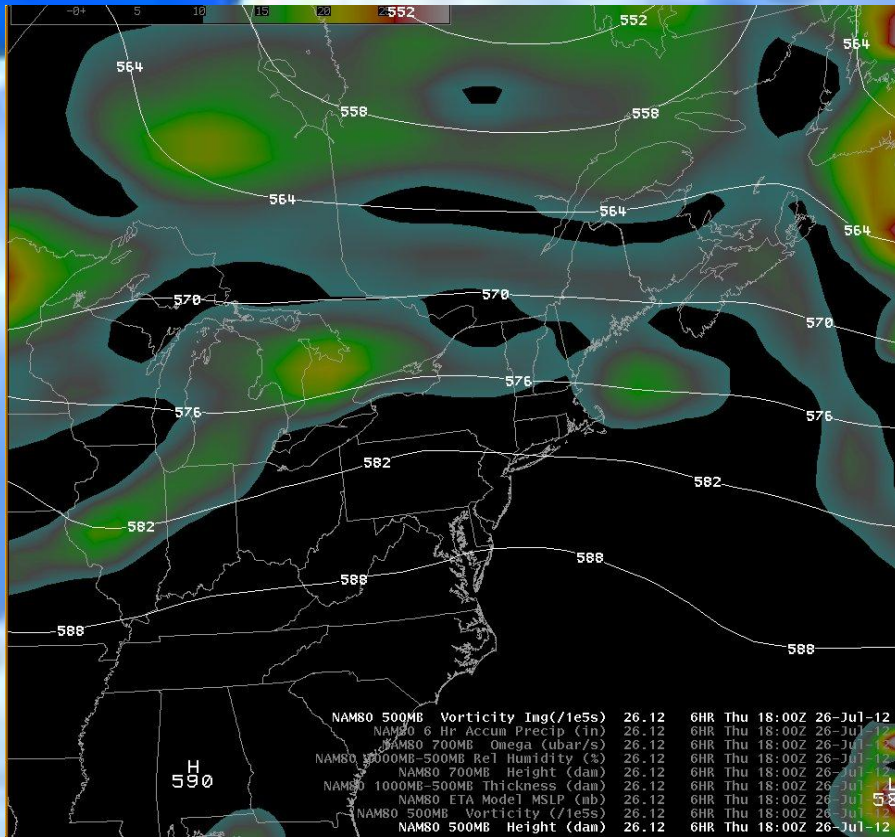
# 7 tornadoes during the afternoon 7/26



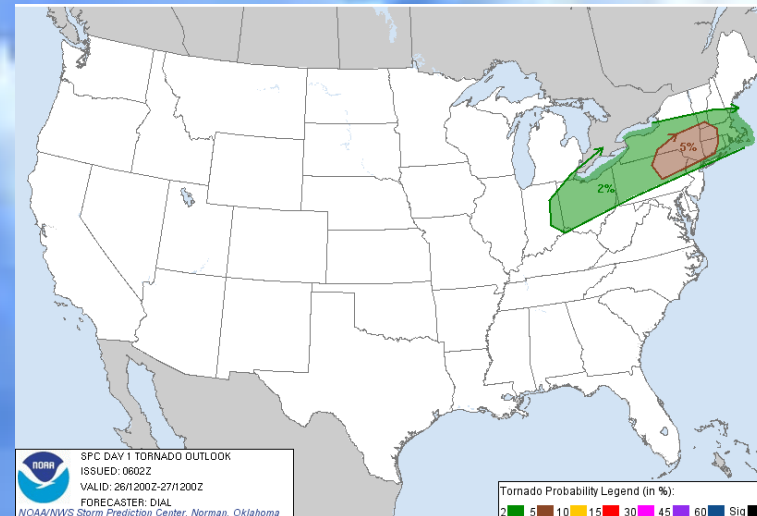
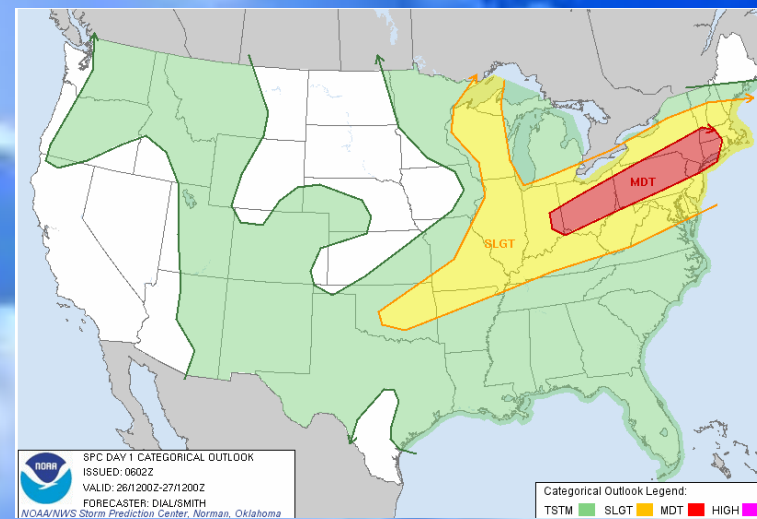
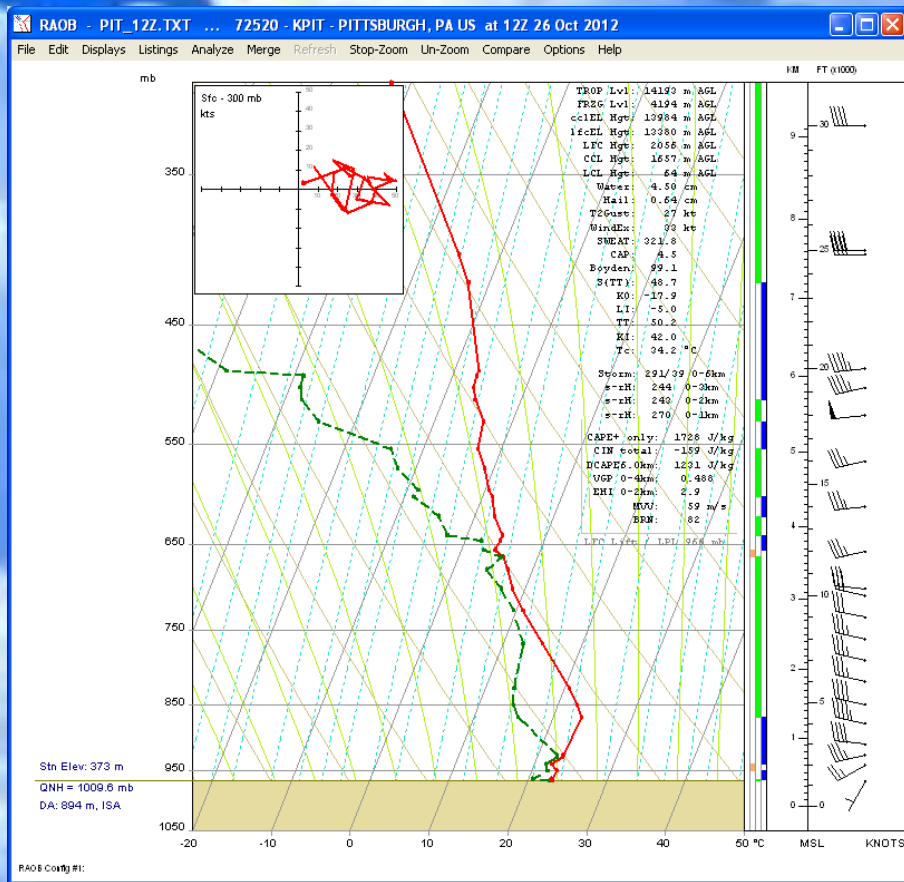
# A 9 mile long EF1 through downtown Elmira



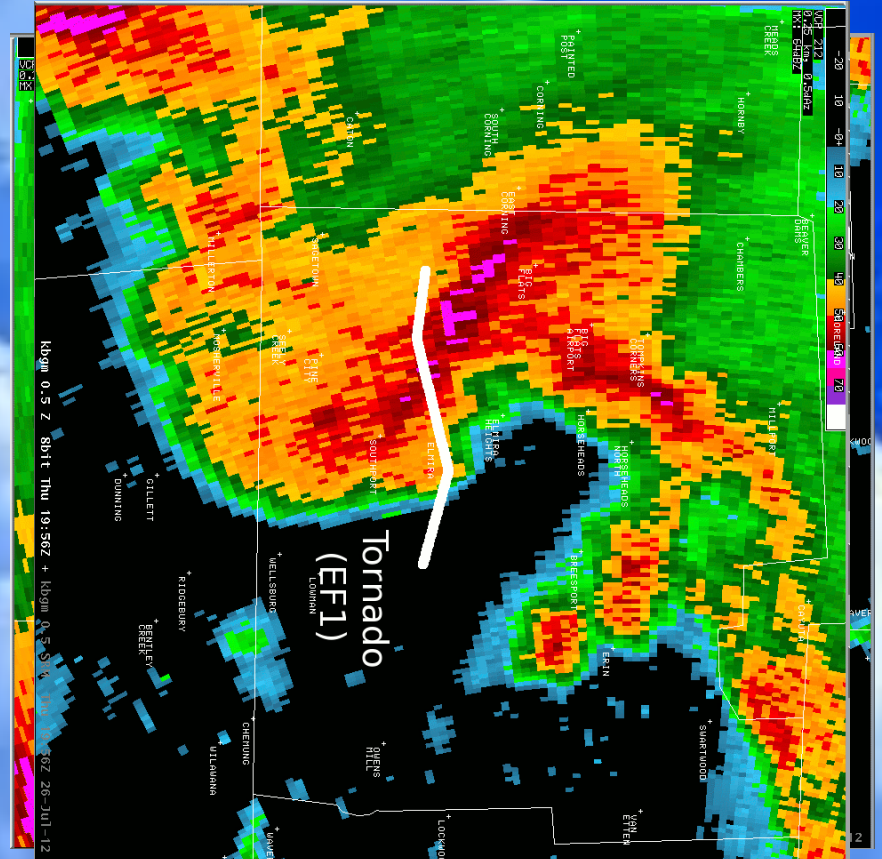
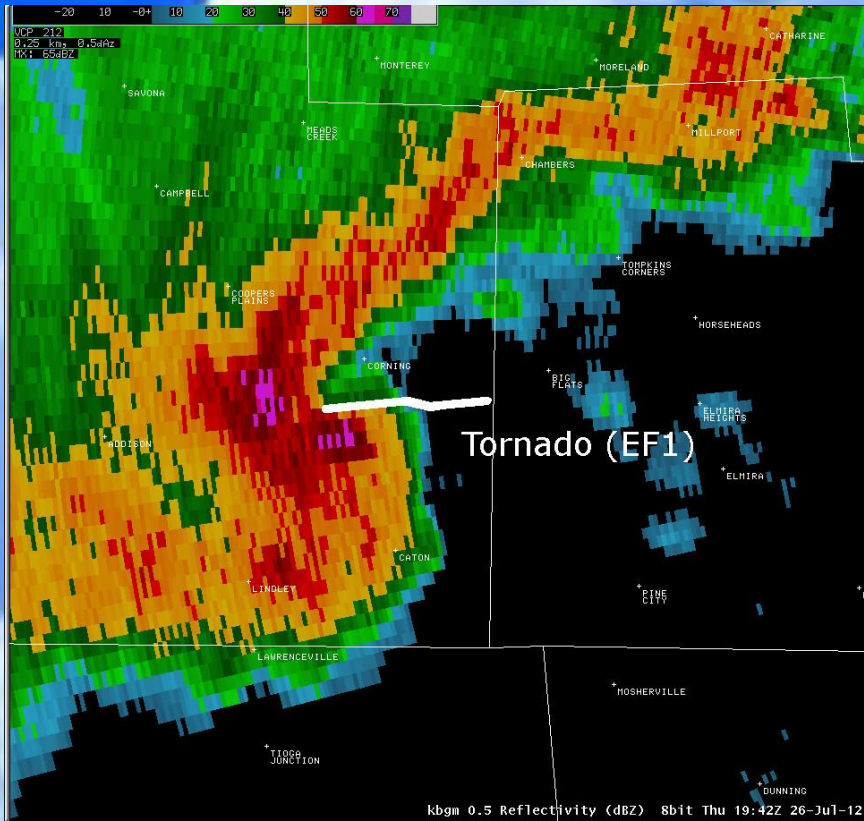
# 500 mb hts, vorticity, visible sat and obs



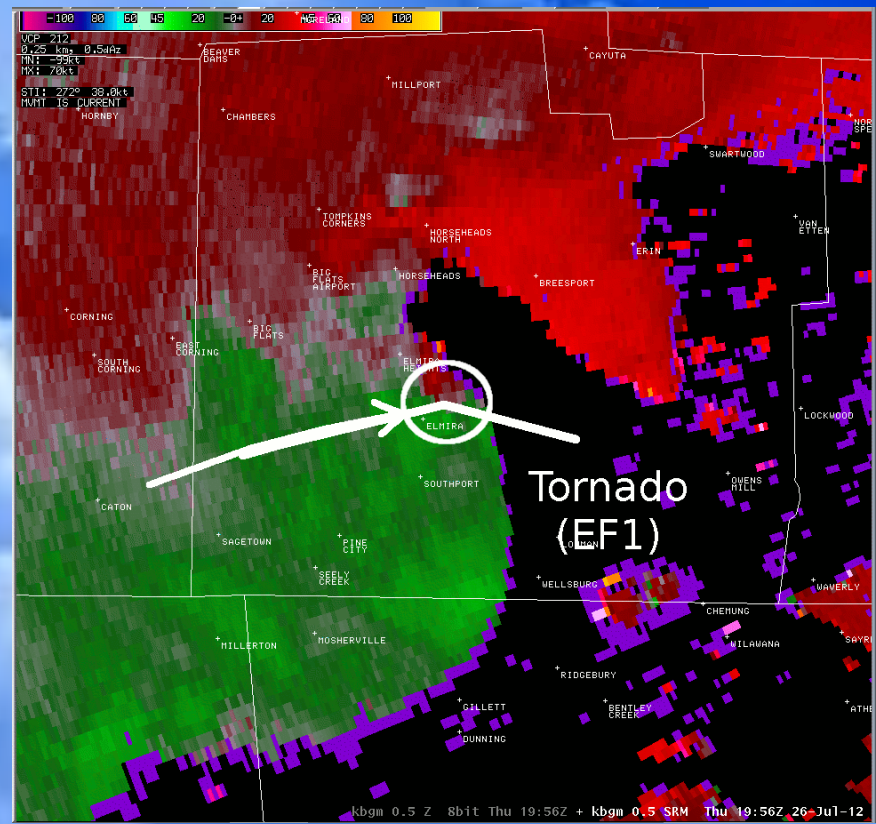
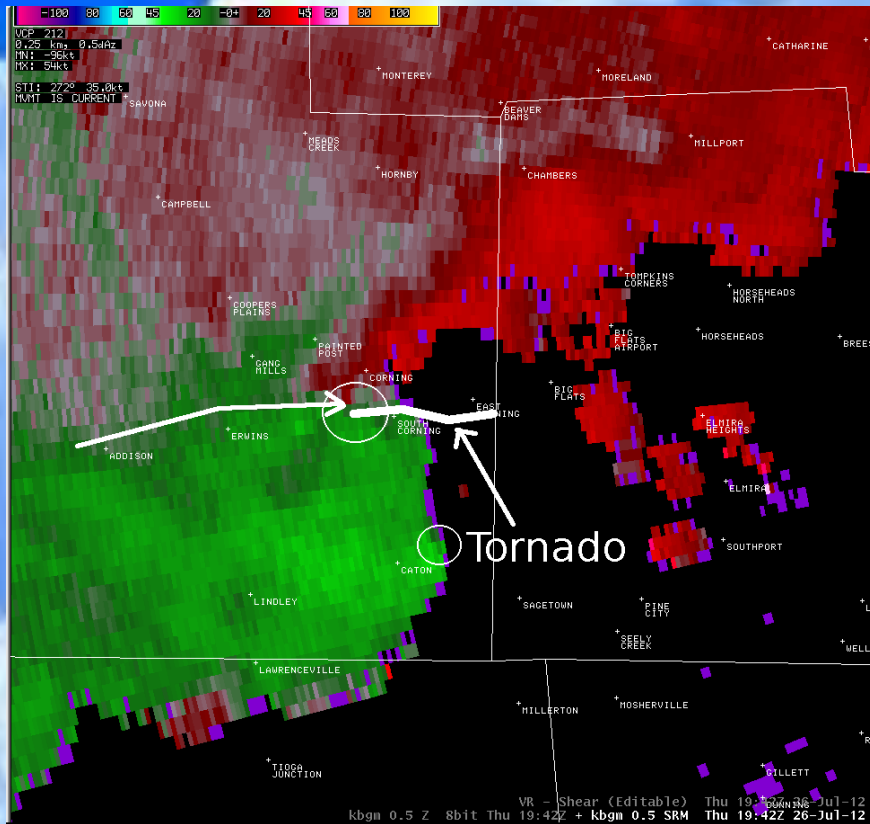
# PIT 12z sounding and SPC outlook



# 0.5 degree reflectivity

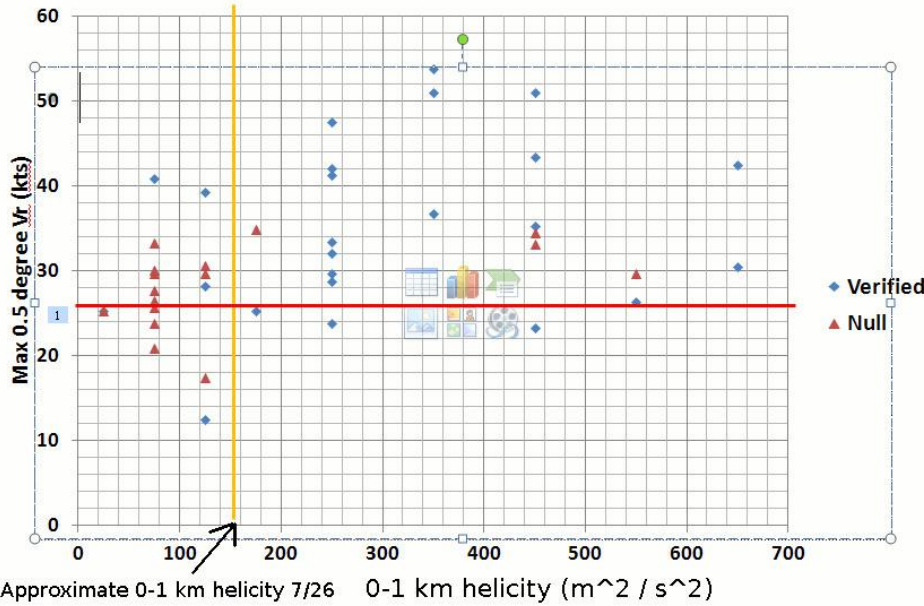


# 0.5 degree storm relative motion

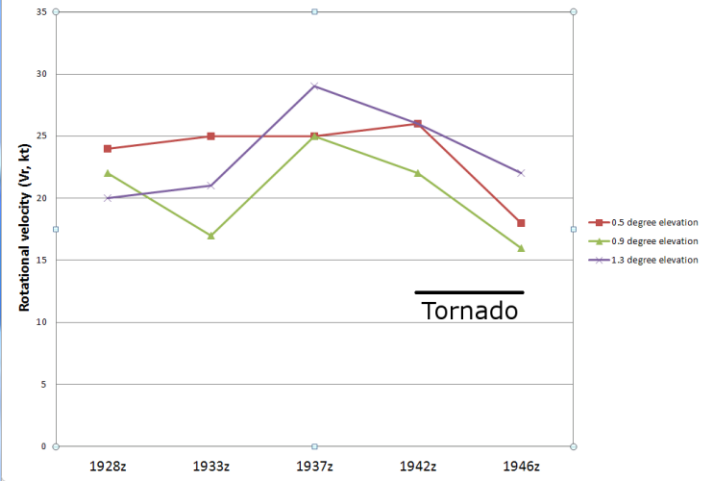


# Rotational velocity

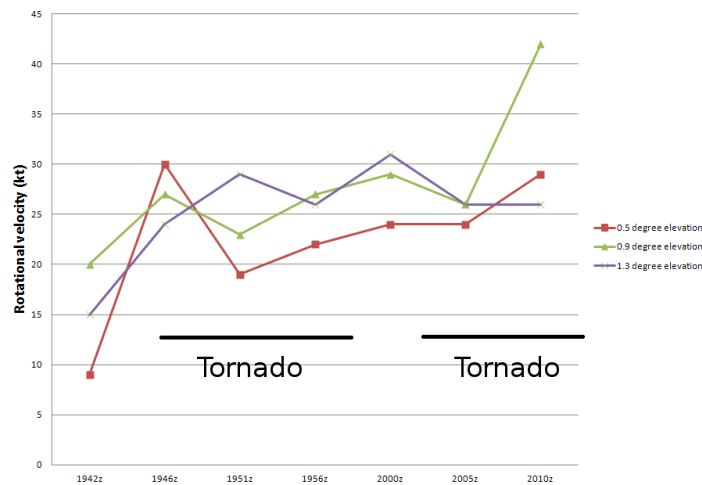
1.5 nm Supercell/QLCS Vr



Rotational velocity over 1.5 nm - 1st couplet

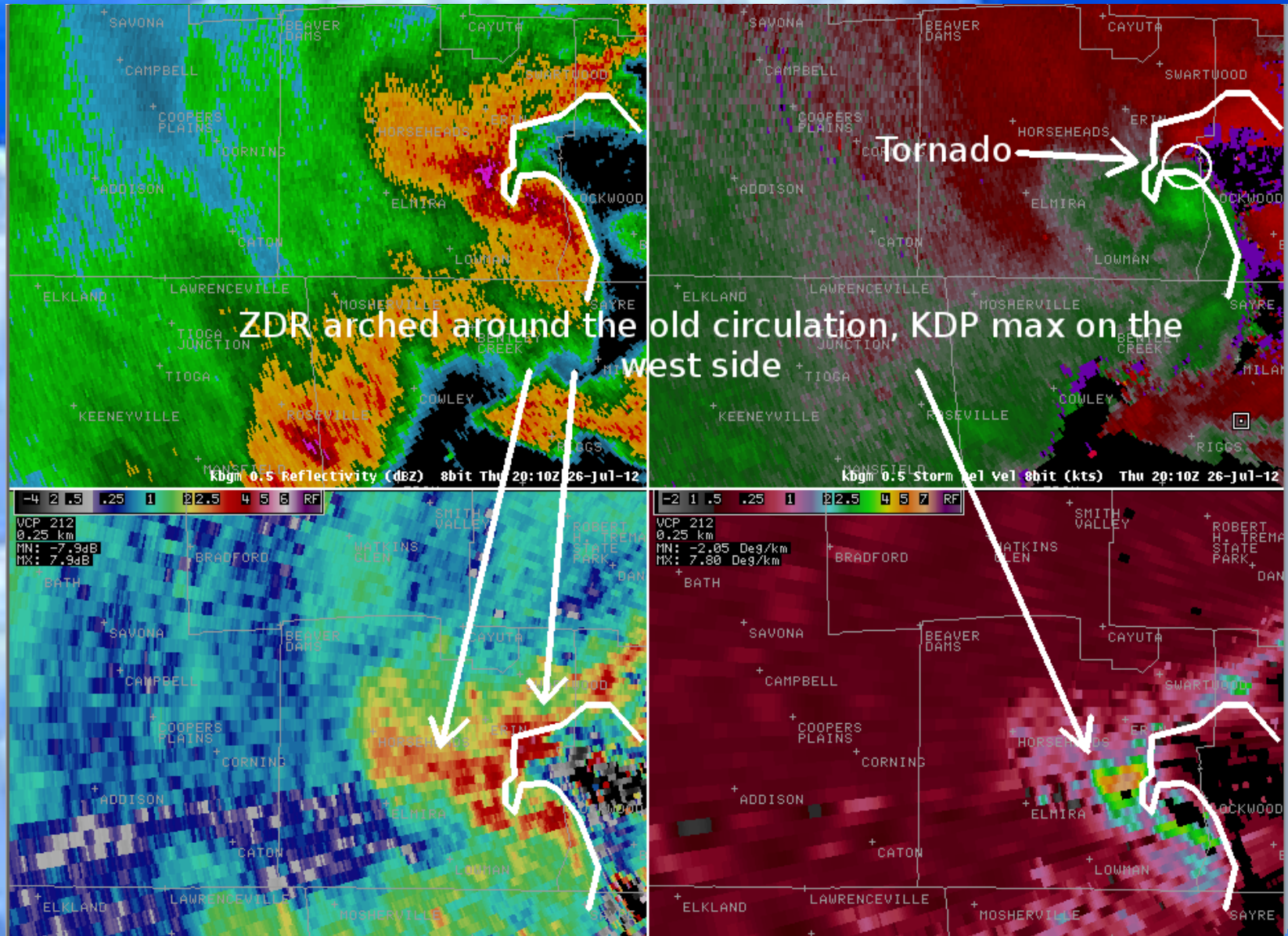


Rotational velocity over 1.5 nm - 2nd couplet





# Dual pol variables



Summary... a tornadic supercell over southern New York appeared to develop characteristics described in previous research...

- An arc of high ZDR developed from northeast to southwest around the primary circulation.
- A maxima of high KDP developed on the southwest side of circulation.