

COPY

**DECISION RECORD
OFFICIAL NOTICE AND ORDER**

Designation of all-terrain vehicle trails within or contiguous to designated Wildlife Management Areas as specified in *Minnesota Statutes, Section 97A.133, subd. 3.*

**DESIGNATION OF ALL-TERRAIN VEHICLE TRAILS
IN WILDLIFE MANAGEMENT AREAS
ON LANDS UNDER THE AUTHORITY OF THE COMMISSIONER
IN AITKIN, BELTRAMI AND MARSHALL COUNTIES, MINNESOTA**

**NOTICE PUBLISHED: JANUARY 3, 2006
EFFECTIVE DATE: DECEMBER 31, 2006**

NOTICE IS HEREBY GIVEN that the Commissioner of the Minnesota Department of Natural Resources orders the designation of all-terrain vehicle trails as identified in the “*Phase II Plan*”, attached hereto and incorporated herein, for state lands under the authority of the commissioner located in Aitkin, Beltrami and Marshall Counties of Minnesota. Trail designations are made pursuant to *Minnesota Statutes, Section 97A.133, subd. 3*. This order supercedes and replaces the *Phase I Plan* and order (*Cite 29 SR 323*).

WHEREAS:

1. *Minnesota Statutes, Section 97A.133, Subd. 3* directs the commissioner of natural resources to identify, designate and sign all-terrain vehicle trails in order to connect trails, forest roads and public highways to provide reasonable travel for all-terrain vehicles in areas of historic all-terrain vehicle use, including trails that are within or contiguous to designated Wildlife Management Areas located on lands acquired by the state pursuant to *Minnesota Statutes, Chapter 84A*.
2. The commissioner consulted with wildlife management area users, including both motorized and non-motorized trail users, in identifying and evaluating trails for designation in accordance with procedures specified by *MN Laws 2002, Chapt. 353, Sect. 8*.
3. The agency solicited and received written comments and submissions on the proposed trail designations and incorporated these as appropriate into the *Phase II Plan*.
4. All notice and procedural requirements in Minnesota Statutes, and other applicable rules and law have been complied with.
5. The all-terrain vehicle trail designations are both needed and reasonable.

NOW THEREFORE, IT IS ORDERED that the all-terrain vehicle trail segments, contained in the attached *Phase II Plan*, as noticed in the State Register and filed with the Secretary of State, are hereby designated pursuant to authority vested in me by Minnesota Law.

IT IS FURTHER ORDERED that the designation of said all-terrain vehicle trail segments shall become effective on December 31, 2006. This order supercedes and replaces the *Phase I Plan* and order. (*Cite 29 SR 323*)

Gene Merriam, Commissioner
Department of Natural Resources

12/12/05

Attached: *Phase II ATV Trail Plan for Aitkin, Beltrami & Marshall Counties.*

Signed copy on file w/MN Secretary of State – Refer to No. 0601345

CCOrder2.Doc

PHASE II PLAN / ATV TRAILS

AITKIN COUNTY

Soo Line Railroad Right of Way. Begins on the old rail grade and proceeds 0.5 mile in the SW1/4 Section 22, T47N, R 26W.

BELTRAMI COUNTY

Big Grass #1. Begins at the southwest corner of Section 7, T158N, R38W, proceeds east 2.5 miles, then proceeds north 0.5 miles, then northwest 0.75 miles, then north 0.5 miles for a total of 4.25 miles.

Big Grass #1a. Begins at the SW corner of the Section 10, T158N, R38W then proceeds east 0.5 miles.

Big Grass/Northwood #5. Begins at the northwest corner of Section 31, T158N, R38W then proceeds south 1.5 miles.

Big Grass #3. Begins at the southeast corner of Section 36, T158N, R38W then proceeds north for a distance of 1.0 mile.

Big Grass #4. Begins at the northeast corner of Section 35, T158N, R38W. It proceeds south 1.25 miles.

Northwood #1. Begins at the southeast corner of Section 12, T157N, R38W, proceeds north 1.4 miles.

Northwood #2. Begins at the southeast corner of Section 8, T157N, R38W, then proceeds west 1.75 miles. There will be a seasonal closure in effect from March 15th to July 15th annually along this segment due to nesting birds.

Northwood #3. Begins at the southeast corner of Section 8, T157N, R38W, proceeds north 1.0 mile.

Northwood #6. Begins at the northwest corner of the NE 1/4 Section 20, T157N, R38W. It proceeds east for 0.5 miles, it then turns south for a distance of 0.5 miles for a total distance of 1.0 miles.

Northwood-Benville #5. Begins at the NW corner of Section 4, T156N, R38W and proceeds east 2.2 miles.

Benville #1a. Begins at the southeast corner of NENE1/4 Section 9, T156N, R38W and proceeds north 0.25 mile, then west 0.5 mile for a total length of 0.75 miles.

Benville #1b. Begins at the southwest corner of Section 4, T156N, R38W and proceeds north 1.0 mile.

Spruce Grove #1. Begins at the southeast corner of NE1/4 Section 30, T156N, R37W and then proceeds north 2.25 miles.

Spruce Grove #2. Begins at the southeast corner of the NE1/4 Section 30, T156N, R37W. The trail proceeds west for a distance of 1.0 mile.

Hamre-Lee #5. Begins at the northeast corner of Section 20, T155N, R37W and proceeds west 4.0 miles.

Hamre #1. Begins at the northeast corner of Section 10, T155N, R37W and proceeds south 0.5 mile.

Hamre #2. Begins at the northwest corner of Section 11, T155N, R37W and proceeds east 1.0 mile.

Hamre #3. Begins at the northwest corner of Section 16, T155N, R37W and then proceeds east 3.5 miles.

Hamre #4. Begins at the northeast corner of Section 17, T155N, R37W and then proceeds south 1.75 miles.

Hamre #6a. Begins at the southeast corner of Section 18, T155N, R37W and then proceeds north 0.5 mile.

Hamre #6b. Begins at the southeast corner of NENE1/4 Section 18, T155N, R37W and then proceeds north 0.5 mile.

Hamre #7. Begins at the SE corner of NE SE1/4 Section 22, T155N, R37W and proceeds north 0.25 mile.

Hamre #9. Begins at the southeast corner of Section 26, T155N, R37W and then proceeds north 0.25 miles.

Hamre #10. Begins at the northwest corner of Section 33, T155N, R37W and proceeds west 0.1 mile, then south 0.5 miles, then east 1.0 mile for a total of 1.6 miles.

Hamre #11. Begins at the northeast corner of Section 33, T155N, R37W and then proceeds south 0.5 mile.

Hamre #12. Begins at the northeast corner of the NWNE1/4 Section 3, T155N, R37W. The trail proceeds west 0.75 mile, then south 1.0 mile for a total distance of 1.75 miles.

Hamre #13. Begins at the NE corner of the NW1/4 Section 9, T155N, R37W. It proceeds west 1.0 mile.

Hamre #13a. Begins at the southeast corner of the NESE1/4 Section 8, T155N, R37W, then proceeds north for 0.25 miles on grade. The segment then moves to the east side of Homme Road and continues north for 0.50 miles to its terminus at the northwest corner of Section 9, T155N, R37W for a total distance of 0.75 miles.

Hamre #14. Begins at the northwest corner of Section 32, T155N, R37W. It proceeds east 0.9 mile.

Hamre #15. Begins at the northeast corner of Section 10, T155N, R37W. It proceeds west 0.5 miles.

Hamre #16. Begins at the NE corner of the SE1/4 Section 22, T155N, R37W. It proceeds west 1.0 mile.

Hamre #17. Begins at the southwest corner of Section 22, T 155N, R37W. It proceeds north for a distance of 0.5 miles.

Hamre # 18. Begins at the northeast corner of the SE1/4 of Section 21 T155N, R37W. It proceeds west for a distance of 1.0 mile.

Lee #1. Begins at the southeast corner of the NE1/4 of Section 33, T155N, R38W, then proceeds north, then northwesterly 1.6 miles.

Lee #2a. Begins at the northwest corner of Section 26, T155N, R38W and then proceeds east 2.0 miles.

Lee #2b. Begins at the NW corner of NENW1/4 Section 28, T155N, R38W, then proceeds east 1.25 miles.

Lee #2c. Begins at the southeast corner of Section 21, T155N, R38W and proceeds north 1.5 miles.

Lee #3. Begins at the southeast corner of Section 7, T155N, R38W, then proceeds west 0.75 miles.

Lee #4. Begins at the southeast corner of Section 6, T155N, R38W, then proceeds west 0.5 mile.

Lee #5. Begins at the southeast corner of Section 22, T155N, R38W then proceeds north 3.0 miles.

Lee #6. Begins at the southeast corner of Section 14, T155N, R 38W and proceeds north 1.75 miles.

Lee #7. Begins at the NW corner of Section 11, T155N, R38W and proceeds east for a distance of 0.75 mile.

Lee #8. Begins at the SE corner of Section 6, T155N, R38W and proceeds north for a distance of 0.5 mile.

Lee #9. Begins at the northwest corner of NENE1/4 Section 26, T155N, R38W and proceeds south 1.0 mile.

Lee #10. Begins at the northeast corner of NENE1/4 Section 29, T155N, R38W and proceeds west 1.5 miles.

Lee #11. Begins at the NW corner of Section 26, T155N, R38W and proceeds south for a distance of 1.0 mile.

MARSHALL COUNTY

East Park #1. Begins at the intersection of Marshall County Road 118 and the south section line of section 36, T158N, R44W. It proceeds west 170 feet to the southwest corner of section 36, T158N, R44W. It then proceeds north to the NW corner of the SW1/4 section 36, T158N, R44W for a total distance of 0.5 miles.

East Park #2. Begins along the old road alignment for Marshall County 118 in the south ½ of section 36, T158N, R44W. The old road was removed when the new road was straightened along this reach leaving the old road tread way as a corridor of disturbance suitable for an ATV trail. The total distance is 0.5 miles.

Huntly #6. Begins southwest corner of Section 27, T158N, R43W, proceeds east 0.75 miles.

Huntly #7. Begins at the southwest corner of Section 27, T158N, R43W, proceeds north 0.75 miles.

Huntly #8 Begins at southwest corner of Section 9-T158N, R43W, proceeds north 0.25 mile.

Como #2. Begins at the crossing of Marshall County Road 48 on the Section line between 15/14, T158N, R42W, then proceeds south 0.25 miles.

Como #5a. Begins at the southwest corner of the NW1/4 Section 17, T158N, R42W and proceeds north 0.5 mile.

Como #5b. Begins at the southwest corner of the NW1/4, Section 17, T158N, R42W and proceeds east

0.5 mile.

Como #8. Begins southwest corner of 32, T158N, R42W, then proceeds 0.25 mile north.

Linsell #3a. Begins southwest corner of NW1/4, Section 15, T158N, R39W. It proceeds north 0.5 miles.

Linsell #4. Begins at the northwest corner of Section 22, T158N, R39W, then proceeds east 0.5 mile.

Linsell #7. Begins at the SE corner of NENE1/4 Section 10, T158N, R39W, then proceeds north 0.5 miles.

Linsell #8. Begins at the northwest corner of Section 15, T158N, R39W. It proceeds east 0.5 mile.

Linsell #9. Begins at the northeast corner Section 12, T158N, R39W. It proceeds south 0.5 mile.

Linsell #10. Begins on southeast corner of Section 24, T158N, R39W. It proceeds north 1.5 miles.

Moylan/Eckvol #2. Begins at the southwest corner of Section 34, T156N, R40W, then proceeds east 1.0 mile.

Moylan/Eckvol #3. Begins at the SW corner of Section 36, T156N, R40W, then proceeds east 0.5 miles.

Espelie #1. Begins at the southeast corner of Section 6, T155N, R39W, then proceeds north 0.25 miles.

Espelie-Valley #2. Begins at the southeast corner of the NENE1/4 Section 6, T155N, R39W, then proceeds north 0.5 mile.

Espelie/Valley #2a. Begins at the southwest corner of Section 5, T155N, R39W and proceeds east 0.5 miles, then north 0.5 mile, then east 0.5 mile, then north 0.25 mile, then west 0.5 mile, then north 0.25 mile, then west 0.25 mile, then north 0.5 mile and then west 0.25 mile to its terminus at the northwest corner of the SW1/4 Section 32, T156N, R39W for a distance of 3.5 miles.

Espelie #3. Begins at the southeast corner of Section 26, T155N, R39W, and proceeds west 0.75 miles.

Espelie #4. Begins at the northeast corner of Section 34, T155N, R39W, then proceeds west 1.5 miles.

Espelie #7. Begins at the southwest corner of Section 11, T155N, R39W, then proceeds north 1.0 mile.

Espelie #8. Begins at the southwest corner of Section 11, T155N, R39W, then proceeds east 0.25 miles.

Espelie #11. Begins at the northeast corner of Section 25, T155N, R39W and proceeds west 0.5 mile.

Espelie #12. Begins at the northeast corner Section 8, T155N, R39W and proceeds west 0.5 mile.

Espelie #13. Begins at the northeast corner Section 18, T155N, R39W and proceeds west 0.75 mile.

Espelie #14. Begins at the southeast corner Section 8, T155N, R39W and proceeds west 1.0 mile.

Espelie #15. Begins at the southeast corner of the NENE1/4 Section 7, T155N, R39W and proceeds north 0.25 mile, then west 0.75 mile for a total distance of 1.0 mile

Espelie #16. Begins at the southwest corner of Section 7, T155N, R39W and proceeds north 0.5 mile, then

crosses to the southeast corner NE1/4 Section 12 and proceeds north 0.5 mile, then west 0.25 mile for a total distance of 1.25 miles.

Espelle #17. Begins at the northwest corner of the NE1/4 Section 25, T155N, R39W and proceeds south 1.0 mile; then west 0.5 mile, then north 0.5 mile, then east 0.5 mile for a total distance of 2.5 miles.

Moylan #1a. Begins at the NW corner of the NE1/4 Section 9, T155N, R40W then proceeds east 0.75 mile.

Moylan #1b. Begins at the NW corner of NE1/4, Section 9, T155N, R40W. It proceeds south 0.25 miles.

Moylan #1c. Begins at the northeast corner of the NWNW1/4, Section 10, T155N, R40W, it proceeds south for a distance of 0.35 miles.

COPY

**DECISION RECORD
OFFICIAL NOTICE AND ORDER**

Designation of all-terrain vehicle trails within or contiguous to designated Wildlife Management Areas as specified in *Minnesota Statutes, Section 97A.133, subd. 3.*

**UNDESIGNATION OF ALL-TERRAIN VEHICLE TRAILS
IN WILDLIFE MANAGEMENT AREAS
ON LANDS UNDER THE AUTHORITY OF THE COMMISSIONER
IN BELTRAMI AND MARSHALL COUNTIES, MINNESOTA**

**NOTICE PUBLISHED: JANUARY 3, 2006
EFFECTIVE DATE: FEBRUARY 1, 2006**

NOTICE IS HEREBY GIVEN that the Commissioner of the Minnesota Department of Natural Resources orders the undesignation of all-terrain vehicle trails as identified in the “*Phase I Plan, ATV Trail Undesignations*”, attached hereto and incorporated herein, for state lands under the authority of the commissioner located in Beltrami and Marshall Counties of Minnesota. Trail designations are made pursuant to *Minnesota Statutes, Section 97A.133, subd. 3.* This order supercedes and replaces the *Phase I Plan* and order (*Cite 29 SR 323*).

WHEREAS:

1. *Minnesota Statutes, Section 97A.133, subd. 3* directs the commissioner of natural resources to identify, designate and sign all-terrain vehicle trails in order to connect trails, forest roads and public highways to provide reasonable travel for all-terrain vehicles in areas of historic all-terrain vehicle use, including trails that are within or contiguous to designated Wildlife Management Areas located on lands acquired by the state pursuant to *Minnesota Statutes, Chapter 84A*.
2. The commissioner consulted with wildlife management area users, including both motorized and non-motorized trail users, in identifying and evaluating trails for designation or undesignation in accordance with procedures specified by *MN Laws 2002, Chapt. 353, Sect. 8*.
3. The agency solicited and received written comments and submissions on the proposed trail (un)designations and incorporated this information as appropriate into the *Phase I and Phase II Plans*.

4. All notice and procedural requirements in Minnesota Statutes, and other applicable rules and law have been complied with.
5. The all-terrain vehicle trail undesignations are both needed and reasonable.

NOW THEREFORE, IT IS ORDERED that the all-terrain vehicle trail segments, contained in the attached *Phase I Plan - ATV Trail Undesignations*, as noticed in the State Register and filed with the Secretary of State, are hereby undesignated pursuant to authority vested in me by Minnesota Law.

IT IS FURTHER ORDERED that the designation of said all-terrain vehicle trail segments shall become effective on February 1, 2006. This order supercedes and replaces the *Phase I Plan* and order (*Cite 29 SR 323*).

Gene Merriam, Commissioner
Department of Natural Resources

12/12/05

Attached: *Phase I ATV Trail Undesignations in Beltrami & Marshall Counties.*

Signed copy on file w/MN Secretary of State – Refer to No. 0601346

CCOrd2a.Doc

PHASE I PLAN ATV TRAIL UNDESIGNATIONS

BELTRAMI COUNTY

Benville #1, east/west. Begins at the southeast corner of SW ¼ Section 4, T156N, R38W then proceeds west 0.5 miles.

Benville #1, north/south. Begins at the southwest corner of the NW ¼ Section 10, T156N, R38W and proceeds north 0.25 miles.

Hamre #1. Begins at the southwest corner of Section 11, T155N, R37W and then proceeds north 0.5 miles.

Hamre #3. Begins at the northeast corner of Section 13, T155N, R37W and then proceeds west 0.5 miles.

Hamre #6. Begins at the northeast corner of SE ¼ Section 18, T155N, R37W and then proceeds north 0.25 miles.

Hamre #11. Begins at the southeast corner of Section 28, T155N, R37W and then proceeds north 0.5 miles.

Lee #3. Begins at the southwest corner of Section 8, T155N, R38W then proceeds east 0.5 miles.

Lee #4. Begins at the northwest corner of NE NW ¼ Section 7, T155N, R38W then proceeds east 0.25 miles.

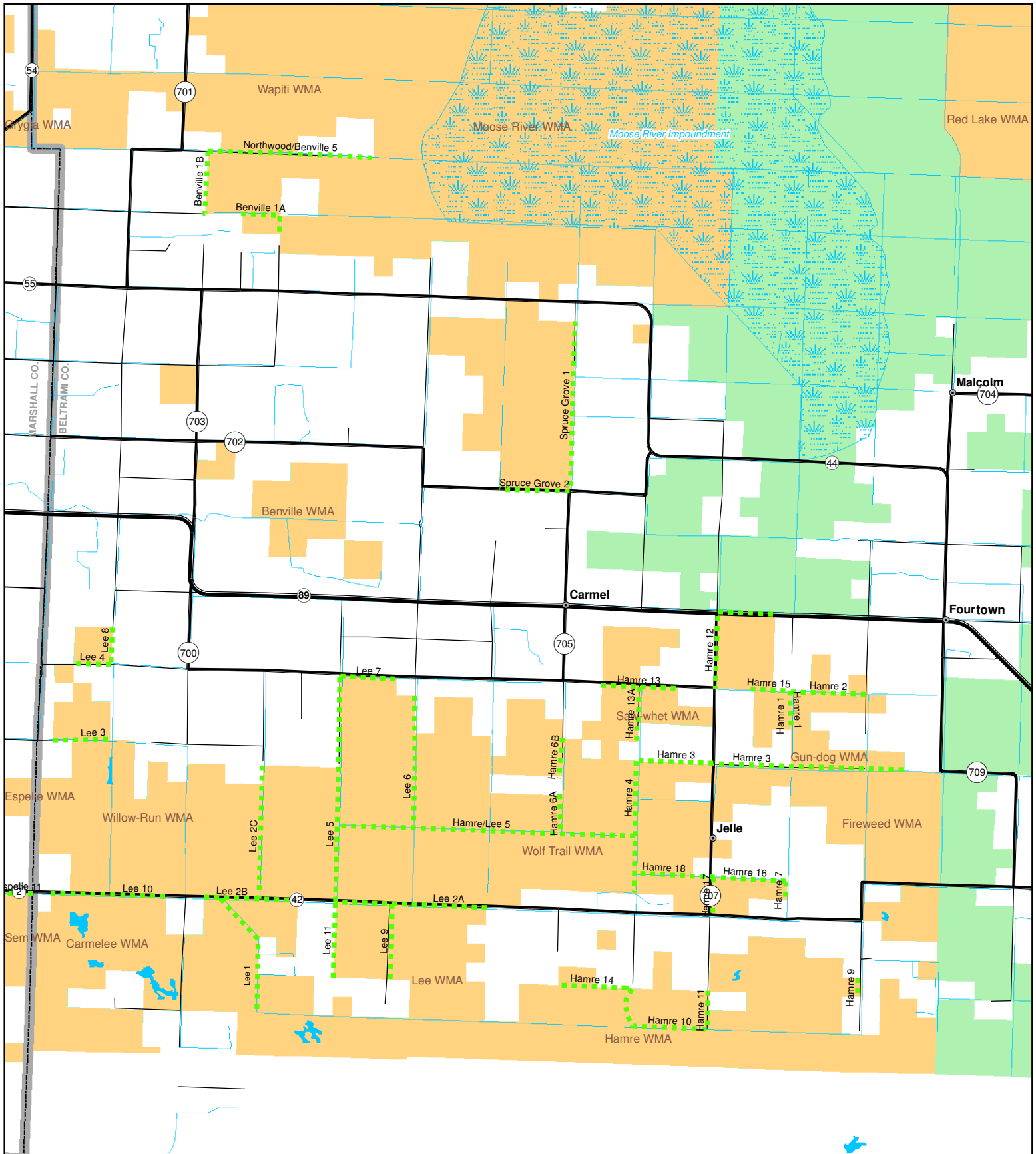
MARSHALL COUNTY

Como #7. Begins at the southwest corner of SE SW ¼ Section 31, T158N, R42W, then proceeds 0.75 mile east.

Moylan/Eckvol #2. Begins at the northwest corner of Section 2, T155N, R40W, then proceeds east 0.25 miles.

Espelie-Valley #2. Begins at the southeast corner of the NESE ¼ Section 31, T156N, R39W then proceeds north 0.25 mile.

Espelie #8. Begins at the southwest corner of SESW ¼ Section 11, T155N, R39W then proceeds east 0.25 miles.



Con Con ATV Trails: Beltrami County - Fourtown

TRAILS

Open to ATV use only

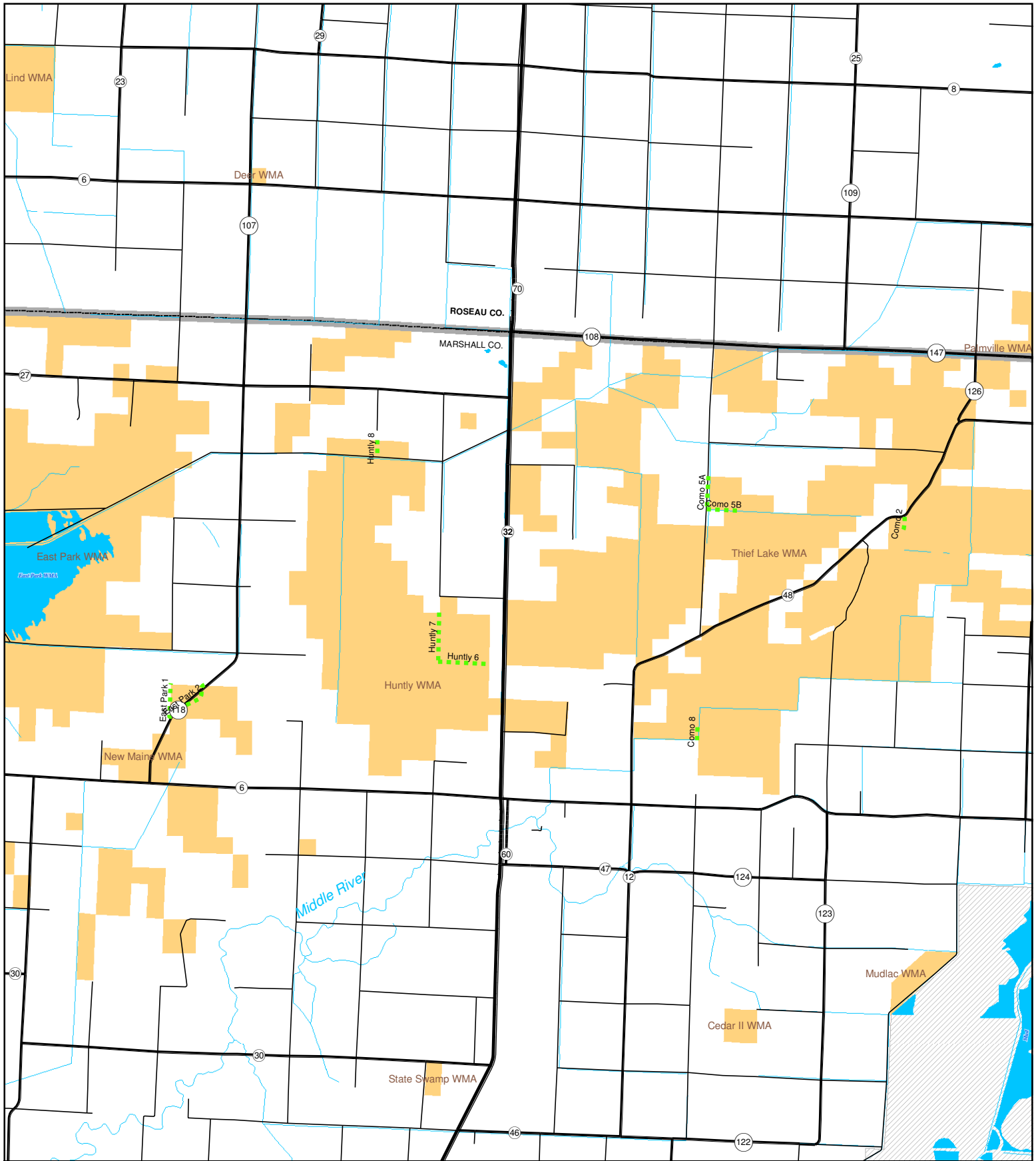
LAND OWNERSHIP

State Forestry lands
State Wildlife Management Areas



Scale in Miles





Con Con ATV Trails: East Valley/North Middle River

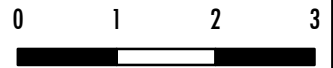
TRAILS

— Open to ATV use only

LAND OWNERSHIP

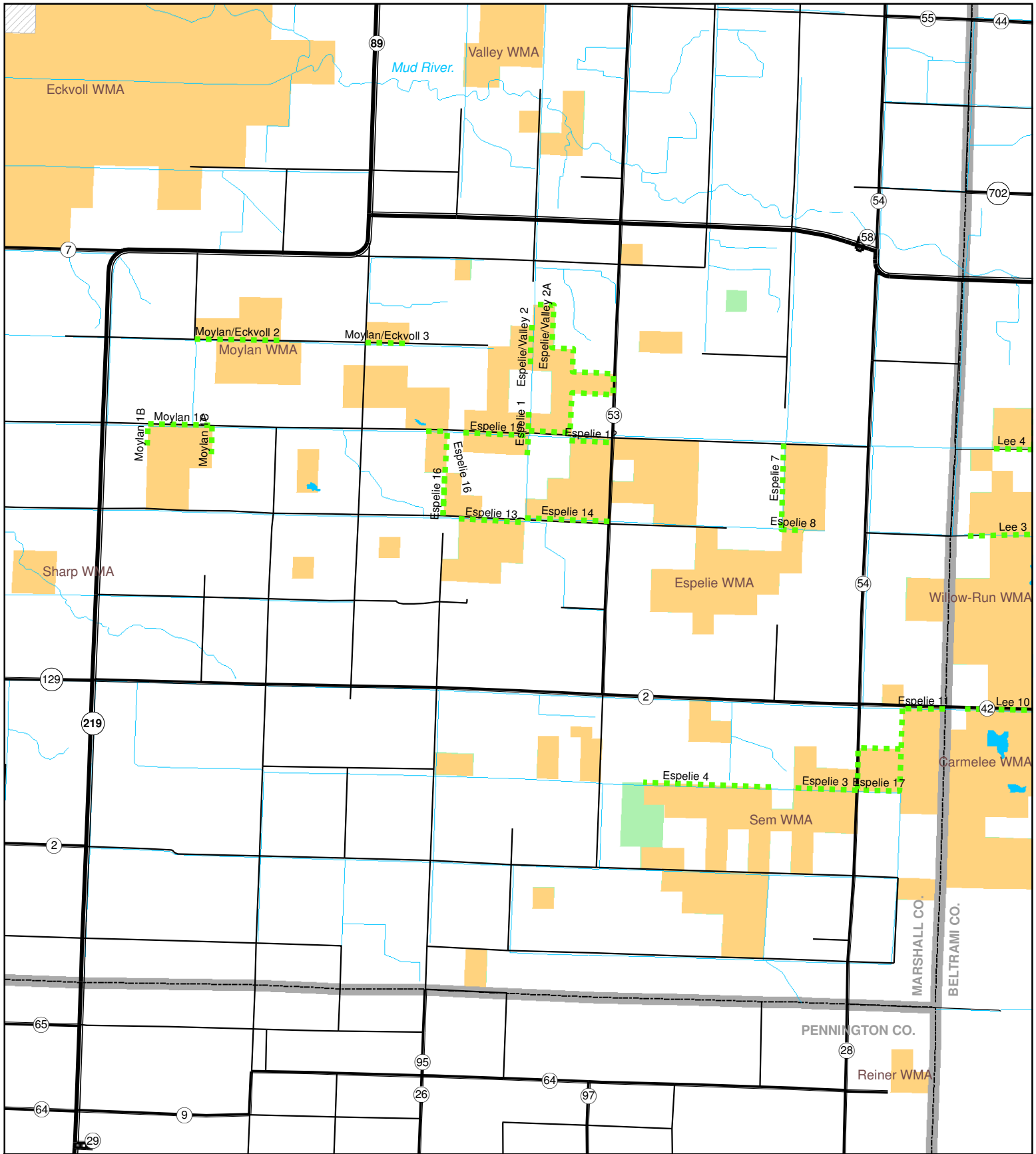
▨ Agassiz National Wildlife Refuge

■ State Wildlife Management Areas



Scale in Miles

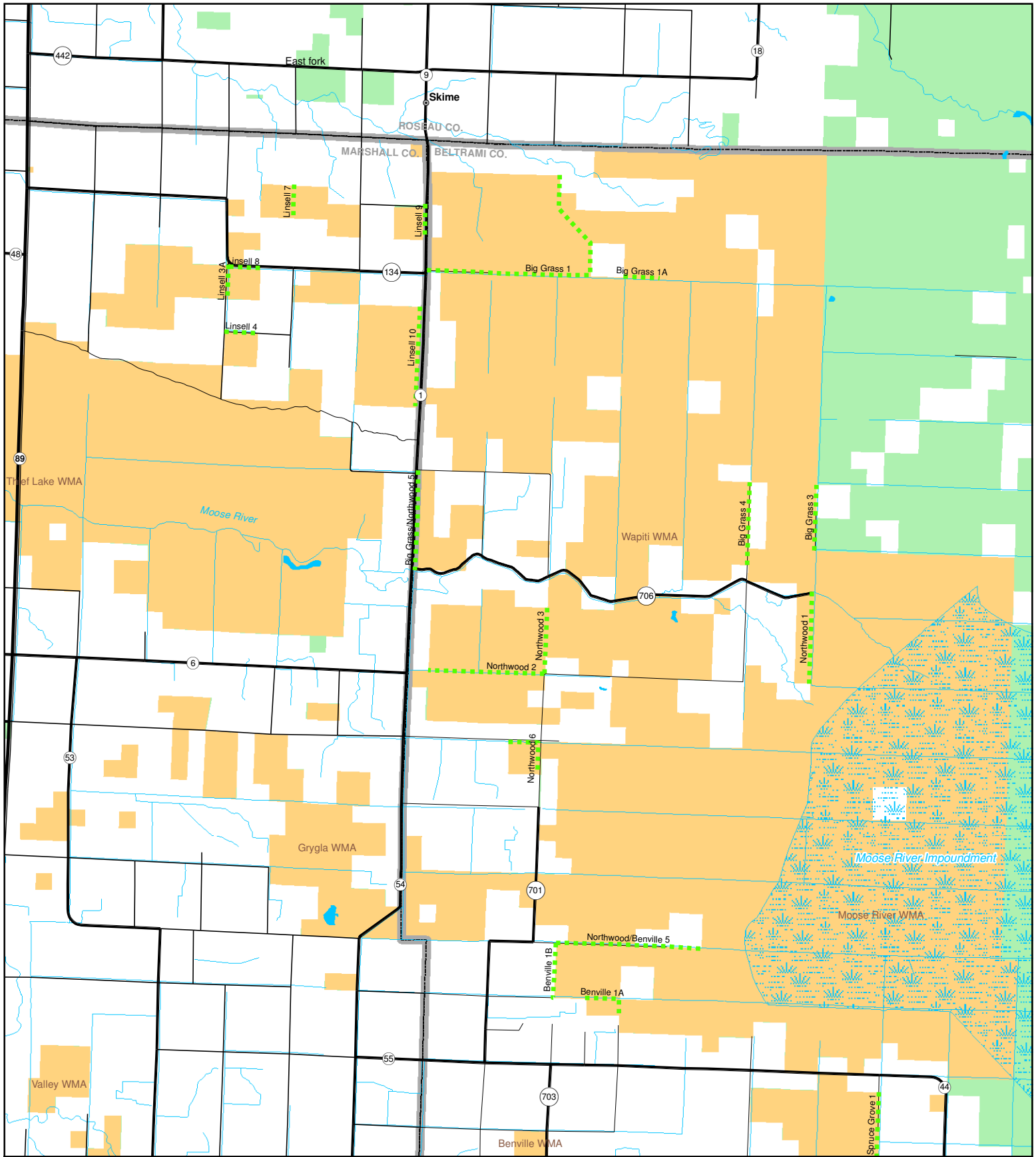




Con Con ATV Trails: SE Marshall County

- | | |
|----------------------|---------------------------------|
| TRAILS | LAND OWNERSHIP |
| Open to ATV use only | State Forestry lands |
| | State Wildlife Management Areas |





Con Con ATV Trails: Wapiti/Moose River

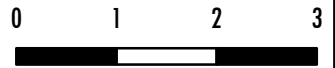
TRAILS

Open to ATV use only

LAND OWNERSHIP

State Forestry lands

State Wildlife Management Areas



Scale in Miles

